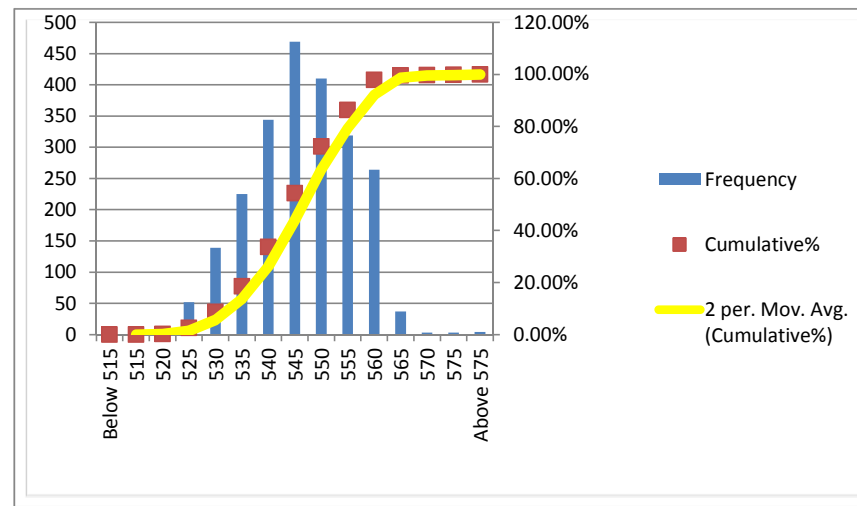


Campaign Length: 25.04.16 to 02.05.16
Total Production: 12494.468 MT
Billet Rolled: AMZ-223, OSW-209, RIN-242, JSC-226, KSC-225, SML-235, BSP-180
Product: Xtreme 500W (4x12 mm)

YIELD STRENGTH	
Mean	546.314
Median	545
Mode	545
Std. Dev.	9.621
Min	520
Max	585
Count	2276

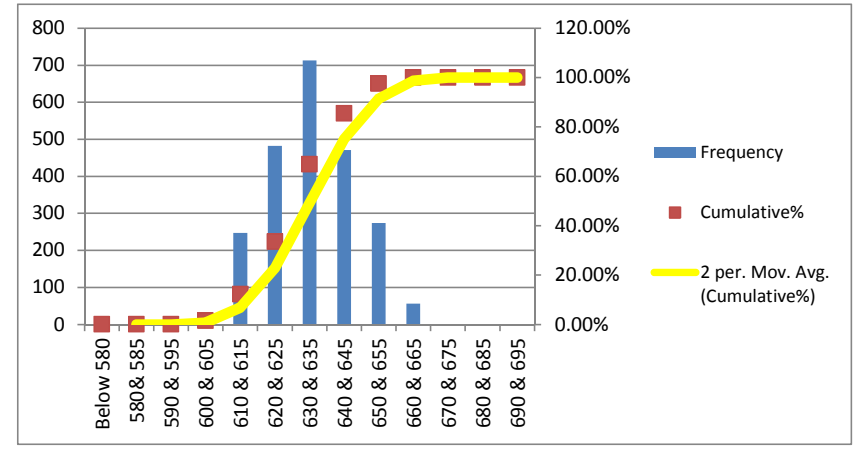
Bin	Frequency	%	Cumulative%
Below 515	0	0.00%	0.00%
515	0	0.00%	0.00%
520	7	0.31%	0.31%
525	52	2.28%	2.59%
530	139	6.11%	8.70%
535	225	9.89%	18.59%
540	344	15.11%	33.70%
545	469	20.61%	54.31%
550	410	18.01%	72.32%
555	319	14.02%	86.34%
560	264	11.60%	97.94%
565	37	1.63%	99.56%
570	3	0.13%	99.69%
575	3	0.13%	99.82%
Above 575	4	0.18%	100.00%
Total	2276		



MINIMUM REQUIREMENTS
As per ISO 6935-2: 500 Mpa
As per ASTM A-615: 420 Mpa

ULTIMATE STRENGTH	
Mean	633.071
Median	630
Mode	630
Std. Dev.	12.58
Min	600
Max	665
Count	2276

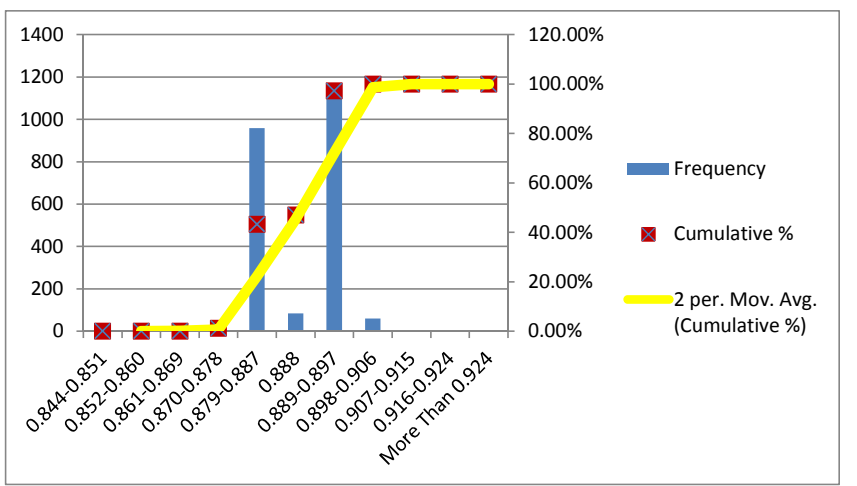
Bin	Frequency	%	Cumulative%
Below 580	0	0.00%	0.00%
580 & 585	0	0.00%	0.00%
590 & 595	0	0.00%	0.00%
600 & 605	33	1.45%	1.45%
610 & 615	247	10.85%	12.30%
620 & 625	482	21.19%	33.49%
630 & 635	713	31.33%	64.81%
640 & 645	471	20.69%	85.50%
650 & 655	274	12.04%	97.54%
660 & 665	56	2.46%	100.00%
670 & 675	0	0.00%	100.00%
680 & 685	0	0.00%	100.00%
690 & 695	0	0.00%	100.00%
700 & 705	0	0.00%	100.00%
710 & 715	0	0.00%	100.00%
Above 715	0	0.00%	100.00%
Total	2276		



MINIMUM REQUIREMENTS
As per ISO 6935-2: 575 Mpa
As per ASTM A-615: 620 Mpa

UNIT WEIGHT	
Mean	0.889
Median	0.889
Mode	0.889
Std. Dev.	0.005
Min	0.845
Max	0.910
Count	2276

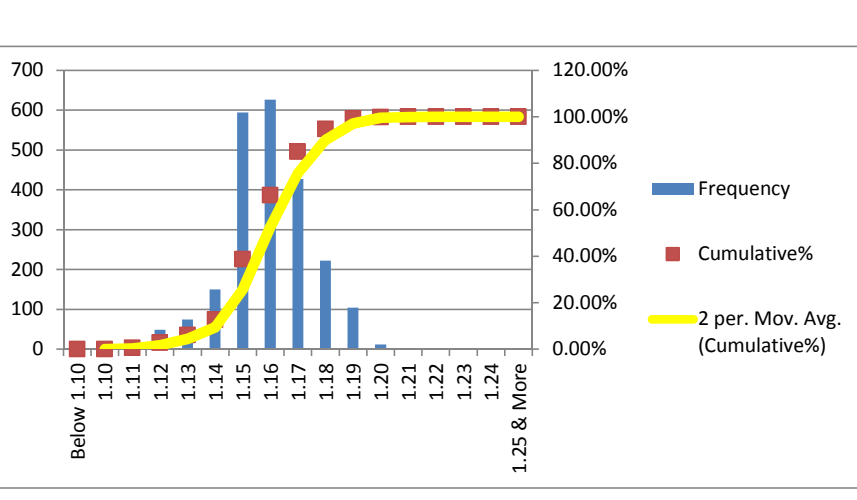
Bin	Frequency	%	Cumulative %
Less Than 0.844	0	0.00%	0.00%
0.844-0.851	1	0.04%	0.04%
0.852-0.860	1	0.04%	0.09%
0.861-0.869	1	0.04%	0.13%
0.870-0.878	26	1.14%	1.27%
0.879-0.887	958	42.09%	43.37%
0.888	84	3.69%	47.06%
0.889-0.897	1144	50.25%	97.32%
0.898-0.906	60	2.64%	99.96%
0.907-0.915	1	0.04%	100.00%
0.916-0.924	0	0.00%	100.00%
More Than 0.924	0	0.00%	100.00%
Total	2276		



MINIMUM REQUIREMENTS
As per ISO 6935-2: + 6%
As per ASTM A-615: -6%

T/Y RATIO	
Mean	1.159
Median	1.16
Mode	1.16
Std. Dev.	0.016
Min	1.10
Max	1.21
Count	2276

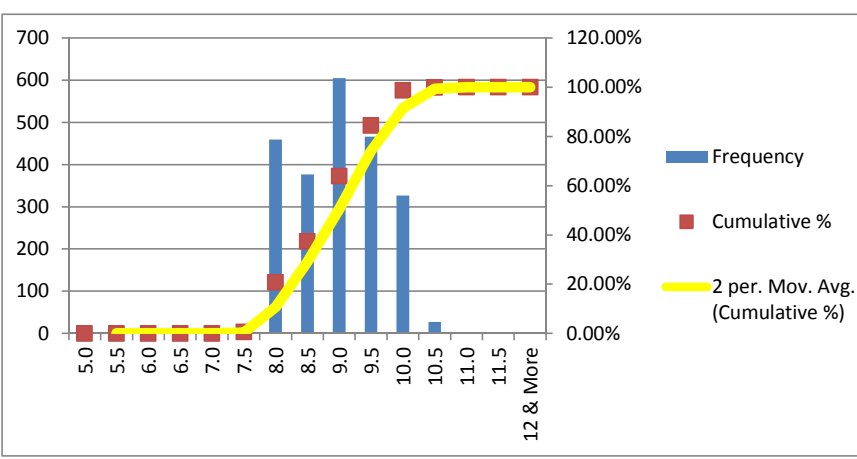
Bin	Frequency	%	Cumulative %
Below 1.10	0	0.00%	0.00%
1.10	1	0.04%	0.04%
1.11	13	0.57%	0.62%
1.12	49	2.15%	2.77%
1.13	75	3.30%	6.06%
1.14	150	6.59%	12.65%
1.15	594	26.10%	38.75%
1.16	626	27.50%	66.25%
1.17	427	18.76%	85.02%
1.18	222	9.75%	94.77%
1.19	104	4.57%	99.34%
1.20	12	0.53%	99.87%
1.21	3	0.13%	100.00%
1.22	0	0.00%	100.00%
1.23	0	0.00%	100.00%
1.24	0	0.00%	100.00%
1.25 & More	0	0.00%	100.00%
Total	2276		



MINIMUM REQUIREMENTS
As per ISO 6935-2: 17%: 1.15
As per ASTM A-615: Not Required

ELN. AT MAX. FORCE (Ag)(GL-200 mm)	
Mean	8.971
Median	9.0
Mode	9.0
Std. Dev.	0.693
Min	7.5
Max	11.0
Count	2276

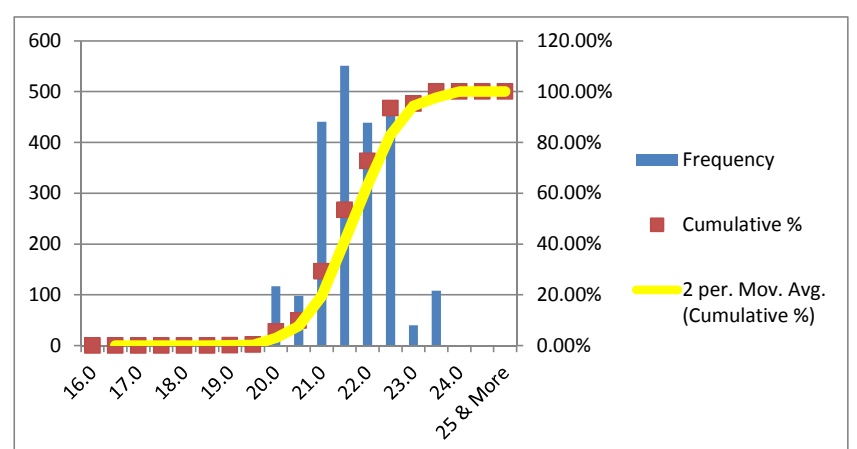
Bin	Frequency	%	Cumulative %
5.0	0	0.00%	0.00%
5.5	0	0.00%	0.00%
6.0	0	0.00%	0.00%
6.5	0	0.00%	0.00%
7.0	0	0.00%	0.00%
7.5	14	0.62%	0.62%
8.0	459	20.17%	20.78%
8.5	377	16.56%	37.35%
9.0	605	26.58%	63.93%
9.5	466	20.47%	84.40%
10.0	327	14.37%	98.77%
10.5	27	1.19%	99.96%
11.0	1	0.04%	100.00%
11.5	0	0.00%	100.00%
12 & More	0	0.00%	100.00%
Total	2276		



MINIMUM REQUIREMENTS
As per ISO 6935-2: 7%
As per ASTM A-615: Not Required

ELN. AFTER FRACTURE (A5)(GL-5D)	
Mean	21.700
Median	21.5
Mode	21.5
Std. Dev.	0.820
Min	18.5
Max	23.5
Count	2276

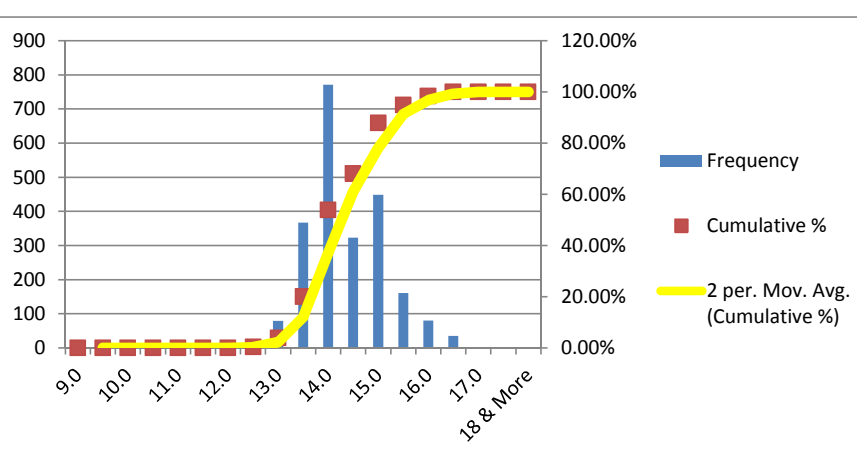
Bin	Frequency	%	Cumulative %
16.0	0	0.00%	0.00%
16.5	0	0.00%	0.00%
17.0	0	0.00%	0.00%
17.5	0	0.00%	0.00%
18.0	0	0.00%	0.00%
18.5	1	0.04%	0.04%
19.0	2	0.09%	0.13%
19.5	6	0.26%	0.40%
20.0	117	5.14%	5.54%
20.5	98	4.31%	9.84%
21.0	441	19.38%	29.22%
21.5	551	24.21%	53.43%
22.0	439	19.29%	72.72%
22.5	473	20.78%	93.50%
23.0	40	1.76%	95.25%
23.5	108	4.75%	100.00%
24.0	0	0.00%	100.00%
24.5	0	0.00%	100.00%
25 & More	0	0.00%	100.00%
Total	2276		



MINIMUM REQUIREMENTS
As per ISO 6935-2: 14%

ELN. AFTER FRACTURE (A)(GL-203.2 mm)	
Mean	14.361
Median	14.0
Mode	14.0
Std. Dev.	0.765
Min	12.5
Max	16.5
Count	2276

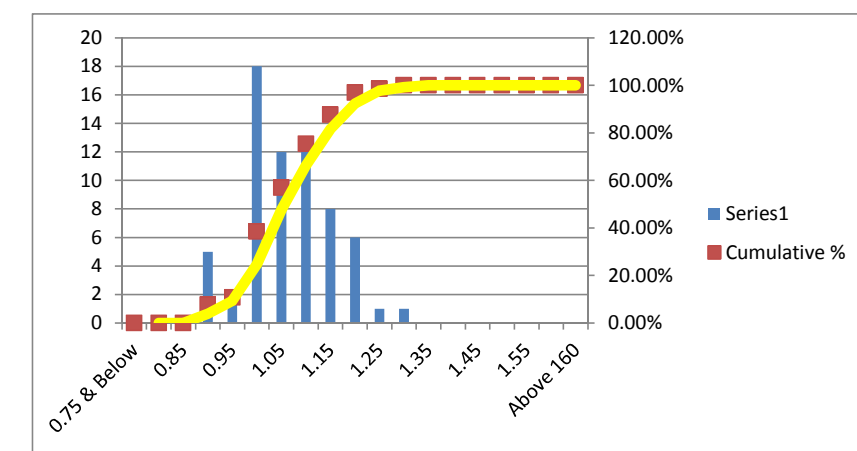
Bin	Frequency	%	Cumulative %
9.0	0	0.00%	0.00%
9.5	0	0.00%	0.00%
10.0	0	0.00%	0.00%
10.5	0	0.00%	0.00%
11.0	0	0.00%	0.00%
11.5	0	0.00%	0.00%
12.0	0	0.00%	0.00%
12.5	11	0.48%	0.48%
13.0	79	3.47%	3.95%
13.5	367	16.12%	20.08%
14.0	771	33.88%	53.95%
14.5	323	14.19%	68.15%
15.0	449	19.73%	87.87%
15.5	161	7.07%	94.95%
16.0	80	3.51%	98.46%
16.5	35	1.54%	100.00%
17.0	0	0.00%	100.00%
17.5	0	0.00%	100.00%
18 & More	0	0.00%	100.00%
Total	2276		



MINIMUM REQUIREMENTS
As per ASTM A-615: 9%

TRANSVERSE RIB HEIGHT	
Mean	1.027
Median	1.02
Mode	1.0
Std. Dev.	0.085
Min	0.85
Max	1.25
Count	65

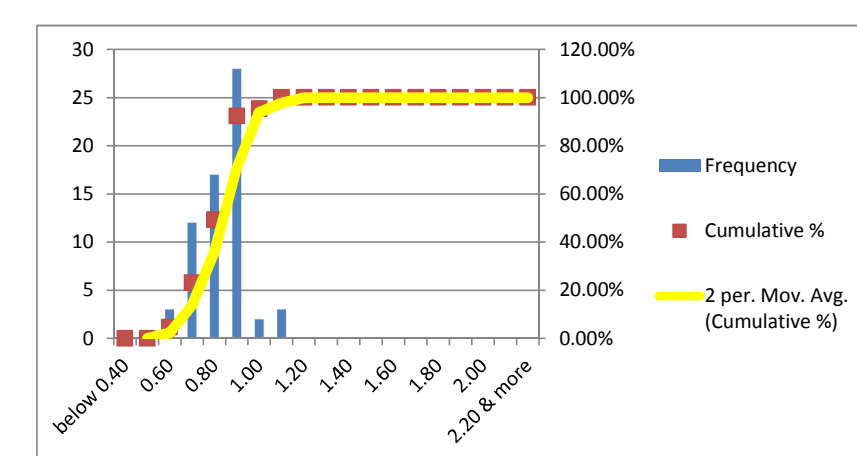
Bin	Frequency	%	Cumulative %
0.75 & Below	0	0.00%	0.00%
0.80	0	0.00%	0.00%
0.85	0	0.00%	0.00%
0.90	5	7.69%	7.69%
0.95	2	3.08%	10.77%
1.00	18	27.69%	38.46%
1.05	12	18.46%	56.92%
1.10	12	18.46%	75.38%
1.15	8	12.31%	87.69%
1.20	6	9.23%	96.92%
1.25	1	1.54%	98.46%
1.30	1	1.54%	100.00%
1.35	0	0.00%	100.00%
1.40	0	0.00%	100.00%
1.45	0	0.00%	100.00%
1.50	0	0.00%	100.00%
1.55	0	0.00%	100.00%
1.60	0	0.00%	100.00%
Above 1.60	0	0.00%	100.00%
Total	65		



MINIMUM REQUIREMENTS
As per ISO 6935-2: 0.78 mm
As per ASTM A-615: 0.51 mm

LONGITUDINAL RIB HEIGHT	
Mean	0.772
Median	0.80
Mode	0.9
Std. Dev.	0.114
Min	0.50
Max	1.08
Count	65

Bin	Frequency	%	Cumulative %
below 0.40	0	0.00%	0.00%
0.50	0	0.00%	0.00%
0.60	3	4.62%	4.62%
0.70	12	18.46%	23.08%
0.80	17	26.15%	49.23%
0.90	28	43.08%	92.31%
1.00	2	3.08%	95.38%
1.10	3	4.62%	100.00%
1.20	0	0.00%	100.00%
1.30	0	0.00%	100.00%
1.40	0	0.00%	100.00%
1.50	0	0.00%	100.00%
1.60	0	0.00%	100.00%
1.70	0	0.00%	100.00%
1.80	0	0.00%	100.00%
1.90	0	0.00%	100.00%
2.00	0	0.00%	100.00%
2.10	0	0.00%	100.00%
2.20 & more	0	0.00%	100.00%
Total	65		



MAXIMUM REQUIREMENTS
As per ISO 6935-2: 1.80 mm

BEND TEST:
ALL THE SAMPLES IN THIS CAMPAIGN PASSED THE BEND TEST MAINTAINING MANDREL DIA 3D

MINIMUM REQUIREMENTS
As per ISO 6935-2: 3D
As per ASTM A-615: 3.5D

REBEND TEST:
ALL THE SAMPLES IN THIS CAMPAIGN PASSED THE REBEND TEST MAINTAINING MANDREL DIA 4D

MINIMUM REQUIREMENTS
As per ISO 6935-2: 5D
As per ASTM A-615: Not Required

Nominal Diameter D	Unit Weight	Yield or Proof Strength R _{eH}	Ultimate Tensile Strength R _m	T/Y Ratio	% Total Elongation at Maximum Force A _{gt}	% Elongation after Fracture A	% Elongation after Fracture A	Height of Transverse Rib	Height of Longitudinal Rib
(mm)	(Kg/m)	(MPa)	(MPa)		GL:200mm	GL: 203.2 mm	GL: 5D	mm	mm
12	0.853	575	645	1.12	9.0	14.0	20.0	0.9	0.7
12	0.845	520	610	1.17	8.0	15.0	21.0		
12	0.879	525	620	1.18	9.5	15.5	22.0		
12	0.885	520	630	1.21	8.0	14.0	21.5		
12	0.879	550	635	1.15	10.0	14.0	21.5		
12	0.890	555	650	1.17	8.0	15.5	20.0		
12	0.879	545	625	1.15	9.5	14.0	20.0		
12	0.884	555	645	1.16	8.0	13.5	21.5		
12	0.872	545	635	1.17	9.5	14.0	20.0		
12	0.883	560	625	1.12	8.0	15.0	20.0		
12	0.881	560	625	1.12	9.5	14.0	21.5		
12	0.884	550	635	1.15	8.0	13.5	21.5		
12	0.889	540	615	1.14	9.0	14.0	21.0		
12	0.896	535	625	1.17	8.0	15.0	22.0		
12	0.897	525	625	1.19	9.0	15.5	21.0		
12	0.895	540	635	1.18	10.0	14.0	21.5		
12	0.879	530	610	1.15	8.0	14.0	21.5		
12	0.888	550	630	1.15	9.0	13.5	21.0		
12	0.886	525	610	1.16	8.0	15.0	21.5		
12	0.879	530	610	1.15	9.0	14.0	22.0		
12	0.879	560	635	1.13	8.0	15.0	21.0		
12	0.882	540	610	1.13	8.0	14.0	20.0		
12	0.887	535	615	1.15	9.0	14.5	20.0		
12	0.882	540	620	1.15	10.0	15.0	20.0		
12	0.882	535	615	1.15	8.0	14.0	22.5		
12	0.883	540	625	1.16	9.0	15.5	21.5		
12	0.890	530	630	1.19	10.0	14.0	22.5		
12	0.892	535	615	1.15	8.0	13.5	20.0		
12	0.892	545	630	1.16	9.0	14.0	20.0		
12	0.897	545	635	1.17	10.0	13.5	21.5		
12	0.902	560	630	1.13	8.0	13.5	21.5		
12	0.902	545	645	1.18	9.0	15.0	21.0		
12	0.873	555	630	1.14	8.0	14.0	21.5		
12	0.887	530	625	1.18	9.0	14.0	21.5		
12	0.891	530	615	1.16	8.0	15.0	21.5		
12	0.892	535	635	1.19	9.0	15.5	21.0		
12	0.882	560	660	1.18	10.0	14.0	20.0		
12	0.879	540	630	1.17	8.0	15.0	21.5		
12	0.895	545	640	1.17	9.5	14.0	21.5		
12	0.894	545	635	1.17	8.0	13.5	20.0		
12	0.892	530	630	1.19	9.0	14.0	21.0		
12	0.889	540	630	1.17	10.0	15.0	21.5		
12	0.894	540	645	1.19	8.0	14.0	21.0		
12	0.895	560	635	1.13	9.5	15.5	20.0		
12	0.894	560	660	1.18	8.0	14.0	21.5		
12	0.891	545	635	1.17	9.5	13.5	21.0		
12	0.896	545	630	1.16	8.5	14.0	21.5		
12	0.896	565	660	1.17	8.0	15.0	20.0		
12	0.883	535	625	1.17	8.0	14.0	21.0		
12	0.883	550	640	1.16	9.0	13.5	21.0		
12	0.898	545	630	1.16	8.0	14.0	20.5		
12	0.899	545	630	1.16	9.0	15.0	21.0		
12	0.888	560	635	1.13	9.0	14.0	21.0		
12	0.884	540	615	1.14	9.0	13.5	22.0		
12	0.885	550	630	1.15	10.0	14.0	21.5		
12	0.889	545	630	1.16	8.0	15.0	20.0		
12	0.889	555	625	1.13	9.0	14.0	23.5		
12	0.885	545	620	1.14	10.0	13.5	22.5		
12	0.886	550	630	1.15	8.0	14.0	21.5		
12	0.889	550	630	1.15	9.5	15.0	22.0		
12	0.892	540	625	1.16	8.0	14.0	21.0		
12	0.890	550	640	1.16	10.0	13.5	22.5		
12	0.890	545	625	1.15	9.0	14.0	21.5		
12	0.884	545	625	1.15	8.0	13.5	22.5		
12	0.896	540	625	1.16	9.5	14.0	22.0		
12	0.883	535	625	1.17	8.0	13.5	22.0		
12	0.890	535	620	1.16	10.0	14.0	22.5		
12	0.897	530	620	1.17	9.0	13.5	22.0		
12	0.892	525	615	1.17	8.0	14.0	20.0		
12	0.889	530	625	1.18	9.5	15.0	22.5		
12	0.886	540	615	1.14	8.0	14.0	21.5		

0

1.10

0.55

12	0.884	540	610	1.13	9.5	13.5	22.0	0.91	0.70
12	0.889	545	625	1.15	8.0	14.0	21.5		
12	0.883	545	620	1.14	9.0	15.0	21.5		
12	0.885	545	630	1.16	10.0	14.0	22.0		
12	0.889	550	635	1.15	8.0	13.5	21.5		
12	0.888	545	625	1.15	9.5	14.0	20.0		
12	0.885	545	640	1.17	8.0	14.0	22.0		
12	0.889	535	630	1.18	9.5	15.0	22.5		
12	0.891	535	630	1.18	8.0	14.0	22.0		
12	0.890	555	625	1.13	9.0	13.5	21.0		
12	0.894	535	625	1.17	10.0	14.0	21.5		
12	0.888	540	630	1.17	8.0	15.0	22.0		
12	0.886	535	625	1.17	9.5	14.0	22.5		
12	0.884	530	630	1.19	8.0	13.5	21.5		
12	0.887	560	660	1.18	9.5	14.0	21.5		
12	0.889	545	635	1.17	8.0	15.0	21.0		
12	0.886	545	630	1.16	9.0	14.0	21.5		
12	0.887	560	660	1.18	10.0	13.5	20.0		
12	0.883	550	625	1.14	8.0	14.0	21.5		
12	0.889	545	640	1.17	9.5	15.0	21.0		
12	0.886	530	620	1.17	8.0	14.0	20.0		
12	0.887	560	630	1.13	10.0	13.5	21.5		
12	0.882	540	635	1.18	8.0	14.0	21.0		
12	0.889	540	625	1.16	9.5	15.0	21.0		
12	0.884	550	615	1.12	8.5	14.0	21.5		
12	0.883	545	630	1.16	8.0	13.5	22.0		
12	0.886	530	625	1.18	8.0	14.0	21.5		
12	0.889	560	635	1.13	9.0	13.5	21.0		
12	0.886	545	640	1.17	8.0	14.0	21.5		
12	0.884	545	650	1.19	9.0	15.0	20.0		
12	0.883	550	635	1.15	10.0	14.0	21.5		
12	0.890	550	630	1.15	8.0	13.5	22.0		
12	0.889	545	635	1.17	9.5	14.0	22.0		
12	0.889	540	625	1.16	8.0	13.5	21.0		
12	0.886	540	625	1.16	9.0	14.0	21.5		
12	0.884	550	630	1.15	10.0	15.0	23.0		
12	0.884	550	635	1.15	9.0	14.0	21.5		
12	0.876	560	640	1.14	10.0	15.0	22.0		
12	0.883	555	645	1.16	8.0	15.0	22.0		
12	0.889	540	640	1.19	9.5	14.0	21.0		
12	0.884	545	630	1.16	8.0	14.0	20.0		
12	0.893	555	645	1.16	8.5	13.5	21.0		
12	0.900	530	625	1.18	9.0	14.5	21.5		
12	0.902	525	610	1.16	8.0	13.0	20.5		
12	0.902	525	610	1.16	8.0	13.5	20.0		
12	0.895	560	660	1.18	8.5	14.0	20.5		
12	0.898	555	650	1.17	9.0	14.0	21.0		
12	0.896	535	635	1.19	10.0	15.5	22.5		
12	0.895	540	635	1.18	10.0	16.0	23.5		
12	0.889	545	640	1.17	9.5	14.5	22.0		
12	0.893	540	635	1.18	8.5	14.0	21.0		
12	0.891	550	650	1.18	9.5	15.5	22.0		
12	0.890	545	635	1.17	9.0	14.5	21.5		
12	0.891	530	620	1.17	8.5	14.0	21.0		
12	0.895	540	630	1.17	10.0	16.5	23.5		
12	0.894	535	630	1.18	9.5	15.0	22.0		
12	0.892	545	640	1.17	10.0	15.5	22.5		
12	0.892	565	650	1.15	8.0	13.5	20.5		
12	0.896	540	635	1.18	9.0	14.0	21.0		
12	0.895	530	620	1.17	9.0	14.0	21.0		
12	0.894	535	620	1.16	9.5	14.5	21.5		
12	0.892	565	655	1.16	8.0	13.5	20.0		
12	0.895	550	640	1.16	9.5	15.0	22.0		
12	0.896	535	630	1.18	9.5	15.5	22.0		
12	0.894	535	625	1.17	8.5	14.0	21.0		
12	0.888	550	635	1.15	10.0	16.0	23.0		
12	0.891	540	630	1.17	9.5	14.5	22.0		
12	0.892	560	645	1.15	8.5	15.0	21.0		
12	0.890	535	625	1.17	10.0	15.5	22.5		
12	0.899	540	635	1.18	9.5	16.0	22.5		
12	0.897	560	655	1.17	8.5	14.0	21.0		
12	0.900	560	650	1.16	8.0	13.5	20.5		
12	0.901	535	630	1.18	9.5	15.0	22.0		
12	0.880	540	635	1.18	9.5	15.5	22.0		
12	0.891	545	640	1.17	9.0	14.5	21.5		
12	0.896	525	615	1.17	8.5	14.0	21.0		

0.91

0.70

1.04

0.85

12	0.893	525	605	1.15	8.0	13.5	20.0	1.15	0.83
12	0.871	555	655	1.18	8.0	13.0	20.5		
12	0.892	535	630	1.18	9.5	14.5	22.0		
12	0.881	530	615	1.16	9.0	13.0	20.5		
12	0.885	535	625	1.17	9.0	14.5	21.5		
12	0.889	560	655	1.17	8.5	14.0	21.0		
12	0.895	545	635	1.17	9.5	15.0	22.0		
12	0.892	535	620	1.16	9.0	14.0	21.0		
12	0.893	545	630	1.16	10.0	16.0	22.5		
12	0.896	560	650	1.16	8.5	13.5	21.0		
12	0.894	535	620	1.16	8.5	14.0	21.0		
12	0.895	530	605	1.14	9.0	14.0	21.0		
12	0.896	530	605	1.14	8.0	13.0	20.5		
12	0.893	540	630	1.17	9.0	14.5	21.5		
12	0.895	570	650	1.14	8.5	13.5	21.0		
12	0.892	535	620	1.16	8.5	14.0	21.0		
12	0.893	560	645	1.15	9.0	14.5	21.5		
12	0.895	550	640	1.16	8.5	13.5	21.0		
12	0.894	560	650	1.16	8.0	14.0	21.0		
12	0.896	565	660	1.17	8.0	13.0	20.0		
12	0.887	560	650	1.16	9.0	14.5	21.5		
12	0.888	540	620	1.15	9.5	15.0	21.5		
12	0.891	540	625	1.16	9.0	14.5	21.5		
12	0.890	555	645	1.16	9.5	14.0	21.5		
12	0.889	555	660	1.19	8.5	13.5	21.0		
12	0.893	535	635	1.19	10.0	15.5	22.5		
12	0.892	560	655	1.17	8.0	13.0	20.5		
12	0.895	540	620	1.15	8.0	13.0	19.0		
12	0.871	540	620	1.15	10.0	15.5	22.5		
12	0.892	540	615	1.14	8.5	14.0	21.0		
12	0.881	560	640	1.14	9.0	14.5	21.5		
12	0.885	545	625	1.15	9.0	15.0	21.5		
12	0.894	555	640	1.15	8.5	14.0	21.0		
12	0.890	535	625	1.17	8.0	13.0	20.5		
12	0.893	545	630	1.16	9.0	14.5	21.5		
12	0.892	535	615	1.15	10.0	14.0	21.5		
12	0.898	530	615	1.16	8.5	14.0	21.0		
12	0.890	535	620	1.16	9.0	14.5	21.5		
12	0.893	540	620	1.15	8.5	14.0	21.0		
12	0.892	540	620	1.15	8.5	14.0	21.0		
12	0.898	530	610	1.15	10.0	16.0	22.5		
12	0.892	550	630	1.15	9.5	15.0	22.0		
12	0.893	545	625	1.15	10.0	16.5	23.5		
12	0.892	555	645	1.16	9.0	14.5	21.5		
12	0.896	525	610	1.16	8.0	13.0	20.0		
12	0.891	530	615	1.16	8.0	13.5	20.5		
12	0.894	540	625	1.16	8.0	13.0	20.0		
12	0.892	530	615	1.16	10.5	16.5	23.5		
12	0.899	535	620	1.16	9.5	14.5	22.0		
12	0.895	560	655	1.17	9.0	15.0	21.5		
12	0.897	545	635	1.17	9.0	14.5	21.5		
12	0.896	545	630	1.16	8.5	13.5	21.0		
12	0.892	560	665	1.19	9.0	14.5	21.5		
12	0.896	535	625	1.17	9.5	15.0	22.0		
12	0.894	550	640	1.16	8.5	14.0	21.0		
12	0.892	545	630	1.16	8.5	14.0	21.0		
12	0.887	530	630	1.19	8.0	13.0	20.0		
12	0.890	560	650	1.16	9.0	14.5	21.5		
12	0.892	540	620	1.15	9.0	13.5	21.0		
12	0.889	550	630	1.15	8.5	14.0	21.0		
12	0.888	545	630	1.16	8.5	14.0	21.0		
12	0.892	560	650	1.16	8.5	14.0	21.0		
12	0.891	545	640	1.17	9.0	13.5	21.0		
12	0.890	545	625	1.15	9.0	14.5	21.5		
12	0.896	550	630	1.15	8.0	13.0	20.0		
12	0.896	545	640	1.17	10.0	16.0	22.5		
12	0.892	540	630	1.17	9.5	15.0	22.0		
12	0.893	525	610	1.16	8.0	13.0	20.0		
12	0.887	530	625	1.18	8.5	14.0	21.0		
12	0.889	555	650	1.17	9.0	14.5	21.5		
12	0.891	530	620	1.17	8.5	14.0	21.0		
12	0.890	525	605	1.15	8.0	13.0	20.0		
12	0.889	525	615	1.17	8.0	13.5	20.5		
12	0.892	530	605	1.14	8.5	14.0	20.5		
12	0.896	520	600	1.15	9.0	13.0	20.0		
12	0.895	530	610	1.15	9.0	14.0	21.0		

1.15

0.83

1.16

1.03

12	0.894	535	610	1.14	8.5	14.0	21.0	1.07	0.50
12	0.896	555	650	1.17	9.0	13.5	21.0		
12	0.891	535	615	1.15	9.0	14.5	21.5		
12	0.892	535	625	1.17	9.5	15.0	22.0		
12	0.886	530	615	1.16	9.0	14.5	21.5		
12	0.889	535	620	1.16	8.5	14.0	21.0		
12	0.890	530	615	1.16	8.5	13.5	21.0		
12	0.888	540	635	1.18	9.0	14.5	21.5		
12	0.890	520	600	1.15	8.0	13.0	20.0		
12	0.897	560	655	1.17	9.0	14.5	21.5		
12	0.899	545	635	1.17	9.0	15.0	21.5		
12	0.898	545	630	1.16	8.5	14.0	21.0		
12	0.898	560	665	1.19	9.0	14.5	21.5		
12	0.891	535	625	1.17	8.5	13.5	21.0		
12	0.896	550	640	1.16	8.5	14.0	21.0		
12	0.895	545	630	1.16	9.0	14.0	21.0		
12	0.893	530	630	1.19	8.5	13.5	20.0		
12	0.892	560	650	1.16	9.0	15.0	21.5		
12	0.894	540	615	1.14	8.5	14.0	21.0		
12	0.896	550	630	1.15	8.5	14.5	21.0		
12	0.895	545	630	1.16	9.0	14.0	21.0		
12	0.897	560	650	1.16	8.5	13.5	21.0		
12	0.896	545	640	1.17	9.0	14.0	21.0		
12	0.895	545	625	1.15	9.5	14.5	21.5		
12	0.894	550	635	1.15	8.0	13.0	20.0		
12	0.896	555	640	1.15	9.5	15.0	21.5		
12	0.897	540	620	1.15	8.5	14.0	21.0		
12	0.898	530	615	1.16	9.0	15.0	21.5		
12	0.897	535	620	1.16	9.5	15.5	22.0		
12	0.889	545	630	1.16	9.0	14.0	22.0		
12	0.888	560	645	1.15	10.0	15.0	21.0		
12	0.886	545	630	1.16	9.0	14.0	22.0		
12	0.885	540	630	1.17	9.0	14.0	22.5		
12	0.881	555	645	1.16	10.0	15.0	21.0		
12	0.879	540	630	1.17	9.0	14.0	22.5		
12	0.882	550	635	1.15	9.5	14.5	22.0		
12	0.881	540	625	1.16	9.0	14.0	22.5		
12	0.883	535	615	1.15	8.5	13.5	22.5		
12	0.880	555	645	1.16	10.0	15.0	21.5		
12	0.884	545	625	1.15	9.0	14.0	22.0		
12	0.882	555	645	1.16	10.0	15.0	21.5		
12	0.889	545	630	1.16	9.0	14.0	22.0		
12	0.887	550	640	1.16	10.0	15.0	22.0		
12	0.886	545	625	1.15	9.0	14.0	22.0		
12	0.882	540	625	1.16	9.0	14.0	22.5		
12	0.881	545	625	1.15	9.0	14.0	22.0		
12	0.881	545	630	1.16	9.0	14.0	22.0		
12	0.882	550	635	1.15	9.5	14.5	22.0		
12	0.883	555	645	1.16	10.0	15.0	21.5		
12	0.884	545	630	1.16	9.0	14.0	22.0		
12	0.883	545	625	1.15	9.0	14.0	22.0		
12	0.882	545	630	1.16	9.0	14.0	22.0		
12	0.880	540	620	1.15	8.5	13.5	22.5		
12	0.881	550	630	1.15	9.0	14.0	22.0		
12	0.882	550	635	1.15	9.5	14.5	22.0		
12	0.884	550	635	1.15	9.5	14.5	22.0		
12	0.883	545	625	1.15	9.0	14.0	22.0		
12	0.882	545	635	1.17	9.5	14.5	22.0		
12	0.881	550	635	1.15	9.5	14.5	22.0		
12	0.880	550	640	1.16	10.0	15.0	22.0		
12	0.883	550	635	1.15	9.5	14.5	22.0		
12	0.883	555	645	1.16	10.0	15.0	21.5		
12	0.884	560	655	1.17	10.5	15.5	21.0		
12	0.882	555	650	1.17	10.0	15.0	21.5		
12	0.883	550	635	1.15	9.5	14.5	22.0		
12	0.884	545	630	1.16	9.0	14.0	22.0		
12	0.882	540	625	1.16	9.0	14.0	22.5		
12	0.883	535	615	1.15	8.5	13.5	22.5		
12	0.881	545	630	1.16	9.0	14.0	22.0		
12	0.882	555	645	1.16	10.0	15.0	21.5		
12	0.883	550	640	1.16	10.0	15.0	22.0		
12	0.883	550	635	1.15	9.5	14.5	22.0		
12	0.886	545	625	1.15	9.0	14.0	22.0		
12	0.885	545	630	1.16	9.0	14.0	22.0		
12	0.889	550	635	1.15	9.5	14.5	22.0		
12	0.882	550	630	1.15	9.0	14.0	22.0		

0.9

0.8

12	0.883	555	640	1.15	10.0	15.0	21.5	1.15	0.85
12	0.887	550	635	1.15	9.0	14.5	22.0		
12	0.889	545	625	1.15	9.0	14.0	22.0		
12	0.882	545	625	1.15	9.0	14.0	22.0		
12	0.886	540	620	1.15	8.5	13.5	22.5		
12	0.890	545	630	1.16	9.0	14.0	22.0		
12	0.891	555	645	1.16	10.0	15.0	21.5		
12	0.886	550	640	1.16	10.0	15.0	22.0		
12	0.887	545	630	1.16	9.0	14.0	22.0		
12	0.889	545	635	1.17	9.5	14.5	22.0		
12	0.887	555	645	1.16	10.0	15.0	21.5		
12	0.882	550	640	1.16	10.0	15.0	22.0		
12	0.883	545	635	1.17	9.5	14.5	22.0		
12	0.884	555	645	1.16	10.0	15.0	21.5		
12	0.885	545	630	1.16	9.0	14.0	22.0		
12	0.883	545	635	1.17	9.5	14.5	22.0		
12	0.882	545	630	1.16	9.0	14.0	22.0		
12	0.885	535	615	1.15	8.5	13.5	22.5		
12	0.883	545	625	1.15	9.0	14.0	22.0		
12	0.882	540	620	1.15	8.5	13.5	22.5		
12	0.880	550	640	1.16	10.0	15.0	22.0		
12	0.886	545	630	1.16	9.0	14.0	22.0		
12	0.884	535	615	1.15	8.5	13.5	22.5		
12	0.885	535	615	1.15	8.5	13.5	22.5		
12	0.882	535	615	1.15	8.5	13.5	22.5		
12	0.881	540	630	1.17	9.0	14.0	22.5		
12	0.882	550	640	1.16	10.0	15.0	22.0		
12	0.883	540	630	1.17	9.0	14.0	22.5		
12	0.880	545	630	1.16	9.0	14.0	22.0		
12	0.884	540	625	1.16	9.0	14.0	22.5		
12	0.885	540	630	1.17	9.0	14.0	22.5		
12	0.886	540	630	1.17	9.0	14.0	22.5		
12	0.882	545	635	1.17	9.5	14.0	22.0		
12	0.886	555	650	1.17	10.0	15.0	21.5		
12	0.884	545	630	1.16	9.0	14.0	22.0		
12	0.882	545	630	1.16	9.0	14.0	22.0		
12	0.885	550	635	1.15	9.5	14.5	22.0		
12	0.882	545	635	1.17	9.5	14.5	22.0		
12	0.883	545	630	1.16	9.0	14.0	22.0		
12	0.884	555	645	1.16	10.0	15.0	21.5		
12	0.885	550	640	1.16	10.0	15.0	22.0		
12	0.883	545	630	1.16	9.0	14.0	22.0		
12	0.884	540	630	1.17	9.0	14.0	22.5		
12	0.889	535	615	1.15	8.5	13.5	22.5		
12	0.890	545	635	1.17	9.5	14.5	22.0		
12	0.884	535	615	1.15	8.5	13.5	22.5		
12	0.883	550	640	1.16	10.0	15.0	22.0		
12	0.885	535	615	1.15	8.5	13.5	22.5		
12	0.886	535	615	1.15	8.5	13.5	22.5		
12	0.884	545	635	1.17	9.5	14.5	22.0		
12	0.886	540	625	1.16	9.0	14.0	22.5		
12	0.887	545	625	1.15	9.0	14.0	22.5		
12	0.886	550	630	1.15	9.0	14.0	22.0		
12	0.888	550	640	1.16	10.0	15.0	22.0		
12	0.887	545	630	1.16	9.0	14.0	22.0		
12	0.885	545	635	1.17	9.5	14.5	22.0		
12	0.889	540	630	1.17	9.0	14.0	22.5		
12	0.887	545	630	1.16	9.0	14.0	22.0		
12	0.886	550	640	1.16	10.0	15.0	22.0		
12	0.885	540	630	1.17	9.0	14.0	22.5		
12	0.884	545	635	1.17	9.5	14.5	22.0		
12	0.888	545	630	1.16	9.0	14.0	22.0		
12	0.887	550	635	1.15	9.5	14.5	22.0		
12	0.886	530	615	1.16	8.5	13.5	23.0		
12	0.885	540	625	1.16	9.0	14.0	22.5		
12	0.884	555	645	1.16	10.0	15.0	21.5		
12	0.886	550	645	1.17	10.0	15.0	22.0		
12	0.882	540	630	1.17	9.0	14.0	22.5		
12	0.884	545	635	1.17	9.5	14.5	22.0		
12	0.885	555	650	1.17	10.0	15.0	21.5		
12	0.886	550	635	1.15	9.5	14.5	22.0		
12	0.887	535	615	1.15	8.5	13.5	22.5		
12	0.884	540	625	1.16	9.0	14.0	22.5		
12	0.886	550	635	1.15	9.5	14.5	22.0		
12	0.889	545	630	1.16	9.0	14.0	22.0		
12	0.887	530	610	1.15	8.5	13.5	23.0		

12	0.886	540	625	1.16	9.0	14.0	22.5	1.16	0.78		
12	0.884	550	640	1.16	10.0	15.0	22.0				
12	0.889	545	630	1.16	9.0	14.0	22.0				
12	0.888	535	625	1.17	9.0	14.0	22.5				
12	0.887	545	635	1.17	9.5	14.5	22.0				
12	0.885	550	635	1.15	9.5	14.5	22.0				
12	0.886	550	640	1.16	10.0	15.0	22.0				
12	0.886	535	615	1.15	8.5	13.5	22.5				
12	0.887	540	625	1.16	9.0	14.0	22.5				
12	0.889	555	645	1.16	10.0	15.0	21.5				
12	0.884	550	640	1.16	10.0	15.0	22.0				
12	0.886	535	615	1.15	8.5	13.5	22.5				
12	0.887	545	635	1.17	9.5	14.5	22.0				
12	0.889	550	640	1.16	10.0	15.0	22.0				
12	0.888	545	635	1.17	9.5	14.5	22.0				
12	0.888	530	610	1.15	8.5	13.5	23.0				
12	0.886	540	630	1.17	9.0	14.0	22.5				
12	0.887	545	635	1.17	9.5	14.5	22.0				
12	0.889	540	625	1.16	9.0	14.0	22.5				
12	0.888	535	615	1.15	8.5	13.5	22.5				
12	0.885	535	615	1.15	8.5	13.5	22.5				
12	0.871	545	605	1.11	10.0	13.5	20.0			1.06	0.70
12	0.882	545	625	1.15	8.0	14.0	21.5				
12	0.879	545	630	1.16	9.0	15.0	22.0				
12	0.882	535	615	1.15	10.0	14.0	21.0				
12	0.872	525	620	1.18	8.0	14.0	21.0				
12	0.879	545	620	1.14	9.0	15.0	21.0				
12	0.880	540	630	1.17	10.0	14.5	21.5				
12	0.866	545	640	1.17	8.0	13.5	21.5				
12	0.872	540	605	1.12	9.5	14.0	22.0				
12	0.882	545	605	1.11	8.0	15.0	22.5				
12	0.881	545	645	1.18	9.5	14.0	21.0				
12	0.882	560	645	1.15	8.0	15.5	21.0				
12	0.879	560	645	1.15	9.5	14.0	22.0				
12	0.883	560	640	1.14	8.0	15.0	22.0				
12	0.885	535	615	1.15	9.5	14.0	21.5				
12	0.884	550	610	1.11	8.0	15.5	21.5				
12	0.880	545	630	1.16	9.5	14.0	21.5				
12	0.885	560	625	1.12	8.0	15.5	20.0				
12	0.886	555	615	1.11	9.0	13.5	21.0				
12	0.886	555	625	1.13	10.0	14.0	21.5				
12	0.881	560	630	1.13	8.0	13.5	21.0				
12	0.886	555	620	1.12	9.5	15.0	21.5				
12	0.884	560	620	1.11	8.0	13.5	21.5				
12	0.887	560	630	1.13	9.5	13.5	20.0				
12	0.888	550	615	1.12	8.0	14.0	22.5				
12	0.880	560	630	1.13	9.5	14.5	21.5				
12	0.886	565	625	1.11	8.0	15.5	21.0				
12	0.884	545	615	1.13	9.0	14.0	22.5				
12	0.896	560	620	1.11	10.0	14.0	21.0				
12	0.891	560	625	1.12	10.0	15.5	21.0				
12	0.900	550	650	1.18	8.0	13.5	21.5				
12	0.900	540	615	1.14	9.5	15.0	22.5				
12	0.891	555	620	1.12	8.0	14.0	21.5				
12	0.892	540	615	1.14	9.0	14.0	21.0				
12	0.890	550	635	1.15	8.0	15.0	21.5				
12	0.891	550	635	1.15	9.5	13.5	22.5				
12	0.888	545	615	1.13	8.5	14.0	20.0	1.07	1.05		
12	0.890	560	650	1.16	8.0	15.5	21.5				
12	0.891	545	630	1.16	9.0	15.0	21.5				
12	0.892	555	650	1.17	8.5	14.0	22.5				
12	0.884	545	630	1.16	9.0	14.0	21.0				
12	0.889	540	630	1.17	10.0	13.5	21.5				
12	0.890	555	645	1.16	10.0	14.0	21.5				
12	0.891	550	635	1.15	8.0	14.0	21.0				
12	0.890	555	650	1.17	9.0	13.5	22.0				
12	0.894	555	645	1.16	8.0	14.0	21.5				
12	0.895	550	645	1.17	9.0	15.0	22.5				
12	0.892	540	640	1.19	10.0	14.0	21.0				
12	0.894	545	620	1.14	8.0	13.5	23.0				
12	0.895	555	625	1.13	9.5	14.0	21.5				
12	0.893	555	640	1.15	8.5	15.0	21.5				
12	0.891	545	640	1.17	9.0	14.5	22.5				
12	0.894	545	620	1.14	8.0	14.0	22.5				
12	0.896	550	640	1.16	9.5	13.5	23.5				
12	0.895	550	645	1.17	8.0	14.0	21.0				

12	0.892	555	645	1.16	9.5	14.0	21.0	1.02	1.08
12	0.891	550	645	1.17	8.0	15.0	21.5		
12	0.879	550	655	1.19	10.0	14.0	23.5		
12	0.885	550	645	1.17	10.0	13.5	21.0		
12	0.884	555	645	1.16	8.0	14.0	21.0		
12	0.886	555	640	1.15	9.0	15.0	23.0		
12	0.882	540	630	1.17	10.0	14.0	21.5		
12	0.890	555	650	1.17	8.0	15.5	21.5		
12	0.891	545	645	1.18	9.5	14.0	22.5		
12	0.894	535	630	1.18	8.0	13.5	23.0		
12	0.890	545	650	1.19	9.5	14.0	21.5		
12	0.891	545	645	1.18	8.0	15.0	21.5		
12	0.892	550	620	1.13	9.5	15.5	23.5		
12	0.893	555	640	1.15	8.0	14.0	22.5		
12	0.895	545	645	1.18	9.0	14.0	20.0		
12	0.896	555	650	1.17	10.0	13.5	21.5		
12	0.891	545	645	1.18	8.0	14.0	21.5		
12	0.894	540	630	1.17	9.5	15.0	21.5		
12	0.893	540	645	1.19	8.0	14.0	21.5		
12	0.891	540	640	1.19	9.0	13.5	23.0		
12	0.895	550	630	1.15	10.0	14.0	21.5		
12	0.896	555	630	1.14	8.0	15.0	20.0		
12	0.891	560	630	1.13	9.5	14.0	21.5		
12	0.891	550	625	1.14	8.0	13.5	21.0		
12	0.893	540	615	1.14	9.5	14.0	20.0		
12	0.890	540	625	1.16	8.0	15.0	20.5		
12	0.880	540	625	1.16	9.5	14.0	21.0		
12	0.884	550	625	1.14	8.5	14.0	21.0		
12	0.885	550	615	1.12	10.0	13.5	21.5		
12	0.886	535	615	1.15	8.0	15.5	21.5		
12	0.891	535	600	1.12	9.0	14.0	20.5		
12	0.893	535	615	1.15	10.0	15.5	21.5		
12	0.894	540	615	1.14	8.0	14.0	21.0		
12	0.891	530	620	1.17	9.5	13.5	21.5		
12	0.892	535	615	1.15	8.0	14.0	20.5		
12	0.897	535	610	1.14	9.5	15.0	21.5		
12	0.891	540	610	1.13	8.0	14.0	21.0		
12	0.895	525	615	1.17	9.0	13.5	20.0		
12	0.891	535	610	1.14	8.5	14.0	20.0		
12	0.892	535	610	1.14	9.0	15.0	20.0		
12	0.891	550	615	1.12	8.5	14.0	20.5		
12	0.894	545	625	1.15	9.5	13.5	21.0		
12	0.893	545	620	1.14	10.0	14.0	20.5		
12	0.891	535	615	1.15	8.0	15.0	21.0		
12	0.891	535	610	1.14	9.0	14.0	20.5		
12	0.891	550	620	1.13	10.0	13.5	21.0		
12	0.896	535	615	1.15	8.0	14.0	23.0		
12	0.894	535	605	1.13	9.5	15.0	21.0		
12	0.893	535	605	1.13	8.0	14.0	21.0		
12	0.894	540	620	1.15	9.5	15.0	21.0		
12	0.897	550	640	1.16	8.0	13.5	22.5		
12	0.880	545	620	1.14	9.5	15.0	21.5		
12	0.885	545	625	1.15	8.0	14.0	22.5		
12	0.886	535	615	1.15	9.5	15.0	20.0		
12	0.884	530	610	1.15	8.5	14.0	22.5		
12	0.883	540	625	1.16	8.0	14.5	21.5		
12	0.881	540	620	1.15	9.0	14.0	22.0		
12	0.889	545	630	1.16	8.0	15.0	21.5		
12	0.892	545	625	1.15	9.5	14.0	21.5		
12	0.894	545	630	1.16	8.0	13.5	21.5		
12	0.892	530	625	1.18	10.0	15.0	22.0		
12	0.883	550	640	1.16	8.0	14.0	21.5		
12	0.891	545	635	1.17	9.5	13.5	20.0		
12	0.889	545	630	1.16	8.0	14.0	22.0		
12	0.896	535	630	1.18	9.5	14.5	22.0		
12	0.893	535	615	1.15	8.0	13.5	22.0		
12	0.891	530	625	1.18	9.0	14.0	22.5		
12	0.894	535	615	1.15	8.0	15.0	22.5		
12	0.895	525	625	1.19	9.5	14.0	21.0		
12	0.894	530	610	1.15	8.0	13.5	23.5		
12	0.896	545	620	1.14	9.0	14.0	22.5		
12	0.891	530	630	1.19	10.0	15.0	22.0		
12	0.888	545	610	1.12	8.0	14.0	22.0		
12	0.885	545	625	1.15	9.0	13.5	22.5		
12	0.886	540	625	1.16	10.0	14.0	22.0		
12	0.890	525	615	1.17	8.0	14.0	22.5		

1.02

1.08

1.01

0.85

12	0.891	535	610	1.14	9.5	15.0	22.5	0.98	0.85
12	0.893	540	610	1.13	8.0	14.0	21.5		
12	0.891	540	625	1.16	10.0	13.5	22.5		
12	0.888	535	620	1.16	8.0	14.0	20.5		
12	0.892	540	620	1.15	9.5	15.0	21.5		
12	0.889	535	635	1.19	8.0	13.5	22.0		
12	0.893	530	615	1.16	9.0	14.0	21.5		
12	0.889	550	640	1.16	8.0	15.0	21.5		
12	0.887	545	630	1.16	9.0	14.0	23.5		
12	0.900	555	645	1.16	9.5	15.0	22.0		
12	0.898	555	645	1.16	10.0	16.0	22.5		
12	0.896	550	640	1.16	8.5	13.5	21.0		
12	0.897	540	620	1.15	10.5	16.5	23.5		
12	0.894	540	625	1.16	9.0	14.5	21.5		
12	0.892	555	640	1.15	10.0	16.5	23.5		
12	0.891	555	640	1.15	9.0	14.5	21.5		
12	0.892	545	625	1.15	10.0	15.5	22.5		
12	0.897	545	640	1.17	10.0	16.0	22.5		
12	0.896	550	645	1.17	10.5	16.5	23.5		
12	0.895	555	655	1.18	8.5	14.0	21.0		
12	0.897	555	645	1.16	8.5	13.5	21.0		
12	0.883	545	640	1.17	9.5	15.0	22.0		
12	0.896	550	630	1.15	10.0	16.5	23.5		
12	0.893	555	650	1.17	8.5	14.0	21.0		
12	0.894	555	655	1.18	8.5	13.5	21.0		
12	0.887	540	630	1.17	9.5	15.5	22.5		
12	0.893	555	650	1.17	9.0	14.5	21.5		
12	0.890	555	645	1.16	9.0	14.0	21.5		
12	0.891	535	620	1.16	10.0	15.5	22.5		
12	0.888	545	640	1.17	9.0	14.5	21.5		
12	0.895	545	645	1.18	10.0	16.5	23.5		
12	0.893	550	650	1.18	9.0	14.5	21.5		
12	0.894	555	655	1.18	9.0	14.5	21.5		
12	0.897	535	630	1.18	9.5	15.0	22.0		
12	0.899	555	645	1.16	10.0	16.0	22.5		
12	0.895	545	640	1.17	8.0	13.5	20.0		
12	0.896	540	630	1.17	9.0	14.5	21.5		
12	0.886	540	630	1.17	10.0	15.5	22.5		
12	0.891	540	640	1.19	10.5	16.5	23.5		
12	0.892	550	650	1.18	9.0	14.5	21.5		
12	0.890	555	650	1.17	8.0	13.0	20.0		
12	0.893	540	630	1.17	9.0	14.5	21.5		
12	0.896	560	650	1.16	8.5	13.5	21.0		
12	0.895	535	620	1.16	8.5	13.5	21.0		
12	0.896	560	645	1.15	9.0	14.0	21.5		
12	0.890	550	640	1.16	9.5	15.0	22.0		
12	0.897	560	650	1.16	8.5	13.5	21.0		
12	0.895	565	660	1.17	8.0	13.0	20.0		
12	0.897	560	645	1.15	9.0	14.5	21.5		
12	0.894	540	620	1.15	8.5	14.0	21.0		
12	0.899	540	625	1.16	9.0	13.5	21.5		
12	0.897	555	645	1.16	9.0	14.0	21.5		
12	0.895	555	660	1.19	8.5	13.5	21.0		
12	0.889	535	635	1.19	10.0	15.5	22.5		
12	0.892	560	655	1.17	8.5	13.0	20.5		
12	0.894	540	620	1.15	8.5	13.0	20.0		
12	0.892	540	620	1.15	10.0	15.0	22.5		
12	0.887	540	615	1.14	8.5	14.0	21.0		
12	0.889	560	645	1.15	8.5	14.5	21.5		
12	0.891	545	625	1.15	9.0	14.0	21.5		
12	0.890	555	635	1.14	8.5	14.0	21.0		
12	0.892	535	610	1.14	8.0	13.5	20.5		
12	0.896	545	620	1.14	9.0	14.5	21.5		
12	0.894	535	615	1.15	9.0	14.0	21.5		
12	0.893	530	610	1.15	8.5	13.5	21.0		
12	0.889	535	620	1.16	9.0	14.0	21.5		
12	0.891	540	620	1.15	8.5	13.5	21.0		
12	0.892	540	620	1.15	8.5	14.0	21.0		
12	0.893	530	610	1.15	10.0	15.5	22.5		
12	0.890	550	630	1.15	9.5	15.0	22.0		
12	0.892	545	625	1.15	10.5	16.5	23.5		
12	0.896	555	635	1.14	9.0	14.5	21.5		
12	0.895	525	610	1.16	8.5	13.0	20.0		
12	0.894	530	620	1.17	8.0	13.0	20.5		
12	0.893	540	620	1.15	8.0	13.0	20.0		
12	0.892	530	615	1.16	10.0	16.0	23.5		

12	0.894	535	620	1.16	9.0	14.5	21.5		
12	0.891	560	650	1.16	8.5	13.5	20.5		
12	0.888	555	655	1.18	8.5	14.0	21.0		
12	0.910	540	640	1.19	9.5	15.0	22.0		
12	0.897	540	640	1.19	9.5	15.5	22.5		
12	0.896	565	655	1.16	8.5	13.5	21.0		
12	0.895	550	645	1.17	9.0	14.0	21.5		
12	0.896	535	630	1.18	9.5	15.5	22.5		
12	0.893	560	650	1.16	8.5	14.0	21.0		
12	0.894	535	625	1.17	8.5	13.5	21.0		
12	0.892	545	630	1.16	9.5	15.0	22.0		
12	0.891	545	640	1.17	9.0	14.5	21.5		
12	0.890	540	635	1.18	10.0	15.5	22.5		
12	0.892	540	630	1.17	10.0	16.0	22.5		
12	0.896	550	645	1.17	8.5	13.5	21.0		
12	0.897	555	655	1.18	8.5	14.0	21.0		
12	0.896	540	630	1.17	9.5	15.0	22.0		
12	0.895	530	620	1.17	8.0	13.0	20.5		
12	0.892	560	655	1.17	8.0	14.0	21.0		
12	0.894	540	635	1.18	9.0	14.5	21.5		
12	0.896	545	655	1.20	9.5	15.0	22.0		
12	0.889	560	655	1.17	8.5	13.5	21.0		
12	0.892	565	655	1.16	8.0	13.0	20.5		
12	0.893	540	635	1.18	9.5	15.0	22.0		
12	0.894	560	655	1.17	8.5	13.0	20.5		
12	0.895	555	660	1.19	9.0	13.5	21.0		
12	0.896	540	640	1.19	10.0	15.5	22.5		
12	0.897	560	655	1.17	8.5	14.0	21.0		
12	0.898	550	645	1.17	9.0	15.0	22.0		
12	0.896	540	635	1.18	10.0	15.5	22.5		
12	0.895	565	650	1.15	8.5	14.0	21.0		
12	0.893	540	635	1.18	9.0	14.5	21.5		
12	0.889	550	645	1.17	10.0	15.0	22.5		
12	0.886	545	640	1.17	9.5	15.5	22.5		
12	0.890	530	615	1.16	8.0	13.5	20.5		
12	0.891	540	635	1.18	10.0	15.0	22.5		
12	0.887	555	650	1.17	8.5	14.0	21.0		
12	0.889	545	630	1.16	9.5	15.0	22.0		
12	0.891	560	650	1.16	8.5	14.5	21.5		
12	0.892	545	635	1.17	10.0	16.0	23.0		
12	0.890	560	650	1.16	8.5	13.5	21.0		
12	0.891	555	645	1.16	8.5	14.0	21.0		
12	0.896	530	625	1.18	9.0	14.5	21.5		
12	0.895	525	610	1.16	8.0	13.0	20.5		
12	0.893	525	610	1.16	8.0	13.0	20.0		
12	0.889	560	660	1.18	8.5	13.5	20.5		
12	0.891	555	650	1.17	8.5	14.0	21.0		
12	0.893	535	635	1.19	9.5	15.5	22.5		
12	0.892	540	635	1.18	10.0	16.0	23.5		
12	0.890	545	640	1.17	9.5	14.5	22.0		
12	0.895	540	635	1.18	8.5	14.0	21.0		
12	0.894	550	650	1.18	9.5	15.0	22.0		
12	0.893	545	635	1.17	9.0	14.5	21.5		
12	0.890	530	620	1.17	8.5	14.0	21.0		
12	0.894	540	630	1.17	10.5	16.0	23.5		
12	0.893	535	630	1.18	9.5	15.0	22.0		
12	0.892	545	640	1.17	10.0	15.5	22.5		
12	0.887	565	650	1.15	8.0	13.5	20.5		
12	0.889	540	635	1.18	8.5	14.0	21.0		
12	0.891	530	620	1.17	8.5	13.5	21.0		
12	0.890	535	620	1.16	8.0	14.5	21.5		
12	0.886	560	655	1.17	8.0	13.5	20.0		
12	0.889	550	640	1.16	9.5	15.0	22.0		
12	0.887	535	630	1.18	9.0	14.5	22.0		
12	0.890	535	625	1.17	8.5	14.0	21.0		
12	0.886	555	650	1.17	10.0	15.0	21.5		
12	0.884	545	630	1.16	9.0	14.0	22.0		
12	0.882	545	630	1.16	9.0	14.0	22.0		
12	0.885	550	635	1.15	9.5	14.5	22.0		
12	0.882	545	635	1.17	9.5	14.5	22.0		
12	0.883	545	630	1.16	9.0	14.0	22.0		
12	0.884	555	645	1.16	10.0	15.0	21.5		
12	0.885	550	640	1.16	10.0	15.0	22.0		
12	0.883	545	630	1.16	9.0	14.0	22.0		
12	0.884	540	630	1.17	9.0	14.0	22.5		
12	0.889	535	615	1.15	8.5	13.5	22.5		

1.25

0.95

12	0.890	545	635	1.17	9.5	14.5	22.0	1.05	0.78
12	0.884	535	615	1.15	8.5	13.5	22.5		
12	0.883	550	640	1.16	10.0	15.0	22.0		
12	0.885	535	615	1.15	8.5	13.5	22.5		
12	0.886	535	615	1.15	8.5	13.5	22.5		
12	0.884	545	635	1.17	9.5	14.5	22.0		
12	0.886	540	625	1.16	9.0	14.0	22.5		
12	0.887	545	625	1.15	9.0	14.0	22.5		
12	0.886	550	630	1.15	9.0	14.0	22.0		
12	0.888	550	640	1.16	10.0	15.0	22.0		
12	0.887	545	630	1.16	9.0	14.0	22.0		
12	0.885	545	635	1.17	9.5	14.5	22.0		
12	0.889	540	630	1.17	9.0	14.0	22.5		
12	0.887	545	630	1.16	9.0	14.0	22.0		
12	0.886	550	640	1.16	10.0	15.0	22.0		
12	0.885	540	630	1.17	9.0	14.0	22.5		
12	0.884	545	635	1.17	9.5	14.5	22.0		
12	0.888	545	630	1.16	9.0	14.0	22.0		
12	0.887	550	635	1.15	9.5	14.5	22.0		
12	0.886	530	615	1.16	8.5	13.5	23.0		
12	0.885	540	625	1.16	9.0	14.0	22.5		
12	0.884	555	645	1.16	10.0	15.0	21.5		
12	0.886	550	645	1.17	10.0	15.0	22.0		
12	0.882	540	630	1.17	9.0	14.0	22.5		
12	0.884	545	635	1.17	9.5	14.5	22.0		
12	0.885	555	650	1.17	10.0	15.0	21.5		
12	0.886	550	635	1.15	9.5	14.5	22.0		
12	0.887	535	615	1.15	8.5	13.5	22.5		
12	0.884	540	625	1.16	9.0	14.0	22.5		
12	0.886	550	635	1.15	9.5	14.5	22.0		
12	0.889	545	630	1.16	9.0	14.0	22.0		
12	0.887	530	610	1.15	8.5	13.5	23.0		
12	0.886	540	625	1.16	9.0	14.0	22.5		
12	0.884	550	640	1.16	10.0	15.0	22.0		
12	0.889	545	630	1.16	9.0	14.0	22.0		
12	0.888	535	625	1.17	9.0	14.0	22.5		
12	0.887	545	635	1.17	9.5	14.5	22.0		
12	0.885	550	635	1.15	9.5	14.5	22.0		
12	0.886	550	640	1.16	10.0	15.0	22.0		
12	0.886	535	615	1.15	8.5	13.5	22.5		
12	0.887	540	625	1.16	9.0	14.0	22.5		
12	0.889	555	645	1.16	10.0	15.0	21.5		
12	0.884	550	640	1.16	10.0	15.0	22.0		
12	0.886	535	615	1.15	8.5	13.5	22.5		
12	0.887	545	635	1.17	9.5	14.5	22.0		
12	0.889	550	640	1.16	10.0	15.0	22.0		
12	0.888	545	635	1.17	9.5	14.5	22.0		
12	0.888	530	610	1.15	8.5	13.5	23.0		
12	0.886	540	630	1.17	9.0	14.0	22.5		
12	0.887	545	635	1.17	9.5	14.5	22.0		
12	0.889	540	625	1.16	9.0	14.0	22.5		
12	0.888	535	615	1.15	8.5	13.5	22.5		
12	0.885	535	615	1.15	8.5	13.5	22.5		
12	0.887	585	665	1.14	10.5	16.0	18.5		
12	0.887	575	660	1.15	10.5	16.0	19.5		
12	0.886	565	655	1.16	10.0	15.0	20.5		
12	0.884	570	655	1.15	10.0	15.0	20.0		
12	0.885	585	660	1.13	10.5	15.5	19.0		
12	0.886	575	655	1.14	10.0	15.0	19.5		
12	0.887	585	665	1.14	11.0	16.0	19.5		
12	0.884	580	660	1.14	10.5	15.5	19.5		
12	0.886	565	655	1.16	10.0	15.0	20.0		
12	0.884	565	655	1.16	10.0	15.0	20.0		
12	0.889	550	635	1.15	9.0	14.5	21.5		
12	0.890	545	630	1.16	9.0	14.5	22.0		
12	0.897	545	635	1.17	9.0	14.5	22.0		
12	0.896	550	640	1.16	9.5	15.0	21.5		
12	0.894	560	645	1.15	9.5	15.0	20.0		
12	0.892	550	635	1.15	9.0	14.0	21.5		
12	0.890	545	630	1.16	9.0	14.0	22.0		
12	0.892	545	625	1.15	9.0	14.0	22.0		
12	0.893	540	625	1.16	9.0	14.0	22.5		
12	0.894	530	610	1.15	8.5	13.5	23.0		
12	0.893	565	655	1.16	10.0	15.0	20.0		
12	0.893	555	645	1.16	10.0	15.0	21.0		
12	0.890	550	635	1.15	9.0	14.0	21.5		

1.08

0.81

12	0.892	545	625	1.15	8.5	13.5	22.0	1.09	0.79
12	0.891	565	655	1.16	10.0	15.0	20.0		
12	0.890	570	660	1.16	10.5	15.5	19.5		
12	0.893	560	650	1.16	10.0	15.0	20.0		
12	0.892	555	645	1.16	10.0	15.0	21.0		
12	0.888	560	650	1.16	10.0	15.0	20.0		
12	0.889	555	640	1.15	9.5	14.5	21.0		
12	0.892	560	645	1.15	10.0	15.0	20.0		
12	0.893	555	640	1.15	9.5	14.5	21.0		
12	0.887	565	630	1.12	8.5	13.0	21.5		
12	0.886	555	620	1.12	8.5	14.0	23.5		
12	0.892	550	615	1.12	9.0	15.0	21.5		
12	0.890	555	620	1.12	8.0	14.0	22.5		
12	0.887	550	615	1.12	9.5	14.0	23.5		
12	0.886	560	630	1.13	8.0	13.5	21.5		
12	0.892	565	635	1.12	8.0	14.5	21.0		
12	0.890	555	620	1.12	10.0	15.0	21.5		
12	0.889	545	625	1.15	8.0	15.5	20.0		
12	0.887	545	615	1.13	9.0	14.0	23.5		
12	0.894	545	620	1.14	10.0	14.0	21.5		
12	0.893	550	615	1.12	8.0	15.0	21.5		
12	0.880	550	650	1.18	9.0	15.0	21.0		
12	0.889	550	640	1.16	8.5	15.5	23.5		
12	0.889	545	635	1.17	9.5	14.0	21.0		
12	0.892	545	635	1.17	8.0	14.0	21.5		
12	0.880	545	635	1.17	9.0	13.5	23.5		
12	0.889	555	650	1.17	8.0	14.0	22.5		
12	0.889	550	635	1.15	10.0	14.0	22.5		
12	0.887	560	655	1.17	8.0	15.0	22.5		
12	0.875	540	630	1.17	8.0	15.0	23.5		
12	0.886	540	615	1.14	9.0	14.0	22.5		
12	0.890	545	625	1.15	8.0	15.5	21.0		
12	0.887	545	615	1.13	10.0	14.0	22.5		
12	0.878	550	625	1.14	8.0	15.0	21.0		
12	0.884	540	615	1.14	9.5	15.0	22.5		
12	0.891	540	625	1.16	8.0	14.0	22.5		
12	0.886	535	615	1.15	9.5	13.5	22.5		
12	0.878	550	620	1.13	8.0	15.0	23.5		
12	0.883	555	645	1.16	9.0	14.0	23.5		
12	0.882	550	645	1.17	8.5	15.0	23.5		
12	0.884	560	645	1.15	9.5	14.0	22.5		
12	0.879	555	650	1.17	10.0	15.5	22.0		
12	0.885	540	635	1.18	8.0	14.5	21.0		
12	0.888	535	630	1.18	9.5	14.0	22.0		
12	0.889	545	650	1.19	8.0	14.0	23.5		
12	0.884	565	630	1.12	9.0	15.0	21.5		
12	0.886	560	625	1.12	8.5	14.0	22.5		
12	0.880	555	630	1.14	9.0	15.0	23.5		
12	0.881	555	635	1.14	8.0	14.5	21.5		
12	0.884	550	645	1.17	9.0	14.0	21.0		
12	0.885	560	645	1.15	10.0	13.5	23.5		
12	0.889	550	635	1.15	8.0	15.0	21.5		
12	0.886	540	620	1.15	9.5	14.0	21.0		
12	0.880	560	650	1.16	8.0	13.5	22.5		
12	0.884	560	650	1.16	9.5	14.0	23.5		
12	0.882	540	625	1.16	8.0	14.0	21.0		
12	0.885	560	625	1.12	9.5	15.0	20.0		
12	0.886	555	630	1.14	8.0	14.0	21.5		
12	0.889	560	660	1.18	9.5	15.0	22.5		
12	0.891	560	645	1.15	8.0	14.5	21.5		
12	0.894	555	630	1.14	9.5	13.5	22.5		
12	0.879	545	630	1.16	8.0	14.0	22.5		
12	0.890	555	630	1.14	9.5	15.0	21.0		
12	0.894	555	655	1.18	8.0	14.0	22.5		
12	0.891	550	645	1.17	9.0	15.0	21.5		
12	0.879	540	640	1.19	8.0	14.0	22.0		
12	0.881	555	625	1.13	10.0	13.5	22.5		
12	0.886	545	645	1.18	10.0	14.0	22.5		
12	0.889	545	625	1.15	8.0	15.0	21.0		
12	0.889	550	625	1.14	9.5	14.0	21.0		
12	0.885	550	630	1.15	8.0	15.0	22.5		
12	0.887	530	625	1.18	9.5	13.5	22.5		
12	0.886	530	615	1.16	8.0	15.5	20.0		
12	0.884	565	630	1.12	9.5	14.0	20.0		
12	0.890	560	645	1.15	8.0	15.0	21.0		
12	0.891	560	660	1.18	9.0	14.0	23.0		
								0.99	0.80

12	0.896	545	640	1.17	8.0	15.0	21.5		
12	0.887	560	655	1.17	9.0	15.5	21.0		
12	0.883	545	635	1.17	10.0	14.0	21.5		
12	0.884	545	630	1.16	8.0	14.0	21.5		
12	0.882	545	635	1.17	9.5	15.0	21.0		
12	0.889	560	625	1.12	8.0	14.0	22.0		
12	0.886	550	640	1.16	9.5	15.5	21.0		
12	0.887	550	630	1.15	8.0	14.0	21.5		
12	0.884	545	630	1.16	9.0	15.0	22.0		
12	0.890	530	630	1.19	8.0	14.0	20.0		
12	0.891	530	630	1.19	10.0	15.5	21.5		
12	0.896	560	615	1.10	8.0	14.0	21.0		
12	0.894	540	630	1.17	9.5	15.0	21.5		
12	0.897	550	650	1.18	8.0	14.0	21.5		
12	0.883	545	650	1.19	9.5	15.0	22.0		
12	0.880	560	640	1.14	8.0	14.0	20.0		
12	0.884	545	650	1.19	9.5	15.5	20.5		
12	0.885	545	630	1.16	8.0	14.0	21.0		
12	0.886	550	635	1.15	9.5	15.0	20.5		
12	0.881	525	620	1.18	8.0	14.0	22.5		
12	0.889	530	630	1.19	9.5	13.5	22.0		
12	0.881	555	625	1.13	8.0	14.0	20.0		
12	0.889	530	625	1.18	9.5	15.0	21.0		
12	0.896	535	630	1.18	8.0	14.0	23.0		
12	0.892	525	620	1.18	9.5	15.5	21.0		
12	0.894	530	615	1.16	8.0	14.0	20.0		
12	0.893	525	615	1.17	9.0	15.0	20.5		
12	0.890	530	610	1.15	10.0	14.0	23.5		
12	0.882	530	615	1.16	8.0	15.0	20.0		
12	0.881	535	625	1.17	9.0	14.0	21.0		
12	0.885	560	625	1.12	10.0	13.5	21.0		
12	0.884	535	625	1.17	8.0	14.0	21.0		
12	0.887	535	630	1.18	8.0	15.0	21.5		
12	0.880	530	615	1.16	9.0	14.0	22.5		
12	0.887	555	625	1.13	8.5	15.0	22.0		
12	0.896	530	615	1.16	9.0	14.0	23.5		
12	0.897	540	635	1.18	8.0	15.0	21.0		
12	0.895	550	640	1.16	9.5	14.0	21.5		
12	0.882	540	630	1.17	8.0	14.5	20.5		
12	0.886	540	615	1.14	10.0	14.0	21.5		
12	0.880	560	625	1.12	8.0	15.0	21.0		
12	0.881	555	615	1.11	9.5	14.0	23.0		
12	0.889	550	650	1.18	9.0	15.0	21.5		
12	0.891	540	635	1.18	8.0	14.0	23.5		
12	0.893	550	650	1.18	9.0	15.0	21.0		
12	0.884	560	640	1.14	9.0	14.0	21.5		
12	0.884	545	650	1.19	8.0	13.5	21.5		
12	0.887	530	630	1.19	8.0	14.0	20.0		
12	0.886	530	620	1.17	9.0	15.0	21.5		
12	0.883	545	640	1.17	9.5	14.0	21.5		
12	0.882	540	640	1.19	8.5	13.5	23.5		
12	0.884	555	640	1.15	8.0	14.0	21.5		
12	0.884	560	625	1.12	10.0	15.0	21.0		
12	0.885	560	635	1.13	8.0	14.0	22.0		
12	0.889	540	635	1.18	9.0	15.0	22.0		
12	0.891	545	630	1.16	8.0	15.5	21.0		
12	0.894	560	625	1.12	10.0	14.0	22.0		
12	0.893	545	625	1.15	8.5	13.5	20.5		
12	0.885	530	635	1.20	9.0	14.5	21.5		
12	0.889	545	650	1.19	9.5	15.0	22.0		
12	0.891	545	645	1.18	10.0	16.0	22.5		
12	0.894	565	660	1.17	8.0	13.5	20.0		
12	0.889	560	660	1.18	8.5	14.0	21.0		
12	0.895	555	660	1.19	9.0	14.5	21.5		
12	0.893	530	635	1.20	8.5	13.5	21.0		
12	0.896	565	660	1.17	8.0	13.0	20.5		
12	0.891	535	645	1.21	9.5	15.0	22.0		
12	0.896	550	660	1.20	8.5	14.0	21.0		
12	0.894	560	665	1.19	8.0	13.5	20.5		
12	0.892	565	650	1.15	9.0	14.0	21.0		
12	0.888	555	655	1.18	9.0	14.5	21.5		
12	0.893	540	635	1.18	9.5	15.0	22.0		
12	0.891	560	655	1.17	8.5	14.0	21.0		
12	0.895	555	655	1.18	8.5	13.5	21.0		
12	0.890	565	655	1.16	8.0	13.0	20.5		
12	0.892	555	650	1.17	9.0	14.5	21.5		

1.10

0.68

0.85

0.70

12	0.890	560	655	1.17	8.5	13.5	20.5	0.95	0.85
12	0.897	540	655	1.21	10.0	15.5	22.5		
12	0.894	565	660	1.17	8.0	13.0	20.0		
12	0.895	540	650	1.20	9.0	14.5	21.5		
12	0.892	535	640	1.20	10.0	15.5	22.5		
12	0.890	555	665	1.20	8.5	14.0	21.0		
12	0.883	565	655	1.16	8.0	13.5	20.5		
12	0.886	545	650	1.19	9.0	14.5	21.5		
12	0.884	545	650	1.19	10.0	15.5	22.5		
12	0.894	560	650	1.16	8.5	14.0	21.0		
12	0.887	565	655	1.16	8.0	13.0	20.0		
12	0.890	560	655	1.17	8.5	14.0	21.0		
12	0.888	555	650	1.17	9.0	14.5	21.5		
12	0.895	545	655	1.20	9.5	15.0	22.0		
12	0.897	565	660	1.17	8.0	13.5	20.0		
12	0.894	545	645	1.18	10.0	16.0	23.0		
12	0.896	550	660	1.20	9.5	14.5	22.0		
12	0.896	555	665	1.20	8.5	14.0	21.0		
12	0.892	560	660	1.18	8.5	13.5	21.0		
12	0.893	530	630	1.19	9.0	14.5	21.5		
12	0.890	535	625	1.17	10.0	16.0	22.5		
12	0.896	545	640	1.17	9.5	15.5	22.5		
12	0.895	540	630	1.17	9.0	15.0	22.0		
12	0.894	525	610	1.16	8.0	13.0	20.0		
12	0.893	530	625	1.18	8.5	14.0	21.0		
12	0.899	555	650	1.17	9.0	14.5	21.5		
12	0.900	530	620	1.17	8.5	14.0	21.0		
12	0.897	525	605	1.15	8.0	13.0	20.0		
12	0.898	525	615	1.17	8.0	13.5	20.5		
12	0.889	530	605	1.14	8.5	14.0	21.0		
12	0.894	520	600	1.15	8.0	13.5	20.0		
12	0.895	530	610	1.15	9.0	14.0	21.0		
12	0.893	535	610	1.14	8.5	14.0	21.0		
12	0.892	560	650	1.16	9.0	14.5	21.0		
12	0.896	535	615	1.15	9.0	13.5	21.5		
12	0.897	535	625	1.17	9.5	15.0	22.0		
12	0.895	530	615	1.16	9.0	14.5	21.5		
12	0.895	555	655	1.18	9.0	15.0	21.5		
12	0.899	530	615	1.16	8.5	14.0	21.0		
12	0.896	540	635	1.18	8.5	13.5	21.5		
12	0.897	530	610	1.15	8.0	13.0	20.0		
12	0.891	560	655	1.17	9.0	14.5	21.5		
12	0.895	545	635	1.17	9.0	15.0	21.5		
12	0.894	545	630	1.16	8.5	14.0	21.0		
12	0.892	560	665	1.19	9.0	14.5	21.5		
12	0.895	535	625	1.17	8.5	13.5	21.0		
12	0.897	550	640	1.16	9.0	14.0	21.0		
12	0.895	545	630	1.16	8.5	13.5	21.0		
12	0.896	530	630	1.19	8.0	13.0	20.0		
12	0.888	560	650	1.16	9.0	14.5	21.5		
12	0.890	540	615	1.14	8.5	14.0	21.0		
12	0.891	550	630	1.15	9.0	13.5	21.0		
12	0.892	545	630	1.16	9.0	14.0	21.0		
12	0.889	560	650	1.16	8.5	13.5	21.0		
12	0.893	545	640	1.17	9.0	14.0	21.0		
12	0.892	545	625	1.15	9.0	14.5	21.5		
12	0.890	550	625	1.14	8.0	13.0	20.0		
12	0.892	555	655	1.18	8.0	13.5	20.5		
12	0.894	535	630	1.18	9.5	15.0	22.0		
12	0.896	530	615	1.16	8.5	13.5	20.5		
12	0.895	535	625	1.17	9.0	14.5	21.5		
12	0.892	560	655	1.17	8.5	14.0	21.0		
12	0.894	545	635	1.17	9.5	15.0	22.0		
12	0.897	535	620	1.16	8.5	13.5	21.0		
12	0.896	545	630	1.16	10.0	15.5	22.5		
12	0.893	560	650	1.16	8.5	14.0	21.0		
12	0.895	535	620	1.16	8.5	13.5	21.0		
12	0.894	530	605	1.14	8.5	14.0	21.0		
12	0.892	530	605	1.14	8.0	13.5	20.5		
12	0.897	555	645	1.16	9.5	15.0	22.0		
12	0.896	555	645	1.16	10.0	16.0	22.5		
12	0.893	550	640	1.16	8.5	13.5	21.0		
12	0.892	540	620	1.15	10.0	16.5	23.5		
12	0.891	540	625	1.16	9.0	14.5	21.5		
12	0.895	555	640	1.15	10.5	16.5	23.5		
12	0.894	555	640	1.15	9.0	14.5	21.5		

12	0.896	545	625	1.15	10.0	15.5	22.5	0.98	0.85
12	0.892	545	640	1.17	9.5	15.0	22.0		
12	0.890	550	645	1.17	10.0	16.5	23.5		
12	0.889	555	655	1.18	8.5	14.0	21.0		
12	0.897	555	645	1.16	8.5	13.5	21.0		
12	0.896	545	640	1.17	9.5	15.0	22.0		
12	0.895	550	630	1.15	10.0	16.5	23.5		
12	0.887	555	650	1.17	8.5	14.0	21.0		
12	0.889	555	655	1.18	8.5	13.5	21.0		
12	0.890	540	630	1.17	10.0	15.5	22.5		
12	0.888	555	650	1.17	9.0	14.5	21.5		
12	0.897	555	645	1.16	9.0	15.0	21.5		
12	0.896	535	620	1.16	10.0	16.0	22.5		
12	0.892	545	640	1.17	9.0	14.5	21.5		
12	0.891	545	645	1.18	10.5	16.0	23.5		
12	0.895	550	650	1.18	9.0	14.5	21.5		
12	0.895	555	655	1.18	9.0	15.0	21.5		
12	0.896	535	630	1.18	9.5	15.5	22.0		
12	0.893	555	645	1.16	9.0	16.0	22.5		
12	0.892	545	640	1.17	8.0	13.0	20.0		
12	0.898	540	630	1.17	9.0	14.5	21.5		
12	0.897	540	630	1.17	10.0	15.5	22.5		
12	0.896	540	640	1.19	10.0	16.5	23.5		
12	0.895	550	650	1.18	9.0	14.5	21.5		
12	0.894	555	645	1.16	8.5	13.5	20.0		
12	0.895	560	650	1.16	8.5	13.5	21.0		
12	0.897	555	645	1.16	9.0	14.5	21.5		
12	0.894	540	620	1.15	8.5	14.0	21.0		
12	0.892	560	640	1.14	9.5	15.0	22.0		
12	0.898	530	620	1.17	9.5	15.5	22.0		
12	0.897	530	610	1.15	8.0	13.5	20.5		
12	0.896	540	635	1.18	10.0	16.0	22.5		
12	0.895	560	655	1.17	8.5	14.0	21.0		
12	0.891	560	645	1.15	8.5	13.5	21.0		
12	0.895	565	650	1.15	8.0	13.0	20.5		
12	0.892	555	640	1.15	9.5	15.5	22.0		
12	0.893	535	615	1.15	9.0	14.5	21.5		
12	0.894	560	650	1.16	8.5	13.5	20.5		
12	0.896	555	655	1.18	8.5	14.0	21.0		
12	0.895	540	640	1.19	9.5	15.0	22.0		
12	0.893	540	640	1.19	10.0	15.5	22.5		
12	0.897	565	655	1.16	8.5	14.0	21.0		
12	0.896	550	645	1.17	9.0	14.5	21.5		
12	0.895	535	630	1.18	10.0	16.0	22.5		
12	0.893	560	650	1.16	8.5	13.5	21.0		
12	0.887	535	610	1.14	8.5	14.0	21.0		
12	0.889	545	630	1.16	9.5	15.0	22.0		
12	0.893	545	640	1.17	9.0	14.5	21.5		
12	0.890	540	635	1.18	10.0	16.0	22.5		
12	0.905	540	630	1.17	10.0	15.5	22.5		
12	0.899	550	645	1.17	8.5	14.0	21.0		
12	0.898	555	655	1.18	8.5	13.5	21.0		
12	0.899	540	630	1.17	9.5	15.0	22.0		
12	0.890	530	620	1.17	8.0	13.5	20.5		
12	0.893	560	655	1.17	8.5	14.0	21.0		
12	0.891	540	635	1.18	9.0	14.5	21.5		
12	0.892	545	655	1.20	9.5	15.0	22.0		
12	0.895	550	635	1.15	9.0	15.0	21.0		
12	0.892	555	640	1.15	9.5	15.5	21.5		
12	0.891	550	630	1.15	9.0	15.0	21.0		
12	0.890	550	635	1.15	9.0	15.0	21.0		
12	0.897	545	625	1.15	9.5	15.5	21.5		
12	0.895	560	640	1.14	9.5	15.5	21.5		
12	0.893	555	640	1.15	8.5	14.5	21.0		
12	0.894	555	635	1.14	9.5	15.5	21.5		
12	0.898	550	630	1.15	9.0	15.0	21.0		
12	0.895	550	630	1.15	9.0	15.0	21.5		
12	0.898	555	640	1.15	10.5	16.5	22.5		
12	0.896	560	645	1.15	9.0	15.0	21.5		
12	0.896	555	640	1.15	9.5	15.5	22.5		
12	0.893	550	635	1.15	10.5	16.0	22.5		
12	0.894	550	635	1.15	9.0	15.0	21.5		
12	0.893	550	635	1.15	9.0	15.0	21.0		
12	0.897	560	655	1.17	9.5	15.5	21.5		
12	0.894	550	635	1.15	10.5	16.5	22.5		
12	0.896	560	650	1.16	10.5	16.5	22.5		

12	0.894	555	640	1.15	10.0	15.5	21.5		
12	0.890	540	620	1.15	9.5	15.0	21.0		
12	0.899	545	630	1.16	9.5	15.5	21.5		
12	0.895	545	630	1.16	9.5	15.5	21.0		
12	0.896	545	625	1.15	9.0	15.0	21.0		
12	0.894	525	615	1.17	9.0	15.0	21.0		
12	0.896	540	625	1.16	9.0	15.0	21.0		
12	0.893	540	625	1.16	9.5	15.5	21.5		
12	0.895	540	620	1.15	9.0	15.0	21.0		
12	0.893	555	645	1.16	10.0	16.0	22.5		
12	0.895	555	640	1.15	9.5	16.0	22.5		
12	0.892	555	645	1.16	10.0	16.5	22.5		
12	0.891	550	630	1.15	9.5	15.5	21.0		
12	0.891	560	655	1.17	9.5	16.0	21.5		
12	0.893	540	625	1.16	9.5	15.0	21.0		
12	0.890	540	630	1.17	9.0	15.0	21.0		
12	0.892	545	630	1.16	9.5	15.0	21.0		
12	0.895	560	655	1.17	10.0	15.0	22.5		
12	0.897	545	625	1.15	8.0	14.0	21.0		
12	0.892	560	640	1.14	9.5	13.5	22.0		
12	0.894	555	635	1.14	8.0	14.0	22.5		
12	0.892	555	655	1.18	8.0	13.5	22.5		
12	0.895	560	645	1.15	9.0	15.0	21.5		
12	0.891	560	630	1.13	10.0	15.0	21.5		
12	0.890	550	635	1.15	10.0	14.0	22.0		
12	0.893	555	625	1.13	8.0	13.5	21.0		
12	0.894	545	640	1.17	9.5	14.0	22.0		
12	0.890	550	645	1.17	8.0	15.0	21.5		
12	0.889	560	630	1.13	9.0	14.0	21.5		
12	0.870	550	620	1.13	8.0	13.5	21.0		
12	0.873	540	640	1.19	9.0	14.0	21.0		
12	0.880	560	645	1.15	8.5	15.0	21.5		
12	0.881	560	640	1.14	9.0	14.0	22.0		
12	0.873	555	620	1.12	8.0	13.5	22.5		
12	0.877	530	625	1.18	9.5	14.0	22.0		
12	0.887	565	630	1.12	8.0	15.0	22.5		
12	0.885	540	620	1.15	9.5	14.0	22.0		
12	0.876	560	650	1.16	8.0	15.5	22.5		
12	0.882	560	635	1.13	9.0	14.0	21.5		
12	0.893	550	635	1.15	8.5	15.5	22.0		
12	0.896	550	615	1.12	8.5	14.0	21.0		
12	0.875	535	625	1.17	9.5	15.5	21.0		
12	0.887	530	630	1.19	8.0	14.0	21.0		
12	0.898	550	620	1.13	9.0	13.5	22.5		
12	0.899	550	630	1.15	10.0	14.0	22.5		
12	0.879	560	630	1.13	8.0	15.0	21.0		
12	0.891	540	625	1.16	9.0	14.0	21.5		
12	0.896	560	645	1.15	10.0	15.5	22.0		
12	0.895	555	640	1.15	8.0	14.0	21.0		
12	0.880	550	630	1.15	9.0	15.0	21.0		
12	0.891	545	625	1.15	10.0	14.0	21.0		
12	0.890	555	630	1.14	8.0	15.0	21.5		
12	0.889	550	625	1.14	9.5	15.0	21.0		
12	0.883	540	625	1.16	8.0	14.0	21.0		
12	0.895	550	620	1.13	9.5	14.5	21.5		
12	0.893	545	625	1.15	8.0	14.0	22.0		
12	0.892	550	625	1.14	9.5	15.5	21.0		
12	0.891	550	630	1.15	8.0	14.0	21.0		
12	0.893	555	625	1.13	9.5	14.0	22.0		
12	0.891	555	630	1.14	8.0	15.0	21.0		
12	0.893	550	630	1.15	9.5	14.0	22.0		
12	0.892	550	630	1.15	8.0	15.5	21.5		
12	0.895	540	620	1.15	9.5	14.0	22.0		
12	0.894	540	620	1.15	8.0	13.5	21.0		
12	0.891	550	630	1.15	9.0	14.0	21.0		
12	0.890	545	630	1.16	10.0	14.0	22.0		
12	0.893	540	620	1.15	10.0	15.0	21.0		
12	0.892	545	630	1.16	8.0	14.0	22.5		
12	0.892	550	630	1.15	9.5	13.5	21.0		
12	0.894	540	625	1.16	8.0	14.0	21.0		
12	0.896	550	630	1.15	9.5	15.0	20.5		
12	0.894	545	620	1.14	8.0	15.0	20.0		
12	0.891	550	630	1.15	9.5	14.0	20.0		
12	0.892	530	615	1.16	8.0	13.5	20.5		
12	0.891	535	625	1.17	9.5	14.0	21.0		
12	0.889	550	620	1.13	8.0	15.0	21.0		

1.01

0.76

1.01

0.76

12	0.890	545	630	1.16	9.0	14.0	21.5
12	0.896	565	650	1.15	8.0	13.5	20.0
12	0.890	555	645	1.16	9.5	14.0	21.5
12	0.886	560	650	1.16	8.0	14.0	20.0
12	0.893	555	655	1.18	8.0	14.5	23.0
12	0.896	545	640	1.17	9.0	13.5	21.0
12	0.888	555	650	1.17	8.0	12.5	21.0
12	0.886	555	650	1.17	8.5	14.0	21.5
12	0.889	540	640	1.19	8.0	12.5	21.5
12	0.892	555	645	1.16	9.5	13.0	22.5
12	0.885	545	650	1.19	8.0	14.0	22.5
12	0.880	560	665	1.19	8.0	13.5	21.0
12	0.886	560	650	1.16	9.0	14.0	22.5
12	0.889	560	660	1.18	8.0	14.5	21.5
12	0.882	550	650	1.18	8.5	12.5	22.5
12	0.891	550	650	1.18	7.5	13.0	23.0
12	0.894	550	655	1.19	7.5	13.5	22.5
12	0.891	555	645	1.16	8.0	14.0	22.0
12	0.880	545	640	1.17	8.0	14.0	21.5
12	0.879	540	630	1.17	9.5	13.5	21.5
12	0.890	550	640	1.16	8.0	13.0	22.5
12	0.885	545	645	1.18	7.5	12.5	21.0
12	0.889	560	630	1.13	8.0	14.0	22.5
12	0.896	545	630	1.16	8.0	14.0	22.5
12	0.897	540	645	1.19	9.0	13.5	22.5
12	0.886	555	645	1.16	8.5	14.5	22.5
12	0.883	550	635	1.15	7.5	13.5	21.0
12	0.895	550	635	1.15	8.0	14.0	22.5
12	0.880	545	625	1.15	9.5	14.0	23.5
12	0.884	540	635	1.18	8.0	13.5	22.0
12	0.877	555	620	1.12	9.5	14.0	23.5
12	0.874	545	640	1.17	7.5	12.5	22.0
12	0.880	560	625	1.12	8.0	13.0	21.0
12	0.881	545	645	1.18	9.0	14.0	22.0
12	0.881	550	625	1.14	8.0	14.0	21.5
12	0.882	555	635	1.14	8.0	13.5	22.5
12	0.886	540	640	1.19	7.5	13.0	22.5
12	0.883	560	645	1.15	8.5	13.0	21.0
12	0.885	555	625	1.13	8.0	14.0	19.5
12	0.883	560	650	1.16	9.5	12.5	20.0
12	0.881	525	625	1.19	8.0	13.0	23.5
12	0.886	555	625	1.13	9.0	14.0	23.0
12	0.884	545	640	1.17	7.5	14.5	22.5
12	0.882	530	630	1.19	8.0	14.0	22.5
12	0.886	555	635	1.14	7.5	13.0	21.5
12	0.883	560	655	1.17	8.0	12.5	22.5
12	0.882	550	640	1.16	8.0	12.5	23.5
12	0.881	560	650	1.16	9.0	13.0	20.0
12	0.889	560	650	1.16	8.5	13.0	23.5
12	0.887	550	655	1.19	8.0	14.0	22.5
12	0.880	560	650	1.16	8.5	13.5	22.5
12	0.879	555	655	1.18	9.0	14.0	23.5
12	0.880	540	645	1.19	7.5	14.0	22.5
12	0.881	560	640	1.14	7.5	12.5	22.5
12	0.883	540	640	1.19	8.0	13.0	21.5
12	0.886	540	640	1.19	9.5	14.0	23.5
12	0.884	545	625	1.15	8.0	13.5	21.0
12	0.886	555	640	1.15	9.5	14.0	23.5
12	0.884	540	630	1.17	8.0	14.0	22.0
12	0.879	540	625	1.16	9.5	13.5	22.5
12	0.882	560	635	1.13	8.0	12.5	23.5
12	0.883	555	615	1.11	9.0	13.0	21.5
12	0.884	550	625	1.14	7.5	14.0	23.5
12	0.887	540	635	1.18	8.5	14.0	21.0
12	0.886	550	650	1.18	8.0	13.5	21.5
12	0.881	560	650	1.16	9.5	14.0	21.5
12	0.883	545	635	1.17	8.0	14.0	23.5
12	0.887	525	625	1.19	9.0	13.5	22.5
12	0.880	530	615	1.16	8.0	14.0	23.0
12	0.881	555	640	1.15	9.5	14.5	23.0
12	0.882	540	645	1.19	7.5	13.5	22.5
12	0.883	555	655	1.18	8.0	14.0	21.5
12	0.884	545	625	1.15	9.0	13.5	22.5
12	0.889	540	625	1.16	8.5	14.0	22.5
12	0.886	550	640	1.16	9.0	13.5	21.5
12	0.883	545	650	1.19	8.5	13.0	21.5

1.04

0.81

0.99

0.85

12	0.880	545	635	1.17	9.0	14.0	21.5	1.02	0.85
12	0.884	540	640	1.19	7.5	12.5	20.0		
12	0.889	540	625	1.16	7.5	14.0	21.5		
12	0.891	550	620	1.13	8.0	13.5	22.0		
12	0.892	540	625	1.16	9.0	14.0	21.5		
12	0.889	555	645	1.16	9.5	15.0	22.0		
12	0.885	555	645	1.16	10.0	15.5	22.5		
12	0.891	550	640	1.16	8.5	14.0	21.0		
12	0.890	540	620	1.15	10.0	16.5	23.5		
12	0.894	540	625	1.16	9.0	14.5	21.5		
12	0.899	555	640	1.15	10.5	16.5	23.5		
12	0.895	555	640	1.15	9.0	14.5	21.5		
12	0.897	545	625	1.15	9.5	15.5	22.5		
12	0.888	545	640	1.17	9.0	15.0	22.0		
12	0.894	550	645	1.17	10.0	16.0	23.5		
12	0.892	555	655	1.18	8.5	14.0	21.0		
12	0.892	555	645	1.16	8.5	13.5	21.0		
12	0.890	545	640	1.17	9.5	14.5	22.0		
12	0.896	550	630	1.15	10.0	16.5	23.5		
12	0.895	555	650	1.17	8.5	14.0	21.0		
12	0.893	555	655	1.18	8.5	13.5	21.0		
12	0.889	540	630	1.17	10.0	15.5	22.5		
12	0.893	555	650	1.17	9.0	14.5	21.5		
12	0.894	555	645	1.16	9.0	15.0	21.5		
12	0.892	535	620	1.16	10.0	16.0	22.5		
12	0.897	545	640	1.17	9.0	14.5	21.5		
12	0.899	545	645	1.18	10.5	16.5	23.5		
12	0.901	550	650	1.18	9.0	14.5	21.5		
12	0.900	555	655	1.18	9.0	14.0	21.5		
12	0.890	535	630	1.18	9.5	15.0	22.0		
12	0.896	555	645	1.16	10.0	15.5	22.5		
12	0.897	545	640	1.17	8.0	13.5	20.0		
12	0.897	540	630	1.17	9.0	14.0	21.5		
12	0.888	540	630	1.17	10.0	16.0	22.5		
12	0.894	540	640	1.19	10.5	16.5	23.5		
12	0.895	550	650	1.18	9.0	14.5	21.5		
12	0.893	555	645	1.16	8.5	13.5	20.0		
12	0.891	555	640	1.15	9.0	15.0	22.0		
12	0.897	540	630	1.17	9.5	16.0	22.5		
12	0.901	540	630	1.17	10.0	16.5	23.5		
12	0.898	560	650	1.16	9.0	14.5	21.5		
12	0.890	555	650	1.17	10.0	15.5	22.5		
12	0.894	550	640	1.16	8.5	13.5	21.0		
12	0.896	540	640	1.19	9.0	14.5	21.5		
12	0.894	550	635	1.15	9.0	14.0	21.5		
12	0.895	560	660	1.18	9.0	15.0	21.5		
12	0.898	545	645	1.18	9.0	14.5	21.5		
12	0.897	525	620	1.18	10.5	16.5	23.5		
12	0.896	530	630	1.19	9.0	14.0	21.5		
12	0.889	545	645	1.18	8.5	13.5	21.0		
12	0.892	535	635	1.19	8.5	14.0	21.0		
12	0.890	545	640	1.17	9.5	15.0	22.0		
12	0.891	540	640	1.19	10.0	16.0	22.5		
12	0.889	535	625	1.17	9.5	14.5	22.0		
12	0.895	535	625	1.17	9.0	15.0	21.5		
12	0.896	545	625	1.15	10.0	16.0	22.5		
12	0.894	530	605	1.14	8.0	13.5	20.5		
12	0.897	540	645	1.19	9.0	15.0	22.0		
12	0.896	560	665	1.19	8.5	14.0	21.0		
12	0.897	555	665	1.20	8.5	13.0	20.5		
12	0.895	540	645	1.19	10.0	15.5	22.5		
12	0.893	530	615	1.16	8.5	13.5	21.0		
12	0.894	545	635	1.17	10.0	16.0	22.5		
12	0.895	550	640	1.16	9.0	14.5	21.5		
12	0.896	530	615	1.16	8.0	13.0	20.5		
12	0.889	530	625	1.18	9.0	15.0	22.0		
12	0.892	535	630	1.18	9.5	16.0	22.5		
12	0.890	535	625	1.17	9.0	14.5	21.5		
12	0.889	540	645	1.19	10.0	16.0	23.0		
12	0.887	555	650	1.17	9.0	14.5	21.5		
12	0.893	550	655	1.19	10.0	16.0	23.0		
12	0.895	540	645	1.19	9.5	15.5	22.5		
12	0.896	540	630	1.17	9.0	15.0	22.0		
12	0.894	545	640	1.17	10.0	16.5	23.0		
12	0.896	555	650	1.17	9.0	14.5	21.5		
12	0.897	560	660	1.18	8.5	15.0	21.0		

12	0.886	540	620	1.15	8.0	13.5	20.5	0.95	0.81
12	0.884	550	640	1.16	9.0	15.0	21.5		
12	0.882	555	640	1.15	8.5	14.5	21.5		
12	0.884	550	625	1.14	8.0	14.0	21.0		
12	0.886	530	615	1.16	8.0	14.0	20.5		
12	0.882	545	625	1.15	8.5	14.5	21.0		
12	0.885	545	625	1.15	8.5	14.5	21.0		
12	0.888	550	635	1.15	9.0	15.0	21.5		
12	0.886	535	620	1.16	9.0	15.5	22.0		
12	0.885	545	625	1.15	9.5	16.0	22.5		
12	0.888	560	645	1.15	9.0	15.0	21.5		
12	0.886	540	625	1.16	8.0	14.0	21.0		
12	0.884	545	635	1.17	8.5	14.5	21.5		
12	0.888	550	635	1.15	9.0	15.5	22.0		
12	0.889	555	640	1.15	8.0	14.0	21.0		
12	0.885	545	630	1.16	9.5	16.0	22.0		
12	0.881	545	625	1.15	9.5	16.5	22.5		
12	0.884	545	625	1.15	8.5	14.5	21.5		
12	0.882	555	640	1.15	9.0	15.0	21.5		
12	0.884	560	640	1.14	9.0	15.0	21.5		
12	0.887	540	625	1.16	9.0	15.0	21.5		
12	0.885	550	640	1.16	9.5	16.0	22.5		
12	0.883	545	625	1.15	8.5	14.5	21.0		
12	0.887	560	645	1.15	9.0	15.0	21.5		
12	0.889	545	625	1.15	8.5	14.5	21.0		
12	0.889	555	635	1.14	9.0	15.0	21.5		
12	0.888	565	655	1.16	9.5	16.0	22.5		
12	0.886	555	635	1.14	9.0	15.0	21.5		
12	0.884	530	615	1.16	8.5	14.0	20.5		
12	0.891	550	635	1.15	8.0	14.5	21.5		
12	0.890	545	625	1.15	8.5	15.0	21.5		
12	0.888	535	620	1.16	8.0	13.0	20.0		
12	0.892	555	635	1.14	8.0	14.0	21.0		
12	0.887	535	625	1.17	8.5	14.5	21.0		
12	0.888	540	630	1.17	8.5	14.5	21.0		
12	0.890	530	620	1.17	8.0	14.0	20.0		
12	0.885	555	640	1.15	8.5	14.5	21.0		
12	0.890	550	635	1.15	8.0	13.5	21.0		
12	0.886	545	645	1.18	9.5	15.0	21.5		
12	0.893	560	645	1.15	8.0	14.0	23.5		
12	0.889	550	655	1.19	9.5	15.0	21.5		
12	0.890	540	625	1.16	8.0	16.0	21.5		
12	0.892	555	655	1.18	9.5	15.5	22.5		
12	0.897	555	645	1.16	8.0	14.0	21.5		
12	0.898	540	630	1.17	9.5	13.5	23.5		
12	0.892	545	640	1.17	8.0	14.0	21.0		
12	0.893	550	640	1.16	9.5	15.0	22.5		
12	0.896	560	650	1.16	8.0	14.0	22.5		
12	0.897	565	665	1.18	8.5	13.5	22.5		
12	0.877	560	650	1.16	8.0	14.0	23.5		
12	0.881	555	660	1.19	9.5	15.5	21.5		
12	0.886	560	645	1.15	8.5	14.0	22.5		
12	0.884	540	635	1.18	8.5	15.0	22.5		
12	0.878	560	635	1.13	9.5	14.0	22.5		
12	0.884	560	640	1.14	8.0	13.5	23.0		
12	0.890	550	630	1.15	9.0	14.0	21.0		
12	0.886	540	630	1.17	8.5	15.0	23.0		
12	0.879	550	640	1.16	9.5	15.5	22.5		
12	0.886	560	655	1.17	9.0	14.0	21.0		
12	0.889	535	630	1.18	8.0	15.5	23.0		
12	0.887	545	645	1.18	9.0	14.0	23.5		
12	0.880	545	625	1.15	9.5	14.0	21.5		
12	0.884	555	630	1.14	8.5	15.5	22.5		
12	0.886	540	635	1.18	8.0	14.0	22.5		
12	0.889	560	650	1.16	9.5	15.5	21.0		
12	0.882	550	640	1.16	8.0	14.0	21.5		
12	0.883	560	660	1.18	8.5	14.0	22.5		
12	0.881	555	650	1.17	9.0	15.5	22.5		
12	0.880	550	645	1.17	9.5	14.0	22.0		
12	0.882	560	650	1.16	8.0	15.0	22.5		
12	0.886	560	630	1.13	9.0	15.5	20.0		
12	0.889	555	645	1.16	8.5	14.0	21.5		
12	0.881	555	650	1.17	9.5	15.0	23.5		
12	0.883	550	650	1.18	8.0	14.0	21.5		
12	0.886	550	645	1.17	9.5	13.5	22.5		
12	0.890	560	650	1.16	8.0	14.0	23.5		

0.95

0.81

0.98

0.65

12	0.891	560	635	1.13	9.5	15.0	22.5
12	0.880	540	645	1.19	9.5	15.5	22.5
12	0.882	560	635	1.13	8.5	16.0	22.5
12	0.886	550	650	1.18	8.0	14.0	23.5
12	0.883	555	645	1.16	8.0	15.0	21.5
12	0.880	560	640	1.14	9.0	14.0	22.5
12	0.890	530	630	1.19	9.5	15.5	21.0
12	0.891	530	625	1.18	8.0	16.0	22.5
12	0.894	545	615	1.13	9.5	14.0	22.5
12	0.882	545	635	1.17	8.0	15.5	23.5
12	0.886	560	640	1.14	9.0	14.0	22.5
12	0.889	540	640	1.19	8.5	15.0	22.5
12	0.883	560	630	1.13	9.0	14.0	22.5
12	0.890	560	650	1.16	8.5	15.5	21.0
12	0.894	545	625	1.15	9.0	14.0	21.5
12	0.884	555	625	1.13	8.5	15.5	22.5
12	0.886	560	660	1.18	8.0	14.0	23.5
12	0.884	555	645	1.16	9.0	15.0	23.5
12	0.886	555	650	1.17	8.5	14.0	22.5
12	0.883	550	650	1.18	9.5	15.5	22.0
12	0.882	560	660	1.18	8.0	14.0	21.5
12	0.889	555	655	1.18	9.5	15.5	20.0
12	0.881	560	650	1.16	8.0	14.0	21.5
12	0.890	560	650	1.16	9.5	15.5	22.5
12	0.893	550	650	1.18	8.0	14.0	23.5
12	0.880	555	640	1.15	9.5	15.5	21.0
12	0.884	555	645	1.16	8.0	14.0	22.5
12	0.889	550	625	1.14	8.5	15.5	21.0
12	0.886	545	645	1.18	9.0	15.0	23.5
12	0.889	550	635	1.15	8.5	14.0	22.5
12	0.890	560	635	1.13	9.5	13.5	21.5
12	0.896	555	635	1.14	8.0	13.5	23.5
12	0.894	545	630	1.16	9.5	14.0	22.5
12	0.881	540	620	1.15	9.0	15.0	21.0
12	0.886	555	615	1.11	8.0	14.0	22.5
12	0.889	545	645	1.18	9.5	15.5	22.5
12	0.897	560	635	1.13	8.5	14.0	23.5
12	0.883	550	650	1.18	9.5	15.0	22.5
12	0.883	555	635	1.14	8.0	14.0	22.5
12	0.886	550	615	1.12	9.0	14.0	21.0
12	0.884	550	625	1.14	9.5	15.5	22.5
12	0.885	555	625	1.13	8.0	15.0	22.5
12	0.890	560	630	1.13	9.5	14.0	21.0
12	0.896	555	620	1.12	8.0	14.0	21.5
12	0.882	555	620	1.12	9.5	13.5	23.5
12	0.881	545	635	1.17	8.0	15.0	21.5
12	0.882	550	625	1.14	9.0	14.5	22.5
12	0.888	555	635	1.14	8.5	14.5	21.5
12	0.884	560	660	1.18	9.5	14.0	22.5
12	0.882	550	640	1.16	8.0	15.0	22.5
12	0.885	550	635	1.15	9.5	15.5	21.5
12	0.886	545	635	1.17	8.0	14.5	21.0
12	0.883	545	635	1.17	9.5	13.5	21.5
12	0.884	550	650	1.18	8.0	14.0	22.5
12	0.886	555	635	1.14	9.5	14.5	22.5
12	0.882	550	655	1.19	8.0	13.5	22.0
12	0.886	560	640	1.14	9.5	14.0	21.5
12	0.884	555	625	1.13	8.0	15.0	21.5
12	0.889	550	635	1.15	9.0	14.0	22.5
12	0.890	555	630	1.14	8.0	15.5	22.5
12	0.891	540	630	1.17	9.5	14.0	21.0
12	0.888	530	625	1.18	8.0	13.5	23.5
12	0.889	560	650	1.16	9.5	14.0	23.5
12	0.890	525	615	1.17	8.0	13.5	23.0
12	0.894	560	635	1.13	9.5	14.0	22.0
12	0.884	545	650	1.19	8.0	13.5	22.5
12	0.886	530	630	1.19	9.5	14.0	22.5
12	0.889	555	635	1.14	8.0	13.5	21.5
12	0.892	550	650	1.18	9.0	14.0	22.5
12	0.886	550	650	1.18	9.0	13.5	23.5
12	0.884	560	650	1.16	8.0	14.0	20.0
12	0.883	560	640	1.14	9.0	15.0	23.0
12	0.889	545	635	1.17	9.5	14.0	22.5
12	0.886	540	625	1.16	9.5	13.5	23.5
12	0.895	540	615	1.14	8.0	14.0	22.5
12	0.884	555	645	1.16	9.0	13.5	22.5

0.88

0.70

0.95

0.62

12	0.886	555	650	1.17	8.5	14.0	22.5	0.95	0.62
12	0.886	550	645	1.17	9.0	15.0	23.5		
12	0.889	545	630	1.16	8.0	14.0	21.5		
12	0.889	560	650	1.16	9.5	13.5	22.5		
12	0.891	560	660	1.18	8.0	14.0	21.5		
12	0.884	540	625	1.16	9.0	14.0	22.5		
12	0.884	540	620	1.15	8.5	13.5	22.5		
12	0.887	555	645	1.16	10.0	15.0	21.0		
12	0.886	545	635	1.17	9.5	14.5	22.0		
12	0.883	550	640	1.16	10.0	15.0	21.5		
12	0.886	550	635	1.15	9.5	14.5	21.5		
12	0.888	535	615	1.15	8.5	13.5	22.5		
12	0.885	545	630	1.16	9.0	14.0	22.0		
12	0.885	550	640	1.16	10.0	15.0	21.5		
12	0.889	555	645	1.16	10.0	15.0	21.0		
12	0.891	550	635	1.15	9.5	14.5	21.5		
12	0.888	550	635	1.15	9.5	14.5	21.5		
12	0.887	540	625	1.16	9.0	14.0	22.5		
12	0.886	540	625	1.16	9.0	14.0	22.5		
12	0.883	540	625	1.16	9.0	14.0	22.5		
12	0.881	550	640	1.16	10.0	15.0	21.5		
12	0.889	545	630	1.16	9.0	14.0	22.0		
12	0.894	535	615	1.15	8.5	13.5	22.5		
12	0.895	545	635	1.17	9.5	14.5	22.0		
12	0.896	550	645	1.17	10.0	15.0	21.5		
12	0.887	545	635	1.17	9.5	14.5	22.0		
12	0.892	555	630	1.14	9.0	14.0	21.0		
12	0.889	550	635	1.15	9.5	14.5	21.0		
12	0.893	540	625	1.16	9.0	14.0	22.5		
12	0.885	535	620	1.16	8.5	13.5	22.5		
12	0.889	535	615	1.15	8.5	13.5	22.5		
12	0.891	545	635	1.17	9.5	14.5	22.0		
12	0.889	540	625	1.16	9.0	14.0	22.5		
12	0.889	535	615	1.15	8.5	13.5	22.5		
12	0.892	535	620	1.16	8.5	13.5	22.5		
12	0.891	545	635	1.17	9.5	14.5	22.0		
12	0.890	545	630	1.16	9.0	14.0	22.0		
12	0.882	540	625	1.16	9.0	14.0	22.5		
12	0.885	550	640	1.16	10.0	15.0	21.5		
12	0.887	550	635	1.15	9.5	14.5	21.5		
12	0.884	545	630	1.16	9.0	14.0	22.0		
12	0.885	545	630	1.16	9.0	14.0	22.0		
12	0.888	550	635	1.15	9.5	14.5	21.5		
12	0.889	545	635	1.17	9.5	14.5	22.0		
12	0.890	545	630	1.16	9.0	14.0	22.0		
12	0.884	550	635	1.15	9.5	14.5	21.5		
12	0.887	550	635	1.15	9.5	14.5	21.5		
12	0.889	555	645	1.16	10.0	15.0	21.0		
12	0.887	555	645	1.16	10.0	15.0	21.0		
12	0.885	560	650	1.16	10.0	15.0	20.5		
12	0.888	550	625	1.14	9.0	14.0	21.5		
12	0.891	550	635	1.15	9.5	14.5	21.5		
12	0.888	560	650	1.16	10.0	15.0	20.5		
12	0.885	550	635	1.15	9.5	14.5	21.5		
12	0.889	555	640	1.15	10.0	15.0	21.0		
12	0.891	555	645	1.16	10.0	15.0	21.0		
12	0.888	540	625	1.16	9.0	14.0	22.5		
12	0.883	535	620	1.16	8.5	13.5	22.5		
12	0.886	535	615	1.15	8.5	13.5	22.5		
12	0.883	545	635	1.17	9.5	14.5	22.0		
12	0.881	540	625	1.16	9.0	14.0	22.5		
12	0.882	535	615	1.15	8.5	13.5	22.5		
12	0.888	545	630	1.16	9.0	14.0	22.0		
12	0.886	545	630	1.16	9.0	14.0	22.0		
12	0.885	540	625	1.16	9.0	14.0	22.5		
12	0.880	540	625	1.16	9.0	14.0	22.5		
12	0.884	545	630	1.16	9.0	14.0	22.0		
12	0.887	555	645	1.16	10.0	15.0	21.0		
12	0.886	550	640	1.16	10.0	15.0	21.5		
12	0.883	555	645	1.16	10.0	15.0	21.0		
12	0.891	550	635	1.15	9.5	14.5	21.5		
12	0.889	535	615	1.15	8.5	13.5	22.5		
12	0.889	550	635	1.15	9.5	14.5	21.5		
12	0.891	550	635	1.15	9.5	14.5	21.5		
12	0.893	550	640	1.16	10.0	15.0	21.5		
12	0.892	550	635	1.15	9.5	14.5	21.5		

12	0.890	550	635	1.15	9.5	14.5	21.5	0.95	0.62
12	0.886	550	635	1.15	9.5	14.5	21.5		
12	0.889	545	630	1.16	9.0	14.0	22.0		
12	0.884	550	640	1.16	10.0	15.0	21.5		
12	0.883	550	630	1.15	9.0	14.5	21.5		
12	0.882	555	640	1.15	10.0	14.5	21.0		
12	0.884	550	630	1.15	9.0	14.0	21.5		
12	0.887	545	625	1.15	9.0	14.0	22.0		
12	0.885	540	625	1.16	9.0	13.5	22.5		
12	0.884	540	620	1.15	8.5	13.5	22.5		
12	0.883	545	625	1.15	9.0	14.0	22.0		
12	0.886	550	630	1.15	9.0	14.0	21.5		
12	0.884	545	625	1.15	9.0	14.0	22.0		
12	0.886	545	625	1.15	9.0	14.0	22.0		
12	0.885	550	635	1.15	9.5	14.5	21.5		
12	0.887	550	635	1.15	9.5	14.5	21.5		
12	0.884	545	630	1.16	9.0	14.0	22.0		
12	0.885	555	645	1.16	10.0	15.0	21.0		
12	0.889	550	630	1.15	9.0	14.0	21.5		
12	0.891	560	655	1.17	10.0	15.0	21.0		
12	0.888	550	630	1.15	9.0	14.0	21.5		
12	0.883	535	615	1.15	8.5	13.5	22.5		
12	0.887	535	615	1.15	8.5	13.5	22.5		
12	0.889	540	620	1.15	8.5	13.5	22.5		
12	0.891	550	635	1.15	9.5	14.5	21.5		
12	0.888	540	620	1.15	8.5	13.5	22.5		
12	0.892	545	630	1.16	9.0	14.0	22.0		
12	0.893	545	630	1.16	9.0	14.0	22.0		
12	0.892	545	625	1.15	9.0	14.0	22.0		
12	0.889	545	625	1.15	9.0	14.0	22.0		
12	0.894	540	625	1.16	9.0	14.0	22.5		
12	0.893	535	615	1.15	8.5	13.5	22.5		
12	0.891	535	615	1.15	8.5	13.5	22.5		
12	0.882	540	625	1.16	9.0	14.0	22.0		
12	0.886	540	630	1.17	9.0	14.0	22.5		
12	0.887	545	635	1.17	9.5	14.5	22.0		
12	0.889	545	630	1.16	9.0	14.0	22.0		
12	0.883	535	615	1.15	8.5	13.5	22.5		
12	0.889	550	635	1.15	9.5	14.5	21.5		
12	0.890	550	635	1.15	9.5	14.5	21.5		
12	0.888	545	625	1.15	9.0	14.0	22.0		
12	0.889	550	640	1.16	10.0	15.0	21.5		
12	0.891	550	640	1.16	10.0	15.0	21.5		
12	0.889	545	630	1.16	9.0	14.0	22.0		
12	0.889	545	630	1.16	9.0	14.0	22.0		
12	0.892	555	645	1.16	10.0	15.0	21.5		
12	0.894	555	645	1.16	10.0	15.0	21.0		
12	0.893	555	645	1.16	10.0	15.0	21.0		
12	0.891	550	640	1.16	10.0	15.0	21.5		
12	0.887	535	615	1.15	8.5	13.5	22.5		
12	0.890	540	625	1.16	9.0	14.0	22.5		
12	0.891	535	615	1.15	8.5	13.5	22.5		
12	0.892	535	615	1.15	8.5	13.5	22.5		
12	0.885	550	630	1.15	9.0	14.0	21.5		
12	0.891	545	635	1.17	9.5	14.5	22.0		
12	0.889	545	630	1.16	9.0	14.0	22.0		
12	0.890	555	645	1.16	10.0	15.0	21.5		
12	0.888	545	630	1.16	9.0	14.0	22.0		
12	0.891	550	640	1.16	10.0	15.0	21.5		
12	0.894	545	630	1.16	9.0	14.0	22.0		
12	0.894	545	630	1.16	9.0	14.0	22.0		
12	0.893	550	635	1.15	9.5	14.5	21.5		
12	0.895	540	625	1.16	9.0	14.0	22.5		
12	0.894	545	630	1.16	9.0	14.0	22.0		
12	0.895	540	625	1.16	9.0	14.0	22.5		
12	0.896	560	645	1.15	8.5	14.5	21.5		
12	0.892	550	630	1.15	8.0	14.0	21.0		
12	0.891	555	650	1.17	8.0	14.0	21.0		
12	0.890	555	640	1.15	9.0	15.0	21.5		
12	0.894	550	630	1.15	8.5	14.5	21.0		
12	0.893	550	635	1.15	9.0	15.0	21.5		
12	0.889	560	650	1.16	9.5	16.0	22.0		
12	0.889	555	650	1.17	10.0	16.5	22.5		
12	0.895	555	640	1.15	9.0	15.0	21.5		
12	0.892	560	655	1.17	9.0	14.5	21.0		
12	0.890	550	630	1.15	9.5	15.0	21.5		

12	0.891	555	640	1.15	9.0	14.5	21.0	1.1	0.9
12	0.893	545	625	1.15	8.5	14.0	20.5		
12	0.889	530	610	1.15	9.0	15.0	21.5		
12	0.886	560	645	1.15	9.0	15.0	21.5		
12	0.888	555	645	1.16	8.5	14.5	21.0		
12	0.895	545	625	1.15	8.5	14.5	21.0		
12	0.892	540	620	1.15	8.5	14.5	21.0		
12	0.896	555	645	1.16	9.0	15.0	21.5		
12	0.893	555	650	1.17	8.0	14.0	21.0		
12	0.897	545	625	1.15	8.0	14.0	21.0		
12	0.895	545	620	1.14	8.5	14.5	21.5		
12	0.897	560	655	1.17	9.5	15.5	22.0		
12	0.891	555	650	1.17	8.0	14.0	21.0		
12	0.898	550	635	1.15	8.5	14.0	21.0		
12	0.897	540	630	1.17	9.0	15.0	21.5		
12	0.896	560	640	1.14	9.0	15.0	21.5		
12	0.894	555	640	1.15	8.0	13.5	20.0		
12	0.894	525	615	1.17	8.5	14.5	21.5		
12	0.891	555	645	1.16	9.0	15.5	22.5		
12	0.889	560	655	1.17	8.5	14.0	21.0		
12	0.888	545	625	1.15	8.5	14.5	21.0		
12	0.895	550	635	1.15	8.5	14.5	21.0		
12	0.893	545	625	1.15	8.5	14.5	21.0		
12	0.894	545	630	1.16	8.0	14.0	21.0		
12	0.895	550	630	1.15	8.0	13.5	20.5		
12	0.897	530	615	1.16	8.5	14.0	21.0		
12	0.898	545	625	1.15	9.0	15.0	21.5		
12	0.896	560	640	1.14	9.0	14.5	21.0		
12	0.899	535	620	1.16	8.0	13.5	20.5		
12	0.895	535	615	1.15	8.0	14.0	21.0		
12	0.892	545	625	1.15	8.5	14.5	21.5		
12	0.896	555	635	1.14	8.0	13.5	20.5		
12	0.893	535	620	1.16	8.0	13.0	20.0		
12	0.897	530	610	1.15	8.5	14.0	21.0		
12	0.895	550	625	1.14	9.0	14.5	21.5		
12	0.897	550	635	1.15	8.0	13.5	20.5		
12	0.891	535	610	1.14	8.0	13.5	20.5		
12	0.898	535	615	1.15	9.5	15.5	22.0		
12	0.897	555	650	1.17	9.5	16.0	22.5		
12	0.896	560	650	1.16	9.0	15.5	22.0		
12	0.894	555	645	1.16	9.0	15.0	21.5		
12	0.896	555	640	1.15	9.0	15.0	21.5		
12	0.895	555	640	1.15	9.5	15.5	22.0		
12	0.891	550	635	1.15	9.0	15.0	21.5		
12	0.890	555	640	1.15	9.0	15.0	21.5		
12	0.898	550	630	1.15	8.5	14.5	21.0		
12	0.891	555	640	1.15	9.0	15.0	21.5		
12	0.896	550	635	1.15	9.0	15.0	21.5		
12	0.897	535	615	1.15	8.0	14.0	20.5		
12	0.897	560	640	1.14	10.0	16.0	22.5		
12	0.894	550	635	1.15	9.5	15.0	21.5		
12	0.898	555	640	1.15	9.5	15.5	22.0		
12	0.899	555	645	1.16	10.0	16.0	22.5		
12	0.889	545	630	1.16	9.0	14.0	22.0		
12	0.888	560	645	1.15	10.0	15.0	21.0		
12	0.886	545	630	1.16	9.0	14.0	22.0		
12	0.885	540	630	1.17	9.0	14.0	22.5		
12	0.881	555	645	1.16	10.0	15.0	21.0		
12	0.879	540	630	1.17	9.0	14.0	22.5		
12	0.882	550	635	1.15	9.5	14.5	22.0		
12	0.881	540	625	1.16	9.0	14.0	22.5		
12	0.883	535	615	1.15	8.5	13.5	22.5		
12	0.880	555	645	1.16	10.0	15.0	21.5		
12	0.884	545	625	1.15	9.0	14.0	22.0		
12	0.882	555	645	1.16	10.0	15.0	21.5		
12	0.889	545	630	1.16	9.0	14.0	22.0		
12	0.887	550	640	1.16	10.0	15.0	22.0		
12	0.886	545	625	1.15	9.0	14.0	22.0		
12	0.882	540	625	1.16	9.0	14.0	22.5		
12	0.881	545	625	1.15	9.0	14.0	22.0		
12	0.881	545	630	1.16	9.0	14.0	22.0		
12	0.882	550	635	1.15	9.5	14.5	22.0		
12	0.883	555	645	1.16	10.0	15.0	21.5		
12	0.884	545	630	1.16	9.0	14.0	22.0		
12	0.883	545	625	1.15	9.0	14.0	22.0		
12	0.882	545	630	1.16	9.0	14.0	22.0		

0.98

0.92

12	0.880	540	620	1.15	8.5	13.5	22.5	0.95	0.75
12	0.881	550	630	1.15	9.0	14.0	22.0		
12	0.882	550	635	1.15	9.5	14.5	22.0		
12	0.884	550	635	1.15	9.5	14.5	22.0		
12	0.883	545	625	1.15	9.0	14.0	22.0		
12	0.882	545	635	1.17	9.5	14.5	22.0		
12	0.881	550	635	1.15	9.5	14.5	22.0		
12	0.880	550	640	1.16	10.0	15.0	22.0		
12	0.883	550	635	1.15	9.5	14.5	22.0		
12	0.883	555	645	1.16	10.0	15.0	21.5		
12	0.884	560	655	1.17	10.5	15.5	21.0		
12	0.882	555	650	1.17	10.0	15.0	21.5		
12	0.883	550	635	1.15	9.5	14.5	22.0		
12	0.884	545	630	1.16	9.0	14.0	22.0		
12	0.882	540	625	1.16	9.0	14.0	22.5		
12	0.883	535	615	1.15	8.5	13.5	22.5		
12	0.881	545	630	1.16	9.0	14.0	22.0		
12	0.882	555	645	1.16	10.0	15.0	21.5		
12	0.883	550	640	1.16	10.0	15.0	22.0		
12	0.883	550	635	1.15	9.5	14.5	22.0		
12	0.886	545	625	1.15	9.0	14.0	22.0		
12	0.885	545	630	1.16	9.0	14.0	22.0		
12	0.889	550	635	1.15	9.5	14.5	22.0		
12	0.882	550	630	1.15	9.0	14.0	22.0		
12	0.883	555	640	1.15	10.0	15.0	21.5		
12	0.887	550	635	1.15	9.5	14.5	22.0		
12	0.889	545	625	1.15	9.0	14.0	22.0		
12	0.882	545	625	1.15	9.0	14.0	22.0		
12	0.886	540	620	1.15	8.5	13.5	22.5		
12	0.890	545	630	1.16	9.0	14.0	22.0		
12	0.891	555	645	1.16	10.0	15.0	21.5		
12	0.886	550	640	1.16	10.0	15.0	22.0		
12	0.887	545	630	1.16	9.0	14.0	22.0		
12	0.889	545	635	1.17	9.5	14.5	22.0		
12	0.887	555	645	1.16	10.0	15.0	21.5		
12	0.882	550	640	1.16	10.0	15.0	22.0		
12	0.883	545	635	1.17	9.5	14.5	22.0		
12	0.884	555	645	1.16	10.0	15.0	21.5		
12	0.885	545	630	1.16	9.0	14.0	22.0		
12	0.883	545	635	1.17	9.5	14.5	22.0		
12	0.882	545	630	1.16	9.0	14.0	22.0		
12	0.885	535	615	1.15	8.5	13.5	22.5		
12	0.883	545	625	1.15	9.0	14.0	22.0		
12	0.882	540	620	1.15	8.5	13.5	22.5		
12	0.880	550	640	1.16	10.0	15.0	22.0		
12	0.886	545	630	1.16	9.0	14.0	22.0		
12	0.884	535	615	1.15	8.5	13.5	22.5		
12	0.885	535	615	1.15	8.5	13.5	22.5		
12	0.882	535	615	1.15	8.5	13.5	22.5		
12	0.881	540	630	1.17	9.0	14.0	22.5		
12	0.882	550	640	1.16	10.0	15.0	22.0		
12	0.883	540	630	1.17	9.0	14.0	22.5		
12	0.880	545	630	1.16	9.0	14.0	22.0		
12	0.884	540	625	1.16	9.0	14.0	22.5		
12	0.885	540	630	1.17	9.0	14.0	22.5		
12	0.886	540	630	1.17	9.0	14.0	22.5		
12	0.882	545	635	1.17	9.5	14.0	22.0		
12	0.886	555	650	1.17	10.0	15.0	21.5		
12	0.884	545	630	1.16	9.0	14.0	22.0		
12	0.882	545	630	1.16	9.0	14.0	22.0		
12	0.885	550	635	1.15	9.5	14.5	22.0		
12	0.882	545	635	1.17	9.5	14.5	22.0		
12	0.883	545	630	1.16	9.0	14.0	22.0		
12	0.884	555	645	1.16	10.0	15.0	21.5		
12	0.885	550	640	1.16	10.0	15.0	22.0		
12	0.883	545	630	1.16	9.0	14.0	22.0		
12	0.884	540	630	1.17	9.0	14.0	22.5		
12	0.889	535	615	1.15	8.5	13.5	22.5		
12	0.890	545	635	1.17	9.5	14.5	22.0		
12	0.884	535	615	1.15	8.5	13.5	22.5		
12	0.883	550	640	1.16	10.0	15.0	22.0		
12	0.885	535	615	1.15	8.5	13.5	22.5		
12	0.886	535	615	1.15	8.5	13.5	22.5		
12	0.884	545	635	1.17	9.5	14.5	22.0		
12	0.886	540	625	1.16	9.0	14.0	22.5		
12	0.887	545	625	1.15	9.0	14.0	22.0		

1.02

0.85

0.98

0.82

12	0.886	550	630	1.15	9.0	14.0	22.0		
12	0.888	550	640	1.16	10.0	15.0	22.0		
12	0.887	545	630	1.16	9.0	14.0	22.0		
12	0.885	545	635	1.17	9.5	14.5	22.0		
12	0.889	540	630	1.17	9.0	14.0	22.5		
12	0.887	545	630	1.16	9.0	14.0	22.0		
12	0.886	550	640	1.16	10.0	15.0	22.0		
12	0.885	540	630	1.17	9.0	14.0	22.5		
12	0.884	545	635	1.17	9.5	14.5	22.0		
12	0.888	545	630	1.16	9.0	14.0	22.0		
12	0.887	550	635	1.15	9.5	14.5	22.0		
12	0.886	530	615	1.16	8.5	13.5	23.0		
12	0.885	540	625	1.16	9.0	14.0	22.5		
12	0.884	545	630	1.16	9.0	14.0	21.5		
12	0.887	560	660	1.18	8.5	15.0	22.5		
12	0.889	545	630	1.16	8.0	15.5	23.5		
12	0.889	560	650	1.16	9.5	14.0	23.5		
12	0.884	560	660	1.18	8.0	14.0	22.5		
12	0.889	545	645	1.18	9.0	13.5	22.5		
12	0.889	545	635	1.17	8.0	14.0	21.0		
12	0.887	555	635	1.14	9.5	15.0	22.5		
12	0.886	560	660	1.18	8.0	14.0	21.0		
12	0.890	550	655	1.19	9.5	15.0	22.5		
12	0.887	535	630	1.18	8.0	14.0	21.5		
12	0.887	555	630	1.14	9.5	15.5	21.5		
12	0.887	560	650	1.16	8.0	14.0	22.5		
12	0.894	550	650	1.18	9.0	15.0	23.5		
12	0.887	530	625	1.18	8.5	14.0	22.5		
12	0.890	540	630	1.17	9.5	13.5	21.5		
12	0.892	555	620	1.12	8.0	14.0	22.5		
12	0.886	555	625	1.13	9.0	15.5	22.5		
12	0.889	545	635	1.17	8.0	14.0	22.5	1.10	0.65
12	0.884	545	625	1.15	9.5	13.5	22.5		
12	0.880	540	635	1.18	8.0	14.0	22.5		
12	0.881	535	630	1.18	9.5	15.0	21.5		
12	0.886	545	635	1.17	8.5	14.0	23.5		
12	0.883	535	630	1.18	9.0	13.5	23.5		
12	0.884	550	630	1.15	10.0	14.0	23.5		
12	0.885	550	620	1.13	8.0	15.0	23.5		
12	0.889	550	645	1.17	9.5	14.0	21.5		
12	0.882	545	645	1.18	8.0	13.5	21.5		
12	0.885	545	630	1.16	10.0	13.5	21.5		
12	0.886	540	630	1.17	8.0	15.0	20.5		
12	0.889	545	620	1.14	9.5	14.0	20.5		
12	0.884	540	640	1.19	8.0	15.5	22.5		
12	0.883	545	630	1.16	9.5	14.0	22.5		
12	0.886	535	630	1.18	8.0	13.5	22.0		
12	0.882	550	640	1.16	9.5	15.0	20.5		
12	0.885	535	630	1.18	8.0	14.0	21.5		
12	0.889	540	620	1.15	9.0	15.5	23.5		
12	0.884	540	620	1.15	10.0	14.0	21.5		
12	0.886	540	635	1.18	8.0	15.0	21.5		
12	0.883	525	620	1.18	9.5	13.5	23.5		
12	0.881	545	635	1.17	8.0	14.0	22.0		
12	0.886	550	625	1.14	9.5	15.0	21.0		
12	0.889	530	630	1.19	8.0	14.0	21.5		
12	0.890	525	615	1.17	9.5	15.0	22.5		
12	0.894	550	620	1.13	8.0	14.0	22.5		
12	0.896	545	650	1.19	9.0	13.5	22.5		
12	0.890	555	625	1.13	10.0	15.0	22.5		
12	0.883	540	645	1.19	8.0	14.0	21.5		
12	0.886	560	625	1.12	9.5	15.5	22.5		
12	0.889	560	630	1.13	8.0	14.0	22.5		
12	0.880	540	630	1.17	9.5	15.0	21.0		
12	0.891	560	635	1.13	8.0	14.0	22.5		
12	0.876	550	630	1.15	9.5	13.5	22.5	1.10	0.65
12	0.888	550	625	1.14	8.0	14.0	22.5		
12	0.882	560	630	1.13	9.5	15.0	21.5		
12	0.880	560	625	1.12	8.0	14.0	20.0		
12	0.880	560	645	1.15	9.5	13.5	21.5		
12	0.884	545	650	1.19	8.0	14.0	21.5		
12	0.885	560	660	1.18	9.5	15.0	21.5		
12	0.886	545	645	1.18	8.0	14.0	22.5		
12	0.881	560	655	1.17	9.0	13.5	22.5		
12	0.886	550	630	1.15	8.0	15.0	22.5		
12	0.882	560	630	1.13	10.0	14.0	21.0		

12	0.889	555	660	1.19	8.0	15.5	22.5	1.10	0.65
12	0.883	560	635	1.13	9.5	14.0	23.5		
12	0.880	555	655	1.18	8.0	15.5	23.5		
12	0.882	560	640	1.14	9.5	14.0	22.5		
12	0.885	555	650	1.17	8.0	13.5	21.5		
12	0.886	535	630	1.18	9.5	15.0	21.5		
12	0.889	535	635	1.19	8.0	14.0	22.5		
12	0.887	530	625	1.18	9.0	13.5	23.5		
12	0.888	560	625	1.12	8.0	15.0	22.5		
12	0.884	550	615	1.12	10.0	14.0	22.5		
12	0.882	550	620	1.13	8.0	15.0	22.5		
12	0.883	555	625	1.13	9.5	14.0	22.5		
12	0.885	550	650	1.18	8.5	13.5	22.5		
12	0.882	560	650	1.16	9.0	14.0	21.5		
12	0.881	540	635	1.18	8.0	15.0	21.0		
12	0.886	540	635	1.18	9.5	14.0	23.5		
12	0.889	560	625	1.12	8.0	13.5	21.5		
12	0.887	555	620	1.12	9.5	14.0	22.5		
12	0.883	540	625	1.16	8.0	15.0	21.0		
12	0.881	540	630	1.17	9.0	14.0	21.5		
12	0.885	550	650	1.18	10.0	14.5	21.5		
12	0.888	560	650	1.16	8.0	13.5	21.5		
12	0.889	555	635	1.14	9.5	14.0	23.5		
12	0.890	525	625	1.19	8.0	15.0	21.5		
12	0.891	530	620	1.17	9.5	14.0	21.5		
12	0.886	545	650	1.19	8.5	13.5	21.0		
12	0.887	535	630	1.18	9.5	14.0	21.0		
12	0.883	545	645	1.18	8.5	13.5	21.5		
12	0.882	540	635	1.18	9.0	14.0	22.0		
12	0.885	555	640	1.15	8.0	15.5	22.5		
12	0.898	540	635	1.18	9.5	13.5	21.5		
12	0.890	555	655	1.18	8.0	14.0	22.5		
12	0.884	545	625	1.15	9.0	15.0	21.5		
12	0.886	540	625	1.16	10.0	14.0	22.5		
12	0.883	540	635	1.18	8.0	13.5	22.5		
12	0.881	550	630	1.15	9.5	14.0	21.5		
12	0.886	545	650	1.19	8.0	15.0	21.5		
12	0.884	545	635	1.17	9.5	14.0	21.5		
12	0.885	545	620	1.14	8.0	13.5	20.5		
12	0.889	540	635	1.18	9.5	14.0	21.5		
12	0.883	540	625	1.16	8.0	15.0	22.0		
12	0.884	560	650	1.16	9.5	14.0	21.0		
12	0.885	555	645	1.16	8.0	13.5	21.5		
12	0.889	540	620	1.15	10.0	14.0	21.5		
12	0.892	560	640	1.14	8.0	15.0	22.0		
12	0.883	545	620	1.14	9.5	14.0	23.5		
12	0.886	530	610	1.15	8.0	13.5	20.5		
12	0.881	540	635	1.18	9.0	14.0	21.5		
12	0.889	560	650	1.16	8.5	13.5	22.0		
12	0.882	560	645	1.15	9.0	14.0	21.0		
12	0.885	555	650	1.17	10.0	15.5	21.5		
12	0.889	555	640	1.15	8.0	14.0	20.5		
12	0.890	535	615	1.15	9.5	13.5	22.0		
12	0.886	550	640	1.16	8.0	14.0	21.5		
12	0.886	540	620	1.15	9.0	13.5	22.5		
12	0.883	530	615	1.16	10.0	14.0	21.5		
12	0.881	550	625	1.14	8.0	15.5	22.5		
12	0.882	535	615	1.15	9.5	14.0	21.0		
12	0.889	525	620	1.18	8.0	13.5	22.5		
12	0.887	550	625	1.14	9.5	14.0	22.5		
12	0.886	545	635	1.17	8.0	15.0	22.0		
12	0.880	550	625	1.14	10.0	15.0	21.5		
12	0.888	555	655	1.18	8.0	14.0	22.5		
12	0.889	550	645	1.17	9.5	13.5	21.5		
12	0.887	540	630	1.17	8.0	14.0	23.5		
12	0.880	555	640	1.15	9.0	15.0	21.0		
12	0.879	560	645	1.15	9.5	14.0	22.5		
12	0.883	555	655	1.18	8.5	13.5	22.5		
12	0.884	560	650	1.16	8.0	15.0	22.5		
12	0.890	545	635	1.17	9.0	14.5	21.5		
12	0.889	535	620	1.16	8.5	14.0	21.0		
12	0.893	545	635	1.17	10.0	15.5	22.5		
12	0.892	530	615	1.16	9.5	14.5	22.0		
12	0.893	540	625	1.16	10.0	16.0	22.5		
12	0.891	530	605	1.14	8.0	13.5	20.5		
12	0.896	530	615	1.16	8.5	13.5	21.0		

1.10

0.65

1.15

0.70

12	0.896	525	600	1.14	8.0	13.0	20.0	1.10	0.65
12	0.895	540	630	1.17	9.0	14.5	21.5		
12	0.895	520	610	1.17	8.0	13.0	20.0		
12	0.894	525	615	1.17	8.5	13.5	21.0		
12	0.893	530	620	1.17	9.5	14.5	22.0		
12	0.897	535	625	1.17	10.0	15.5	22.5		
12	0.894	520	610	1.17	8.0	13.0	20.5		
12	0.896	530	605	1.14	8.0	13.5	20.0		
12	0.896	540	625	1.16	9.0	14.5	22.0		
12	0.895	545	640	1.17	9.5	15.5	22.5		
12	0.881	550	640	1.16	8.5	13.0	21.0		
12	0.884	560	645	1.15	8.0	13.0	20.5		
12	0.883	540	630	1.17	9.5	14.5	22.0		
12	0.880	535	615	1.15	8.5	13.5	21.0		
12	0.889	530	615	1.16	9.0	14.0	21.5		
12	0.895	560	650	1.16	8.0	13.5	20.5		
12	0.894	560	650	1.16	8.5	13.0	20.5		
12	0.891	565	650	1.15	8.5	14.0	21.0		
12	0.894	550	640	1.16	9.0	14.0	21.5		
12	0.897	535	625	1.17	9.5	15.0	22.0		
12	0.896	530	620	1.17	9.0	14.5	21.5		
12	0.895	530	620	1.17	9.0	15.0	21.5		
12	0.895	540	630	1.17	10.0	16.0	22.5		
12	0.892	560	650	1.16	8.5	13.5	21.0		
12	0.891	560	645	1.15	9.0	14.0	21.5		
12	0.890	530	615	1.16	8.5	13.5	21.0		
12	0.893	535	625	1.17	10.0	16.0	22.5		
12	0.895	545	640	1.17	9.5	15.5	22.0		
12	0.896	540	620	1.15	8.0	13.0	20.5		
12	0.897	535	615	1.15	9.0	14.0	21.5		
12	0.894	530	605	1.14	8.5	13.0	20.5		
12	0.895	550	630	1.15	9.0	14.5	21.5		
12	0.892	540	635	1.18	10.0	15.5	22.5		
12	0.892	540	630	1.17	10.5	16.5	23.0		
12	0.891	525	605	1.15	8.0	13.0	20.0		
12	0.892	525	605	1.15	8.5	13.5	20.5		
12	0.893	550	635	1.15	9.5	15.0	22.0		
12	0.895	545	625	1.15	10.0	16.5	23.0		
12	0.896	530	610	1.15	8.5	14.0	21.0		
12	0.894	550	635	1.15	9.5	15.5	22.5		
12	0.891	525	605	1.15	8.5	13.5	21.0		
12	0.890	555	645	1.16	8.5	14.0	21.0		
12	0.892	530	625	1.18	9.0	14.5	21.5		
12	0.893	525	610	1.16	8.0	13.5	20.5		
12	0.895	525	610	1.16	8.0	13.0	20.0		
12	0.894	560	660	1.18	8.5	13.5	20.5		
12	0.897	555	650	1.17	8.5	14.0	21.0		
12	0.896	535	635	1.19	10.0	15.5	22.5		
12	0.893	540	635	1.18	10.5	16.5	23.5		
12	0.891	555	640	1.15	9.5	15.0	22.0		
12	0.890	540	635	1.18	8.5	13.5	21.0		
12	0.892	550	650	1.18	9.5	15.0	22.0		
12	0.893	545	635	1.17	9.0	14.5	21.5		
12	0.894	535	620	1.16	8.5	13.5	21.0		
12	0.896	540	630	1.17	10.0	16.0	23.5		
12	0.895	535	630	1.18	9.5	15.0	22.0		
12	0.896	545	640	1.17	10.0	15.5	22.5		
12	0.897	565	650	1.15	8.0	13.5	20.5		
12	0.893	540	635	1.18	9.0	14.0	21.0		
12	0.895	530	620	1.17	8.5	14.0	21.0		
12	0.892	535	620	1.16	9.0	14.5	21.5		
12	0.894	565	655	1.16	8.0	13.0	20.0		
12	0.892	550	640	1.16	9.5	15.0	22.0		
12	0.890	535	630	1.18	9.0	15.0	22.0		
12	0.889	535	625	1.17	8.5	13.5	21.0		
12	0.897	550	635	1.15	10.0	16.0	23.0		
12	0.896	540	630	1.17	9.5	14.5	22.0		
12	0.892	560	645	1.15	8.5	13.5	21.0		
12	0.891	535	625	1.17	10.0	15.5	22.5		
12	0.892	540	635	1.18	10.0	16.0	22.5		
12	0.896	560	655	1.17	8.5	13.5	21.0		
12	0.895	560	650	1.16	8.0	13.5	20.5		
12	0.894	535	630	1.18	9.0	14.5	22.0		
12	0.897	540	635	1.18	9.5	15.0	22.0		
12	0.892	545	640	1.17	9.0	14.0	21.5		
12	0.893	525	615	1.17	8.5	13.5	21.0		

12	0.890	525	605	1.15	8.0	13.0	20.0	1.15	0.80
12	0.891	555	655	1.18	8.5	13.5	20.5		
12	0.895	535	630	1.18	9.5	15.0	22.0		
12	0.894	530	615	1.16	8.5	13.5	20.5		
12	0.891	535	625	1.17	9.0	14.5	21.5		
12	0.895	560	650	1.16	8.5	13.5	21.0		
12	0.896	545	635	1.17	9.5	14.5	22.0		
12	0.894	535	620	1.16	8.5	13.5	21.0		
12	0.895	545	630	1.16	10.0	16.0	22.5		
12	0.896	560	645	1.15	8.5	13.5	21.0		
12	0.892	535	620	1.16	8.5	13.0	21.0		
12	0.893	530	605	1.14	9.0	13.5	21.0		
12	0.894	530	605	1.14	8.0	13.0	20.5		
12	0.896	555	640	1.15	9.0	14.0	21.5		
12	0.897	540	635	1.18	10.0	16.0	22.5		
12	0.895	555	655	1.18	9.0	14.5	21.5		
12	0.893	545	625	1.15	9.5	15.5	22.5		
12	0.901	540	625	1.16	10.0	16.0	22.5		
12	0.903	550	640	1.16	9.0	14.0	21.5		
12	0.896	540	620	1.15	8.5	14.0	21.5		
12	0.894	530	615	1.16	9.0	14.5	21.5		
12	0.892	530	610	1.15	9.5	14.5	22.0		
12	0.891	555	640	1.15	10.0	16.0	23.0		
12	0.896	545	625	1.15	9.0	14.5	21.5		
12	0.894	560	645	1.15	8.5	13.5	21.0		
12	0.897	535	625	1.17	9.0	14.0	21.5		
12	0.896	550	635	1.15	9.5	15.5	22.5		
12	0.892	555	650	1.17	10.0	16.0	22.5		
12	0.893	540	620	1.15	8.5	13.5	21.0		
12	0.894	560	645	1.15	8.5	14.0	21.0		
12	0.892	555	650	1.17	10.0	16.5	23.5		
12	0.893	560	665	1.19	9.5	15.5	22.5		
12	0.891	525	605	1.15	9.0	14.5	22.0		
12	0.892	560	650	1.16	10.0	16.0	22.5		
12	0.895	545	640	1.17	9.0	14.0	21.5		
12	0.893	525	600	1.14	10.0	15.5	22.5		
12	0.891	555	655	1.18	10.5	16.5	23.0		
12	0.895	555	655	1.18	8.0	13.0	20.0		
12	0.893	550	650	1.18	10.5	16.0	23.5		
12	0.891	560	655	1.17	9.5	14.5	22.0		
12	0.890	560	645	1.15	10.0	16.0	23.0		
12	0.894	540	625	1.16	9.0	14.0	22.5		
12	0.897	540	620	1.15	8.5	13.5	22.5		
12	0.896	555	645	1.16	10.0	15.0	21.0		
12	0.900	545	635	1.17	9.5	14.5	22.0		
12	0.887	550	640	1.16	10.0	15.0	21.5		
12	0.889	550	635	1.15	9.5	14.5	21.5		
12	0.885	535	615	1.15	8.5	13.5	22.5		
12	0.886	545	630	1.16	9.0	14.0	22.0		
12	0.887	550	640	1.16	10.0	15.0	21.5		
12	0.885	555	645	1.16	10.0	15.0	21.0		
12	0.886	550	635	1.15	9.5	14.5	21.5		
12	0.884	550	635	1.15	9.5	14.5	21.5		
12	0.885	540	625	1.16	9.0	14.0	22.5		
12	0.886	540	625	1.16	9.0	14.0	22.5		
12	0.884	540	625	1.16	9.0	14.0	22.5		
12	0.885	550	640	1.16	10.0	15.0	21.5		
12	0.882	545	630	1.16	9.0	14.0	22.0		
12	0.883	535	615	1.15	8.5	13.5	22.5		
12	0.887	545	635	1.17	9.5	14.5	22.0		
12	0.886	550	645	1.17	10.0	15.0	21.5		
12	0.885	545	635	1.17	9.5	14.5	22.0		
12	0.884	555	630	1.14	9.0	14.0	21.0		
12	0.886	550	635	1.15	9.5	14.5	21.0		
12	0.882	540	625	1.16	9.0	14.0	22.5		
12	0.883	535	620	1.16	8.5	13.5	22.5		
12	0.884	535	615	1.15	8.5	13.5	22.5		
12	0.886	545	635	1.17	9.5	14.5	22.0		
12	0.882	540	625	1.16	9.0	14.0	22.5		
12	0.885	535	615	1.15	8.5	13.5	22.5		
12	0.887	535	620	1.16	8.5	13.5	22.5		
12	0.886	545	635	1.17	9.5	14.5	22.0		
12	0.886	545	630	1.16	9.0	14.0	22.0		
12	0.884	540	625	1.16	9.0	14.0	22.5		
12	0.885	550	640	1.16	10.0	15.0	21.5		
12	0.885	550	640	1.16	10.0	15.0	21.5		
12	0.884	550	635	1.15	9.5	14.5	21.5		

12	0.886	545	630	1.16	9.0	14.0	22.0	1.05	0.70
12	0.887	545	630	1.16	9.0	14.0	22.0		
12	0.889	550	635	1.15	9.5	14.5	21.5		
12	0.888	545	635	1.17	9.5	14.5	22.0		
12	0.887	545	630	1.16	9.0	14.0	22.0		
12	0.886	550	635	1.15	9.5	14.5	21.5		
12	0.884	550	635	1.15	9.5	14.5	21.5		
12	0.885	555	645	1.16	10.0	15.0	21.0		
12	0.886	555	645	1.16	10.0	15.0	21.0		
12	0.887	560	650	1.16	10.0	15.0	20.5		
12	0.888	550	625	1.14	9.0	14.0	21.5		
12	0.890	550	635	1.15	9.5	14.5	21.5		
12	0.890	560	650	1.16	10.0	15.0	20.5		
12	0.888	550	635	1.15	9.5	14.5	21.5		
12	0.887	555	640	1.15	10.0	15.0	21.0		
12	0.888	555	645	1.16	10.0	15.0	21.0		
12	0.886	540	625	1.16	9.0	14.0	22.5		
12	0.885	535	620	1.16	8.5	13.5	22.5		
12	0.887	535	615	1.15	8.5	13.5	22.5		
12	0.889	545	635	1.17	9.5	14.5	22.0		
12	0.884	540	625	1.16	9.0	14.0	22.5		
12	0.886	535	615	1.15	8.5	13.5	22.5		
12	0.887	545	630	1.16	9.0	14.0	22.0		
12	0.886	545	630	1.16	9.0	14.0	22.0		
12	0.885	540	625	1.16	9.0	14.0	22.5		
12	0.882	540	625	1.16	9.0	14.0	22.5		
12	0.883	545	630	1.16	9.0	14.0	22.0		
12	0.886	555	645	1.16	10.0	15.0	21.0		
12	0.887	550	640	1.16	10.0	15.0	21.5		
12	0.889	555	645	1.16	10.0	15.0	21.0		
12	0.885	550	635	1.15	9.5	14.5	21.5		
12	0.886	535	615	1.15	8.5	13.5	22.5		
12	0.886	550	635	1.15	9.5	14.5	21.5		
12	0.887	550	635	1.15	9.5	14.5	21.5		
12	0.888	550	640	1.16	10.0	15.0	21.5		
12	0.889	550	635	1.15	9.5	14.5	21.5		
12	0.888	550	635	1.15	9.5	14.5	21.5		
12	0.884	550	635	1.15	9.5	14.5	21.5		
12	0.886	545	630	1.16	9.0	14.0	22.0		
12	0.882	550	640	1.16	10.0	15.0	21.5		
12	0.883	550	630	1.15	9.0	14.5	21.5		
12	0.884	555	640	1.15	10.0	14.5	21.0		
12	0.886	550	630	1.15	9.0	14.0	21.5		
12	0.885	545	625	1.15	9.0	14.0	22.0		
12	0.884	540	625	1.16	9.0	13.5	22.5		
12	0.883	540	620	1.15	8.5	13.5	22.5		
12	0.882	545	625	1.15	9.0	14.0	22.0		
12	0.887	550	630	1.15	9.0	14.0	21.5		
12	0.889	545	625	1.15	9.0	14.0	22.0		
12	0.888	545	625	1.15	9.0	14.0	22.0		
12	0.886	550	635	1.15	9.5	14.5	21.5		
12	0.888	550	635	1.15	9.5	14.5	21.5		
12	0.885	545	630	1.16	9.0	14.0	22.0		
12	0.886	555	645	1.16	10.0	15.0	21.0		
12	0.884	550	630	1.15	9.0	14.0	21.5		
12	0.886	560	655	1.17	10.0	15.0	21.0		
12	0.889	550	630	1.15	9.0	14.0	21.5		
12	0.890	535	615	1.15	8.5	13.5	22.5		
12	0.888	535	615	1.15	8.5	13.5	22.5		
12	0.887	540	620	1.15	8.5	13.5	22.5		
12	0.886	550	635	1.15	9.5	14.5	21.5		
12	0.887	540	620	1.15	8.5	13.5	22.5		
12	0.888	545	630	1.16	9.0	14.0	22.0		
12	0.889	545	630	1.16	9.0	14.0	22.0		
12	0.885	545	625	1.15	9.0	14.0	22.0		
12	0.889	545	625	1.15	9.0	14.0	22.0		
12	0.886	540	625	1.16	9.0	14.0	22.5		
12	0.887	535	615	1.15	8.5	13.5	22.5		
12	0.888	535	615	1.15	8.5	13.5	22.5		
12	0.885	540	625	1.16	9.0	14.0	22.0		
12	0.883	540	630	1.17	9.0	14.0	22.5		
12	0.884	545	635	1.17	9.5	14.5	22.0		
12	0.882	545	630	1.16	9.0	14.0	22.0		
12	0.888	535	615	1.15	8.5	13.5	22.5		
12	0.891	550	635	1.15	9.5	14.5	21.5		
12	0.887	550	635	1.15	9.5	14.5	21.5		

12	0.888	545	625	1.15	9.0	14.0	22.0	1.02	0.75
12	0.888	550	640	1.16	10.0	15.0	21.5		
12	0.892	550	640	1.16	10.0	15.0	21.5		
12	0.887	545	630	1.16	9.0	14.0	22.0		
12	0.886	545	630	1.16	9.0	14.0	22.0		
12	0.886	555	645	1.16	10.0	15.0	21.5		
12	0.891	555	645	1.16	10.0	15.0	21.0		
12	0.887	555	645	1.16	10.0	15.0	21.0		
12	0.886	550	640	1.16	10.0	15.0	21.5		
12	0.889	535	615	1.15	8.5	13.5	22.5		
12	0.890	540	625	1.16	9.0	14.0	22.5		
12	0.888	535	615	1.15	8.5	13.5	22.5		
12	0.888	535	615	1.15	8.5	13.5	22.5		
12	0.891	550	630	1.15	9.0	14.0	21.5		
12	0.892	545	635	1.17	9.5	14.5	22.0		
12	0.889	545	630	1.16	9.0	14.0	22.0		
12	0.890	555	645	1.16	10.0	15.0	21.5		
12	0.890	545	620	1.14	9.0	14.0	21.0		
12	0.892	550	635	1.15	8.5	15.0	22.5		
12	0.879	540	620	1.15	9.0	14.0	21.5		
12	0.878	550	625	1.14	8.0	14.0	21.0		
12	0.892	525	620	1.18	9.5	15.0	21.0		
12	0.894	540	615	1.14	10.0	15.5	21.5		
12	0.882	560	620	1.11	8.0	15.0	23.5		
12	0.880	545	645	1.18	9.5	16.0	21.0		
12	0.890	540	630	1.17	8.0	15.5	22.5		
12	0.891	535	620	1.16	10.0	14.0	21.0		
12	0.880	525	615	1.17	10.0	15.5	21.5		
12	0.883	550	625	1.14	8.0	14.0	23.5		
12	0.886	535	630	1.18	9.5	14.5	21.0		
12	0.882	525	615	1.17	8.0	15.0	22.5		
12	0.880	550	610	1.11	9.5	14.0	22.5		
12	0.883	540	635	1.18	8.0	15.0	21.0		
12	0.886	535	615	1.15	9.5	16.0	22.5		
12	0.885	545	610	1.12	8.0	14.0	23.5		
12	0.882	535	620	1.16	9.0	15.5	21.0		
12	0.883	555	615	1.11	10.0	14.5	21.5		
12	0.884	530	620	1.17	8.0	14.0	21.5		
12	0.889	540	610	1.13	9.0	15.0	21.0		
12	0.890	545	625	1.15	8.0	15.5	21.5		
12	0.886	555	645	1.16	9.0	16.0	21.5		
12	0.882	525	605	1.15	8.5	14.0	21.5		
12	0.883	550	640	1.16	9.5	15.0	21.5		
12	0.882	545	625	1.15	8.0	14.0	21.5		
12	0.881	530	610	1.15	9.5	15.5	22.5		
12	0.886	530	610	1.15	8.0	14.0	23.5		
12	0.889	550	645	1.17	9.0	15.5	22.5		
12	0.890	545	635	1.17	10.0	14.0	22.5		
12	0.884	545	635	1.17	8.0	15.0	21.5		
12	0.880	540	620	1.15	9.5	14.0	21.5		
12	0.882	535	625	1.17	8.0	15.5	21.5		
12	0.885	525	605	1.15	9.5	16.0	21.0		
12	0.883	540	610	1.13	8.0	14.0	20.0		
12	0.884	530	615	1.16	9.0	15.5	23.5		
12	0.886	545	640	1.17	8.5	14.0	21.5		
12	0.887	550	615	1.12	9.5	15.0	20.0		
12	0.884	545	615	1.13	8.0	14.0	23.0		
12	0.885	560	650	1.16	9.0	15.5	21.0		
12	0.884	545	645	1.18	8.0	14.0	21.5		
12	0.880	540	620	1.15	9.0	15.5	21.0		
12	0.882	560	640	1.14	10.0	14.0	22.0		
12	0.881	545	620	1.14	8.0	15.5	21.5		
12	0.884	530	610	1.15	9.5	14.0	20.5		
12	0.882	540	630	1.17	8.0	15.0	22.5		
12	0.881	530	625	1.18	9.5	14.0	21.0		
12	0.889	560	645	1.15	8.0	15.5	21.0		
12	0.884	560	650	1.16	9.5	15.0	20.5		
12	0.883	560	640	1.14	8.0	14.0	22.0		
12	0.882	535	615	1.15	9.5	14.0	22.0		
12	0.884	555	620	1.12	8.0	15.0	21.0		
12	0.882	555	640	1.15	9.0	14.5	21.0		
12	0.887	550	650	1.18	8.0	15.5	21.5		
12	0.885	540	630	1.17	9.5	14.0	21.5		
12	0.882	550	640	1.16	10.0	15.0	23.5		
12	0.887	545	640	1.17	8.0	14.0	22.5		
12	0.886	560	645	1.15	9.5	15.0	21.0		

12	0.883	550	650	1.18	8.0	14.5	22.5		
----	-------	-----	-----	------	-----	------	------	--	--

