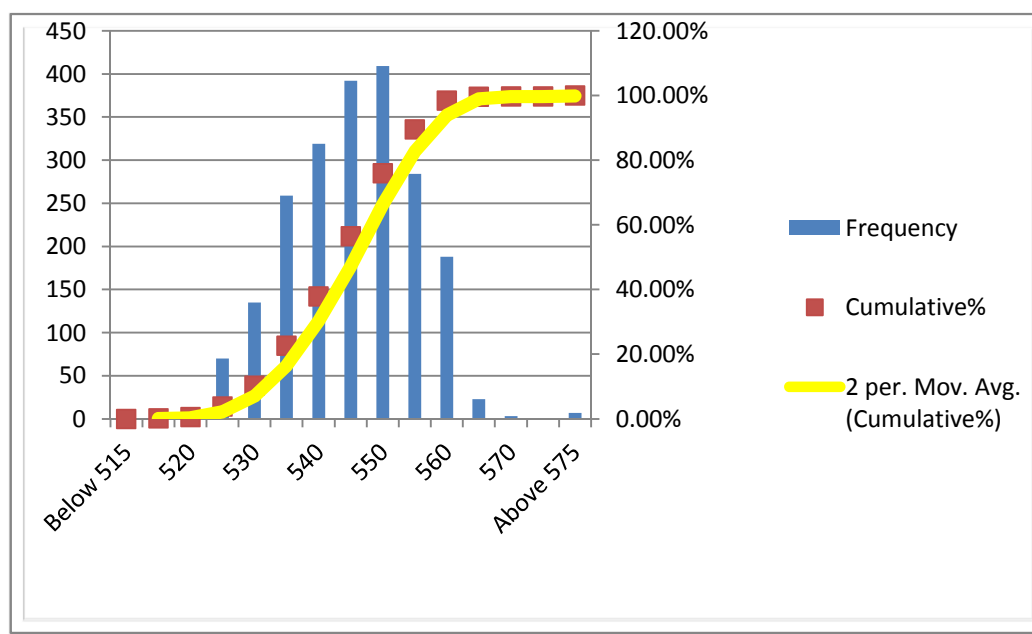


Campaign Length: 28.06.16 to 04.07.16
 Total Production: 12355.466 MT
 Billet Rolled: SML-235 & SAL-251
 Product: Xtreme 500W (4x12 mm)

YIELD STRENGTH	
Mean	545.319
Median	545
Mode	550
Std. Dev.	9.946
Min	515
Max	605
Count	2100

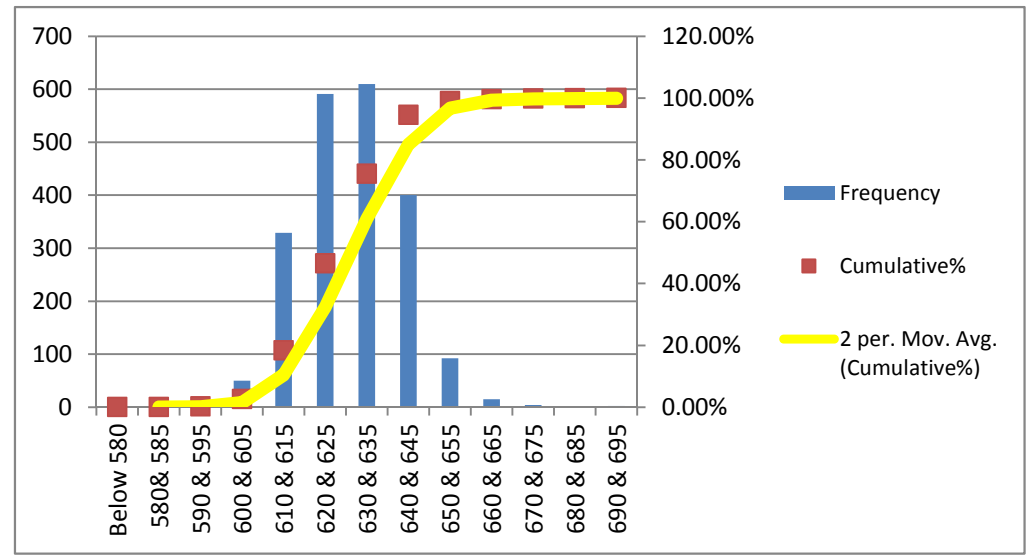
Bin	Frequency	%	Cumulative%
Below 515	0	0.00%	0.00%
515	3	0.14%	0.14%
520	8	0.38%	0.52%
525	70	3.33%	3.86%
530	135	6.43%	10.29%
535	259	12.33%	22.62%
540	319	15.19%	37.81%
545	392	18.67%	56.48%
550	409	19.48%	75.95%
555	284	13.52%	89.48%
560	188	8.95%	98.43%
565	23	1.10%	99.52%
570	3	0.14%	99.67%
575	0	0.00%	99.67%
Above 575	7	0.33%	100.00%
Total	2100		



MINIMUM REQUIREMENTS
 As per ISO 6935-2: 500 Mpa
 As per ASTM A-615: 420 Mpa

ULTIMATE STRENGTH	
Mean	628.929
Median	630
Mode	630
Std. Dev.	12.11
Min	595
Max	695
Count	2100

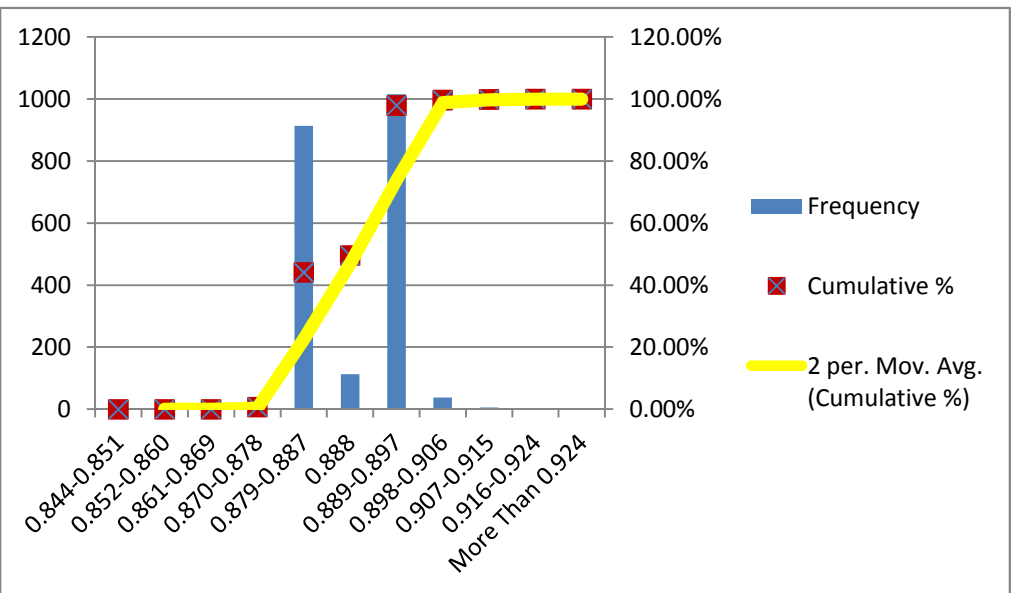
Bin	Frequency	%	Cumulative%
Below 580	0	0.00%	0.00%
580 & 585	0	0.00%	0.00%
590 & 595	6	0.29%	0.29%
600 & 605	50	2.38%	2.67%
610 & 615	329	15.67%	18.33%
620 & 625	591	28.14%	46.48%
630 & 635	610	29.05%	75.52%
640 & 645	400	19.05%	94.57%
650 & 655	92	4.38%	98.95%
660 & 665	15	0.71%	99.67%
670 & 675	4	0.19%	99.86%
680 & 685	1	0.05%	99.90%
690 & 695	2	0.10%	100.00%
700 & 705	0	0.00%	100.00%
710 & 715	0	0.00%	100.00%
Above 715	0	0.00%	100.00%
Total	2100		



MINIMUM REQUIREMENTS
 As per ISO 6935-2: 575 Mpa
 As per ASTM A-615: 620 Mpa

UNIT WEIGHT	
Mean	0.888
Median	0.889
Mode	0.890
Std. Dev.	0.005
Min	0.870
Max	0.921
Count	2100

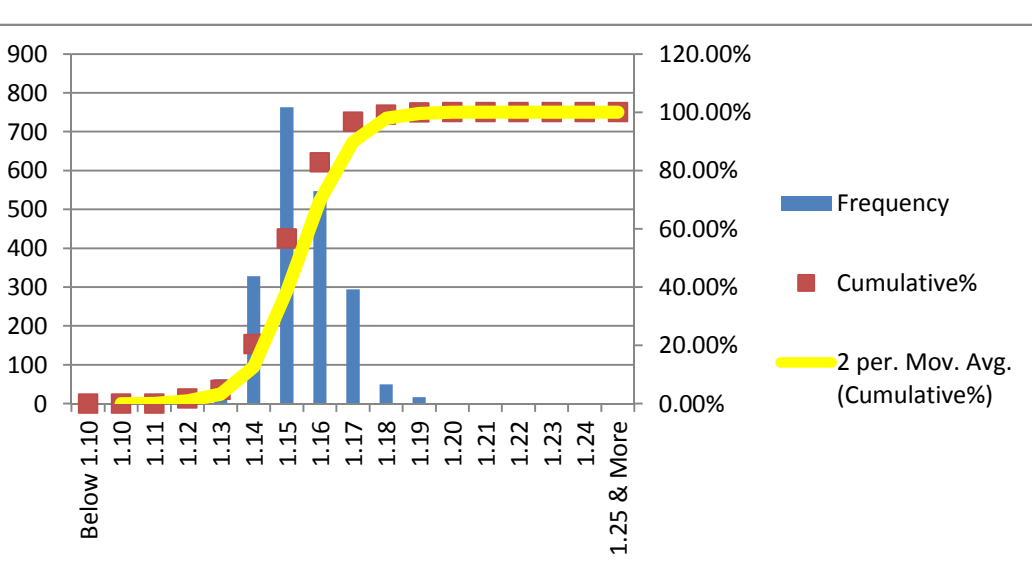
Bin	Frequency	%	Cumulative %
Less Than 0.844	0	0.00%	0.00%
0.844-0.851	0	0.00%	0.00%
0.852-0.860	0	0.00%	0.00%
0.861-0.869	0	0.00%	0.00%
0.870-0.878	14	0.67%	0.67%
0.879-0.887	913	43.48%	44.14%
0.888	113	5.38%	49.52%
0.889-0.897	1016	48.38%	97.90%
0.898-0.906	37	1.76%	99.67%
0.907-0.915	5	0.24%	99.90%
0.916-0.924	2	0.10%	100.00%
More Than 0.924	0	0.00%	100.00%
Total	2100		



MINIMUM REQUIREMENTS
 As per ISO 6935-2: ± 6%
 As per ASTM A-615: -6%

T/Y RATIO	
Mean	1.153
Median	1.15
Mode	1.15
Std. Dev.	0.012
Min	1.11
Max	1.20
Count	2100

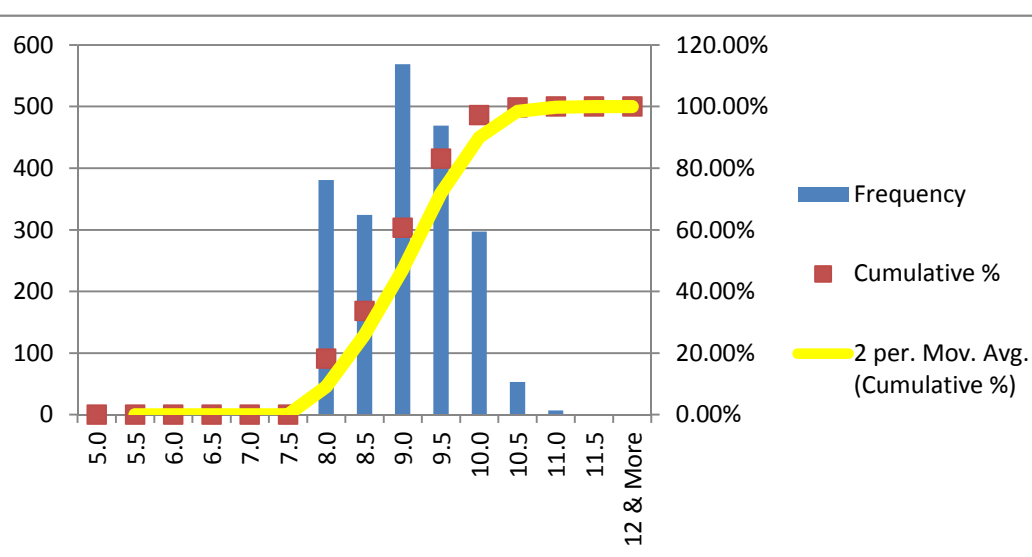
Bin	Frequency	%	Cumulative%
Below 1.10	0	0.00%	0.00%
1.10	0	0.00%	0.00%
1.11	1	0.05%	0.05%
1.12	36	1.71%	1.76%
1.13	63	3.00%	4.76%
1.14	328	15.62%	20.38%
1.15	763	36.33%	56.71%
1.16	547	26.05%	82.76%
1.17	294	14.00%	96.76%
1.18	50	2.38%	99.14%
1.19	17	0.81%	99.95%
1.20	1	0.05%	100.00%
1.21	0	0.00%	100.00%
1.22	0	0.00%	100.00%
1.23	0	0.00%	100.00%
1.24	0	0.00%	100.00%
1.25 & More	0	0.00%	100.00%
Total	2100		



MINIMUM REQUIREMENTS
 As per ISO 6935-2: T/Y: 1.15
 As per ASTM A-615: Not Required

ELN. AT MAX. FORCE (Ag)(GI-200 mm)	
Mean	9.039
Median	9.0
Mode	9.0
Std. Dev.	0.697
Min	8.0
Max	11.0
Count	2100

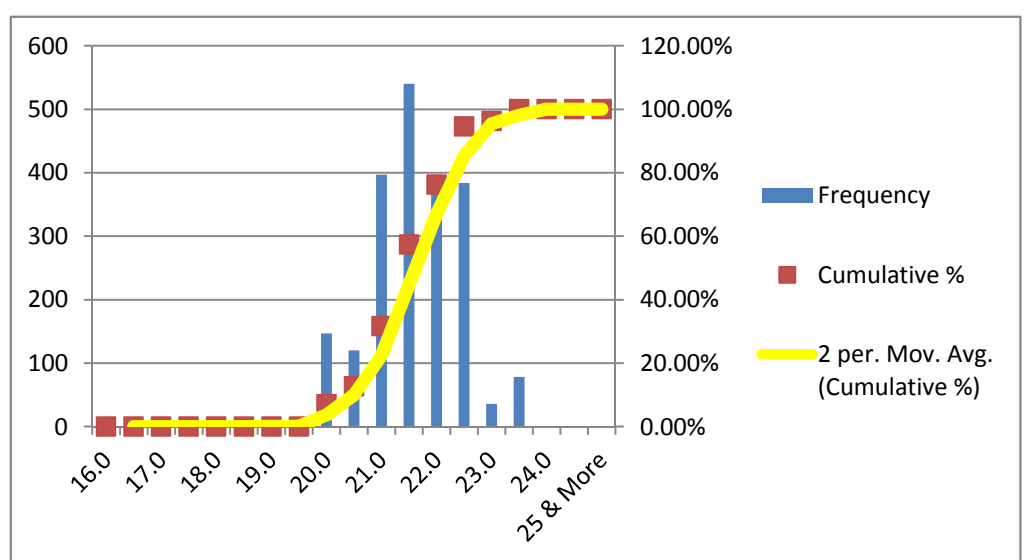
Bin	Frequency	%	Cumulative %
5.0	0	0.00%	0.00%
5.5	0	0.00%	0.00%
6.0	0	0.00%	0.00%
6.5	0	0.00%	0.00%
7.0	0	0.00%	0.00%
7.5	0	0.00%	0.00%
8.0	381	18.14%	18.14%
8.5	324	15.43%	33.57%
9.0	569	27.10%	60.67%
9.5	469	22.33%	83.00%
10.0	297	14.14%	97.14%
10.5	53	2.52%	99.67%
11.0	7	0.33%	100.00%
11.5	0	0.00%	100.00%
12 & More	0	0.00%	100.00%
Total	2100		



MINIMUM REQUIREMENTS
 As per ISO 6935-2: 7%
 As per ASTM A-615: Not Required

ELN. AFTER FRACTURE (A5)(GI-50)	
Mean	21.620
Median	21.5
Mode	21.5
Std. Dev.	0.817
Min	19.0
Max	23.5
Count	2100

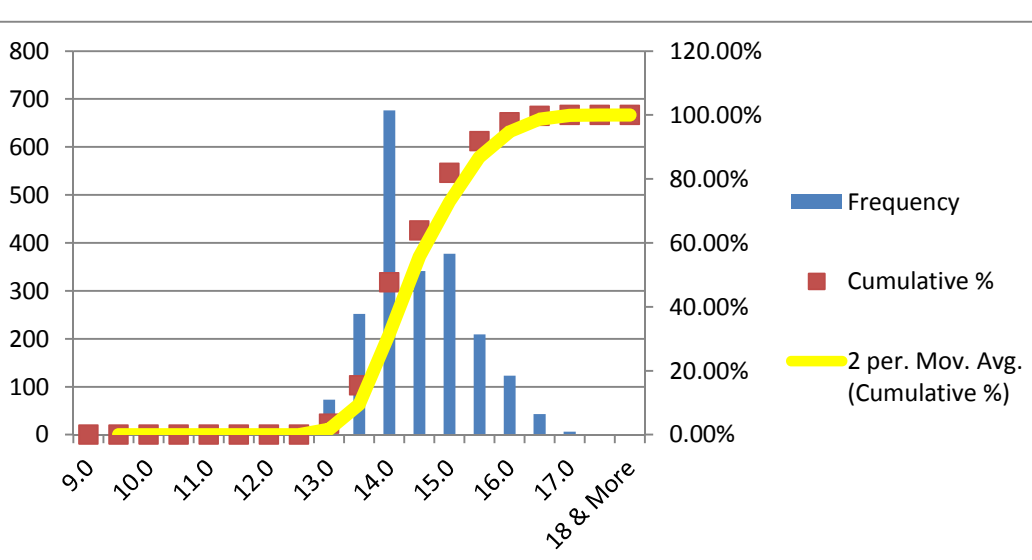
Bin	Frequency	%	Cumulative %
16.0	0	0.00%	0.00%
16.5	0	0.00%	0.00%
17.0	0	0.00%	0.00%
17.5	0	0.00%	0.00%
18.0	0	0.00%	0.00%
18.5	0	0.00%	0.00%
19.0	1	0.05%	0.05%
19.5	0	0.00%	0.05%
20.0	147	7.00%	7.05%
20.5	120	5.71%	12.76%
21.0	397	18.90%	31.67%
21.5	540	25.71%	57.38%
22.0	397	18.90%	76.29%
22.5	384	18.29%	94.57%
23.0	36	1.71%	96.29%
23.5	78	3.71%	100.00%
24.0	0	0.00%	100.00%
24.5	0	0.00%	100.00%
25 & More	0	0.00%	100.00%
Total	2100		



MINIMUM REQUIREMENTS
 As per ISO 6935-2: 14%

ELN. AFTER FRACTURE (A)(GI-203.2 mm)	
Mean	14.492
Median	14.5
Mode	14.0
Std. Dev.	0.809
Min	13.0
Max	17.0
Count	2100

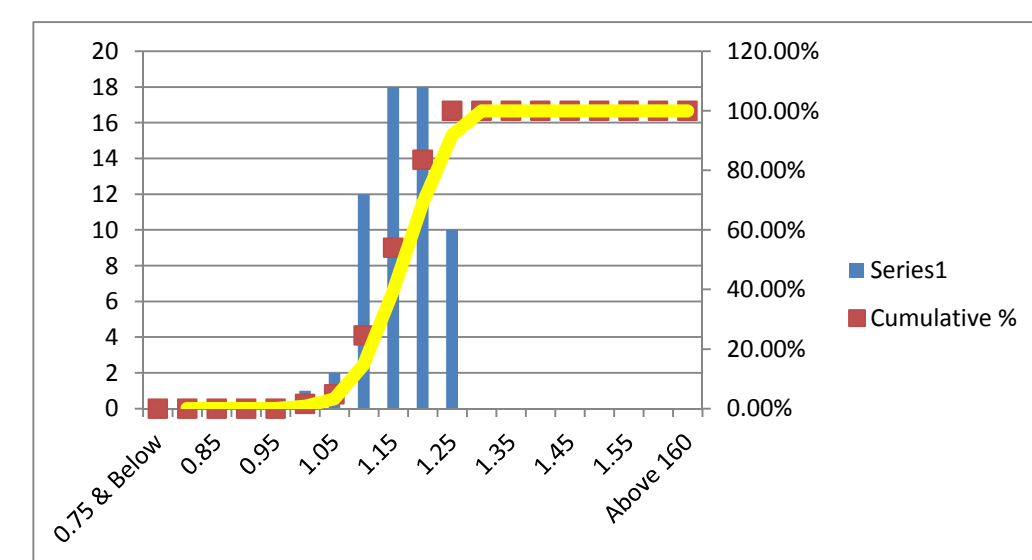
Bin	Frequency	%	Cumulative %
9.0	0	0.00%	0.00%
9.5	0	0.00%	0.00%
10.0	0	0.00%	0.00%
10.5	0	0.00%	0.00%
11.0	0	0.00%	0.00%
11.5	0	0.00%	0.00%
12.0	0	0.00%	0.00%
12.5	0	0.00%	0.00%
13.0	73	3.48%	3.48%
13.5	252	12.00%	15.48%
14.0	676	32.19%	47.67%
14.5	341	16.24%	63.90%
15.0	377	17.95%	81.86%
15.5	209	9.95%	91.81%
16.0	123	5.86%	97.67%
16.5	43	2.05%	99.72%
17.0	6	0.29%	100.00%
17.5	0	0.00%	100.00%
18 & More	0	0.00%	100.00%
Total	2100		



MINIMUM REQUIREMENTS
 As per ASTM A-615: 9%

TRANSVERSE RIB HEIGHT	
Mean	1.129
Median	1.13
Mode	1.2
Std. Dev.	0.057
Min	0.99
Max	1.24
Count	61

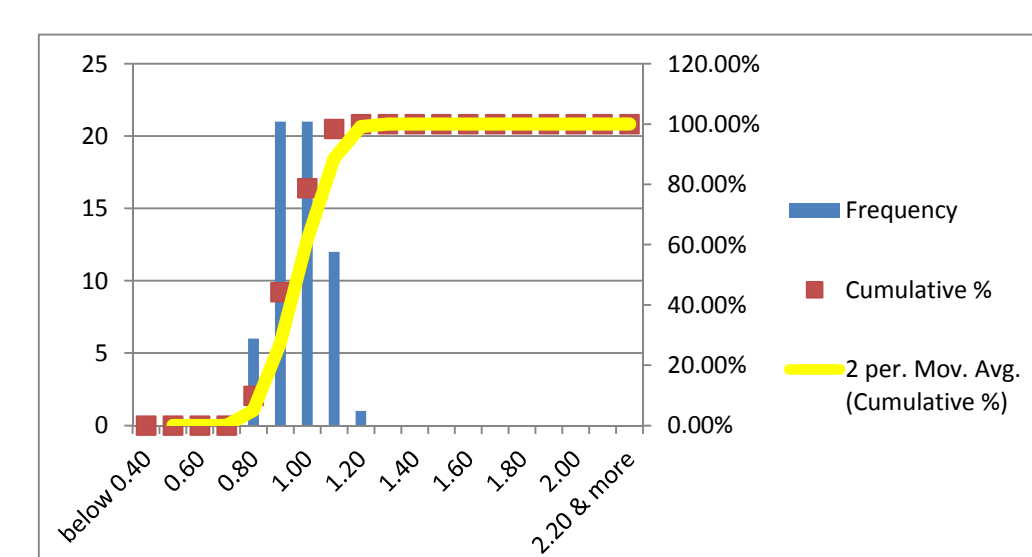
Bin	Frequency	%	Cumulative %
0.75 & Below	0	0.00%	0.00%
0.80	0	0.00%	0.00%
0.85	0	0.00%	0.00%
0.90	0	0.00%	0.00%
0.95	0	0.00%	0.00%
1.00	1	1.64%	1.64%
1.05	2	3.28%	4.92%
1.10	12	19.67%	24.59%
1.15	18	29.51%	54.10%
1.20	18	29.51%	83.61%
1.25	10	16.39%	100.00%
1.30	0	0.00%	100.00%
1.35	0	0.00%	100.00%
1.40	0	0.00%	100.00%
1.45	0	0.00%	100.00%
1.50	0	0.00%	100.00%
1.55	0	0.00%	100.00%
1.60	0	0.00%	100.00%
Above 1.60	0	0.00%	100.00%
Total	61		



MINIMUM REQUIREMENTS
 As per ISO 6935-2: 0.78 mm
 As per ASTM A-615: 0.51 mm

LONGITUDINAL RIB HEIGHT	
Mean	0.913
Median	0.95
Mode	1.0
Std. Dev.	0.097
Min	0.73
Max	1.10
Count	61

Bin	Frequency	%	Cumulative %
below 0.40	0	0.00%	0.00%
0.50	0	0.00%	0.00%
0.60	0	0.00%	0.00%
0.70	0	0.00%	0.00%
0.80	6	9.84%	9.84%
0.90	21	34.43%	44.26%
1.00	21	34.43%	78.69%
1.10	12	19.67%	98.36%
1.20	1	1.64%	100.00%
1.30	0	0.00%	100.00%
1.40	0	0.00%	100.00%
1.50	0	0.00%	100.00%
1.60	0	0.00%	100.00%
1.70	0	0.00%	100.00%
1.80	0	0.00%	100.00%
1.90	0	0.00%	100.00%
2.00	0	0.00%	100.00%
2.10	0	0.00%	100.00%
2.20 & more	0	0.00%	100.00%
Total	61		



MAXIMUM REQUIREMENTS
 As per ISO 6935-2: 1.80 mm

BEND TEST:
 ALL THE SAMPLES IN THIS CAMPAIGN PASSED THE BEND TEST MAINTAINING MANDREL DIA 3D
MINIMUM REQUIREMENTS
 As per ISO 6935-2: 3D
 As per ASTM A-615: 3.5D

REBEND TEST:
 ALL THE SAMPLES IN THIS CAMPAIGN PASSED THE REBEND TEST MAINTAINING MANDREL DIA 4D
MINIMUM REQUIREMENTS
 As per ISO 6935-2: 5D
 As per ASTM A-615: Not Required

Nominal Diameter D	Unit Weight	Yield or Proof Strength R _{eH}	Ultimate Tensile Strength R _m	T/Y Ratio	% Total Elongation at Maximum Force A _{gt}	% Elongation after Fracture A	% Elongation after Fracture A	Height of Transverse Rib	Height of Longitudinal Rib
(mm)	(Kg/m)	(MPa)	(MPa)		GL:200mm	GL: 203.2 mm	GL: 5D	mm	mm
12	0.890	550	630	1.15	9.0	14.0	21.5	1.2	0.8
12	0.891	520	615	1.18	8.5	15.0	23.5		
12	0.891	515	610	1.18	8.0	16.0	20.0		
12	0.892	590	675	1.14	9.0	14.0	20.0		
12	0.890	545	630	1.16	8.5	14.5	21.5		
12	0.892	545	635	1.17	9.0	15.0	20.0		
12	0.890	540	620	1.15	8.5	14.0	21.5		
12	0.899	565	655	1.16	10.0	14.5	21.5		
12	0.890	590	675	1.14	8.0	14.0	21.0		
12	0.888	565	660	1.17	9.5	15.0	21.5		
12	0.893	530	610	1.15	8.0	13.5	21.5		
12	0.886	560	645	1.15	9.5	14.0	23.5		
12	0.890	550	635	1.15	8.0	15.0	21.0		
12	0.894	590	680	1.15	9.5	14.5	20.0		
12	0.893	520	615	1.18	8.0	14.0	21.5		
12	0.890	565	650	1.15	9.5	14.5	21.5		
12	0.892	585	670	1.15	8.0	15.0	22.5		
12	0.892	550	630	1.15	9.5	14.0	22.5		
12	0.891	555	640	1.15	10.0	15.5	21.5		
12	0.890	555	640	1.15	8.0	13.5	23.5		
12	0.891	550	630	1.15	9.5	14.0	21.0		
12	0.892	540	630	1.17	8.0	15.0	22.5		
12	0.890	545	630	1.16	9.5	14.0	21.5		
12	0.893	600	690	1.15	10.0	15.0	21.5		
12	0.894	555	640	1.15	10.0	14.0	23.5		
12	0.890	605	695	1.15	8.0	13.5	20.0		
12	0.887	540	630	1.17	9.5	13.5	23.5		
12	0.889	535	625	1.17	8.0	14.0	23.5		
12	0.889	535	625	1.17	10.0	14.0	22.5		
12	0.890	520	615	1.18	8.0	15.0	21.5		
12	0.887	520	610	1.17	9.5	15.0	21.5		
12	0.889	560	660	1.18	8.5	14.0	22.5		
12	0.891	560	640	1.14	9.5	13.5	21.5		
12	0.891	560	645	1.15	8.0	16.0	22.5		
12	0.892	525	615	1.17	9.5	14.0	22.0		
12	0.888	570	655	1.15	8.0	15.0	22.5		
12	0.887	550	640	1.16	9.5	14.5	21.5		
12	0.889	550	645	1.17	8.0	15.0	20.0		
12	0.885	535	615	1.15	10.0	14.0	23.5		
12	0.887	560	645	1.15	8.0	15.0	21.0		
12	0.890	515	610	1.18	9.5	15.5	21.5		
12	0.892	525	615	1.17	8.0	13.5	22.5		
12	0.891	515	610	1.18	9.5	14.5	20.0		
12	0.890	535	615	1.15	8.0	15.5	22.5		
12	0.891	545	630	1.16	10.0	15.5	23.5		
12	0.890	550	635	1.15	8.0	14.5	21.0		
12	0.892	520	610	1.17	9.5	14.5	22.5		
12	0.890	525	620	1.18	8.0	13.5	20.0		
12	0.888	555	640	1.15	9.5	14.5	23.5		
12	0.885	530	620	1.17	8.0	13.5	22.5		
12	0.886	560	645	1.15	9.5	14.5	20.5		
12	0.887	550	630	1.15	8.0	15.5	22.0		
12	0.890	555	650	1.17	10.0	14.5	23.5		
12	0.891	545	630	1.16	8.0	15.5	22.5		
12	0.887	525	610	1.16	9.5	14.0	21.5		
12	0.888	550	630	1.15	8.5	15.5	22.0		
12	0.889	540	625	1.16	9.5	14.5	21.0		
12	0.888	550	640	1.16	8.0	14.0	22.5		
12	0.898	545	625	1.15	10.0	15.5	22.5		
12	0.890	545	625	1.15	10.0	14.0	22.0		
12	0.891	545	625	1.15	8.0	15.5	22.0		
12	0.891	540	625	1.16	9.5	14.0	21.5		
12	0.892	530	615	1.16	8.0	13.5	22.0		
12	0.893	535	630	1.18	9.5	14.0	21.0		
12	0.906	550	640	1.16	8.5	14.5	21.5		
12	0.910	545	635	1.17	8.0	15.5	22.5		
12	0.907	550	630	1.15	9.0	14.0	21.5		
12	0.906	555	640	1.15	9.5	14.0	21.0		
12	0.891	550	630	1.15	8.5	15.5	22.5		
12	0.889	555	640	1.15	10.0	15.0	22.0		
12	0.884	555	640	1.15	9.0	14.0	21.0		

0

1.12

0.73

12	0.886	560	645	1.15	9.5	13.5	20.5	1.12	0.98
12	0.893	555	640	1.15	8.0	14.5	21.5		
12	0.890	555	635	1.14	8.5	15.0	22.0		
12	0.885	555	640	1.15	9.0	14.0	21.0		
12	0.888	540	620	1.15	9.0	15.5	22.5		
12	0.894	545	625	1.15	10.0	16.0	23.0		
12	0.892	535	620	1.16	8.5	16.5	23.5		
12	0.887	555	645	1.16	9.0	14.5	21.5		
12	0.890	550	630	1.15	9.5	14.0	21.0		
12	0.897	535	620	1.16	10.0	15.0	22.0		
12	0.892	530	615	1.16	10.5	15.5	22.5		
12	0.888	550	635	1.15	9.5	14.5	21.5		
12	0.891	555	640	1.15	9.0	14.0	21.0		
12	0.899	560	645	1.15	8.5	13.5	20.5		
12	0.894	545	625	1.15	8.0	14.0	21.0		
12	0.889	535	620	1.16	8.0	14.5	21.5		
12	0.893	560	645	1.15	8.5	14.0	21.0		
12	0.901	560	645	1.15	9.0	15.0	22.0		
12	0.893	535	620	1.16	9.0	15.0	22.0		
12	0.887	540	620	1.15	9.5	14.5	21.5		
12	0.892	550	630	1.15	10.0	15.0	22.0		
12	0.894	555	640	1.15	10.5	14.0	21.0		
12	0.889	530	615	1.16	10.0	14.0	21.0		
12	0.886	555	640	1.15	8.0	14.5	21.0		
12	0.890	540	620	1.15	8.5	15.0	21.5		
12	0.896	530	615	1.16	8.0	15.5	22.5		
12	0.891	540	625	1.16	9.0	14.0	21.0		
12	0.886	550	635	1.15	9.5	14.0	21.0		
12	0.891	545	625	1.15	9.5	14.5	22.0		
12	0.898	535	620	1.16	8.0	15.0	22.0		
12	0.893	545	625	1.15	8.0	15.5	22.5		
12	0.887	555	640	1.15	8.5	14.0	21.0		
12	0.893	545	625	1.15	9.5	15.5	22.5		
12	0.899	550	630	1.15	9.5	15.0	22.0		
12	0.895	545	630	1.16	9.0	14.0	21.0		
12	0.888	535	615	1.15	9.0	16.0	22.5		
12	0.894	570	655	1.15	10.0	14.0	21.0		
12	0.896	535	620	1.16	10.5	15.5	22.5		
12	0.891	540	630	1.17	10.0	14.0	21.0		
12	0.886	550	635	1.15	10.0	14.5	21.5		
12	0.891	555	640	1.15	8.5	15.5	22.5		
12	0.898	550	635	1.15	8.0	14.5	21.5		
12	0.893	520	615	1.18	8.0	16.0	23.5		
12	0.887	520	610	1.17	9.0	14.0	21.0		
12	0.893	555	640	1.15	9.5	14.5	21.5		
12	0.899	545	630	1.16	10.0	14.0	21.5		
12	0.895	545	630	1.16	9.5	13.0	20.0		
12	0.888	525	615	1.17	9.5	14.0	21.0		
12	0.895	565	650	1.15	10.0	14.5	21.0		
12	0.901	555	640	1.15	9.5	14.5	21.5		
12	0.896	565	650	1.15	9.0	16.0	23.5		
12	0.890	560	645	1.15	10.0	14.0	21.0		
12	0.896	550	630	1.15	10.5	13.5	20.0		
12	0.897	550	635	1.15	9.5	14.5	21.5		
12	0.882	560	645	1.15	9.0	15.5	22.5		
12	0.893	565	645	1.14	9.0	15.5	22.5		
12	0.890	585	670	1.15	8.5	14.5	21.5		
12	0.887	550	630	1.15	8.0	14.0	21.5		
12	0.884	555	640	1.15	8.0	16.0	23.5		
12	0.886	555	645	1.16	9.0	14.0	21.0		
12	0.881	555	645	1.16	9.5	15.5	22.5		
12	0.885	540	625	1.16	10.0	14.5	21.5		
12	0.891	545	625	1.15	10.5	16.0	23.5		
12	0.887	555	640	1.15	9.0	13.5	20.0		
12	0.886	555	640	1.15	9.0	16.0	23.5		
12	0.884	555	640	1.15	9.5	13.5	22.5		
12	0.892	560	645	1.15	8.0	16.5	23.5		
12	0.883	550	630	1.15	8.5	14.5	21.5		
12	0.887	535	625	1.17	10.0	14.0	21.5		
12	0.889	525	615	1.17	8.5	14.5	21.5		
12	0.895	550	635	1.15	9.5	15.0	22.5		
12	0.889	535	615	1.15	9.0	14.5	21.5		
12	0.891	560	640	1.14	9.0	14.5	21.5		
12	0.893	550	635	1.15	9.5	15.0	21.5		
12	0.880	550	630	1.15	8.0	13.0	20.0		
12	0.884	535	620	1.16	8.0	15.5	23.5		

12	0.881	560	645	1.15	8.0	14.0	21.0	1.14	0.79
12	0.886	525	610	1.16	8.5	15.5	22.5		
12	0.883	525	610	1.16	9.0	14.0	21.0		
12	0.885	550	630	1.15	9.5	16.0	22.5		
12	0.884	535	615	1.15	10.0	13.0	20.0		
12	0.887	545	625	1.15	10.5	15.5	22.5		
12	0.884	550	635	1.15	11.0	16.5	23.5		
12	0.882	550	630	1.15	9.0	14.0	21.0		
12	0.884	525	610	1.16	10.5	15.5	22.5		
12	0.886	555	640	1.15	8.0	13.5	20.0		
12	0.887	530	630	1.19	11.0	16.0	23.5		
12	0.886	560	645	1.15	10.5	15.5	22.5		
12	0.881	560	645	1.15	8.0	13.0	20.0		
12	0.883	545	625	1.15	8.5	16.5	23.5		
12	0.891	545	625	1.15	10.5	15.5	22.5		
12	0.890	550	630	1.15	9.5	14.5	21.5		
12	0.891	550	630	1.15	9.0	14.0	22.0		
12	0.887	540	620	1.15	9.0	14.5	21.0		
12	0.887	550	640	1.16	9.5	15.5	22.5		
12	0.881	545	625	1.15	10.0	14.0	21.5		
12	0.885	545	625	1.15	8.0	16.0	22.5		
12	0.886	540	625	1.16	8.5	13.5	22.0		
12	0.884	535	620	1.16	8.5	14.0	22.0		
12	0.887	535	620	1.16	10.5	15.5	22.5		
12	0.886	530	615	1.16	10.0	14.5	22.0		
12	0.882	535	615	1.15	8.0	13.0	20.0		
12	0.889	530	610	1.15	8.5	14.0	22.5		
12	0.886	540	625	1.16	8.5	14.5	21.5		
12	0.883	540	620	1.15	9.0	15.0	22.0		
12	0.884	545	630	1.16	9.5	14.5	21.5		
12	0.891	545	625	1.15	10.0	14.0	21.5		
12	0.887	545	640	1.17	10.5	15.0	22.0		
12	0.884	550	635	1.15	9.5	14.5	21.5		
12	0.884	545	630	1.16	9.0	13.0	20.0		
12	0.893	545	630	1.16	9.0	15.0	22.0		
12	0.888	535	615	1.15	10.5	15.5	22.5		
12	0.885	535	625	1.17	10.0	15.0	22.0		
12	0.886	545	630	1.16	9.5	14.0	21.0		
12	0.883	535	620	1.16	9.5	14.5	21.5		
12	0.881	540	630	1.17	10.0	15.0	22.0		
12	0.884	535	625	1.17	10.5	15.5	22.5		
12	0.896	550	620	1.13	9.0	15.0	23.5		
12	0.896	560	630	1.13	9.0	14.0	23.5		
12	0.887	540	615	1.14	9.0	14.0	21.5		
12	0.888	550	625	1.14	9.5	13.0	21.0		
12	0.893	545	620	1.14	9.5	13.5	22.5		
12	0.892	560	635	1.13	9.5	13.5	23.5		
12	0.882	545	620	1.14	9.0	13.5	21.0		
12	0.884	535	615	1.15	9.0	13.0	21.5		
12	0.892	545	620	1.14	9.0	13.0	21.0		
12	0.890	550	625	1.14	10.0	14.0	21.0		
12	0.880	535	615	1.15	9.0	14.0	21.0		
12	0.886	540	625	1.16	9.0	14.0	21.5		
12	0.889	535	615	1.15	9.0	14.0	21.5		
12	0.887	545	615	1.13	10.0	15.0	21.0		
12	0.884	535	615	1.15	9.0	13.0	21.5		
12	0.885	545	615	1.13	9.0	13.0	23.5		
12	0.892	555	615	1.11	9.0	13.0	21.0		
12	0.890	540	615	1.14	9.5	13.5	23.5		
12	0.880	550	625	1.14	8.0	13.5	21.5		
12	0.884	545	620	1.14	8.5	13.0	21.0		
12	0.895	540	620	1.15	8.5	13.5	21.5		
12	0.889	550	620	1.13	8.5	13.5	21.0		
12	0.886	545	625	1.15	8.5	15.0	21.5		
12	0.884	550	625	1.14	9.0	14.0	21.0		
12	0.895	535	610	1.14	9.0	14.0	21.0		
12	0.889	535	615	1.15	9.0	14.0	21.0		
12	0.886	540	620	1.15	9.5	14.0	21.5		
12	0.884	525	615	1.17	9.5	13.5	20.0		
12	0.895	545	625	1.15	9.5	13.5	22.0		
12	0.889	555	635	1.14	9.0	13.5	21.0		
12	0.886	530	610	1.15	9.0	14.0	20.5		
12	0.888	535	625	1.17	9.0	14.0	21.5		
12	0.894	550	635	1.15	8.5	14.0	23.5		
12	0.890	545	630	1.16	8.5	13.0	22.5		
12	0.885	550	630	1.15	8.5	13.0	21.5		

1.14

0.79

1.17

0.90

1.15

0.89

12	0.886	550	630	1.15	8.5	13.0	22.0	1.05	0.98
12	0.894	540	620	1.15	9.0	13.0	21.0		
12	0.890	550	640	1.16	9.0	13.5	21.5		
12	0.885	545	625	1.15	9.0	13.5	21.5		
12	0.886	545	625	1.15	9.0	13.5	22.5		
12	0.892	540	625	1.16	9.0	14.0	22.0		
12	0.888	535	620	1.16	9.0	14.0	22.0		
12	0.884	535	620	1.16	9.5	14.0	22.5		
12	0.886	530	615	1.16	9.5	14.5	22.0		
12	0.887	535	615	1.15	9.5	14.5	20.0		
12	0.886	530	610	1.15	9.5	14.5	22.5		
12	0.884	540	625	1.16	9.0	15.0	21.5		
12	0.888	540	620	1.15	9.0	14.5	22.0		
12	0.880	545	630	1.16	9.0	14.5	21.5		
12	0.883	545	625	1.15	8.5	13.0	21.5		
12	0.886	545	640	1.17	8.5	13.0	22.0		
12	0.878	550	615	1.12	8.5	13.0	21.5		
12	0.880	545	630	1.16	9.0	13.5	20.0		
12	0.883	545	630	1.16	9.0	13.5	22.0		
12	0.883	535	615	1.15	9.0	13.5	22.5		
12	0.882	535	625	1.17	8.0	14.5	22.0		
12	0.884	555	630	1.14	9.0	14.5	21.0		
12	0.884	535	620	1.16	9.0	14.5	21.5		
12	0.886	540	630	1.17	10.0	14.0	22.0		
12	0.886	545	610	1.12	9.0	14.0	22.5		
12	0.885	530	615	1.16	9.0	14.0	22.5		
12	0.886	535	625	1.17	9.0	13.0	22.0		
12	0.888	525	610	1.16	10.0	13.0	22.5		
12	0.884	530	620	1.17	8.5	13.0	21.0		
12	0.886	545	630	1.16	8.5	14.0	23.5		
12	0.887	530	610	1.15	8.5	13.5	22.5		
12	0.890	545	625	1.15	8.5	13.5	22.0		
12	0.885	540	625	1.16	9.0	14.5	22.0		
12	0.887	525	605	1.15	9.0	14.0	22.5		
12	0.887	535	615	1.15	9.0	14.0	22.5		
12	0.886	540	625	1.16	9.5	14.0	22.0		
12	0.889	540	620	1.15	9.5	13.5	22.5		
12	0.886	535	620	1.16	9.5	13.5	22.5		
12	0.885	540	635	1.18	9.0	13.5	21.5		
12	0.886	535	620	1.16	9.0	14.0	22.5		
12	0.888	540	620	1.15	9.0	14.0	22.0		
12	0.884	545	620	1.14	9.5	14.0	21.5		
12	0.886	550	635	1.15	9.5	14.5	22.0		
12	0.887	530	610	1.15	9.0	14.5	23.5		
12	0.890	555	625	1.13	9.0	15.0	21.0		
12	0.888	550	630	1.15	9.0	15.0	21.0		
12	0.888	555	635	1.14	9.0	14.0	21.0		
12	0.884	550	635	1.15	9.5	14.0	21.0		
12	0.890	555	645	1.16	9.5	14.0	21.5		
12	0.888	550	635	1.15	9.0	14.0	21.0		
12	0.888	560	645	1.15	9.5	13.0	20.0		
12	0.884	545	620	1.14	9.5	13.0	20.5		
12	0.887	560	640	1.14	9.0	13.0	21.0		
12	0.893	560	635	1.13	9.0	13.5	20.5		
12	0.896	540	615	1.14	9.0	13.5	21.5		
12	0.887	550	635	1.15	9.5	13.5	22.0		
12	0.892	560	640	1.14	9.5	13.5	21.0		
12	0.892	560	665	1.19	9.0	13.0	20.5		
12	0.894	560	645	1.15	9.0	14.0	21.0		
12	0.888	550	635	1.15	9.0	14.0	21.5		
12	0.890	540	615	1.14	9.5	14.0	21.0		
12	0.890	555	635	1.14	9.0	15.0	21.5		
12	0.892	560	650	1.16	9.0	14.0	21.5		
12	0.884	550	635	1.15	9.0	14.0	22.0		
12	0.887	540	625	1.16	9.5	13.5	22.5		
12	0.888	550	630	1.15	9.5	13.5	21.0		
12	0.888	555	640	1.15	9.5	14.5	21.0		
12	0.884	550	630	1.15	8.5	14.0	21.0		
12	0.887	530	635	1.20	8.5	14.0	21.5		
12	0.893	550	630	1.15	8.5	13.0	22.0		
12	0.896	535	625	1.17	8.0	14.0	22.5		
12	0.887	550	630	1.15	8.0	13.5	21.0		
12	0.892	550	630	1.15	8.0	13.5	21.5		
12	0.892	545	625	1.15	9.5	14.0	22.0		
12	0.894	555	630	1.14	9.5	13.0	21.0		
12	0.888	550	625	1.14	9.5	13.0	20.0		

12	0.890	560	640	1.14	9.0	13.5	21.0	0.99	0.97
12	0.890	535	620	1.16	9.0	13.5	21.5		
12	0.892	555	640	1.15	10.0	13.5	21.0		
12	0.884	550	625	1.14	9.0	13.5	20.5		
12	0.887	555	625	1.13	9.0	14.0	21.0		
12	0.885	550	630	1.15	9.0	14.0	21.5		
12	0.881	545	625	1.15	9.5	13.0	22.0		
12	0.880	550	620	1.13	9.0	13.5	22.5		
12	0.881	555	635	1.14	9.0	13.5	21.0		
12	0.887	545	640	1.17	10.0	14.0	22.5		
12	0.884	550	640	1.16	8.0	13.5	21.0		
12	0.881	550	640	1.16	9.5	14.0	22.5		
12	0.887	525	615	1.17	8.0	15.5	21.0		
12	0.883	525	615	1.17	9.5	15.5	23.0		
12	0.885	540	615	1.14	8.0	14.0	23.5		
12	0.880	540	630	1.17	9.5	15.0	21.5		
12	0.889	550	645	1.17	8.0	14.5	21.5		
12	0.887	550	640	1.16	9.5	14.0	21.5		
12	0.882	535	620	1.16	8.0	15.0	21.5		
12	0.889	525	615	1.17	9.5	14.0	21.5		
12	0.890	550	645	1.17	10.0	13.5	22.5		
12	0.886	545	610	1.12	8.0	14.0	21.5		
12	0.882	530	620	1.17	9.0	15.5	21.5		
12	0.880	545	615	1.13	10.0	14.0	22.5		
12	0.888	535	625	1.17	8.0	15.5	20.0		
12	0.888	550	620	1.13	9.5	14.0	21.5		
12	0.887	540	625	1.16	10.0	13.5	20.0		
12	0.889	545	615	1.13	8.0	14.0	21.5		
12	0.890	540	625	1.16	10.0	15.5	21.5		
12	0.896	540	630	1.17	8.0	14.0	22.5		
12	0.893	545	615	1.13	9.5	13.5	23.5		
12	0.885	545	640	1.17	8.0	14.0	21.5		
12	0.882	560	635	1.13	8.5	15.0	20.0		
12	0.883	560	625	1.12	9.5	13.5	21.5		
12	0.880	525	615	1.17	8.5	14.0	21.5		
12	0.890	555	660	1.19	8.0	15.5	21.5		
12	0.893	555	650	1.17	9.5	14.0	20.5		
12	0.897	550	625	1.14	9.0	13.5	21.5		
12	0.894	550	615	1.12	8.0	14.0	21.5		
12	0.896	540	630	1.17	9.5	15.5	21.5		
12	0.890	545	620	1.14	8.0	14.0	21.5		
12	0.895	525	615	1.17	9.5	13.5	22.5		
12	0.891	545	615	1.13	8.0	14.0	21.0		
12	0.899	540	620	1.15	9.5	15.0	21.5		
12	0.892	550	625	1.14	8.0	14.0	22.5		
12	0.892	555	620	1.12	9.5	13.5	21.0		
12	0.890	555	625	1.13	8.0	14.0	22.5		
12	0.890	550	635	1.15	9.5	15.0	21.5		
12	0.897	545	635	1.17	8.0	14.0	22.5		
12	0.901	535	625	1.17	9.5	13.5	21.5		
12	0.903	540	625	1.16	8.0	15.0	21.0		
12	0.890	550	630	1.15	9.5	14.0	20.5		
12	0.892	555	620	1.12	8.0	15.5	22.0		
12	0.892	560	640	1.14	10.0	14.0	21.5		
12	0.897	555	640	1.15	8.0	13.5	21.5		
12	0.893	535	625	1.17	9.5	14.0	21.0		
12	0.890	525	615	1.17	8.0	15.5	20.0		
12	0.897	530	615	1.16	9.5	14.0	20.0		
12	0.883	545	620	1.14	8.0	15.5	23.5		
12	0.892	535	620	1.16	10.0	14.0	21.0		
12	0.891	540	630	1.17	8.0	14.0	20.0		
12	0.896	535	625	1.17	9.5	13.5	22.5		
12	0.894	525	615	1.17	8.0	13.5	22.5		
12	0.893	535	625	1.17	9.5	15.0	22.5		
12	0.892	550	640	1.16	8.0	14.0	21.5		
12	0.897	550	630	1.15	10.0	15.0	21.5		
12	0.888	540	630	1.17	8.0	14.0	21.5		
12	0.885	540	630	1.17	9.5	15.5	21.5		
12	0.886	550	640	1.16	8.0	13.5	21.5		
12	0.884	555	635	1.14	9.5	14.0	20.0		
12	0.883	545	635	1.17	8.0	15.0	22.0		
12	0.890	550	640	1.16	9.5	14.5	22.0		
12	0.891	550	630	1.15	8.0	14.0	22.5		
12	0.893	565	635	1.12	9.0	13.5	21.5		
12	0.894	560	625	1.12	8.0	14.0	21.5		
12	0.896	550	625	1.14	10.0	15.0	21.5		

0.99

0.97

1.08

0.81

12	0.892	550	630	1.15	8.0	14.0	21.0	1.17	0.78
12	0.893	530	615	1.16	9.5	15.0	22.5		
12	0.890	560	635	1.13	8.0	14.0	22.5		
12	0.891	535	630	1.18	9.5	13.5	20.0		
12	0.897	545	625	1.15	8.0	14.0	21.5		
12	0.896	525	610	1.16	9.5	15.0	20.0		
12	0.893	540	625	1.16	8.0	14.0	20.0		
12	0.894	560	630	1.13	9.5	13.5	23.0		
12	0.890	545	630	1.16	8.0	14.0	23.5		
12	0.887	540	625	1.16	9.5	15.5	21.5		
12	0.886	545	630	1.16	8.0	14.0	22.5		
12	0.883	540	630	1.17	9.5	13.5	21.5		
12	0.894	540	630	1.17	8.0	14.0	21.0		
12	0.897	560	630	1.13	10.0	15.5	21.0		
12	0.890	545	630	1.16	8.0	14.0	22.5		
12	0.893	545	640	1.17	9.5	15.0	22.5		
12	0.891	560	635	1.13	8.0	14.0	21.5		
12	0.894	560	625	1.12	9.5	13.5	22.5		
12	0.896	545	640	1.17	10.0	14.0	20.0		
12	0.888	540	630	1.17	10.0	15.0	22.5		
12	0.885	535	620	1.16	8.0	14.0	23.5		
12	0.886	560	630	1.13	9.5	13.5	22.5		
12	0.883	555	645	1.16	8.0	14.0	21.5		
12	0.882	540	630	1.17	9.5	15.0	22.5		
12	0.887	560	630	1.13	8.0	14.0	21.0		
12	0.889	540	630	1.17	9.5	13.5	21.5		
12	0.885	555	630	1.14	8.0	14.0	21.5		
12	0.882	540	620	1.15	9.5	15.0	21.5		
12	0.881	545	630	1.16	8.0	14.0	21.5		
12	0.889	555	640	1.15	9.5	13.5	21.5		
12	0.883	560	640	1.14	8.0	14.0	22.5		
12	0.886	555	650	1.17	10.0	15.0	22.5		
12	0.889	550	645	1.17	8.0	14.0	22.5		
12	0.890	560	645	1.15	9.5	13.5	20.0		
12	0.887	560	650	1.16	8.0	14.0	20.0		
12	0.885	555	635	1.14	9.5	13.5	21.5		
12	0.881	550	645	1.17	8.0	14.0	23.5		
12	0.886	540	630	1.17	9.5	15.0	21.5		
12	0.890	550	630	1.15	10.0	15.5	22.5		
12	0.896	560	650	1.16	8.0	14.0	23.5		
12	0.893	560	635	1.13	9.5	15.5	22.5		
12	0.894	550	635	1.15	8.0	14.0	22.5		
12	0.891	550	645	1.17	9.5	14.0	21.0		
12	0.893	545	640	1.17	8.0	15.0	20.0		
12	0.890	540	630	1.17	9.5	14.0	21.0		
12	0.885	560	635	1.13	8.0	13.5	22.5		
12	0.882	555	645	1.16	9.5	14.0	23.5		
12	0.879	550	640	1.16	8.0	15.0	22.0		
12	0.880	560	640	1.14	10.0	13.5	21.0		
12	0.887	560	640	1.14	8.5	14.0	21.0		
12	0.884	545	625	1.15	9.0	14.5	21.5		
12	0.881	540	625	1.16	8.5	13.5	21.0		
12	0.887	550	630	1.15	9.5	15.0	22.0		
12	0.881	535	620	1.16	9.0	14.5	21.5		
12	0.879	555	635	1.14	8.5	13.5	21.0		
12	0.880	535	620	1.16	10.0	15.5	22.5		
12	0.887	530	615	1.16	8.0	13.0	20.5		
12	0.890	530	615	1.16	8.5	14.0	21.0		
12	0.896	530	605	1.14	8.0	13.5	20.0		
12	0.889	530	605	1.14	8.5	13.0	20.5		
12	0.894	545	640	1.17	9.0	14.5	21.5		
12	0.898	540	630	1.17	10.0	16.5	23.5		
12	0.890	535	625	1.17	10.0	15.5	22.5		
12	0.895	530	610	1.15	8.5	13.5	20.5		
12	0.891	540	615	1.14	9.0	14.5	21.5		
12	0.889	540	615	1.14	9.5	15.0	22.0		
12	0.892	550	630	1.15	9.0	14.5	21.5		
12	0.892	525	595	1.13	8.5	13.5	20.5		
12	0.890	525	595	1.13	8.0	13.0	20.0		
12	0.897	530	595	1.12	8.0	13.0	20.0		
12	0.892	525	605	1.15	8.5	13.5	20.5		
12	0.894	535	620	1.16	9.0	14.5	21.5		
12	0.893	530	605	1.14	8.5	14.0	21.0		
12	0.890	535	610	1.14	9.0	14.5	21.5		
12	0.893	530	600	1.13	8.5	13.0	20.5		
12	0.896	565	645	1.14	9.0	14.5	21.5		

1.24

0.82

12	0.894	555	635	1.14	8.5	13.5	21.0	1.13	1.04
12	0.894	540	625	1.16	10.5	16.0	23.5		
12	0.888	555	635	1.14	9.5	15.0	22.0		
12	0.893	545	630	1.16	10.0	15.5	22.5		
12	0.894	560	650	1.16	8.5	14.0	21.0		
12	0.894	560	655	1.17	9.0	14.5	21.5		
12	0.888	555	655	1.18	9.0	14.5	21.5		
12	0.893	560	655	1.17	8.5	15.0	21.5		
12	0.890	545	625	1.15	9.0	15.5	22.5		
12	0.896	530	610	1.15	8.5	14.0	21.0		
12	0.898	535	615	1.15	8.0	13.5	21.0		
12	0.892	540	640	1.19	10.0	16.0	23.0		
12	0.892	530	625	1.18	9.5	15.5	22.0		
12	0.891	540	630	1.17	10.0	16.0	23.0		
12	0.890	540	630	1.17	10.0	15.5	22.5		
12	0.893	560	640	1.14	9.0	14.5	21.5		
12	0.893	535	615	1.15	9.0	14.0	21.5		
12	0.896	540	625	1.16	9.5	15.0	22.0		
12	0.892	545	630	1.16	10.0	16.0	23.5		
12	0.891	555	650	1.17	8.5	14.0	21.0		
12	0.890	550	640	1.16	9.5	15.0	22.0		
12	0.896	545	630	1.16	10.0	16.0	23.0		
12	0.892	545	635	1.17	10.0	15.5	22.5		
12	0.894	540	620	1.15	9.5	16.0	22.5		
12	0.894	540	620	1.15	9.0	14.5	21.5		
12	0.894	540	630	1.17	9.0	14.0	21.5		
12	0.890	570	650	1.14	9.0	13.5	21.0		
12	0.887	535	620	1.16	8.5	13.5	21.0		
12	0.890	560	645	1.15	8.5	14.5	21.5		
12	0.891	550	640	1.16	9.5	15.0	22.0		
12	0.889	560	650	1.16	8.5	14.0	21.0		
12	0.888	565	645	1.14	8.0	13.5	20.0		
12	0.888	560	630	1.13	9.0	14.5	21.5		
12	0.893	540	610	1.13	8.5	14.0	21.0		
12	0.891	540	620	1.15	9.0	14.5	21.5		
12	0.890	555	640	1.15	9.0	15.0	21.5		
12	0.910	555	645	1.16	8.5	14.0	21.0		
12	0.892	535	610	1.14	10.0	15.5	22.5		
12	0.885	560	645	1.15	8.5	13.5	20.5		
12	0.895	540	620	1.15	8.0	14.0	19.0		
12	0.894	540	610	1.13	10.0	15.5	22.5		
12	0.892	540	615	1.14	8.5	14.0	21.0		
12	0.888	560	635	1.13	9.0	14.5	21.5		
12	0.890	545	625	1.15	9.0	15.0	21.5		
12	0.891	555	635	1.14	8.5	13.5	21.0		
12	0.895	535	610	1.14	8.0	14.0	20.5		
12	0.891	545	620	1.14	9.0	14.5	21.5		
12	0.894	535	605	1.13	9.0	14.5	21.5		
12	0.895	530	595	1.12	8.5	13.5	21.0		
12	0.900	535	605	1.13	9.0	15.0	21.5		
12	0.888	540	620	1.15	8.5	14.0	21.0		
12	0.894	540	620	1.15	8.5	14.0	21.0		
12	0.896	530	610	1.15	10.0	15.5	22.5		
12	0.892	550	630	1.15	9.5	15.0	22.0		
12	0.885	545	610	1.12	10.0	16.0	23.5		
12	0.889	555	635	1.14	9.0	14.5	21.5		
12	0.890	525	600	1.14	8.0	13.0	20.0		
12	0.892	530	600	1.13	8.5	13.5	20.5		
12	0.896	540	620	1.15	8.0	13.0	20.0		
12	0.889	530	615	1.16	10.0	16.5	23.5		
12	0.890	535	620	1.16	9.0	14.5	21.5		
12	0.894	535	620	1.16	8.5	15.0	21.5		
12	0.887	550	635	1.15	9.5	15.0	22.0		
12	0.890	530	605	1.14	10.0	16.0	23.5		
12	0.892	555	625	1.13	8.5	14.0	21.0		
12	0.889	550	630	1.15	8.5	13.5	21.0		
12	0.891	555	635	1.14	8.5	14.0	21.0		
12	0.894	550	630	1.15	9.0	13.5	21.0		
12	0.892	555	645	1.16	9.0	14.5	21.5		
12	0.893	550	625	1.14	8.5	13.5	21.0		
12	0.889	560	640	1.14	8.0	13.0	20.0		
12	0.890	545	620	1.14	8.5	13.5	20.5		
12	0.892	565	645	1.14	8.0	14.0	21.0		
12	0.895	560	650	1.16	8.0	13.0	20.5		
12	0.897	540	615	1.14	9.0	15.0	21.5		
12	0.893	550	635	1.15	9.5	15.0	22.0		
12	0.890	570	650	1.14	9.0	13.5	21.0		
12	0.887	535	620	1.16	8.5	13.5	21.0		
12	0.890	560	645	1.15	8.5	14.5	21.5		
12	0.891	550	640	1.16	9.5	15.0	22.0		
12	0.889	560	650	1.16	8.5	14.0	21.0		
12	0.888	565	645	1.14	8.0	13.5	20.0		
12	0.888	560	630	1.13	9.0	14.5	21.5		
12	0.893	540	610	1.13	8.5	14.0	21.0		
12	0.891	540	620	1.15	9.0	14.5	21.5		
12	0.890	555	640	1.15	9.0	15.0	21.5		
12	0.910	555	645	1.16	8.5	14.0	21.0		
12	0.892	535	610	1.14	10.0	15.5	22.5		
12	0.885	560	645	1.15	8.5	13.5	20.5		
12	0.895	540	620	1.15	8.0	14.0	19.0		
12	0.894	540	610	1.13	10.0	15.5	22.5		
12	0.892	540	615	1.14	8.5	14.0	21.0		
12	0.888	560	635	1.13	9.0	14.5	21.5		
12	0.890	545	625	1.15	9.0	15.0	21.5		
12	0.891	555	635	1.14	8.5	13.5	21.0		
12	0.895	535	610	1.14	8.0	14.0	20.5		
12	0.891	545	620	1.14	9.0	14.5	21.5		
12	0.894	535	605	1.13	9.0	14.5	21.5		
12	0.895	530	595	1.12	8.5	13.5	21.0		
12	0.900	535	605	1.13	9.0	15.0	21.5		
12	0.888	540	620	1.15	8.5	14.0	21.0		
12	0.894	540	620	1.15	8.5	14.0	21.0		
12	0.896	530	610	1.15	10.0	15.5	22.5		
12	0.892	550	630	1.15	9.5	15.0	22.0		
12	0.885	545	610	1.12	10.0	16.0	23.5		
12	0.889	555	635	1.14	9.0	14.5	21.5		
12	0.890	525	600	1.14	8.0	13.0	20.0		
12	0.892	530	600	1.13	8.5	13.5	20.5		
12	0.896	540	620	1.15	8.0	13.0	20.0		
12	0.889	530	615	1.16	10.0	16.5	23.5		
12	0.890	535	620	1.16	9.0	14.5	21.5		
12	0.894	535	620	1.16	8.5	15.0	21.5		
12	0.887	550	635	1.15	9.5	15.0	22.0		
12	0.890	530	605	1.14	10.0	16.0	23.5		
12	0.892	555	625	1.13	8.5	14.0	21.0		
12	0.889	550	630	1.15	8.5	13.5	21.0		
12	0.891	555	635	1.14	8.5	14.0	21.0		
12	0.894	550	630	1.15	9.0	13.5	21.0		
12	0.892	555	645	1.16	9.0	14.5	21.5		
12	0.893	550	625	1.14	8.5	13.5	21.0		
12	0.889	560	640	1.14	8.0	13.0	20.0		
12	0.890	545	620	1.14	8.5	13.5	20.5		
12	0.892	565	645	1.14	8.0	14.0	21.0		
12	0.895	560	650	1.16	8.0	13.0	20.5		
12	0.897	540	615	1.14	9.0	15.0	21.5		
12	0.893	550	635	1.15	9.5	15.0	22.0		

12	0.895	560	640	1.14	8.5	14.0	21.0	1.18	1.02
12	0.892	565	665	1.18	8.0	13.5	20.5		
12	0.890	560	645	1.15	8.5	14.0	21.0		
12	0.886	550	635	1.15	9.0	14.5	21.5		
12	0.885	540	615	1.14	8.5	14.0	21.0		
12	0.896	555	635	1.14	9.0	15.0	21.5		
12	0.893	560	640	1.14	9.0	14.5	21.5		
12	0.890	550	645	1.17	9.5	15.0	22.0		
12	0.892	540	615	1.14	9.0	14.5	21.5		
12	0.899	550	630	1.15	8.5	13.5	21.0		
12	0.896	555	640	1.15	8.5	13.5	21.0		
12	0.892	550	630	1.15	9.0	14.0	21.0		
12	0.896	530	605	1.14	9.0	14.5	21.5		
12	0.889	540	630	1.17	9.5	15.0	22.0		
12	0.892	535	620	1.16	9.5	15.5	22.5		
12	0.890	550	630	1.15	8.5	14.0	21.0		
12	0.895	550	635	1.15	9.0	14.5	21.5		
12	0.893	545	625	1.15	9.0	15.0	22.0		
12	0.894	555	645	1.16	8.5	14.0	21.0		
12	0.892	550	625	1.14	8.0	13.5	20.0		
12	0.891	560	640	1.14	8.5	14.0	21.0		
12	0.884	560	640	1.15	9.0	15.0	21.5		
12	0.879	545	625	1.15	8.5	14.5	21.0		
12	0.881	550	625	1.14	8.5	14.5	21.0		
12	0.892	550	630	1.15	8.5	14.5	21.0		
12	0.888	545	620	1.14	8.0	14.0	21.0		
12	0.880	555	635	1.14	9.0	15.0	21.5		
12	0.887	540	620	1.15	8.0	14.0	20.5		
12	0.891	540	615	1.14	8.0	13.5	20.5		
12	0.897	530	615	1.16	8.0	14.0	20.5		
12	0.875	525	605	1.15	8.0	13.0	20.0		
12	0.885	525	605	1.15	8.0	13.0	20.0		
12	0.888	560	645	1.15	9.0	15.0	21.5		
12	0.900	560	650	1.16	9.5	16.0	22.0		
12	0.878	555	640	1.15	9.5	16.0	22.0		
12	0.881	550	635	1.15	9.0	15.0	21.5		
12	0.886	555	640	1.15	9.5	15.5	22.0		
12	0.887	555	640	1.15	9.0	15.0	21.5		
12	0.885	560	640	1.14	10.5	16.5	22.5		
12	0.884	555	640	1.15	9.5	15.0	21.5		
12	0.883	550	635	1.15	10.5	16.5	22.5		
12	0.887	560	640	1.14	9.5	15.5	22.0		
12	0.889	530	605	1.14	8.0	13.5	20.5		
12	0.882	545	620	1.14	8.5	14.5	21.0		
12	0.886	545	625	1.15	8.0	14.0	21.0		
12	0.889	535	610	1.14	8.5	14.0	20.5		
12	0.885	530	610	1.15	8.0	13.0	20.0		
12	0.882	555	635	1.14	9.0	15.0	21.5		
12	0.882	535	605	1.13	8.0	13.5	20.0		
12	0.885	540	615	1.14	8.0	13.5	20.5		
12	0.879	540	620	1.15	8.5	14.0	21.0		
12	0.881	555	635	1.14	9.0	15.0	21.5		
12	0.883	535	620	1.16	8.5	14.0	20.5		
12	0.889	550	625	1.14	9.0	14.5	21.0		
12	0.882	550	625	1.14	9.0	14.5	21.0		
12	0.884	550	625	1.14	9.0	14.5	21.0		
12	0.885	535	610	1.14	8.0	13.5	20.0		
12	0.888	555	635	1.14	9.5	15.0	21.5		
12	0.882	530	615	1.16	8.5	14.0	20.5		
12	0.882	545	620	1.14	9.0	14.5	21.0		
12	0.885	550	625	1.14	8.5	14.0	21.0		
12	0.890	545	625	1.15	9.0	14.5	21.0		
12	0.885	530	610	1.15	8.0	13.0	20.0		
12	0.881	535	610	1.14	8.5	14.0	20.5		
12	0.883	530	605	1.14	8.0	13.0	20.0		
12	0.887	545	625	1.15	9.0	14.5	21.0		
12	0.890	530	610	1.15	8.5	14.0	20.5		
12	0.884	530	605	1.14	8.0	13.0	20.0		
12	0.883	530	605	1.14	8.0	13.0	20.0		
12	0.886	535	615	1.15	8.0	13.5	20.5		
12	0.889	530	605	1.14	8.0	13.0	20.0		
12	0.887	525	600	1.14	8.0	13.5	20.0		
12	0.888	530	605	1.14	8.5	13.5	20.0		
12	0.889	555	640	1.15	9.5	15.5	22.0		
12	0.887	555	640	1.15	9.0	15.0	21.5		
12	0.891	555	640	1.15	9.5	15.0	22.0		
12	0.891	555	640	1.15	9.5	15.0	22.0		

12	0.888	560	640	1.14	10.0	16.0	22.5		
12	0.895	545	625	1.15	9.0	14.5	21.0		
12	0.896	550	630	1.15	9.0	14.5	21.0		
12	0.889	555	635	1.14	9.5	15.0	21.5		
12	0.892	555	635	1.14	9.5	15.0	21.5		
12	0.890	560	645	1.15	10.0	16.0	22.0		
12	0.892	555	640	1.15	9.5	15.0	21.5		
12	0.889	550	630	1.15	10.5	16.5	22.5		
12	0.894	555	640	1.15	10.5	16.5	22.5		
12	0.881	540	620	1.15	9.5	15.0	21.5		
12	0.880	540	620	1.15	9.0	14.5	21.0		
12	0.886	550	635	1.15	10.0	16.0	22.0		
12	0.883	555	640	1.15	9.5	15.0	21.5		
12	0.889	555	645	1.16	9.5	15.5	22.0		
12	0.883	560	645	1.15	10.0	16.0	22.5		
12	0.888	555	640	1.15	9.0	14.5	21.0		
12	0.892	555	635	1.14	9.5	15.0	21.5		
12	0.887	550	630	1.15	9.5	15.0	21.5		
12	0.885	545	620	1.14	9.0	14.0	20.5		
12	0.883	550	625	1.14	9.0	14.5	21.0		
12	0.884	550	630	1.15	9.0	14.5	21.0		
12	0.891	540	620	1.15	8.0	13.5	20.5		
12	0.896	555	635	1.14	9.0	15.0	21.5		
12	0.888	540	620	1.15	9.0	14.5	21.0		
12	0.885	540	615	1.14	8.5	14.0	20.5		
12	0.894	545	615	1.13	9.5	15.0	21.5		
12	0.896	525	610	1.16	8.5	13.5	20.0		
12	0.889	530	610	1.15	8.5	14.0	20.5		
12	0.889	555	640	1.15	9.0	14.5	21.0		
12	0.891	560	650	1.16	9.0	14.5	21.0		
12	0.891	550	640	1.16	9.5	15.0	21.5		
12	0.888	550	625	1.14	9.5	15.5	22.0		
12	0.893	550	625	1.14	8.5	14.0	21.0		
12	0.892	555	645	1.16	8.5	14.5	21.0		
12	0.887	545	625	1.15	10.0	16.0	22.0		
12	0.887	560	645	1.15	9.5	15.0	21.5		
12	0.890	560	645	1.15	9.5	16.0	22.5		
12	0.894	550	635	1.15	9.0	15.0	21.5		
12	0.890	530	605	1.14	8.5	14.0	20.5		
12	0.884	535	610	1.14	9.0	15.0	21.5		
12	0.887	540	625	1.16	8.0	14.0	20.5		
12	0.897	535	610	1.14	8.0	14.0	20.5		
12	0.894	530	610	1.15	8.5	14.5	21.0		
12	0.883	540	625	1.16	8.5	14.5	21.0		
12	0.886	525	610	1.16	8.0	13.5	20.5		
12	0.894	540	615	1.14	8.5	14.0	20.5		
12	0.896	530	615	1.16	8.0	13.5	20.5		
12	0.886	550	630	1.15	8.0	14.0	21.0		
12	0.889	535	615	1.15	8.0	13.0	20.0		
12	0.888	550	630	1.15	8.5	14.5	21.5		
12	0.892	550	625	1.14	9.5	15.5	22.0		
12	0.885	550	625	1.14	9.5	16.0	22.5		
12	0.891	535	610	1.14	8.0	14.0	21.0		
12	0.885	555	635	1.14	8.5	14.5	21.5		
12	0.889	535	615	1.15	8.0	13.0	20.5		
12	0.883	545	620	1.14	9.0	15.0	21.5		
12	0.887	550	625	1.14	9.5	15.5	22.0		
12	0.886	560	645	1.15	8.5	14.5	21.0		
12	0.892	555	640	1.15	9.0	15.0	21.5		
12	0.885	550	635	1.15	9.0	15.0	21.5		
12	0.887	555	640	1.15	9.0	15.0	22.0		
12	0.887	560	645	1.15	9.5	15.5	22.0		
12	0.889	550	630	1.15	9.0	15.0	21.5		
12	0.885	550	630	1.15	9.0	14.5	21.0		
12	0.886	540	620	1.15	8.5	14.5	21.0		
12	0.886	540	615	1.14	8.5	14.0	20.5		
12	0.893	550	640	1.16	10.5	16.5	22.5		
12	0.888	560	645	1.15	10.0	16.0	22.5		
12	0.891	560	645	1.15	9.5	15.5	22.0		
12	0.892	560	650	1.16	9.5	15.5	22.0		
12	0.895	550	635	1.15	9.0	15.0	21.5		
12	0.891	560	650	1.16	9.5	15.5	22.0		
12	0.893	540	620	1.15	8.5	14.5	21.0		
12	0.889	550	640	1.16	9.0	15.0	21.5		
12	0.892	550	635	1.15	9.0	14.5	21.0		
12	0.888	560	655	1.17	9.5	15.5	22.0		

1.180

0.850

1.20

0.81

12	0.889	550	630	1.15	8.5	14.0	21.0		
12	0.884	545	620	1.14	9.0	15.0	21.5		
12	0.889	550	635	1.15	9.0	15.0	21.5		
12	0.885	540	620	1.15	8.5	14.0	20.5		
12	0.885	535	620	1.16	9.5	15.5	21.0		
12	0.890	540	615	1.14	10.0	15.0	22.5		
12	0.900	535	620	1.16	8.0	14.0	20.0		
12	0.889	535	620	1.16	9.5	14.0	21.5		
12	0.891	540	630	1.17	8.0	15.5	21.5		
12	0.891	545	610	1.12	9.5	14.0	23.5		
12	0.898	540	615	1.14	8.0	15.5	22.5		
12	0.891	545	620	1.14	9.5	14.0	21.0		
12	0.889	540	625	1.16	8.0	15.5	22.5		
12	0.892	535	620	1.16	9.5	13.5	23.5		
12	0.899	550	625	1.14	8.0	14.0	21.0		
12	0.890	550	645	1.17	9.0	13.5	21.5		
12	0.891	545	640	1.17	8.5	14.0	22.5		
12	0.893	540	625	1.16	10.0	15.0	21.0		
12	0.894	535	620	1.16	10.0	16.0	21.5		
12	0.890	540	625	1.16	8.0	14.0	22.5		
12	0.890	545	615	1.13	9.5	15.0	21.0		
12	0.893	555	620	1.12	8.0	14.0	21.5		
12	0.894	560	625	1.12	9.5	13.5	21.5		
12	0.890	565	630	1.12	8.0	13.5	21.0		
12	0.890	540	630	1.17	9.5	14.0	21.5		
12	0.893	540	615	1.14	8.0	15.0	20.0		
12	0.894	550	625	1.14	9.5	16.0	21.0		
12	0.899	550	640	1.16	8.0	14.0	21.0		
12	0.885	555	645	1.16	9.5	15.0	21.5		
12	0.884	545	640	1.17	8.0	14.5	21.5		
12	0.886	545	630	1.16	10.0	14.0	21.5		
12	0.882	545	635	1.17	10.0	15.5	23.0		
12	0.889	545	635	1.17	8.0	14.0	23.5		
12	0.882	540	620	1.15	9.5	14.5	21.0		
12	0.883	540	620	1.15	8.0	14.5	21.5		
12	0.884	550	625	1.14	9.5	15.0	22.5		
12	0.889	535	625	1.17	8.0	14.0	22.5		
12	0.886	550	635	1.15	9.5	15.0	20.0		
12	0.882	545	620	1.14	10.0	14.0	21.0		
12	0.887	555	635	1.14	8.0	15.0	23.5		
12	0.889	555	635	1.14	9.5	15.0	22.5		
12	0.884	540	635	1.18	8.0	14.0	21.0		
12	0.886	540	620	1.15	9.5	16.0	22.5		
12	0.883	550	625	1.14	8.0	14.0	21.5		
12	0.882	535	620	1.16	9.5	15.5	21.0		
12	0.881	555	640	1.15	8.0	14.0	22.5		
12	0.889	545	620	1.14	9.5	15.5	21.5		
12	0.885	560	640	1.14	8.0	13.5	20.0		
12	0.888	565	630	1.12	9.5	14.0	21.0		
12	0.888	550	635	1.15	8.0	14.0	22.5		
12	0.884	550	635	1.15	9.0	15.5	21.5		
12	0.889	545	625	1.15	10.0	14.0	21.5		
12	0.890	540	620	1.15	8.0	13.5	21.5		
12	0.896	535	625	1.17	9.5	14.0	21.0		
12	0.893	540	625	1.16	8.0	15.0	21.0		
12	0.894	540	630	1.17	9.5	14.0	22.5		
12	0.892	555	625	1.13	8.0	15.0	21.5		
12	0.894	560	635	1.13	9.0	14.0	21.5		
12	0.896	555	630	1.14	10.0	16.0	21.5		
12	0.897	545	635	1.17	8.0	14.0	21.0		
12	0.893	550	635	1.15	9.5	15.5	22.5		
12	0.894	550	640	1.16	8.0	14.0	21.5		
12	0.890	550	640	1.16	9.5	15.5	22.5		
12	0.890	545	635	1.17	8.0	14.0	22.5		
12	0.887	545	630	1.16	10.0	15.5	21.0		
12	0.885	550	635	1.15	8.0	14.0	21.5		
12	0.886	530	615	1.16	9.5	13.5	23.5		
12	0.882	530	615	1.16	8.0	14.0	21.0		
12	0.880	555	625	1.13	10.0	15.0	21.5		
12	0.879	545	615	1.13	8.0	14.0	21.5		
12	0.879	545	630	1.16	9.5	13.5	20.0		
12	0.884	525	620	1.18	8.0	14.0	21.0		
12	0.880	565	630	1.12	9.5	15.0	21.0		
12	0.880	530	620	1.17	8.0	14.0	22.5		
12	0.877	560	625	1.12	9.5	15.5	23.5		
12	0.876	550	615	1.12	8.0	14.0	21.0		

1.20

0.81

1.20

0.81

12	0.877	530	620	1.17	10.0	15.0	20.0	1.15	0.82
12	0.879	530	620	1.17	8.0	14.0	20.0		
12	0.879	535	625	1.17	9.5	13.5	22.5		
12	0.880	545	620	1.14	8.0	14.0	22.5		
12	0.876	540	630	1.17	9.5	15.0	21.5		
12	0.877	545	635	1.17	8.0	14.0	21.5		
12	0.879	560	630	1.13	9.0	13.5	23.5		
12	0.883	555	630	1.14	10.0	14.0	20.0		
12	0.885	555	635	1.14	8.0	15.0	23.5		
12	0.884	535	615	1.15	9.5	14.0	22.5		
12	0.889	550	630	1.15	8.0	15.0	23.5		
12	0.880	535	620	1.16	9.5	14.0	21.5		
12	0.881	535	625	1.17	8.0	15.5	21.5		
12	0.882	550	625	1.14	9.0	14.0	22.5		
12	0.883	555	645	1.16	8.5	13.5	22.0		
12	0.885	555	620	1.12	9.0	14.0	21.0		
12	0.884	560	655	1.17	8.0	15.0	20.5		
12	0.882	550	640	1.16	10.0	15.0	21.5		
12	0.883	550	635	1.15	8.0	16.0	22.0		
12	0.881	555	620	1.12	9.5	14.0	21.0		
12	0.886	545	640	1.17	8.0	15.0	22.5		
12	0.881	540	630	1.17	10.0	16.0	23.0		
12	0.889	530	620	1.17	8.0	15.0	21.0		
12	0.870	555	620	1.12	9.5	14.5	21.0		
12	0.885	550	620	1.13	8.5	14.0	20.0		
12	0.883	525	615	1.17	8.0	15.0	22.5		
12	0.882	530	615	1.16	9.0	14.5	21.5		
12	0.884	550	635	1.15	8.0	15.0	21.0		
12	0.886	555	625	1.13	9.5	14.5	20.5		
12	0.887	550	640	1.16	8.5	14.0	21.0		
12	0.882	560	625	1.12	9.5	15.0	21.5		
12	0.877	545	620	1.14	8.5	16.0	22.5		
12	0.886	535	625	1.17	8.0	15.5	22.0		
12	0.880	560	650	1.16	9.0	14.0	21.5		
12	0.881	560	645	1.15	8.0	16.0	22.0		
12	0.883	535	625	1.17	9.0	15.5	21.0		
12	0.881	540	630	1.17	8.0	14.0	21.5		
12	0.884	550	625	1.14	9.5	15.0	21.5		
12	0.882	555	635	1.14	8.0	14.5	22.0		
12	0.886	530	620	1.17	9.5	14.0	20.5		
12	0.886	555	625	1.13	8.0	15.0	20.0		
12	0.880	550	630	1.15	10.0	14.0	22.5		
12	0.879	535	625	1.17	8.0	15.5	20.5		
12	0.876	530	615	1.16	9.5	14.0	21.5		
12	0.877	540	615	1.14	8.0	15.5	22.0		
12	0.880	560	625	1.12	9.5	14.0	21.5		
12	0.879	550	630	1.15	8.0	15.0	20.5		
12	0.879	525	610	1.16	9.5	16.0	20.0		
12	0.880	535	615	1.15	8.0	15.0	20.5		
12	0.884	535	625	1.17	9.0	14.0	21.5		
12	0.885	525	615	1.17	8.5	15.5	21.5		
12	0.883	535	615	1.15	9.0	14.0	23.0		
12	0.881	530	615	1.16	8.5	15.0	22.0		
12	0.884	530	615	1.16	8.5	14.0	21.0		
12	0.881	535	615	1.15	8.5	13.5	21.0		
12	0.883	535	620	1.16	9.0	15.0	22.0		
12	0.884	525	605	1.15	8.0	13.5	20.5		
12	0.882	530	605	1.14	8.0	13.0	20.0		
12	0.890	550	625	1.14	10.0	15.5	22.5		
12	0.884	545	620	1.14	9.0	14.5	21.5		
12	0.886	545	620	1.14	9.5	15.0	22.0		
12	0.886	545	620	1.14	9.0	14.5	21.5		
12	0.892	540	615	1.14	8.5	14.0	21.0		
12	0.887	545	625	1.15	10.0	16.0	22.5		
12	0.888	535	610	1.14	8.5	13.5	20.5		
12	0.891	545	630	1.16	10.5	16.5	23.5		
12	0.888	550	635	1.15	10.0	16.0	22.5		
12	0.883	535	625	1.17	9.5	15.0	22.0		
12	0.886	535	620	1.16	9.0	14.5	21.5		
12	0.893	540	625	1.16	10.0	15.5	22.5		
12	0.890	555	640	1.15	8.5	14.0	21.0		
12	0.886	545	640	1.17	10.0	16.0	22.5		
12	0.887	545	630	1.16	9.5	15.0	22.0		
12	0.888	540	615	1.14	9.0	14.5	21.5		
12	0.891	535	610	1.14	8.5	14.0	21.0		
12	0.883	535	610	1.14	8.0	13.5	20.5		

12	0.885	530	610	1.15	8.0	13.0	20.0		
12	0.884	535	610	1.14	8.5	13.5	20.5		
12	0.889	535	610	1.14	8.5	14.0	21.0		
12	0.881	535	610	1.14	8.0	13.5	20.5		
12	0.882	530	605	1.14	8.0	13.0	20.0		
12	0.892	540	620	1.15	9.0	15.0	22.0		
12	0.889	545	635	1.17	9.5	16.0	22.5		
12	0.889	545	625	1.15	9.0	15.0	22.0		
12	0.889	555	635	1.14	10.0	14.0	23.0		
12	0.893	530	615	1.16	9.0	14.5	21.5		
12	0.888	550	635	1.15	10.5	16.0	23.0		
12	0.887	560	645	1.15	8.5	14.0	21.0		
12	0.889	555	640	1.15	9.0	14.5	21.5		
12	0.890	555	630	1.14	9.5	15.0	22.0		
12	0.887	555	630	1.14	9.5	14.5	21.5		
12	0.890	560	635	1.13	9.0	15.5	22.0		
12	0.888	550	625	1.14	10.0	16.5	23.5		
12	0.889	565	655	1.16	8.5	14.0	21.0		
12	0.891	550	640	1.16	9.5	14.5	22.0		
12	0.886	560	645	1.15	8.5	14.0	21.0		
12	0.889	560	655	1.17	8.0	13.5	20.5		
12	0.884	545	640	1.17	10.0	16.0	22.5		
12	0.881	550	635	1.15	8.5	14.0	21.0		
12	0.882	550	630	1.15	10.0	15.5	22.5		
12	0.883	525	605	1.15	8.5	13.5	21.0		
12	0.886	525	610	1.16	10.5	16.5	23.5		
12	0.882	540	625	1.16	9.0	14.5	21.5		
12	0.884	540	620	1.15	9.0	14.5	21.5		
12	0.883	550	645	1.17	9.5	15.0	21.5		
12	0.889	550	640	1.16	8.5	14.5	21.5		
12	0.890	535	620	1.16	9.0	14.5	21.5		
12	0.891	525	615	1.17	10.0	16.0	22.5		
12	0.889	550	645	1.17	8.5	14.5	21.5		
12	0.892	535	610	1.14	8.5	14.0	21.0		
12	0.890	530	605	1.14	10.0	16.0	22.5		
12	0.891	545	620	1.14	8.0	13.5	20.0		
12	0.893	535	610	1.14	9.0	14.5	21.5		
12	0.890	550	645	1.17	8.5	13.5	20.0		
12	0.887	540	615	1.14	9.5	14.5	21.5		
12	0.889	545	640	1.17	9.0	15.0	21.5		
12	0.890	540	620	1.15	10.0	16.0	22.5		
12	0.889	540	625	1.16	10.5	16.5	23.5		
12	0.896	555	645	1.16	9.0	14.5	21.5		
12	0.895	545	635	1.17	8.0	13.5	20.0		
12	0.893	535	625	1.17	8.5	14.5	21.5		
12	0.892	545	630	1.16	9.0	14.0	21.5		
12	0.891	560	645	1.15	9.0	15.0	21.5		
12	0.892	560	630	1.13	8.0	13.5	20.0		
12	0.895	560	640	1.14	9.0	14.5	21.5		
12	0.893	525	600	1.14	8.5	14.0	21.0		
12	0.894	555	635	1.14	9.0	15.0	21.5		
12	0.892	555	620	1.12	8.0	13.0	20.0		
12	0.889	550	640	1.16	8.0	13.5	20.0		
12	0.888	565	645	1.14	9.5	15.0	22.0		
12	0.886	555	645	1.16	10.0	16.0	22.5		
12	0.890	550	640	1.16	8.5	14.0	21.0		
12	0.891	540	620	1.15	10.5	16.5	23.5		
12	0.890	545	625	1.15	9.0	14.5	21.5		
12	0.889	555	640	1.15	10.5	16.5	23.5		
12	0.887	555	640	1.15	9.0	14.5	21.5		
12	0.890	545	625	1.15	9.5	15.5	22.5		
12	0.891	560	640	1.14	9.0	15.0	22.0		
12	0.889	550	635	1.15	10.0	16.5	23.5		
12	0.888	555	640	1.15	8.5	14.0	21.0		
12	0.890	555	645	1.16	8.5	14.5	21.0		
12	0.889	555	640	1.15	9.0	15.0	22.0		
12	0.888	550	630	1.15	10.0	16.5	23.5		
12	0.890	555	650	1.17	8.5	14.0	21.0		
12	0.889	555	640	1.15	8.5	14.0	21.0		
12	0.887	555	630	1.14	10.0	16.0	22.5		
12	0.889	555	650	1.17	9.0	14.5	21.5		
12	0.891	555	645	1.16	9.0	15.0	21.5		
12	0.892	535	620	1.16	10.0	16.0	22.5		
12	0.894	555	640	1.15	9.0	14.5	21.5		
12	0.891	545	635	1.17	10.5	16.5	23.5		
12	0.892	550	640	1.16	9.0	14.5	21.5		

12	0.889	555	645	1.16	9.5	15.0	21.5	1.18	1.06
12	0.890	545	630	1.16	9.0	15.5	22.0		
12	0.887	555	645	1.16	9.5	16.0	22.5		
12	0.888	545	640	1.17	8.0	13.5	20.0		
12	0.891	540	630	1.17	9.0	14.5	21.5		
12	0.890	555	630	1.14	10.0	16.0	22.5		
12	0.889	540	625	1.16	10.5	16.5	23.5		
12	0.892	550	640	1.16	9.0	14.5	21.5		
12	0.893	555	635	1.14	8.0	13.5	20.0		
12	0.890	560	655	1.17	8.5	13.5	21.0		
12	0.889	555	655	1.18	9.0	14.5	21.5		
12	0.890	560	655	1.17	8.5	14.0	21.0		
12	0.891	555	655	1.18	8.5	14.0	21.0		
12	0.887	545	640	1.17	9.5	15.5	22.0		
12	0.889	555	635	1.14	9.0	14.5	21.5		
12	0.890	545	630	1.16	10.0	16.0	22.5		
12	0.888	545	630	1.16	10.5	16.5	23.0		
12	0.892	550	635	1.15	9.0	14.5	21.5		
12	0.889	535	620	1.16	9.5	15.0	22.0		
12	0.887	540	630	1.17	10.0	15.5	22.5		
12	0.888	540	630	1.17	10.5	16.5	23.0		
12	0.896	545	635	1.17	10.0	16.0	22.5		
12	0.894	555	635	1.14	9.5	15.0	22.0		
12	0.891	535	625	1.17	10.0	16.0	22.5		
12	0.893	540	625	1.16	10.0	16.0	22.5		
12	0.889	540	615	1.14	8.5	14.5	21.0		
12	0.891	540	620	1.15	8.5	14.5	21.0		
12	0.886	550	635	1.15	9.0	15.0	21.5		
12	0.888	530	610	1.15	8.0	14.0	20.5		
12	0.889	540	625	1.16	8.5	14.5	21.0		
12	0.891	540	620	1.15	8.0	14.0	20.5		
12	0.891	535	620	1.16	9.0	15.0	21.0		
12	0.884	560	645	1.15	9.5	16.0	22.0		
12	0.887	560	645	1.15	9.5	16.0	22.0		
12	0.889	550	635	1.15	9.5	15.5	21.5		
12	0.884	545	625	1.15	9.5	15.5	21.5		
12	0.884	535	620	1.16	9.0	14.5	21.0		
12	0.885	540	625	1.16	8.0	14.0	21.0		
12	0.890	530	610	1.15	8.0	14.0	20.0		
12	0.886	540	620	1.15	8.5	14.5	21.0		
12	0.885	535	615	1.15	8.0	13.5	20.5		
12	0.888	550	625	1.14	8.5	14.0	21.0		
12	0.894	550	630	1.15	9.5	15.5	22.0		
12	0.887	560	645	1.15	10.5	16.5	22.5		
12	0.889	555	640	1.15	10.0	16.5	22.5		
12	0.879	550	630	1.15	9.0	15.0	21.5		
12	0.885	545	625	1.15	9.5	15.5	21.5		
12	0.879	555	630	1.14	9.5	16.0	22.0		
12	0.888	550	635	1.15	10.0	16.0	22.0		
12	0.883	550	630	1.15	10.5	16.5	22.5		
12	0.889	540	625	1.16	9.5	15.0	21.0		
12	0.885	550	630	1.15	9.5	15.5	21.5		
12	0.889	550	635	1.15	9.0	15.0	21.5		
12	0.886	540	625	1.16	9.5	15.5	22.0		
12	0.879	550	635	1.15	10.0	16.0	22.5		
12	0.889	535	620	1.16	9.0	14.5	21.0		
12	0.889	550	635	1.15	9.5	15.0	21.5		
12	0.886	545	630	1.16	9.0	14.5	21.0		
12	0.888	555	635	1.14	9.5	15.5	21.5		
12	0.882	545	625	1.15	9.0	15.0	21.0		
12	0.886	550	630	1.15	9.0	15.0	21.0		
12	0.889	555	640	1.15	9.5	16.0	22.0		
12	0.891	540	625	1.16	9.0	14.5	21.0		
12	0.893	550	630	1.15	9.5	15.5	22.0		
12	0.886	540	625	1.16	9.0	15.0	21.5		
12	0.886	550	635	1.15	9.0	15.0	21.5		
12	0.895	550	630	1.15	9.5	15.5	21.5		
12	0.886	545	625	1.15	9.0	15.0	21.0		
12	0.888	555	640	1.15	10.0	16.5	22.5		
12	0.883	560	650	1.16	9.0	16.5	22.5		
12	0.889	555	645	1.16	10.5	16.5	22.5		
12	0.885	555	645	1.16	9.5	15.5	21.5		
12	0.889	560	650	1.16	10.0	16.0	22.5		
12	0.886	555	635	1.14	9.0	14.0	21.0		
12	0.894	540	620	1.15	9.0	14.0	21.0		
12	0.883	535	620	1.16	9.0	14.0	21.0		

12	0.883	525	615	1.17	9.5	13.5	20.5	1.18	1.02
12	0.886	540	620	1.15	9.5	13.5	20.5		
12	0.894	530	610	1.15	9.5	13.5	20.0		
12	0.886	535	615	1.15	9.0	14.0	20.5		
12	0.878	535	620	1.16	9.0	14.0	20.0		
12	0.886	525	610	1.16	9.0	14.0	20.0		
12	0.888	535	615	1.15	10.0	15.0	20.5		
12	0.885	550	635	1.15	9.0	13.0	20.0		
12	0.883	545	620	1.14	9.0	13.5	20.5		
12	0.886	540	620	1.15	9.0	13.5	22.0		
12	0.888	545	625	1.15	8.5	14.0	21.0		
12	0.882	525	610	1.16	8.5	14.0	21.0		
12	0.883	550	635	1.15	8.5	14.0	21.0		
12	0.891	555	640	1.15	8.5	13.5	20.5		
12	0.893	540	625	1.16	9.0	14.0	22.0		
12	0.886	545	625	1.15	9.0	14.0	22.5		
12	0.886	540	615	1.14	9.0	13.5	21.0		
12	0.892	545	625	1.15	9.5	13.5	21.0		
12	0.893	535	615	1.15	9.5	13.0	20.5		
12	0.883	525	610	1.16	10.0	13.0	21.0		
12	0.888	550	635	1.15	9.5	13.0	21.0		
12	0.888	545	625	1.15	9.0	13.5	22.0		
12	0.894	525	615	1.17	9.0	13.5	21.5		
12	0.882	535	620	1.16	9.0	13.5	21.0		
12	0.885	555	640	1.15	9.0	14.0	21.0		
12	0.890	550	630	1.15	9.0	14.0	21.0		
12	0.895	550	635	1.15	8.5	14.0	22.5		
12	0.886	530	610	1.15	8.5	14.0	21.0		
12	0.889	530	610	1.15	9.0	13.5	21.0		
12	0.906	530	615	1.16	9.0	15.0	21.0		
12	0.900	550	630	1.15	9.0	15.0	20.5		
12	0.921	550	635	1.15	9.5	15.0	20.5		
12	0.917	540	620	1.15	10.0	15.0	20.0		
12	0.900	535	620	1.16	9.0	14.5	20.5		
12	0.898	525	610	1.16	9.0	14.5	20.0		
12	0.910	535	615	1.15	9.0	14.5	20.0		
12	0.912	530	610	1.15	9.5	14.5	20.5		
12	0.897	535	615	1.15	9.5	14.5	20.0		
12	0.896	545	620	1.14	9.0	15.0	22.0		
12	0.900	530	610	1.15	9.0	15.0	22.0		
12	0.899	530	615	1.16	9.0	14.0	21.0		
12	0.895	550	635	1.15	8.5	14.0	21.0		
12	0.896	535	615	1.15	8.0	14.0	21.0		
12	0.897	550	625	1.14	9.0	14.0	20.5		
12	0.896	550	625	1.14	9.0	13.0	21.0		
12	0.895	530	610	1.15	9.5	13.5	22.5		
12	0.896	545	625	1.15	9.5	13.5	21.0		
12	0.896	545	630	1.16	8.5	13.5	21.0		
12	0.897	550	635	1.15	8.5	14.0	20.5		
12	0.892	535	620	1.16	8.5	15.0	21.0		
12	0.895	530	610	1.15	10.0	14.0	21.0		
12	0.895	535	620	1.16	9.0	14.0	22.0		
12	0.896	530	615	1.16	9.0	14.0	21.5		
12	0.890	545	625	1.15	9.0	14.0	21.0		
12	0.889	550	625	1.14	9.5	15.0	21.0		
12	0.891	530	615	1.16	9.5	14.0	21.5		
12	0.893	540	620	1.15	9.5	14.0	22.5		
12	0.886	550	630	1.15	8.5	13.5	21.5		
12	0.884	550	625	1.14	9.0	13.5	21.5		
12	0.892	545	620	1.14	9.0	14.0	21.0		
12	0.894	545	630	1.16	9.0	14.0	21.0		
12	0.886	555	640	1.15	10.5	16.5	22.5		
12	0.885	550	640	1.16	10.0	16.0	22.0		
12	0.893	540	620	1.15	9.0	15.0	21.0		
12	0.891	550	635	1.15	9.5	15.5	21.5		
12	0.894	560	645	1.15	10.0	16.0	22.0		
12	0.891	560	650	1.16	10.5	16.5	22.5		
12	0.888	540	615	1.14	8.5	14.0	20.5		
12	0.892	535	615	1.15	8.5	14.0	20.5		
12	0.889	530	615	1.16	9.0	14.5	21.0		
12	0.888	555	645	1.16	10.0	16.0	22.5		
12	0.887	550	640	1.16	9.5	15.5	21.5		
12	0.888	540	625	1.16	9.0	14.5	21.0		
12	0.884	550	635	1.15	9.5	15.0	21.5		
12	0.887	560	655	1.17	9.5	15.5	22.0		
12	0.883	550	635	1.15	9.0	15.0	21.5		
								1.06	0.95

12	0.883	560	650	1.16	10.0	16.0	22.5	1.05	0.97
12	0.894	530	615	1.16	10.0	15.0	20.0		
12	0.891	535	615	1.15	8.0	14.0	21.5		
12	0.893	540	620	1.15	9.5	16.0	22.5		
12	0.894	535	625	1.17	8.5	14.0	21.5		
12	0.890	540	615	1.14	9.0	15.0	22.5		
12	0.891	540	620	1.15	8.5	14.0	21.0		
12	0.892	540	615	1.14	8.0	15.5	21.5		
12	0.893	530	620	1.17	10.0	14.0	21.5		
12	0.890	545	615	1.13	8.0	15.0	22.5		
12	0.887	540	620	1.15	9.0	14.0	22.5		
12	0.890	535	625	1.17	8.0	13.5	22.5		
12	0.894	550	635	1.15	9.0	14.0	22.5		
12	0.894	550	645	1.17	10.0	15.0	21.0		
12	0.892	560	630	1.13	8.0	14.0	21.0		
12	0.890	560	640	1.14	9.5	15.5	21.0		
12	0.887	545	640	1.17	8.0	14.0	20.0		
12	0.880	555	650	1.17	9.5	15.5	21.5		
12	0.885	545	635	1.17	8.0	14.0	21.0		
12	0.886	560	635	1.13	9.0	15.5	21.5		
12	0.891	535	620	1.16	10.0	14.0	22.5		
12	0.892	540	630	1.17	8.0	16.0	22.5		
12	0.893	540	625	1.16	9.0	16.0	21.0		
12	0.893	550	645	1.17	8.0	14.0	21.5		
12	0.894	560	650	1.16	9.5	15.0	21.0		
12	0.891	560	650	1.16	8.0	15.5	22.5		
12	0.893	550	640	1.16	10.0	14.0	22.5		
12	0.894	545	625	1.15	8.0	15.0	22.5		
12	0.895	555	640	1.15	9.5	14.0	21.5		
12	0.896	550	635	1.15	8.0	15.5	21.0		
12	0.897	550	635	1.15	9.5	14.0	20.0		
12	0.893	560	640	1.14	8.0	15.5	21.0		
12	0.895	545	640	1.17	10.0	14.0	21.5		
12	0.896	545	640	1.17	8.0	15.5	21.0		
12	0.897	540	625	1.16	9.5	14.0	21.5		
12	0.896	545	630	1.16	9.5	15.5	20.5		
12	0.892	550	625	1.14	8.5	14.0	20.0		
12	0.894	545	640	1.17	8.0	15.5	20.5		
12	0.894	550	625	1.14	9.0	14.0	21.5		
12	0.896	535	620	1.16	8.0	15.5	22.5		
12	0.891	530	615	1.16	9.0	14.0	22.0		
12	0.892	550	625	1.14	10.0	13.5	21.5		
12	0.893	540	615	1.14	8.0	14.0	22.5		
12	0.896	540	630	1.17	9.5	15.5	20.0		
12	0.891	545	640	1.17	8.0	14.0	21.0		
12	0.895	550	635	1.15	9.5	15.5	22.5		
12	0.896	540	630	1.17	8.5	14.0	20.0		
12	0.897	535	615	1.15	8.5	15.5	21.5		
12	0.898	545	610	1.12	9.5	14.0	23.5		
12	0.895	540	625	1.16	8.0	15.5	21.5		
12	0.896	545	620	1.14	9.0	14.0	22.5		
12	0.893	550	630	1.15	10.0	15.5	21.5		
12	0.894	550	630	1.15	8.0	14.0	22.0		
12	0.896	540	620	1.15	8.0	14.0	21.5		
12	0.892	550	640	1.16	9.0	13.5	22.5		
12	0.888	545	625	1.15	8.0	13.5	21.5		
12	0.880	545	625	1.15	10.0	14.0	22.5		
12	0.884	525	615	1.17	8.0	15.0	21.5		
12	0.885	545	630	1.16	9.5	14.0	22.5		
12	0.897	540	620	1.15	8.0	15.5	21.0		
12	0.899	550	635	1.15	9.0	14.0	21.5		
12	0.899	555	635	1.14	10.0	14.0	20.0		
12	0.896	555	645	1.16	8.0	15.0	21.5		
12	0.894	550	635	1.15	9.5	16.0	22.5		
12	0.890	545	630	1.16	8.0	16.0	21.5		
12	0.885	545	620	1.14	8.0	15.0	22.5		
12	0.887	540	630	1.17	9.5	14.0	21.0		
12	0.886	550	640	1.16	8.0	14.5	21.0		
12	0.882	555	650	1.17	9.5	15.5	21.5		
12	0.888	555	645	1.16	8.0	14.0	22.5		
12	0.888	540	630	1.17	9.0	14.0	22.5		
12	0.882	540	630	1.17	10.0	13.5	21.5		
12	0.881	555	650	1.17	8.0	13.5	21.0		
12	0.884	535	615	1.15	9.5	14.0	21.0		
12	0.883	545	630	1.16	8.0	15.0	20.0		
12	0.886	535	615	1.15	9.5	14.0	22.5		

1.05

0.97

1.06

0.95

12	0.896	525	615	1.17	8.0	15.0	22.5
12	0.884	535	620	1.16	9.5	14.0	23.5
12	0.883	540	630	1.17	8.0	15.5	21.0
12	0.882	550	635	1.15	8.0	13.5	21.5
12	0.887	545	630	1.16	9.5	14.0	21.0
12	0.881	550	635	1.15	8.0	15.0	20.0
12	0.883	560	645	1.15	9.5	14.0	22.5
12	0.881	560	640	1.14	8.0	15.0	20.0
12	0.886	550	630	1.15	10.0	14.0	21.0
12	0.882	560	625	1.12	8.0	15.5	21.5
12	0.896	545	630	1.16	9.5	14.0	23.5
12	0.887	540	630	1.17	8.0	16.0	21.5
12	0.884	540	630	1.17	9.5	14.0	21.0
12	0.886	550	645	1.17	10.0	15.0	21.5
12	0.883	545	620	1.14	8.0	14.0	20.5
12	0.881	550	625	1.14	9.5	15.5	21.0
12	0.882	550	630	1.15	8.0	14.0	21.0
12	0.896	550	625	1.14	9.5	15.0	21.5
12	0.897	555	620	1.12	8.0	14.0	21.5
12	0.899	540	615	1.14	10.0	15.5	20.5
12	0.896	540	615	1.14	8.0	14.0	20.5
12	0.890	525	615	1.17	9.5	15.0	21.5
12	0.891	525	610	1.16	8.0	14.0	20.0
12	0.892	530	610	1.15	9.5	15.0	20.0
12	0.893	550	640	1.16	8.0	14.0	21.5
12	0.887	550	630	1.15	9.5	15.5	21.5
12	0.884	545	625	1.15	8.0	15.0	22.5
12	0.886	560	645	1.15	9.0	14.0	22.5
12	0.894	560	645	1.15	8.5	15.0	21.5
12	0.886	540	620	1.15	10.0	14.0	22.5
12	0.887	535	620	1.16	8.0	15.5	22.0
12	0.897	535	610	1.14	9.5	14.0	22.0
12	0.892	530	615	1.16	8.0	15.5	22.5
12	0.887	520	610	1.17	9.5	14.0	21.5
12	0.888	530	610	1.15	8.0	15.0	20.0
12	0.881	540	625	1.16	10.0	14.0	22.5
12	0.885	540	620	1.15	8.0	14.0	21.5
12	0.885	545	630	1.16	9.0	15.0	22.0
12	0.886	545	625	1.15	8.5	14.0	21.5
12	0.894	545	640	1.17	9.5	13.5	21.0
12	0.894	550	635	1.15	8.0	13.5	21.5
12	0.890	545	630	1.16	9.5	14.0	22.0
12	0.892	540	630	1.17	8.0	15.0	21.5
12	0.893	535	625	1.17	9.5	16.0	20.0
12	0.890	535	615	1.15	8.0	14.0	22.0
12	0.883	545	625	1.15	10.0	15.0	23.5
12	0.888	545	625	1.15	8.0	14.0	22.5
12	0.896	535	615	1.15	9.5	15.5	21.5
12	0.887	535	620	1.16	8.0	14.0	21.5
12	0.883	550	635	1.15	9.5	15.5	21.0
12	0.887	545	620	1.14	8.0	14.0	20.0
12	0.896	550	615	1.12	10.0	15.5	21.5
12	0.884	555	625	1.13	8.0	14.0	23.0
12	0.888	545	625	1.15	9.0	14.5	22.0
12	0.886	560	645	1.15	10.0	15.5	21.0
12	0.889	545	630	1.16	9.0	14.5	22.0
12	0.889	540	625	1.16	9.0	14.5	22.5
12	0.881	555	640	1.15	10.0	15.5	21.5
12	0.879	540	620	1.15	8.5	14.0	22.5
12	0.882	550	635	1.15	9.5	15.0	21.5
12	0.881	540	620	1.15	8.5	14.0	22.0
12	0.883	535	615	1.15	8.5	14.0	22.5
12	0.880	555	645	1.16	10.0	15.5	21.5
12	0.884	545	625	1.15	9.0	14.5	22.0
12	0.882	555	635	1.14	9.5	15.0	21.5
12	0.889	545	630	1.16	9.0	14.5	22.0
12	0.887	550	640	1.16	10.0	15.5	21.5
12	0.886	545	625	1.15	9.0	14.5	22.0
12	0.882	540	625	1.16	9.0	14.5	22.5
12	0.881	545	625	1.15	9.0	14.5	22.0
12	0.881	545	630	1.16	9.0	14.5	22.0
12	0.882	550	635	1.15	9.5	15.0	21.5
12	0.883	555	645	1.16	10.0	15.5	21.5
12	0.884	545	630	1.16	9.0	14.5	22.0
12	0.883	545	625	1.15	9.0	14.5	22.0
12	0.882	545	620	1.14	8.5	14.0	22.0

1.06

0.95

1.12

0.98

12	0.880	540	620	1.15	8.5	14.0	22.5	1.22	0.95
12	0.881	550	630	1.15	9.0	14.5	21.5		
12	0.882	550	635	1.15	9.5	15.0	21.5		
12	0.884	550	635	1.15	9.5	15.0	21.5		
12	0.883	545	625	1.15	9.0	14.5	22.0		
12	0.882	545	620	1.14	8.5	14.0	22.0		
12	0.881	550	635	1.15	9.5	15.0	21.5		
12	0.880	550	640	1.16	10.0	15.5	21.5		
12	0.883	550	635	1.15	9.5	15.0	21.5		
12	0.883	555	645	1.16	10.0	15.5	21.5		
12	0.884	560	655	1.17	10.5	16.0	21.0		
12	0.882	555	650	1.17	10.0	15.5	21.5		
12	0.883	550	635	1.15	9.5	15.0	21.5		
12	0.884	545	620	1.14	8.5	14.0	22.0		
12	0.882	540	625	1.16	9.0	14.5	22.5		
12	0.883	535	615	1.15	8.5	14.0	22.5		
12	0.881	545	630	1.16	9.0	14.5	22.0		
12	0.882	555	645	1.16	10.0	15.5	21.5		
12	0.883	550	640	1.16	10.0	15.5	21.5		
12	0.883	550	635	1.15	9.5	15.0	21.5		
12	0.886	545	625	1.15	9.0	14.5	22.0		
12	0.885	545	630	1.16	9.0	14.5	22.0		
12	0.889	550	635	1.15	9.5	15.0	21.5		
12	0.882	550	630	1.15	9.0	14.5	21.5		
12	0.883	555	640	1.15	10.0	15.5	21.5		
12	0.887	550	635	1.15	9.5	15.0	21.5		
12	0.889	545	625	1.15	9.0	14.5	22.0		
12	0.882	545	625	1.15	9.0	14.5	22.0		
12	0.886	540	620	1.15	8.5	14.0	22.5		
12	0.890	545	630	1.16	9.0	14.5	22.0		
12	0.891	555	645	1.16	10.0	15.5	21.5		
12	0.886	550	640	1.16	10.0	15.5	21.5		
12	0.887	545	630	1.16	9.0	14.5	22.0		
12	0.889	545	620	1.14	8.5	14.0	22.0		
12	0.887	555	635	1.14	9.5	15.0	21.5		
12	0.882	550	625	1.14	9.0	14.5	21.5		
12	0.883	545	620	1.14	8.5	14.0	22.0		
12	0.884	555	635	1.14	9.5	15.0	21.5		
12	0.885	545	620	1.14	8.5	14.0	22.0		
12	0.883	545	620	1.14	8.5	14.0	22.0		
12	0.882	545	620	1.14	8.5	14.0	22.0		
12	0.885	535	610	1.14	8.5	14.0	22.5		
12	0.883	545	625	1.15	9.0	14.5	22.0		
12	0.882	540	620	1.15	8.5	14.0	22.5		
12	0.880	550	625	1.14	9.0	14.5	21.5		
12	0.886	545	625	1.15	9.0	14.5	22.0		
12	0.884	535	610	1.14	8.5	14.0	22.5		
12	0.885	535	605	1.13	8.0	13.5	22.5		
12	0.882	535	605	1.13	8.0	13.5	22.5		
12	0.881	540	615	1.14	8.5	14.0	22.5		
12	0.882	550	625	1.14	9.0	14.5	21.5		
12	0.883	540	615	1.14	8.5	14.0	22.5		
12	0.880	545	625	1.15	9.0	14.5	21.5		
12	0.884	540	620	1.15	8.5	14.0	22.0		
12	0.885	540	615	1.14	8.5	14.0	22.5		
12	0.886	540	615	1.14	8.5	14.0	22.5		
12	0.882	545	620	1.14	8.5	14.0	21.5		
12	0.886	555	635	1.14	9.5	15.0	21.5		
12	0.884	545	620	1.14	8.5	14.0	22.0		
12	0.882	545	625	1.15	9.0	14.5	22.0		
12	0.885	550	630	1.15	9.0	14.5	21.5		
12	0.882	545	620	1.14	8.5	14.0	22.0		
12	0.883	545	620	1.14	8.5	14.0	22.0		
12	0.884	555	635	1.14	9.5	15.0	21.5		
12	0.885	550	625	1.14	9.0	14.5	21.5		
12	0.883	545	620	1.14	8.5	14.0	22.0		
12	0.884	540	620	1.15	8.5	14.0	22.5		
12	0.889	535	610	1.14	8.5	14.0	22.5		
12	0.890	545	620	1.14	8.5	14.0	22.0		
12	0.884	535	610	1.14	8.5	14.0	22.5		
12	0.883	550	630	1.15	9.0	14.5	21.5		
12	0.885	535	610	1.14	8.0	13.5	22.5		
12	0.886	535	610	1.14	8.5	14.0	22.5		
12	0.884	545	620	1.14	9.5	15.0	22.0		
12	0.886	540	625	1.16	9.0	14.5	22.5		
12	0.887	545	625	1.15	9.0	14.5	22.5		

12	0.886	550	630	1.15	9.0	14.5	21.5	1.09	0.98
12	0.888	550	625	1.14	9.0	14.5	21.5		
12	0.887	545	620	1.14	8.5	14.0	22.0		
12	0.878	545	625	1.15	9.0	14.5	22.0		
12	0.889	540	615	1.14	8.5	14.0	22.5		
12	0.889	545	630	1.16	9.0	14.5	22.0		
12	0.887	545	630	1.16	9.0	14.5	22.0		
12	0.888	535	610	1.14	8.5	14.0	22.5		
12	0.886	545	635	1.17	9.5	15.0	21.5		
12	0.885	550	640	1.16	9.5	15.0	22.0		
12	0.890	545	630	1.16	9.0	14.5	22.0		
12	0.894	530	605	1.14	8.5	14.0	22.5		
12	0.892	545	625	1.15	9.0	14.5	21.5		
12	0.893	550	635	1.15	9.5	15.0	21.5		
12	0.894	555	640	1.15	9.5	15.0	21.0		
12	0.892	540	625	1.16	9.0	14.5	22.0		
12	0.894	535	610	1.14	8.5	14.0	22.5		
12	0.888	555	640	1.15	10.0	15.5	21.0		
12	0.889	550	635	1.15	9.5	15.0	21.5		
12	0.886	540	625	1.16	9.0	14.5	22.0		
12	0.884	540	625	1.16	9.0	14.5	22.0		
12	0.892	555	630	1.14	9.5	14.5	21.5		
12	0.890	560	640	1.14	10.0	15.5	22.5		
12	0.889	560	640	1.14	8.5	14.0	21.0		
12	0.890	550	625	1.14	9.0	14.5	21.0		
12	0.893	550	635	1.15	10.0	15.0	22.0		
12	0.892	560	645	1.15	9.5	14.5	21.5		
12	0.890	550	630	1.15	9.0	14.0	21.0		
12	0.891	555	640	1.15	8.5	13.5	20.5		
12	0.895	550	635	1.15	9.5	14.5	21.5		
12	0.893	540	625	1.16	10.5	15.5	22.5		
12	0.892	550	630	1.15	9.0	14.0	21.5		
12	0.891	550	635	1.15	8.0	13.0	20.0		
12	0.897	540	630	1.17	10.5	16.0	22.5		
12	0.893	550	635	1.15	10.0	15.0	22.0		
12	0.894	540	625	1.16	9.0	14.0	21.0		
12	0.892	555	630	1.14	9.5	14.5	21.5		
12	0.898	530	620	1.17	10.5	15.5	22.5		
12	0.895	530	615	1.16	10.0	15.0	22.0		
12	0.893	530	610	1.15	8.5	13.5	20.5		
12	0.894	540	625	1.16	9.0	14.0	21.0		
12	0.885	525	610	1.16	9.5	14.5	21.5		
12	0.881	525	615	1.17	10.0	15.0	22.0		
12	0.879	530	620	1.17	9.5	15.0	21.5		
12	0.880	545	625	1.15	9.0	14.5	21.0		
12	0.885	535	615	1.15	9.0	14.0	21.0		
12	0.881	535	620	1.16	10.0	15.0	22.0		
12	0.880	535	620	1.16	9.5	15.5	22.0		
12	0.881	555	630	1.14	9.0	14.0	21.0		
12	0.887	545	620	1.14	8.5	13.5	20.5		
12	0.884	535	615	1.15	9.0	14.0	21.0		
12	0.881	535	615	1.15	9.0	14.0	21.0		
12	0.883	555	630	1.14	9.5	14.5	21.5		
12	0.888	530	615	1.16	9.0	14.0	21.0		
12	0.885	525	610	1.16	8.5	14.5	21.0		
12	0.882	535	615	1.15	9.5	15.0	21.5		
12	0.884	545	625	1.15	10.5	15.5	22.5		
12	0.888	545	620	1.14	10.0	15.0	22.0		
12	0.886	545	625	1.15	11.0	16.5	23.5		
12	0.883	550	630	1.15	9.5	16.0	23.0		
12	0.885	535	615	1.15	9.0	14.0	21.0		
12	0.889	535	620	1.16	8.5	14.0	21.0		
12	0.887	550	635	1.15	9.5	14.5	21.5		
12	0.883	550	635	1.15	8.5	13.5	20.5		
12	0.885	540	620	1.15	8.0	13.0	20.0		
12	0.891	540	630	1.17	9.0	14.0	21.0		
12	0.887	555	635	1.14	9.5	14.5	21.0		
12	0.884	560	645	1.15	9.0	14.0	21.0		
12	0.886	560	640	1.14	8.5	13.5	20.5		
12	0.890	535	620	1.16	9.0	14.0	21.0		
12	0.888	545	625	1.15	10.0	15.0	22.0		
12	0.885	555	635	1.14	9.5	15.5	22.5		
12	0.886	560	645	1.15	10.5	14.0	21.5		
12	0.892	550	630	1.15	10.0	15.0	22.0		
12	0.888	560	645	1.15	8.5	13.5	20.5		
12	0.886	540	620	1.15	9.0	14.0	21.0		

1.23

0.95

12	0.886	555	635	1.14	9.0	14.5	21.0		
12	0.894	555	635	1.14	9.5	14.5	21.5		
12	0.890	550	640	1.16	10.0	15.0	22.0		
12	0.886	555	630	1.14	10.0	15.5	22.0		
12	0.887	560	645	1.15	10.5	15.5	22.5		
12	0.895	550	630	1.15	11.0	16.0	23.0		
12	0.891	560	640	1.14	9.0	14.0	21.0		
12	0.887	540	620	1.15	9.5	14.5	21.5		
12	0.889	560	645	1.15	9.5	14.0	21.0		
12	0.895	560	640	1.14	10.0	15.0	22.0		
12	0.892	540	620	1.15	9.0	14.5	21.5		
12	0.888	555	640	1.15	9.0	14.0	21.0		
12	0.890	545	630	1.16	10.0	15.0	22.0		
12	0.896	565	630	1.12	11.0	16.5	23.5		
12	0.891	535	620	1.16	11.0	16.0	23.0		
12	0.889	555	635	1.14	10.0	15.0	22.0		
12	0.890	535	630	1.18	10.5	16.0	23.0		
12	0.896	550	635	1.15	11.0	16.5	23.5		
12	0.893	535	605	1.13	10.5	15.0	22.5		
12	0.890	540	625	1.16	10.0	15.0	22.0		
12	0.892	535	625	1.17	9.5	14.5	21.5		
12	0.892	550	630	1.15	10.0	13.5	21.0		
12	0.890	545	625	1.15	9.0	14.0	22.5		
12	0.889	555	640	1.15	9.0	14.0	21.0		
12	0.890	550	640	1.16	10.0	13.5	21.0		
12	0.893	550	630	1.15	9.0	14.0	21.0		
12	0.892	545	625	1.15	9.0	14.0	22.5		
12	0.892	555	640	1.15	9.0	13.5	21.0	1.10	0.82
12	0.890	555	640	1.15	9.0	13.5	21.0		
12	0.895	550	645	1.17	9.5	13.5	21.0		
12	0.893	545	635	1.17	9.5	13.0	21.5		
12	0.892	560	645	1.15	9.0	13.5	21.0		
12	0.891	560	640	1.14	9.0	13.5	20.5		
12	0.897	545	640	1.17	9.0	14.0	22.5		
12	0.893	550	650	1.18	10.0	14.0	21.0		
12	0.894	550	640	1.16	10.0	14.0	22.5		
12	0.892	525	620	1.18	9.0	14.5	21.0		
12	0.895	525	615	1.17	9.0	14.5	23.0		
12	0.892	540	635	1.18	9.0	15.0	20.0		
12	0.893	540	635	1.18	9.5	15.0	21.5		
12	0.891	550	645	1.17	9.5	15.0	21.5		
12	0.897	550	640	1.16	9.5	15.0	21.5		
12	0.893	535	635	1.19	9.0	14.0	21.5		
12	0.894	525	615	1.17	9.0	14.0	21.5		
12	0.892	550	645	1.17	9.0	14.5	22.5		
12	0.898	545	610	1.12	10.0	14.5	21.5		
12	0.895	530	625	1.18	9.0	14.5	21.0		
12	0.893	545	625	1.15	9.0	13.5	22.5		
12	0.892	535	625	1.17	9.0	13.5	20.0		
12	0.896	550	640	1.16	8.5	13.5	21.5		
12	0.898	540	615	1.14	8.5	14.0	20.0		
12	0.894	545	640	1.17	8.5	14.0	21.5		
12	0.892	540	635	1.18	8.0	14.0	21.5		
12	0.894	545	625	1.15	8.0	15.0	21.5		
12	0.895	555	645	1.16	9.5	15.0	20.0	1.16	0.85
12	0.892	545	635	1.17	9.5	14.0	21.5		
12	0.890	535	610	1.14	9.0	14.0	21.5		
12	0.892	545	625	1.15	9.0	14.0	21.5		
12	0.894	555	640	1.15	9.0	13.5	20.0		
12	0.893	560	640	1.14	10.0	13.5	21.5		
12	0.891	560	625	1.12	9.5	13.5	21.0		
12	0.891	525	605	1.15	9.5	14.0	21.5		
12	0.894	555	630	1.14	9.0	14.0	20.0		
12	0.895	555	635	1.14	9.0	14.0	20.0		
12	0.893	550	630	1.15	9.0	15.0	23.5		
12	0.892	550	635	1.15	9.5	14.0	21.5		
12	0.893	535	620	1.16	9.0	14.0	22.0		
12	0.897	540	630	1.17	9.0	13.5	22.5		
12	0.894	540	630	1.17	9.0	14.0	23.0		
12	0.890	540	625	1.16	9.5	15.0	22.0		
12	0.893	555	645	1.16	9.0	14.5	21.5		
12	0.892	535	620	1.16	8.5	14.0	21.0		
12	0.891	550	640	1.16	10.0	15.5	22.5		
12	0.888	535	620	1.16	9.0	14.5	21.5		
12	0.892	550	640	1.16	10.5	16.5	23.0		
12	0.891	535	615	1.15	8.0	13.5	20.5		

12	0.890	540	625	1.16	10.0	16.0	22.5	1.12	1.05
12	0.891	555	650	1.17	8.5	14.0	21.0		
12	0.893	555	655	1.18	9.0	14.5	21.5		
12	0.894	545	640	1.17	9.5	15.5	22.5		
12	0.892	560	660	1.18	8.0	13.5	20.5		
12	0.893	555	655	1.18	8.5	14.0	21.0		
12	0.895	565	660	1.17	8.0	13.5	20.0		
12	0.894	550	650	1.18	9.5	15.0	22.0		
12	0.891	560	655	1.17	8.0	13.5	20.5		
12	0.894	525	605	1.15	8.5	14.0	20.5		
12	0.897	535	615	1.15	8.5	14.0	21.0		
12	0.893	535	630	1.18	9.0	15.0	22.0		
12	0.892	550	640	1.16	9.5	15.5	22.5		
12	0.891	530	620	1.17	8.5	14.0	21.0		
12	0.894	560	650	1.16	8.0	13.5	20.5		
12	0.890	535	625	1.17	10.0	16.0	22.5		
12	0.889	545	635	1.17	9.5	15.0	22.0		
12	0.890	535	615	1.15	9.0	14.5	21.5		
12	0.892	540	635	1.18	10.0	15.5	22.5		
12	0.891	545	650	1.19	9.5	15.0	22.0		
12	0.890	560	655	1.17	8.0	13.5	20.5		
12	0.887	555	655	1.18	9.0	14.5	21.5		
12	0.879	535	635	1.19	9.5	15.0	22.0		
12	0.889	555	655	1.18	9.0	15.5	22.0		
12	0.888	535	625	1.17	9.0	14.5	21.5		
12	0.891	540	630	1.17	8.0	13.0	20.0		
12	0.890	535	625	1.17	10.0	16.0	22.5		
12	0.887	530	610	1.15	8.5	13.5	20.5		
12	0.889	540	615	1.14	9.0	14.5	21.5		
12	0.893	540	615	1.14	9.5	15.0	22.0		
12	0.895	550	630	1.15	9.0	14.5	21.5		
12	0.891	525	595	1.13	8.5	13.5	20.5		
12	0.890	525	595	1.13	8.0	13.0	20.0		
12	0.889	535	610	1.14	8.5	13.0	20.0		
12	0.892	525	605	1.15	8.5	13.5	20.5		
12	0.888	535	620	1.16	9.0	14.5	21.5		
12	0.890	530	605	1.14	8.5	14.0	21.0		
12	0.893	535	610	1.14	9.0	14.5	21.5		
12	0.896	530	600	1.13	8.5	13.5	20.5		
12	0.891	565	645	1.14	9.0	14.5	21.5		
12	0.890	555	635	1.14	8.5	14.0	21.0		
12	0.890	540	625	1.16	9.5	15.5	22.0		
12	0.893	555	635	1.14	9.0	15.0	22.0		
12	0.886	545	630	1.16	10.0	15.5	22.5		
12	0.888	560	650	1.16	8.5	14.0	21.0		
12	0.889	560	655	1.17	9.0	14.5	21.5		
12	0.894	555	655	1.18	9.0	14.5	21.5		
12	0.892	560	655	1.17	9.0	15.0	21.5		
12	0.890	545	625	1.15	10.0	16.0	22.5		
12	0.891	530	610	1.15	8.5	14.0	21.0		
12	0.895	535	615	1.15	8.5	14.0	21.0		
12	0.894	540	640	1.19	10.5	16.5	23.0		
12	0.893	530	625	1.18	9.5	15.5	22.0		
12	0.894	540	630	1.17	10.0	17.0	23.0		
12	0.891	540	630	1.17	10.0	15.5	22.5		
12	0.893	560	640	1.14	9.0	14.5	21.5		
12	0.890	535	615	1.15	9.0	14.5	21.5		
12	0.893	540	625	1.16	9.5	15.0	22.0		
12	0.891	545	630	1.16	10.5	17.0	23.5		
12	0.888	555	650	1.17	8.5	14.0	21.0		
12	0.892	550	640	1.16	9.5	15.5	22.0		
12	0.893	545	630	1.16	10.5	17.0	23.0		
12	0.894	545	635	1.17	10.0	16.5	22.5		
12	0.888	540	620	1.15	10.0	16.0	22.5		
12	0.892	540	620	1.15	9.0	14.5	21.5		
12	0.894	545	625	1.15	8.5	14.0	21.0		
12	0.890	530	610	1.15	8.0	13.5	20.0		
12	0.889	535	610	1.14	8.0	13.0	20.5		
12	0.890	530	605	1.14	8.0	13.0	20.0		
12	0.893	545	625	1.15	8.5	14.0	21.0		
12	0.892	530	610	1.15	8.0	13.5	20.5		
12	0.890	530	605	1.14	8.5	13.0	20.0		
12	0.891	530	605	1.14	8.5	13.0	20.0		
12	0.895	535	615	1.15	8.0	14.0	20.5		
12	0.893	530	605	1.14	8.0	13.5	20.0		
12	0.892	525	600	1.14	8.0	13.0	20.0		

1.12

1.05

1.15

0.95

12	0.891	530	605	1.14	8.5	13.0	20.0	1.15	0.95
12	0.897	555	640	1.15	9.5	15.5	22.0		
12	0.893	555	640	1.15	9.0	14.5	21.5		
12	0.894	555	640	1.15	9.5	15.0	22.0		
12	0.892	560	640	1.14	10.0	16.0	22.5		
12	0.892	545	625	1.15	8.5	14.0	21.0		
12	0.891	550	630	1.15	8.5	14.5	21.0		
12	0.890	555	635	1.14	9.0	14.5	21.5		
12	0.889	555	640	1.15	9.0	15.0	21.5		
12	0.890	560	640	1.14	9.5	15.5	22.0		
12	0.888	555	645	1.16	9.0	14.5	21.5		
12	0.891	550	635	1.15	10.0	16.0	22.5		
12	0.890	555	640	1.15	10.0	16.5	22.5		
12	0.892	540	625	1.16	9.0	14.5	21.5		
12	0.894	540	620	1.15	8.5	15.0	21.0		
12	0.891	550	635	1.15	9.5	15.5	22.0		
12	0.890	555	640	1.15	9.0	14.5	21.5		
12	0.890	555	645	1.16	9.5	15.0	22.0		
12	0.892	560	645	1.15	10.0	16.0	22.5		
12	0.898	555	635	1.14	8.5	14.5	21.0		
12	0.890	555	635	1.14	9.0	14.5	21.5		
12	0.888	560	645	1.15	8.5	14.0	21.0		
12	0.892	550	630	1.15	9.0	15.0	21.5		
12	0.890	540	615	1.14	8.5	14.0	21.0		
12	0.891	540	615	1.14	8.0	14.5	21.0		
12	0.892	530	610	1.15	8.5	13.5	20.5		
12	0.893	550	625	1.14	9.0	14.0	21.5		
12	0.890	530	615	1.16	9.5	14.5	22.0		
12	0.891	540	620	1.15	9.0	14.0	21.5		
12	0.894	530	610	1.15	8.5	14.0	21.0		
12	0.891	530	615	1.16	9.0	14.5	21.5		
12	0.893	550	635	1.15	9.5	15.0	22.0		
12	0.890	530	615	1.16	9.0	14.5	21.5		
12	0.892	535	630	1.18	10.0	16.0	22.5		
12	0.889	555	655	1.18	8.5	14.0	21.0		
12	0.891	535	635	1.19	10.5	17.0	23.0		
12	0.888	550	640	1.16	10.0	16.5	22.5		
12	0.889	545	630	1.16	9.0	14.0	22.0		
12	0.888	560	645	1.15	10.0	15.0	21.0		
12	0.886	545	630	1.16	9.0	14.0	22.0		
12	0.885	540	630	1.17	9.0	14.0	22.5		
12	0.881	555	645	1.16	10.0	15.0	21.0		
12	0.879	540	630	1.17	9.0	14.0	22.5		
12	0.882	550	635	1.15	9.5	14.5	22.0		
12	0.881	540	625	1.16	9.0	14.0	22.5		
12	0.883	535	615	1.15	8.5	13.5	22.5		
12	0.880	555	645	1.16	10.0	15.0	21.5		
12	0.884	545	625	1.15	9.0	14.0	22.0		
12	0.882	555	645	1.16	10.0	15.0	21.5		
12	0.889	545	630	1.16	9.0	14.0	22.0		
12	0.887	550	640	1.16	10.0	15.0	22.0		
12	0.886	545	625	1.15	9.0	14.0	22.0		
12	0.882	540	625	1.16	9.0	14.0	22.5		
12	0.881	545	625	1.15	9.0	14.0	22.0		
12	0.881	545	630	1.16	9.0	14.0	22.0		
12	0.882	550	635	1.15	9.5	14.5	22.0		
12	0.883	555	645	1.16	10.0	15.0	21.5		
12	0.884	545	630	1.16	9.0	14.0	22.0		
12	0.883	545	625	1.15	9.0	14.0	22.0		
12	0.882	545	630	1.16	9.0	14.0	22.0		
12	0.880	540	620	1.15	8.5	13.5	22.5		
12	0.881	550	630	1.15	9.0	14.0	22.0		
12	0.882	550	635	1.15	9.5	14.5	22.0		
12	0.884	550	635	1.15	9.5	14.5	22.0		
12	0.883	545	625	1.15	9.0	14.0	22.0		
12	0.882	545	635	1.17	9.5	14.5	22.0		
12	0.881	550	635	1.15	9.5	14.5	22.0		
12	0.880	550	640	1.16	10.0	15.0	22.0		
12	0.883	550	635	1.15	9.5	14.5	22.0		
12	0.883	555	645	1.16	10.0	15.0	21.5		
12	0.884	560	655	1.17	10.5	15.5	21.0		
12	0.882	555	650	1.17	10.0	15.0	21.5		
12	0.883	550	635	1.15	9.5	14.5	22.0		
12	0.884	545	630	1.16	9.0	14.0	22.0		
12	0.882	540	625	1.16	9.0	14.0	22.5		
12	0.883	535	615	1.15	8.5	13.5	22.5		

12	0.881	545	630	1.16	9.0	14.0	22.0	1.10	1.10
12	0.882	555	645	1.16	10.0	15.0	21.5		
12	0.883	550	640	1.16	10.0	15.0	22.0		
12	0.883	550	635	1.15	9.5	14.5	22.0		
12	0.886	545	625	1.15	9.0	14.0	22.0		
12	0.885	545	630	1.16	9.0	14.0	22.0		
12	0.889	550	635	1.15	9.5	14.5	22.0		
12	0.882	550	630	1.15	9.0	14.0	22.0		
12	0.883	555	640	1.15	10.0	15.0	21.5		
12	0.887	550	635	1.15	9.5	14.5	22.0		
12	0.889	545	625	1.15	9.0	14.0	22.0		
12	0.882	545	625	1.15	9.0	14.0	22.0		
12	0.886	540	620	1.15	8.5	13.5	22.5		
12	0.890	545	630	1.16	9.0	14.0	22.0		
12	0.891	555	645	1.16	10.0	15.0	21.5		
12	0.886	550	640	1.16	10.0	15.0	22.0		
12	0.887	545	630	1.16	9.0	14.0	22.0		
12	0.889	545	635	1.17	9.5	14.5	22.0		
12	0.887	555	645	1.16	10.0	15.0	21.5		
12	0.882	550	640	1.16	10.0	15.0	22.0		
12	0.883	545	635	1.17	9.5	14.5	22.0		
12	0.884	555	645	1.16	10.0	15.0	21.5		
12	0.885	545	630	1.16	9.0	14.0	22.0		
12	0.883	545	635	1.17	9.5	14.5	22.0		
12	0.882	545	630	1.16	9.0	14.0	22.0		
12	0.885	535	615	1.15	8.5	13.5	22.5		
12	0.883	545	625	1.15	9.0	14.0	22.0		
12	0.882	540	620	1.15	8.5	13.5	22.5		
12	0.880	550	640	1.16	10.0	15.0	22.0		
12	0.886	545	630	1.16	9.0	14.0	22.0		
12	0.884	535	615	1.15	8.5	13.5	22.5		
12	0.885	535	615	1.15	8.5	13.5	22.5		
12	0.882	535	615	1.15	8.5	13.5	22.5		
12	0.881	540	630	1.17	9.0	14.0	22.5		
12	0.882	550	640	1.16	10.0	15.0	22.0		
12	0.883	540	630	1.17	9.0	14.0	22.5		
12	0.880	545	630	1.16	9.0	14.0	22.0		
12	0.884	540	625	1.16	9.0	14.0	22.5		
12	0.885	540	630	1.17	9.0	14.0	22.5		
12	0.886	540	630	1.17	9.0	14.0	22.5		
12	0.882	545	635	1.17	9.5	14.0	22.0		
12	0.886	555	650	1.17	10.0	15.0	21.5		
12	0.884	545	630	1.16	9.0	14.0	22.0		
12	0.882	545	630	1.16	9.0	14.0	22.0		
12	0.885	550	635	1.15	9.5	14.5	22.0		
12	0.882	545	635	1.17	9.5	14.5	22.0		
12	0.883	545	630	1.16	9.0	14.0	22.0		
12	0.884	555	645	1.16	10.0	15.0	21.5		
12	0.885	550	640	1.16	10.0	15.0	22.0		
12	0.883	545	630	1.16	9.0	14.0	22.0		
12	0.884	540	630	1.17	9.0	14.0	22.5		
12	0.889	535	615	1.15	8.5	13.5	22.5		
12	0.890	545	635	1.17	9.5	14.5	22.0		
12	0.884	535	615	1.15	8.5	13.5	22.5		
12	0.883	550	640	1.16	10.0	15.0	22.0		
12	0.885	535	615	1.15	8.5	13.5	22.5		
12	0.886	535	615	1.15	8.5	13.5	22.5		
12	0.884	545	635	1.17	9.5	14.5	22.0		
12	0.886	540	625	1.16	9.0	14.0	22.5		
12	0.887	545	625	1.15	9.0	14.0	22.5		
12	0.886	550	630	1.15	9.0	14.0	22.0		
12	0.888	550	640	1.16	10.0	15.0	22.0		
12	0.887	545	630	1.16	9.0	14.0	22.0		
12	0.885	545	635	1.17	9.5	14.5	22.0		
12	0.889	540	630	1.17	9.0	14.0	22.5		
12	0.887	545	630	1.16	9.0	14.0	22.0		
12	0.886	550	640	1.16	10.0	15.0	22.0		
12	0.885	540	630	1.17	9.0	14.0	22.5		
12	0.884	545	635	1.17	9.5	14.5	22.0		
12	0.888	545	630	1.16	9.0	14.0	22.0		
12	0.887	550	635	1.15	9.5	14.5	22.0		
12	0.886	530	615	1.16	8.5	13.5	23.0		
12	0.885	540	625	1.16	9.0	14.0	22.5		
12	0.884	555	645	1.16	10.0	15.0	21.5		
12	0.886	550	645	1.17	10.0	15.0	22.0		
12	0.882	540	630	1.17	9.0	14.0	22.5		

1.05

1.02

1.15

0.97

12	0.884	545	635	1.17	9.5	14.5	22.0		
12	0.885	555	650	1.17	10.0	15.0	21.5		
12	0.886	550	635	1.15	9.5	14.5	22.0		
12	0.887	535	615	1.15	8.5	13.5	22.5		
12	0.884	540	625	1.16	9.0	14.0	22.5		
12	0.886	550	635	1.15	9.5	14.5	22.0		
12	0.889	545	630	1.16	9.0	14.0	22.0		
12	0.887	530	610	1.15	8.5	13.5	23.0		
12	0.886	540	625	1.16	9.0	14.0	22.5		
12	0.884	550	640	1.16	10.0	15.0	22.0		
12	0.889	545	630	1.16	9.0	14.0	22.0		
12	0.888	535	625	1.17	9.0	14.0	22.5		
12	0.887	545	635	1.17	9.5	14.5	22.0		
12	0.893	555	640	1.15	8.0	15.0	21.5		
12	0.892	560	650	1.16	9.5	14.0	22.5		
12	0.887	560	645	1.15	10.0	15.0	21.0		
12	0.887	550	630	1.15	8.0	14.0	21.0		
12	0.893	550	635	1.15	9.0	15.0	22.0		
12	0.892	560	645	1.15	10.0	15.5	21.5		
12	0.889	545	630	1.16	8.5	14.0	21.0		
12	0.890	550	645	1.17	9.5	15.0	20.5		
12	0.885	550	635	1.15	8.0	14.0	21.5		
12	0.888	540	620	1.15	9.0	16.0	22.5		
12	0.886	550	630	1.15	10.0	15.0	21.5		
12	0.889	540	625	1.16	10.0	16.0	21.5		
12	0.890	550	635	1.15	8.0	15.0	22.5		
12	0.892	540	620	1.15	9.5	14.0	22.0		
12	0.894	555	640	1.15	8.0	15.0	21.0		
12	0.882	540	625	1.16	9.0	16.0	21.5		
12	0.893	530	615	1.16	10.0	14.0	22.5		
12	0.892	530	610	1.15	10.0	15.0	22.0		
12	0.895	540	620	1.15	8.0	14.0	20.5	1.14	0.98
12	0.895	530	615	1.16	9.5	15.5	21.0		
12	0.894	530	615	1.16	8.0	14.0	21.5		
12	0.895	530	615	1.16	9.5	15.0	22.0		
12	0.892	545	625	1.15	8.0	14.0	21.5		
12	0.893	535	615	1.15	10.0	16.0	21.0		
12	0.891	535	615	1.15	8.0	14.0	22.0		
12	0.895	535	620	1.16	9.5	15.0	22.0		
12	0.892	555	640	1.15	8.0	14.0	21.5		
12	0.891	545	630	1.16	9.0	15.0	21.0		
12	0.890	535	615	1.15	8.0	14.0	22.0		
12	0.893	535	620	1.16	9.5	15.0	21.5		
12	0.891	555	640	1.15	8.0	16.0	21.5		
12	0.892	540	620	1.15	9.0	14.5	20.0		
12	0.895	525	615	1.17	8.0	15.5	21.0		
12	0.892	535	620	1.16	8.0	14.0	21.5		
12	0.895	535	615	1.15	10.0	15.0	22.5		
12	0.893	545	630	1.16	8.0	14.0	22.0		
12	0.891	545	630	1.16	8.0	15.0	23.0		
12	0.891	545	630	1.16	10.0	14.0	23.5		
12	0.895	545	625	1.15	8.0	16.0	21.0		
12	0.892	550	630	1.15	8.0	14.0	21.0		
12	0.893	535	620	1.16	9.5	15.0	20.5		
12	0.895	535	625	1.17	8.5	14.0	20.0		
12	0.897	550	630	1.15	9.5	15.0	21.0		
12	0.896	540	625	1.16	8.5	14.5	21.0		
12	0.892	540	620	1.15	8.0	15.0	20.5		
12	0.891	555	650	1.17	9.0	14.0	21.0		
12	0.893	560	645	1.15	10.0	15.5	22.5		
12	0.890	560	645	1.15	10.0	14.0	21.5		
12	0.884	545	640	1.17	8.0	16.0	22.0		
12	0.880	555	650	1.17	9.5	14.0	20.0		
12	0.879	560	655	1.17	8.0	15.5	21.0		
12	0.885	550	635	1.15	9.5	13.5	21.0		
12	0.882	560	645	1.15	8.0	13.5	21.5		
12	0.885	540	630	1.17	9.0	14.0	22.0		
12	0.883	555	650	1.17	10.0	15.0	22.0	1.15	0.95
12	0.889	555	650	1.17	8.0	14.0	23.0		
12	0.890	550	640	1.16	9.5	15.5	21.0		
12	0.891	555	640	1.15	8.0	14.5	21.5		
12	0.886	560	645	1.15	9.5	14.5	21.5		
12	0.889	550	630	1.15	8.0	13.5	22.0		
12	0.886	550	630	1.15	9.5	14.0	20.0		
12	0.891	560	650	1.16	8.0	15.0	20.5		
12	0.892	540	625	1.16	10.0	14.0	22.0		

12	0.889	560	645	1.15	8.0	15.0	21.0		
12	0.887	535	620	1.16	9.5	15.0	21.5		
12	0.891	550	645	1.17	8.0	16.0	21.0		
12	0.892	545	625	1.15	9.5	14.0	21.5		
12	0.897	535	625	1.17	8.0	15.0	22.5		
12	0.887	540	625	1.16	9.5	14.0	21.5		
12	0.885	560	645	1.15	8.0	16.0	23.5		
12	0.883	545	625	1.15	9.5	15.5	21.5		
12	0.887	550	640	1.16	8.0	14.0	21.5		
12	0.884	535	625	1.17	9.5	15.0	20.0		
12	0.889	550	630	1.15	8.0	14.0	21.5		
12	0.892	555	640	1.15	10.0	15.0	21.5		
12	0.893	555	640	1.15	10.0	16.5	21.5		
12	0.889	545	630	1.16	8.0	13.5	21.5		
12	0.885	550	635	1.15	9.5	14.0	22.5		
12	0.886	540	625	1.16	8.0	15.0	22.5		
12	0.887	525	615	1.17	10.0	14.0	22.5		
12	0.881	540	620	1.15	8.0	15.0	23.5		
12	0.882	530	615	1.16	9.5	14.0	21.5		
12	0.885	550	630	1.15	8.0	15.5	21.5		
12	0.886	545	630	1.16	9.5	14.0	21.5		
12	0.889	545	625	1.15	8.0	16.0	21.5		
12	0.883	560	645	1.15	10.0	15.0	22.5		
12	0.884	540	625	1.16	8.0	16.0	21.5		
12	0.889	545	635	1.17	9.5	15.0	20.0		
12	0.887	540	620	1.15	8.0	14.0	21.5		
12	0.882	535	625	1.17	9.5	14.0	22.5		
12	0.886	545	625	1.15	8.0	15.0	23.5		
12	0.881	525	610	1.16	9.0	14.5	21.0		
12	0.890	535	615	1.15	10.0	15.5	21.5		
12	0.889	550	630	1.15	8.0	15.5	21.5		
12	0.896	540	625	1.16	9.5	14.0	22.5		
12	0.884	550	630	1.15	8.0	14.0	21.5		
12	0.887	550	630	1.15	9.5	16.0	21.5		
12	0.886	550	635	1.15	8.0	14.0	21.5		
12	0.883	560	645	1.15	10.0	15.0	22.5		
12	0.890	555	640	1.15	10.0	14.0	21.5		
12	0.889	540	620	1.15	8.0	15.5	22.5		
12	0.895	525	615	1.17	9.0	14.0	21.5		
12	0.882	545	625	1.15	9.5	15.5	20.5		
12	0.881	525	615	1.17	8.0	14.0	20.5		
12	0.886	540	620	1.15	9.5	15.5	21.5		
12	0.884	560	645	1.15	8.0	14.0	20.5		
12	0.880	540	625	1.16	10.0	15.5	22.5		
12	0.889	550	630	1.15	10.0	14.0	21.0		
12	0.893	535	615	1.15	8.0	15.0	21.5		
12	0.887	550	630	1.15	9.5	14.0	21.0		
12	0.895	525	610	1.16	8.0	15.5	22.5		
12	0.894	555	640	1.15	9.0	14.0	20.0		
12	0.880	550	635	1.15	10.0	15.5	21.5		
12	0.889	535	620	1.16	8.0	14.0	22.0		
12	0.886	540	620	1.15	9.5	15.5	22.5		
12	0.890	540	625	1.16	8.0	14.0	23.0		
12	0.891	545	630	1.16	8.0	16.0	20.0		
12	0.893	555	645	1.16	9.0	15.0	22.0		
12	0.892	535	625	1.17	8.0	14.0	22.5		
12	0.889	540	625	1.16	9.5	15.0	22.5		
12	0.894	550	635	1.15	9.5	14.0	23.5		
12	0.895	535	620	1.16	8.5	15.5	23.0		
12	0.892	555	645	1.16	8.5	14.0	22.0		
12	0.888	535	620	1.16	9.5	15.5	23.0		
12	0.889	550	635	1.15	8.0	14.0	21.5		
12	0.886	535	625	1.17	9.0	15.0	21.5		
12	0.882	540	625	1.16	8.0	14.0	22.5		
12	0.880	535	625	1.17	10.0	15.0	22.0		
12	0.889	535	625	1.17	10.0	14.0	22.5		
12	0.887	545	625	1.15	8.0	15.5	20.0		
12	0.886	525	615	1.17	9.5	14.0	22.5		
12	0.883	535	620	1.16	8.0	15.5	21.0		
12	0.887	530	610	1.15	9.5	14.0	21.5		
12	0.889	560	650	1.16	8.0	15.5	21.0		
12	0.890	545	630	1.16	9.5	14.0	20.5		
12	0.891	550	635	1.15	8.0	15.5	22.0		
12	0.880	535	620	1.16	9.5	15.0	22.0		
12	0.888	550	635	1.15	10.0	15.5	22.5		
12	0.889	530	610	1.15	8.5	14.0	21.0		

1.16

1.02

1.11

0.80

12	0.891	545	630	1.16	10.5	16.5	23.0		
12	0.879	535	635	1.19	9.5	15.0	22.0		
12	0.890	555	660	1.19	9.0	14.5	21.5		
12	0.890	525	625	1.19	8.0	13.5	20.5		
12	0.891	535	635	1.19	9.0	14.5	21.5		
12	0.881	535	625	1.17	10.0	16.0	22.5		
12	0.889	560	660	1.18	8.5	14.0	21.0		
12	0.890	535	620	1.16	8.5	14.5	21.5		
12	0.891	540	635	1.18	10.5	17.0	23.0		
12	0.881	535	630	1.18	10.0	16.0	22.5		
12	0.890	555	655	1.18	8.5	14.0	21.0		
12	0.892	535	630	1.18	10.0	16.5	23.0		
12	0.891	545	640	1.17	9.5	15.5	22.0		
12	0.884	545	640	1.17	10.0	16.0	22.5		
12	0.892	565	660	1.17	8.0	13.5	20.5		
12	0.891	535	625	1.17	9.0	14.5	21.5		
12	0.893	555	640	1.15	8.5	14.0	21.0		
12	0.887	540	630	1.17	9.0	15.0	22.0		
12	0.895	550	655	1.19	9.5	16.0	22.5		
12	0.894	565	660	1.17	8.0	13.5	20.5		
12	0.896	555	650	1.17	9.5	15.5	22.0		
12	0.887	540	625	1.16	8.5	14.0	21.0		
12	0.883	530	610	1.15	8.0	13.5	20.0		
12	0.888	535	610	1.14	8.0	14.0	20.5		
12	0.891	530	605	1.14	8.5	13.5	20.0		
12	0.887	545	625	1.15	9.5	15.0	22.0		
12	0.895	530	610	1.15	8.0	14.0	20.5		
12	0.894	530	605	1.14	8.5	13.5	20.0		
12	0.896	530	605	1.14	8.5	13.0	20.0		
12	0.887	535	615	1.15	9.0	14.0	20.5		
12	0.883	530	605	1.14	8.5	13.5	20.0		
12	0.888	525	600	1.14	8.0	13.5	20.0		
12	0.891	530	605	1.14	8.0	13.0	20.0		
12	0.891	555	640	1.15	9.5	15.5	22.0		
12	0.886	555	640	1.15	9.0	14.5	21.5		
12	0.892	555	640	1.15	9.5	15.0	22.0		
12	0.890	560	640	1.14	10.0	16.0	22.5		
12	0.891	545	625	1.15	9.0	14.5	21.5		
12	0.887	550	630	1.15	8.5	14.0	21.0		
12	0.888	555	635	1.14	9.0	14.5	21.5		
12	0.891	555	640	1.15	9.0	15.0	21.5		
12	0.889	560	650	1.16	9.5	15.5	22.0		
12	0.893	555	645	1.16	9.0	14.5	21.5		
12	0.895	550	635	1.15	10.0	16.0	22.5		
12	0.894	555	640	1.15	10.0	16.0	22.5		
12	0.892	540	630	1.17	9.0	14.5	21.5		
12	0.890	540	625	1.16	8.5	14.0	21.0		
12	0.888	550	635	1.15	9.5	15.0	22.0		
12	0.891	555	640	1.15	9.0	14.5	21.5		
12	0.892	550	645	1.17	9.5	15.5	22.0		
12	0.893	560	645	1.15	10.0	16.0	22.5		
12	0.890	555	635	1.14	8.5	14.0	21.0		
12	0.894	555	640	1.15	9.0	14.5	21.5		
12	0.893	560	645	1.15	8.5	14.0	21.0		
12	0.887	550	630	1.15	9.0	15.0	21.5		
12	0.889	540	615	1.14	8.5	14.5	21.0		
12	0.891	540	615	1.14	8.5	14.0	21.0		
12	0.890	540	630	1.17	8.0	13.5	20.5		
12	0.887	540	625	1.16	9.0	14.5	21.5		
12	0.889	555	650	1.17	10.0	16.0	22.5		
12	0.888	545	640	1.17	8.5	14.0	21.0		
12	0.891	555	660	1.19	10.0	16.0	22.5		
12	0.892	545	635	1.17	10.0	16.5	22.5		
12	0.890	560	650	1.16	8.5	14.0	21.0		
12	0.891	535	620	1.16	9.0	14.5	21.5		
12	0.893	540	625	1.16	10.5	17.0	23.5		
12	0.886	540	625	1.16	10.0	16.0	22.5		
12	0.890	550	645	1.17	8.5	14.0	21.0		
12	0.889	560	650	1.16	9.0	14.5	21.5		
12	0.890	560	650	1.16	8.5	14.0	21.0		
12	0.889	560	650	1.16	9.0	15.0	21.5		
12	0.893	560	655	1.17	9.0	14.5	21.5		
12	0.890	560	665	1.19	9.0	15.0	21.5		
12	0.892	560	655	1.17	9.5	14.5	21.5		
12	0.895	555	635	1.14	9.0	14.5	21.5		
12	0.891	560	640	1.14	8.5	14.0	21.0		

1.11

0.80

1.15

0.85

12	0.890	545	640	1.17	8.0	13.5	20.0	1.15	0.85
12	0.894	545	640	1.17	8.5	14.0	21.0		
12	0.890	560	650	1.16	10.0	15.5	22.5		
12	0.889	545	625	1.15	8.5	14.0	21.0		
12	0.891	550	640	1.16	9.0	14.5	21.5		
12	0.885	560	645	1.15	8.5	14.0	21.0		
12	0.887	550	635	1.15	9.5	15.5	22.0		
12	0.891	535	615	1.15	8.5	14.0	21.0		
12	0.889	550	645	1.17	9.0	14.5	21.5		
12	0.890	555	640	1.15	8.5	14.0	21.0		
12	0.892	540	635	1.18	9.0	15.0	21.5		
12	0.891	540	635	1.18	10.0	16.0	22.5		
12	0.889	545	635	1.17	8.0	14.0	20.0		
12	0.893	550	630	1.15	8.5	14.0	21.0		
12	0.891	540	615	1.14	9.5	16.0	22.5		
12	0.892	535	610	1.14	8.0	13.5	20.0		
12	0.890	545	615	1.13	9.0	14.5	21.5		
12	0.890	550	635	1.15	9.0	15.0	21.5		
12	0.889	560	645	1.15	8.5	14.0	21.0		
12	0.891	535	620	1.16	9.5	15.0	22.0		
12	0.889	540	630	1.17	10.0	15.5	22.5		
12	0.888	545	640	1.17	10.0	16.0	22.5		
12	0.892	530	620	1.17	8.5	14.0	21.0		
12	0.890	545	635	1.17	9.0	15.0	22.0		
12	0.891	560	660	1.18	8.5	14.0	21.0		
12	0.893	565	665	1.18	8.0	13.5	20.5		
12	0.890	555	655	1.18	9.0	15.0	21.5		
12	0.894	550	625	1.14	9.0	14.5	21.5		
12	0.896	560	635	1.13	8.5	14.0	21.0		
12	0.892	530	610	1.15	9.0	14.0	21.5		
12	0.889	530	615	1.16	9.5	15.0	21.5		
12	0.892	550	635	1.15	9.0	14.0	21.5		
12	0.891	530	615	1.16	8.5	13.5	21.0		
12	0.894	535	630	1.18	9.5	14.5	22.0		
12	0.891	555	655	1.18	9.0	15.0	21.5		
12	0.895	535	635	1.19	9.5	14.5	22.0		
12	0.893	550	640	1.16	10.0	16.0	22.5		
12	0.890	555	640	1.15	9.5	15.5	22.0		
12	0.892	565	645	1.14	9.0	14.5	21.5		
12	0.889	545	630	1.16	9.5	15.0	22.0		
12	0.892	555	635	1.14	8.0	13.5	20.5		
12	0.889	545	630	1.16	9.0	14.0	22.0		
12	0.888	560	645	1.15	10.0	15.0	21.0		
12	0.886	545	630	1.16	9.0	14.0	22.0		
12	0.885	540	625	1.16	9.0	14.0	22.5		
12	0.881	555	645	1.16	10.0	15.0	21.0		
12	0.879	540	625	1.16	9.0	14.0	22.5		
12	0.882	550	635	1.15	9.5	14.5	22.0		
12	0.881	540	625	1.16	9.0	14.0	22.5		
12	0.883	535	615	1.15	8.5	13.5	22.5		
12	0.880	555	645	1.16	10.0	15.0	21.5		
12	0.884	545	625	1.15	9.0	14.0	22.0		
12	0.882	555	645	1.16	10.0	15.0	21.5		
12	0.889	545	630	1.16	9.0	14.0	22.0		
12	0.887	550	640	1.16	10.0	15.0	22.0		
12	0.886	545	625	1.15	9.0	14.0	22.0		
12	0.882	540	625	1.16	9.0	14.0	22.5		
12	0.881	545	625	1.15	9.0	14.0	22.0		
12	0.881	545	630	1.16	9.0	14.0	22.0		
12	0.882	550	635	1.15	9.5	14.5	22.0		
12	0.883	555	645	1.16	10.0	15.0	21.5		
12	0.884	545	630	1.16	9.0	14.0	22.0		
12	0.883	545	625	1.15	9.0	14.0	22.0		
12	0.882	545	630	1.16	9.0	14.0	22.0		
12	0.880	540	620	1.15	8.5	13.5	22.5		
12	0.881	550	630	1.15	9.0	14.0	22.0		
12	0.882	550	635	1.15	9.5	14.5	22.0		
12	0.884	550	635	1.15	9.5	14.5	22.0		
12	0.883	545	625	1.15	9.0	14.0	22.0		
12	0.882	545	630	1.16	9.5	14.5	22.0		
12	0.881	550	635	1.15	9.5	14.5	22.0		
12	0.880	550	640	1.16	10.0	15.0	22.0		
12	0.883	550	635	1.15	9.5	14.5	22.0		
12	0.883	555	645	1.16	10.0	15.0	21.5		
12	0.884	560	645	1.15	10.5	15.5	21.0		
12	0.882	555	640	1.15	10.0	15.0	21.5		

12	0.883	550	635	1.15	9.5	14.5	22.0	1.10	0.84
12	0.884	545	630	1.16	9.0	14.0	22.0		
12	0.882	540	625	1.16	9.0	14.0	22.5		
12	0.883	535	615	1.15	8.5	13.5	22.5		
12	0.881	545	630	1.16	9.0	14.0	22.0		
12	0.882	555	645	1.16	10.0	15.0	21.5		
12	0.883	550	640	1.16	10.0	15.0	22.0		
12	0.883	550	635	1.15	9.5	14.5	22.0		
12	0.886	545	625	1.15	9.0	14.0	22.0		
12	0.885	545	630	1.16	9.0	14.0	22.0		
12	0.889	550	635	1.15	9.5	14.5	22.0		
12	0.882	550	630	1.15	9.0	14.0	22.0		
12	0.883	555	640	1.15	10.0	15.0	21.5		
12	0.887	550	635	1.15	9.5	14.5	22.0		
12	0.889	545	625	1.15	9.0	14.0	22.0		
12	0.882	545	625	1.15	9.0	14.0	22.0		
12	0.886	540	620	1.15	8.5	13.5	22.5		
12	0.890	545	630	1.16	9.0	14.0	22.0		
12	0.891	555	645	1.16	10.0	15.0	21.5		
12	0.886	550	640	1.16	10.0	15.0	22.0		
12	0.887	545	630	1.16	9.0	14.0	22.0		
12	0.889	545	630	1.16	9.5	14.5	22.0		
12	0.887	555	645	1.16	10.0	15.0	21.5		
12	0.882	550	640	1.16	10.0	15.0	22.0		
12	0.883	545	630	1.16	9.5	14.5	22.0		
12	0.884	555	645	1.16	10.0	15.0	21.5		
12	0.885	545	630	1.16	9.0	14.0	22.0		
12	0.883	545	630	1.16	9.5	14.5	22.0		
12	0.882	545	630	1.16	9.0	14.0	22.0		
12	0.885	535	615	1.15	8.5	13.5	22.5		
12	0.883	545	625	1.15	9.0	14.0	22.0		
12	0.882	540	620	1.15	8.5	13.5	22.5		
12	0.880	550	640	1.16	10.0	15.0	22.0		
12	0.886	545	630	1.16	9.0	14.0	22.0		
12	0.884	535	615	1.15	8.5	13.5	22.5		
12	0.885	535	615	1.15	8.5	13.5	22.5		
12	0.882	535	615	1.15	8.5	13.5	22.5		
12	0.881	540	625	1.16	9.0	14.0	22.5		
12	0.882	550	640	1.16	10.0	15.0	22.0		
12	0.883	540	625	1.16	9.0	14.0	22.5		
12	0.880	545	630	1.16	9.0	14.0	22.0		
12	0.884	540	625	1.16	9.0	14.0	22.5		
12	0.885	540	620	1.15	9.0	14.0	22.5		
12	0.886	540	625	1.16	9.0	14.0	22.5		
12	0.882	545	630	1.16	9.5	14.0	22.0		
12	0.886	555	645	1.16	10.0	15.0	21.5		
12	0.884	545	630	1.16	9.0	14.0	22.0		
12	0.882	545	630	1.16	9.0	14.0	22.0		
12	0.885	550	635	1.15	9.5	14.5	22.0		
12	0.882	545	630	1.16	9.5	14.5	22.0		
12	0.883	545	630	1.16	9.0	14.0	22.0		
12	0.884	555	645	1.16	10.0	15.0	21.5		
12	0.885	550	640	1.16	10.0	15.0	22.0		
12	0.883	545	630	1.16	9.0	14.0	22.0		
12	0.884	540	625	1.16	9.0	14.0	22.5		
12	0.889	535	615	1.15	8.5	13.5	22.5		
12	0.890	545	630	1.16	9.5	14.5	22.0		
12	0.884	535	615	1.15	8.5	13.5	22.5		
12	0.883	550	640	1.16	10.0	15.0	22.0		
12	0.885	535	615	1.15	8.5	13.5	22.5		
12	0.886	535	615	1.15	8.5	13.5	22.5		
12	0.884	545	625	1.15	9.5	14.5	22.0		
12	0.886	540	625	1.16	9.0	14.0	22.5		
12	0.887	545	625	1.15	9.0	14.0	22.5		
12	0.886	550	630	1.15	9.0	14.0	22.0		
12	0.888	550	640	1.16	10.0	15.0	22.0		
12	0.887	545	630	1.16	9.0	14.0	22.0		
12	0.885	545	630	1.16	9.5	14.5	22.0		
12	0.889	540	625	1.16	9.0	14.0	22.5		
12	0.887	545	630	1.16	9.0	14.0	22.0		
12	0.886	550	640	1.16	10.0	15.0	22.0		
12	0.885	540	620	1.15	9.0	14.0	22.5		
12	0.884	545	630	1.16	9.5	14.5	22.0		
12	0.888	545	630	1.16	9.0	14.0	22.0		
12	0.887	550	635	1.15	9.5	14.5	22.0		
12	0.886	530	615	1.16	8.5	13.5	23.0		

12	0.885	540	625	1.16	9.0	14.0	22.5	1.12	0.85		
12	0.886	545	630	1.16	9.0	14.0	22.0				
12	0.887	545	630	1.16	9.5	14.5	22.0				
12	0.885	535	610	1.14	8.5	13.5	22.5				
12	0.890	540	625	1.16	9.0	14.0	22.5				
12	0.886	555	645	1.16	10.0	15.0	21.5				
12	0.887	550	635	1.15	9.5	14.5	21.5				
12	0.885	540	625	1.16	9.0	14.0	22.5				
12	0.891	545	630	1.16	9.0	14.0	22.0				
12	0.889	550	635	1.15	9.5	14.5	21.5				
12	0.887	545	625	1.15	9.5	14.5	22.0				
12	0.888	540	620	1.15	9.0	14.0	22.5				
12	0.886	535	615	1.15	8.5	13.5	22.5				
12	0.887	545	630	1.16	9.0	14.0	22.0				
12	0.889	550	635	1.15	9.5	14.5	21.5				
12	0.885	540	625	1.16	9.0	14.0	22.5				
12	0.888	545	630	1.16	9.0	14.0	22.0				
12	0.887	545	630	1.16	9.0	14.0	22.0				
12	0.888	540	625	1.16	9.0	14.0	22.5				
12	0.889	545	625	1.15	9.5	14.5	22.0				
12	0.885	545	630	1.16	9.0	14.0	22.0				
12	0.884	560	650	1.16	8.0	14.0	20.0			1.00	0.80
12	0.879	540	625	1.16	9.5	15.0	22.5				
12	0.880	535	620	1.16	8.5	16.0	21.0				
12	0.888	555	640	1.15	9.0	14.5	21.0				
12	0.883	545	635	1.17	10.0	15.0	21.0				
12	0.880	550	625	1.14	8.0	14.5	22.5				
12	0.883	540	630	1.17	9.0	15.0	21.0				
12	0.889	540	630	1.17	10.0	14.0	22.5				
12	0.884	545	630	1.16	10.0	15.5	22.5				
12	0.882	555	630	1.14	8.0	14.0	23.5				
12	0.881	555	625	1.13	9.5	15.0	21.5				
12	0.883	550	635	1.15	8.0	14.0	21.5				
12	0.886	555	650	1.17	9.5	15.0	22.5				
12	0.881	540	625	1.16	8.0	14.0	21.0				
12	0.880	530	620	1.17	10.0	16.0	21.5				
12	0.885	525	615	1.17	10.0	14.0	21.0				
12	0.880	540	615	1.14	8.0	15.5	21.0				
12	0.879	535	620	1.16	9.0	14.5	22.5				
12	0.886	560	625	1.12	8.5	14.5	21.5				
12	0.883	540	625	1.16	9.5	15.5	21.5				
12	0.880	545	630	1.16	8.0	14.0	20.0				
12	0.881	545	630	1.16	9.5	15.0	21.0				
12	0.889	560	630	1.13	8.0	14.0	21.5				
12	0.880	545	625	1.15	9.0	16.0	22.5				
12	0.881	545	625	1.15	10.0	15.0	21.0				
12	0.882	550	640	1.16	8.0	16.0	22.5				
12	0.882	555	620	1.12	9.5	16.0	21.5				
12	0.881	535	615	1.15	8.5	14.5	22.0				
12	0.880	540	625	1.16	9.5	15.0	22.5				
12	0.885	540	630	1.17	8.0	14.5	20.0				
12	0.882	535	620	1.16	10.0	15.0	20.0				
12	0.882	540	615	1.14	8.0	14.0	21.0				