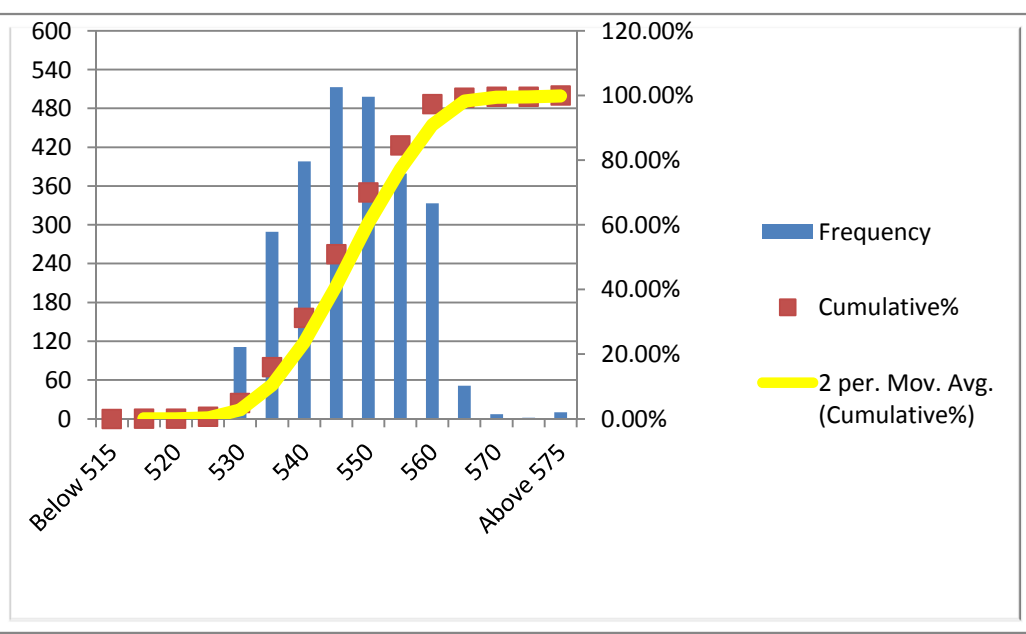


Campaign Length: 02.05.16 to 10.05.16
 Total Production: 13965.76 MT
 Billet Rolled: KSC-225,GSI-189,ELS-191,JSW-182,PGT-208,,SAL-243,SML-235
 Product: Xtreme 500W (4x10 mm)

YIELD STRENGTH	
Mean	547.387
Median	545
Mode	545
Std. Dev.	9.719
Min	515
Max	640
Count	2608

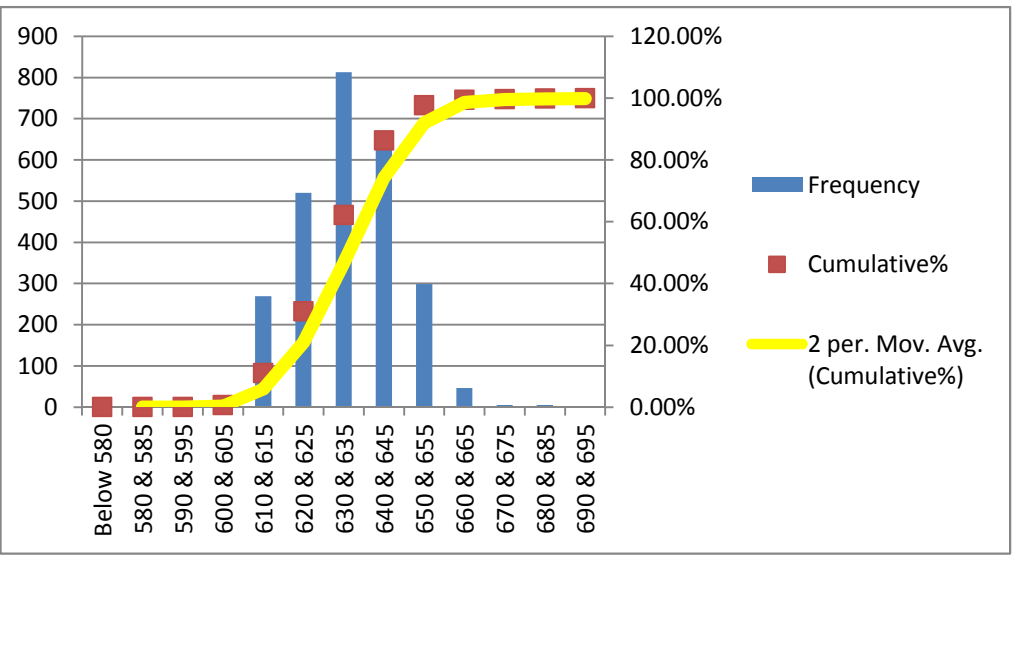
Bin	Frequency	%	Cumulative%
Below 515	0	0.00%	0.00%
515	1	0.04%	0.04%
520	0	0.00%	0.04%
525	16	0.61%	0.65%
530	111	4.26%	4.91%
535	289	11.08%	15.99%
540	398	15.25%	31.25%
545	513	19.67%	50.92%
550	498	19.10%	70.02%
555	379	14.53%	84.55%
560	333	12.77%	97.32%
565	51	1.96%	99.27%
570	7	0.27%	99.54%
575	2	0.08%	99.62%
Above 575	10	0.38%	100.00%
Total	2608		



MINIMUM REQUIREMENTS
 As per ISO 6935-2: 500 Mpa
 As per ASTM A-615: 420 Mpa

ULTIMATE STRENGTH	
Mean	633.796
Median	635
Mode	635
Std. Dev.	12.70
Min	595
Max	710
Count	2608

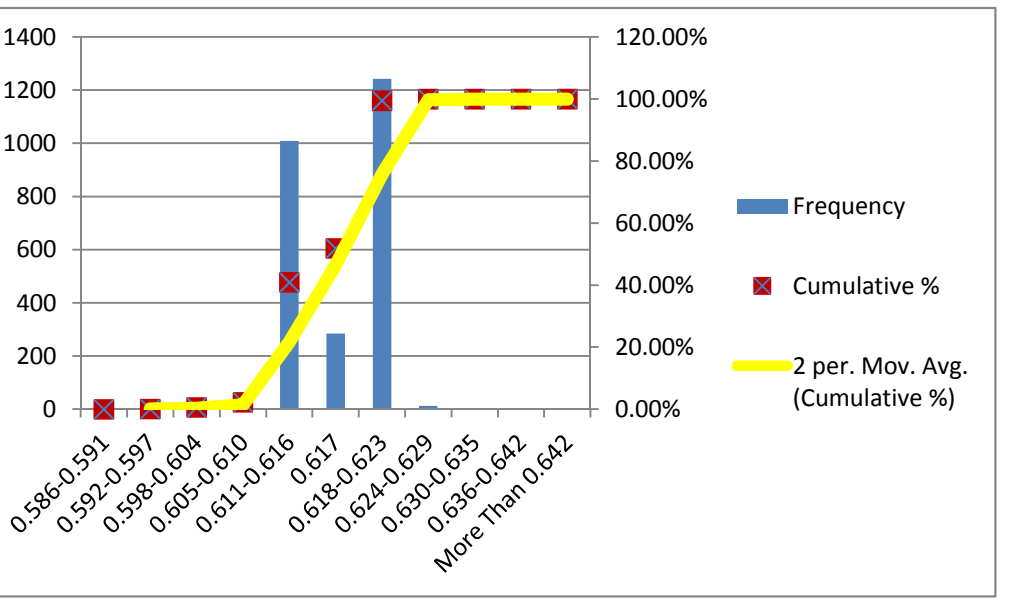
Bin	Frequency	%	Cumulative%
Below 580	0	0.00%	0.00%
580 & 585	0	0.00%	0.00%
590 & 595	1	0.04%	0.04%
600 & 605	17	0.65%	0.69%
610 & 615	369	13.93%	14.62%
620 & 625	520	19.54%	34.16%
630 & 635	813	31.17%	65.33%
640 & 645	629	24.12%	89.45%
650 & 655	299	11.46%	100.91%
660 & 665	46	1.76%	102.67%
670 & 675	5	0.19%	102.86%
680 & 685	5	0.19%	103.05%
690 & 695	1	0.04%	103.09%
700 & 705	1	0.04%	103.13%
710 & 715	2	0.08%	103.21%
Above 715	0	0.00%	103.21%
Total	2608		



MINIMUM REQUIREMENTS
 As per ISO 6935-2: 575 Mpa
 As per ASTM A-615: 620 Mpa

UNIT WEIGHT	
Mean	0.617
Median	0.617
Mode	0.618
Std. Dev.	0.003
Min	0.594
Max	0.630
Count	2608

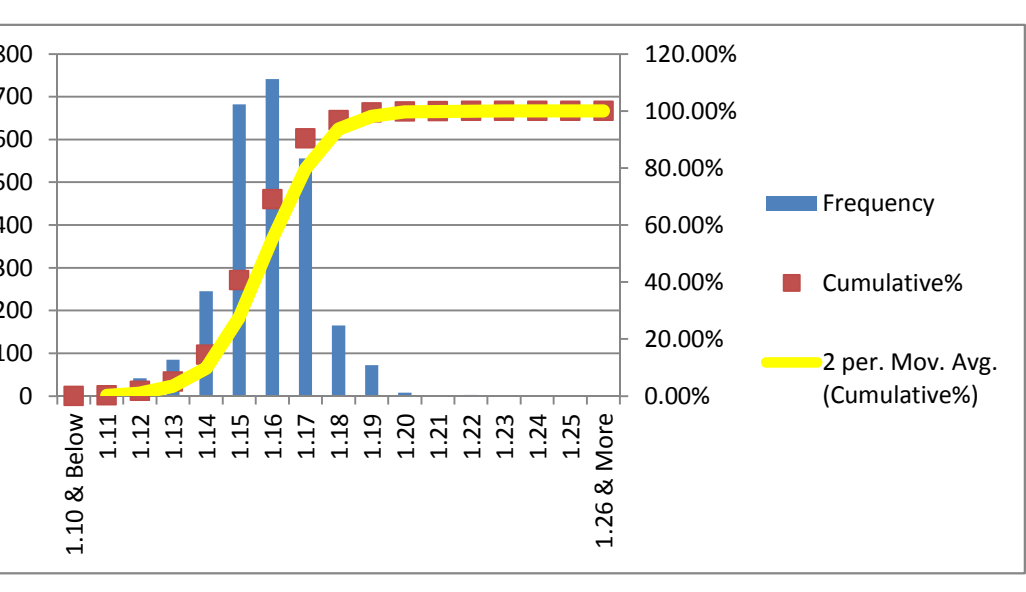
Bin	Frequency	%	Cumulative%
Less Than 0.596	0	0.00%	0.00%
0.596-0.597	0	0.00%	0.00%
0.597-0.598	2	0.08%	0.08%
0.598-0.604	12	0.46%	0.54%
0.605-0.610	44	1.69%	2.22%
0.611-0.616	1009	38.69%	40.91%
0.617	1087	41.71%	82.62%
0.618-0.623	1243	47.68%	130.30%
0.624-0.629	12	0.46%	130.76%
0.630-0.635	1	0.04%	130.80%
0.636-0.642	0	0.00%	130.80%
More Than 0.642	0	0.00%	130.80%
Total	2608		



MINIMUM REQUIREMENTS
 As per ISO 6935-2: + 6%
 As per ASTM A-615: -6%

T/Y RATIO	
Mean	1.158
Median	1.16
Mode	1.15
Std. Dev.	0.014
Min	1.10
Max	1.22
Count	2608

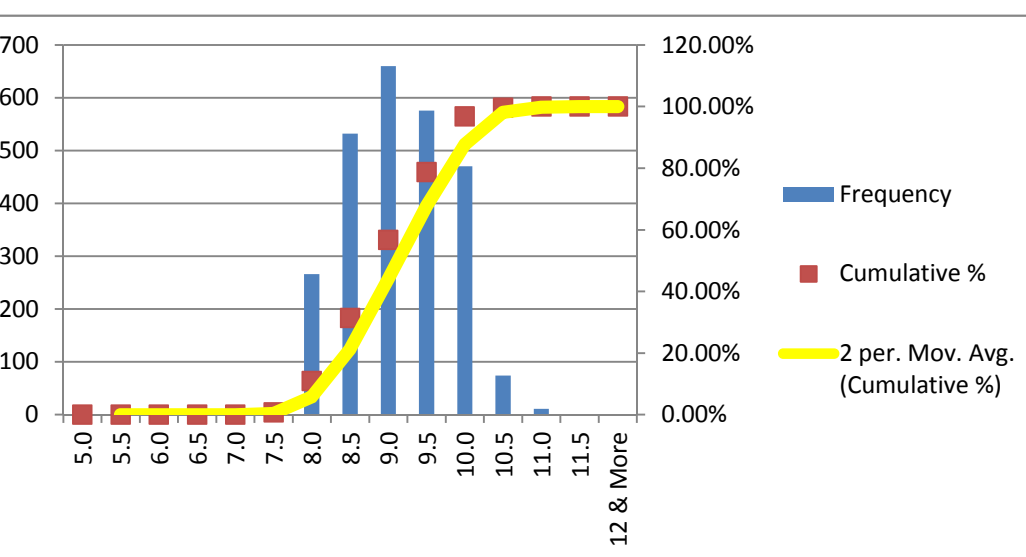
Bin	Frequency	%	Cumulative%
1.10 & Below	3	0.12%	0.12%
1.11	4	0.15%	0.27%
1.12	42	1.61%	1.88%
1.13	85	3.26%	5.14%
1.14	245	9.39%	14.53%
1.15	682	26.15%	40.68%
1.16	741	28.41%	69.10%
1.17	556	21.32%	90.41%
1.18	165	6.33%	96.74%
1.19	72	2.76%	99.50%
1.20	8	0.31%	99.81%
1.21	2	0.08%	99.89%
1.22	3	0.12%	100.00%
1.23	0	0.00%	100.00%
1.24	0	0.00%	100.00%
1.25	0	0.00%	100.00%
1.26 & More	0	0.00%	100.00%
Total	2608		



MINIMUM REQUIREMENTS
 As per ISO 6935-2: T/Y: 1.15
 As per ASTM A-615: Not Required

ELN. AT MAX. FORCE (Ag)(GL-200 mm)	
Mean	9.127
Median	9.0
Mode	9.0
Std. Dev.	0.685
Min	7.5
Max	11.0
Count	2608

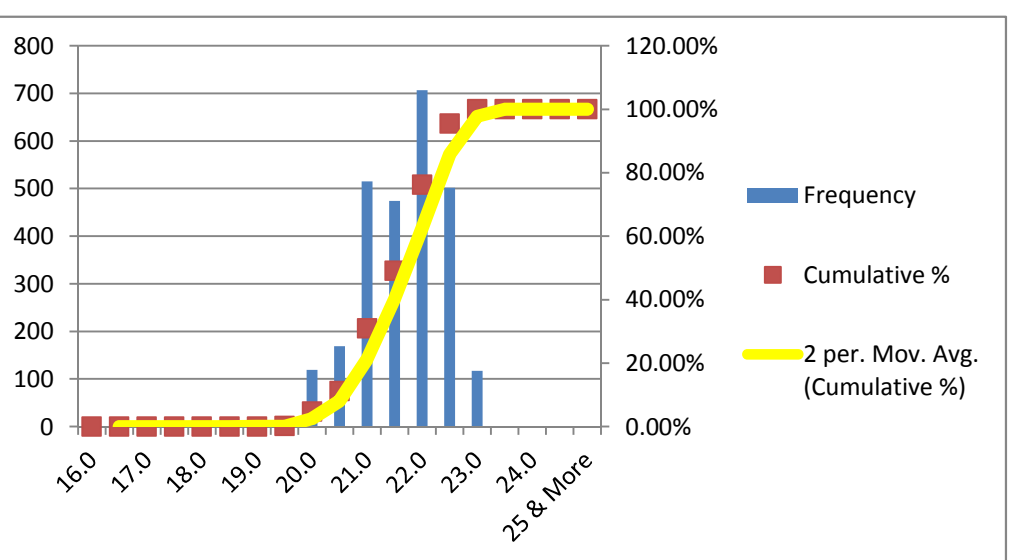
Bin	Frequency	%	Cumulative %
5.0	0	0.00%	0.00%
5.5	0	0.00%	0.00%
6.0	0	0.00%	0.00%
6.5	0	0.00%	0.00%
7.0	0	0.00%	0.00%
7.5	19	0.73%	0.73%
8.0	266	10.20%	10.93%
8.5	532	20.40%	31.33%
9.0	1660	63.31%	94.64%
9.5	576	22.09%	116.73%
10.0	470	18.02%	134.75%
10.5	74	2.84%	137.59%
11.0	11	0.42%	138.01%
11.5	0	0.00%	138.01%
12 & More	0	0.00%	138.01%
Total	2608		



MINIMUM REQUIREMENTS
 As per ISO 6935-2: 7%
 As per ASTM A-615: Not Required

ELN. AFTER FRACTURE (A5)(GL-50)	
Mean	21.659
Median	22.0
Mode	22.0
Std. Dev.	0.749
Min	19.0
Max	23.0
Count	2608

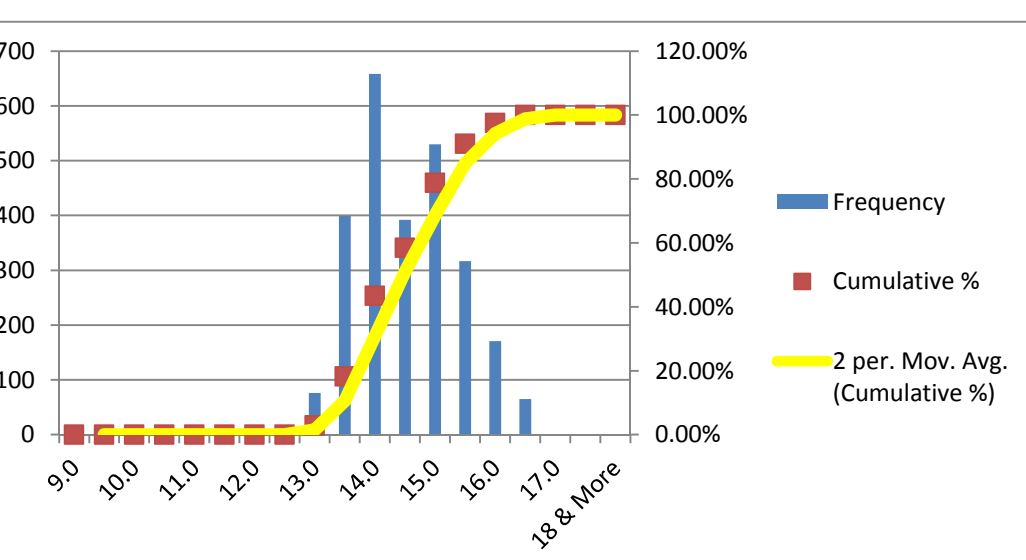
Bin	Frequency	%	Cumulative %
16.0	0	0.00%	0.00%
16.5	0	0.00%	0.00%
17.0	0	0.00%	0.00%
17.5	0	0.00%	0.00%
18.0	0	0.00%	0.00%
18.5	0	0.00%	0.00%
19.0	1	0.04%	0.04%
19.5	4	0.15%	0.19%
20.0	119	4.56%	4.75%
20.5	169	6.48%	11.23%
21.0	515	19.75%	30.98%
21.5	474	18.13%	49.11%
22.0	707	27.11%	76.22%
22.5	502	19.25%	95.47%
23.0	117	4.49%	100.00%
23.5	0	0.00%	100.00%
24.0	0	0.00%	100.00%
24.5	0	0.00%	100.00%
25 & More	0	0.00%	100.00%
Total	2608		



MINIMUM REQUIREMENTS
 As per ISO 6935-2: 14%

ELN. AFTER FRACTURE (A)(GL-203.2 mm)	
Mean	14.549
Median	14.5
Mode	14.0
Std. Dev.	0.836
Min	13.0
Max	16.5
Count	2608

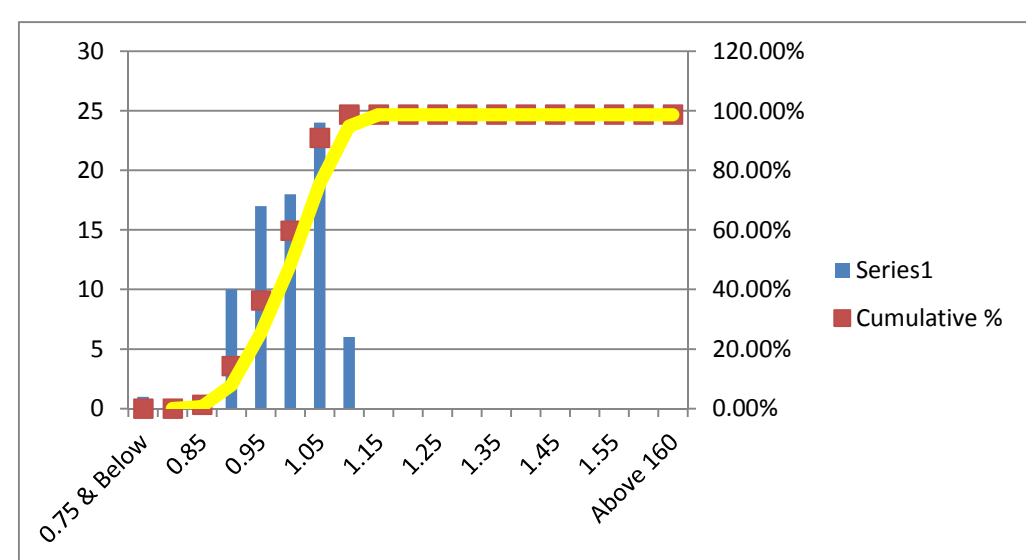
Bin	Frequency	%	Cumulative %
9.0	0	0.00%	0.00%
9.5	0	0.00%	0.00%
10.0	0	0.00%	0.00%
10.5	0	0.00%	0.00%
11.0	0	0.00%	0.00%
11.5	0	0.00%	0.00%
12.0	0	0.00%	0.00%
12.5	0	0.00%	0.00%
13.0	76	2.91%	2.91%
13.5	399	15.30%	18.21%
14.0	1458	55.91%	74.12%
14.5	392	15.03%	89.15%
15.0	530	20.32%	109.47%
15.5	317	12.15%	121.62%
16.0	171	6.56%	128.18%
16.5	65	2.49%	130.67%
17.0	0	0.00%	130.67%
17.5	0	0.00%	130.67%
18 & More	0	0.00%	130.67%
Total	2608		



MINIMUM REQUIREMENTS
 As per ASTM A-615: 9%

TRANSVERSE RIB HEIGHT	
Mean	0.960
Median	0.96
Mode	1.0
Std. Dev.	0.073
Min	0.62
Max	1.05
Count	77

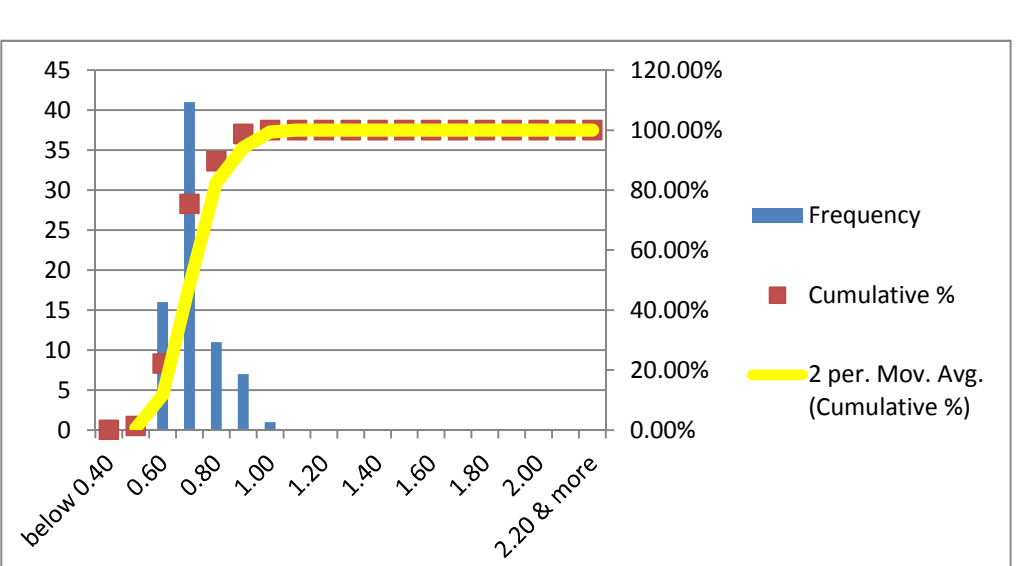
Bin	Frequency	%	Cumulative %
0.75 & Below	1	1.30%	0.00%
0.80	0	0.00%	0.00%
0.85	1	1.30%	1.30%
0.90	10	12.99%	14.29%
0.95	17	22.08%	36.36%
1.00	18	23.38%	59.74%
1.05	24	31.17%	90.91%
1.10	6	7.79%	98.70%
1.15	0	0.00%	98.70%
1.20	0	0.00%	98.70%
1.25	0	0.00%	98.70%
1.30	0	0.00%	98.70%
1.35	0	0.00%	98.70%
1.40	0	0.00%	98.70%
1.45	0	0.00%	98.70%
1.50	0	0.00%	98.70%
1.55	0	0.00%	98.70%
1.60	0	0.00%	98.70%
Above 160	0	0.00%	98.70%
Total	77		



MINIMUM REQUIREMENTS
 As per ISO 6935-2: 0.65 mm
 As per ASTM A-615: 0.38 mm

LONGITUDINAL RIB HEIGHT	
Mean	0.656
Median	0.65
Mode	0.7
Std. Dev.	0.088
Min	0.41
Max	0.95
Count	77

Bin	Frequency	%	Cumulative %
below 0.40	0	0.00%	0.00%
0.50	1	1.30%	1.30%
0.60	16	20.78%	22.08%
0.70	41	53.25%	75.32%
0.80	11	14.29%	89.61%
0.90	7	9.09%	98.70%
1.00	1	1.30%	100.00%
1.10	0	0.00%	100.00%
1.20	0	0.00%	100.00%
1.30	0	0.00%	100.00%
1.40	0	0.00%	100.00%
1.50	0	0.00%	100.00%
1.60	0	0.00%	100.00%
1.70	0	0.00%	100.00%
1.80	0	0.00%	100.00%
1.90	0	0.00%	100.00%
2.00	0	0.00%	100.00%
2.10	0	0.00%	100.00%
2.20 & more	0	0.00%	100.00%
Total	77		



MAXIMUM REQUIREMENTS
 As per ISO 6935-2: 1.50 mm

BEND TEST:
 ALL THE SAMPLES IN THIS CAMPAIGN PASSED THE BEND TEST MAINTAINING MANDREL DIA 3D

MINIMUM REQUIREMENTS
 As per ISO 6935-2: 3D
 As per ASTM A-615: 3.5D

REBEND TEST:
 ALL THE SAMPLES IN THIS CAMPAIGN PASSED THE REBEND TEST MAINTAINING MANDREL DIA 4D

MINIMUM REQUIREMENTS
 As per ISO 6935-2: 5D
 As per ASTM A-615: Not Required

Nominal Diameter D	Unit Weight	Yield or Proof Strength R _{eH}	Ultimate Tensile Strength R _m	T/Y Ratio	% Total Elongation at Maximum Force A _{gt}	% Elongation after Fracture A	% Elongation after Fracture A	Height of Transverse Rib	Height of Longitudinal Rib
(mm)	(Kg/m)	(MPa)	(MPa)		GL:200mm	GL: 203.2 mm	GL: 5D	mm	mm
10	0.597	570	625	1.10	8.0	14.0	22.0	0.88	0.62
10	0.594	545	620	1.14	8.5	13.5	20.0		
10	0.600	540	615	1.14	9.0	13.0	21.0		
10	0.600	530	625	1.18	8.5	14.0	21.0		
10	0.601	530	625	1.18	8.0	14.0	22.0		
10	0.604	540	630	1.17	9.5	15.0	23.0		
10	0.605	545	615	1.13	8.0	14.0	20.0		
10	0.607	550	640	1.16	9.5	13.5	20.5		
10	0.609	555	640	1.15	8.0	14.0	23.0		
10	0.612	545	625	1.15	8.0	13.5	21.0		
10	0.611	545	630	1.16	9.5	14.0	23.0		
10	0.611	550	630	1.15	8.0	13.5	21.0		
10	0.604	550	635	1.15	9.5	13.0	21.0		
10	0.607	545	635	1.17	8.0	14.0	22.0		
10	0.606	550	630	1.15	9.5	13.5	21.0		
10	0.608	535	630	1.18	8.0	15.0	23.0		
10	0.604	545	615	1.13	9.5	14.0	20.0		
10	0.606	545	610	1.12	8.0	14.0	22.0		
10	0.611	540	630	1.17	9.5	13.0	22.0		
10	0.611	535	620	1.16	8.0	13.0	20.0		
10	0.609	530	615	1.16	9.5	14.0	22.0		
10	0.610	540	610	1.13	8.0	15.0	21.0		
10	0.611	540	610	1.13	9.5	14.5	21.0		
10	0.612	540	620	1.15	8.0	13.5	21.0		
10	0.609	540	615	1.14	8.0	13.0	21.0		
10	0.611	565	650	1.15	9.0	14.0	22.0		
10	0.613	540	630	1.17	9.0	13.5	23.0		
10	0.605	550	620	1.13	9.5	14.0	21.0		
10	0.619	550	635	1.15	8.5	13.5	22.0		
10	0.616	570	625	1.10	9.5	14.0	20.0		
10	0.622	540	625	1.16	8.0	13.5	22.0		
10	0.620	530	615	1.16	9.0	14.0	22.0		
10	0.620	535	625	1.17	8.0	14.0	22.5		
10	0.617	530	625	1.18	9.5	13.5	22.5		
10	0.620	540	605	1.12	8.0	14.0	22.0		
10	0.622	530	600	1.13	9.5	13.5	22.5		
10	0.620	530	610	1.15	8.0	14.0	21.5		
10	0.619	535	600	1.12	9.0	15.0	21.0		
10	0.623	535	615	1.15	8.0	14.0	22.5		
10	0.612	530	615	1.16	9.0	13.5	22.0		
10	0.618	535	615	1.15	8.0	14.0	22.0		
10	0.615	535	635	1.19	8.5	13.5	20.5		
10	0.613	560	615	1.10	8.0	14.0	20.0		
10	0.619	535	635	1.19	9.0	15.0	20.5		
10	0.622	560	630	1.13	10.0	15.0	20.5		
10	0.620	550	610	1.11	8.0	14.0	21.0		
10	0.620	535	605	1.13	9.5	13.5	23.0		
10	0.618	535	615	1.15	8.5	14.0	20.5		
10	0.619	540	610	1.13	9.0	13.5	22.5		
10	0.613	560	620	1.11	8.5	14.0	22.5		
10	0.619	530	615	1.16	9.5	13.5	20.0		
10	0.620	535	610	1.14	8.0	14.0	20.5		
10	0.621	560	640	1.14	8.5	13.5	21.0		
10	0.624	555	640	1.15	9.0	14.5	21.5		
10	0.622	555	635	1.14	9.5	15.0	22.0		
10	0.621	550	625	1.14	9.0	14.5	21.5		
10	0.619	565	645	1.14	8.5	13.5	21.0		
10	0.621	555	635	1.14	9.0	14.0	21.5		
10	0.620	555	630	1.14	8.0	13.5	20.5		
10	0.618	545	630	1.16	9.0	15.0	22.0		
10	0.622	555	645	1.16	8.0	13.5	20.5		
10	0.620	550	625	1.14	10.0	16.0	22.5		
10	0.621	550	630	1.15	8.5	14.0	21.0		
10	0.619	550	630	1.15	8.5	14.5	21.5		
10	0.617	565	640	1.13	8.0	13.5	20.0		
10	0.619	560	640	1.14	8.0	13.0	20.5		
10	0.618	540	630	1.17	9.0	14.5	21.5		
10	0.616	540	630	1.17	9.5	15.0	22.0		
10	0.621	555	635	1.14	8.5	14.5	21.5		
10	0.618	560	640	1.14	8.0	13.5	20.5		
10	0.620	555	635	1.14	8.5	14.0	21.0		

0

10	0.618	550	625	1.14	9.5	15.5	22.0	0.95	0.55
10	0.623	560	635	1.13	8.0	13.0	20.0		
10	0.620	560	630	1.13	8.5	13.5	21.0		
10	0.621	555	625	1.13	9.0	14.0	21.5		
10	0.619	540	625	1.16	9.5	15.0	22.0		
10	0.620	550	630	1.15	9.0	14.0	21.5		
10	0.622	545	620	1.14	9.0	15.5	22.5		
10	0.620	550	630	1.15	8.5	13.5	21.0		
10	0.619	540	615	1.14	9.0	14.5	21.5		
10	0.621	545	625	1.15	9.5	15.0	22.0		
10	0.622	540	620	1.15	9.0	15.0	22.0		
10	0.619	535	615	1.15	8.5	13.5	21.0		
10	0.616	535	615	1.15	8.0	13.0	20.5		
10	0.621	540	620	1.15	9.0	14.5	21.5		
10	0.621	535	610	1.14	8.5	13.0	20.0		
10	0.617	535	615	1.15	8.5	13.5	21.0		
10	0.618	530	615	1.16	9.0	14.5	21.5		
10	0.620	600	685	1.14	10.0	15.5	22.5		
10	0.618	580	665	1.15	9.5	15.0	22.0		
10	0.619	560	640	1.14	9.0	14.5	21.5		
10	0.617	565	645	1.14	8.5	13.5	21.0		
10	0.621	585	665	1.14	9.0	14.5	21.5		
10	0.620	570	655	1.15	9.5	15.0	22.0		
10	0.618	560	640	1.14	8.5	13.5	21.0		
10	0.617	555	635	1.14	9.0	14.5	21.5		
10	0.618	640	710	1.11	8.5	13.0	20.5		
10	0.620	625	710	1.14	8.0	13.0	20.0		
10	0.615	620	700	1.13	8.5	14.0	21.0		
10	0.616	610	695	1.14	8.0	13.5	20.5		
10	0.619	575	650	1.13	9.0	14.5	21.5		
10	0.620	565	650	1.15	9.5	15.0	22.0		
10	0.618	550	630	1.15	9.0	14.5	21.5		
10	0.617	540	620	1.15	9.0	15.0	22.0		
10	0.615	570	650	1.14	8.5	13.5	21.0		
10	0.616	560	650	1.16	8.0	13.0	20.5		
10	0.619	545	620	1.14	8.5	14.0	21.0		
10	0.620	540	615	1.14	9.0	14.5	21.5		
10	0.618	550	635	1.15	10.0	15.5	22.5		
10	0.616	540	620	1.15	10.5	16.0	23.0		
10	0.620	555	640	1.15	9.0	14.5	21.5		
10	0.621	540	615	1.14	9.5	15.0	22.0		
10	0.620	555	635	1.14	8.5	13.5	21.0		
10	0.618	545	630	1.16	9.0	14.5	22.0		
10	0.621	555	640	1.15	8.0	13.0	20.5		
10	0.623	540	620	1.15	10.0	15.5	22.5		
10	0.619	560	640	1.14	8.5	13.5	20.5		
10	0.620	530	600	1.13	8.0	13.0	20.5		
10	0.621	540	615	1.14	8.5	13.5	21.0		
10	0.622	545	620	1.14	9.0	14.5	21.5		
10	0.618	545	625	1.15	9.5	15.0	22.0		
10	0.619	545	620	1.14	9.0	14.5	21.5		
10	0.620	535	610	1.14	8.0	13.5	20.5		
10	0.615	535	615	1.15	9.0	14.5	21.5		
10	0.616	555	645	1.16	8.5	13.5	21.0		
10	0.618	540	630	1.17	10.0	16.0	22.5		
10	0.619	540	635	1.18	9.5	15.0	22.0		
10	0.615	540	635	1.18	10.0	16.5	23.0		
10	0.617	550	635	1.15	10.0	15.5	22.5		
10	0.618	535	620	1.16	9.0	14.5	21.5		
10	0.619	530	615	1.16	8.5	13.5	21.0		
10	0.620	530	610	1.15	8.5	13.5	21.0		
10	0.615	545	625	1.15	10.0	15.5	22.5		
10	0.618	540	625	1.16	9.5	16.0	22.5		
10	0.620	550	635	1.15	9.0	15.0	22.0		
10	0.621	560	645	1.15	9.0	14.5	21.5		
10	0.620	545	635	1.17	9.0	15.0	21.5		
10	0.619	550	635	1.15	9.5	15.5	22.0		
10	0.621	560	645	1.15	9.0	14.0	21.5		
10	0.622	560	650	1.16	8.5	13.5	21.0		
10	0.618	535	615	1.15	8.5	13.5	21.0		
10	0.619	545	630	1.16	10.0	15.5	22.5		
10	0.620	560	645	1.15	8.0	13.0	20.5		
10	0.620	560	635	1.13	8.5	14.0	21.0		
10	0.622	540	615	1.14	9.0	13.5	21.0		
10	0.620	540	620	1.15	8.5	14.0	21.0		
10	0.615	550	625	1.14	10.0	16.0	22.5		

10	0.618	545	625	1.15	10.0	15.5	22.5	0.88	0.65
10	0.620	565	645	1.14	8.0	13.0	20.5		
10	0.619	560	640	1.14	9.5	15.0	22.0		
10	0.617	535	615	1.15	8.5	14.0	21.0		
10	0.618	540	620	1.15	9.0	14.5	21.5		
10	0.620	560	645	1.15	9.0	13.5	21.5		
10	0.621	555	630	1.14	9.0	14.5	21.5		
10	0.619	555	640	1.15	8.5	13.5	21.0		
10	0.618	545	630	1.16	9.5	15.0	22.0		
10	0.617	540	620	1.15	9.0	14.5	21.5		
10	0.619	540	620	1.15	8.5	13.5	21.0		
10	0.620	560	650	1.16	9.0	15.0	21.5		
10	0.618	560	650	1.16	9.5	14.5	22.0		
10	0.619	535	620	1.16	8.5	13.5	21.0		
10	0.620	545	625	1.15	9.0	15.0	21.5		
10	0.621	540	620	1.15	9.0	14.5	21.5		
10	0.621	550	635	1.15	8.5	13.5	21.0		
10	0.619	540	625	1.16	9.0	14.5	21.5		
10	0.618	560	645	1.15	9.5	15.5	22.0		
10	0.617	560	645	1.15	9.5	14.0	21.5		
10	0.619	560	645	1.15	9.5	15.5	22.0		
10	0.622	540	620	1.15	10.0	16.0	22.5		
10	0.620	560	655	1.17	9.0	14.5	21.5		
10	0.617	545	640	1.17	10.0	15.5	22.5		
10	0.615	560	650	1.16	8.5	14.0	21.0		
10	0.612	550	625	1.14	9.0	14.0	21.5		
10	0.615	530	610	1.15	8.5	13.5	22.5		
10	0.618	540	615	1.14	8.5	13.5	22.5		
10	0.617	535	610	1.14	8.5	13.5	22.5		
10	0.613	535	610	1.14	8.5	13.5	22.5		
10	0.618	555	635	1.14	9.5	14.5	21.5		
10	0.619	540	615	1.14	8.5	13.5	22.5		
10	0.617	540	615	1.14	8.5	13.5	22.5		
10	0.615	540	615	1.14	8.5	13.5	22.5		
10	0.618	555	640	1.15	10.0	15.0	21.5		
10	0.619	535	610	1.14	8.5	13.5	22.5		
10	0.617	545	625	1.15	9.0	14.0	22.0		
10	0.616	550	630	1.15	9.0	14.0	21.5		
10	0.620	540	615	1.14	8.5	13.5	22.5		
10	0.619	535	610	1.14	8.5	13.5	22.5		
10	0.618	545	625	1.15	9.0	14.0	22.0		
10	0.617	560	645	1.15	10.0	15.0	21.0		
10	0.618	555	645	1.16	10.0	15.0	21.5		
10	0.613	550	635	1.15	9.5	14.5	21.5		
10	0.617	550	640	1.16	10.0	15.0	21.5		
10	0.615	560	645	1.15	10.0	15.0	21.0		
10	0.618	545	630	1.16	9.0	14.0	22.0		
10	0.617	545	630	1.16	9.0	14.0	22.0		
10	0.618	550	635	1.15	9.5	14.5	21.5		
10	0.619	540	620	1.15	8.5	13.5	22.5		
10	0.618	535	625	1.17	9.0	14.0	22.5		
10	0.617	550	640	1.16	10.0	15.0	21.5		
10	0.616	545	635	1.17	9.5	14.5	22.0		
10	0.615	545	635	1.17	9.5	14.5	22.0		
10	0.617	540	630	1.17	9.0	14.0	22.5		
10	0.618	540	630	1.17	9.0	14.0	22.5		
10	0.618	535	625	1.17	9.0	14.0	22.5		
10	0.619	530	620	1.17	8.5	13.5	23.0		
10	0.617	535	620	1.16	8.5	13.5	22.5		
10	0.618	550	635	1.15	9.5	14.5	21.5		
10	0.619	550	640	1.16	10.0	15.0	21.5		
10	0.618	545	625	1.15	9.0	14.0	22.0		
10	0.619	545	625	1.15	9.0	14.0	22.0		
10	0.618	555	640	1.15	10.0	15.0	21.5		
10	0.617	540	630	1.17	9.0	14.0	22.5		
10	0.616	535	620	1.16	8.5	13.5	22.5		
10	0.617	535	615	1.15	8.5	13.5	22.5		
10	0.618	545	635	1.17	9.5	14.5	22.0		
10	0.619	545	630	1.16	9.0	14.0	22.0		
10	0.618	540	630	1.17	9.0	14.0	22.5		
10	0.616	535	625	1.17	9.0	14.0	22.5		
10	0.618	535	620	1.16	8.5	13.5	22.5		
10	0.619	545	625	1.15	9.0	14.0	22.0		
10	0.618	540	620	1.15	8.5	13.5	22.5		
10	0.617	535	615	1.15	8.5	13.5	22.5		
10	0.618	545	635	1.17	9.5	14.5	22.0		

10	0.619	555	645	1.16	10.0	15.0	21.5
10	0.618	545	635	1.17	9.5	14.5	22.0
10	0.617	535	620	1.16	8.5	13.5	22.5
10	0.618	535	615	1.15	8.5	13.5	22.5
10	0.619	545	635	1.17	9.5	14.5	22.0
10	0.618	530	615	1.16	8.5	13.5	23.0
10	0.616	545	625	1.15	9.0	14.0	22.0
10	0.618	545	630	1.16	9.0	14.0	22.0
10	0.617	540	620	1.15	8.5	13.5	22.5
10	0.619	545	630	1.16	9.0	14.0	22.0
10	0.618	540	620	1.15	8.5	13.5	22.5
10	0.619	540	625	1.16	9.0	14.0	22.5
10	0.618	535	620	1.16	8.5	13.5	22.5
10	0.617	550	635	1.15	9.5	14.5	21.5
10	0.616	535	610	1.14	8.5	13.5	22.5
10	0.615	540	630	1.17	9.0	14.0	22.5
10	0.618	545	640	1.17	10.0	15.0	22.0
10	0.615	550	645	1.17	10.0	15.0	21.5
10	0.620	535	630	1.18	9.0	14.0	22.5
10	0.621	535	620	1.16	8.5	13.5	22.5
10	0.613	530	615	1.16	8.5	13.5	23.0
10	0.615	530	620	1.17	8.5	13.5	23.0
10	0.621	530	615	1.16	8.5	13.5	23.0
10	0.622	545	625	1.15	9.0	14.0	22.0
10	0.615	540	625	1.16	9.0	14.0	22.5
10	0.618	540	620	1.15	8.5	13.5	22.5
10	0.618	535	620	1.16	8.5	13.5	22.5
10	0.620	545	635	1.17	9.5	14.5	22.0
10	0.617	540	630	1.17	9.0	14.0	22.5
10	0.616	540	630	1.17	9.0	14.0	22.5
10	0.621	545	635	1.17	9.5	14.5	22.0
10	0.613	555	640	1.15	10.0	15.0	21.5
10	0.618	550	640	1.16	10.0	15.0	21.5
10	0.617	545	630	1.16	9.0	14.0	22.0
10	0.619	540	630	1.17	9.0	14.0	22.5
10	0.618	535	620	1.16	8.5	13.5	22.5
10	0.618	540	625	1.16	9.0	14.0	22.5
10	0.617	550	630	1.15	9.0	14.0	21.5
10	0.619	545	630	1.16	9.0	14.0	22.0
10	0.618	550	635	1.15	9.5	14.5	21.5
10	0.616	530	615	1.16	8.5	13.5	23.0
10	0.615	540	615	1.14	8.5	13.5	22.0
10	0.618	530	610	1.15	8.5	13.5	22.5
10	0.619	535	610	1.14	8.5	13.5	22.5
10	0.617	535	625	1.17	9.0	14.0	22.5
10	0.618	535	620	1.16	8.5	13.5	22.5
10	0.619	530	610	1.15	8.5	13.5	23.0
10	0.620	535	630	1.18	9.0	14.0	22.5
10	0.618	555	640	1.15	10.0	15.0	21.5
10	0.618	545	630	1.16	9.0	14.0	22.0
10	0.619	545	635	1.17	9.5	14.5	22.0
10	0.618	550	645	1.17	10.0	15.0	21.5
10	0.613	540	630	1.17	9.0	14.0	22.5
10	0.614	545	635	1.17	9.5	14.5	22.0
10	0.618	550	645	1.17	10.0	15.0	21.5
10	0.617	555	645	1.16	10.0	15.0	21.5
10	0.618	545	630	1.16	9.0	14.0	22.0
10	0.619	545	630	1.16	9.0	14.0	22.0
10	0.617	550	635	1.15	9.5	14.5	21.5
10	0.618	555	645	1.16	10.0	15.0	21.5
10	0.620	545	635	1.17	9.5	14.5	22.0
10	0.618	540	630	1.17	9.0	14.0	22.5
10	0.619	540	630	1.17	9.0	14.0	22.5
10	0.617	535	620	1.16	8.5	13.5	22.5
10	0.618	545	635	1.17	9.5	14.5	22.0
10	0.617	545	630	1.16	9.0	14.0	22.0
10	0.619	545	630	1.16	9.0	14.0	22.0
10	0.618	540	625	1.16	9.0	14.0	22.5
10	0.617	540	625	1.16	9.0	14.0	22.5
10	0.615	540	630	1.17	9.0	14.0	22.5
10	0.618	545	625	1.15	9.0	14.0	22.0
10	0.617	540	620	1.15	8.5	13.5	22.5
10	0.619	545	630	1.16	9.0	14.0	22.0
10	0.618	550	640	1.16	10.0	15.0	21.5
10	0.616	540	630	1.17	9.0	14.0	22.5
10	0.617	545	635	1.17	9.5	14.5	22.0

1.04

0.65

1.01

0.65

0.96

0.69

10	0.618	540	630	1.17	9.0	14.0	22.5	0.9	0.7
10	0.618	545	635	1.17	9.5	14.5	22.0		
10	0.617	545	630	1.16	9.0	14.0	22.0		
10	0.619	545	625	1.15	9.0	14.0	22.0		
10	0.618	550	635	1.15	9.5	14.5	21.5		
10	0.619	550	640	1.16	10.0	15.0	21.5		
10	0.620	555	645	1.16	10.0	15.0	21.5		
10	0.617	550	640	1.16	10.0	15.0	21.5		
10	0.616	545	630	1.16	9.0	14.0	22.0		
10	0.611	540	635	1.18	8.0	13.0	22.0		
10	0.611	540	640	1.19	9.5	14.0	20.0		
10	0.610	545	640	1.17	8.0	15.0	22.0		
10	0.617	545	640	1.17	9.5	14.0	20.0		
10	0.610	530	610	1.15	8.0	13.5	22.0		
10	0.612	525	625	1.19	9.5	14.0	20.0		
10	0.611	545	630	1.16	8.0	14.0	20.0		
10	0.615	530	615	1.16	9.5	13.5	20.0		
10	0.619	560	625	1.12	8.0	14.0	20.5		
10	0.618	565	630	1.12	7.5	14.0	21.0		
10	0.618	545	630	1.16	8.0	15.0	22.0		
10	0.617	545	625	1.15	9.5	14.0	21.0		
10	0.612	540	630	1.17	9.0	13.5	22.0		
10	0.611	535	600	1.12	8.0	14.0	21.0		
10	0.613	550	615	1.12	9.5	13.5	22.0		
10	0.612	560	625	1.12	8.0	14.0	22.0		
10	0.613	560	655	1.17	9.5	14.0	22.0		
10	0.610	550	640	1.16	8.0	15.0	20.5		
10	0.611	555	650	1.17	8.5	14.5	22.5		
10	0.614	535	630	1.18	8.0	14.0	20.0		
10	0.613	555	625	1.13	9.5	13.5	22.5		
10	0.618	555	635	1.14	8.0	14.0	22.0		
10	0.613	560	635	1.13	8.0	13.5	22.0		
10	0.615	560	650	1.16	9.0	13.0	21.0		
10	0.614	555	645	1.16	9.0	14.0	22.5		
10	0.614	560	645	1.15	8.0	15.0	22.5		
10	0.611	555	650	1.17	8.0	14.0	22.0		
10	0.613	550	630	1.15	9.0	15.0	21.0		
10	0.615	540	620	1.15	7.5	14.0	22.0		
10	0.613	555	620	1.12	8.0	13.0	20.0		
10	0.614	550	625	1.14	9.5	14.0	21.0		
10	0.612	555	620	1.12	8.0	13.5	21.0		
10	0.613	560	630	1.13	9.0	13.0	22.0		
10	0.611	555	625	1.13	8.0	14.0	20.0		
10	0.613	555	630	1.14	9.0	13.5	22.0		
10	0.614	525	615	1.17	9.0	13.5	21.0		
10	0.612	525	610	1.16	8.0	15.0	22.0		
10	0.611	540	620	1.15	9.0	15.0	21.0		
10	0.613	535	615	1.15	8.0	14.0	20.0		
10	0.614	540	620	1.15	8.5	13.5	19.5		
10	0.610	540	615	1.14	8.0	14.0	22.0		
10	0.612	530	615	1.16	8.0	15.0	22.0		
10	0.615	540	630	1.17	7.5	14.0	20.0		
10	0.613	545	615	1.13	9.0	15.0	21.0		
10	0.614	555	620	1.12	8.0	14.0	19.5		
10	0.612	540	625	1.16	9.5	13.5	20.0		
10	0.613	550	625	1.14	8.0	14.0	20.0		
10	0.619	545	620	1.14	9.5	13.5	20.0		
10	0.620	550	620	1.13	8.0	14.0	20.5		
10	0.615	545	620	1.14	9.0	14.0	21.0		
10	0.618	550	625	1.14	9.5	15.0	20.0		
10	0.620	550	615	1.12	8.5	13.5	21.5		
10	0.613	550	625	1.14	8.0	14.0	20.0		
10	0.615	550	620	1.13	8.5	14.0	20.5		
10	0.616	545	630	1.16	9.5	15.0	21.0		
10	0.614	545	630	1.16	8.0	14.0	22.0		
10	0.613	535	620	1.16	9.0	13.5	22.5		
10	0.614	550	620	1.13	8.5	14.0	21.5		
10	0.615	555	625	1.13	8.0	13.0	21.0		
10	0.616	550	620	1.13	9.0	15.0	22.0		
10	0.613	545	610	1.12	9.0	14.0	21.5		
10	0.620	545	610	1.12	8.0	13.5	22.0		
10	0.619	540	615	1.14	7.5	14.0	22.5		
10	0.616	535	605	1.13	8.0	15.0	22.0		
10	0.619	545	615	1.13	9.0	14.0	21.5		
10	0.612	545	610	1.12	9.5	13.5	22.5		
10	0.614	535	615	1.15	8.5	14.0	22.0		

0.9

0.7

1.03

0.69

10	0.613	540	620	1.15	8.0	13.5	21.0		
10	0.615	560	635	1.13	9.0	15.0	22.0		
10	0.619	540	615	1.14	10.0	15.5	22.0		
10	0.618	540	620	1.15	8.0	14.0	21.0		
10	0.618	540	620	1.15	9.5	16.0	23.0		
10	0.616	535	610	1.14	8.0	15.5	22.0		
10	0.619	535	610	1.14	9.5	14.0	22.0		
10	0.620	555	630	1.14	8.5	15.0	21.0		
10	0.619	535	610	1.14	9.0	14.0	22.0		
10	0.616	550	620	1.13	8.0	15.5	23.0		
10	0.620	540	620	1.15	9.0	14.5	20.0		
10	0.619	545	615	1.13	8.5	14.0	22.0		
10	0.618	555	635	1.14	10.0	15.0	23.0		
10	0.615	530	615	1.16	8.0	15.0	22.0		
10	0.618	560	630	1.13	9.5	14.0	21.0		
10	0.618	565	640	1.13	8.0	16.0	20.0		
10	0.619	565	640	1.13	9.5	15.0	22.0		
10	0.620	565	645	1.14	10.0	14.0	20.0		
10	0.614	540	625	1.16	8.0	14.5	22.0		
10	0.619	550	620	1.13	9.5	14.0	22.0		
10	0.613	550	625	1.14	8.0	15.0	21.0		
10	0.613	565	630	1.12	8.5	13.5	21.0		
10	0.618	540	615	1.14	9.5	15.0	22.0	0.92	0.55
10	0.615	540	615	1.14	9.0	14.5	21.5		
10	0.614	535	625	1.17	10.0	16.0	22.5		
10	0.618	560	635	1.13	8.5	13.5	20.5		
10	0.619	535	610	1.14	8.0	14.0	21.0		
10	0.617	540	615	1.14	10.0	16.5	23.0		
10	0.618	550	630	1.15	9.0	14.0	21.5		
10	0.615	565	635	1.12	8.5	13.0	20.0		
10	0.616	545	615	1.13	8.5	13.5	21.0		
10	0.613	550	630	1.15	9.0	14.5	21.5		
10	0.614	545	625	1.15	9.5	15.0	22.0		
10	0.618	550	635	1.15	10.0	15.5	22.5		
10	0.620	535	610	1.14	8.5	14.0	21.0		
10	0.619	540	620	1.15	9.0	14.5	21.5		
10	0.620	560	640	1.14	8.0	13.5	20.5		
10	0.621	550	630	1.15	8.5	13.0	20.0		
10	0.623	550	625	1.14	8.5	14.0	21.0		
10	0.613	560	645	1.15	8.0	13.5	20.5		
10	0.618	560	640	1.14	9.0	14.0	21.0		
10	0.618	560	635	1.13	8.5	13.5	21.0		
10	0.620	555	625	1.13	8.0	13.0	20.5		
10	0.612	555	635	1.14	9.0	14.5	21.5		
10	0.616	550	625	1.14	8.5	14.0	21.0		
10	0.614	540	615	1.14	9.0	14.5	21.5		
10	0.617	550	630	1.15	8.0	13.0	20.0		
10	0.614	535	605	1.13	9.5	15.0	22.0		
10	0.617	540	620	1.15	8.5	14.0	21.0		
10	0.614	555	630	1.14	8.5	13.5	20.5		
10	0.621	530	595	1.12	9.0	14.0	21.0		
10	0.620	535	605	1.13	8.0	13.0	20.5		
10	0.618	545	620	1.14	9.0	14.5	21.5		
10	0.616	560	635	1.13	8.5	13.5	21.0		
10	0.616	565	640	1.13	8.0	13.0	20.5		
10	0.620	560	635	1.13	8.5	13.5	20.5		
10	0.618	550	630	1.15	9.5	14.5	22.0		
10	0.617	560	630	1.13	9.0	14.0	21.5		
10	0.618	560	640	1.14	8.5	13.5	21.0	0.95	0.65
10	0.622	555	635	1.14	9.5	15.5	22.0		
10	0.620	565	645	1.14	8.5	13.5	20.5		
10	0.618	565	640	1.13	8.0	13.0	20.0		
10	0.619	555	635	1.14	9.0	14.5	21.5		
10	0.616	550	630	1.15	9.5	15.0	22.0		
10	0.620	565	650	1.15	8.5	13.0	20.5		
10	0.618	565	645	1.14	8.5	13.5	21.0		
10	0.619	560	640	1.14	9.0	14.0	21.5		
10	0.618	555	630	1.14	9.5	15.0	22.0		
10	0.622	555	625	1.13	10.0	15.5	22.5		
10	0.619	560	635	1.13	8.5	13.5	21.0		
10	0.619	540	615	1.14	9.5	15.0	22.0		
10	0.620	540	620	1.15	8.5	13.5	21.0		
10	0.623	540	620	1.15	10.0	16.0	23.0		
10	0.620	535	610	1.14	9.0	14.5	21.5		
10	0.619	535	610	1.14	9.5	15.0	22.0		
10	0.622	555	630	1.14	8.5	14.0	21.0		

10	0.619	535	610	1.14	9.0	14.5	22.0	0.94	0.75
10	0.623	545	620	1.14	10.0	16.0	23.0		
10	0.625	540	620	1.15	8.0	13.0	20.0		
10	0.619	545	615	1.13	9.5	14.5	22.0		
10	0.619	555	635	1.14	10.0	16.5	23.0		
10	0.618	555	625	1.13	9.0	14.5	21.5		
10	0.617	550	635	1.15	8.5	13.5	21.0		
10	0.620	560	645	1.15	8.0	13.0	20.5		
10	0.619	550	640	1.16	8.5	14.0	21.0		
10	0.621	560	630	1.13	9.0	13.5	21.0		
10	0.623	545	625	1.15	8.5	14.0	21.0		
10	0.620	555	640	1.15	8.0	13.0	20.5		
10	0.621	550	620	1.13	9.0	13.5	21.0		
10	0.624	560	625	1.12	9.5	14.5	22.0		
10	0.618	555	635	1.14	8.0	13.5	20.5		
10	0.619	530	630	1.19	10.0	16.0	22.5		
10	0.615	540	635	1.18	9.5	14.5	22.0		
10	0.616	555	635	1.14	10.0	15.5	22.5		
10	0.619	535	615	1.15	9.5	15.0	22.0		
10	0.620	535	615	1.15	10.0	16.0	22.5		
10	0.621	545	620	1.14	9.0	14.5	21.5		
10	0.623	545	620	1.14	9.5	15.0	22.0		
10	0.622	535	610	1.14	10.0	16.0	22.5		
10	0.618	535	610	1.14	8.5	14.5	22.0		
10	0.617	535	605	1.13	9.5	15.5	22.5		
10	0.615	530	610	1.15	9.0	14.0	21.5		
10	0.616	545	620	1.14	8.5	13.5	20.5		
10	0.619	550	630	1.15	8.5	14.0	21.0		
10	0.620	535	610	1.14	9.5	14.5	22.0		
10	0.621	540	615	1.14	9.5	15.0	22.0		
10	0.620	545	620	1.14	8.5	13.5	21.0		
10	0.615	545	620	1.14	10.0	16.0	22.5		
10	0.615	535	610	1.14	10.0	16.5	23.0		
10	0.615	535	605	1.13	8.0	13.5	20.5		
10	0.617	535	615	1.15	9.0	14.5	21.5		
10	0.619	545	625	1.15	8.5	14.0	21.0		
10	0.615	540	620	1.15	8.5	13.5	21.0		
10	0.614	555	630	1.14	8.5	13.5	20.5		
10	0.615	555	635	1.14	8.0	13.0	20.0		
10	0.617	540	630	1.17	9.5	15.0	22.0		
10	0.618	555	645	1.16	9.0	14.5	21.0		
10	0.619	555	640	1.15	8.5	14.0	21.0		
10	0.615	540	615	1.14	9.0	14.5	21.5		
10	0.613	555	635	1.14	8.5	13.5	21.0		
10	0.612	550	640	1.16	8.0	13.0	20.0		
10	0.615	560	650	1.16	8.5	13.0	20.0		
10	0.614	550	645	1.17	8.0	13.5	20.5		
10	0.616	535	610	1.14	9.0	14.0	21.0		
10	0.613	540	620	1.15	9.5	15.0	22.0		
10	0.621	540	615	1.14	9.0	15.5	22.0		
10	0.623	540	615	1.14	8.5	13.5	21.0		
10	0.618	540	620	1.15	9.0	14.5	21.5		
10	0.617	555	640	1.15	9.5	15.0	22.0		
10	0.619	555	635	1.14	9.0	14.5	21.5		
10	0.621	550	625	1.14	8.5	13.5	20.5		
10	0.615	550	620	1.13	8.0	13.0	20.0		
10	0.616	560	645	1.15	8.5	14.0	20.5		
10	0.619	530	610	1.15	9.0	14.5	21.5		
10	0.620	555	630	1.14	8.5	13.5	21.0		
10	0.621	545	625	1.15	9.5	14.5	22.0		
10	0.623	550	630	1.15	8.5	13.5	21.0		
10	0.620	540	620	1.15	9.5	15.0	22.0		
10	0.622	525	610	1.16	9.0	13.5	21.0		
10	0.615	540	625	1.16	9.5	15.5	22.0		
10	0.617	550	630	1.15	9.0	14.0	21.0		
10	0.619	525	615	1.17	10.0	16.0	22.5		
10	0.618	545	625	1.15	8.5	13.5	21.0		
10	0.620	540	625	1.16	9.0	14.5	21.5		
10	0.618	545	625	1.15	8.5	14.0	21.0		
10	0.619	560	635	1.13	8.5	14.0	21.0		
10	0.620	555	640	1.15	9.0	14.5	21.5		
10	0.618	560	640	1.14	8.5	13.5	20.5		
10	0.621	555	645	1.16	9.0	14.0	21.0		
10	0.619	550	640	1.16	9.5	15.0	22.0		
10	0.622	555	645	1.16	8.5	13.5	21.0		
10	0.618	560	645	1.15	8.0	13.0	20.5		

10	0.616	545	645	1.18	10.0	15.5	22.5	0.90	0.55
10	0.623	545	650	1.19	10.0	16.0	23.0		
10	0.624	560	655	1.17	8.5	13.5	21.0		
10	0.621	535	630	1.18	10.0	15.5	22.5		
10	0.619	540	635	1.18	10.0	16.0	23.0		
10	0.615	550	630	1.15	9.0	14.5	21.5		
10	0.617	535	610	1.14	8.5	13.5	22.5		
10	0.618	540	615	1.14	8.5	14.0	22.5		
10	0.619	535	615	1.15	8.5	13.5	22.5		
10	0.618	535	610	1.14	8.5	13.5	22.5		
10	0.618	550	635	1.15	9.5	15.0	21.5		
10	0.617	540	615	1.14	8.5	14.0	22.5		
10	0.616	540	615	1.14	8.5	14.0	22.5		
10	0.615	540	615	1.14	8.5	14.0	22.5		
10	0.614	550	640	1.16	10.0	15.5	21.5		
10	0.615	535	610	1.14	8.5	14.0	22.5		
10	0.618	540	620	1.15	8.5	14.0	22.5		
10	0.619	550	630	1.15	9.0	14.5	21.5		
10	0.619	540	615	1.14	8.5	14.0	22.5		
10	0.618	535	610	1.14	8.0	13.5	22.5		
10	0.617	545	620	1.14	8.5	14.0	21.5		
10	0.618	550	645	1.17	10.0	15.5	21.5		
10	0.618	555	640	1.15	10.0	15.5	21.5		
10	0.615	550	640	1.16	10.0	15.5	21.5		
10	0.612	550	640	1.16	10.0	15.5	21.5		
10	0.613	555	635	1.14	9.5	15.0	21.5		
10	0.618	545	630	1.16	9.0	14.5	22.0		
10	0.618	545	630	1.16	9.0	14.5	22.0		
10	0.617	550	635	1.15	9.5	15.0	21.5		
10	0.618	540	630	1.17	9.0	14.5	22.5		
10	0.619	535	620	1.16	8.5	14.0	22.5		
10	0.617	550	640	1.16	10.0	15.5	21.5		
10	0.618	545	635	1.17	9.5	15.0	21.5		
10	0.618	545	635	1.17	9.5	15.0	22.0		
10	0.618	540	630	1.17	9.0	14.5	22.5		
10	0.618	540	630	1.17	9.0	14.5	22.5		
10	0.617	535	625	1.17	9.0	14.5	22.5		
10	0.618	535	620	1.16	8.5	14.0	22.5		
10	0.612	535	620	1.16	8.5	14.0	22.5		
10	0.614	550	635	1.15	9.5	15.0	21.5		
10	0.613	550	640	1.16	10.0	15.5	21.5		
10	0.615	545	625	1.15	9.0	14.5	22.0		
10	0.616	545	625	1.15	9.0	14.5	22.0		
10	0.612	550	640	1.16	10.0	15.5	21.5		
10	0.614	540	630	1.17	9.0	14.5	22.5		
10	0.615	535	620	1.16	8.5	14.0	22.5		
10	0.615	535	615	1.15	8.5	14.0	22.5		
10	0.615	545	630	1.16	9.0	14.5	22.0		
10	0.614	545	630	1.16	9.0	14.5	22.0		
10	0.618	540	630	1.17	9.0	14.5	22.5		
10	0.617	535	620	1.16	8.5	14.0	22.5		
10	0.616	535	620	1.16	8.5	14.0	22.5		
10	0.613	545	625	1.15	9.0	14.5	22.0		
10	0.615	540	620	1.15	8.5	14.0	22.5		
10	0.617	535	615	1.15	8.5	14.0	22.5		
10	0.618	545	635	1.17	9.5	15.0	22.0		
10	0.618	550	645	1.17	10.0	15.5	21.5		
10	0.619	545	635	1.17	9.5	15.0	22.0		
10	0.618	535	620	1.16	8.5	14.0	22.5		
10	0.617	535	615	1.15	8.5	14.0	22.5		
10	0.620	545	635	1.17	9.5	14.5	22.0		
10	0.620	535	610	1.14	8.5	14.0	22.5		
10	0.621	545	625	1.15	9.0	14.5	22.0		
10	0.615	545	630	1.16	9.0	14.5	22.0		
10	0.613	540	620	1.15	8.5	14.0	22.5		
10	0.620	545	630	1.16	9.0	14.5	22.0		
10	0.622	540	620	1.15	8.5	14.0	22.5		
10	0.611	540	625	1.16	9.0	14.5	22.5		
10	0.612	535	620	1.16	8.5	14.0	22.5		
10	0.617	550	635	1.15	9.5	15.0	21.5		
10	0.619	535	610	1.14	8.5	14.0	22.5		
10	0.612	540	630	1.17	9.0	14.5	22.5		
10	0.615	545	635	1.17	9.5	15.0	22.0		
10	0.616	550	645	1.17	10.0	15.5	21.5		
10	0.618	535	620	1.16	8.5	14.0	22.5		
10	0.611	535	620	1.16	8.5	14.0	22.5		

0.90

0.55

0.95

0.41

10	0.612	535	615	1.15	8.5	14.0	22.5
10	0.617	535	620	1.16	8.5	14.0	22.5
10	0.618	535	615	1.15	8.5	14.0	22.5
10	0.619	545	625	1.15	9.0	14.5	22.0
10	0.620	540	625	1.16	9.0	14.5	22.5
10	0.615	540	620	1.15	8.5	14.0	22.5
10	0.614	535	620	1.16	8.5	14.0	22.5
10	0.618	540	620	1.15	8.5	14.0	22.5
10	0.613	540	625	1.16	9.0	14.5	22.5
10	0.612	540	625	1.16	9.0	14.5	22.5
10	0.618	535	625	1.17	9.0	14.5	22.5
10	0.617	550	635	1.15	9.5	15.0	21.5
10	0.615	535	615	1.15	8.5	14.0	22.5
10	0.618	540	620	1.15	8.5	14.0	22.5
10	0.619	545	620	1.14	8.5	14.0	22.0
10	0.618	555	645	1.16	10.0	15.5	21.5
10	0.617	540	630	1.17	9.0	14.5	22.5
10	0.620	540	635	1.18	9.5	15.0	22.5
10	0.622	545	645	1.18	10.0	15.5	22.0
10	0.615	540	630	1.17	9.0	14.5	22.5
10	0.614	545	630	1.16	9.0	14.5	22.0
10	0.621	545	640	1.17	10.0	15.5	22.0
10	0.622	545	630	1.16	9.0	14.5	22.0
10	0.615	535	620	1.16	8.5	13.5	22.5
10	0.614	535	610	1.14	8.5	14.0	22.5
10	0.618	535	620	1.16	8.5	14.0	22.5
10	0.620	535	615	1.15	8.5	14.0	22.5
10	0.613	535	615	1.15	8.5	13.5	22.5
10	0.614	535	610	1.14	8.5	13.5	22.5
10	0.619	535	615	1.15	8.5	13.5	22.5
10	0.617	540	620	1.15	8.5	14.0	22.5
10	0.612	540	615	1.14	8.5	14.0	22.5
10	0.614	535	610	1.14	8.5	14.0	22.5
10	0.619	555	650	1.17	10.0	15.5	21.5
10	0.621	535	620	1.16	8.5	14.0	22.5
10	0.613	540	625	1.16	9.0	14.5	22.5
10	0.611	550	635	1.15	9.5	15.0	21.5
10	0.618	550	640	1.16	10.0	15.5	21.5
10	0.613	540	625	1.16	9.0	14.5	22.5
10	0.617	540	625	1.16	9.0	14.5	22.5
10	0.615	545	635	1.17	9.5	15.0	22.0
10	0.619	545	625	1.15	9.0	14.5	22.0
10	0.618	540	615	1.14	8.5	14.0	22.5
10	0.619	535	610	1.14	8.5	14.0	22.5
10	0.614	535	610	1.14	8.5	14.0	22.5
10	0.613	550	640	1.16	10.0	15.5	21.5
10	0.620	535	610	1.14	8.5	14.0	22.5
10	0.618	535	615	1.15	8.5	14.0	22.5
10	0.614	540	620	1.15	8.5	14.0	22.5
10	0.619	545	635	1.17	9.5	15.0	22.0
10	0.623	535	615	1.15	8.5	14.0	22.5
10	0.612	535	620	1.16	8.5	14.0	22.5
10	0.613	535	625	1.17	9.0	14.5	22.5
10	0.618	545	625	1.15	9.0	14.5	22.5
10	0.620	550	635	1.15	9.5	15.0	21.5
10	0.613	545	625	1.15	9.0	14.5	22.0
10	0.614	540	620	1.15	8.5	14.0	22.5
10	0.621	535	610	1.14	8.5	14.0	22.5
10	0.622	540	615	1.14	8.5	14.0	22.5
10	0.618	535	610	1.14	8.5	14.0	22.5
10	0.619	540	620	1.15	8.5	14.0	22.5
10	0.620	535	610	1.14	8.5	14.0	22.5
10	0.622	540	625	1.16	9.0	14.5	22.5
10	0.612	540	620	1.15	8.5	14.0	22.5
10	0.614	545	625	1.15	9.0	14.5	22.0
10	0.623	540	620	1.15	8.5	14.0	22.5
10	0.622	550	635	1.15	9.5	15.0	21.5
10	0.615	545	630	1.16	9.0	14.5	22.0
10	0.614	545	630	1.16	9.0	14.5	22.0
10	0.616	545	630	1.16	9.0	14.0	22.0
10	0.618	550	635	1.15	9.5	14.5	21.5
10	0.614	545	635	1.17	9.5	14.5	22.0
10	0.616	540	630	1.17	9.0	14.0	22.5
10	0.619	540	625	1.16	9.0	14.0	22.5
10	0.621	545	635	1.17	9.5	14.5	22.0
10	0.615	540	625	1.16	9.0	14.0	22.5

0.93

0.65

0.88

0.65

10	0.617	550	640	1.16	10.0	15.0	21.5	0.85	0.65
10	0.622	545	630	1.16	9.0	14.0	22.0		
10	0.622	550	640	1.16	10.0	15.0	21.5		
10	0.616	555	645	1.16	10.0	15.0	21.0		
10	0.619	545	635	1.17	9.5	14.5	22.0		
10	0.621	545	630	1.16	9.0	14.0	22.0		
10	0.623	540	625	1.16	9.0	14.0	22.5		
10	0.615	540	630	1.17	9.0	14.0	22.5		
10	0.618	545	635	1.17	9.5	14.5	22.0		
10	0.622	550	640	1.16	10.0	15.0	21.5		
10	0.622	555	645	1.16	10.0	15.0	21.0		
10	0.618	545	630	1.16	9.0	14.5	22.0		
10	0.617	550	640	1.16	10.0	15.0	21.5		
10	0.617	555	655	1.18	8.5	13.5	21.0		
10	0.616	560	650	1.16	8.0	14.0	22.0		
10	0.612	540	635	1.18	7.5	14.0	21.0		
10	0.614	545	640	1.17	9.0	14.5	23.0		
10	0.619	555	650	1.17	8.5	13.0	23.0		
10	0.618	550	650	1.18	7.5	14.0	21.0		
10	0.615	560	665	1.19	8.0	13.5	21.0		
10	0.617	530	630	1.19	9.5	14.0	21.5		
10	0.620	545	645	1.18	8.0	13.5	22.0		
10	0.617	540	630	1.17	8.5	14.0	22.0		
10	0.617	540	645	1.19	9.0	14.0	21.0		
10	0.621	550	635	1.15	8.0	15.0	22.0		
10	0.622	540	640	1.19	7.5	14.0	20.0		
10	0.620	540	640	1.19	8.0	13.5	21.0		
10	0.618	555	625	1.13	9.5	14.0	21.0		
10	0.621	530	625	1.18	8.0	13.5	23.0		
10	0.618	540	625	1.16	9.5	14.0	21.0		
10	0.619	535	635	1.19	7.5	13.5	21.0		
10	0.620	560	625	1.12	8.0	14.0	21.5		
10	0.616	535	635	1.19	9.5	14.0	23.0		
10	0.611	545	645	1.18	8.0	13.5	22.0		
10	0.620	545	635	1.17	9.5	14.0	22.0		
10	0.613	545	625	1.15	8.0	14.0	22.0		
10	0.613	535	625	1.17	9.5	13.5	22.5		
10	0.614	545	650	1.19	8.0	14.0	21.5		
10	0.620	555	635	1.14	9.0	13.5	21.0		
10	0.616	545	645	1.18	9.5	14.0	23.0		
10	0.619	550	630	1.15	8.0	13.5	21.0		
10	0.612	555	635	1.14	9.5	14.0	22.0		
10	0.613	535	625	1.17	8.0	13.5	21.0		
10	0.616	545	635	1.17	9.5	14.0	23.0		
10	0.619	530	625	1.18	8.0	13.5	20.0		
10	0.613	545	635	1.17	9.5	14.0	20.5		
10	0.615	545	650	1.19	8.0	13.5	21.0		
10	0.620	555	640	1.15	9.5	14.0	21.0		
10	0.621	545	650	1.19	8.0	13.5	21.5		
10	0.613	550	650	1.18	9.5	14.0	21.0		
10	0.615	560	660	1.18	8.0	13.5	20.0		
10	0.618	545	640	1.17	9.5	14.0	21.5		
10	0.619	540	640	1.19	7.5	14.0	20.0		
10	0.620	540	635	1.18	8.0	13.5	21.0		
10	0.622	540	635	1.18	9.5	14.0	20.5		
10	0.615	560	635	1.13	8.0	14.0	21.0		
10	0.619	555	650	1.17	9.5	13.5	20.0		
10	0.611	560	625	1.12	8.5	15.0	21.0		
10	0.613	555	620	1.12	9.5	14.0	21.5		
10	0.615	560	630	1.13	8.0	15.0	20.5		
10	0.614	550	615	1.12	9.5	14.0	21.0		
10	0.620	555	645	1.16	7.5	13.5	22.0		
10	0.613	560	645	1.15	8.0	14.0	21.0		
10	0.615	545	645	1.18	9.5	13.5	20.5		
10	0.619	545	650	1.19	8.0	14.0	22.5		
10	0.613	560	655	1.17	9.5	14.0	21.0		
10	0.619	535	630	1.18	7.5	13.5	21.0		
10	0.620	540	635	1.18	8.0	14.0	22.5		
10	0.613	540	630	1.17	9.0	13.5	23.0		
10	0.612	530	620	1.17	9.5	14.0	22.0		
10	0.615	540	630	1.17	7.5	14.0	21.0		
10	0.614	555	635	1.14	8.5	13.5	20.0		
10	0.616	545	625	1.15	9.5	14.0	20.0		
10	0.620	555	640	1.15	7.5	13.5	20.0		
10	0.615	560	645	1.15	8.5	14.0	20.0		
10	0.613	555	640	1.15	8.0	13.5	21.0		

10	0.618	530	615	1.16	9.5	14.0	19.5		
10	0.620	560	650	1.16	8.0	13.5	20.0		
10	0.617	560	620	1.11	8.5	14.0	20.0		
10	0.613	550	645	1.17	7.5	13.5	22.0		
10	0.619	550	640	1.16	8.5	14.0	21.0		
10	0.615	545	630	1.16	9.5	13.5	21.0		
10	0.614	545	625	1.15	7.5	14.0	21.0		
10	0.615	550	620	1.13	8.0	13.5	20.0		
10	0.620	540	625	1.16	9.5	14.0	19.5		
10	0.613	535	620	1.16	7.5	13.5	22.0		
10	0.618	550	625	1.14	8.0	14.0	19.0		
10	0.620	535	615	1.15	9.5	13.5	21.0		
10	0.613	525	610	1.16	7.5	14.0	21.0		
10	0.619	530	615	1.16	8.0	13.5	21.0		
10	0.620	535	625	1.17	9.0	14.0	22.0		
10	0.616	540	625	1.16	8.0	13.5	21.0		
10	0.615	540	645	1.19	9.0	14.0	21.0		
10	0.613	560	640	1.14	8.0	15.0	22.0		
10	0.620	545	635	1.17	8.5	14.0	20.0		
10	0.619	550	630	1.15	9.5	15.0	22.0		
10	0.620	540	625	1.16	8.0	14.0	21.0		
10	0.613	540	610	1.13	9.5	13.5	22.0		
10	0.616	530	625	1.18	8.0	14.5	22.5		
10	0.614	535	625	1.17	9.5	13.5	22.0		
10	0.618	530	615	1.16	8.0	14.0	21.5		
10	0.619	540	615	1.14	7.5	13.5	21.5		
10	0.620	530	610	1.15	9.0	14.0	22.5		
10	0.613	530	620	1.17	8.0	15.0	22.5		
10	0.620	535	615	1.15	9.5	14.0	22.5		
10	0.621	535	615	1.15	8.0	13.5	21.0		
10	0.615	530	625	1.18	9.5	14.0	21.0		
10	0.616	535	630	1.18	8.0	13.5	21.5		
10	0.620	560	625	1.12	9.5	14.0	22.0		
10	0.620	535	630	1.18	8.5	15.0	22.0		
10	0.613	560	630	1.13	9.0	14.0	20.0		
10	0.615	550	615	1.12	8.5	13.5	22.5		
10	0.618	530	605	1.14	9.5	14.0	20.5		
10	0.616	535	615	1.15	8.0	14.5	21.0		
10	0.620	530	610	1.15	9.0	15.0	23.0		
10	0.618	530	630	1.19	8.0	14.0	20.5		
10	0.619	555	630	1.14	9.5	13.5	22.5		
10	0.614	550	635	1.15	8.0	14.5	22.5		
10	0.613	550	630	1.15	9.5	14.0	21.0		
10	0.615	540	635	1.18	8.0	13.5	21.0		
10	0.617	545	640	1.17	9.0	13.5	22.0		
10	0.613	555	650	1.17	8.0	14.0	22.0		
10	0.618	555	650	1.17	9.0	15.0	22.0		
10	0.620	560	650	1.16	8.5	14.0	20.0		
10	0.613	560	655	1.17	8.0	13.5	20.0		
10	0.615	540	640	1.19	9.0	14.0	21.0		
10	0.620	540	635	1.18	8.5	15.5	21.0		
10	0.621	545	635	1.17	9.0	13.5	22.0		
10	0.616	555	620	1.12	8.5	14.0	21.0		
10	0.620	530	615	1.16	9.0	13.5	20.0		
10	0.614	525	605	1.15	8.5	14.0	22.0		
10	0.620	550	630	1.15	9.0	15.5	23.0		
10	0.613	545	620	1.14	8.5	14.0	21.0		
10	0.614	560	660	1.18	9.0	13.5	23.0		
10	0.615	550	645	1.17	8.0	14.0	22.0		
10	0.619	540	630	1.17	9.5	15.0	22.0		
10	0.620	525	620	1.18	8.0	14.0	20.5		
10	0.605	535	625	1.17	9.0	15.0	22.0		
10	0.615	515	620	1.20	8.5	15.5	22.0		
10	0.616	565	630	1.12	9.0	14.0	20.0		
10	0.615	525	625	1.19	8.5	15.0	20.0		
10	0.615	550	620	1.13	10.0	14.0	22.0		
10	0.614	555	625	1.13	8.0	15.5	21.0		
10	0.618	560	625	1.12	9.5	14.0	23.0		
10	0.615	565	630	1.12	8.0	13.5	20.0		
10	0.613	540	645	1.19	9.5	14.0	22.0		
10	0.616	535	630	1.18	10.0	15.5	22.0		
10	0.615	550	625	1.14	8.0	14.0	21.0		
10	0.614	550	630	1.15	9.5	14.5	21.5		
10	0.610	545	625	1.15	8.0	15.5	22.0		
10	0.619	560	630	1.13	9.0	13.5	20.0		
10	0.615	555	625	1.13	8.0	14.0	20.0		

1.00

0.58

0.93

0.60

10	0.616	550	635	1.15	9.5	15.0	21.0		
10	0.603	545	635	1.17	8.0	14.0	20.0		
10	0.605	540	645	1.19	9.5	13.5	21.0		
10	0.607	545	640	1.17	8.0	14.0	22.0		
10	0.610	550	645	1.17	9.0	15.5	20.5		
10	0.607	560	655	1.17	9.0	14.5	21.5		
10	0.608	545	635	1.17	9.5	15.0	22.0		
10	0.611	540	635	1.18	10.0	15.5	22.5		
10	0.610	545	635	1.17	10.5	16.5	23.0		
10	0.608	555	650	1.17	8.5	14.0	21.0		
10	0.609	545	635	1.17	10.0	16.5	23.0		
10	0.612	540	640	1.19	10.0	15.5	22.5		
10	0.609	540	640	1.19	9.5	15.0	22.0		
10	0.613	560	655	1.17	8.5	13.5	20.5		
10	0.614	555	640	1.15	8.5	14.0	21.0		
10	0.614	550	640	1.16	9.0	14.5	21.5		
10	0.613	550	640	1.16	9.0	15.0	21.5		
10	0.615	550	650	1.18	9.5	15.5	22.0		
10	0.616	545	655	1.20	9.0	15.0	22.0		
10	0.614	555	655	1.18	8.0	13.0	20.5		
10	0.613	560	660	1.18	8.0	13.5	20.5		
10	0.617	560	655	1.17	8.5	14.0	21.0		
10	0.619	535	615	1.15	9.0	14.5	21.5		
10	0.616	530	600	1.13	8.5	13.5	20.5		
10	0.615	540	635	1.18	10.0	15.5	22.5		
10	0.619	530	610	1.15	8.5	13.5	21.0		
10	0.617	560	645	1.15	9.0	14.0	21.5		
10	0.617	550	625	1.14	8.5	13.5	21.0		
10	0.614	545	620	1.14	10.0	16.0	22.5		
10	0.621	545	630	1.16	9.5	15.0	22.0		
10	0.620	555	645	1.16	9.0	14.5	21.5		
10	0.619	545	640	1.17	10.0	16.5	23.0		
10	0.617	535	615	1.15	9.0	14.5	21.5		
10	0.612	540	615	1.14	9.5	15.0	22.0		
10	0.609	535	620	1.16	8.5	13.5	21.0		
10	0.610	560	655	1.17	8.5	13.0	21.0		
10	0.610	545	635	1.17	10.0	16.5	23.0		
10	0.614	535	625	1.17	9.5	15.0	22.0		
10	0.616	535	630	1.18	9.0	14.5	21.5		
10	0.613	530	610	1.15	8.5	13.5	21.0		
10	0.612	555	650	1.17	9.0	14.0	21.5		
10	0.617	555	655	1.18	9.0	14.5	21.5		
10	0.615	560	660	1.18	9.5	15.0	22.0		
10	0.613	540	635	1.18	8.5	13.5	21.0		
10	0.615	545	640	1.17	10.0	16.5	23.0		
10	0.615	550	650	1.18	9.5	15.0	22.0		
10	0.614	550	650	1.18	8.5	13.5	21.0		
10	0.612	560	665	1.19	8.5	14.0	21.0		
10	0.613	530	625	1.18	8.0	13.5	21.0		
10	0.618	540	645	1.19	10.0	15.5	22.5		
10	0.616	540	630	1.17	9.5	15.0	22.0		
10	0.614	550	655	1.19	8.5	13.5	21.0		
10	0.613	540	635	1.18	9.0	14.5	22.0		
10	0.618	540	640	1.19	8.0	13.0	20.0		
10	0.616	555	660	1.19	8.5	13.5	21.0		
10	0.615	530	625	1.18	8.5	13.5	21.0		
10	0.613	540	625	1.16	10.5	16.0	23.0		
10	0.619	535	625	1.17	8.5	14.0	21.0		
10	0.620	560	665	1.19	8.5	13.5	21.0		
10	0.617	535	625	1.17	8.0	13.5	21.0		
10	0.616	545	640	1.17	10.5	16.5	23.0		
10	0.616	545	645	1.18	10.0	15.5	22.5		
10	0.618	545	635	1.17	9.5	15.0	22.0		
10	0.615	535	625	1.17	9.0	14.5	22.0		
10	0.616	545	625	1.15	9.5	15.0	22.0		
10	0.617	555	650	1.17	9.0	14.5	21.5		
10	0.620	545	635	1.17	8.5	13.5	21.0		
10	0.618	550	645	1.17	10.5	16.0	23.0		
10	0.616	555	655	1.18	8.5	13.0	21.0		
10	0.617	535	630	1.18	9.0	15.0	22.0		
10	0.619	545	635	1.17	8.5	13.5	21.0		
10	0.615	530	625	1.18	10.0	16.0	23.0		
10	0.614	540	635	1.18	8.0	13.0	20.0		
10	0.620	530	625	1.18	8.5	13.5	21.0		
10	0.618	545	635	1.17	8.5	14.0	21.0		
10	0.615	555	650	1.17	8.0	13.5	21.0		

10	0.614	545	640	1.17	8.5	14.0	21.0	0.62	0.95
10	0.621	550	650	1.18	9.5	15.0	22.0		
10	0.623	560	665	1.19	8.0	13.0	20.0		
10	0.618	545	640	1.17	8.5	13.5	21.0		
10	0.617	540	645	1.19	8.0	13.0	20.0		
10	0.616	540	645	1.19	10.0	15.5	22.5		
10	0.619	565	680	1.20	8.5	13.0	20.0		
10	0.615	555	650	1.17	9.0	14.0	21.0		
10	0.614	550	645	1.17	9.5	14.5	21.5		
10	0.618	560	670	1.20	8.5	13.5	21.0		
10	0.616	555	650	1.17	9.0	15.0	21.5		
10	0.615	560	650	1.16	8.5	13.0	20.5		
10	0.613	555	640	1.15	9.0	14.0	21.0		
10	0.620	550	640	1.16	9.5	15.0	22.0		
10	0.621	555	645	1.16	8.5	13.5	21.0		
10	0.618	560	645	1.15	8.0	13.5	20.5		
10	0.616	545	645	1.18	10.0	15.5	22.5		
10	0.615	545	650	1.19	10.5	16.0	23.0		
10	0.613	560	655	1.17	8.5	13.5	21.0		
10	0.612	535	630	1.18	10.0	15.5	22.5		
10	0.611	540	635	1.18	10.5	16.5	23.0		
10	0.617	565	645	1.14	8.5	14.0	21.0		
10	0.618	555	645	1.16	9.5	15.0	22.0		
10	0.615	545	630	1.16	9.0	14.5	21.5		
10	0.613	540	630	1.17	10.0	16.0	22.5		
10	0.618	565	670	1.19	8.5	13.5	20.5		
10	0.619	535	630	1.18	8.0	14.0	21.0		
10	0.617	540	635	1.18	9.5	15.0	22.0		
10	0.615	545	640	1.17	9.5	16.0	22.5		
10	0.620	550	630	1.15	8.5	13.5	21.0		
10	0.622	530	615	1.16	8.0	13.0	20.5		
10	0.619	540	625	1.16	8.5	14.0	21.0		
10	0.617	545	630	1.16	9.0	14.5	21.5		
10	0.617	545	625	1.15	9.5	15.0	22.0		
10	0.621	545	635	1.17	9.0	14.5	21.5		
10	0.616	535	615	1.15	8.5	13.5	20.5		
10	0.615	535	615	1.15	9.0	14.5	21.5		
10	0.622	555	645	1.16	8.5	13.5	21.0		
10	0.620	540	630	1.17	10.0	16.0	22.5		
10	0.617	540	635	1.18	9.5	15.0	22.0		
10	0.615	540	635	1.18	10.5	16.5	23.0		
10	0.621	545	635	1.17	10.0	15.5	22.5		
10	0.622	535	620	1.16	9.0	14.5	21.5		
10	0.618	530	615	1.16	8.5	14.0	21.0		
10	0.616	530	620	1.17	8.5	13.5	21.0		
10	0.616	545	630	1.16	10.0	15.0	22.0		
10	0.618	560	665	1.19	8.0	14.0	21.0		
10	0.615	560	660	1.18	8.0	14.5	21.5		
10	0.613	555	665	1.20	8.5	13.5	20.5		
10	0.619	540	640	1.19	11.0	16.5	23.0		
10	0.621	565	660	1.17	7.5	15.0	22.0		
10	0.617	555	640	1.15	8.0	14.0	21.0		
10	0.614	560	645	1.15	8.5	13.5	20.5		
10	0.618	535	620	1.16	10.0	15.0	22.0		
10	0.620	555	645	1.16	8.5	16.0	23.0		
10	0.616	560	650	1.16	9.0	14.0	21.5		
10	0.614	565	660	1.17	8.5	13.5	20.5		
10	0.617	535	620	1.16	8.0	15.5	22.0		
10	0.615	555	635	1.14	8.5	14.0	21.0		
10	0.613	550	635	1.15	8.5	13.5	20.5		
10	0.615	555	655	1.18	8.5	13.0	20.0		
10	0.619	550	645	1.17	10.0	15.5	21.5		
10	0.620	555	650	1.17	10.5	16.0	21.0		
10	0.615	545	635	1.17	9.5	15.0	22.0		
10	0.616	545	640	1.17	10.0	15.5	22.0		
10	0.617	550	645	1.17	10.0	15.5	21.5		
10	0.618	550	640	1.16	10.0	15.5	21.5		
10	0.615	545	635	1.17	9.5	15.0	22.0		
10	0.613	540	630	1.17	9.0	14.5	22.5		
10	0.619	555	650	1.17	10.0	15.5	21.0		
10	0.620	545	640	1.17	10.0	15.5	22.0		
10	0.614	545	635	1.17	9.5	15.0	22.0		
10	0.616	540	630	1.17	9.0	14.5	22.5		
10	0.620	550	645	1.17	10.0	15.5	21.5		
10	0.621	545	640	1.17	10.0	15.5	22.0		
10	0.617	540	635	1.18	9.5	15.0	22.5		

10	0.616	545	640	1.17	10.0	15.5	22.0	1.01	0.80
10	0.618	545	635	1.17	9.5	15.0	22.0		
10	0.619	545	635	1.17	9.5	15.0	22.0		
10	0.613	550	640	1.16	10.0	15.5	21.5		
10	0.614	545	635	1.17	9.5	15.0	22.0		
10	0.618	545	635	1.17	9.5	15.0	22.0		
10	0.617	545	640	1.17	10.0	15.5	22.0		
10	0.615	550	645	1.17	10.0	15.5	21.5		
10	0.616	550	645	1.17	10.0	15.5	21.5		
10	0.619	555	650	1.17	10.5	16.0	21.0		
10	0.620	555	660	1.19	11.0	16.5	21.0		
10	0.617	545	635	1.17	9.5	15.0	22.0		
10	0.616	545	635	1.17	9.5	15.0	22.0		
10	0.618	550	645	1.17	10.0	15.5	21.5		
10	0.619	545	640	1.17	10.0	15.5	22.0		
10	0.614	545	635	1.17	9.5	15.0	22.0		
10	0.615	550	640	1.16	10.0	15.5	21.5		
10	0.618	545	645	1.18	10.0	15.5	22.0		
10	0.617	550	645	1.17	10.0	15.5	21.5		
10	0.616	550	645	1.17	10.0	15.5	21.5		
10	0.615	550	640	1.16	10.0	15.5	21.5		
10	0.619	545	635	1.17	9.5	15.0	22.0		
10	0.618	545	635	1.17	9.5	15.0	22.0		
10	0.617	550	640	1.16	10.0	15.5	21.5		
10	0.616	555	650	1.17	10.0	15.5	21.0		
10	0.618	550	640	1.16	10.0	15.5	21.5		
10	0.617	545	635	1.17	9.5	15.0	22.0		
10	0.616	545	640	1.17	10.0	15.5	22.0		
10	0.614	545	635	1.17	9.5	15.0	22.0		
10	0.618	550	645	1.17	10.0	15.5	21.5		
10	0.617	545	640	1.17	10.0	15.5	22.0		
10	0.619	560	665	1.19	11.0	16.5	20.5		
10	0.617	545	635	1.17	9.5	15.0	22.0		
10	0.618	555	650	1.17	10.0	15.5	21.0		
10	0.618	560	655	1.17	10.5	16.0	20.5		
10	0.616	555	650	1.17	10.0	15.5	21.0		
10	0.614	545	635	1.17	9.5	15.0	22.0		
10	0.617	550	645	1.17	10.0	15.5	21.5		
10	0.619	555	650	1.17	10.0	15.5	21.0		
10	0.615	545	635	1.17	9.5	15.0	22.0		
10	0.614	550	645	1.17	10.0	15.5	21.5		
10	0.619	545	635	1.17	9.5	15.0	22.0		
10	0.620	545	640	1.17	10.0	15.5	22.0		
10	0.614	545	635	1.17	9.5	15.0	22.0		
10	0.615	550	640	1.16	10.0	15.0	21.5		
10	0.618	550	645	1.17	10.0	15.0	21.5		
10	0.617	540	630	1.17	9.0	14.0	22.5		
10	0.616	535	625	1.17	9.0	14.0	22.5		
10	0.614	535	620	1.16	8.5	13.5	22.5		
10	0.619	545	635	1.17	9.5	14.5	22.0		
10	0.621	550	640	1.16	10.0	15.0	21.5		
10	0.617	545	635	1.17	9.5	14.5	22.0		
10	0.616	545	630	1.16	9.0	14.0	22.0		
10	0.619	545	635	1.17	9.5	14.5	22.0		
10	0.621	550	640	1.16	10.0	15.0	21.5		
10	0.614	545	635	1.17	9.5	14.5	22.0		
10	0.615	545	635	1.17	9.5	14.5	22.0		
10	0.620	545	640	1.17	10.0	15.0	22.0		
10	0.622	540	630	1.17	9.0	14.0	22.5		
10	0.617	550	645	1.17	10.0	15.0	21.5		
10	0.616	545	635	1.17	9.5	14.5	22.0		
10	0.621	560	655	1.17	10.5	15.5	20.5		
10	0.619	555	645	1.16	10.0	15.0	21.0		
10	0.614	545	635	1.17	9.5	14.5	22.0		
10	0.613	550	640	1.16	10.0	15.0	21.5		
10	0.619	550	640	1.16	10.0	15.0	21.5		
10	0.621	545	635	1.17	9.5	14.5	22.0		
10	0.614	550	640	1.16	10.0	15.0	21.5		
10	0.617	555	650	1.17	10.0	15.0	21.0		
10	0.618	545	635	1.17	9.5	14.5	22.0		
10	0.617	550	640	1.16	10.0	15.0	21.5		
10	0.613	540	630	1.17	9.0	14.0	22.5		
10	0.614	535	625	1.17	9.0	14.0	22.5		
10	0.618	545	635	1.17	9.5	14.5	22.0		
10	0.620	540	630	1.17	9.0	14.0	22.5		
10	0.617	535	620	1.16	8.5	13.5	22.5		

10	0.618	540	630	1.17	9.0	14.0	22.5	1.01	0.65
10	0.618	545	635	1.17	9.5	14.5	22.0		
10	0.620	545	635	1.17	9.5	14.5	22.0		
10	0.617	550	640	1.16	10.0	15.0	21.5		
10	0.616	545	635	1.17	9.5	14.5	22.0		
10	0.618	555	645	1.16	10.0	15.0	21.0		
10	0.620	550	640	1.16	10.0	15.0	21.5		
10	0.614	545	635	1.17	9.5	14.5	22.0		
10	0.617	550	635	1.15	9.5	14.5	21.5		
10	0.615	545	630	1.16	9.0	14.0	22.0		
10	0.614	540	625	1.16	9.0	14.0	22.5		
10	0.611	560	645	1.15	10.0	15.0	21.0		
10	0.612	555	640	1.15	10.0	15.0	21.5		
10	0.616	535	615	1.15	8.5	13.5	22.5		
10	0.615	550	635	1.15	9.5	14.5	21.5		
10	0.614	535	610	1.14	8.5	13.5	22.5		
10	0.613	555	645	1.16	10.0	15.0	21.0		
10	0.617	535	615	1.15	8.5	13.5	22.5		
10	0.618	535	620	1.16	8.5	13.5	22.5		
10	0.615	535	615	1.15	8.5	13.5	22.5		
10	0.614	535	610	1.14	8.5	13.5	22.5		
10	0.618	550	640	1.16	10.0	15.0	21.5		
10	0.619	545	635	1.17	9.5	14.5	22.0		
10	0.613	550	635	1.15	9.5	14.5	21.5		
10	0.614	545	630	1.16	9.0	14.0	22.0		
10	0.617	535	615	1.15	8.5	13.5	22.5		
10	0.618	545	635	1.17	9.5	14.5	22.0		
10	0.618	550	640	1.16	10.0	15.0	21.5		
10	0.613	555	645	1.16	10.0	15.0	21.5		
10	0.619	550	635	1.15	9.5	14.5	21.5		
10	0.618	555	640	1.15	10.0	15.0	21.5		
10	0.612	560	650	1.16	10.0	15.0	21.0		
10	0.614	535	615	1.15	8.5	13.5	22.5		
10	0.617	550	640	1.16	9.0	14.0	22.0		
10	0.616	535	620	1.16	8.5	15.0	22.0		
10	0.611	540	625	1.16	8.0	14.0	21.0		
10	0.611	545	635	1.17	9.5	13.5	21.0		
10	0.618	550	635	1.15	10.0	15.0	20.0		
10	0.617	555	645	1.16	8.0	14.5	22.0		
10	0.613	535	630	1.18	9.5	15.5	23.0		
10	0.612	545	640	1.17	8.0	14.0	21.0		
10	0.618	540	625	1.16	9.5	13.5	21.0		
10	0.619	550	630	1.15	8.0	14.0	23.0		
10	0.613	555	640	1.15	9.5	14.0	21.0		
10	0.611	555	645	1.16	8.0	15.0	23.0		
10	0.612	560	650	1.16	9.5	14.0	21.0		
10	0.620	550	655	1.19	8.0	13.5	21.0		
10	0.617	545	650	1.19	9.5	14.0	22.0		
10	0.619	555	640	1.15	8.0	15.0	22.5		
10	0.613	545	645	1.18	10.0	14.0	20.0		
10	0.612	535	625	1.17	8.0	13.5	21.0		
10	0.619	555	630	1.14	9.5	14.0	22.0		
10	0.613	540	645	1.19	8.0	15.0	20.0		
10	0.614	545	640	1.17	9.5	14.0	21.0		
10	0.616	565	645	1.14	8.0	13.5	22.0		
10	0.614	560	625	1.12	9.5	14.0	20.0		
10	0.613	550	635	1.15	8.0	15.0	22.0		
10	0.615	560	625	1.12	9.0	14.0	20.0		
10	0.614	545	620	1.14	10.0	15.0	21.0		
10	0.609	540	635	1.18	8.0	15.0	21.0		
10	0.607	530	615	1.16	9.5	14.0	20.0		
10	0.610	530	630	1.19	8.0	13.5	23.0		
10	0.613	540	635	1.18	9.5	14.0	20.0		
10	0.611	545	615	1.13	8.0	15.0	20.5		
10	0.610	550	625	1.14	9.5	14.0	23.0		
10	0.611	555	640	1.15	8.0	13.5	21.0		
10	0.613	545	640	1.17	9.5	14.0	23.0		
10	0.611	545	625	1.15	8.0	15.0	21.0		
10	0.610	550	630	1.15	8.0	13.5	21.0		
10	0.610	550	630	1.15	9.0	13.5	22.0		
10	0.613	550	635	1.15	9.5	14.0	21.0		
10	0.611	545	635	1.17	10.0	15.0	23.0		
10	0.615	550	630	1.15	8.0	13.5	20.0		
10	0.613	535	630	1.18	9.5	14.0	22.0		
10	0.614	545	615	1.13	8.5	15.0	22.0		
10	0.613	535	615	1.15	9.0	14.0	20.0		

10	0.612	535	625	1.17	8.0	13.5	22.0	0.98	0.65
10	0.611	540	620	1.15	9.5	14.0	21.0		
10	0.614	535	615	1.15	10.0	15.0	21.5		
10	0.612	530	610	1.15	8.0	14.0	21.5		
10	0.610	540	610	1.13	9.5	15.0	20.0		
10	0.605	535	635	1.19	8.0	15.0	20.0		
10	0.607	595	670	1.13	9.5	14.0	20.0		
10	0.614	595	680	1.14	8.0	15.0	21.0		
10	0.611	560	650	1.16	9.5	16.0	20.0		
10	0.617	590	660	1.12	8.0	14.0	22.0		
10	0.614	575	650	1.13	9.0	15.5	22.0		
10	0.617	570	655	1.15	10.0	14.0	20.5		
10	0.616	560	640	1.14	8.0	15.0	22.0		
10	0.618	560	655	1.17	9.5	14.5	21.0		
10	0.612	555	650	1.17	8.0	15.0	23.0		
10	0.615	545	645	1.18	9.5	14.0	20.0		
10	0.614	560	660	1.18	8.0	13.5	21.0		
10	0.620	545	635	1.17	9.5	14.0	21.0		
10	0.619	555	630	1.14	8.0	15.0	21.5		
10	0.623	560	625	1.12	9.0	14.0	20.5		
10	0.624	555	620	1.12	8.0	15.5	21.0		
10	0.620	550	640	1.16	9.5	14.0	20.0		
10	0.619	545	645	1.18	8.0	13.5	21.0		
10	0.616	550	645	1.17	9.5	14.0	20.5		
10	0.613	550	645	1.17	8.5	15.0	22.5		
10	0.615	560	650	1.16	8.0	15.0	23.0		
10	0.620	535	635	1.19	9.0	14.0	21.0		
10	0.615	540	630	1.17	8.5	15.5	22.5		
10	0.619	550	635	1.15	9.0	16.0	22.0		
10	0.613	545	630	1.16	10.0	16.0	23.0		
10	0.614	550	640	1.16	10.0	15.0	22.0		
10	0.618	540	620	1.15	8.0	14.5	20.0		
10	0.619	545	620	1.14	9.5	15.0	23.0		
10	0.620	560	645	1.15	8.0	14.0	22.0		
10	0.619	550	615	1.12	9.5	15.0	20.0		
10	0.613	555	625	1.13	8.5	14.0	20.5		
10	0.618	550	630	1.15	9.0	15.0	23.0		
10	0.617	540	625	1.16	8.0	16.0	22.0		
10	0.619	530	615	1.16	9.0	15.0	22.5		
10	0.615	535	625	1.17	8.5	14.0	22.0		
10	0.620	530	625	1.18	9.0	15.5	21.5		
10	0.623	540	615	1.14	8.5	16.0	20.0		
10	0.619	530	615	1.16	9.0	14.5	22.5		
10	0.613	530	610	1.15	8.0	14.5	22.5		
10	0.612	535	615	1.15	9.0	15.5	22.0		
10	0.613	535	615	1.15	9.5	15.0	22.5		
10	0.619	530	620	1.17	8.0	14.0	21.5		
10	0.620	535	615	1.15	9.0	15.0	21.0		
10	0.621	535	625	1.17	8.0	15.0	21.5		
10	0.619	560	625	1.12	9.5	16.0	21.0		
10	0.620	535	630	1.18	8.0	14.0	22.5		
10	0.621	560	625	1.12	9.5	14.5	22.5		
10	0.623	550	640	1.16	8.0	15.5	21.0		
10	0.620	530	630	1.19	9.5	14.0	23.0		
10	0.615	535	610	1.14	8.0	15.5	20.5		
10	0.618	530	615	1.16	9.0	14.5	22.5		
10	0.622	530	615	1.16	10.0	14.0	21.5		
10	0.612	565	635	1.12	8.0	15.0	22.0		
10	0.613	560	630	1.13	9.5	14.0	22.0		
10	0.619	560	645	1.15	8.0	13.5	20.0		
10	0.618	545	630	1.16	9.5	14.0	21.0		
10	0.618	560	645	1.15	8.0	15.0	22.0		
10	0.613	560	655	1.17	9.0	16.0	22.5		
10	0.615	560	650	1.16	10.0	14.0	22.5		
10	0.619	550	640	1.16	9.5	15.5	22.0		
10	0.616	545	610	1.12	8.0	14.0	21.0		
10	0.617	555	625	1.13	9.5	15.0	21.0		
10	0.615	550	615	1.12	8.0	14.0	21.5		
10	0.617	560	630	1.13	10.0	15.5	20.5		
10	0.620	560	625	1.12	8.0	14.0	21.0		
10	0.619	550	620	1.13	9.5	14.5	20.5		
10	0.618	545	610	1.12	8.0	16.0	21.0		
10	0.614	550	620	1.13	10.0	15.5	22.0		
10	0.619	560	655	1.17	10.5	15.5	21.0		
10	0.618	565	645	1.14	10.0	15.0	20.5		
10	0.617	565	660	1.17	11.0	16.0	20.0		

10	0.616	555	645	1.16	10.0	15.0	21.0	0.85	0.54
10	0.619	560	650	1.16	10.0	15.0	20.5		
10	0.620	565	655	1.16	10.5	15.5	20.0		
10	0.618	560	655	1.17	10.5	15.5	20.5		
10	0.619	565	660	1.17	11.0	16.0	20.0		
10	0.620	560	655	1.17	10.5	15.5	20.5		
10	0.614	570	660	1.16	11.0	16.0	20.0		
10	0.614	555	640	1.15	10.0	15.0	21.0		
10	0.613	560	645	1.15	10.0	15.0	20.5		
10	0.615	555	650	1.17	10.0	15.0	21.0		
10	0.616	555	645	1.16	10.0	15.0	21.0		
10	0.614	560	655	1.17	10.5	15.5	20.5		
10	0.613	560	650	1.16	10.0	15.0	20.5		
10	0.617	560	655	1.17	10.5	15.5	20.5		
10	0.619	570	660	1.16	11.0	16.0	20.0		
10	0.616	560	655	1.17	10.5	15.5	20.5		
10	0.615	565	655	1.16	10.5	15.5	20.0		
10	0.619	565	660	1.17	11.0	16.0	20.0		
10	0.617	565	655	1.16	10.5	15.5	20.0		
10	0.617	560	650	1.16	10.0	15.0	20.5		
10	0.614	565	655	1.16	10.5	15.5	20.0		
10	0.621	545	630	1.16	9.0	14.0	22.0		
10	0.620	555	645	1.16	10.0	15.0	21.0		
10	0.619	545	640	1.17	10.0	15.0	22.0		
10	0.617	535	615	1.15	8.5	13.5	22.5		
10	0.612	540	615	1.14	8.5	13.5	22.5		
10	0.613	535	620	1.16	8.5	13.5	22.5		
10	0.615	560	655	1.17	10.5	15.5	20.5		
10	0.620	545	635	1.17	9.5	14.5	22.0		
10	0.614	535	625	1.17	9.0	14.0	22.5		
10	0.616	535	630	1.18	9.0	14.0	22.5		
10	0.615	530	610	1.15	8.5	13.5	23.0		
10	0.616	555	650	1.17	10.0	15.0	21.0		
10	0.617	555	645	1.16	10.0	15.0	21.0		
10	0.615	560	655	1.17	10.5	15.5	20.5		
10	0.619	540	630	1.17	9.0	14.0	22.5		
10	0.615	545	640	1.17	10.0	15.0	22.0		
10	0.615	550	645	1.17	10.0	15.0	21.5		
10	0.614	550	640	1.16	10.0	15.0	21.5		
10	0.615	560	650	1.16	10.0	15.0	20.5		
10	0.618	530	620	1.17	8.5	13.5	23.0		
10	0.618	540	630	1.17	9.0	14.0	22.5		
10	0.616	540	630	1.17	9.0	14.0	22.5		
10	0.614	550	640	1.16	10.0	15.0	21.5		
10	0.617	540	630	1.17	9.0	14.0	22.5		
10	0.618	540	625	1.16	9.0	14.0	22.5		
10	0.616	555	640	1.15	10.0	15.0	21.0		
10	0.615	530	615	1.16	8.5	13.5	23.0		
10	0.620	540	625	1.16	9.0	14.0	22.5		
10	0.619	535	625	1.17	9.0	14.0	22.5		
10	0.620	560	650	1.16	10.0	15.0	20.5		
10	0.617	535	615	1.15	8.5	13.5	22.5		
10	0.616	545	640	1.17	10.0	15.0	22.0		
10	0.616	545	630	1.16	9.0	14.0	22.0		
10	0.618	545	630	1.16	9.0	14.0	22.0		
10	0.615	535	615	1.15	8.5	13.5	22.5		
10	0.616	545	630	1.16	9.0	14.0	22.0		
10	0.617	555	650	1.17	10.0	15.0	21.0		
10	0.620	545	635	1.17	9.5	14.5	22.0		
10	0.618	550	645	1.17	10.0	15.0	21.5		
10	0.616	555	645	1.16	10.0	15.0	21.0		
10	0.617	535	610	1.14	8.5	13.5	22.5		
10	0.619	545	635	1.17	9.5	14.5	22.0		
10	0.615	530	610	1.15	8.5	13.5	23.0		
10	0.614	540	625	1.16	9.0	14.0	22.5		
10	0.620	530	610	1.15	8.5	13.5	23.0		
10	0.618	545	635	1.17	9.5	14.5	22.0		
10	0.615	555	650	1.17	10.0	15.0	21.0		
10	0.614	545	640	1.17	10.0	15.0	22.0		
10	0.621	550	640	1.16	10.0	15.0	21.5		
10	0.623	560	655	1.17	10.5	15.5	20.5		
10	0.618	545	640	1.17	10.0	15.0	22.0		
10	0.617	540	630	1.17	9.0	14.0	22.5		
10	0.616	540	625	1.16	9.0	14.0	22.5		
10	0.619	565	645	1.14	10.0	15.0	20.0		
10	0.615	555	650	1.17	10.0	15.0	21.0		

10	0.616	550	645	1.17	10.0	15.0	21.5	0.95	0.55
10	0.618	560	655	1.17	10.5	15.5	20.5		
10	0.616	555	650	1.17	10.0	15.0	21.0		
10	0.615	560	650	1.16	10.0	15.0	20.5		
10	0.613	555	640	1.15	10.0	15.0	21.0		
10	0.620	550	640	1.16	10.0	15.0	21.5		
10	0.621	555	645	1.16	10.0	15.0	21.0		
10	0.618	560	645	1.15	10.0	15.0	20.5		
10	0.616	545	630	1.16	9.0	14.0	22.0		
10	0.615	545	635	1.17	9.5	14.5	22.0		
10	0.615	560	655	1.17	10.5	15.5	20.5		
10	0.614	535	610	1.14	8.5	13.5	22.5		
10	0.614	540	625	1.16	9.0	14.0	22.5		
10	0.617	565	645	1.14	10.0	15.0	20.0		
10	0.618	555	645	1.16	10.0	15.0	21.0		
10	0.615	545	630	1.16	9.0	14.0	22.0		
10	0.613	540	630	1.17	9.0	14.0	22.5		
10	0.618	555	645	1.16	10.0	15.0	21.0		
10	0.619	535	615	1.15	8.5	13.5	22.5		
10	0.617	540	625	1.16	9.0	14.0	22.5		
10	0.615	545	630	1.16	9.0	14.0	22.0		
10	0.620	550	630	1.15	9.0	14.0	21.5		
10	0.622	530	615	1.16	8.5	13.5	23.0		
10	0.619	540	625	1.16	9.0	14.0	22.5		
10	0.617	545	630	1.16	9.0	14.0	22.0		
10	0.617	545	625	1.15	9.0	14.0	22.0		
10	0.621	545	635	1.17	9.5	14.5	22.0		
10	0.616	535	615	1.15	8.5	13.5	22.5		
10	0.615	535	615	1.15	8.5	13.5	22.5		
10	0.622	555	645	1.16	10.0	15.0	21.0		
10	0.620	540	630	1.17	9.0	14.0	22.5		
10	0.617	540	625	1.16	9.0	14.0	22.5		
10	0.615	540	630	1.17	9.0	14.0	22.5		
10	0.621	545	635	1.17	9.5	14.5	22.0		
10	0.622	535	620	1.16	8.5	13.5	22.5		
10	0.618	535	615	1.15	8.5	13.5	22.5		
10	0.616	535	620	1.16	8.5	13.5	22.5		
10	0.619	545	630	1.16	10.0	16.0	22.0		
10	0.618	545	630	1.16	9.0	15.5	22.0		
10	0.615	530	615	1.16	9.0	14.5	21.0		
10	0.615	540	620	1.15	9.0	14.5	21.0		
10	0.622	550	630	1.15	10.0	16.5	22.5		
10	0.615	540	630	1.17	9.5	15.0	21.5		
10	0.617	545	630	1.16	9.5	15.5	22.0		
10	0.620	555	640	1.15	10.0	16.0	22.5		
10	0.613	560	645	1.15	9.5	16.0	22.5		
10	0.619	560	645	1.15	9.5	15.5	22.0		
10	0.616	545	630	1.16	9.0	15.0	21.5		
10	0.614	545	625	1.15	8.5	14.0	21.0		
10	0.618	540	625	1.16	8.5	14.0	21.0		
10	0.622	545	625	1.15	9.0	14.5	21.5		
10	0.619	540	620	1.15	8.5	14.0	21.0		
10	0.617	555	645	1.16	9.5	15.5	22.0		
10	0.612	560	655	1.17	10.0	16.0	22.5		
10	0.614	555	660	1.19	9.5	15.5	22.0		
10	0.613	560	655	1.17	9.5	15.5	22.0		
10	0.614	545	635	1.17	9.0	15.0	21.5		
10	0.613	545	635	1.17	9.5	15.5	22.0		
10	0.615	545	630	1.16	9.0	14.0	21.0		
10	0.611	555	645	1.16	10.0	16.0	22.0		
10	0.612	555	650	1.17	10.0	15.5	22.0		
10	0.621	555	655	1.18	10.0	16.0	22.5		
10	0.615	560	655	1.17	8.5	14.0	21.0		
10	0.614	560	660	1.18	8.0	14.5	21.5		
10	0.619	560	650	1.16	9.0	15.0	22.0		
10	0.623	555	645	1.16	9.5	15.5	22.0		
10	0.618	555	650	1.17	10.0	16.0	22.5		
10	0.616	550	640	1.16	9.5	15.5	22.0		
10	0.621	560	655	1.17	10.0	16.0	22.5		
10	0.615	550	635	1.15	9.5	15.5	22.0		
10	0.611	550	635	1.15	9.0	14.5	21.5		
10	0.615	540	625	1.16	8.5	14.0	21.0		
10	0.612	560	650	1.16	10.0	16.0	22.5		
10	0.616	550	640	1.16	10.0	16.0	22.5		
10	0.613	560	645	1.15	9.5	15.0	22.0		
10	0.613	555	650	1.17	9.5	15.5	22.0		

10	0.614	560	655	1.17	10.0	16.0	22.5	1.04	0.62
10	0.618	560	660	1.18	9.0	14.5	21.5		
10	0.615	555	645	1.16	9.5	15.5	22.0		
10	0.614	545	630	1.16	9.0	14.5	21.5		
10	0.616	535	625	1.17	8.5	14.0	21.0		
10	0.618	550	640	1.16	9.5	15.5	22.0		
10	0.621	550	635	1.15	9.5	15.5	22.0		
10	0.619	555	645	1.16	10.0	16.0	22.5		
10	0.618	550	635	1.15	10.0	16.0	22.5		
10	0.615	550	640	1.16	10.0	16.0	22.5		
10	0.612	555	635	1.14	9.5	15.0	21.5		
10	0.614	545	640	1.17	9.5	15.0	21.5		
10	0.616	560	640	1.14	10.0	16.0	22.0		
10	0.615	550	635	1.15	9.0	14.5	21.0		
10	0.613	555	640	1.15	9.5	15.5	22.0		
10	0.611	540	625	1.16	8.5	14.0	21.0		
10	0.614	560	650	1.16	9.5	15.5	22.0		
10	0.616	550	635	1.15	9.5	15.5	22.0		
10	0.613	560	640	1.14	9.0	15.0	21.5		
10	0.612	550	640	1.16	9.0	14.5	21.5		
10	0.613	550	635	1.15	9.5	15.5	22.0		
10	0.618	550	640	1.16	9.5	15.5	22.0		
10	0.616	550	635	1.15	9.5	14.5	21.5		
10	0.614	535	625	1.17	8.5	14.0	21.0		
10	0.615	535	625	1.17	8.5	14.0	20.5		
10	0.621	540	630	1.17	9.0	15.0	21.5		
10	0.619	555	640	1.15	9.5	15.5	22.0		
10	0.616	550	640	1.16	9.5	15.5	22.0		
10	0.620	560	645	1.15	10.0	16.0	22.5		
10	0.614	555	635	1.14	10.0	16.0	22.0		
10	0.617	555	640	1.15	10.0	16.0	22.0		
10	0.615	560	645	1.15	10.5	16.5	22.5		
10	0.616	560	650	1.16	10.0	16.0	22.5		
10	0.621	535	620	1.16	9.5	15.5	22.5		
10	0.618	540	625	1.16	10.0	16.0	22.5		
10	0.616	530	605	1.14	8.5	13.5	21.0		
10	0.614	535	620	1.16	9.0	14.5	21.5		
10	0.621	560	650	1.16	8.5	13.5	20.5		
10	0.618	560	655	1.17	8.5	14.0	21.0		
10	0.618	565	660	1.17	8.0	13.5	20.0		
10	0.619	530	610	1.15	8.0	13.0	20.5		
10	0.617	535	610	1.14	9.0	14.0	21.0		
10	0.619	530	615	1.16	9.5	15.0	22.0		
10	0.616	540	615	1.14	9.0	14.5	21.5		
10	0.617	530	615	1.16	10.5	16.5	23.0		
10	0.618	535	615	1.15	8.0	13.0	20.5		
10	0.619	525	620	1.18	9.5	13.5	22.0		
10	0.616	525	615	1.17	8.0	13.0	20.0		
10	0.617	530	605	1.14	8.0	13.0	20.0		
10	0.618	560	645	1.15	8.5	14.0	21.0		
10	0.620	555	640	1.15	9.0	14.5	21.5		
10	0.615	560	650	1.16	8.5	13.5	20.5		
10	0.618	555	645	1.16	8.5	14.0	21.0		
10	0.620	550	640	1.16	8.0	13.0	20.0		
10	0.622	555	645	1.16	8.5	13.5	21.0		
10	0.618	560	645	1.15	8.0	13.5	20.5		
10	0.620	545	645	1.18	9.5	16.0	22.5		
10	0.618	545	640	1.17	10.0	16.5	23.0		
10	0.620	560	655	1.17	8.5	13.5	21.0		
10	0.618	535	630	1.18	10.0	16.0	22.5		
10	0.616	540	635	1.18	10.5	16.5	23.0		
10	0.619	560	655	1.17	9.0	14.5	21.5		
10	0.619	545	635	1.17	9.5	15.0	22.0		
10	0.617	540	620	1.15	10.0	15.5	22.5		
10	0.615	545	635	1.17	10.0	16.5	23.0		
10	0.616	555	650	1.17	8.5	14.0	21.0		
10	0.617	545	635	1.17	10.0	16.5	23.0		
10	0.614	540	625	1.16	9.5	15.5	22.5		
10	0.616	540	630	1.17	9.5	15.0	22.0		
10	0.619	560	655	1.17	8.0	13.5	20.5		
10	0.621	555	640	1.15	8.5	14.0	21.0		
10	0.615	550	640	1.16	9.0	14.5	21.5		
10	0.613	550	640	1.16	9.0	14.0	21.5		
10	0.618	550	650	1.18	9.5	15.0	22.0		
10	0.620	545	640	1.17	9.5	15.5	22.0		
10	0.615	555	655	1.18	8.0	13.5	20.5		

1.04

0.62

0.94

0.65

1.0

0.6

10	0.617	560	645	1.15	8.5	13.0	20.5	1.05	0.65
10	0.619	555	645	1.16	8.5	14.0	21.0		
10	0.620	535	620	1.16	9.0	14.5	21.5		
10	0.618	530	600	1.13	8.5	13.5	20.5		
10	0.619	540	635	1.18	10.0	15.5	22.5		
10	0.616	530	610	1.15	8.5	14.0	21.0		
10	0.617	560	645	1.15	9.0	14.5	21.5		
10	0.615	550	630	1.15	8.5	13.5	21.0		
10	0.614	545	625	1.15	10.0	16.0	22.5		
10	0.618	545	630	1.16	9.5	15.0	22.0		
10	0.620	555	645	1.16	9.0	14.0	21.5		
10	0.618	545	640	1.17	10.0	16.5	23.0		
10	0.621	535	620	1.16	9.0	14.5	21.5		
10	0.620	540	625	1.16	9.5	15.0	22.0		
10	0.622	535	610	1.14	8.5	13.5	21.0		
10	0.618	560	655	1.17	8.5	14.0	21.0		
10	0.617	545	625	1.15	10.0	16.0	23.0		
10	0.619	535	625	1.17	9.5	15.0	22.0		
10	0.621	535	630	1.18	9.0	14.5	21.5		
10	0.615	530	610	1.15	8.5	14.0	21.0		
10	0.617	555	650	1.17	9.0	14.5	21.5		
10	0.619	540	630	1.17	9.0	14.0	22.5		
10	0.620	550	640	1.16	10.0	15.0	21.5		
10	0.615	550	635	1.15	9.5	14.5	21.5		
10	0.616	550	635	1.15	9.5	14.5	21.5		
10	0.614	555	645	1.16	10.0	15.0	21.0		
10	0.615	555	645	1.16	10.0	15.0	21.0		
10	0.614	550	635	1.15	9.5	14.5	21.5		
10	0.616	550	635	1.15	9.5	14.5	21.5		
10	0.614	550	640	1.16	10.0	15.0	21.5		
10	0.613	550	635	1.15	9.5	14.5	21.5		
10	0.615	545	630	1.16	9.0	14.0	22.0		
10	0.617	550	635	1.15	9.5	14.5	21.5		
10	0.619	550	640	1.16	10.0	15.0	21.5		
10	0.620	545	630	1.16	9.0	14.0	22.0		
10	0.614	540	625	1.16	9.0	14.0	22.5		
10	0.616	540	625	1.16	9.0	14.0	22.5		
10	0.618	535	615	1.15	8.5	13.5	22.5		
10	0.617	550	640	1.16	10.0	15.0	21.5		
10	0.619	535	615	1.15	8.5	13.5	22.5		
10	0.617	540	625	1.16	9.0	14.0	22.5		
10	0.618	540	630	1.17	9.0	14.0	22.5		
10	0.619	540	625	1.16	9.0	14.0	22.5		
10	0.618	535	610	1.14	8.5	13.5	22.5		
10	0.617	540	625	1.16	9.0	14.0	22.5		
10	0.616	535	615	1.15	8.5	13.5	22.5		
10	0.614	540	625	1.16	9.0	14.0	22.5		
10	0.618	550	640	1.16	10.0	15.0	21.5		
10	0.618	545	635	1.17	9.5	14.5	22.0		
10	0.617	540	630	1.17	9.0	14.0	22.5		
10	0.616	550	640	1.16	10.0	15.0	21.5		
10	0.614	550	635	1.15	9.5	14.5	21.5		
10	0.615	550	640	1.16	10.0	15.0	21.5		
10	0.615	545	630	1.16	9.0	14.0	22.0		
10	0.615	555	645	1.16	10.0	15.0	21.0		
10	0.616	545	630	1.16	9.0	14.0	22.0		
10	0.618	550	640	1.16	10.0	15.0	21.5		
10	0.619	535	615	1.15	8.5	13.5	22.5		
10	0.617	550	640	1.16	10.0	15.0	21.5		
10	0.618	550	635	1.15	9.5	14.5	21.5		
10	0.618	550	640	1.16	10.0	15.0	21.5		
10	0.619	540	625	1.16	9.0	14.0	22.5		
10	0.618	550	635	1.15	9.5	14.5	21.5		
10	0.617	545	630	1.16	9.0	14.0	22.0		
10	0.617	550	635	1.15	9.5	14.5	21.5		
10	0.616	535	620	1.16	8.5	13.5	22.5		
10	0.617	545	630	1.16	9.0	14.0	22.0		
10	0.616	535	615	1.15	8.5	13.5	22.5		
10	0.618	550	640	1.16	10.0	15.0	21.5		
10	0.618	545	630	1.16	9.0	14.0	22.0		
10	0.613	545	625	1.15	9.0	14.0	22.0		
10	0.614	535	615	1.15	8.5	13.5	22.5		
10	0.618	545	630	1.16	9.0	14.0	22.0		
10	0.617	540	625	1.16	9.0	14.0	22.5		
10	0.618	540	625	1.16	9.0	14.0	22.5		
10	0.616	535	620	1.16	8.5	13.5	22.5		

10	0.617	540	625	1.16	9.0	14.0	22.5	1.02	0.56
10	0.619	545	630	1.16	9.0	14.0	22.0		
10	0.617	550	635	1.15	9.5	14.5	21.5		
10	0.621	545	630	1.16	9.0	14.0	22.0		
10	0.619	545	630	1.16	9.0	14.0	22.0		
10	0.612	555	640	1.15	9.5	15.0	22.0		
10	0.610	550	635	1.15	9.0	14.5	21.5		
10	0.610	560	645	1.15	9.5	15.5	22.5		
10	0.608	545	630	1.16	9.0	14.5	21.0		
10	0.614	550	635	1.15	9.5	15.5	22.0		
10	0.615	535	625	1.17	9.0	15.0	21.0		
10	0.613	550	635	1.15	10.0	16.0	22.5		
10	0.612	555	640	1.15	10.0	16.0	22.5		
10	0.616	555	645	1.16	9.5	15.5	22.0		
10	0.618	560	650	1.16	10.0	16.0	22.5		
10	0.614	555	645	1.16	9.5	15.5	22.0		
10	0.615	555	645	1.16	9.5	15.5	22.0		
10	0.617	550	640	1.16	9.0	15.0	21.5		
10	0.619	555	645	1.16	8.5	14.0	21.0		
10	0.618	555	640	1.15	9.0	15.0	21.5		
10	0.616	560	645	1.15	9.5	15.5	22.0		
10	0.615	550	640	1.16	9.5	15.5	22.0		
10	0.618	555	645	1.16	10.0	16.0	22.5		
10	0.614	555	650	1.17	10.0	16.0	22.5		
10	0.612	550	640	1.16	9.5	15.5	22.0		
10	0.615	560	640	1.14	9.0	15.0	21.5		
10	0.617	555	635	1.14	9.5	15.5	22.0		
10	0.615	555	655	1.18	9.5	15.5	22.0		
10	0.614	545	630	1.16	8.5	14.5	21.5		
10	0.616	560	645	1.15	9.5	15.5	22.5		
10	0.612	555	640	1.15	10.0	16.0	22.5		
10	0.616	560	645	1.15	9.0	14.0	21.0		
10	0.615	555	640	1.15	9.0	15.0	22.0		
10	0.618	540	625	1.16	9.0	14.5	21.0		
10	0.615	560	645	1.15	9.5	15.5	22.0		
10	0.615	550	635	1.15	9.5	15.0	21.5		
10	0.613	550	630	1.15	9.0	14.5	21.5		
10	0.617	555	650	1.17	9.5	15.5	22.0		
10	0.619	565	655	1.16	9.5	15.5	22.0		
10	0.615	560	650	1.16	9.0	14.5	21.0		
10	0.615	560	655	1.17	9.5	15.5	22.5		
10	0.619	555	645	1.16	9.0	15.0	21.5		
10	0.617	560	655	1.17	8.5	14.5	21.0		
10	0.613	560	655	1.17	8.5	14.5	21.0		
10	0.618	560	655	1.17	9.0	14.5	21.5		
10	0.614	555	645	1.16	9.5	15.5	22.0		
10	0.612	555	645	1.16	9.5	15.5	22.0		
10	0.615	555	645	1.16	10.5	16.0	22.5		
10	0.616	555	645	1.16	10.0	15.5	22.0		
10	0.619	550	635	1.15	9.0	15.0	21.5		
10	0.616	550	635	1.15	9.5	16.0	22.0		
10	0.615	560	640	1.14	9.0	15.0	21.5		
10	0.615	540	625	1.16	9.0	15.0	21.0		
10	0.614	540	625	1.16	8.5	14.5	21.0		
10	0.611	535	625	1.17	8.0	14.0	20.5		
10	0.612	545	630	1.16	8.5	14.5	21.5		
10	0.614	560	640	1.14	9.5	15.5	22.0		
10	0.617	545	630	1.16	9.0	15.0	21.5		
10	0.618	545	635	1.17	10.0	16.0	22.5		
10	0.614	550	635	1.15	9.5	15.5	22.0		
10	0.615	550	635	1.15	9.5	15.5	22.0		
10	0.619	545	630	1.16	9.0	14.5	21.5		
10	0.621	545	630	1.16	9.0	15.0	22.0		
10	0.621	550	635	1.15	8.5	14.0	21.0		
10	0.618	550	635	1.15	9.0	15.5	22.0		
10	0.615	545	630	1.16	9.5	15.5	22.0		
10	0.620	550	635	1.15	9.0	14.5	21.0		
10	0.619	545	630	1.16	9.5	15.0	21.5		
10	0.618	540	625	1.16	9.0	14.5	21.0		
10	0.621	560	650	1.16	9.5	15.5	22.0		
10	0.618	545	625	1.15	9.0	15.0	21.5		
10	0.617	540	625	1.16	9.0	14.5	21.0		
10	0.619	550	635	1.15	9.5	15.5	22.0		
10	0.622	535	625	1.17	8.5	14.0	21.0		
10	0.623	555	640	1.15	9.0	15.0	21.5		
10	0.620	550	635	1.15	8.5	14.5	21.0		

1.04

0.65

10	0.618	540	625	1.16	9.0	15.5	22.0
10	0.619	540	640	1.19	9.0	14.5	21.5
10	0.620	540	640	1.19	10.0	16.0	22.5
10	0.619	555	655	1.18	8.5	13.5	21.0
10	0.617	550	650	1.18	10.0	15.5	22.5
10	0.622	540	630	1.17	8.0	13.0	20.5
10	0.621	540	635	1.18	10.0	16.5	23.0
10	0.619	550	640	1.16	9.0	14.5	21.5
10	0.618	545	635	1.17	9.5	15.0	22.0
10	0.617	545	640	1.17	10.0	16.5	23.0
10	0.616	545	640	1.17	9.5	16.0	22.5
10	0.613	550	650	1.18	8.5	14.0	21.0
10	0.614	535	635	1.19	9.0	15.0	22.0
10	0.615	545	645	1.18	9.0	14.0	21.5
10	0.614	555	645	1.16	9.0	14.5	21.5
10	0.612	560	650	1.16	8.0	13.5	20.5
10	0.613	550	650	1.18	9.0	14.0	21.5
10	0.617	545	640	1.17	10.0	15.5	22.5
10	0.615	545	640	1.17	8.5	13.5	20.5
10	0.616	545	640	1.17	8.5	14.0	21.0
10	0.614	540	635	1.18	10.0	16.0	23.0
10	0.618	540	635	1.18	9.5	14.5	22.0
10	0.616	555	655	1.18	10.0	16.0	22.5
10	0.614	555	650	1.17	10.0	16.0	22.5
10	0.613	550	645	1.17	9.0	14.0	21.5
10	0.621	555	650	1.17	9.0	14.5	21.5
10	0.618	560	655	1.17	8.5	13.5	20.5
10	0.615	560	650	1.16	8.0	14.0	21.0
10	0.613	560	650	1.16	8.0	13.5	20.5
10	0.619	545	635	1.17	10.0	15.5	22.5
10	0.621	560	650	1.16	8.5	13.0	20.0
10	0.620	565	665	1.18	8.5	13.5	21.0
10	0.619	565	655	1.16	8.0	13.0	20.5
10	0.621	550	645	1.17	9.0	14.0	21.5
10	0.621	560	650	1.16	8.5	13.5	21.0
10	0.620	560	660	1.18	8.5	13.5	21.0
10	0.618	560	650	1.16	8.5	13.0	20.5
10	0.630	555	665	1.20	8.5	13.5	20.5
10	0.614	560	655	1.17	9.0	14.0	21.0
10	0.621	560	650	1.16	8.5	13.0	20.5
10	0.620	565	665	1.18	8.5	13.5	20.5
10	0.621	555	650	1.17	9.0	14.0	21.0
10	0.616	560	655	1.17	8.5	13.5	20.5
10	0.620	560	655	1.17	8.5	14.0	21.0
10	0.621	565	650	1.15	9.0	14.5	21.5
10	0.623	555	655	1.18	8.5	13.5	21.0
10	0.619	560	650	1.16	9.0	14.0	21.5
10	0.620	560	655	1.17	8.5	13.5	21.0
10	0.621	555	650	1.17	8.0	13.0	20.5
10	0.623	545	630	1.16	9.5	15.5	22.0
10	0.621	550	630	1.15	9.0	14.5	21.5
10	0.618	560	640	1.14	8.5	13.5	21.0
10	0.618	560	645	1.15	10.0	14.5	22.0
10	0.621	555	645	1.16	9.0	14.0	21.5
10	0.623	560	650	1.16	9.0	15.0	22.0
10	0.621	550	635	1.15	10.0	15.5	22.0
10	0.620	555	640	1.15	9.0	14.5	21.5
10	0.618	545	625	1.15	9.5	15.0	22.0
10	0.621	545	625	1.15	10.0	15.5	22.0
10	0.620	545	630	1.16	9.5	16.0	22.0
10	0.618	540	625	1.16	9.0	14.5	21.5
10	0.622	535	625	1.17	10.0	15.0	22.0
10	0.619	540	620	1.15	8.5	13.5	21.0
10	0.618	545	630	1.16	8.5	14.0	21.0
10	0.617	545	625	1.15	9.0	14.5	21.5
10	0.619	540	620	1.15	8.5	13.5	21.0
10	0.618	550	635	1.15	9.0	14.0	21.5
10	0.615	550	635	1.15	9.5	15.0	22.0
10	0.616	550	630	1.15	10.0	15.5	22.0
10	0.617	555	635	1.14	8.5	13.5	21.0
10	0.616	550	630	1.15	8.5	14.0	21.0
10	0.615	555	640	1.15	9.0	13.5	21.0
10	0.618	550	635	1.15	9.5	15.0	22.0
10	0.619	560	650	1.16	10.0	15.5	22.0
10	0.620	560	645	1.15	9.5	16.0	22.0
10	0.621	545	630	1.16	9.0	14.5	21.5

1.1

0.6

1.02

0.65

10	0.621	560	650	1.16	10.0	15.0	22.0	0.95	0.62
10	0.621	555	655	1.18	9.0	14.5	21.5		
10	0.618	560	685	1.22	9.5	15.0	22.0		
10	0.617	540	635	1.18	8.5	13.5	21.0		
10	0.619	545	640	1.17	10.5	16.0	23.0		
10	0.620	550	650	1.18	9.5	15.5	22.0		
10	0.621	550	650	1.18	8.5	13.5	21.0		
10	0.623	560	665	1.19	9.0	14.0	21.0		
10	0.623	530	640	1.21	9.0	13.5	21.0		
10	0.621	540	645	1.19	10.0	16.0	22.5		
10	0.622	540	630	1.17	9.5	15.0	22.0		
10	0.620	550	655	1.19	8.5	13.5	21.0		
10	0.618	540	635	1.18	9.0	15.0	22.0		
10	0.617	540	640	1.19	10.5	16.5	23.0		
10	0.615	555	660	1.19	8.5	14.0	21.0		
10	0.614	530	625	1.18	9.0	13.0	21.0		
10	0.613	540	625	1.16	10.5	16.5	23.0		
10	0.619	530	625	1.18	8.5	13.5	21.0		
10	0.620	560	665	1.19	8.5	14.0	21.0		
10	0.615	535	625	1.17	9.0	13.5	21.0		
10	0.621	545	640	1.17	10.5	16.5	23.0		
10	0.618	545	645	1.18	10.0	15.5	22.5		
10	0.620	545	635	1.17	9.5	15.0	22.0		
10	0.621	535	625	1.17	9.5	15.5	22.0		
10	0.616	545	625	1.15	10.0	16.0	22.0		
10	0.618	555	650	1.17	9.0	14.5	21.5		
10	0.617	545	635	1.17	8.5	14.0	21.0		
10	0.619	550	645	1.17	10.5	16.5	23.0		
10	0.612	555	655	1.18	8.5	13.5	21.0		
10	0.614	535	630	1.18	9.5	15.0	22.0		
10	0.615	545	635	1.17	8.5	13.5	21.0		
10	0.613	530	625	1.18	10.0	16.5	23.0		
10	0.618	540	635	1.18	8.0	13.0	20.0		
10	0.617	530	625	1.18	8.5	14.0	21.0		
10	0.619	545	635	1.17	8.5	13.5	21.0		
10	0.621	555	650	1.17	9.0	13.5	21.0		
10	0.620	545	640	1.17	9.0	14.0	21.0		
10	0.621	550	650	1.18	8.5	15.5	22.0		
10	0.623	560	665	1.19	8.5	13.0	20.0		
10	0.615	545	640	1.17	8.0	14.0	21.0		
10	0.617	540	660	1.22	8.0	13.0	20.0		
10	0.618	540	645	1.19	10.0	16.0	22.5		
10	0.620	565	680	1.20	8.5	13.5	20.0		
10	0.621	555	675	1.22	9.0	14.0	21.0		
10	0.621	550	640	1.16	8.5	13.5	20.5		
10	0.620	550	645	1.17	9.5	15.5	22.0		
10	0.620	550	645	1.17	8.5	14.0	21.0		
10	0.619	540	635	1.18	10.0	16.0	22.5		
10	0.618	545	640	1.17	9.5	15.5	22.0		
10	0.618	535	625	1.17	10.0	16.0	22.5		
10	0.620	560	650	1.16	8.5	13.5	20.5		
10	0.618	550	655	1.19	8.5	14.0	21.0		
10	0.617	555	655	1.18	8.5	13.5	21.0		
10	0.620	560	670	1.20	8.0	13.0	20.5		
10	0.624	560	650	1.16	9.0	14.5	21.5		
10	0.619	560	650	1.16	8.5	13.0	20.0		
10	0.620	555	660	1.19	9.5	15.5	22.0		
10	0.618	550	640	1.16	8.5	13.5	20.0		
10	0.623	555	645	1.16	9.0	14.0	21.0		
10	0.618	560	645	1.15	8.5	13.5	20.5		
10	0.619	545	645	1.18	10.0	16.0	22.5		
10	0.620	545	650	1.19	10.5	16.5	23.0		
10	0.624	560	655	1.17	8.5	14.0	21.0		
10	0.619	535	630	1.18	9.5	15.5	22.5		
10	0.620	540	635	1.18	10.5	16.5	23.0		
10	0.616	555	655	1.18	9.5	15.5	22.0		
10	0.620	555	640	1.15	10.0	16.0	22.0		
10	0.617	560	645	1.15	8.5	13.5	20.0		
10	0.618	560	650	1.16	8.5	14.0	20.0		
10	0.619	550	635	1.15	10.5	16.5	23.0		
10	0.622	540	630	1.17	9.0	14.0	21.0		
10	0.620	545	635	1.17	9.5	15.0	22.0		
10	0.621	555	640	1.15	8.5	13.5	21.0		
10	0.620	530	615	1.16	9.0	14.0	21.0		
10	0.623	525	610	1.16	9.5	15.5	22.0		
10	0.618	550	640	1.16	10.0	16.0	23.0		

0.95

0.62

0.92

0.82

10	0.619	540	630	1.17	8.5	13.5	21.0	0.88	0.67
10	0.620	560	645	1.15	8.5	14.0	21.0		
10	0.622	560	640	1.14	9.0	14.5	21.5		
10	0.619	555	640	1.15	9.5	15.5	22.0		
10	0.621	555	650	1.17	10.0	16.0	22.5		
10	0.619	550	635	1.15	9.5	14.5	21.5		
10	0.620	555	640	1.15	10.0	15.0	21.0		
10	0.615	545	630	1.16	9.0	14.0	22.0		
10	0.616	545	625	1.15	9.0	14.0	22.0		
10	0.617	550	635	1.15	9.5	14.5	21.5		
10	0.618	550	640	1.16	10.0	15.0	21.5		
10	0.615	545	630	1.16	9.0	14.0	22.0		
10	0.613	540	620	1.15	8.5	13.5	22.5		
10	0.619	555	645	1.16	10.0	15.0	21.0		
10	0.620	545	630	1.16	9.0	14.0	22.0		
10	0.614	545	630	1.16	9.0	14.0	22.0		
10	0.616	540	625	1.16	9.0	14.0	22.5		
10	0.620	550	635	1.15	9.5	14.5	21.5		
10	0.621	545	630	1.16	9.0	14.0	22.0		
10	0.617	540	620	1.15	8.5	13.5	22.5		
10	0.616	545	625	1.15	9.0	14.0	22.0		
10	0.618	545	630	1.16	9.0	14.0	22.0		
10	0.619	545	625	1.15	9.0	14.0	22.0		
10	0.613	550	640	1.16	10.0	15.0	21.5		
10	0.614	545	630	1.16	9.0	14.0	22.0		
10	0.618	545	630	1.16	9.0	14.0	22.0		
10	0.617	545	630	1.16	9.0	14.0	22.0		
10	0.615	550	635	1.15	9.5	14.5	21.5		
10	0.616	550	635	1.15	9.5	14.5	21.5		
10	0.619	555	645	1.16	10.0	15.0	21.0		
10	0.620	555	640	1.15	10.0	15.0	21.0		
10	0.617	545	630	1.16	9.0	14.0	22.0		
10	0.616	545	630	1.16	9.0	14.0	22.0		
10	0.618	550	640	1.16	10.0	15.0	21.5		
10	0.619	545	630	1.16	9.0	14.0	22.0		
10	0.614	545	630	1.16	9.0	14.0	22.0		
10	0.615	550	635	1.15	9.5	14.5	21.5		
10	0.618	545	630	1.16	9.0	14.0	22.0		
10	0.617	550	635	1.15	9.5	14.5	21.5		
10	0.616	550	630	1.15	9.0	14.0	21.5		
10	0.615	550	635	1.15	9.5	14.5	21.5		
10	0.619	545	625	1.15	9.0	14.0	22.0		
10	0.618	545	630	1.16	9.0	14.0	22.0		
10	0.617	550	640	1.16	10.0	15.0	21.5		
10	0.616	555	650	1.17	10.0	15.0	21.0		
10	0.618	550	640	1.16	10.0	15.0	21.5		
10	0.617	545	630	1.16	9.0	14.0	22.0		
10	0.616	545	630	1.16	9.0	14.0	22.0		
10	0.614	545	625	1.15	9.0	14.0	22.0		
10	0.618	550	635	1.15	9.5	14.5	21.5		
10	0.617	545	630	1.16	9.0	14.0	22.0		
10	0.619	560	650	1.16	10.0	15.0	20.5		
10	0.617	545	625	1.15	9.0	14.0	22.0		
10	0.618	555	645	1.16	10.0	15.0	21.0		
10	0.618	560	650	1.16	10.0	15.0	20.5		
10	0.616	555	645	1.16	10.0	15.0	21.0		
10	0.614	545	630	1.16	9.0	14.0	22.0		
10	0.617	550	635	1.15	9.5	14.5	21.5		
10	0.619	555	645	1.16	10.0	15.0	21.0		
10	0.615	545	630	1.16	9.0	14.0	22.0		
10	0.614	550	635	1.15	9.5	14.5	21.5		
10	0.619	545	630	1.16	9.0	14.0	22.0		
10	0.620	545	630	1.16	9.0	14.0	22.0		
10	0.614	545	625	1.15	9.0	14.0	22.0		
10	0.615	550	635	1.15	9.5	14.5	21.5		
10	0.618	550	635	1.15	9.5	14.5	21.5		
10	0.617	540	625	1.16	9.0	14.0	22.5		
10	0.616	535	615	1.15	8.5	13.5	22.5		
10	0.614	535	610	1.14	8.5	13.5	22.5		
10	0.619	545	630	1.16	9.0	14.0	22.0		
10	0.621	550	635	1.15	9.5	14.5	21.5		
10	0.617	545	630	1.16	9.0	14.0	22.0		
10	0.616	545	625	1.15	9.0	14.0	22.0		
10	0.619	545	635	1.17	9.5	14.5	22.0		
10	0.621	550	640	1.16	10.0	15.0	21.5		
10	0.614	545	635	1.17	9.5	14.5	22.0		

1.02

0.67

10	0.615	545	635	1.17	9.5	14.5	22.0	1.05	0.82
10	0.619	540	630	1.17	9.0	14.0	22.5		
10	0.620	550	640	1.16	10.0	15.0	21.0		
10	0.615	550	640	1.16	10.0	15.0	21.5		
10	0.616	550	645	1.17	10.0	15.0	21.5		
10	0.614	555	650	1.17	10.0	15.0	21.0		
10	0.615	555	650	1.17	10.0	15.0	21.0		
10	0.614	550	640	1.16	10.0	15.0	21.5		
10	0.616	550	645	1.17	10.0	15.0	21.5		
10	0.614	550	640	1.16	10.0	15.0	21.5		
10	0.613	550	640	1.16	10.0	15.0	21.5		
10	0.615	545	630	1.16	9.0	14.0	22.0		
10	0.617	550	640	1.16	10.0	15.0	21.5		
10	0.619	550	640	1.16	10.0	15.0	21.5		
10	0.620	545	635	1.17	9.5	14.5	22.0		
10	0.614	540	625	1.16	9.0	14.0	22.5		
10	0.616	540	625	1.16	9.0	14.0	22.5		
10	0.618	535	620	1.16	8.5	13.5	22.5		
10	0.617	550	640	1.16	10.0	15.0	21.5		
10	0.619	535	615	1.15	8.5	13.5	22.5		
10	0.617	540	625	1.16	9.0	14.0	22.5		
10	0.618	540	630	1.17	9.0	14.0	22.5		
10	0.619	540	625	1.16	9.0	14.0	22.5		
10	0.618	535	625	1.17	9.0	14.0	22.5		
10	0.617	540	625	1.16	9.0	14.0	22.5		
10	0.616	535	615	1.15	8.5	13.5	22.5		
10	0.614	540	625	1.16	9.0	14.0	22.5		
10	0.618	550	640	1.16	10.0	15.0	21.5		
10	0.618	545	635	1.17	9.5	14.5	22.0		
10	0.617	540	630	1.17	9.0	14.0	22.5		
10	0.616	550	640	1.16	10.0	15.0	21.5		
10	0.614	550	635	1.15	9.5	14.5	21.5		
10	0.615	550	640	1.16	10.0	15.0	21.5		
10	0.615	545	630	1.16	9.0	14.0	22.0		
10	0.615	555	645	1.16	10.0	15.0	21.0		
10	0.616	545	630	1.16	9.0	14.0	22.0		
10	0.618	550	640	1.16	10.0	15.0	21.5		
10	0.619	535	615	1.15	8.5	13.5	22.5		
10	0.617	550	640	1.16	10.0	15.0	21.5		
10	0.618	550	635	1.15	9.5	14.5	21.5		
10	0.618	550	640	1.16	10.0	15.0	21.5		
10	0.619	540	625	1.16	9.0	14.0	22.5		
10	0.618	550	635	1.15	9.5	14.5	21.5		
10	0.617	545	630	1.16	9.0	14.0	22.0		
10	0.617	550	635	1.15	9.5	14.5	21.5		
10	0.616	535	620	1.16	8.5	13.5	22.5		
10	0.617	545	630	1.16	9.0	14.0	22.0		
10	0.616	535	615	1.15	8.5	13.5	22.5		
10	0.618	550	640	1.16	10.0	15.0	21.5		
10	0.618	545	630	1.16	9.0	14.0	22.0		
10	0.613	545	625	1.15	9.0	14.0	22.0		
10	0.614	535	615	1.15	8.5	13.5	22.5		
10	0.618	545	630	1.16	9.0	14.0	22.0		
10	0.617	555	645	1.16	9.5	16.5	22.5		
10	0.618	560	640	1.14	9.5	16.0	22.5		
10	0.618	555	645	1.16	9.0	15.5	22.0		
10	0.618	560	645	1.15	10.0	16.0	22.5		
10	0.614	555	650	1.17	9.5	15.5	22.0		
10	0.619	540	645	1.19	9.0	14.5	21.0		
10	0.619	545	625	1.15	9.0	14.5	21.0		
10	0.616	550	630	1.15	9.5	15.5	21.5		
10	0.618	560	635	1.13	9.5	15.0	21.0		
10	0.621	550	645	1.17	9.0	14.5	21.0		
10	0.615	555	635	1.14	9.5	15.5	22.0		
10	0.617	555	635	1.14	10.0	16.0	22.5		
10	0.615	550	640	1.16	9.5	15.5	22.0		
10	0.618	555	630	1.14	9.0	15.0	21.5		
10	0.616	555	645	1.16	9.5	15.5	22.0		
10	0.615	560	650	1.16	9.0	14.5	21.5		
10	0.616	550	640	1.16	9.0	15.0	21.5		
10	0.621	565	640	1.13	8.5	14.0	21.0		
10	0.614	555	650	1.17	9.5	15.5	22.0		
10	0.612	555	645	1.16	8.0	14.0	21.0		
10	0.615	565	640	1.13	10.0	16.0	22.5		
10	0.614	555	650	1.17	10.0	16.0	22.5		
10	0.613	555	645	1.16	9.5	15.5	22.0		
10	0.613	555	645	1.16	9.5	15.5	22.0		

0.96

0.76

1.01

0.85

10	0.614	560	640	1.14	9.0	14.5	21.5	0.98	0.82
10	0.623	555	650	1.17	9.0	14.5	21.0		
10	0.617	560	640	1.14	9.0	14.5	21.5		
10	0.620	560	645	1.15	9.5	15.5	22.0		
10	0.616	555	645	1.16	9.5	15.0	21.5		
10	0.623	550	635	1.15	9.0	14.5	21.5		
10	0.616	560	645	1.15	9.5	15.5	22.0		
10	0.613	560	650	1.16	9.5	15.5	22.0		
10	0.615	560	650	1.16	9.5	15.5	22.5		
10	0.621	560	650	1.16	9.0	15.0	22.0		
10	0.615	555	645	1.16	9.0	14.5	21.5		
10	0.614	545	630	1.16	8.5	14.0	21.0		
10	0.618	555	640	1.15	8.0	14.0	21.5		
10	0.619	560	645	1.15	10.0	16.0	22.5		
10	0.615	560	650	1.16	9.5	15.5	22.0		
10	0.613	560	645	1.15	10.0	16.0	22.5		
10	0.619	555	635	1.14	9.5	16.0	22.5		
10	0.622	550	635	1.15	9.5	15.5	22.0		
10	0.618	550	635	1.15	9.5	15.5	22.0		
10	0.616	555	640	1.15	10.0	16.0	22.5		
10	0.616	550	640	1.16	8.5	14.0	21.0		
10	0.621	545	630	1.16	8.5	14.0	21.0		
10	0.622	555	640	1.15	10.0	16.0	22.5		
10	0.620	550	630	1.15	10.0	16.0	22.5		
10	0.619	560	650	1.16	9.0	15.5	22.0		
10	0.617	560	650	1.16	9.5	15.5	22.0		
10	0.618	555	640	1.15	8.5	14.0	21.0		
10	0.618	560	650	1.16	8.0	14.0	21.0		
10	0.618	555	645	1.16	8.5	14.5	21.5		
10	0.614	550	635	1.15	9.0	15.0	22.0		
10	0.619	555	640	1.15	10.0	16.5	22.5		
10	0.619	560	645	1.15	8.0	13.5	20.5		
10	0.616	530	615	1.16	8.0	13.5	20.5		
10	0.618	530	615	1.16	8.0	13.5	20.5		
10	0.621	530	615	1.16	9.5	15.5	22.0		
10	0.615	555	640	1.15	8.5	14.0	21.5		
10	0.617	550	635	1.15	8.0	14.0	21.0		
10	0.615	545	630	1.16	9.0	15.0	22.0		
10	0.618	550	630	1.15	9.0	14.5	21.5		
10	0.616	560	640	1.14	8.5	14.0	21.0		
10	0.615	560	645	1.15	9.0	15.0	22.0		
10	0.616	560	645	1.15	9.5	15.5	22.5		
10	0.621	560	650	1.16	9.0	15.0	22.0		
10	0.614	550	635	1.15	9.5	15.5	22.0		
10	0.612	555	640	1.15	9.0	14.5	21.5		
10	0.615	555	640	1.15	9.5	15.0	22.0		
10	0.614	555	650	1.17	9.0	15.0	22.0		
10	0.613	560	650	1.16	8.5	14.5	21.5		
10	0.615	555	635	1.14	8.0	14.0	21.5		
10	0.621	540	625	1.16	8.0	14.0	21.0		
10	0.617	545	625	1.15	8.5	15.0	22.0		
10	0.615	545	630	1.16	8.0	14.5	22.0		
10	0.619	540	620	1.15	9.0	14.0	21.5		
10	0.615	540	625	1.16	8.5	14.0	21.0		
10	0.613	540	620	1.15	8.0	14.0	21.0		
10	0.611	545	625	1.15	8.0	14.0	21.0		
10	0.616	545	625	1.15	8.5	14.5	21.5		
10	0.617	545	630	1.16	8.0	14.0	21.0		
10	0.614	550	635	1.15	8.5	14.5	21.5		
10	0.612	550	635	1.15	9.0	15.0	22.0		
10	0.617	550	630	1.15	9.0	15.0	22.0		
10	0.618	555	635	1.14	9.0	15.0	22.0		
10	0.618	550	635	1.15	8.5	14.0	21.0		
10	0.618	555	640	1.15	8.5	14.0	21.0		
10	0.614	550	635	1.15	9.5	15.5	22.0		
10	0.619	565	650	1.15	9.5	15.5	22.0		
10	0.619	560	645	1.15	9.5	15.5	22.0		
10	0.616	545	630	1.16	9.0	14.5	21.5		
10	0.618	560	650	1.16	9.0	15.0	22.0		
10	0.621	555	645	1.16	9.0	14.5	21.5		
10	0.615	550	630	1.15	8.5	14.0	21.0		
10	0.617	555	645	1.16	9.0	15.0	22.0		
10	0.615	555	640	1.15	9.5	15.5	22.5		
10	0.618	560	650	1.16	9.0	15.0	22.0		
10	0.616	550	635	1.15	8.5	14.5	21.5		
10	0.615	560	645	1.15	9.5	15.5	22.0		

10	0.616	550	630	1.15	8.5	14.0	21.0	1.04	0.65
10	0.621	555	635	1.14	8.0	14.0	21.5		
10	0.614	555	635	1.14	9.0	15.0	22.0		
10	0.612	535	620	1.16	9.5	16.0	22.5		
10	0.615	540	625	1.16	9.5	15.5	22.0		
10	0.614	555	640	1.15	9.0	15.0	22.0		
10	0.613	545	625	1.15	9.0	15.0	22.0		
10	0.614	540	625	1.16	8.0	14.0	21.0		
10	0.623	545	625	1.15	8.0	14.0	21.5		
10	0.617	560	650	1.16	9.5	15.0	22.5		
10	0.620	555	645	1.16	9.0	15.0	22.0		
10	0.616	545	625	1.15	8.0	14.5	21.5		
10	0.623	555	640	1.15	9.5	16.0	22.5		
10	0.616	550	630	1.15	8.5	14.0	21.5		
10	0.613	550	630	1.15	9.5	15.0	22.0		
10	0.615	550	640	1.16	9.5	15.0	22.0		
10	0.621	560	645	1.15	9.0	15.0	22.0		
10	0.615	550	630	1.15	9.5	16.0	22.5		
10	0.614	555	635	1.14	9.5	16.0	22.5		
10	0.618	560	635	1.13	9.0	14.5	21.5		
10	0.619	550	630	1.15	9.5	15.0	22.0		
10	0.615	550	630	1.15	8.5	14.0	21.5		
10	0.613	545	625	1.15	9.5	15.0	22.0		
10	0.619	560	640	1.14	9.0	15.0	21.5		
10	0.622	555	635	1.14	8.5	14.5	21.5		
10	0.618	540	625	1.16	8.5	14.5	21.5		
10	0.616	545	625	1.15	9.5	15.5	22.0		
10	0.616	550	630	1.15	9.5	15.5	22.0		
10	0.621	545	625	1.15	8.5	14.0	21.5		
10	0.622	545	625	1.15	8.5	14.5	21.5		
10	0.620	550	635	1.15	8.0	14.0	21.0		
10	0.619	545	625	1.15	8.0	14.0	21.0		
10	0.617	550	630	1.15	8.5	14.5	21.5		
10	0.618	540	620	1.15	8.0	14.0	21.0		
10	0.618	550	635	1.15	8.5	14.5	21.5		
10	0.618	550	630	1.15	9.5	15.5	22.0		
10	0.614	550	635	1.15	9.5	15.5	22.0		
10	0.619	550	630	1.15	8.5	14.5	21.5		
10	0.619	550	635	1.15	9.0	15.0	22.0		
10	0.616	550	630	1.15	9.5	15.0	22.0		
10	0.618	555	635	1.14	9.5	15.0	22.0		
10	0.611	550	630	1.15	9.5	16.0	22.5		
10	0.602	555	635	1.14	9.0	15.0	22.0		
10	0.599	560	640	1.14	9.5	15.5	22.5		
10	0.602	550	630	1.15	9.0	15.0	22.0		
10	0.604	550	635	1.15	9.5	15.5	22.0		
10	0.605	550	635	1.15	9.0	14.5	21.5		
10	0.604	550	630	1.15	9.5	15.5	22.0		
10	0.606	550	635	1.15	10.0	16.0	22.5		
10	0.616	540	625	1.16	10.0	16.0	22.5		
10	0.616	540	630	1.17	10.5	16.5	23.0		
10	0.615	545	630	1.16	9.5	15.5	22.0		
10	0.616	550	640	1.16	8.5	14.0	21.0		
10	0.618	545	640	1.17	10.0	15.5	22.5		
10	0.616	545	640	1.17	9.5	15.0	22.5		
10	0.617	550	640	1.16	9.0	14.5	21.5		
10	0.616	540	635	1.18	9.5	15.0	22.0		
10	0.618	560	650	1.16	8.5	14.0	21.0		
10	0.619	565	650	1.15	8.0	13.5	20.5		
10	0.618	555	645	1.16	9.0	14.0	21.0		
10	0.617	560	655	1.17	8.5	14.5	21.5		
10	0.617	540	635	1.18	10.0	16.5	23.0		
10	0.621	540	630	1.17	10.5	16.0	23.0		
10	0.620	555	640	1.15	9.0	14.5	21.5		
10	0.618	540	630	1.17	9.5	15.5	22.0		
10	0.616	555	650	1.17	8.5	14.0	21.0		
10	0.618	545	645	1.18	9.5	15.0	22.0		
10	0.616	555	650	1.17	8.0	13.5	20.5		
10	0.615	540	635	1.18	10.0	16.0	22.5		
10	0.619	550	630	1.15	8.5	13.5	20.5		
10	0.622	555	635	1.14	8.0	13.0	20.0		
10	0.618	540	630	1.17	9.5	15.5	22.0		
10	0.618	555	635	1.14	8.5	14.0	21.0		
10	0.621	550	635	1.15	8.5	13.5	21.0		
10	0.623	540	615	1.14	9.0	14.5	21.5		
10	0.619	555	635	1.14	8.5	13.5	21.0		

10	0.620	550	640	1.16	8.0	13.0	20.0	0.90	0.65
10	0.615	560	650	1.16	8.0	13.0	20.0		
10	0.618	550	645	1.17	8.5	14.0	20.5		
10	0.620	535	610	1.14	8.5	14.0	21.0		
10	0.618	540	620	1.15	9.5	15.5	22.0		
10	0.621	540	625	1.16	9.0	15.0	22.0		
10	0.623	540	615	1.14	8.5	13.5	21.0		
10	0.620	540	620	1.15	9.0	14.5	21.5		
10	0.621	555	640	1.15	9.5	15.0	22.0		
10	0.618	555	640	1.15	9.0	14.5	21.5		
10	0.620	550	650	1.18	8.5	13.5	20.5		
10	0.619	550	645	1.17	8.0	13.0	20.0		
10	0.617	560	645	1.15	8.5	13.5	20.5		
10	0.614	530	615	1.16	9.0	14.5	21.5		
10	0.616	555	645	1.16	8.5	14.0	21.0		
10	0.614	545	640	1.17	9.5	15.5	22.0		
10	0.613	550	640	1.16	8.5	13.5	21.0		
10	0.616	540	625	1.16	9.5	14.5	22.0		
10	0.618	525	610	1.16	8.5	14.0	21.0		
10	0.617	540	625	1.16	9.0	15.0	22.0		
10	0.616	550	630	1.15	8.5	13.5	21.0		
10	0.619	525	615	1.17	10.0	16.0	22.5		
10	0.621	545	625	1.15	8.5	13.5	21.0		
10	0.620	540	625	1.16	9.0	14.0	21.5		
10	0.618	545	625	1.15	8.5	13.5	21.0		
10	0.618	550	625	1.14	8.5	14.0	21.0		
10	0.619	530	615	1.16	8.0	13.0	20.5		
10	0.617	540	620	1.15	9.0	13.5	21.0		
10	0.615	545	630	1.16	9.0	14.5	21.5		
10	0.617	545	625	1.15	9.5	15.0	22.0		
10	0.619	545	625	1.15	9.0	14.5	21.5		
10	0.618	535	610	1.14	8.5	13.5	20.5		
10	0.616	535	615	1.15	9.0	15.0	21.5		
10	0.615	555	645	1.16	8.5	14.0	21.0		
10	0.617	540	630	1.17	10.0	16.0	22.5		
10	0.614	540	635	1.18	9.5	15.5	22.0		
10	0.613	540	635	1.18	10.5	16.5	23.0		
10	0.620	545	635	1.17	10.0	16.0	22.5		
10	0.623	535	620	1.16	9.0	14.5	21.5		
10	0.618	530	615	1.16	8.5	13.5	21.0		
10	0.616	530	620	1.17	8.5	14.0	21.0		
10	0.617	560	645	1.15	8.0	13.5	20.5		
10	0.621	540	625	1.16	9.0	14.5	21.5		
10	0.619	535	620	1.16	9.5	15.0	22.0		
10	0.618	540	630	1.17	10.0	16.0	22.5		
10	0.620	560	650	1.16	8.5	13.5	20.5		
10	0.622	545	635	1.17	10.0	16.0	22.5		
10	0.618	535	620	1.16	9.0	14.5	21.5		
10	0.616	545	635	1.17	9.5	15.0	22.0		
10	0.621	555	650	1.17	8.5	14.0	21.0		
10	0.622	560	650	1.16	8.0	13.5	20.5		
10	0.618	555	650	1.17	9.0	14.0	21.5		
10	0.616	560	655	1.17	8.0	13.5	20.5		
10	0.620	565	655	1.16	8.5	14.0	21.0		
10	0.623	560	655	1.17	8.0	13.5	20.5		
10	0.621	550	645	1.17	9.5	15.0	22.0		
10	0.620	560	655	1.17	8.5	13.5	21.0		
10	0.618	545	635	1.17	10.0	16.5	23.0		
10	0.620	550	645	1.17	9.0	14.5	21.5		
10	0.617	545	630	1.16	10.0	15.5	22.5		
10	0.615	535	625	1.17	9.5	15.0	22.0		
10	0.619	535	620	1.16	9.0	14.5	21.5		
10	0.620	530	625	1.18	10.0	16.0	22.5		
10	0.616	560	650	1.16	8.5	14.0	21.0		
10	0.615	540	630	1.17	10.5	16.5	23.0		
10	0.620	545	630	1.16	9.0	14.5	21.5		
10	0.622	550	630	1.15	9.5	15.0	22.0		
10	0.618	550	640	1.16	10.0	15.5	22.0		
10	0.616	560	645	1.15	10.0	16.0	22.5		
10	0.619	550	630	1.15	9.5	15.0	22.0		
10	0.620	555	635	1.14	10.0	16.5	22.5		
10	0.617	560	640	1.14	9.0	14.5	21.5		
10	0.616	550	630	1.15	9.5	15.0	22.0		
10	0.615	550	645	1.17	9.0	14.5	21.5		
10	0.616	545	635	1.17	10.0	15.5	22.0		
10	0.618	560	645	1.15	8.5	14.0	21.5		

10	0.615	555	650	1.17	9.0	15.0	21.5		
10	0.619	540	625	1.16	9.0	14.5	21.5		
10	0.621	545	625	1.15	9.5	15.0	22.0		
10	0.618	550	630	1.15	9.5	14.5	22.0		
10	0.617	545	630	1.16	9.0	14.0	21.5		
10	0.619	535	630	1.18	8.5	15.0	21.5		
10	0.622	550	635	1.15	8.0	13.5	21.0		
10	0.621	545	630	1.16	8.5	14.0	21.0		
10	0.620	550	635	1.15	9.0	14.5	21.5		
10	0.615	540	620	1.15	8.5	14.0	21.0		
10	0.614	550	635	1.15	9.0	15.0	21.5		
10	0.613	550	635	1.15	9.5	15.5	22.0		
10	0.612	545	630	1.16	9.5	14.5	22.0		
10	0.615	540	635	1.18	9.0	14.0	21.5		
10	0.617	550	635	1.15	10.0	15.5	22.0		
10	0.615	545	630	1.16	9.5	15.0	22.0		
10	0.614	540	635	1.18	9.0	14.5	22.0		
10	0.618	535	630	1.18	10.5	16.0	22.5		
10	0.621	555	635	1.14	9.5	15.0	22.0		
10	0.617	560	645	1.15	10.0	16.0	22.5		
10	0.616	550	635	1.15	9.5	15.5	22.0		
10	0.618	550	635	1.15	9.0	15.0	22.0		
10	0.621	545	630	1.16	9.0	14.0	21.5	0.90	0.65
10	0.618	540	635	1.18	9.5	15.0	22.0		
10	0.619	535	620	1.16	10.0	16.0	22.5		
10	0.619	545	635	1.17	10.0	16.0	22.5		
10	0.624	560	650	1.16	9.0	14.5	21.5		
10	0.619	540	620	1.15	9.5	15.0	22.0		
10	0.620	545	635	1.17	10.5	16.5	23.0		
10	0.620	540	625	1.16	10.0	16.0	23.0		
10	0.625	555	640	1.15	9.0	14.5	21.5		
10	0.622	535	630	1.18	9.5	16.0	22.5		
10	0.621	530	615	1.16	8.5	13.5	21.0		
10	0.616	540	620	1.15	9.0	14.0	21.5		
10	0.621	540	635	1.18	8.5	13.5	20.5		
10	0.618	530	610	1.15	9.5	15.0	22.0		
10	0.616	540	625	1.16	9.0	14.0	21.5		
10	0.619	560	655	1.17	10.5	15.5	20.0		
10	0.618	560	645	1.15	10.0	15.0	20.5		
10	0.617	560	660	1.18	10.5	15.5	20.5		
10	0.616	555	645	1.16	10.0	15.0	21.0		
10	0.619	560	650	1.16	10.0	15.0	20.5		
10	0.620	560	655	1.17	10.5	15.5	20.5		
10	0.618	560	655	1.17	10.5	15.5	20.5		
10	0.619	555	650	1.17	10.0	15.0	21.0		
10	0.620	560	655	1.17	10.5	15.5	20.5		
10	0.614	555	645	1.16	10.0	15.0	21.0		
10	0.614	555	640	1.15	10.0	15.0	21.0		
10	0.613	550	640	1.16	10.0	15.0	21.5		
10	0.615	555	650	1.17	10.0	15.0	21.0		
10	0.616	555	645	1.16	10.0	15.0	21.0		
10	0.614	560	655	1.17	10.5	15.5	20.5		
10	0.613	560	650	1.16	10.0	15.0	20.5		
10	0.617	560	655	1.17	10.5	15.5	20.5		
10	0.619	555	645	1.16	10.0	15.0	21.0		
10	0.616	560	655	1.17	10.5	15.5	20.5		
10	0.615	555	645	1.16	10.0	15.0	21.0		
10	0.619	555	640	1.15	10.0	15.0	21.0		
10	0.617	555	645	1.16	10.0	15.0	21.0	0.85	0.75
10	0.617	555	645	1.16	10.0	15.0	21.0		
10	0.614	555	650	1.17	10.0	15.0	21.0		
10	0.621	545	630	1.16	9.0	14.0	22.0		
10	0.620	555	645	1.16	10.0	15.0	21.5		
10	0.619	545	640	1.17	10.0	15.0	22.0		
10	0.617	535	615	1.15	8.5	13.5	22.5		
10	0.612	540	615	1.14	8.5	13.5	22.5		
10	0.613	535	620	1.16	8.5	13.5	22.5		
10	0.615	560	655	1.17	10.0	15.0	20.5		
10	0.620	545	635	1.17	9.5	14.5	22.0		
10	0.614	535	625	1.17	9.0	14.0	22.5		
10	0.616	535	630	1.18	9.0	14.0	22.5		
10	0.615	535	620	1.16	8.5	13.5	22.5		
10	0.616	555	650	1.17	10.0	15.0	21.0		
10	0.617	555	645	1.16	10.0	15.0	21.0		
10	0.615	560	655	1.17	10.5	15.5	20.5		
10	0.619	540	630	1.17	9.0	14.0	22.5		

10	0.615	545	640	1.17	10.0	15.0	22.0	1.02	0.65
10	0.615	550	645	1.17	10.0	15.0	21.5		
10	0.614	550	640	1.16	10.0	15.0	21.5		
10	0.615	560	650	1.16	10.0	15.0	20.5		
10	0.618	535	620	1.16	8.5	13.5	22.5		
10	0.618	540	630	1.17	9.0	14.0	22.5		
10	0.616	540	630	1.17	9.0	14.0	22.5		
10	0.614	550	640	1.16	10.0	15.0	21.5		
10	0.617	540	630	1.17	9.0	14.0	22.5		
10	0.618	540	625	1.16	9.0	14.0	22.5		
10	0.616	555	640	1.15	10.0	15.0	21.0		
10	0.615	535	615	1.15	8.5	13.5	22.5		
10	0.620	540	625	1.16	9.0	14.0	22.5		
10	0.619	535	625	1.17	9.0	14.0	22.5		
10	0.620	560	650	1.16	10.0	15.0	20.5		
10	0.617	535	615	1.15	8.5	13.5	22.5		
10	0.616	545	640	1.17	10.0	15.0	22.0		
10	0.616	545	630	1.16	9.0	14.0	22.0		
10	0.618	545	630	1.16	9.0	14.0	22.0		
10	0.615	535	615	1.15	8.5	13.5	22.5		
10	0.616	545	630	1.16	9.0	14.0	22.0		
10	0.617	555	650	1.17	10.0	15.0	21.5		
10	0.620	545	635	1.17	9.5	14.5	22.0		
10	0.618	550	645	1.17	10.0	15.0	21.5		
10	0.616	555	645	1.16	10.0	15.0	21.0		
10	0.617	535	610	1.14	8.5	13.5	22.5		
10	0.619	545	635	1.17	9.5	14.5	22.0		
10	0.615	535	615	1.15	8.5	13.5	22.5		
10	0.614	540	625	1.16	9.0	14.0	22.5		
10	0.620	535	620	1.16	8.5	13.5	22.5		
10	0.618	545	635	1.17	9.5	14.5	22.0		
10	0.615	555	650	1.17	10.0	15.0	21.0		
10	0.614	545	640	1.17	10.0	15.0	22.0		
10	0.621	550	640	1.16	10.0	15.0	21.5		
10	0.623	560	655	1.17	10.5	15.5	20.5		
10	0.618	545	640	1.17	10.0	15.0	22.0		
10	0.617	540	630	1.17	9.0	14.0	22.5		
10	0.616	540	625	1.16	9.0	14.0	22.5		
10	0.619	560	645	1.15	10.0	15.0	20.5		
10	0.615	555	650	1.17	10.0	15.0	21.0		
10	0.616	550	645	1.17	10.0	15.0	21.5		
10	0.618	560	655	1.17	10.5	15.5	20.5		
10	0.616	555	650	1.17	10.0	15.0	21.0		
10	0.615	560	650	1.16	10.0	15.0	20.5		
10	0.613	555	640	1.15	10.0	15.0	21.0		
10	0.620	550	640	1.16	10.0	15.0	21.5		
10	0.621	555	645	1.16	10.0	15.0	21.0		
10	0.618	560	645	1.15	10.0	15.0	20.5		
10	0.616	545	630	1.16	9.0	14.0	22.0		
10	0.615	545	635	1.17	9.5	14.5	22.0		
10	0.615	560	655	1.17	10.5	15.5	21.0		
10	0.614	535	610	1.14	8.5	13.5	22.5		
10	0.614	540	625	1.16	9.0	14.0	22.5		
10	0.617	560	645	1.15	10.0	15.0	20.5		
10	0.618	555	645	1.16	10.0	15.0	21.0		
10	0.615	545	630	1.16	9.0	14.0	22.0		
10	0.613	540	630	1.17	9.0	14.0	22.5		
10	0.618	555	645	1.16	10.0	15.0	21.0		
10	0.619	535	615	1.15	8.5	13.5	22.5		
10	0.617	540	625	1.16	9.0	14.0	22.5		
10	0.615	545	630	1.16	9.0	14.0	22.0		
10	0.620	550	630	1.15	9.0	14.0	21.5		
10	0.622	535	615	1.15	8.5	13.5	22.5		
10	0.619	540	625	1.16	9.0	14.0	22.0		
10	0.617	545	630	1.16	9.0	14.0	22.0		
10	0.617	545	625	1.15	9.0	14.0	22.0		
10	0.621	545	635	1.17	9.5	14.5	22.0		
10	0.616	535	615	1.15	8.5	13.5	22.5		
10	0.615	535	615	1.15	8.5	13.5	22.5		
10	0.622	555	645	1.16	10.0	15.0	21.0		
10	0.620	540	630	1.17	9.0	14.0	22.5		
10	0.617	540	625	1.16	9.0	14.0	22.5		
10	0.615	540	630	1.17	9.0	14.0	22.5		
10	0.618	545	635	1.17	9.5	14.5	22.0		
10	0.619	550	640	1.16	10.0	15.0	21.5		
10	0.617	545	635	1.17	9.5	14.5	22.0		

10	0.616	540	630	1.17	9.0	14.0	22.5
10	0.620	550	645	1.17	10.0	15.0	21.5
10	0.619	555	650	1.17	10.0	15.0	21.0
10	0.617	540	630	1.17	9.0	14.0	22.5
10	0.618	545	635	1.17	9.5	14.5	22.0
10	0.619	545	630	1.16	9.0	14.0	22.0
10	0.621	550	635	1.15	9.5	14.5	21.5
10	0.617	550	640	1.16	10.0	15.0	21.5
10	0.618	555	645	1.16	10.0	15.0	21.0
10	0.617	545	630	1.16	9.0	14.0	22.0
10	0.618	545	635	1.17	9.5	14.5	22.0
10	0.619	540	630	1.17	9.0	14.0	22.5
10	0.617	535	620	1.16	8.5	13.5	22.5
10	0.616	545	635	1.17	9.5	14.5	22.0
10	0.618	540	630	1.17	9.0	14.0	22.5
10	0.617	555	645	1.16	10.0	15.0	21.0
10	0.618	550	640	1.16	10.0	15.0	21.5
10	0.617	555	650	1.17	10.0	15.0	21.0
10	0.618	550	640	1.16	10.0	15.0	21.5
10	0.619	550	635	1.15	9.5	14.5	21.5
10	0.617	545	635	1.17	9.5	14.5	22.0
10	0.616	545	630	1.16	9.0	14.0	22.0
10	0.618	545	630	1.16	9.0	14.0	22.0
10	0.617	550	640	1.16	10.0	15.0	21.5
10	0.618	545	635	1.17	9.5	14.5	22.0
10	0.619	540	630	1.17	9.0	14.0	22.5
10	0.622	550	640	1.16	10.0	15.0	21.5
10	0.618	545	635	1.17	9.5	14.5	22.0
10	0.617	540	630	1.17	9.0	14.0	22.5
10	0.618	545	630	1.16	9.5	15.5	22.0
10	0.619	560	650	1.16	10.5	16.5	23.0
10	0.616	550	635	1.15	10.0	16.0	22.5
10	0.619	555	640	1.15	10.0	15.5	22.0
10	0.615	550	635	1.15	10.0	16.0	22.0
10	0.617	550	635	1.15	9.5	15.0	21.5
10	0.616	555	645	1.16	10.5	16.0	22.5
10	0.615	555	645	1.16	10.0	16.0	22.0
10	0.616	550	640	1.16	9.5	15.0	21.5
10	0.621	550	640	1.16	9.5	15.5	22.0
10	0.614	550	640	1.16	10.0	16.0	22.5
10	0.617	550	640	1.16	9.5	15.0	22.0
10	0.619	550	640	1.16	10.0	16.0	22.5
10	0.622	550	635	1.15	10.0	16.0	22.5
10	0.617	560	645	1.15	10.5	16.5	23.0
10	0.618	560	650	1.16	10.0	16.0	22.5
10	0.621	555	640	1.15	9.5	15.5	22.0
10	0.623	555	640	1.15	10.5	16.5	23.0
10	0.618	550	635	1.15	10.0	16.0	22.5
10	0.620	555	635	1.14	10.0	16.0	22.5
10	0.623	545	630	1.16	9.5	15.5	22.0
10	0.617	550	640	1.16	9.5	15.5	22.0
10	0.616	535	625	1.17	9.0	15.0	21.5
10	0.615	545	630	1.16	10.0	16.0	22.0
10	0.621	555	640	1.15	10.5	16.5	22.5
10	0.614	550	635	1.15	10.5	16.5	22.5
10	0.618	550	635	1.15	11.0	16.5	23.0
10	0.616	560	645	1.15	10.0	16.0	22.5
10	0.619	550	640	1.16	10.0	16.0	22.5
10	0.619	550	640	1.16	9.5	15.5	22.0
10	0.616	555	640	1.15	9.5	16.0	22.5
10	0.615	555	650	1.17	10.5	16.5	22.5
10	0.620	565	650	1.15	10.0	16.5	23.0
10	0.618	555	640	1.15	9.5	15.5	22.0
10	0.615	560	645	1.15	10.0	16.0	22.5
10	0.613	560	650	1.16	10.0	16.0	22.5
10	0.617	560	645	1.15	9.5	15.0	22.0
10	0.621	535	625	1.17	9.0	14.5	21.0
10	0.618	530	620	1.17	9.0	14.5	21.0
10	0.616	545	630	1.16	9.5	15.5	22.0
10	0.619	560	650	1.16	10.0	16.5	23.0
10	0.622	550	635	1.15	10.0	16.0	22.0
10	0.618	535	620	1.16	9.0	14.5	21.0
10	0.617	550	635	1.15	9.0	15.0	22.0
10	0.621	555	640	1.15	9.0	14.0	21.0
10	0.623	560	650	1.16	9.5	15.5	22.5
10	0.622	555	640	1.15	10.0	16.0	22.5

0.95

0.70

0.85

0.72

10	0.621	560	645	1.15	9.5	16.0	22.5
10	0.618	560	645	1.15	10.0	16.5	23.0
10	0.619	550	630	1.15	9.0	15.0	22.0
10	0.616	550	645	1.17	9.0	15.0	22.0
10	0.619	555	640	1.15	9.5	15.5	22.5
10	0.615	550	635	1.15	9.5	15.5	22.0
10	0.617	555	645	1.16	9.0	15.5	22.0
10	0.616	550	630	1.15	9.0	15.0	22.0
10	0.615	540	625	1.16	8.5	14.0	21.0
10	0.616	530	620	1.17	9.0	14.5	21.0
10	0.621	530	625	1.18	9.0	14.5	21.0
10	0.614	560	645	1.15	9.0	15.0	22.0
10	0.617	545	630	1.16	9.0	14.5	21.0
10	0.619	540	625	1.16	8.5	14.5	21.5
10	0.622	540	625	1.16	8.0	14.0	21.0
10	0.617	560	650	1.16	9.5	16.0	22.5
10	0.618	550	635	1.15	9.0	15.5	22.0
10	0.621	560	650	1.16	10.0	16.0	22.5
10	0.623	545	630	1.16	9.5	15.5	22.0
10	0.618	535	625	1.17	9.0	14.5	21.0
10	0.620	545	630	1.16	9.0	15.5	22.0
10	0.619	560	650	1.16	10.5	16.5	23.0
10	0.617	535	625	1.17	9.0	14.5	21.0
10	0.615	545	630	1.16	8.5	14.0	21.0
10	0.612	535	615	1.15	8.5	14.0	20.5
10	0.621	545	625	1.15	9.0	14.5	21.0
10	0.614	550	630	1.15	9.0	15.0	22.0
10	0.618	535	620	1.16	8.5	14.0	21.0
10	0.616	550	630	1.15	9.5	15.5	22.0
10	0.619	540	625	1.16	9.0	14.5	21.0
10	0.619	550	635	1.15	9.5	16.0	22.5
10	0.616	545	625	1.15	8.5	14.0	21.0
10	0.615	550	630	1.15	9.0	14.5	21.5
10	0.620	560	645	1.15	9.5	15.5	22.5
10	0.618	555	645	1.16	10.0	16.0	22.5
10	0.615	550	635	1.15	9.5	15.5	22.0
10	0.613	555	645	1.16	9.5	15.5	22.0
10	0.617	535	620	1.16	9.0	14.5	21.0
10	0.621	540	625	1.16	8.5	14.0	21.0
10	0.618	530	620	1.17	8.5	14.0	21.0
10	0.616	525	610	1.16	8.5	14.0	20.5
10	0.619	550	640	1.16	10.0	16.0	22.5
10	0.622	550	635	1.15	9.5	15.5	22.0
10	0.618	550	635	1.15	10.0	16.0	22.5
10	0.617	555	640	1.15	9.5	15.5	22.0
10	0.621	550	635	1.15	10.5	16.0	22.5
10	0.617	545	625	1.15	9.5	15.0	21.5
10	0.615	555	645	1.16	10.0	15.5	22.5
10	0.614	555	645	1.16	9.5	15.5	22.0
10	0.619	550	640	1.16	9.0	15.0	22.0
10	0.622	550	640	1.16	9.5	15.5	22.0
10	0.619	545	630	1.16	9.5	15.0	21.5
10	0.616	550	635	1.15	10.0	15.5	22.0
10	0.621	555	640	1.15	10.0	15.5	22.0
10	0.614	560	635	1.13	10.0	15.5	22.0
10	0.618	545	630	1.16	10.5	16.0	22.5
10	0.616	560	650	1.16	10.5	16.0	22.0
10	0.619	560	640	1.14	11.0	16.5	22.5
10	0.619	560	640	1.14	9.5	15.0	21.5
10	0.616	555	635	1.14	10.0	15.5	22.0
10	0.615	550	630	1.15	10.0	15.5	22.0
10	0.620	550	630	1.15	9.0	14.5	21.0
10	0.618	555	640	1.15	9.5	15.5	22.0
10	0.615	535	625	1.17	9.0	15.0	21.5
10	0.613	540	625	1.16	9.0	15.0	21.5
10	0.617	550	630	1.15	9.5	15.5	22.0
10	0.621	550	635	1.15	9.5	15.5	22.0
10	0.617	540	625	1.16	9.0	15.0	21.5
10	0.616	550	635	1.15	9.5	15.5	22.0
10	0.618	550	630	1.15	9.5	15.5	22.0
10	0.619	555	635	1.14	9.0	15.0	21.5
10	0.615	550	630	1.15	9.5	15.5	22.0
10	0.617	550	635	1.15	9.5	15.5	22.0
10	0.623	560	650	1.16	11.0	16.5	22.5
10	0.617	555	640	1.15	10.0	15.5	22.0
10	0.617	550	635	1.15	9.5	15.5	22.0

0.88

0.68

0.82

0.70

10	0.616	545	630	1.16	9.0	15.0	21.5	1.03	0.58
10	0.621	545	625	1.15	8.5	14.5	21.0		
10	0.620	535	620	1.16	9.0	15.0	21.5		
10	0.618	540	625	1.16	9.5	15.5	22.0		
10	0.618	550	630	1.15	9.5	15.5	22.0		
10	0.622	545	625	1.15	8.5	14.5	21.0		
10	0.619	535	620	1.16	8.0	14.0	21.0		
10	0.616	545	625	1.15	8.5	14.5	21.5		
10	0.619	525	615	1.17	8.0	14.0	21.0		
10	0.617	535	620	1.16	8.0	14.0	21.0		
10	0.621	540	620	1.15	8.5	14.5	21.0		
10	0.622	545	625	1.15	9.0	15.0	21.5		
10	0.621	545	630	1.16	9.0	15.0	21.5		
10	0.620	530	620	1.17	9.0	14.5	21.0		
10	0.623	540	620	1.15	9.0	15.0	21.5		
10	0.620	530	615	1.16	8.5	14.0	20.5		
10	0.619	530	615	1.16	8.5	14.0	20.5		
10	0.621	550	630	1.15	9.5	15.5	22.0		
10	0.626	545	630	1.16	9.5	15.5	22.0		
10	0.622	530	620	1.17	8.5	14.0	21.0		
10	0.621	545	625	1.15	8.5	14.5	21.5		
10	0.624	550	635	1.15	9.0	15.0	22.0		
10	0.622	550	635	1.15	9.0	15.0	22.0		
10	0.620	555	640	1.15	9.0	14.5	21.5		
10	0.620	550	635	1.15	9.5	15.5	22.0		
10	0.621	555	635	1.14	9.5	15.5	22.5		
10	0.619	560	650	1.16	10.5	16.5	23.0		
10	0.617	555	645	1.16	10.0	16.0	22.5		
10	0.616	550	640	1.16	10.0	15.5	22.0		
10	0.615	545	645	1.18	9.5	15.5	22.0		
10	0.612	555	650	1.17	8.5	14.0	21.0		
10	0.611	560	650	1.16	9.0	14.5	21.5		
10	0.608	555	650	1.17	8.5	13.5	21.0		
10	0.615	550	640	1.16	9.5	15.0	22.0		
10	0.612	560	655	1.17	8.5	14.0	21.0		
10	0.615	560	650	1.16	9.0	14.5	21.5		
10	0.614	550	645	1.17	10.0	15.5	22.5		
10	0.621	550	645	1.17	10.5	16.5	23.0		
10	0.620	555	650	1.17	9.0	14.5	21.5		
10	0.616	560	650	1.16	8.5	13.5	21.0		
10	0.615	550	645	1.17	9.5	15.0	22.0		
10	0.616	560	640	1.14	9.0	14.5	21.5		
10	0.620	560	650	1.16	8.0	13.5	20.5		
10	0.615	550	640	1.16	9.0	14.5	21.5		
10	0.613	555	645	1.16	9.5	15.0	22.0		
10	0.617	550	650	1.18	10.0	16.0	22.5		
10	0.616	540	635	1.18	9.5	15.0	22.0		
10	0.614	560	655	1.17	8.5	14.0	21.0		
10	0.612	545	640	1.17	9.0	14.5	21.5		
10	0.620	540	625	1.16	10.0	16.5	23.0		
10	0.617	530	610	1.15	8.5	13.5	20.5		
10	0.618	540	630	1.17	10.5	16.0	23.0		
10	0.616	535	625	1.17	9.5	15.0	22.0		
10	0.621	555	645	1.16	10.0	16.5	23.0		
10	0.620	545	640	1.17	9.0	14.0	21.5		
10	0.615	550	645	1.17	8.5	13.5	21.0		
10	0.613	550	645	1.17	9.0	14.0	21.5		
10	0.617	555	655	1.18	9.0	14.5	21.5		
10	0.618	560	660	1.18	9.5	15.0	22.0		
10	0.620	540	635	1.18	8.5	13.5	21.0		
10	0.618	545	640	1.17	10.5	16.0	23.0		
10	0.620	550	650	1.18	9.5	14.5	22.0		
10	0.618	550	650	1.18	8.5	13.5	21.0		
10	0.617	560	665	1.19	8.5	14.0	21.0		
10	0.615	530	640	1.21	8.5	13.5	21.0		
10	0.618	540	645	1.19	10.0	16.0	22.5		
10	0.619	540	630	1.17	9.5	15.5	22.0		
10	0.617	550	655	1.19	8.5	13.5	21.0		
10	0.615	540	635	1.18	9.0	14.5	22.0		
10	0.618	540	640	1.19	10.0	16.5	23.0		
10	0.617	555	660	1.19	8.5	13.5	21.0		
10	0.616	530	625	1.18	9.0	14.0	21.0		
10	0.613	540	625	1.16	10.5	16.5	23.0		
10	0.615	535	625	1.17	8.5	14.0	21.0		
10	0.617	560	665	1.19	8.5	13.5	21.0		
10	0.618	535	625	1.17	9.0	14.0	21.0		

0.90

0.60

10	0.616	545	640	1.17	10.0	16.5	23.0	0.96	0.72		
10	0.618	540	645	1.19	10.0	16.0	22.5				
10	0.617	545	635	1.17	9.5	15.0	22.0				
10	0.616	535	625	1.17	9.5	15.5	22.0				
10	0.619	545	625	1.15	9.5	15.0	22.0				
10	0.620	555	650	1.17	9.0	14.5	21.5				
10	0.619	545	635	1.17	8.5	13.5	21.0				
10	0.617	550	645	1.17	10.0	16.5	23.0				
10	0.615	555	655	1.18	8.5	14.0	21.0				
10	0.616	535	630	1.18	9.5	15.0	22.0				
10	0.613	545	635	1.17	8.5	13.5	21.0				
10	0.618	530	625	1.18	10.0	16.5	23.0				
10	0.617	540	635	1.18	8.5	13.0	20.0				
10	0.619	530	625	1.18	8.5	13.5	21.0				
10	0.615	545	635	1.17	9.0	14.5	21.5				
10	0.621	555	650	1.17	8.5	13.5	21.0				
10	0.615	545	640	1.17	9.5	14.0	21.0				
10	0.616	550	650	1.18	9.0	15.0	22.0				
10	0.617	560	665	1.19	8.5	13.0	20.0				
10	0.618	545	640	1.17	8.0	13.5	21.0				
10	0.619	540	625	1.16	8.0	13.0	20.0				
10	0.615	540	635	1.18	10.0	16.0	22.5				
10	0.614	565	660	1.17	8.0	13.0	20.0				
10	0.613	555	645	1.16	8.5	14.0	21.0				
10	0.615	550	650	1.18	10.0	16.0	22.5				
10	0.618	550	640	1.16	9.0	14.5	21.5				
10	0.621	545	640	1.17	9.5	15.0	22.0				
10	0.617	535	625	1.17	10.0	16.0	22.5				
10	0.615	540	620	1.15	8.5	13.5	20.5				
										0.98	0.65