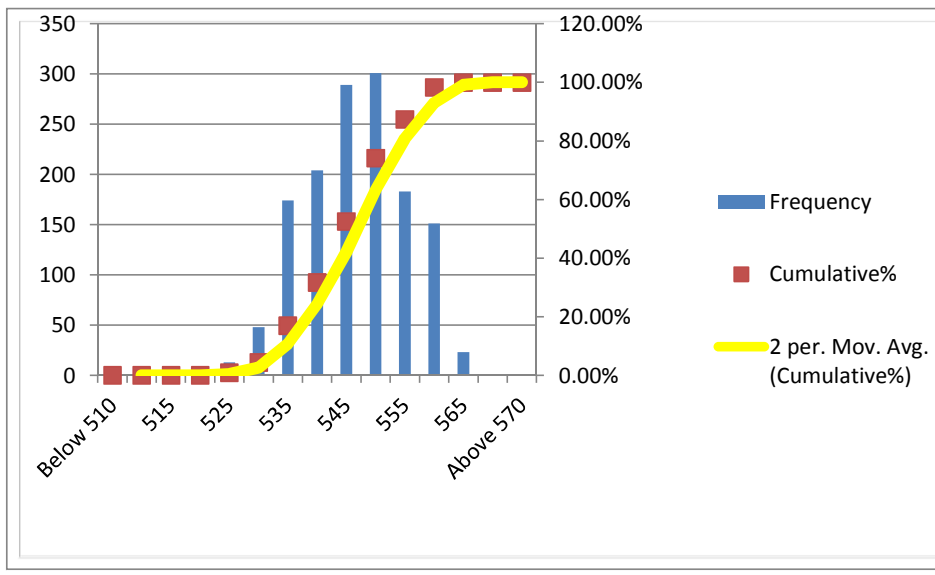


Campaign Length: 10.05.16 to 16.05.16
 Total Production: 14410.26 MT
 Billet Rolled: SAL-243, SML-235,
 Product: Xtreme 500W (2x16 mm)

YIELD STRENGTH	
Mean	546.674
Median	545
Mode	550
Std. Dev.	8.649
Min	525
Max	565
Count	1386

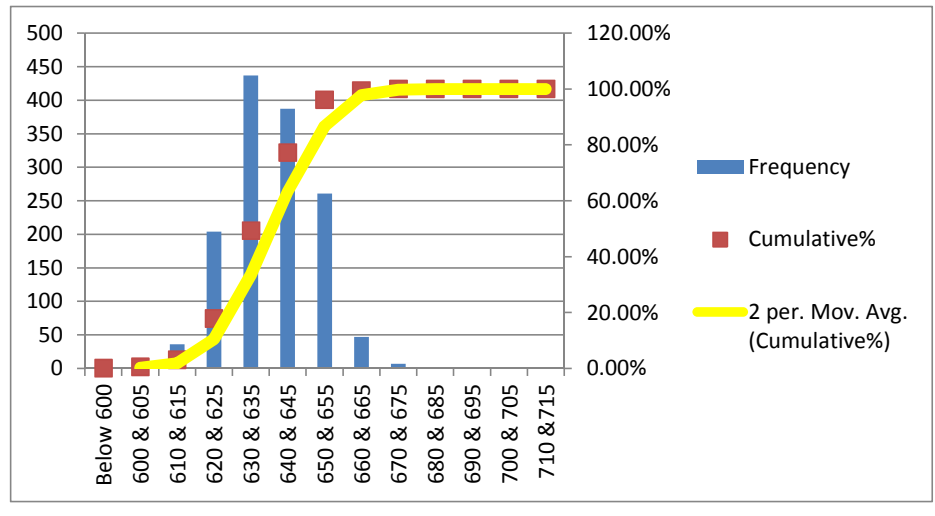
Bin	Frequency	%	Cumulative%
Below 510	0	0.00%	0.00%
510	0	0.00%	0.00%
515	0	0.00%	0.00%
520	0	0.00%	0.00%
525	13	0.94%	0.94%
530	48	3.46%	4.40%
535	174	12.55%	16.96%
540	204	14.72%	31.67%
545	289	20.85%	52.53%
550	301	21.72%	74.24%
555	183	13.20%	87.45%
560	151	10.89%	98.34%
565	23	1.66%	100.00%
570	0	0.00%	100.00%
Above 570	0	0.00%	100.00%
Total	1386		



MINIMUM REQUIREMENTS
 As per ISO 6935-2: 500 Mpa
 As per ASTM A-615: 420 Mpa

ULTIMATE STRENGTH	
Mean	638.138
Median	640
Mode	635
Std. Dev.	11.54
Min	595
Max	675
Count	1386

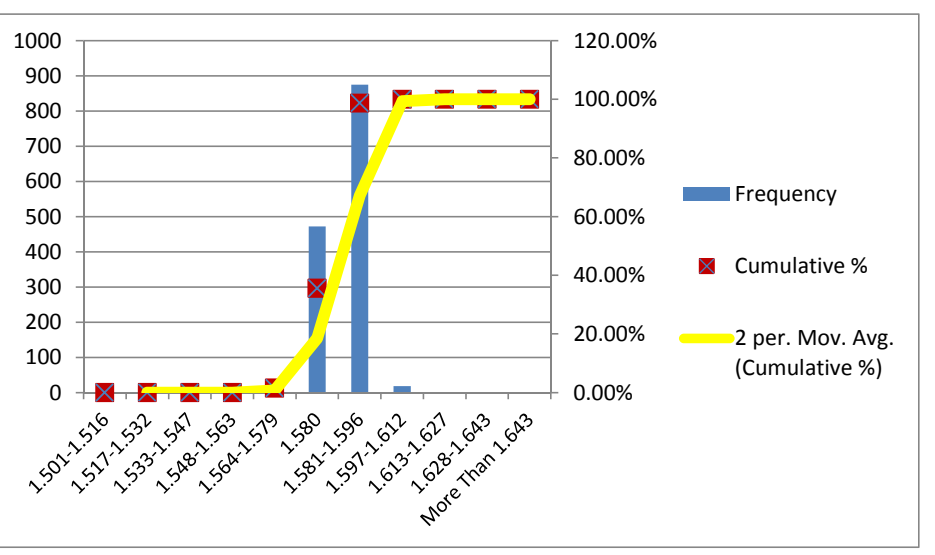
Bin	Frequency	%	Cumulative%
Below 600	1	0.07%	0.07%
600 & 605	6	0.43%	0.51%
610 & 615	36	2.60%	3.10%
620 & 625	204	14.72%	17.82%
630 & 635	437	31.53%	49.35%
640 & 645	387	27.92%	77.27%
650 & 655	261	18.83%	96.10%
660 & 665	47	3.39%	99.49%
670 & 675	7	0.51%	100.00%
680 & 685	0	0.00%	100.00%
690 & 695	0	0.00%	100.00%
700 & 705	0	0.00%	100.00%
710 & 715	0	0.00%	100.00%
720 & 725	0	0.00%	100.00%
730 & 735	0	0.00%	100.00%
Above 735	0	0.00%	100.00%
Total	1386		



MINIMUM REQUIREMENTS
 As per ISO 6935-2: 575 Mpa
 As per ASTM A-615: 620 Mpa

UNIT WEIGHT	
Mean	1.582
Median	1.583
Mode	1.584
Std. Dev.	0.007
Min	1.551
Max	1.603
Count	1386

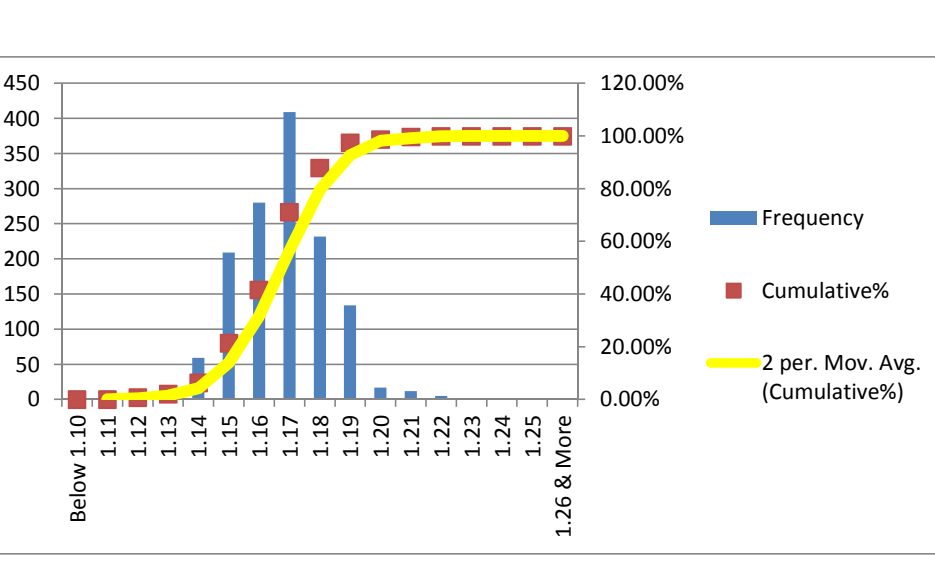
Bin	Frequency	%	Cumulative %
Less Than 1.501	0	0.00%	0.00%
1.501-1.516	0	0.00%	0.00%
1.517-1.532	0	0.00%	0.00%
1.533-1.547	0	0.00%	0.00%
1.548-1.563	0	0.00%	0.00%
1.564-1.579	21	1.52%	1.52%
1.580	472	34.05%	35.57%
1.581-1.596	875	63.13%	98.70%
1.597-1.612	18	1.30%	100.00%
1.613-1.627	0	0.00%	100.00%
1.628-1.643	0	0.00%	100.00%
More Than 1.643	0	0.00%	100.00%
Total	1386		



MINIMUM REQUIREMENTS
 As per ISO 6935-2: ± 5%
 As per ASTM A-615: -6%

T/Y RATIO	
Mean	1.167
Median	1.17
Mode	1.15
Std. Dev.	0.015
Min	1.12
Max	1.22
Count	1386

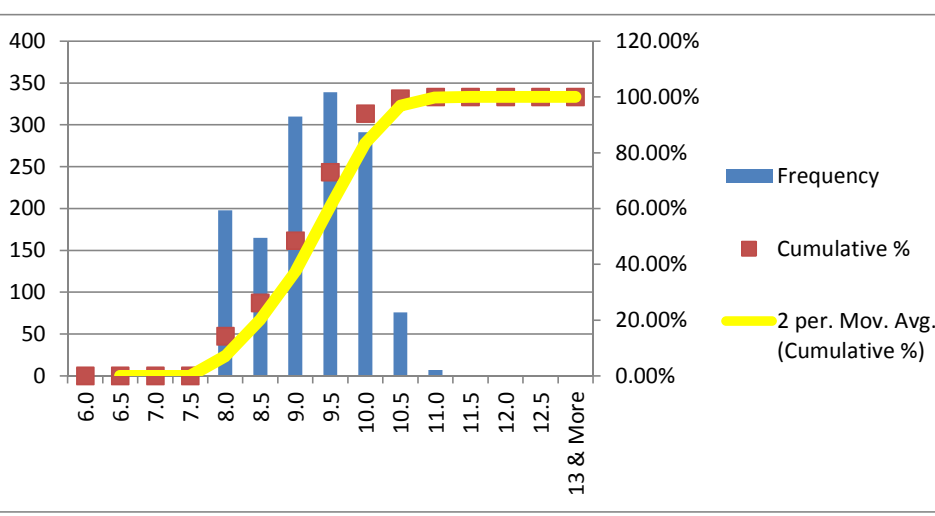
Bin	Frequency	%	Cumulative %
Below 1.10	0	0.00%	0.00%
1.11	0	0.00%	0.00%
1.12	11	0.79%	0.79%
1.13	18	1.30%	2.09%
1.14	59	4.26%	6.35%
1.15	209	15.08%	21.43%
1.16	280	20.20%	41.63%
1.17	409	29.51%	71.14%
1.18	232	16.74%	87.88%
1.19	134	9.67%	97.55%
1.20	17	1.23%	98.77%
1.21	12	0.87%	99.64%
1.22	5	0.36%	100.00%
1.23	0	0.00%	100.00%
1.24	0	0.00%	100.00%
1.25	0	0.00%	100.00%
1.26 & More	0	0.00%	100.00%
Total	1386		



MINIMUM REQUIREMENTS
 As per ISO 6935-2: T/Y: 1.15
 As per ASTM A-615: Not Required

ELN. AT MAX. FORCE (Ag)(GL-200 mm)	
Mean	9.222
Median	9.5
Mode	9.5
Std. Dev.	0.734
Min	8.0
Max	11.0
Count	1386

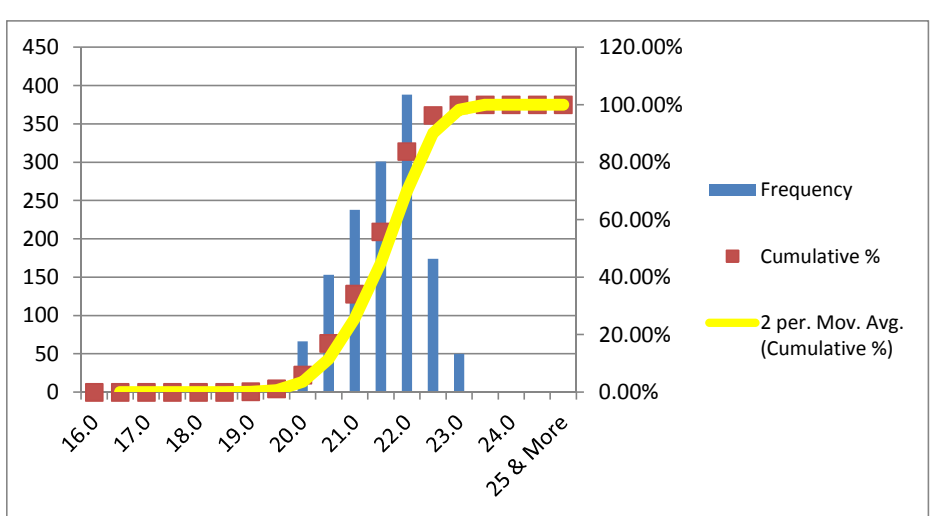
Bin	Frequency	%	Cumulative %
6.0	0	0.00%	0.00%
6.5	0	0.00%	0.00%
7.0	0	0.00%	0.00%
7.5	0	0.00%	0.00%
8.0	198	14.29%	14.29%
8.5	165	11.90%	26.19%
9.0	310	22.37%	48.56%
9.5	339	24.46%	73.02%
10.0	291	21.00%	94.01%
10.5	76	5.48%	99.49%
11.0	7	0.51%	100.00%
11.5	0	0.00%	100.00%
12.0	0	0.00%	100.00%
12.5	0	0.00%	100.00%
13 & More	0	0.00%	100.00%
Total	1386		



MINIMUM REQUIREMENTS
 As per ISO 6935-2: 7%
 As per ASTM A-615: Not Required

ELN. AFTER FRACTURE (AS)(GL-5D)	
Mean	21.528
Median	21.5
Mode	22.0
Std. Dev.	0.767
Min	19.0
Max	23.0
Count	1386

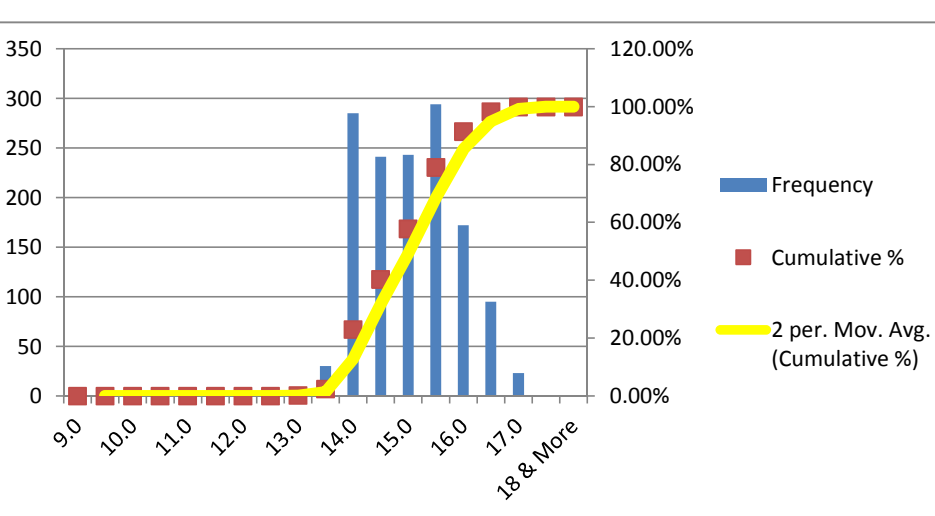
Bin	Frequency	%	Cumulative %
16.0	0	0.00%	0.00%
16.5	0	0.00%	0.00%
17.0	0	0.00%	0.00%
17.5	0	0.00%	0.00%
18.0	0	0.00%	0.00%
18.5	0	0.00%	0.00%
19.0	3	0.22%	0.22%
19.5	13	0.94%	1.15%
20.0	66	4.76%	5.92%
20.5	153	11.04%	16.96%
21.0	238	17.17%	34.13%
21.5	301	21.72%	55.84%
22.0	388	27.99%	83.84%
22.5	174	12.55%	96.39%
23.0	50	3.61%	100.00%
23.5	0	0.00%	100.00%
24.0	0	0.00%	100.00%
24.5	0	0.00%	100.00%
25 & More	0	0.00%	100.00%
Total	1386		



MINIMUM REQUIREMENTS
 As per ISO 6935-2: 14%

ELN. AFTER FRACTURE (A)(GL-203.2 mm)	
Mean	15.037
Median	15.0
Mode	15.5
Std. Dev.	0.839
Min	13.0
Max	17.0
Count	1386

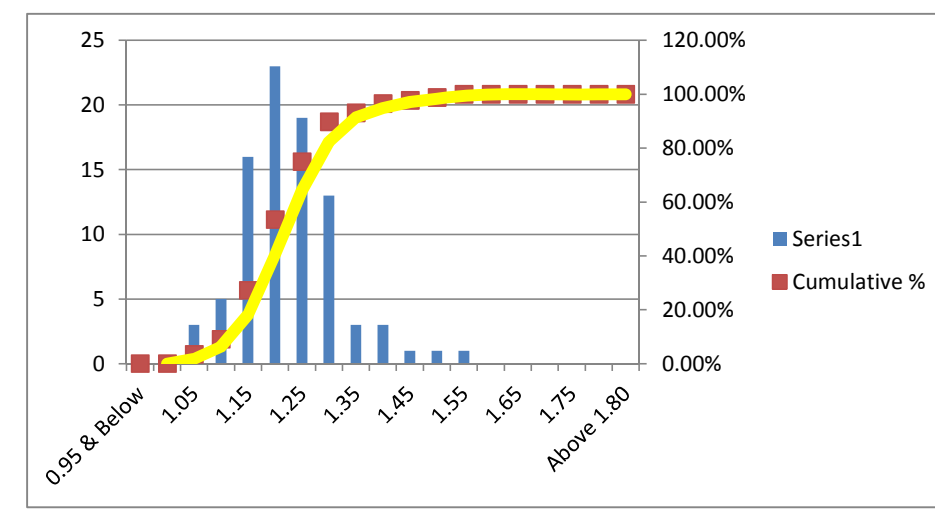
Bin	Frequency	%	Cumulative %
9.0	0	0.00%	0.00%
9.5	0	0.00%	0.00%
10.0	0	0.00%	0.00%
10.5	0	0.00%	0.00%
11.0	0	0.00%	0.00%
11.5	0	0.00%	0.00%
12.0	0	0.00%	0.00%
12.5	0	0.00%	0.00%
13.0	3	0.22%	0.22%
13.5	30	2.16%	2.38%
14.0	285	20.56%	22.94%
14.5	241	17.39%	40.33%
15.0	243	17.53%	57.86%
15.5	294	21.21%	79.08%
16.0	172	12.41%	91.49%
16.5	95	6.85%	98.34%
17.0	23	1.66%	100.00%
17.5	0	0.00%	100.00%
18 & More	0	0.00%	100.00%
Total	1386		



MINIMUM REQUIREMENTS
 As per ASTM A-615: 9%

TRANSVERSE RIB HEIGHT	
Mean	1.228
Median	1.20
Mode	1.2
Std. Dev.	0.092
Min	1.05
Max	1.55
Count	88

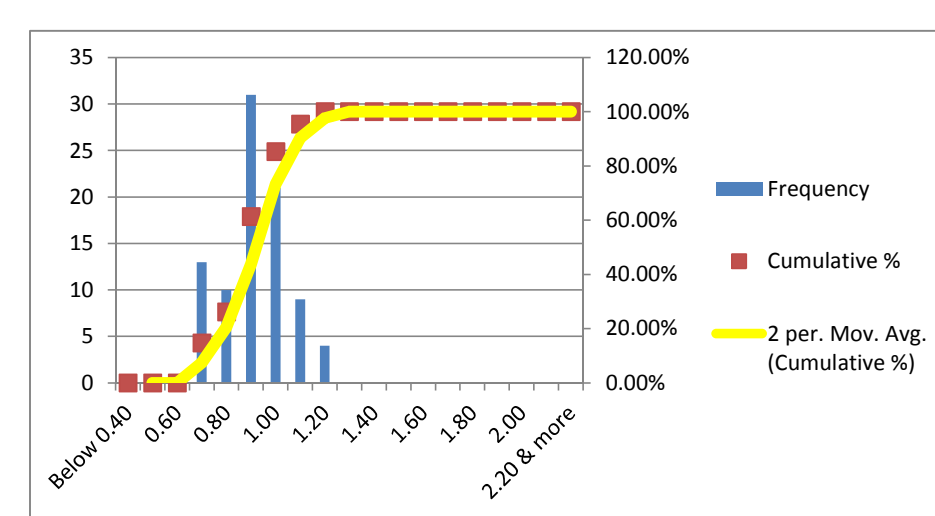
Bin	Frequency	%	Cumulative %
0.95 & Below	0	0.00%	0.00%
1.00	0	0.00%	0.00%
1.05	3	3.41%	3.41%
1.10	5	5.68%	9.09%
1.15	16	18.18%	27.27%
1.20	23	26.14%	53.41%
1.25	19	21.59%	75.00%
1.30	13	14.77%	89.77%
1.35	3	3.41%	93.18%
1.40	3	3.41%	96.59%
1.45	1	1.14%	97.73%
1.50	1	1.14%	98.86%
1.55	1	1.14%	100.00%
1.60	0	0.00%	100.00%
1.65	0	0.00%	100.00%
1.70	0	0.00%	100.00%
1.75	0	0.00%	100.00%
1.80	0	0.00%	100.00%
Above 1.80	0	0.00%	100.00%
Total	88		



MINIMUM REQUIREMENTS
 As per ISO 6935-2: 1.04 mm
 As per ASTM A-615: 0.71 mm

LONGITUDINAL RIB HEIGHT	
Mean	0.859
Median	0.85
Mode	0.9
Std. Dev.	0.124
Min	0.65
Max	1.15
Count	88

Bin	Frequency	%	Cumulative %
Below 0.40	0	0.00%	0.00%
0.50	0	0.00%	0.00%
0.60	0	0.00%	0.00%
0.70	13	14.77%	14.77%
0.80	10	11.36%	26.14%
0.90	31	35.23%	61.36%
1.00	21	23.86%	85.23%
1.10	9	10.23%	95.45%
1.20	4	4.55%	100.00%
1.30	0	0.00%	100.00%
1.40	0	0.00%	100.00%
1.50	0	0.00%	100.00%
1.60	0	0.00%	100.00%
1.70	0	0.00%	100.00%
1.80	0	0.00%	100.00%
1.90	0	0.00%	100.00%
2.00	0	0.00%	100.00%
2.10	0	0.00%	100.00%
2.20 & more	0	0.00%	100.00%
Total	88		



MAXIMUM REQUIREMENTS
 As per ISO 6935-2: 2.40 mm

BEND TEST:
 ALL THE SAMPLES IN THIS CAMPAIGN PASSED THE BEND TEST MAINTAINING MANDREL DIA 3D

MINIMUM REQUIREMENTS
 As per ISO 6935-2: 3D
 As per ASTM A-615: 3.5D

REBEND TEST:
 ALL THE SAMPLES IN THIS CAMPAIGN PASSED THE REBEND TEST MAINTAINING MANDREL DIA 4D

MINIMUM REQUIREMENTS
 As per ISO 6935-2: 4D
 As per ASTM A-615: Not Required

Nominal Diameter D	Unit Weight	Yield or Proof Strength R _{eH}	Ultimate Tensile Strength R _m	T/Y Ratio	% Total Elongation at Maximum Force A _{gt}	% Elongation after Fracture A	% Elongation after Fracture A	Height of Transverse Rib	Height of Longitudinal Rib
(mm)	(Kg/m)	(MPa)	(MPa)		GL:200mm	GL: 203.2 mm	GL: 5D	mm	mm
16	1.560	540	625	1.16	9.5	15.5	22.0	1.25	0.85
16	1.552	535	615	1.15	10.0	16.5	22.5		
16	1.552	545	640	1.17	9.5	15.0	22.0		
16	1.555	550	655	1.19	9.0	14.0	21.0		
16	1.557	545	640	1.17	10.5	16.5	22.5		
16	1.551	535	630	1.18	10.0	17.0	22.5		
16	1.560	540	635	1.18	10.5	15.5	22.5		
16	1.554	545	645	1.18	9.5	16.0	22.0		
16	1.567	550	650	1.18	9.5	15.0	22.0		
16	1.560	540	645	1.19	9.0	15.5	22.0		
16	1.568	550	645	1.17	9.5	16.0	22.0		
16	1.565	530	635	1.20	10.0	16.5	22.5		
16	1.570	550	640	1.16	9.5	15.5	22.0		
16	1.566	535	630	1.18	10.5	17.0	23.0		
16	1.571	540	625	1.16	10.0	16.5	22.5		
16	1.568	550	635	1.15	9.0	14.5	21.5		
16	1.573	545	635	1.17	9.5	15.0	22.0		
16	1.570	550	650	1.18	9.0	14.5	21.5		
16	1.574	560	640	1.14	8.5	14.0	21.5		
16	1.571	545	635	1.17	9.5	15.0	22.0		
16	1.578	560	655	1.17	9.0	14.5	21.5		
16	1.573	555	650	1.17	9.5	15.5	22.0		
16	1.586	535	630	1.18	10.0	16.0	22.5		
16	1.580	545	640	1.17	9.5	15.0	22.0		
16	1.590	535	625	1.17	9.5	15.0	22.0		
16	1.585	550	650	1.18	10.0	16.0	22.5		
16	1.576	560	650	1.16	9.0	14.5	21.5		
16	1.572	530	620	1.17	8.5	14.0	21.0		
16	1.582	545	640	1.17	9.5	15.0	21.5		
16	1.583	545	645	1.18	10.0	15.5	21.5		
16	1.587	560	660	1.18	10.5	16.0	20.0		
16	1.586	560	660	1.18	10.5	16.0	20.0		
16	1.584	555	655	1.18	10.0	15.5	20.5		
16	1.582	560	660	1.18	10.5	16.0	20.0		
16	1.586	545	655	1.20	10.0	15.5	21.5		
16	1.587	560	665	1.19	10.5	16.0	20.0		
16	1.588	545	640	1.17	9.5	15.0	21.5		
16	1.589	555	655	1.18	10.0	15.5	21.0		
16	1.584	535	630	1.18	9.0	14.5	22.0		
16	1.582	545	645	1.18	10.0	15.5	21.5		
16	1.583	535	630	1.18	9.0	14.5	22.0		
16	1.584	545	635	1.17	9.0	14.5	21.5		
16	1.582	540	645	1.19	10.0	15.5	22.0		
16	1.580	555	670	1.21	11.0	16.5	21.0		
16	1.586	545	640	1.17	9.5	15.0	21.5		
16	1.587	545	655	1.20	10.0	15.5	21.5		
16	1.589	535	625	1.17	8.5	14.0	22.0		
16	1.586	545	640	1.17	9.5	15.0	21.5		
16	1.587	545	645	1.18	10.0	15.5	21.5		
16	1.586	535	620	1.16	8.5	14.0	22.0		
16	1.582	540	645	1.19	10.0	15.5	22.0		
16	1.584	550	665	1.21	11.0	16.5	21.0		
16	1.581	545	650	1.19	10.0	15.5	21.5		
16	1.586	555	670	1.21	11.0	16.5	21.0		
16	1.584	545	655	1.20	10.0	15.5	21.5		
16	1.582	555	675	1.22	11.0	16.5	20.5		
16	1.586	545	640	1.17	9.5	15.0	21.5		
16	1.583	545	650	1.19	10.0	15.5	21.5		
16	1.587	535	620	1.16	8.5	14.0	22.0		
16	1.589	540	645	1.19	10.0	15.5	22.0		
16	1.589	535	615	1.15	8.5	14.0	22.0		
16	1.587	540	630	1.17	9.0	14.5	22.0		
16	1.587	535	610	1.14	8.0	14.0	22.0		
16	1.583	535	630	1.18	9.0	14.5	22.0		
16	1.582	540	635	1.18	9.0	14.5	22.0		
16	1.587	535	645	1.21	10.0	15.5	22.0		
16	1.589	535	630	1.18	9.0	14.5	22.0		
16	1.587	545	650	1.19	10.0	15.5	21.5		
16	1.582	535	625	1.17	8.5	14.0	22.0		
16	1.584	535	645	1.21	10.0	15.5	22.0		
16	1.586	535	640	1.20	9.5	15.0	22.0		

0

16	1.587	550	650	1.18	10.0	15.5	21.0	1.25	0.84
16	1.586	545	640	1.17	9.5	15.0	21.5		
16	1.587	550	650	1.18	10.0	15.5	21.5		
16	1.582	540	635	1.18	9.0	14.5	22.0		
16	1.586	550	650	1.18	10.0	15.5	21.0		
16	1.584	545	645	1.18	10.0	15.5	21.5		
16	1.583	535	620	1.16	8.5	14.0	22.0		
16	1.587	540	645	1.19	10.0	15.5	22.0		
16	1.582	550	660	1.20	10.5	16.0	21.0		
16	1.586	545	645	1.18	10.0	15.5	21.5	1.20	0.86
16	1.584	555	660	1.19	10.5	16.0	20.5		
16	1.582	545	650	1.19	10.0	15.5	21.5		
16	1.586	555	660	1.19	10.5	16.0	21.0		
16	1.587	545	640	1.17	9.5	15.0	21.5		
16	1.582	545	650	1.19	10.0	15.5	21.5		
16	1.584	535	625	1.17	8.5	14.0	22.0		
16	1.586	540	645	1.19	10.0	15.5	22.0		
16	1.584	535	620	1.16	8.5	14.0	22.0		
16	1.586	540	630	1.17	9.0	14.5	22.0		
16	1.587	535	625	1.17	8.5	14.0	22.0		
16	1.582	535	630	1.18	9.0	14.5	22.0		
16	1.586	540	635	1.18	9.0	14.5	22.0		
16	1.589	535	645	1.21	10.0	15.5	22.0		
16	1.591	535	635	1.19	9.0	14.5	22.0		
16	1.594	545	650	1.19	10.0	15.5	21.5		
16	1.594	535	630	1.18	9.0	14.5	22.0	1.25	0.92
16	1.596	535	645	1.21	10.0	15.5	22.0		
16	1.598	535	645	1.21	10.0	15.5	22.0		
16	1.593	550	650	1.18	10.0	15.5	21.5		
16	1.584	545	640	1.17	9.5	15.0	21.5		
16	1.580	550	650	1.18	10.0	15.5	21.5		
16	1.584	540	635	1.18	9.0	14.5	22.0		
16	1.582	550	650	1.18	10.0	15.5	21.5		
16	1.586	535	635	1.19	9.0	14.5	22.0		
16	1.583	545	650	1.19	10.0	15.5	21.5		
16	1.587	540	645	1.19	10.0	15.5	22.0		
16	1.582	550	655	1.19	10.0	15.5	21.5		
16	1.593	545	630	1.16	8.0	14.0	22.0		
16	1.588	540	620	1.15	9.5	15.0	20.5		
16	1.595	560	655	1.17	8.0	16.0	22.0		
16	1.590	545	640	1.17	9.5	14.5	22.0		
16	1.597	550	625	1.14	8.0	15.0	21.0	1.30	0.75
16	1.593	550	635	1.15	9.5	16.5	20.5		
16	1.591	560	635	1.13	8.0	15.0	20.5		
16	1.577	560	660	1.18	10.0	15.5	19.5		
16	1.587	560	650	1.16	10.0	15.5	23.0		
16	1.579	545	630	1.16	8.0	15.5	21.0		
16	1.587	560	635	1.13	9.5	16.0	21.0		
16	1.579	555	650	1.17	8.0	14.0	20.5		
16	1.587	540	625	1.16	10.5	15.0	20.5		
16	1.581	530	625	1.18	8.0	16.0	20.0		
16	1.589	530	610	1.15	9.5	14.0	19.5		
16	1.584	550	615	1.12	8.0	15.0	20.5		
16	1.590	530	625	1.18	9.5	15.0	20.5		
16	1.586	545	615	1.13	8.0	14.0	20.0		
16	1.585	545	635	1.17	10.0	16.5	20.5		
16	1.587	540	625	1.16	8.0	14.5	22.0		
16	1.586	560	630	1.13	9.0	14.0	20.0	1.25	0.82
16	1.590	545	630	1.16	10.0	15.0	22.5		
16	1.589	530	620	1.17	8.0	15.5	23.0		
16	1.591	535	615	1.15	9.5	14.0	22.0		
16	1.590	545	620	1.14	8.5	15.0	22.0		
16	1.592	535	625	1.17	8.0	16.0	23.0		
16	1.594	540	605	1.12	9.0	14.5	20.5		
16	1.588	560	640	1.14	9.5	14.0	20.5		
16	1.583	540	625	1.16	8.0	15.0	21.0		
16	1.586	550	650	1.18	9.5	14.5	20.5		
16	1.580	545	625	1.15	8.0	15.5	22.0		
16	1.588	545	640	1.17	9.5	14.0	21.0		
16	1.586	550	650	1.18	8.0	16.0	20.5		
16	1.590	555	645	1.16	9.5	15.5	22.5		
16	1.596	560	655	1.17	8.0	14.0	21.0		
16	1.584	545	630	1.16	10.0	15.0	22.0		
16	1.580	560	645	1.15	10.5	15.5	22.5		
16	1.588	535	625	1.17	8.0	14.0	21.0		
16	1.586	530	620	1.17	9.5	16.0	21.0		

16	1.584	550	630	1.15	10.5	14.0	20.5	1.15	0.80
16	1.590	560	635	1.13	8.0	15.0	20.5		
16	1.584	545	635	1.17	9.0	16.0	20.0		
16	1.593	555	645	1.16	9.5	14.0	20.5		
16	1.584	545	625	1.15	8.0	15.0	21.0		
16	1.596	545	625	1.15	9.0	16.5	20.0		
16	1.583	550	630	1.15	10.0	14.0	20.0		
16	1.597	555	635	1.14	8.0	15.0	19.0		
16	1.582	550	635	1.15	9.5	14.0	20.5		
16	1.593	540	635	1.18	8.0	15.5	20.5		
16	1.584	545	630	1.16	8.5	14.0	20.5		
16	1.593	560	630	1.13	9.5	16.5	21.0		
16	1.590	555	635	1.14	8.0	15.0	20.5		
16	1.594	540	635	1.18	9.5	14.5	20.5		
16	1.598	550	645	1.17	8.0	15.5	21.5		
16	1.593	555	635	1.14	10.0	16.5	22.5		
16	1.593	540	625	1.16	8.0	16.0	20.0		
16	1.598	545	640	1.17	10.0	14.0	22.0		
16	1.597	560	640	1.14	10.5	15.5	20.5		
16	1.593	545	630	1.16	8.0	14.0	21.5		
16	1.594	540	635	1.18	9.0	15.5	22.5		
16	1.582	555	635	1.14	8.5	14.5	22.0		
16	1.594	560	640	1.14	9.5	14.5	21.0		
16	1.593	555	640	1.15	10.5	15.0	21.0		
16	1.594	540	635	1.18	8.0	14.0	20.5		
16	1.590	550	630	1.15	9.5	16.0	21.0		
16	1.594	550	635	1.15	8.0	15.5	22.0		
16	1.596	540	635	1.18	10.0	14.0	22.0		
16	1.594	540	630	1.17	8.0	15.0	21.5		
16	1.593	540	635	1.18	9.5	14.5	22.5		
16	1.596	545	645	1.18	8.0	15.0	22.5		
16	1.594	540	640	1.19	9.5	16.5	21.0		
16	1.593	545	630	1.16	8.0	14.0	23.0		
16	1.588	560	635	1.13	10.0	15.5	20.0		
16	1.589	555	645	1.16	10.5	14.0	20.5		
16	1.592	550	650	1.18	8.0	15.0	20.5		
16	1.593	555	650	1.17	9.0	16.5	22.5		
16	1.594	550	655	1.19	8.5	14.0	22.5		
16	1.590	550	645	1.17	10.0	15.0	21.0		
16	1.587	555	650	1.17	9.0	14.5	21.5		
16	1.589	545	635	1.17	10.0	16.5	22.5		
16	1.598	535	625	1.17	9.5	15.0	22.0		
16	1.598	550	645	1.17	8.5	14.0	21.0		
16	1.596	535	625	1.17	10.5	16.5	23.0		
16	1.595	555	645	1.16	9.0	14.5	21.5		
16	1.595	535	635	1.19	9.5	15.5	22.0		
16	1.593	550	655	1.19	8.5	14.0	21.0		
16	1.578	540	630	1.17	10.0	16.5	22.5		
16	1.580	555	655	1.18	9.0	14.5	21.5		
16	1.582	545	640	1.17	10.5	17.0	23.0		
16	1.585	550	640	1.16	9.0	14.5	21.5		
16	1.583	560	655	1.17	8.5	14.0	20.5		
16	1.588	545	635	1.17	9.5	15.5	22.0		
16	1.586	535	620	1.16	9.0	14.5	21.5		
16	1.590	560	650	1.16	8.5	14.0	21.0		
16	1.577	535	630	1.18	9.5	15.0	22.0		
16	1.579	540	630	1.17	9.0	14.5	21.5		
16	1.574	540	635	1.18	10.0	16.0	22.5		
16	1.565	560	655	1.17	8.5	14.0	21.0		
16	1.573	535	630	1.18	9.5	15.5	22.0		
16	1.578	550	655	1.19	10.0	16.5	22.5		
16	1.570	535	630	1.18	9.0	14.5	21.5		
16	1.573	550	645	1.17	9.5	15.0	22.0		
16	1.567	560	660	1.18	8.5	14.0	21.0		
16	1.571	565	655	1.16	8.0	14.0	20.5		
16	1.572	555	645	1.16	8.5	14.0	20.5		
16	1.575	560	655	1.17	9.0	14.0	21.0		
16	1.573	545	640	1.17	9.0	14.5	21.5		
16	1.576	555	650	1.17	8.5	14.0	21.0		
16	1.578	535	640	1.20	10.0	16.0	22.5		
16	1.579	550	645	1.17	8.5	14.0	20.5		
16	1.581	525	620	1.18	8.0	14.0	20.0		
16	1.584	530	615	1.16	8.5	14.0	20.5		
16	1.583	540	635	1.18	9.0	14.5	21.5		
16	1.588	535	625	1.17	9.5	15.0	22.0		
16	1.589	540	625	1.16	9.5	15.0	22.0		

16	1.592	535	615	1.15	10.0	16.0	22.5	1.25	0.80
16	1.590	545	640	1.17	9.5	15.5	22.0		
16	1.584	550	655	1.19	8.5	14.0	21.0		
16	1.585	545	640	1.17	10.0	16.5	22.5		
16	1.581	535	630	1.18	10.0	16.0	22.5		
16	1.584	540	635	1.18	10.5	17.0	22.5		
16	1.580	545	645	1.18	9.5	15.0	22.0		
16	1.588	540	650	1.20	9.5	14.5	22.0		
16	1.592	540	645	1.19	10.0	15.5	22.0		
16	1.589	545	645	1.18	9.5	15.0	22.0		
16	1.593	530	635	1.20	10.0	16.0	22.5		
16	1.591	550	640	1.16	9.5	15.5	22.0		
16	1.595	535	630	1.18	10.0	16.0	22.5		
16	1.576	540	625	1.16	10.0	16.0	22.5		
16	1.572	550	635	1.15	9.0	14.5	21.5		
16	1.577	545	635	1.17	9.5	15.0	22.0		
16	1.573	550	650	1.18	8.5	14.0	21.5		
16	1.580	560	640	1.14	9.0	14.5	21.5		
16	1.575	545	635	1.17	9.5	15.0	22.0		
16	1.567	540	635	1.18	10.0	16.0	22.5		
16	1.564	560	655	1.17	8.5	14.0	21.0		
16	1.572	535	630	1.18	9.5	15.5	22.0		
16	1.567	550	655	1.19	10.0	16.5	22.5		
16	1.575	535	625	1.17	9.0	14.5	21.5		
16	1.570	550	650	1.18	9.5	15.0	22.0		
16	1.581	560	660	1.18	8.5	14.0	21.0		
16	1.572	565	655	1.16	8.0	14.0	20.5		
16	1.582	535	620	1.16	8.5	14.0	21.0		
16	1.577	540	630	1.17	10.0	15.5	22.5		
16	1.584	540	625	1.16	9.5	16.0	22.0		
16	1.580	545	635	1.17	9.0	14.5	21.5		
16	1.587	535	625	1.17	9.5	15.0	22.0		
16	1.583	555	640	1.15	9.0	14.5	21.5		
16	1.596	545	640	1.17	10.5	17.0	23.0		
16	1.598	555	655	1.18	9.5	15.5	22.0		
16	1.580	550	660	1.20	10.0	16.5	22.5		
16	1.584	565	675	1.19	9.0	14.5	21.5		
16	1.586	545	635	1.17	9.0	14.5	21.5		
16	1.587	555	655	1.18	10.0	15.5	21.0		
16	1.589	545	640	1.17	9.5	15.0	21.5		
16	1.586	555	650	1.17	10.0	15.5	21.0		
16	1.584	540	635	1.18	9.0	14.5	22.0		
16	1.584	545	645	1.18	10.0	15.5	21.5		
16	1.586	540	660	1.22	10.5	16.0	22.0		
16	1.587	555	675	1.22	11.0	16.5	21.0		
16	1.582	535	635	1.19	9.0	14.5	22.0		
16	1.587	550	650	1.18	10.0	15.5	21.5		
16	1.586	550	650	1.18	10.0	15.5	21.5		
16	1.584	555	665	1.20	10.5	16.0	21.0		
16	1.585	535	635	1.19	9.0	14.5	22.0		
16	1.586	545	650	1.19	10.0	15.5	21.0		
16	1.587	530	620	1.17	8.5	14.0	21.5		
16	1.587	535	620	1.16	8.5	14.0	22.0		
16	1.589	545	640	1.17	9.5	15.0	21.5		
16	1.586	550	650	1.18	10.0	15.5	21.5		
16	1.582	550	645	1.17	10.0	15.5	21.5		
16	1.584	550	660	1.20	10.5	16.0	21.5		
16	1.586	535	620	1.16	8.5	14.0	22.0		
16	1.584	535	625	1.17	8.5	14.0	22.0		
16	1.586	535	620	1.16	8.5	14.0	22.0		
16	1.585	535	630	1.18	9.0	14.5	22.0		
16	1.587	540	625	1.16	8.5	14.0	22.0		
16	1.582	545	635	1.17	9.0	14.5	21.5		
16	1.589	530	625	1.18	8.5	14.0	22.0		
16	1.588	540	645	1.19	10.0	15.5	22.0		
16	1.587	535	630	1.18	9.0	14.5	22.0		
16	1.587	545	640	1.17	9.5	15.0	21.5		
16	1.584	550	645	1.17	10.0	15.5	21.5		
16	1.589	550	650	1.18	10.0	15.5	21.5		
16	1.587	535	620	1.16	8.5	14.0	22.0		
16	1.582	540	640	1.19	9.5	15.0	22.0		
16	1.587	555	675	1.22	11.0	16.5	21.0		
16	1.586	555	675	1.22	11.0	16.5	21.0		
16	1.584	535	620	1.16	8.5	14.0	22.0		

16	1.586	535	630	1.18	9.0	14.5	22.0	1.30	0.95
16	1.588	545	645	1.18	10.0	15.5	21.5		
16	1.587	535	625	1.17	8.5	14.0	22.0		
16	1.589	535	635	1.19	9.0	14.5	22.0		
16	1.584	540	635	1.18	9.0	14.5	22.0		
16	1.587	550	655	1.19	10.0	15.5	21.5		
16	1.585	555	660	1.19	10.5	16.0	21.0		
16	1.586	545	640	1.17	9.5	15.0	21.5		
16	1.584	555	655	1.18	10.0	15.5	21.0		
16	1.582	535	620	1.16	8.5	14.0	22.0		
16	1.587	535	630	1.18	9.0	14.5	22.0		
16	1.584	540	635	1.18	9.0	14.5	22.0		
16	1.585	535	645	1.21	10.0	15.5	22.0		
16	1.586	535	630	1.18	9.0	14.5	22.0		
16	1.587	545	650	1.19	10.0	15.5	21.5		
16	1.584	535	630	1.18	9.0	14.5	22.0		
16	1.589	535	645	1.21	10.0	15.5	22.0		
16	1.587	535	640	1.20	9.5	15.0	22.0		
16	1.589	550	650	1.18	10.0	15.5	21.5		
16	1.591	545	640	1.17	9.5	15.0	21.5		
16	1.593	550	650	1.18	10.0	15.5	21.5		
16	1.589	540	635	1.18	9.0	14.5	22.0		
16	1.588	550	650	1.18	10.0	15.5	21.5		
16	1.587	535	635	1.19	9.0	14.5	22.0		
16	1.586	545	650	1.19	10.0	15.5	21.5		
16	1.584	540	645	1.19	10.0	15.5	22.0		
16	1.586	550	655	1.19	10.0	15.5	21.5		
16	1.588	555	645	1.16	10.0	15.5	21.0		
16	1.587	550	635	1.15	9.0	14.5	21.5		
16	1.585	540	630	1.17	9.0	14.5	22.0		
16	1.584	540	640	1.19	9.5	15.0	22.0		
16	1.587	555	660	1.19	10.5	16.0	21.0		
16	1.587	555	660	1.19	10.5	16.0	21.0		
16	1.586	540	630	1.17	9.0	14.5	22.0		
16	1.587	535	625	1.17	8.5	14.0	22.0		
16	1.587	545	645	1.18	10.0	15.5	21.5		
16	1.589	535	625	1.17	8.5	14.0	22.0		
16	1.587	535	635	1.19	9.0	14.5	22.0		
16	1.589	540	635	1.18	9.0	14.5	22.0		
16	1.590	550	655	1.19	10.0	15.5	21.5		
16	1.589	555	660	1.19	10.5	16.0	21.0		
16	1.589	545	640	1.17	9.5	15.0	21.5		
16	1.588	555	655	1.18	10.0	15.5	21.0		
16	1.595	550	650	1.18	10.0	15.0	20.0		
16	1.598	545	645	1.18	8.0	15.5	21.0		
16	1.594	540	630	1.17	9.5	14.0	21.0		
16	1.584	545	635	1.17	8.0	16.0	20.5		
16	1.592	555	635	1.14	9.5	15.5	19.0		
16	1.594	530	625	1.18	8.0	14.0	20.5		
16	1.593	530	620	1.17	9.5	15.0	19.5		
16	1.596	535	625	1.17	8.0	16.0	20.5		
16	1.594	525	625	1.19	10.0	15.5	19.0		
16	1.593	545	635	1.17	8.0	14.0	19.5		
16	1.598	530	615	1.16	9.5	16.5	20.5		
16	1.596	550	625	1.14	8.0	14.0	20.5		
16	1.597	535	610	1.14	9.5	15.5	20.5		
16	1.598	555	645	1.16	8.0	14.0	22.5		
16	1.593	545	645	1.18	10.0	15.0	20.5		
16	1.594	545	645	1.18	8.0	16.0	23.0		
16	1.597	540	620	1.15	9.5	15.5	22.5		
16	1.593	545	620	1.14	8.0	16.5	21.0		
16	1.590	545	630	1.16	9.5	14.5	21.0		
16	1.596	545	645	1.18	8.0	15.0	21.0		
16	1.570	545	645	1.18	9.5	14.0	20.5		
16	1.572	535	630	1.18	8.0	15.0	22.0		
16	1.570	545	645	1.18	9.5	16.5	20.5		
16	1.573	545	630	1.16	8.0	14.0	22.5		
16	1.574	540	625	1.16	10.0	15.5	22.0		
16	1.573	525	625	1.19	8.0	14.5	20.5		
16	1.574	540	625	1.16	9.5	15.0	21.0		
16	1.573	530	625	1.18	8.0	16.0	21.0		
16	1.576	540	620	1.15	9.0	14.0	21.5		
16	1.574	530	630	1.19	10.0	15.5	20.5		
16	1.573	540	625	1.16	8.0	14.0	20.5		
16	1.576	545	625	1.15	9.0	15.5	22.5		
16	1.574	540	635	1.18	10.0	14.0	22.0		


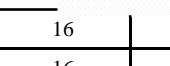
16	1.579	550	625	1.14	8.0	16.5	20.5	1.15	0.82
16	1.576	550	630	1.15	8.0	14.0	20.0		
16	1.578	545	650	1.19	9.5	15.0	21.0		
16	1.572	545	630	1.16	8.0	15.5	21.0		
16	1.576	545	635	1.17	9.5	14.0	23.0		
16	1.580	535	625	1.17	8.5	16.5	21.0		
16	1.584	540	640	1.19	9.5	14.0	21.5		
16	1.581	555	655	1.18	8.0	15.5	19.5		
16	1.583	560	660	1.18	10.0	15.0	22.0		
16	1.584	560	650	1.16	8.0	14.0	21.0		
16	1.582	545	615	1.13	9.5	16.0	21.5		
16	1.586	535	615	1.15	8.5	15.5	21.0		
16	1.583	560	660	1.18	9.0	14.0	21.5		
16	1.586	560	650	1.16	8.0	15.0	22.5		
16	1.586	560	640	1.14	9.0	16.5	20.0		
16	1.585	545	640	1.17	10.0	14.0	22.0		
16	1.584	550	635	1.15	10.0	15.5	21.0		
16	1.583	530	610	1.15	8.0	14.0	21.5		
16	1.584	535	630	1.18	9.5	15.0	20.0		
16	1.583	525	615	1.17	10.5	15.5	21.0		
16	1.586	555	635	1.14	8.0	14.0	20.5		
16	1.583	545	635	1.17	9.0	15.0	22.0		
16	1.589	550	630	1.15	8.5	16.0	21.0		
16	1.588	560	655	1.17	9.5	15.5	21.0		
16	1.590	560	660	1.18	8.0	14.0	20.5		
16	1.589	560	655	1.17	10.5	15.0	21.0		
16	1.592	550	655	1.19	10.5	14.0	20.5		
16	1.584	550	650	1.18	8.0	15.0	20.5		
16	1.592	540	640	1.19	9.0	16.5	21.0		
16	1.588	545	630	1.16	10.0	14.0	22.0		
16	1.596	540	620	1.15	8.0	15.5	20.5		
16	1.583	560	655	1.17	9.5	14.0	22.0		
16	1.596	545	640	1.17	10.5	16.0	22.0		
16	1.588	550	625	1.14	8.0	15.5	21.0		
16	1.594	550	635	1.15	9.0	14.0	20.5		
16	1.589	560	650	1.16	8.0	16.5	19.5		
16	1.583	550	650	1.18	10.5	14.0	23.0		
16	1.589	550	650	1.18	8.0	15.0	21.0		
16	1.592	560	635	1.13	9.0	16.5	21.0		
16	1.590	560	625	1.12	10.5	16.0	20.5		
16	1.596	555	635	1.14	8.0	14.0	20.5		
16	1.594	540	625	1.16	9.0	15.0	20.5		
16	1.596	530	630	1.19	10.0	16.5	21.0		
16	1.594	550	630	1.15	9.0	15.5	21.0		
16	1.590	545	630	1.16	8.5	16.0	22.5		
16	1.588	540	635	1.18	10.5	16.5	23.0		
16	1.580	535	630	1.18	10.0	15.5	22.5		
16	1.585	545	645	1.18	9.5	14.5	22.0		
16	1.578	550	645	1.17	9.0	15.0	21.5		
16	1.589	560	655	1.17	8.5	14.0	21.0		
16	1.583	560	655	1.17	9.5	15.5	22.0		
16	1.592	560	650	1.16	8.0	13.5	20.5		
16	1.588	555	645	1.16	8.5	14.0	21.0		
16	1.584	550	645	1.17	9.0	14.5	21.5		
16	1.580	550	645	1.17	9.5	15.0	22.0		
16	1.583	540	630	1.17	10.0	15.5	22.5		
16	1.577	545	635	1.17	10.5	16.5	23.0		
16	1.584	540	635	1.18	9.5	15.0	22.0		
16	1.574	550	650	1.18	10.0	17.0	23.0		
16	1.587	565	660	1.17	8.5	14.0	21.0		
16	1.580	560	655	1.17	8.0	13.5	20.5		
16	1.590	560	655	1.17	9.0	14.5	21.5		
16	1.582	565	650	1.15	9.5	15.0	22.0		
16	1.586	555	660	1.19	10.0	16.0	22.5		
16	1.581	565	660	1.17	8.0	13.5	20.5		
16	1.587	560	655	1.17	9.0	15.5	22.0		
16	1.582	560	650	1.16	8.5	14.0	21.0		
16	1.591	540	630	1.17	9.5	15.0	22.0		
16	1.585	540	620	1.15	8.0	13.5	20.5		
16	1.593	560	650	1.16	8.5	13.5	21.0		
16	1.586	545	640	1.17	9.5	14.5	22.0		
16	1.594	540	625	1.16	10.0	16.0	22.5		
16	1.588	550	635	1.15	8.0	14.0	20.5		
16	1.577	560	655	1.17	8.0	13.5	20.5		
16	1.572	550	660	1.20	10.5	17.0	23.0		
16	1.579	555	645	1.16	8.5	14.0	21.0		
16	1.579	555	645	1.16	8.5	14.0	21.0		

16	1.573	560	650	1.16	8.5	14.0	21.0	1.20	0.65
16	1.580	555	640	1.15	8.0	13.5	20.5		
16	1.573	560	645	1.15	8.0	14.0	20.5		
16	1.581	555	635	1.14	9.0	14.5	21.5		
16	1.576	540	630	1.17	8.5	14.0	21.0		
16	1.583	525	610	1.16	8.0	13.5	20.0		
16	1.577	530	615	1.16	9.5	15.0	22.0		
16	1.585	540	640	1.19	9.5	15.5	22.0		
16	1.579	525	615	1.17	8.0	13.5	20.5		
16	1.588	545	635	1.17	10.0	16.0	22.5		
16	1.580	545	625	1.15	8.5	13.5	20.5		
16	1.589	540	630	1.17	10.0	16.0	22.5		
16	1.582	560	650	1.16	10.5	17.0	23.0		
16	1.590	545	640	1.17	9.5	15.5	22.0		
16	1.584	530	615	1.16	9.0	15.0	22.0		
16	1.582	535	620	1.16	10.5	17.0	23.0		
16	1.575	545	640	1.17	8.5	13.5	20.5		
16	1.571	535	615	1.15	9.0	14.0	21.0		
16	1.567	565	655	1.16	8.5	13.5	20.5		
16	1.574	540	625	1.16	9.0	14.5	22.0		
16	1.570	550	650	1.18	8.5	14.0	21.0		
16	1.576	535	625	1.17	10.0	16.0	22.5		
16	1.573	550	640	1.16	9.5	15.5	22.5		
16	1.578	540	630	1.17	10.0	16.5	23.0		
16	1.574	545	630	1.16	10.0	16.0	22.5		
16	1.554	530	610	1.15	8.5	13.5	20.0		
16	1.554	530	620	1.17	8.0	14.0	20.0		
16	1.567	555	645	1.16	9.0	14.5	21.5		
16	1.566	565	650	1.15	8.0	13.5	20.5		
16	1.573	560	650	1.16	8.5	14.0	20.5		
16	1.570	555	650	1.17	9.0	14.0	21.0		
16	1.575	550	655	1.19	9.0	14.5	21.5		
16	1.572	550	655	1.19	9.5	15.5	22.0		
16	1.579	555	655	1.18	8.5	14.0	21.0		
16	1.574	550	660	1.20	10.0	16.0	22.5		
16	1.568	540	635	1.18	10.0	16.5	23.0		
16	1.564	550	645	1.17	9.0	14.5	21.5		
16	1.584	545	640	1.17	9.5	15.0	22.0		
16	1.575	555	650	1.17	9.0	14.5	21.5		
16	1.583	560	650	1.16	8.5	13.5	20.5		
16	1.584	565	655	1.16	8.0	13.0	20.0		
16	1.588	560	655	1.17	8.5	14.0	21.0		
16	1.590	565	660	1.17	8.0	14.0	20.5		
16	1.581	550	645	1.17	8.5	14.0	21.0		
16	1.583	560	655	1.17	9.0	14.0	21.0		
16	1.584	545	640	1.17	10.0	15.5	22.5		
16	1.586	555	650	1.17	8.5	14.0	21.0		
16	1.587	540	640	1.19	9.5	16.0	22.5		
16	1.590	550	645	1.17	9.0	15.5	22.0		
16	1.583	555	640	1.15	10.5	16.0	23.0		
16	1.583	555	640	1.15	10.5	16.5	23.0		
16	1.587	555	650	1.17	10.0	16.0	22.5		
16	1.584	550	640	1.16	10.0	16.0	22.5		
16	1.580	555	650	1.17	10.5	16.5	23.0		
16	1.588	560	650	1.16	10.0	16.0	22.5		
16	1.591	550	640	1.16	9.5	15.0	21.0		
16	1.589	555	645	1.16	9.5	16.5	23.0		
16	1.587	555	635	1.14	9.5	16.0	22.5		
16	1.583	550	640	1.16	9.5	15.5	22.0		
16	1.589	560	640	1.14	10.0	16.0	22.5		
16	1.587	560	645	1.15	9.5	16.0	22.0		
16	1.595	555	645	1.16	9.5	15.5	22.5		
16	1.586	560	650	1.16	9.0	15.5	22.0		
16	1.576	550	640	1.16	9.0	15.0	21.5		
16	1.579	550	635	1.15	9.0	15.0	21.0		
16	1.573	550	635	1.15	9.5	15.5	21.5		
16	1.578	555	645	1.16	9.0	15.0	21.5		
16	1.570	555	645	1.16	10.0	16.0	22.0		
16	1.575	545	635	1.17	9.0	14.5	21.0		
16	1.578	555	650	1.17	9.5	15.5	22.0		
16	1.582	555	645	1.16	9.5	15.5	22.0		
16	1.571	545	635	1.17	9.0	15.0	21.0		
16	1.577	555	645	1.16	9.5	15.5	22.0		
16	1.573	555	645	1.16	10.0	16.0	22.5		
16	1.578	560	650	1.16	10.0	16.5	22.5		
16	1.575	550	640	1.16	10.0	16.0	22.0		

16	1.580	550	645	1.17	10.5	16.0	22.0		
16	1.583	535	630	1.18	9.5	15.0	21.0		
16	1.583	545	630	1.16	9.5	15.0	21.0		
16	1.587	550	630	1.15	10.0	16.0	22.0		
16	1.584	550	635	1.15	10.0	16.0	22.0		
16	1.580	560	645	1.15	9.5	15.0	21.0		
16	1.588	550	635	1.15	9.0	15.0	21.0		
16	1.591	555	635	1.14	10.5	16.5	22.5		
16	1.589	545	635	1.17	9.5	15.5	22.0		
16	1.587	555	640	1.15	9.0	15.0	21.5		
16	1.583	560	640	1.14	9.5	16.0	22.0		
16	1.589	555	635	1.14	9.0	15.0	21.0		
16	1.587	555	640	1.15	9.0	15.0	21.0		
16	1.595	550	635	1.15	9.5	15.5	22.0	1.15	0.80
16	1.586	555	630	1.14	9.5	15.5	22.0		
16	1.576	555	640	1.15	10.0	16.0	22.5		
16	1.579	550	635	1.15	9.5	15.5	22.0		
16	1.573	550	635	1.15	9.0	15.0	21.5		
16	1.578	550	635	1.15	9.0	15.0	21.0		
16	1.570	540	630	1.17	10.5	16.5	22.5		
16	1.575	550	635	1.15	10.0	16.0	22.0		
16	1.578	545	630	1.16	10.0	16.0	22.0		
16	1.582	555	635	1.14	10.5	16.5	22.5		
16	1.571	550	630	1.15	10.5	16.5	22.5		
16	1.577	540	625	1.16	10.0	16.0	22.0		
16	1.573	550	630	1.15	9.5	16.0	22.5		
16	1.578	555	640	1.15	9.5	15.5	22.0		
16	1.575	550	635	1.15	9.0	15.0	21.0		
16	1.580	550	635	1.15	9.0	15.0	21.0	1.20	1.10
16	1.595	545	635	1.17	10.0	16.5	22.5		
16	1.588	535	620	1.16	9.5	15.0	21.5		
16	1.571	545	630	1.16	9.5	15.5	21.5		
16	1.574	545	630	1.16	10.0	16.0	22.0		
16	1.578	550	640	1.16	9.5	16.0	22.0		
16	1.582	540	625	1.16	9.5	15.5	21.5		
16	1.589	550	635	1.15	10.0	16.0	22.5		
16	1.592	555	650	1.17	9.5	15.5	22.0		
16	1.587	550	635	1.15	9.5	15.5	22.0		
16	1.594	545	635	1.17	9.5	15.5	22.0		
16	1.578	545	635	1.17	10.5	16.5	23.0		
16	1.577	545	630	1.16	10.0	16.0	22.5		
16	1.573	555	640	1.15	10.0	16.0	22.0		
16	1.579	555	640	1.15	9.5	15.5	22.0		
16	1.575	550	635	1.15	10.0	16.0	22.0		
16	1.580	550	635	1.15	10.0	16.0	22.5	1.25	0.85
16	1.577	550	635	1.15	10.5	16.0	22.5		
16	1.582	560	645	1.15	9.5	15.0	21.0		
16	1.570	555	640	1.15	9.5	15.0	21.0		
16	1.575	550	635	1.15	9.5	15.5	22.0		
16	1.577	560	650	1.16	10.0	16.0	22.5		
16	1.581	560	650	1.16	10.0	16.0	22.5		
16	1.573	565	635	1.12	9.0	14.0	21.0		
16	1.575	560	625	1.12	9.5	15.0	20.0		
16	1.574	550	640	1.16	10.0	16.0	21.0		
16	1.575	550	645	1.17	8.0	14.0	22.5		
16	1.581	560	660	1.18	9.5	15.5	20.0		
16	1.584	540	635	1.18	8.0	14.0	20.0		
16	1.580	540	635	1.18	9.5	15.0	20.5		
16	1.583	555	655	1.18	8.0	16.0	21.0		
16	1.584	545	645	1.18	9.5	15.0	21.0		
16	1.582	555	650	1.17	8.0	14.0	20.5		
16	1.584	550	645	1.17	8.0	15.0	20.5	1.25	0.75
16	1.586	540	635	1.18	9.5	16.5	21.0		
16	1.584	530	630	1.19	8.0	15.0	21.0		
16	1.588	555	645	1.16	9.0	14.0	22.0		
16	1.584	545	640	1.17	8.5	15.5	20.5		
16	1.589	555	655	1.18	9.5	14.0	20.0		
16	1.583	540	640	1.19	8.0	15.0	19.5		
16	1.589	540	635	1.18	9.5	16.0	20.5		
16	1.589	550	635	1.15	8.0	15.0	22.5		
16	1.588	545	630	1.16	10.0	14.0	19.5		
16	1.590	550	625	1.14	8.0	15.0	20.0		
16	1.584	545	640	1.17	9.5	14.0	21.0		
16	1.586	535	630	1.18	8.0	15.5	20.5		
16	1.582	545	635	1.17	9.5	16.5	20.5		
16	1.583	550	635	1.15	8.0	14.0	20.5		

16	1.590	545	645	1.18	9.5	15.5	19.5	1.20	1.00
16	1.582	540	635	1.18	8.0	14.0	21.0		
16	1.591	540	640	1.19	10.0	16.5	20.5		
16	1.586	550	635	1.15	8.0	14.0	21.0		
16	1.594	535	635	1.19	9.5	15.5	20.5		
16	1.583	545	640	1.17	8.0	14.0	21.0		
16	1.583	555	640	1.15	9.5	15.5	20.5		
16	1.584	560	650	1.16	8.0	14.0	20.5		
16	1.586	560	660	1.18	9.5	15.5	21.0		
16	1.582	540	640	1.19	8.0	14.0	22.0	1.15	0.75
16	1.589	545	645	1.18	10.0	16.0	20.5		
16	1.584	555	660	1.19	8.0	14.0	20.5		
16	1.583	560	655	1.17	9.5	15.5	22.0		
16	1.583	545	630	1.16	8.0	14.0	22.0		
16	1.586	540	620	1.15	9.0	15.5	20.5		
16	1.584	560	650	1.16	10.0	14.0	21.0		
16	1.586	545	640	1.17	8.0	16.0	22.0		
16	1.582	550	625	1.14	9.5	14.0	22.5		
16	1.589	550	635	1.15	8.0	15.0	20.5		
16	1.583	560	635	1.13	9.5	16.0	19.5		
16	1.588	550	655	1.19	8.0	14.0	23.0		
16	1.589	540	635	1.18	9.0	15.0	21.0		
16	1.570	535	635	1.19	10.0	16.0	21.0		
16	1.576	530	625	1.18	8.0	15.5	20.0		
16	1.572	550	615	1.12	9.5	14.0	22.0		
16	1.577	525	625	1.19	8.0	15.0	22.5	1.10	0.85
16	1.574	545	640	1.17	9.0	14.0	20.5		
16	1.582	545	615	1.13	10.0	16.5	21.0		
16	1.573	555	635	1.14	8.0	14.0	20.5		
16	1.584	560	625	1.12	9.5	15.5	21.0		
16	1.576	550	630	1.15	8.0	15.0	23.0		
16	1.588	550	645	1.17	9.5	14.0	21.0		
16	1.583	560	655	1.17	8.0	15.5	21.0		
16	1.590	545	635	1.17	9.5	14.0	22.5		
16	1.584	555	640	1.15	8.0	16.5	21.0		
16	1.576	545	640	1.17	9.0	14.0	22.5		
16	1.583	550	645	1.17	10.0	15.0	22.0		
16	1.588	525	620	1.18	8.0	14.0	20.5		
16	1.581	530	615	1.16	9.5	15.5	20.0		
16	1.584	560	640	1.14	8.0	14.0	23.0		
16	1.588	555	655	1.18	9.5	15.5	22.0		
16	1.570	555	660	1.19	8.0	14.0	20.0	1.10	0.80
16	1.570	550	645	1.17	9.5	15.5	21.5		
16	1.572	560	650	1.16	8.0	14.0	20.0		
16	1.576	550	655	1.19	10.0	16.5	20.5		
16	1.573	550	655	1.19	8.0	14.0	20.5		
16	1.577	540	645	1.19	10.0	15.0	21.0		
16	1.573	555	635	1.14	10.5	14.0	22.5		
16	1.579	560	655	1.17	8.0	15.0	21.0		
16	1.575	545	630	1.16	9.5	14.0	22.0		
16	1.579	550	655	1.19	8.0	15.0	22.5		
16	1.584	550	650	1.18	9.0	14.0	21.5		
16	1.588	550	650	1.18	10.0	15.5	22.0		
16	1.585	560	650	1.16	8.0	15.0	21.0		
16	1.589	565	655	1.16	9.5	16.0	20.5		
16	1.586	545	640	1.17	9.5	15.0	21.5		
16	1.587	545	645	1.18	10.0	15.5	21.5		
16	1.584	550	650	1.18	10.0	15.5	21.5		
16	1.582	550	655	1.19	10.0	15.5	21.5		
16	1.584	555	655	1.18	10.0	15.5	21.0		
16	1.586	550	650	1.18	10.0	15.5	21.5		
16	1.579	545	645	1.18	10.0	15.5	21.5		
16	1.579	550	645	1.17	10.0	15.5	21.5		
16	1.578	545	640	1.17	9.5	15.0	21.5		
16	1.577	550	645	1.17	10.0	15.5	21.5		
16	1.574	540	630	1.17	9.0	14.5	22.0		
16	1.576	545	645	1.18	10.0	15.5	21.5		
16	1.578	535	630	1.18	9.0	14.5	22.0		
16	1.579	545	635	1.17	9.0	14.5	21.5		
16	1.572	540	645	1.19	10.0	15.5	22.0		
16	1.576	550	645	1.17	10.0	15.5	21.5		
16	1.580	545	640	1.17	9.5	15.0	21.5		
16	1.586	545	650	1.19	10.0	15.5	21.5		
16	1.584	535	625	1.17	8.5	14.0	22.0		
16	1.582	545	640	1.17	9.5	15.0	21.5		
16	1.583	545	645	1.18	10.0	15.5	21.5		

16	1.587	535	620	1.16	8.5	14.0	22.0	1.10	0.95
16	1.584	545	645	1.18	10.0	15.5	21.5		
16	1.582	550	665	1.21	10.5	16.0	21.5		
16	1.586	545	650	1.19	10.0	15.5	21.5		
16	1.587	550	655	1.19	10.0	15.5	21.5		
16	1.582	545	650	1.19	10.0	15.5	21.5		
16	1.586	550	650	1.18	10.0	15.5	21.5		
16	1.583	545	640	1.17	9.5	15.0	21.5		
16	1.587	545	650	1.19	10.0	15.5	21.5		
16	1.582	535	620	1.16	8.5	14.0	22.0		
16	1.584	540	645	1.19	10.0	15.5	22.0		
16	1.587	535	620	1.16	8.5	14.0	22.0	1.05	0.95
16	1.588	540	630	1.17	9.0	14.5	22.0		
16	1.589	535	620	1.16	8.5	14.0	22.0		
16	1.582	535	630	1.18	9.0	14.5	22.0		
16	1.586	540	635	1.18	9.0	14.5	22.0		
16	1.584	535	630	1.18	9.0	14.5	22.0		
16	1.587	535	630	1.18	9.0	14.5	22.0		
16	1.586	545	650	1.19	10.0	15.5	21.5		
16	1.582	535	625	1.17	8.5	14.0	22.0		
16	1.587	535	635	1.19	9.0	14.5	22.0		
16	1.586	535	640	1.20	9.5	15.0	22.0		
16	1.583	550	650	1.18	10.0	15.5	21.5		
16	1.584	545	640	1.17	9.5	15.0	21.5		
16	1.583	550	650	1.18	10.0	15.5	21.5		
16	1.576	535	635	1.19	9.0	14.5	22.0		
16	1.584	550	650	1.18	10.0	15.5	21.5		
16	1.586	545	635	1.17	9.0	14.5	21.5		
16	1.584	545	650	1.19	10.0	15.5	21.5	1.10	0.80
16	1.585	540	645	1.19	10.0	15.5	22.0		
16	1.583	550	655	1.19	10.0	15.5	21.5		
16	1.584	550	645	1.17	10.0	15.5	21.5		
16	1.580	545	635	1.17	9.0	14.5	21.5		
16	1.584	550	640	1.16	9.5	15.0	21.5		
16	1.583	545	640	1.17	9.5	15.0	21.5		
16	1.587	550	650	1.18	10.0	15.5	21.5		
16	1.588	545	640	1.17	9.5	15.0	21.5		
16	1.590	540	635	1.18	9.0	14.5	22.0		
16	1.592	545	640	1.17	9.5	15.0	21.5		
16	1.587	540	630	1.17	9.0	14.5	22.0		
16	1.586	535	620	1.16	8.5	14.0	22.0	1.05	0.97
16	1.584	540	630	1.17	9.0	14.5	22.0		
16	1.582	535	625	1.17	8.5	14.0	22.0		
16	1.572	545	635	1.17	9.0	14.5	21.5		
16	1.576	535	620	1.16	8.5	14.0	22.0		
16	1.569	540	630	1.17	9.0	14.5	22.0		
16	1.574	535	625	1.17	8.5	14.0	22.0		
16	1.568	540	630	1.17	9.0	14.5	22.0		
16	1.573	540	635	1.18	9.0	14.5	22.0		
16	1.569	545	640	1.17	9.5	15.0	21.5		
16	1.572	540	630	1.17	9.0	14.5	22.0		
16	1.576	545	635	1.17	9.0	14.5	21.5		
16	1.572	550	645	1.17	10.0	15.5	21.5		
16	1.574	545	640	1.17	9.5	15.0	21.5		
16	1.573	550	635	1.15	9.0	14.5	21.5		
16	1.570	545	630	1.16	9.0	14.5	21.5		
16	1.575	550	635	1.15	9.0	14.5	21.5		
16	1.568	540	625	1.16	8.5	14.5	21.0		
16	1.570	550	640	1.16	9.5	15.5	22.0		
16	1.574	530	625	1.18	9.0	14.5	21.0	1.10	0.96
16	1.578	535	625	1.17	9.0	14.5	21.0		
16	1.571	530	620	1.17	8.5	14.0	20.5		
16	1.574	540	620	1.15	8.5	14.0	20.5		
16	1.560	555	640	1.15	9.5	15.5	22.0		
16	1.561	555	650	1.17	10.0	16.0	22.5		
16	1.583	550	635	1.15	9.5	15.5	22.0		
16	1.585	550	635	1.15	9.5	15.5	22.0		
16	1.587	535	625	1.17	9.0	14.5	21.0		
16	1.589	540	625	1.16	9.0	15.0	21.5		
16	1.594	550	635	1.15	9.5	15.5	22.0		
16	1.586	545	625	1.15	9.5	15.5	22.0		
16	1.592	555	640	1.15	10.0	16.0	22.5		
16	1.584	550	630	1.15	10.0	16.0	22.5		
16	1.589	555	640	1.15	9.5	15.5	22.0		
16	1.586	560	650	1.16	10.0	16.0	22.5		
16	1.585	550	640	1.16	9.5	15.5	22.0		

16	1.588	545	630	1.16	9.5	15.5	22.0	1.35	0.95
16	1.592	550	625	1.14	10.0	16.0	22.5		
16	1.585	545	630	1.16	9.0	14.5	21.0		
16	1.586	560	650	1.16	9.5	15.5	22.0		
16	1.585	560	645	1.15	9.5	15.5	22.0		
16	1.582	555	635	1.14	10.0	16.0	22.5		
16	1.589	550	630	1.15	10.0	16.0	22.5		
16	1.592	560	645	1.15	10.5	16.0	22.0		
16	1.586	560	650	1.16	10.5	16.5	22.5		
16	1.590	555	645	1.16	9.5	15.5	22.0		
16	1.581	560	640	1.14	9.5	15.5	22.0		
16	1.585	550	635	1.15	10.5	16.0	22.5		
16	1.583	560	650	1.16	10.5	16.5	23.0		
16	1.582	550	635	1.15	10.0	15.5	22.0		
16	1.586	565	650	1.15	10.0	16.0	22.5		
16	1.584	555	640	1.15	9.5	15.0	21.5		
16	1.585	560	645	1.15	9.5	15.5	22.0		
16	1.581	540	625	1.16	9.0	14.5	21.0		
16	1.587	550	635	1.15	9.0	14.5	21.0		
16	1.583	550	635	1.15	9.5	15.5	22.0		
16	1.588	555	640	1.15	9.5	16.0	22.5		
16	1.586	555	640	1.15	10.0	16.5	23.0		
16	1.587	555	640	1.15	9.5	15.5	22.0		
16	1.589	550	630	1.15	8.5	14.5	21.0		
16	1.594	550	635	1.15	8.5	14.5	21.0		
16	1.586	530	615	1.16	8.5	14.0	22.0		
16	1.592	535	620	1.16	8.0	14.0	22.0		
16	1.584	540	625	1.16	8.0	14.0	20.5		
16	1.589	525	615	1.17	9.0	14.0	20.5		
16	1.586	545	625	1.15	9.5	15.5	22.5		
16	1.585	560	650	1.16	10.0	16.0	22.5		
16	1.588	545	625	1.15	9.0	14.5	21.0		
16	1.592	550	635	1.15	9.0	14.5	21.0		
16	1.585	540	625	1.16	8.5	14.0	20.5		
16	1.586	540	625	1.16	8.5	14.0	20.5		
16	1.580	550	635	1.15	8.5	14.5	21.0		
16	1.574	545	625	1.15	8.5	14.0	20.5		
16	1.583	555	640	1.15	9.5	15.5	22.0		
16	1.579	550	635	1.15	9.0	14.5	21.0		
16	1.589	540	625	1.16	9.0	14.5	21.0		
16	1.586	560	650	1.16	9.5	16.0	22.5		
16	1.583	550	630	1.15	9.0	15.0	21.5		
16	1.580	550	630	1.15	9.0	14.5	21.0		
16	1.582	555	640	1.15	8.5	14.0	20.5		
16	1.581	550	640	1.16	9.0	14.5	21.0		
16	1.586	555	640	1.15	10.0	16.0	22.5		
16	1.582	560	655	1.17	10.0	16.0	22.5		
16	1.584	550	635	1.15	9.0	14.5	21.0		
16	1.581	545	625	1.15	9.0	14.5	21.0		
16	1.585	555	635	1.14	9.5	15.0	21.5		
16	1.582	540	620	1.15	9.5	15.5	22.0		
16	1.583	555	640	1.15	10.0	16.0	22.5		
16	1.585	550	635	1.15	9.5	15.0	22.0		
16	1.588	545	625	1.15	9.0	14.5	21.0		
16	1.589	540	625	1.16	9.5	15.0	21.5		
 593	593	550	635	1.15	9.0	14.5	21.0		
 593	593	540	620	1.15	8.5	14.0	20.5		
16	1.587	555	635	1.14	8.5	14.0	20.5		
16	1.581	550	630	1.15	9.0	14.5	21.0		
16	1.580	540	625	1.16	8.5	14.0	20.5		
16	1.577	535	620	1.16	9.0	14.5	21.0		
16	1.575	545	640	1.17	10.0	14.0	19.5		
16	1.576	560	660	1.18	8.0	16.0	20.0		
16	1.579	550	655	1.19	9.5	15.5	22.5		
16	1.577	545	645	1.18	8.0	14.0	21.0		
16	1.582	560	660	1.18	9.5	15.0	20.0		
16	1.574	545	645	1.18	8.0	14.0	21.0		
16	1.576	555	645	1.16	10.0	15.0	20.5		
16	1.573	545	635	1.17	8.0	16.0	21.0		
16	1.570	540	640	1.19	9.5	14.5	20.0		
16	1.574	550	645	1.17	8.0	14.5	21.0		
16	1.580	525	625	1.19	9.5	16.0	21.0		
16	1.574	540	645	1.19	8.0	15.0	21.5		
16	1.583	540	645	1.19	9.5	14.0	19.5		
16	1.577	560	665	1.19	8.0	16.5	21.0		
16	1.584	545	630	1.16	9.5	16.5	20.5		

16	1.577	545	645	1.18	8.0	15.0	20.5	1.20	0.78
16	1.586	555	645	1.16	9.0	14.0	20.5		
16	1.579	545	640	1.17	10.5	15.0	21.0		
16	1.583	545	630	1.16	8.0	14.0	20.0		
16	1.574	560	645	1.15	9.5	16.5	22.5		
16	1.586	540	625	1.16	9.0	14.0	21.0		
16	1.584	540	645	1.19	8.5	15.5	20.5		
16	1.588	530	620	1.17	10.0	14.0	22.5		
16	1.579	555	650	1.17	10.0	16.0	20.5		
16	1.584	555	645	1.16	8.0	15.0	22.5		
16	1.583	540	645	1.19	9.5	14.0	21.0		
16	1.584	550	645	1.17	8.0	15.5	20.5		
16	1.573	560	635	1.13	9.0	14.0	21.0		
16	1.584	560	660	1.18	8.5	15.0	20.5		
16	1.586	545	635	1.17	9.0	16.0	20.0		
16	1.574	560	625	1.12	9.0	16.0	21.0		
16	1.579	535	625	1.17	10.0	15.0	20.0		
16	1.584	535	630	1.18	10.0	14.0	21.5		
16	1.576	530	625	1.18	8.0	15.5	20.5		
16	1.578	535	630	1.18	9.5	14.0	21.0		
16	1.584	555	650	1.17	10.5	15.5	20.5		
16	1.580	550	650	1.18	8.0	14.5	20.5		
16	1.586	560	650	1.16	9.0	14.0	20.0		
16	1.582	555	630	1.14	8.0	15.0	21.0		
16	1.584	550	630	1.15	9.0	16.0	21.0		
16	1.588	550	655	1.19	10.5	15.0	20.5		
16	1.584	550	645	1.17	8.0	15.0	20.0		
16	1.583	550	625	1.14	9.0	14.0	22.5		
16	1.584	550	630	1.15	10.0	14.0	22.0		
16	1.586	555	630	1.14	8.5	16.5	20.0		
16	1.588	545	630	1.16	9.5	14.0	22.0		
16	1.590	545	640	1.17	8.0	15.5	20.0		
16	1.582	555	630	1.14	9.0	14.0	21.5		
16	1.592	550	615	1.12	10.0	16.5	21.0		
16	1.596	535	620	1.16	8.0	14.0	22.5		
16	1.594	525	635	1.21	9.5	15.5	22.5		
16	1.596	535	620	1.16	8.0	14.0	21.0		
16	1.580	550	635	1.15	9.5	16.5	22.5		
16	1.578	535	630	1.18	8.0	14.0	22.5		
16	1.584	560	650	1.16	10.0	15.5	22.0		
16	1.580	550	635	1.15	8.0	14.0	22.0		
16	1.583	550	640	1.16	9.5	15.5	22.5		
16	1.582	550	645	1.17	8.0	14.0	20.0		
16	1.584	530	630	1.19	9.0	16.5	22.0		
16	1.582	550	635	1.15	10.5	14.0	22.0		
16	1.584	540	635	1.18	8.0	16.5	22.0		
16	1.580	540	645	1.19	9.5	14.0	22.0		
16	1.585	555	650	1.17	8.0	15.5	20.0		
16	1.588	540	635	1.18	9.0	14.0	22.0		
16	1.582	545	630	1.16	8.0	15.5	22.0		
16	1.590	555	630	1.14	9.5	16.5	21.0		
16	1.583	540	620	1.15	8.5	14.0	20.5		
16	1.589	555	640	1.15	8.0	15.0	20.0		
16	1.584	540	635	1.18	9.0	14.0	20.0		
16	1.588	545	630	1.16	8.0	15.0	20.5		
16	1.586	530	630	1.19	9.0	16.0	22.5		
16	1.589	555	630	1.14	8.0	14.5	21.0		
16	1.582	555	645	1.16	9.5	16.0	21.5		
16	1.584	560	645	1.15	8.5	15.5	21.0		
16	1.583	545	645	1.18	10.0	14.5	21.0		
16	1.582	555	640	1.15	8.0	16.5	20.0		
16	1.584	545	650	1.19	10.5	15.0	21.5		
16	1.583	550	640	1.16	9.0	14.0	22.5		
16	1.586	530	625	1.18	8.0	16.0	22.0		
16	1.587	530	620	1.17	10.5	16.0	21.0		
16	1.576	545	635	1.17	9.0	14.5	21.5		
16	1.576	555	650	1.17	10.0	15.5	21.0		
16	1.574	550	640	1.16	9.5	15.0	21.5		
16	1.576	550	645	1.17	10.0	15.5	21.5		
16	1.578	550	640	1.16	9.5	15.0	21.5		
16	1.579	555	655	1.18	10.0	15.5	21.0		
16	1.572	545	635	1.17	9.0	14.5	21.5		
16	1.574	550	640	1.16	9.5	15.0	21.5		
16	1.576	545	635	1.17	9.0	14.5	21.5		
16	1.579	550	635	1.15	9.0	14.5	21.5		
16	1.574	550	635	1.15	9.0	14.5	21.5		

16	1.579	550	640	1.16	9.5	15.0	21.5		
16	1.578	550	645	1.17	10.0	15.5	21.5		
16	1.580	545	635	1.17	9.0	14.5	21.5		
16	1.576	545	640	1.17	9.5	15.0	22.0		
16	1.574	545	635	1.17	9.0	14.5	21.5		
16	1.572	545	630	1.16	9.0	14.5	22.0		
16	1.576	545	635	1.17	9.0	14.5	21.5		
16	1.578	550	640	1.16	9.5	15.0	21.5		
16	1.577	550	635	1.15	9.0	14.5	21.5		
16	1.579	550	635	1.15	9.0	14.5	21.5		
16	1.578	545	635	1.17	9.0	14.5	22.0		
16	1.574	550	640	1.16	9.5	15.0	21.5		
16	1.576	545	635	1.17	9.0	14.5	21.5		
16	1.572	545	630	1.16	9.0	14.5	21.5		
16	1.573	535	620	1.16	8.5	14.0	22.0		
16	1.579	545	635	1.17	9.0	14.5	21.5		
16	1.578	545	640	1.17	9.5	15.0	21.5		
16	1.577	540	630	1.17	9.0	14.5	22.0		
16	1.579	535	620	1.16	8.5	14.0	22.0		
16	1.574	535	625	1.17	8.5	14.0	22.0		
16	1.576	550	645	1.17	10.0	15.5	21.5		
16	1.572	540	630	1.17	9.0	14.5	22.0		
16	1.570	540	635	1.18	9.0	14.5	22.0		
16	1.579	550	640	1.16	9.5	15.0	21.5		
16	1.576	545	635	1.17	9.0	14.5	22.0		
16	1.576	535	635	1.19	9.5	15.5	22.0		
16	1.574	555	640	1.15	10.0	16.0	21.0		
16	1.578	540	620	1.15	9.0	15.0	22.0		
16	1.576	550	635	1.15	9.5	15.5	21.5		
16	1.572	545	625	1.15	9.0	15.0	21.5		
16	1.578	545	620	1.14	8.5	14.5	22.0		
16	1.579	535	615	1.15	8.5	14.5	22.5		
16	1.574	555	625	1.13	9.0	15.0	21.0		
16	1.579	540	615	1.14	8.5	14.5	22.0		
16	1.574	535	615	1.15	8.5	14.5	23.0		
16	1.578	535	610	1.14	8.5	14.5	22.5		
16	1.577	540	620	1.15	9.0	15.0	22.5		
16	1.579	535	620	1.16	9.0	15.0	22.0		
16	1.579	530	595	1.12	8.0	14.0	22.5		
16	1.580	535	600	1.12	8.0	14.0	23.0		
16	1.579	535	605	1.13	8.0	14.0	22.0		
16	1.581	545	620	1.14	8.5	14.5	22.0		
16	1.586	545	625	1.15	9.0	15.0	22.0		
16	1.574	545	620	1.14	8.5	14.5	22.0		
16	1.586	550	630	1.15	9.0	15.0	21.5		
16	1.574	545	625	1.15	9.0	15.0	22.0		
16	1.573	540	620	1.15	8.5	14.5	22.0		
16	1.572	540	620	1.15	8.5	14.5	22.5		
16	1.581	555	635	1.14	9.5	15.5	21.5		
16	1.576	550	640	1.16	9.5	15.0	21.5		
16	1.574	540	630	1.17	9.0	14.5	22.0		
16	1.579	545	635	1.17	9.0	14.5	22.0		
16	1.578	540	625	1.16	8.5	14.0	22.0		
16	1.572	535	620	1.16	8.5	14.0	22.0		
16	1.579	540	630	1.17	9.0	14.5	22.0		
16	1.579	545	635	1.17	9.0	14.5	21.5		
16	1.580	540	625	1.16	8.5	14.0	22.0		
16	1.565	560	655	1.17	10.5	16.5	22.5		
16	1.565	560	650	1.16	10.0	16.0	22.0		
16	1.567	550	635	1.15	9.5	16.0	22.0		
16	1.566	550	640	1.16	9.5	16.0	22.0		
16	1.569	555	655	1.18	10.0	16.5	22.5		
16	1.567	555	640	1.15	10.0	16.5	22.5		
16	1.572	550	640	1.16	9.0	15.0	21.0		
16	1.571	555	650	1.17	9.5	16.0	22.0		
16	1.575	545	630	1.16	9.0	15.0	21.0		
16	1.573	550	635	1.15	9.5	16.0	22.0		
16	1.570	560	650	1.16	10.5	16.5	22.5		
16	1.566	560	655	1.17	10.0	16.5	22.5		
16	1.572	560	640	1.14	9.5	15.5	22.0		
16	1.569	550	640	1.16	9.0	15.0	21.0		
16	1.574	550	640	1.16	9.5	15.5	21.5		
16	1.570	550	635	1.15	9.5	15.5	21.5		
16	1.577	560	650	1.16	10.0	16.5	22.5		
16	1.573	555	645	1.16	9.5	15.5	21.5		
16	1.575	555	640	1.15	9.5	16.0	22.0		

16	1.572	555	645	1.16	9.5	16.0	22.0	1.15	1.00
16	1.574	560	655	1.17	10.0	16.0	22.0		
16	1.578	550	635	1.15	9.0	15.0	21.0		
16	1.579	560	655	1.17	10.5	16.5	22.5		
16	1.573	560	655	1.17	10.0	16.5	22.5		
16	1.571	545	630	1.16	9.5	15.5	21.5		
16	1.576	545	630	1.16	9.5	15.5	21.5		
16	1.575	555	640	1.15	10.0	16.0	22.0		
16	1.580	555	640	1.15	9.5	16.0	22.0		
16	1.576	550	640	1.16	9.5	15.5	21.5		
16	1.582	545	630	1.16	9.0	15.0	21.5		
16	1.577	565	655	1.16	10.0	16.5	22.5		
16	1.573	555	645	1.16	9.5	15.5	22.0		
16	1.598	550	630	1.15	9.0	14.5	21.0		
16	1.595	560	640	1.14	10.0	16.5	22.5		
16	1.575	555	640	1.15	10.0	16.5	22.5		
16	1.592	555	655	1.18	10.5	16.5	23.0		
16	1.599	550	635	1.15	9.5	16.0	22.0		
16	1.595	550	635	1.15	10.0	16.5	22.5		
16	1.585	560	650	1.16	9.5	16.0	22.5		
16	1.583	555	650	1.17	10.5	16.5	23.0		
16	1.577	555	640	1.15	9.5	15.5	22.0		
16	1.573	540	625	1.16	9.0	14.5	21.0		
16	1.579	560	650	1.16	9.5	16.0	22.5		
16	1.577	550	635	1.15	9.5	16.0	22.0		
16	1.583	550	635	1.15	9.0	15.5	22.0		
16	1.581	555	640	1.15	9.0	15.0	21.5		
16	1.583	555	640	1.15	9.5	16.0	22.5		
16	1.587	540	630	1.17	9.0	15.0	21.5		
16	1.581	550	635	1.15	10.0	16.5	23.0		
16	1.592	545	635	1.17	9.5	15.5	22.0		
16	1.584	550	635	1.15	9.5	16.0	22.5		
16	1.590	555	640	1.15	9.5	16.0	22.5		
16	1.586	555	640	1.15	9.0	15.0	21.5		
16	1.593	550	635	1.15	9.0	15.0	21.0		
16	1.588	560	655	1.17	10.0	16.5	23.0		
16	1.584	560	655	1.17	9.5	16.0	22.5		
16	1.581	550	635	1.15	9.5	16.0	22.5		
16	1.578	555	645	1.16	9.0	15.5	22.0		
16	1.582	560	650	1.16	9.0	15.5	22.0		
16	1.591	550	640	1.16	9.5	15.5	22.0		
16	1.587	555	645	1.16	9.0	15.0	21.0		
16	1.574	550	640	1.16	9.0	15.0	21.0		
16	1.589	550	645	1.17	9.0	15.0	21.5		
16	1.584	540	625	1.16	8.5	14.5	20.5		
16	1.585	540	625	1.16	8.5	14.0	20.5		
16	1.582	550	640	1.16	9.0	15.0	21.5		
16	1.587	550	635	1.15	9.5	15.5	22.0		
16	1.585	555	640	1.15	9.5	16.0	22.5		
16	1.581	545	630	1.16	8.5	14.0	20.5		
16	1.577	535	625	1.17	9.0	15.5	22.0		
16	1.580	560	650	1.16	9.0	15.0	21.0		
16	1.579	550	635	1.15	9.5	15.5	21.5		
16	1.589	550	635	1.15	9.0	15.0	21.0		
16	1.584	555	630	1.14	9.5	16.0	22.0		
16	1.576	555	640	1.15	8.5	14.0	20.5		
16	1.578	540	630	1.17	9.0	15.0	21.0		
16	1.579	550	635	1.15	9.0	15.0	21.0		
16	1.575	550	635	1.15	9.5	15.5	21.5		
16	1.583	535	630	1.18	10.0	16.5	22.5		
16	1.589	540	630	1.17	10.5	17.0	23.0		
16	1.600	540	630	1.17	9.5	15.0	22.0		
16	1.603	550	640	1.16	10.0	16.0	22.5		
16	1.580	540	635	1.18	10.5	17.0	23.0		
16	1.576	550	640	1.16	9.0	14.5	21.5		
16	1.590	550	640	1.16	8.5	14.0	21.0		
16	1.589	545	630	1.16	10.0	16.5	22.5		
16	1.586	545	640	1.17	9.5	16.0	22.0		
16	1.584	540	640	1.19	9.0	15.5	22.0		
16	1.586	545	650	1.19	9.5	15.0	22.0		
16	1.586	540	635	1.18	10.5	16.5	23.0		
16	1.590	555	640	1.15	8.5	14.0	21.0		
16	1.588	555	645	1.16	9.0	14.5	21.5		
16	1.591	545	645	1.18	10.0	16.0	22.5		
16	1.591	545	650	1.19	9.5	15.0	22.0		
16	1.580	530	620	1.17	8.5	14.0	21.0		

16	1.578	540	630	1.17	9.5	15.5	22.0	1.20	0.70
16	1.576	540	635	1.18	10.5	17.0	23.0		
16	1.580	555	645	1.16	9.0	14.5	21.5		
16	1.579	535	625	1.17	9.0	14.5	21.5		
16	1.575	530	625	1.18	8.5	14.0	21.0		
16	1.581	565	655	1.16	8.5	14.0	21.0		
16	1.577	560	650	1.16	8.0	13.5	20.5		
16	1.583	555	650	1.17	8.5	14.0	21.0		
16	1.580	550	640	1.16	10.0	16.0	22.5		
16	1.586	550	640	1.16	9.5	15.0	22.0		
16	1.584	540	635	1.18	10.0	15.5	22.5		
16	1.588	545	640	1.17	10.5	17.0	23.0		
16	1.585	545	640	1.17	9.5	14.5	22.0		
16	1.590	535	630	1.18	10.0	16.0	22.5		
16	1.587	555	650	1.17	8.5	14.0	21.0		
16	1.591	540	635	1.18	10.0	17.0	23.0		
16	1.589	550	645	1.17	9.0	14.5	21.5		
16	1.593	545	640	1.17	9.5	15.0	22.0		
16	1.590	555	650	1.17	9.0	14.5	21.5		
16	1.595	560	650	1.16	8.5	13.5	20.5		
16	1.592	565	655	1.16	8.0	13.5	20.0		
16	1.575	560	655	1.17	8.5	14.0	21.0		
16	1.579	565	660	1.17	8.0	13.5	20.5		
16	1.578	555	645	1.16	8.5	14.0	21.0		
16	1.580	560	655	1.17	9.0	14.0	21.0		
16	1.582	545	640	1.17	8.0	13.5	20.0		
16	1.585	555	650	1.17	8.5	14.5	21.0		
16	1.584	545	640	1.17	10.0	16.0	22.5		
16	1.588	550	645	1.17	9.5	15.0	22.0		
16	1.582	530	620	1.17	8.5	14.0	21.0		
16	1.578	530	615	1.16	8.0	13.5	20.0		
16	1.584	545	635	1.17	9.5	15.5	22.0		
16	1.581	540	630	1.17	10.0	16.0	22.5		
16	1.587	540	635	1.18	10.0	16.0	22.5		
16	1.584	535	630	1.18	9.0	14.5	21.5		
16	1.589	550	655	1.19	8.5	14.0	21.0		
16	1.585	560	655	1.17	9.0	14.5	21.5		
16	1.590	545	640	1.17	10.0	16.5	22.5		
16	1.585	535	635	1.19	9.5	15.0	22.0		
16	1.592	540	630	1.17	9.0	14.5	21.5		
16	1.590	545	640	1.17	10.0	16.0	22.5		
16	1.584	535	640	1.20	9.5	15.5	22.0		
16	1.582	535	630	1.18	9.0	15.0	22.0		
16	1.587	540	630	1.17	10.0	16.0	22.5		
16	1.583	560	650	1.16	9.5	15.5	22.0		
16	1.591	550	635	1.15	9.5	15.5	22.0		
16	1.588	550	635	1.15	10.0	16.5	22.5		
16	1.593	550	635	1.15	9.0	14.5	21.5		
16	1.590	560	645	1.15	8.5	14.0	21.0		
16	1.595	555	640	1.15	8.5	14.0	21.0		
16	1.592	550	635	1.15	9.0	15.0	22.0		
16	1.583	555	650	1.17	9.5	15.5	22.0		
16	1.580	560	650	1.16	10.0	16.0	22.5		
16	1.584	540	640	1.19	9.5	15.5	22.0		
16	1.583	555	660	1.19	9.0	14.0	20.0		
16	1.588	540	630	1.17	10.0	16.0	22.5		
16	1.584	545	650	1.19	10.0	16.5	22.5		
16	1.586	545	640	1.17	9.5	15.0	21.5		
16	1.587	545	635	1.17	9.0	14.5	21.5		
16	1.584	550	640	1.16	9.5	15.0	21.5		
16	1.582	550	645	1.17	10.0	15.5	21.5		
16	1.584	555	650	1.17	10.0	15.5	21.0		
16	1.586	550	645	1.17	10.0	15.5	21.5		
16	1.579	545	635	1.17	9.0	14.5	22.0		
16	1.579	550	645	1.17	10.0	15.5	21.5		
16	1.578	545	640	1.17	9.5	15.0	21.5		
16	1.577	550	645	1.17	10.0	15.5	21.5		
16	1.574	540	630	1.17	9.0	14.5	22.0		
16	1.576	545	635	1.17	9.0	14.5	22.0		
16	1.578	535	620	1.16	8.5	14.0	22.0		
16	1.579	545	635	1.17	9.0	14.5	21.5		
16	1.572	540	630	1.17	9.0	15.5	22.0		
16	1.576	550	645	1.17	10.0	15.5	21.5		
16	1.580	545	640	1.17	9.5	15.0	21.5		
16	1.586	545	640	1.17	9.5	15.5	21.5		
16	1.584	535	625	1.17	8.5	14.0	22.0		

16	1.582	545	640	1.17	9.5	15.0	21.5	1.40	0.96
16	1.583	545	635	1.17	9.5	15.5	21.5		
16	1.587	535	620	1.16	8.5	14.0	22.0		
16	1.584	545	635	1.17	9.0	14.5	21.5		
16	1.582	550	650	1.18	10.0	15.5	21.5		
16	1.586	545	635	1.17	9.0	14.5	21.5		
16	1.587	550	645	1.17	10.0	15.5	21.5		
16	1.582	545	635	1.17	9.5	15.0	21.5		
16	1.586	550	640	1.16	9.5	15.0	21.5		
16	1.583	545	640	1.17	9.5	15.0	21.5		
16	1.587	545	635	1.17	9.0	14.5	21.5		
16	1.582	535	620	1.16	8.5	14.0	22.0		
16	1.584	540	635	1.18	9.0	14.5	22.0		
16	1.587	535	620	1.16	8.5	14.0	22.0		
16	1.588	540	630	1.17	9.0	14.5	22.0		
16	1.589	535	620	1.16	8.5	14.0	22.0		
16	1.582	535	620	1.16	8.5	14.0	22.0		
16	1.586	540	625	1.16	9.0	14.5	22.0		
16	1.584	535	620	1.16	8.5	14.0	22.0		
16	1.587	535	615	1.15	8.5	14.0	22.0		
16	1.586	545	635	1.17	9.0	14.5	21.5		
16	1.582	535	625	1.17	8.5	14.0	22.0		
16	1.587	535	630	1.18	9.0	14.5	22.0		
16	1.586	535	625	1.17	9.0	14.5	22.0		
16	1.583	550	640	1.16	9.5	15.0	21.5		
16	1.584	545	640	1.17	9.5	15.0	21.5		
16	1.583	550	650	1.18	10.0	15.5	21.5		
16	1.576	535	620	1.16	8.5	14.0	22.0		
16	1.584	550	640	1.16	9.5	14.5	21.5		
16	1.586	545	635	1.17	9.0	14.5	21.5		
16	1.584	545	640	1.17	9.5	15.0	21.5		
16	1.585	540	635	1.18	9.0	14.5	22.0		
16	1.583	550	645	1.17	10.0	15.5	21.5		
16	1.584	550	645	1.17	10.0	15.5	21.5		
16	1.580	545	635	1.17	9.0	14.5	22.0		
16	1.584	550	640	1.16	9.5	15.0	21.5		
16	1.583	545	640	1.17	9.5	15.0	21.5		
16	1.587	550	650	1.18	10.0	15.5	21.5		
16	1.588	545	640	1.17	9.5	15.0	21.5		
16	1.590	540	635	1.18	9.0	14.5	22.0		
16	1.592	545	640	1.17	9.5	15.0	21.5		
16	1.587	540	630	1.17	9.0	14.5	22.0		
16	1.586	535	620	1.16	8.5	14.0	22.0		
16	1.584	540	630	1.17	9.0	14.5	22.0		
16	1.582	535	625	1.17	8.5	14.0	22.0		
16	1.572	545	635	1.17	9.0	14.5	21.5		
16	1.576	535	620	1.16	8.5	14.0	22.0		
16	1.569	540	630	1.17	9.0	14.5	22.0		
16	1.574	535	625	1.17	8.5	14.0	22.0		
16	1.568	540	630	1.17	9.0	14.5	22.0		
16	1.573	540	635	1.18	9.0	14.5	22.0		
16	1.569	545	640	1.17	9.5	15.0	21.5		
16	1.572	540	630	1.17	9.0	14.5	22.0		
16	1.576	545	635	1.17	9.0	14.5	21.5		
16	1.572	550	645	1.17	10.0	15.5	21.5		
16	1.574	545	640	1.17	9.5	15.0	21.5		
16	1.573	550	635	1.15	9.0	14.5	21.5		
16	1.570	545	630	1.16	9.0	14.5	21.5		
16	1.575	550	635	1.15	9.0	14.5	21.5		
16	1.572	545	630	1.16	9.0	14.0	20.0		
16	1.572	550	635	1.15	8.5	15.0	21.0		
16	1.582	555	650	1.17	9.5	14.0	22.5		
16	1.588	555	645	1.16	8.0	14.5	20.0		
16	1.592	535	625	1.17	9.0	15.0	21.0		
16	1.582	540	630	1.17	8.0	16.0	21.0		
16	1.589	555	625	1.13	9.0	14.0	20.0		
16	1.584	550	650	1.18	9.5	15.0	20.0		
16	1.576	535	635	1.19	8.0	14.5	20.5		
16	1.573	555	660	1.19	9.0	15.0	20.5		
16	1.579	545	635	1.17	10.0	14.0	21.0		
16	1.578	540	625	1.16	8.0	15.5	20.0		
16	1.576	545	620	1.14	9.5	16.0	21.0		
16	1.567	550	630	1.15	8.0	14.0	21.5		
16	1.577	560	650	1.16	9.5	15.5	21.0		
16	1.568	560	635	1.13	8.0	14.0	20.0		
16	1.584	555	650	1.17	9.5	15.0	20.5		

16	1.578	555	645	1.16	8.0	14.0	20.5	1.15	0.85
16	1.588	560	650	1.16	9.0	15.0	21.5		
16	1.566	550	640	1.16	10.0	16.0	20.5		
16	1.589	550	650	1.18	8.0	15.0	22.5		
16	1.570	545	650	1.19	10.0	14.0	20.5		
16	1.591	545	645	1.18	8.0	15.5	19.5		
16	1.582	535	630	1.18	9.0	16.0	20.5		
16	1.581	545	650	1.19	8.0	15.5	20.0		
16	1.572	545	650	1.19	9.5	14.0	22.5		
16	1.584	545	645	1.18	10.0	14.5	22.5		
16	1.574	540	640	1.19	10.0	15.0	20.5		
16	1.580	555	640	1.15	8.0	14.0	21.0		
16	1.574	550	650	1.18	9.5	15.5	20.5		
16	1.582	560	660	1.18	8.0	16.0	21.0		
16	1.573	555	660	1.19	9.5	14.0	20.0		
16	1.584	560	645	1.15	8.0	15.5	21.5		
16	1.577	560	655	1.17	9.5	14.0	20.5		
16	1.585	560	660	1.18	8.0	15.0	20.5		
16	1.583	560	650	1.16	9.5	16.0	20.5		
16	1.588	540	630	1.17	8.0	14.0	20.5		
16	1.579	535	635	1.19	9.5	15.5	21.5		
16	1.588	540	645	1.19	8.0	14.0	21.0		
16	1.573	545	635	1.17	10.0	15.5	20.5		
16	1.580	550	635	1.15	10.0	14.0	22.5		
16	1.570	540	645	1.19	8.0	15.0	22.0		
16	1.582	555	650	1.17	9.5	14.0	21.0		
16	1.572	555	635	1.14	8.0	15.0	20.5		
16	1.584	545	635	1.17	9.5	16.0	20.5		
16	1.574	560	645	1.15	8.0	15.5	20.5		
16	1.585	545	645	1.18	9.0	14.0	21.0		
16	1.576	545	650	1.19	10.0	15.0	20.5		
16	1.586	555	650	1.17	8.0	14.0	22.0		
16	1.576	550	640	1.16	9.0	15.5	20.5		
16	1.586	545	635	1.17	8.0	14.0	21.0		
16	1.573	535	635	1.19	9.5	14.5	20.5		
16	1.577	540	630	1.17	8.0	16.5	21.0		
16	1.568	535	630	1.18	10.0	14.0	20.0		
16	1.577	540	640	1.19	8.0	15.0	22.0		
16	1.568	535	635	1.19	9.5	14.0	21.0		
16	1.573	555	640	1.15	8.0	15.0	20.0		
16	1.569	535	630	1.18	9.5	14.0	21.0		
16	1.574	545	640	1.17	8.0	15.0	22.5		
16	1.569	550	645	1.17	9.5	14.0	22.0		
16	1.575	525	625	1.19	8.0	15.5	20.0		
16	1.570	530	620	1.17	10.0	14.0	20.5		
16	1.576	535	625	1.17	8.0	16.0	21.0		
16	1.572	550	630	1.15	9.5	14.0	23.0		
16	1.577	545	630	1.16	8.0	15.5	22.5		
16	1.573	530	625	1.18	9.5	14.0	22.5		
16	1.578	530	620	1.17	8.0	15.5	20.0		
16	1.570	555	645	1.16	9.5	14.5	21.0		
16	1.580	560	650	1.16	8.0	15.0	20.5		
16	1.573	560	650	1.16	9.5	14.0	21.0		
16	1.582	555	650	1.17	8.0	16.0	21.0		
16	1.576	550	655	1.19	10.0	16.0	21.0		
16	1.582	550	655	1.19	8.0	15.5	22.0		
16	1.580	550	650	1.18	9.5	14.0	21.0		
16	1.572	560	645	1.15	8.0	16.5	21.0		
16	1.573	550	645	1.17	9.5	15.5	22.5		
16	1.573	560	655	1.17	8.0	16.5	22.0		
16	1.566	560	655	1.17	9.5	14.0	21.5		
16	1.580	550	650	1.18	8.0	15.0	21.0		
16	1.572	555	645	1.16	10.0	15.5	22.0		
16	1.591	545	635	1.17	10.5	17.0	23.0		
16	1.585	540	635	1.18	10.0	16.0	22.5		
16	1.584	550	635	1.15	9.5	15.5	22.0		
16	1.581	565	655	1.16	8.5	14.0	21.0		
16	1.556	555	650	1.17	8.0	13.5	20.5		
16	1.552	565	655	1.16	8.0	13.0	20.0		
16	1.560	555	645	1.16	9.0	14.5	21.5		
16	1.560	545	640	1.17	9.5	15.0	22.0		
16	1.564	540	640	1.19	10.0	15.5	22.5		
16	1.562	565	650	1.15	9.0	14.5	21.5		
16	1.571	535	625	1.17	9.0	15.0	22.0		
16	1.568	540	625	1.16	10.0	16.0	22.5		
16	1.574	530	600	1.13	8.5	13.5	20.5		

16	1.569	530	605	1.14	8.5	14.0	21.0	1.20	0.70
16	1.577	535	610	1.14	8.0	13.0	20.0		
16	1.572	530	600	1.13	8.0	13.5	20.0		
16	1.579	535	630	1.18	9.5	15.0	22.0		
16	1.576	530	625	1.18	9.0	14.5	21.5		
16	1.575	540	630	1.17	10.0	16.5	22.5		
16	1.572	550	640	1.16	9.0	14.5	21.5		
16	1.579	550	645	1.17	8.5	14.0	21.0		
16	1.576	560	645	1.15	8.0	13.5	20.5		
16	1.581	540	630	1.17	10.0	16.0	22.5		
16	1.578	550	640	1.16	9.5	15.5	22.0		
16	1.583	535	625	1.17	10.5	17.0	23.0		
16	1.580	535	625	1.17	10.0	16.5	22.5		
16	1.585	535	620	1.16	9.0	14.5	21.5		
16	1.582	540	630	1.17	10.0	16.0	22.5		
16	1.586	540	625	1.16	9.5	15.5	22.0		
16	1.583	545	635	1.17	10.5	17.0	23.0		
16	1.588	535	625	1.17	9.5	15.5	22.0		
16	1.584	555	630	1.14	9.0	14.5	21.5		
16	1.589	555	645	1.16	8.5	14.0	21.0		
16	1.587	560	655	1.17	8.5	14.0	21.0		
16	1.591	545	640	1.17	10.0	17.0	22.5		
16	1.587	555	650	1.17	8.0	14.0	21.0		
16	1.592	540	640	1.19	10.0	16.0	22.5		
16	1.590	550	645	1.17	9.5	15.5	22.0		
16	1.595	525	620	1.18	8.0	14.0	20.0		
16	1.591	530	615	1.16	8.0	13.5	20.0		
16	1.584	545	635	1.17	9.0	15.0	22.0		
16	1.581	540	625	1.16	9.0	14.5	21.5		
16	1.586	535	625	1.17	9.5	15.0	22.0		
16	1.583	550	650	1.18	10.0	16.0	22.5		
16	1.588	560	650	1.16	9.0	14.5	21.5		
16	1.584	530	615	1.16	8.5	14.0	21.0		
16	1.589	540	635	1.18	10.5	17.0	23.0		
16	1.587	535	630	1.18	10.0	16.0	22.5		
16	1.590	545	645	1.18	9.5	15.5	22.0		
16	1.585	550	645	1.17	9.0	14.5	21.5		
16	1.583	560	655	1.17	8.5	14.0	21.0		
16	1.577	560	655	1.17	9.5	15.0	22.0		
16	1.582	560	650	1.16	8.0	13.5	20.5		
16	1.579	555	645	1.16	8.5	14.0	21.0		
16	1.584	550	645	1.17	9.0	14.5	21.5		
16	1.580	550	645	1.17	9.0	15.0	22.0		
16	1.586	540	630	1.17	9.5	16.0	22.5		
16	1.583	545	635	1.17	10.0	17.0	23.0		
16	1.589	545	635	1.17	9.5	15.0	22.0		
16	1.586	550	650	1.18	10.5	17.0	23.0		
16	1.580	560	660	1.18	8.5	14.0	21.0		
16	1.577	560	655	1.17	8.0	13.5	20.5		
16	1.579	560	655	1.17	9.0	14.5	21.5		
16	1.575	565	650	1.15	9.5	15.0	22.0		
16	1.581	555	660	1.19	10.0	16.0	22.5		
16	1.576	565	660	1.17	8.5	13.5	20.5		
16	1.583	560	650	1.16	9.5	15.0	22.0		
16	1.580	560	650	1.16	8.5	14.0	21.0		
16	1.576	550	645	1.17	10.0	16.0	22.5		
16	1.580	555	650	1.17	8.5	13.5	21.0		
16	1.578	540	640	1.19	10.5	17.0	23.0		
16	1.582	555	650	1.17	9.0	14.5	21.5		
16	1.583	540	635	1.18	9.5	15.5	22.0		
16	1.585	565	655	1.16	9.0	14.5	21.5		
16	1.587	540	640	1.19	10.0	17.0	23.0		
16	1.591	560	660	1.18	9.0	14.5	21.5		
16	1.586	545	640	1.17	9.5	15.0	21.5		
16	1.584	550	650	1.18	10.0	15.5	21.5		
16	1.587	535	620	1.16	8.5	14.0	22.0		
16	1.586	550	640	1.16	9.5	14.5	21.5		
16	1.582	545	635	1.17	9.0	14.5	21.5		
16	1.584	545	640	1.17	9.5	15.0	21.5		
16	1.586	540	635	1.18	9.0	14.5	22.0		
16	1.583	550	645	1.17	10.0	15.5	21.5		
16	1.587	550	645	1.17	10.0	15.5	21.5		
16	1.582	545	635	1.17	9.0	14.5	22.0		
16	1.584	550	640	1.16	9.5	15.0	21.5		
16	1.586	545	640	1.17	9.5	15.0	21.5		
16	1.588	550	650	1.18	10.0	15.5	21.5		

16	1.589	545	640	1.17	9.5	15.0	21.5		
16	1.590	540	635	1.18	9.0	14.5	22.0		
16	1.587	545	640	1.17	9.5	15.0	21.5		
16	1.584	540	630	1.17	9.0	14.5	22.0	1.30	0.95
16	1.586	535	620	1.16	8.5	14.0	22.0		
16	1.582	540	630	1.17	9.0	14.5	22.0		
16	1.589	535	625	1.17	8.5	14.0	22.0		
16	1.588	545	635	1.17	9.0	14.5	21.5		
16	1.587	535	620	1.16	8.5	14.0	22.0		
16	1.586	540	630	1.17	9.0	14.5	22.0		
16	1.582	535	625	1.17	8.5	14.0	22.0		
16	1.584	540	630	1.17	9.0	14.5	22.0		
16	1.589	540	635	1.18	9.0	14.5	22.0		
16	1.590	545	640	1.17	9.5	15.0	21.5		
16	1.591	540	630	1.17	9.0	14.5	22.0		
16	1.586	545	635	1.17	9.0	14.5	21.5		
16	1.590	550	645	1.17	10.0	15.5	21.5		
16	1.587	545	640	1.17	9.5	15.0	21.5		
16	1.588	550	635	1.15	9.0	14.5	21.5		
16	1.586	545	630	1.16	9.0	14.5	21.5		
16	1.584	550	635	1.15	9.0	14.5	21.5		
16	1.591	545	630	1.16	9.0	14.0	21.5		
16	1.593	550	635	1.15	8.5	15.0	21.5		