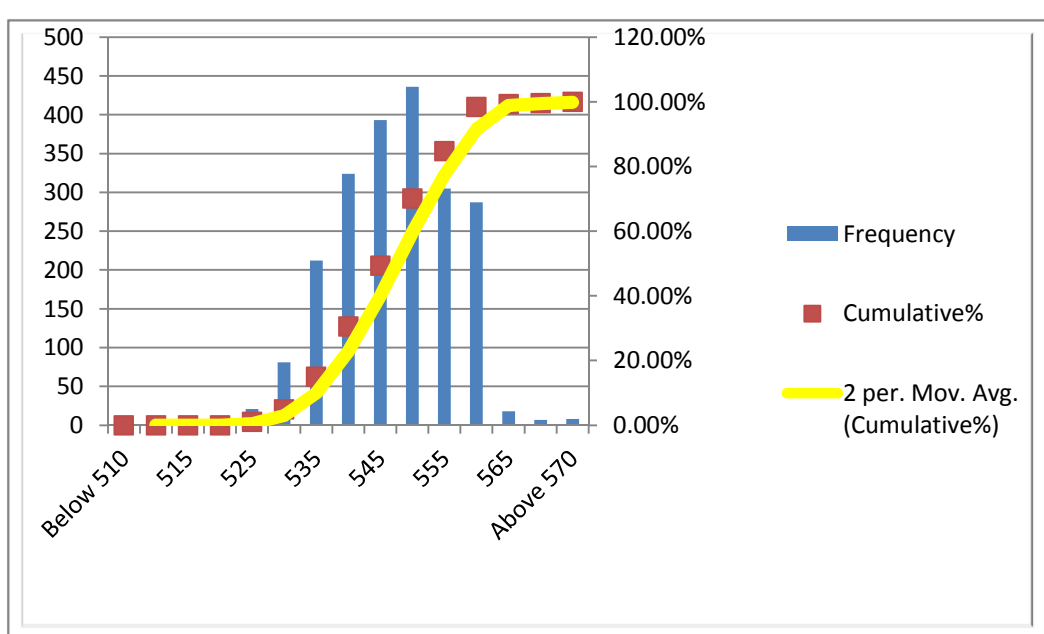


Campaign Length: 04.07.16 to 16.07.16
 Total Production: 21757.490 MT
 Billet Rolled: BIS-84, SAL-251, SML-235,NLM-250, ISP-252
 Product: Xtreme 500W (2x16 mm)

YIELD STRENGTH	
Mean	547.428
Median	550
Mode	550
Std. Dev.	9.289
Min	525
Max	610
Count	2092

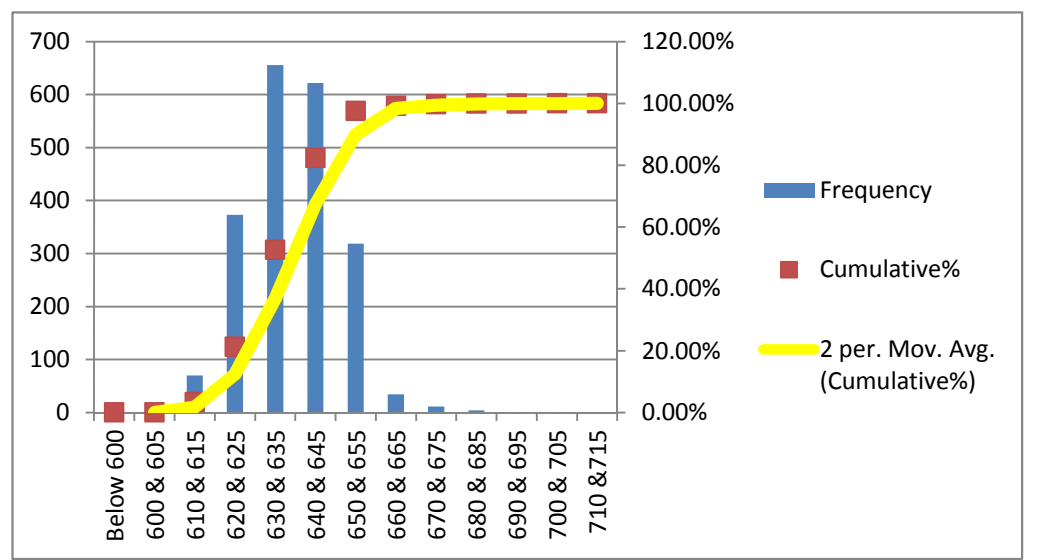
Bin	Frequency	%	Cumulative%
Below 510	0	0.00%	0.00%
510	0	0.00%	0.00%
515	0	0.00%	0.00%
520	0	0.00%	0.00%
525	21	1.00%	1.00%
530	81	3.87%	4.88%
535	212	10.13%	15.01%
540	324	15.49%	30.50%
545	393	18.79%	49.28%
550	436	20.84%	70.12%
555	305	14.58%	84.70%
560	287	13.72%	98.42%
565	18	0.86%	99.28%
570	7	0.33%	99.62%
Above 570	8	0.38%	100.00%
Total	2092		



MINIMUM REQUIREMENTS
 As per ISO 6935-2: 500 Mpa
 As per ASTM A-615: 420 Mpa

ULTIMATE STRENGTH	
Mean	636.791
Median	635
Mode	640
Std. Dev.	11.33
Min	600
Max	700
Count	2092

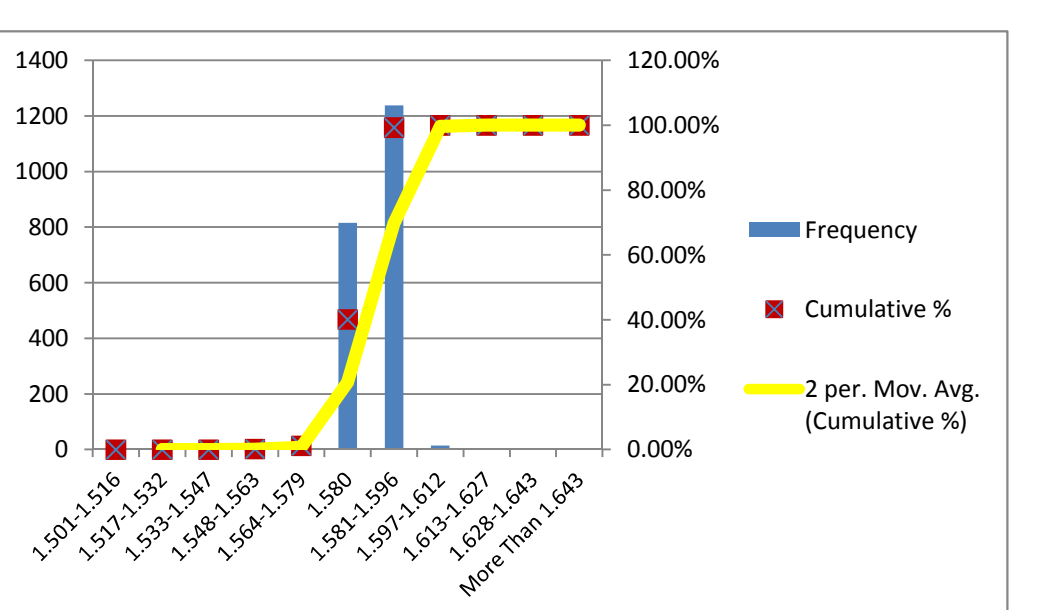
Bin	Frequency	%	Cumulative%
Below 600	0	0.00%	0.00%
600 & 605	1	0.05%	0.05%
610 & 615	70	3.35%	3.39%
620 & 625	373	17.83%	21.22%
630 & 635	656	31.38%	52.58%
640 & 645	622	29.73%	82.31%
650 & 655	319	15.25%	97.56%
660 & 665	34	1.63%	99.19%
670 & 675	11	0.53%	99.71%
680 & 685	4	0.19%	99.90%
690 & 695	1	0.05%	99.95%
700 & 705	1	0.05%	100.00%
710 & 715	0	0.00%	100.00%
720 & 725	0	0.00%	100.00%
730 & 735	0	0.00%	100.00%
Above 735	0	0.00%	100.00%
Total	2092		



MINIMUM REQUIREMENTS
 As per ISO 6935-2: 575 Mpa
 As per ASTM A-615: 620 Mpa

UNIT WEIGHT	
Mean	1.582
Median	1.583
Mode	1.584
Std. Dev.	0.008
Min	1.541
Max	1.610
Count	2092

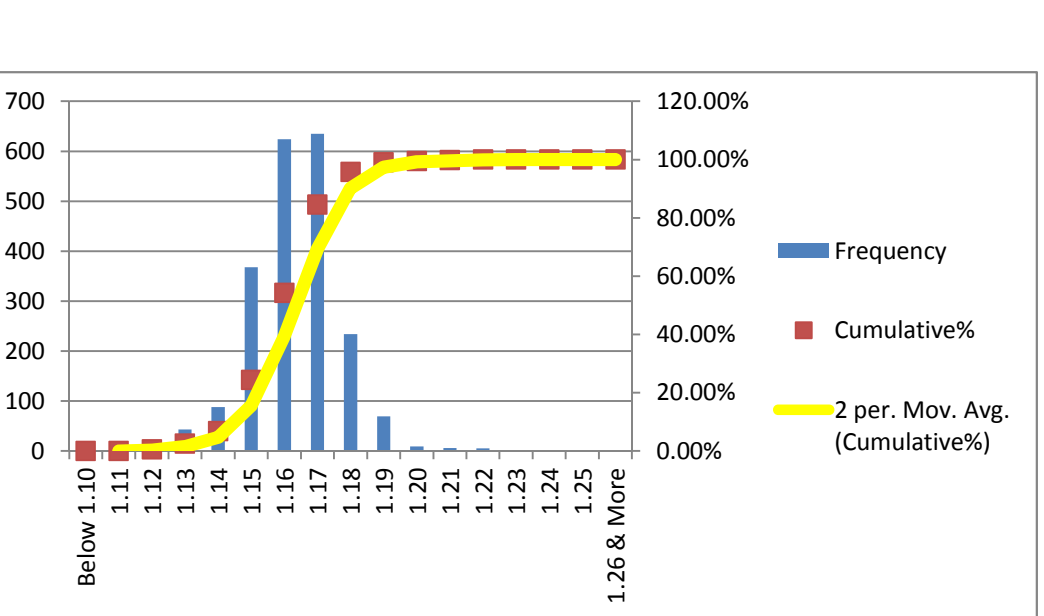
Bin	Frequency	%	Cumulative %
Less Than 1.501	0	0.00%	0.00%
-5%	1.501-1.516	0	0.00%
-4%	1.517-1.532	0	0.00%
-3%	1.533-1.547	0	0.00%
-2%	1.548-1.563	4	0.19%
-1%	1.564-1.579	21	1.00%
0%	1.580-1.588	815	38.96%
1%	1.581-1.596	1238	59.18%
2%	1.597-1.612	14	0.67%
3%	1.613-1.627	0	0.00%
4%	1.628-1.643	0	0.00%
5%	More Than 1.643	0	0.00%
Total	2092		



MINIMUM REQUIREMENTS
 As per ISO 6935-2: ± 5%
 As per ASTM A-615: -6%

T/Y RATIO	
Mean	1.163
Median	1.16
Mode	1.16
Std. Dev.	0.013
Min	1.12
Max	1.22
Count	2092

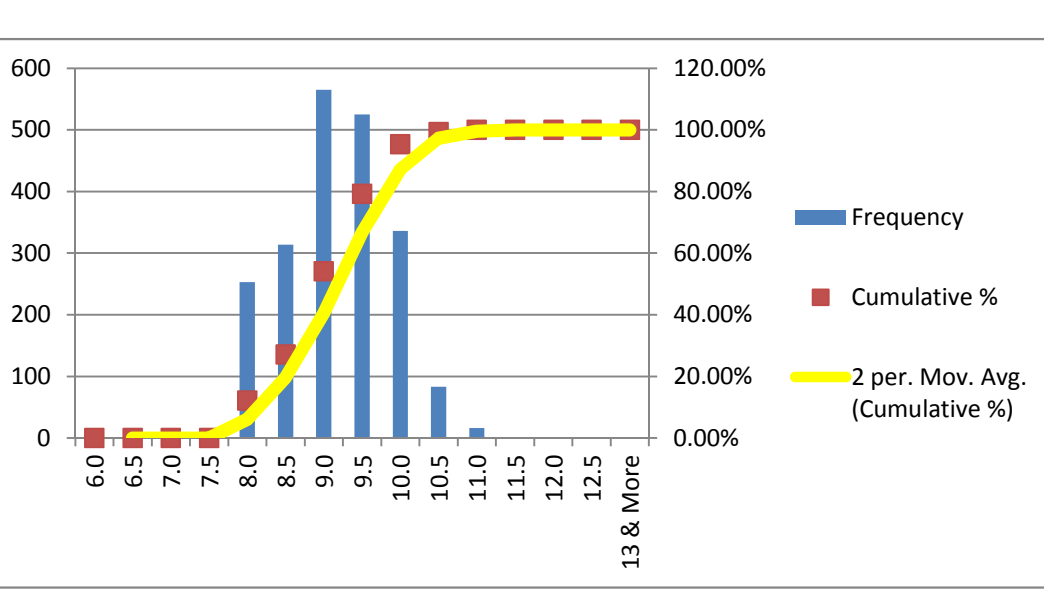
Bin	Frequency	%	Cumulative%
Below 1.10	0	0.00%	0.00%
1.11	0	0.00%	0.00%
1.12	11	0.53%	0.53%
1.13	43	2.06%	2.58%
1.14	88	4.21%	6.79%
1.15	368	17.59%	24.38%
1.16	624	29.83%	54.21%
1.17	635	30.35%	84.56%
1.18	234	11.19%	95.75%
1.19	69	3.30%	99.04%
1.20	9	0.43%	99.47%
1.21	6	0.29%	99.76%
1.22	5	0.24%	100.00%
1.23	0	0.00%	100.00%
1.24	0	0.00%	100.00%
1.25	0	0.00%	100.00%
1.26 & More	0	0.00%	100.00%
Total	2092		



MINIMUM REQUIREMENTS
 As per ISO 6935-2: T/Y: 1.15
 As per ASTM A-615: Not Required

ELN. AT MAX. FORCE (Ag)(GI-200 mm)	
Mean	9.165
Median	9.0
Mode	9.0
Std. Dev.	0.689
Min	8.0
Max	11.0
Count	2092

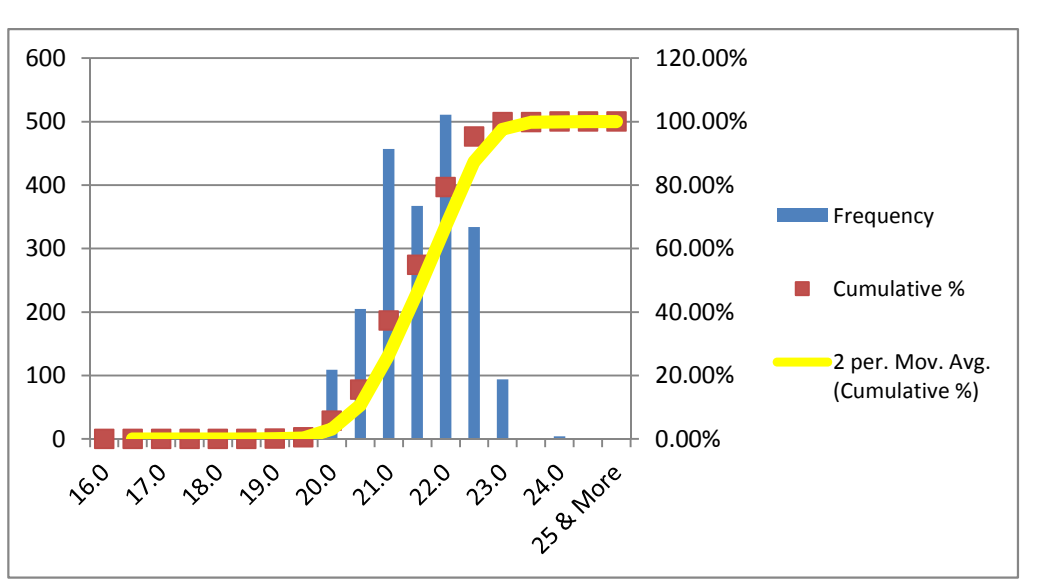
Bin	Frequency	%	Cumulative %
6.0	0	0.00%	0.00%
6.5	0	0.00%	0.00%
7.0	0	0.00%	0.00%
7.5	0	0.00%	0.00%
8.0	253	12.09%	12.09%
8.5	314	15.01%	27.10%
9.0	565	27.01%	54.11%
9.5	525	25.10%	79.21%
10.0	336	16.06%	95.27%
10.5	83	3.97%	99.24%
11.0	16	0.76%	100.00%
11.5	0	0.00%	100.00%
12.0	0	0.00%	100.00%
12.5	0	0.00%	100.00%
13 & More	0	0.00%	100.00%
Total	2092		



MINIMUM REQUIREMENTS
 As per ISO 6935-2: 7%
 As per ASTM A-615: Not Required

ELN. AFTER FRACTURE (AS)(GI-90)	
Mean	21.558
Median	21.5
Mode	22.0
Std. Dev.	0.790
Min	19.0
Max	24.0
Count	2092

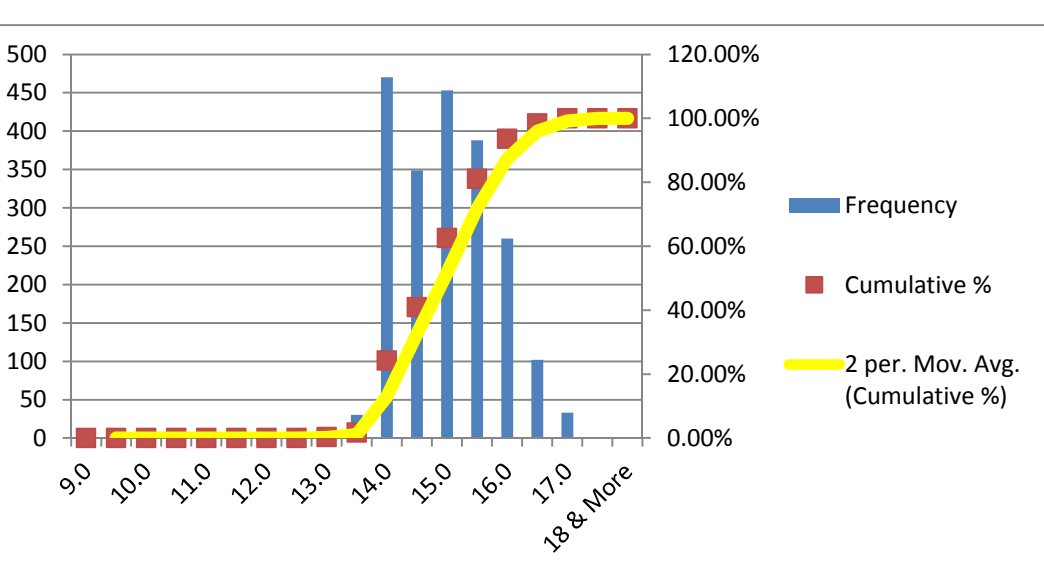
Bin	Frequency	%	Cumulative %
16.0	0	0.00%	0.00%
16.5	0	0.00%	0.00%
17.0	0	0.00%	0.00%
17.5	0	0.00%	0.00%
18.0	0	0.00%	0.00%
18.5	0	0.00%	0.00%
19.0	2	0.10%	0.10%
19.5	9	0.43%	0.53%
20.0	109	5.21%	5.74%
20.5	205	9.80%	15.54%
21.0	457	21.85%	37.38%
21.5	867	41.47%	78.85%
22.0	511	24.43%	93.28%
22.5	334	15.97%	99.26%
23.0	94	4.49%	99.81%
23.5	0	0.00%	99.81%
24.0	4	0.19%	100.00%
24.5	0	0.00%	100.00%
25 & More	0	0.00%	100.00%
Total	2092		



MINIMUM REQUIREMENTS
 As per ISO 6935-2: 14%

ELN. AFTER FRACTURE (A)(GI-203.2 mm)	
Mean	14.985
Median	15.0
Mode	14.0
Std. Dev.	0.810
Min	13.0
Max	17.0
Count	2092

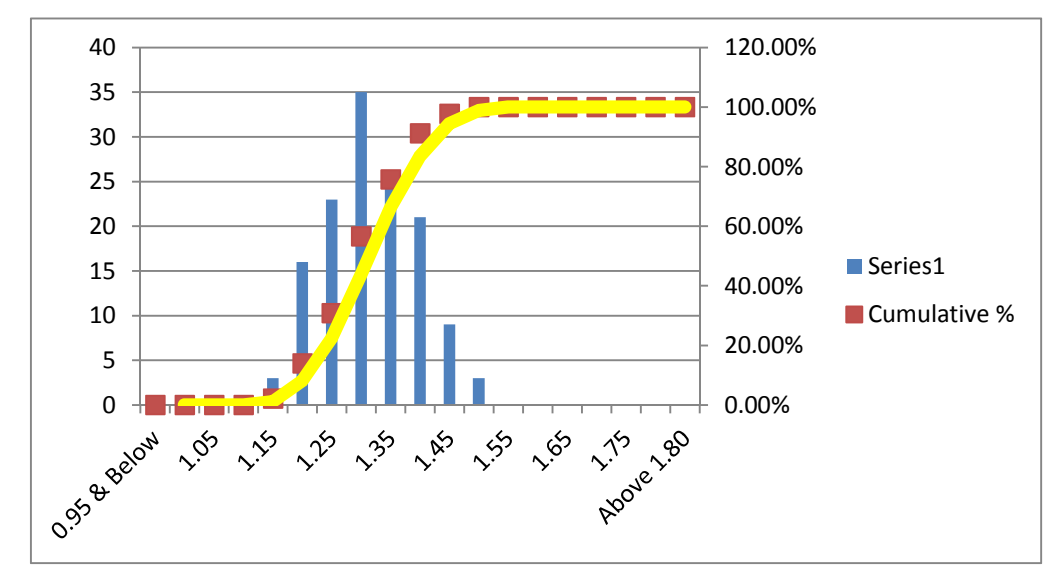
Bin	Frequency	%	Cumulative %
9.0	0	0.00%	0.00%
9.5	0	0.00%	0.00%
10.0	0	0.00%	0.00%
10.5	0	0.00%	0.00%
11.0	0	0.00%	0.00%
11.5	0	0.00%	0.00%
12.0	0	0.00%	0.00%
12.5	0	0.00%	0.00%
13.0	7	0.33%	0.33%
13.5	30	1.43%	1.77%
14.0	470	22.47%	24.24%
14.5	349	16.68%	40.92%
15.0	453	21.65%	62.57%
15.5	388	18.55%	81.12%
16.0	260	12.43%	93.55%
16.5	102	4.88%	98.42%
17.0	33	1.58%	100.00%
17.5	0	0.00%	100.00%
18 & More	0	0.00%	100.00%
Total	2092		



MINIMUM REQUIREMENTS
 As per ASTM A-615: 9%

TRANSVERSE RIB HEIGHT	
Mean	1.316
Median	1.30
Mode	1.3
Std. Dev.	0.079
Min	1.15
Max	1.50
Count	136

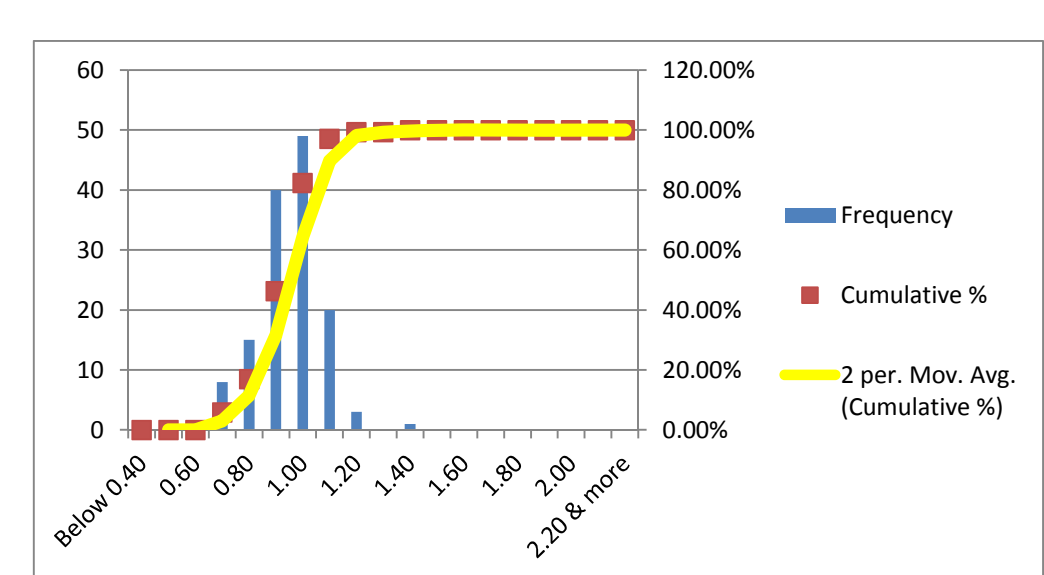
Bin	Frequency	%	Cumulative %
0.95 & Below	0	0.00%	0.00%
1.00	0	0.00%	0.00%
1.05	0	0.00%	0.00%
1.10	0	0.00%	0.00%
1.15	3	2.21%	2.21%
1.20	16	11.76%	13.97%
1.25	23	16.91%	30.88%
1.30	35	25.74%	56.62%
1.35	26	19.12%	75.74%
1.40	21	15.44%	91.18%
1.45	9	6.62%	97.79%
1.50	3	2.21%	100.00%
1.55	0	0.00%	100.00%
1.60	0	0.00%	100.00%
1.65	0	0.00%	100.00%
1.70	0	0.00%	100.00%
1.75	0	0.00%	100.00%
1.80	0	0.00%	100.00%
Above 1.80	0	0.00%	100.00%
Total	136		



MINIMUM REQUIREMENTS
 As per ISO 6935-2: 1.04 mm
 As per ASTM A-615: 0.71 mm

LONGITUDINAL RIB HEIGHT	
Mean	0.898
Median	0.90
Mode	0.9
Std. Dev.	0.115
Min	0.65
Max	1.35
Count	136

Bin	Frequency	%	Cumulative %
Below 0.40	0	0.00%	0.00%
0.50	0	0.00%	0.00%
0.60	0	0.00%	0.00%
0.70	8	5.88%	5.88%
0.80	15	11.03%	16.91%
0.90	40	29.41%	46.32%
1.00	49	36.03%	82.35%
1.10	20	14.71%	97.06%
1.20	3	2.21%	99.26%
1.30	0	0.00%	99.26%
1.40	1	0.74%	100.00%
1.50	0	0.00%	100.00%
1.60	0	0.00%	100.00%
1.70	0	0.00%	100.00%
1.80	0	0.00%	100.00%
1.90	0	0.00%	100.00%
2.00	0	0.00%	100.00%
2.10	0	0.00%	100.00%
2.20 & more	0	0.00%	100.00%
Total	136		



MAXIMUM REQUIREMENTS
 As per ISO 6935-2: 2.40 mm

BEND TEST:
 ALL THE SAMPLES IN THIS CAMPAIGN PASSED THE BEND TEST MAINTAINING MANDREL DIA 3D

MINIMUM REQUIREMENTS
 As per ISO 6935-2: 3D
 As per ASTM A-615: 3.5D

REBEND TEST:
 ALL THE SAMPLES IN THIS CAMPAIGN PASSED THE REBEND TEST MAINTAINING MANDREL DIA 4D

MINIMUM REQUIREMENTS
 As per ISO 6935-2: 5D
 As per ASTM A-615: Not Required

Nominal Diameter D	Unit Weight	Yield or Proof Strength R _{eH}	Ultimate Tensile Strength R _m	T/Y Ratio	% Total Elongation at Maximum Force A _{gt}	% Elongation after Fracture A	% Elongation after Fracture A	Height of Transverse Rib	Height of Longitudinal Rib
16	1.545	600	695	1.16	8.5	16.00	21.0	1.25	0.85
16	1.562	590	685	1.16	10.0	16.50	20.0		
16	1.570	535	620	1.16	10.0	15.00	21.5		
16	1.562	550	640	1.16	8.0	16.00	22.5		
16	1.569	540	625	1.16	9.0	15.50	23.0		
16	1.566	560	650	1.16	8.5	13.50	20.0		
16	1.570	560	650	1.16	9.0	14.50	21.5		
16	1.572	560	650	1.16	9.5	15.00	22.0		
16	1.570	550	640	1.16	9.5	16.00	22.0		
16	1.577	555	645	1.16	8.5	14.00	21.0		
16	1.579	560	650	1.16	9.0	14.00	21.0		
16	1.570	530	615	1.16	8.0	13.50	20.0		
16	1.573	535	620	1.16	8.5	13.50	20.5		
16	1.573	545	630	1.16	8.5	14.00	21.0		
16	1.579	550	640	1.16	9.5	15.50	22.0		
16	1.576	555	645	1.16	8.5	14.00	20.5		
16	1.567	530	615	1.16	8.5	14.00	20.5		
16	1.571	550	640	1.16	9.5	15.50	22.0		
16	1.581	530	615	1.16	8.5	14.50	23.0		
16	1.582	535	620	1.16	8.5	14.50	22.5		
16	1.583	540	625	1.16	8.5	14.50	22.0		
16	1.588	535	620	1.16	8.5	14.50	22.5		
16	1.589	535	620	1.16	8.5	14.50	22.5		
16	1.590	540	625	1.16	8.5	14.50	22.0		
16	1.584	545	630	1.16	9.0	15.00	21.5		
16	1.585	550	640	1.16	9.5	15.50	21.5		
16	1.588	535	620	1.16	8.5	14.50	22.5		
16	1.584	550	640	1.16	9.5	15.50	21.5		
16	1.586	545	630	1.16	9.0	15.00	21.5		
16	1.582	545	630	1.16	9.0	15.00	21.5		
16	1.587	550	640	1.16	9.5	15.50	21.5		
16	1.588	545	630	1.16	9.0	15.00	21.5		
16	1.583	550	640	1.16	9.5	15.50	21.5		
16	1.588	545	630	1.16	9.0	15.00	21.5		
16	1.582	540	625	1.16	8.5	14.50	22.0		
16	1.584	540	625	1.16	8.5	14.50	22.0		
16	1.584	545	630	1.16	9.0	15.00	21.5		
16	1.591	545	630	1.16	9.0	15.00	21.5		
16	1.589	540	625	1.16	8.5	14.50	22.0		
16	1.592	545	630	1.16	9.0	15.00	21.5		
16	1.593	550	640	1.16	9.5	15.50	21.5		
16	1.587	540	625	1.16	8.5	14.50	22.0		
16	1.596	535	620	1.16	8.5	14.50	22.5		
16	1.584	540	625	1.16	8.5	14.50	22.0		
16	1.582	540	625	1.16	8.5	14.50	22.0		
16	1.566	550	640	1.16	9.5	15.00	22.0		
16	1.573	550	640	1.16	10.0	15.00	21.0		
16	1.569	555	645	1.16	10.0	16.00	21.0		
16	1.570	550	640	1.16	10.0	16.00	22.0		
16	1.568	560	650	1.16	10.0	14.00	21.0		
16	1.566	550	640	1.16	9.5	14.00	21.5		
16	1.564	550	640	1.16	9.0	14.00	22.0		
16	1.568	530	615	1.16	10.0	15.00	22.5		
16	1.568	530	615	1.16	9.0	14.50	23.0		
16	1.578	560	650	1.16	8.0	14.00	21.0		
16	1.567	545	630	1.16	9.0	15.00	22.5		
16	1.569	550	640	1.16	9.5	16.00	22.0		
16	1.569	550	640	1.16	10.0	14.00	21.0		
16	1.567	555	645	1.16	9.5	15.50	21.0		
16	1.568	550	640	1.16	8.5	14.00	22.0		
16	1.569	550	640	1.16	8.5	14.00	22.5		
16	1.576	555	645	1.16	9.0	14.50	23.0		
16	1.578	550	640	1.16	9.5	14.00	21.5		
16	1.578	540	625	1.16	9.0	15.00	22.5		
16	1.579	525	610	1.16	9.5	14.00	22.5		
16	1.573	545	630	1.16	9.0	15.50	22.0		

16	1.578	540	625	1.16	8.5	14.50	22.5	1.20	0.90
16	1.579	550	640	1.16	9.5	16.00	21.0		
16	1.578	545	630	1.16	9.0	15.50	22.0		
16	1.572	535	620	1.16	8.5	14.50	22.5	1.30	0.90
16	1.584	540	625	1.16	8.5	14.50	22.0		
16	1.587	555	645	1.16	10.0	16.50	21.0		
16	1.589	535	620	1.16	8.5	14.50	22.5		
16	1.579	550	640	1.16	9.5	16.00	21.5		
16	1.586	540	625	1.16	8.5	14.50	22.0	1.25	0.85
16	1.584	550	640	1.16	9.5	16.00	21.5		
16	1.587	545	630	1.16	9.0	15.50	21.5		
16	1.582	535	620	1.16	8.5	14.50	22.5		
16	1.587	550	640	1.16	10.0	16.50	22.0		
16	1.584	545	630	1.16	9.0	15.50	21.5		
16	1.582	535	620	1.16	8.5	14.50	22.5	1.20	0.75
16	1.582	555	645	1.16	10.0	16.50	21.0		
16	1.586	530	615	1.16	8.5	14.50	22.5		
16	1.584	540	625	1.16	9.0	15.50	22.0		
16	1.589	535	620	1.16	8.5	14.50	22.5		
16	1.587	550	640	1.16	9.5	16.00	21.5	1.25	0.85
16	1.588	540	625	1.16	8.5	14.50	22.0		
16	1.589	535	620	1.16	8.5	14.50	22.5		
16	1.581	555	645	1.16	9.0	14.50	21.5	1.25	1.02
16	1.572	545	630	1.16	8.0	13.50	20.5		
16	1.575	545	630	1.16	8.5	14.00	20.5		
16	1.566	540	625	1.16	8.5	14.00	22.0		
16	1.568	540	625	1.16	8.0	13.00	20.5	1.20	1.00
16	1.571	535	620	1.16	8.5	13.50	20.5		
16	1.582	535	620	1.16	9.0	14.50	22.0		
16	1.574	540	625	1.16	9.0	15.00	23.0	1.30	0.93
16	1.576	550	640	1.16	9.0	13.00	21.0		
16	1.575	560	650	1.16	9.5	13.50	21.0		
16	1.578	535	620	1.16	9.5	14.00	23.0	1.30	1.05
16	1.580	535	620	1.16	9.0	15.00	21.5		
16	1.589	535	620	1.16	9.0	15.50	22.5		
16	1.574	540	625	1.16	9.5	14.00	22.5		
16	1.569	535	620	1.16	9.5	14.00	23.0	1.35	1.02
16	1.573	550	640	1.16	9.0	15.50	23.0		
16	1.579	540	625	1.16	9.0	14.00	22.0		
16	1.575	535	620	1.16	9.5	14.00	23.0		
16	1.570	535	620	1.16	9.5	15.00	22.0		
16	1.576	535	620	1.16	9.0	15.00	23.0		
16	1.575	545	630	1.16	9.0	16.00	24.0	1.30	0.85
16	1.575	535	620	1.16	9.5	15.00	24.0		
16	1.576	535	620	1.16	9.0	15.50	24.0		
16	1.578	550	640	1.16	10.0	14.00	23.0		
16	1.586	535	620	1.16	9.5	15.50	22.5	1.25	0.80
16	1.596	560	650	1.16	9.0	14.50	20.5		
16	1.593	560	650	1.16	9.0	14.50	21.0		
16	1.573	550	640	1.16	10.5	15.00	21.0		
16	1.570	550	640	1.16	9.5	16.00	21.0	1.25	0.77
16	1.572	545	630	1.16	9.5	16.00	22.0		
16	1.572	535	620	1.16	10.0	15.00	22.5		
16	1.581	560	650	1.16	9.0	15.00	21.5		
16	1.580	560	650	1.16	8.5	14.00	22.0		
16	1.574	535	620	1.16	9.0	15.00	22.5		
16	1.573	530	615	1.16	9.5	13.50	23.0	1.40	0.80
16	1.573	550	640	1.16	9.5	14.50	22.0		
16	1.574	550	640	1.16	9.0	14.00	21.0		
16	1.573	525	610	1.16	9.0	15.50	22.5		
16	1.575	530	615	1.16	9.5	14.50	22.0		
16	1.573	550	640	1.16	9.5	15.50	21.0	1.35	1.02
16	1.572	545	630	1.16	10.5	15.00	21.0		
16	1.570	545	630	1.16	8.5	14.50	21.0		
16	1.580	540	625	1.16	9.5	14.00	22.0		
16	1.578	540	625	1.16	10.0	14.00	22.0		
16	1.573	535	620	1.16	10.0	15.00	22.5	1.25	0.96
16	1.577	540	625	1.16	9.5	14.00	22.0		
16	1.580	550	640	1.16	9.0	14.00	21.0	1.30	0.68
16	1.580	530	615	1.16	9.0	14.00	22.5		
16	1.579	540	625	1.16	8.5	14.00	22.0		
16	1.582	540	625	1.16	8.5	14.00	22.0	1.30	0.65
16	1.587	555	645	1.16	9.5	15.00	21.0		
16	1.589	535	620	1.16	8.5	14.00	22.0		
16	1.587	535	620	1.16	8.5	14.00	22.0	1.30	0.68
16	1.587	535	620	1.16	8.5	14.00	22.0	1.30	0.65

16	1.584	530	615	1.16	8.5	14.00	22.5	1.25	0.75
16	1.586	555	645	1.16	9.5	15.00	21.0	1.25	0.75
16	1.586	540	625	1.16	8.5	14.00	22.0	1.25	0.75
16	1.592	550	640	1.16	9.5	15.50	22.0	1.25	0.75
16	1.571	550	640	1.16	9.5	15.50	22.0	1.20	0.78
16	1.580	555	645	1.16	9.5	16.00	22.0	1.20	0.78
16	1.579	560	650	1.16	9.5	16.00	22.5	1.35	0.95
16	1.584	560	650	1.16	9.5	15.50	22.0	1.35	0.95
16	1.580	545	630	1.16	9.5	15.50	22.0	1.35	0.95
16	1.586	545	630	1.16	10.0	16.00	22.5	1.35	0.95
16	1.584	545	630	1.16	9.0	14.50	21.0	1.35	0.95
16	1.584	540	625	1.16	9.0	15.00	21.5	1.35	1.03
16	1.587	540	625	1.16	9.0	15.00	21.0	1.35	1.03
16	1.591	545	630	1.16	9.0	15.00	21.0	1.35	1.03
16	1.582	545	630	1.16	9.5	15.50	21.5	1.25	0.95
16	1.579	550	640	1.16	10.0	16.00	22.0	1.25	0.95
16	1.587	555	645	1.16	9.5	16.00	22.5	1.30	0.90
16	1.576	550	640	1.16	9.0	15.50	22.0	1.30	0.90
16	1.583	550	640	1.16	8.5	14.50	21.0	1.30	0.90
16	1.574	550	640	1.16	9.5	16.50	22.5	1.30	0.90
16	1.587	550	640	1.16	9.0	15.50	22.0	1.30	0.90
16	1.582	550	640	1.16	9.0	15.00	21.0	1.30	0.90
16	1.578	540	625	1.16	9.0	15.00	21.0	1.25	0.75
16	1.584	550	640	1.16	10.5	16.50	22.5	1.25	0.75
16	1.594	550	640	1.16	9.5	16.00	22.5	1.25	0.75
16	1.583	555	645	1.16	9.0	15.00	21.5	1.40	0.80
16	1.593	545	630	1.16	9.0	15.00	21.0	1.40	0.80
16	1.595	535	620	1.16	8.5	14.50	21.0	1.40	0.80
16	1.581	555	645	1.16	9.0	14.50	21.5	1.40	0.80
16	1.578	560	650	1.16	9.5	15.00	22.0	1.30	0.98
16	1.588	555	645	1.16	8.0	14.00	21.0	1.30	0.98
16	1.585	560	650	1.16	10.0	16.00	22.5	1.30	0.98
16	1.561	560	650	1.16	9.5	15.00	22.0	1.40	0.98
16	1.567	550	640	1.16	9.0	15.00	21.5	1.40	0.98
16	1.570	555	645	1.16	9.5	15.50	22.0	1.40	0.98
16	1.568	555	645	1.16	10.0	16.00	22.5	1.40	0.98
16	1.581	555	645	1.16	8.5	14.00	20.5	1.40	0.98
16	1.581	555	645	1.16	9.0	15.00	21.5	1.45	0.99
16	1.595	540	625	1.16	9.0	14.50	21.5	1.45	0.99
16	1.582	555	645	1.16	9.5	15.00	22.0	1.45	0.99
16	1.583	535	620	1.16	10.0	16.00	22.5	1.45	0.99
16	1.579	540	625	1.16	8.5	14.50	21.5	1.50	0.99
16	1.586	540	625	1.16	8.5	14.00	20.5	1.50	0.99
16	1.581	555	645	1.16	9.0	14.00	21.0	1.45	0.99
16	1.587	535	620	1.16	8.5	14.00	22.0	1.45	0.99
16	1.586	535	620	1.16	8.5	14.00	22.0	1.40	1.00
16	1.586	535	620	1.16	8.5	14.00	22.0	1.40	1.00
16	1.586	535	620	1.16	8.5	14.00	22.0	1.45	0.99
16	1.587	540	625	1.16	8.5	14.00	22.0	1.45	0.99
16	1.587	535	620	1.16	8.5	14.00	22.0	1.45	0.99
16	1.584	535	620	1.16	8.5	14.00	22.0	1.50	0.99
16	1.582	535	620	1.16	8.5	14.00	22.0	1.50	0.99
16	1.588	555	645	1.16	10.0	15.50	21.0	1.45	0.99
16	1.580	555	645	1.16	8.0	15.50	22.0	1.45	0.99
16	1.576	560	650	1.16	10.0	15.00	20.0	1.50	0.99
16	1.580	545	630	1.16	8.0	14.00	20.5	1.50	0.99
16	1.574	540	625	1.16	9.0	14.00	22.0	1.50	0.99
16	1.577	530	615	1.16	9.5	16.00	21.5	1.15	0.95
16	1.572	535	620	1.16	8.0	14.00	20.0	1.15	0.95
16	1.576	560	650	1.16	9.5	15.50	21.0	1.15	0.95
16	1.573	545	630	1.16	8.0	14.00	20.0	1.15	0.95
16	1.574	545	630	1.16	9.5	15.50	20.0	1.15	0.95
16	1.574	545	630	1.16	8.0	15.00	22.0	1.15	0.95
16	1.573	545	630	1.16	9.5	14.00	22.0	1.15	0.95
16	1.573	545	630	1.16	9.5	14.00	20.5	1.15	0.95
16	1.572	540	625	1.16	8.0	15.00	21.5	1.15	0.95
16	1.573	540	625	1.16	9.5	14.00	22.5	1.20	0.90
16	1.573	555	645	1.16	10.0	14.00	21.5	1.20	0.90
16	1.574	550	640	1.16	9.5	14.00	21.5	1.20	0.90
16	1.572	535	620	1.16	10.5	14.00	20.5	1.20	0.90
16	1.572	560	650	1.16	8.0	15.00	20.5	1.20	0.90
16	1.577	555	645	1.16	9.5	14.00	22.0	1.22	0.85
16	1.572	540	625	1.16	8.0	15.50	22.0	1.22	0.85
16	1.572	545	630	1.16	10.0	15.50	20.0	1.22	0.85
16	1.574	550	640	1.16	8.0	14.00	21.5	1.22	0.85
16	1.574	545	630	1.16	9.5	14.00	21.5	1.22	0.85
16	1.570	545	630	1.16	10.0	16.00	21.5	1.22	0.85

16	1.578	545	630	1.16	10.0	14.00	21.5	1.25	0.95
16	1.584	545	630	1.16	10.0	16.00	20.5		
16	1.582	545	630	1.16	8.0	14.00	20.5	1.20	0.80
16	1.591	560	650	1.16	9.0	15.00	21.5	1.15	0.79
16	1.582	560	650	1.16	10.5	16.50	22.5		
16	1.586	540	625	1.16	9.5	15.00	21.0		
16	1.589	555	645	1.16	10.0	16.00	22.0		
16	1.583	555	645	1.16	10.5	16.50	22.5		
16	1.590	555	645	1.16	9.5	15.50	22.0		
16	1.596	540	625	1.16	9.0	14.00	20.5		
16	1.583	545	630	1.16	9.0	14.50	21.0	1.40	0.84
16	1.591	540	625	1.16	9.0	14.00	20.5		
16	1.585	540	625	1.16	8.5	14.00	20.5		
16	1.588	545	630	1.16	9.0	15.50	22.0		
16	1.588	550	640	1.16	10.5	16.50	22.5		
16	1.582	550	640	1.16	10.0	16.50	22.5		
16	1.591	560	650	1.16	9.5	15.50	22.0		
16	1.587	550	640	1.16	9.0	15.00	22.0	1.45	0.99
16	1.589	560	650	1.16	10.0	16.50	22.5		
16	1.594	560	650	1.16	10.0	16.00	22.0		
16	1.599	550	640	1.16	9.5	16.00	22.0		
16	1.595	550	640	1.16	9.5	16.00	22.0		
16	1.587	560	650	1.16	9.5	16.50	22.5		
16	1.583	550	640	1.16	9.5	15.50	22.0		
16	1.579	550	640	1.16	9.5	15.50	22.0		
16	1.589	560	650	1.16	9.0	14.50	21.0		
16	1.546	550	640	1.16	9.5	16.00	22.0		
16	1.545	550	640	1.16	10.0	16.50	22.5		
16	1.574	560	650	1.16	9.5	16.00	22.5		
16	1.572	560	650	1.16	10.5	16.50	22.5	1.35	0.98
16	1.577	560	650	1.16	9.0	15.50	22.0		
16	1.569	555	645	1.16	9.5	15.50	22.0		
16	1.568	550	640	1.16	9.5	15.50	22.0		
16	1.576	550	640	1.16	9.0	15.50	22.0		
16	1.570	560	650	1.16	9.0	15.00	21.0		
16	1.572	560	650	1.16	9.5	15.50	22.0		
16	1.579	555	645	1.16	9.0	15.00	21.0	1.30	1.02
16	1.584	540	625	1.16	8.5	14.50	22.0		
16	1.586	550	640	1.16	9.5	15.50	21.5		
16	1.589	550	640	1.16	9.5	15.50	21.5		
16	1.592	550	640	1.16	9.5	15.50	21.5		
16	1.588	550	640	1.16	9.5	15.50	21.5		
16	1.595	545	630	1.16	9.0	15.00	21.5		
16	1.595	545	630	1.16	9.0	15.00	21.5	1.35	0.85
16	1.580	545	630	1.16	9.0	15.00	21.5		
16	1.583	550	640	1.16	9.5	15.50	21.5		
16	1.584	550	640	1.16	9.5	15.50	21.5		
16	1.586	550	640	1.16	9.5	15.50	21.5		
16	1.587	545	630	1.16	9.0	15.00	21.5		
16	1.582	545	630	1.16	9.0	15.00	22.0		
16	1.584	550	640	1.16	9.5	15.50	21.5	1.30	0.82
16	1.585	550	640	1.16	9.5	15.50	21.5		
16	1.584	550	640	1.16	9.5	15.50	21.5		
16	1.587	550	640	1.16	9.5	15.50	21.5		
16	1.589	545	630	1.16	9.0	15.00	22.0		
16	1.590	545	630	1.16	9.0	15.00	22.0		
16	1.587	545	630	1.16	9.0	15.00	22.0		
16	1.584	545	630	1.16	9.0	15.00	22.0	1.30	0.89
16	1.586	545	630	1.16	9.0	15.00	22.0		
16	1.584	540	625	1.16	8.5	14.50	22.5		
16	1.580	555	645	1.16	10.0	16.00	21.0		
16	1.565	550	640	1.16	9.5	15.50	21.5		
16	1.578	535	620	1.16	8.5	14.50	22.5		
16	1.565	550	640	1.16	9.5	15.50	21.5		
16	1.564	535	620	1.16	8.5	14.50	22.5		
16	1.567	540	625	1.16	8.5	14.50	22.5		
16	1.575	535	620	1.16	8.5	14.50	22.5		
16	1.573	535	620	1.16	8.5	14.50	22.5		
16	1.577	555	645	1.16	8.5	15.00	21.0		
16	1.577	555	645	1.16	8.0	14.50	21.0		
16	1.585	550	640	1.16	9.5	15.00	20.5	1.25	0.86
16	1.581	560	650	1.16	10.0	14.00	20.5		
16	1.585	555	645	1.16	10.0	15.50	21.5		
16	1.579	545	630	1.16	9.5	15.00	20.5		
16	1.583	535	620	1.16	8.0	16.50	20.0		
16	1.572	525	610	1.16	10.0	16.50	20.5		

16	1.577	535	620	1.16	9.5	15.50	19.5	1.40	0.80
16	1.584	530	615	1.16	10.0	14.00	20.5		
16	1.576	550	640	1.16	8.0	15.00	21.0		
16	1.580	545	630	1.16	9.5	15.50	20.0		
16	1.577	540	625	1.16	8.0	14.00	20.5		
16	1.574	545	630	1.16	8.0	15.50	21.0		
16	1.586	560	650	1.16	10.0	15.50	20.5	1.20	0.79
16	1.574	555	645	1.16	8.5	14.00	22.0		
16	1.586	550	640	1.16	9.5	15.50	20.0		
16	1.584	540	625	1.16	9.0	15.00	21.5		
16	1.580	550	640	1.16	10.5	14.00	22.0		
16	1.584	560	650	1.16	9.0	14.00	21.0		
16	1.586	540	625	1.16	8.0	16.50	20.0	1.35	0.78
16	1.588	560	650	1.16	10.0	14.00	20.5		
16	1.592	540	625	1.16	9.5	15.00	22.5		
16	1.580	550	640	1.16	8.0	14.50	22.0		
16	1.589	545	630	1.16	9.5	14.00	23.0		
16	1.583	550	640	1.16	8.0	15.50	20.5		
16	1.584	530	615	1.16	8.0	15.50	22.5	1.20	0.85
16	1.584	560	650	1.16	10.0	15.00	20.5		
16	1.586	545	630	1.16	10.0	14.00	21.0		
16	1.589	555	645	1.16	8.0	15.00	22.0		
16	1.590	550	640	1.16	8.0	16.00	23.0		
16	1.594	560	650	1.16	8.5	14.00	21.0		
16	1.578	555	645	1.16	10.0	16.00	22.5	1.30	0.95
16	1.585	560	650	1.16	9.5	15.00	22.0		
16	1.585	550	640	1.16	10.0	16.00	22.5		
16	1.589	555	645	1.16	9.5	15.50	22.0		
16	1.598	555	645	1.16	9.0	14.50	21.5		
16	1.582	560	650	1.16	9.0	14.50	21.5		
16	1.584	565	655	1.16	8.5	14.00	21.0	1.35	0.90
16	1.600	550	640	1.16	9.5	15.00	22.0		
16	1.579	545	630	1.16	11.0	17.00	23.0		
16	1.583	550	640	1.16	8.5	14.00	21.0		
16	1.592	540	625	1.16	9.0	14.50	22.0		
16	1.595	560	650	1.16	8.5	14.00	21.0		
16	1.587	560	650	1.16	9.0	14.50	21.5	1.40	0.95
16	1.577	540	625	1.16	9.5	15.50	22.0		
16	1.579	540	625	1.16	8.5	14.00	21.0		
16	1.583	530	615	1.16	8.5	14.00	20.5		
16	1.586	535	620	1.16	9.0	14.50	21.5		
16	1.589	540	625	1.16	9.5	15.50	22.0		
16	1.585	565	655	1.16	9.0	14.50	21.0	1.40	0.95
16	1.577	550	640	1.16	9.5	15.00	23.0		
16	1.580	555	645	1.16	9.5	15.00	22.5		
16	1.583	555	645	1.16	9.5	15.00	21.5		
16	1.569	550	640	1.16	9.5	15.00	21.0		
16	1.576	560	650	1.16	10.0	15.50	20.0		
16	1.568	550	640	1.16	9.5	15.00	20.5	1.35	0.78
16	1.570	560	650	1.16	10.0	15.50	20.5		
16	1.579	560	650	1.16	10.0	15.50	21.5		
16	1.574	560	650	1.16	10.0	15.50	20.5		
16	1.570	550	640	1.16	9.5	15.00	20.5		
16	1.574	550	640	1.16	9.5	15.50	20.5		
16	1.570	550	640	1.16	9.5	15.50	21.0	1.40	0.82
16	1.572	550	640	1.16	9.5	15.00	20.0		
16	1.577	550	640	1.16	9.5	15.00	21.0		
16	1.572	550	640	1.16	9.5	15.00	21.5		
16	1.569	550	640	1.16	9.5	15.00	21.0		
16	1.565	550	640	1.16	9.5	15.00	21.0		
16	1.573	545	630	1.16	8.5	14.00	20.5	1.40	1.03
16	1.569	550	640	1.16	9.5	15.00	21.0		
16	1.568	550	640	1.16	9.5	15.00	21.5		
16	1.565	550	640	1.16	9.5	15.00	22.0		
16	1.575	550	640	1.16	9.5	15.00	21.0		
16	1.571	540	625	1.16	8.5	14.00	20.5		
16	1.568	545	630	1.16	9.0	14.50	21.0	1.35	0.95
16	1.572	545	630	1.16	9.0	14.50	21.0		
16	1.559	545	630	1.16	9.0	14.50	21.0		
16	1.584	535	620	1.16	8.0	14.50	20.5	1.30	0.92
16	1.585	545	630	1.16	9.5	16.00	21.0		
16	1.580	550	640	1.16	9.5	14.00	20.5		
16	1.583	560	650	1.16	9.5	15.00	21.0	1.40	1.03
16	1.582	550	640	1.16	10.0	16.00	21.0		
16	1.588	535	620	1.16	9.5	14.00	21.0		
16	1.586	540	625	1.16	8.0	16.00	22.5		

16	1.584	560	650	1.16	9.5	15.00	21.5	1.35	0.98
16	1.565	560	650	1.16	8.0	14.00	21.5		
16	1.577	555	645	1.16	9.5	14.00	20.5		
16	1.568	540	625	1.16	8.0	15.50	19.5	1.40	0.97
16	1.567	560	650	1.16	10.5	16.00	21.0		
16	1.579	550	640	1.16	10.0	14.00	21.0		
16	1.578	555	645	1.16	9.5	14.00	21.0		
16	1.582	550	640	1.16	10.0	14.00	22.0		
16	1.580	535	620	1.16	9.5	14.50	22.0	1.35	0.96
16	1.576	555	645	1.16	8.0	14.00	21.0		
16	1.581	550	640	1.16	10.5	15.00	21.0		
16	1.583	555	645	1.16	9.5	15.50	20.5		
16	1.592	550	640	1.16	9.0	14.50	21.5		
16	1.587	555	645	1.16	8.0	14.00	20.5	1.30	0.85
16	1.581	555	645	1.16	8.5	14.00	21.0		
16	1.589	555	645	1.16	9.0	14.50	21.0		
16	1.591	560	650	1.16	9.0	15.00	21.5		
16	1.588	560	650	1.16	8.5	14.00	20.5		
16	1.592	550	640	1.16	9.0	14.50	21.5	1.20	0.80
16	1.583	560	650	1.16	8.5	14.00	20.5		
16	1.583	560	650	1.16	8.5	14.00	21.0	1.25	0.75
16	1.589	560	650	1.16	9.0	15.00	21.5	1.20	0.80
16	1.588	540	625	1.16	8.5	14.00	21.0		
16	1.582	560	650	1.16	9.0	14.50	21.0	1.25	0.85
16	1.590	535	620	1.16	8.5	14.00	22.5		
16	1.584	540	625	1.16	8.5	14.00	22.0		
16	1.580	540	625	1.16	8.5	14.00	22.0		
16	1.582	555	645	1.16	10.0	15.50	21.0		
16	1.583	555	645	1.16	10.0	15.50	21.0	1.20	0.75
16	1.580	555	645	1.16	10.0	15.50	21.0		
16	1.584	545	630	1.16	9.0	14.50	22.0		
16	1.583	550	640	1.16	9.5	15.00	21.5		
16	1.586	550	640	1.16	9.5	15.00	21.5		
16	1.587	540	625	1.16	8.5	14.00	22.5	1.25	0.85
16	1.588	560	650	1.16	10.0	15.50	21.0		
16	1.589	550	640	1.16	9.5	15.00	21.5		
16	1.586	535	620	1.16	8.5	14.00	22.5		
16	1.584	535	620	1.16	8.5	14.00	22.5		
16	1.587	535	620	1.16	8.5	14.00	22.5	1.34	0.92
16	1.583	550	640	1.16	9.5	15.00	21.5		
16	1.586	540	625	1.16	8.5	14.00	22.0		
16	1.582	540	625	1.16	8.5	14.00	22.0		
16	1.584	555	645	1.16	10.0	15.50	21.0		
16	1.582	555	645	1.16	10.0	15.50	21.0	1.40	0.89
16	1.587	550	640	1.16	9.5	15.00	21.5		
16	1.586	540	625	1.16	8.5	14.00	22.0		
16	1.584	540	625	1.16	8.5	14.00	22.0		
16	1.581	555	645	1.16	10.0	15.50	21.0		
16	1.584	535	620	1.16	8.5	14.00	22.5	1.35	0.90
16	1.581	545	630	1.16	9.0	14.50	22.0		
16	1.580	550	640	1.16	9.5	15.00	21.5		
16	1.574	540	625	1.16	8.5	14.00	22.0		
16	1.568	540	625	1.16	8.5	14.00	22.0		
16	1.587	550	640	1.16	9.5	15.00	21.5	1.30	0.82
16	1.580	550	640	1.16	9.5	15.50	21.5		
16	1.573	555	645	1.16	10.0	16.00	21.0		
16	1.582	550	640	1.16	9.5	15.50	21.5		
16	1.573	560	650	1.16	8.0	14.50	21.0		
16	1.574	555	645	1.16	8.0	15.50	21.0	1.25	1.18
16	1.577	550	640	1.16	9.5	15.50	20.5		
16	1.577	525	610	1.16	8.5	16.00	21.0		
16	1.582	540	625	1.16	10.0	16.00	20.5		
16	1.577	540	625	1.16	10.0	14.00	20.5		
16	1.576	550	640	1.16	9.5	15.50	21.0	1.35	1.05
16	1.582	555	645	1.16	8.0	15.00	21.0		
16	1.582	545	630	1.16	8.0	14.00	22.5		
16	1.586	560	650	1.16	9.5	14.50	21.0		
16	1.583	545	630	1.16	8.0	16.00	21.0		
16	1.586	560	650	1.16	10.0	14.00	21.5	1.35	1.05
16	1.591	550	640	1.16	8.0	14.00	22.0		
16	1.588	555	645	1.16	9.5	15.50	22.0		
16	1.592	540	625	1.16	8.0	14.00	23.0		
16	1.589	555	645	1.16	10.0	16.50	21.5		
16	1.594	560	650	1.16	8.0	14.00	22.0	1.35	1.05
16	1.586	550	640	1.16	9.5	15.00	22.5		
16	1.595	540	625	1.16	8.0	15.00	21.0		

16	1.596	555	645	1.16	8.0	15.50	21.0	1.45	1.07
16	1.580	550	640	1.16	8.0	16.50	20.0		
16	1.573	560	650	1.16	9.5	14.00	22.5		
16	1.582	555	645	1.16	10.5	15.50	20.5		
16	1.585	540	625	1.16	9.0	15.00	21.5		
16	1.585	550	640	1.16	10.0	16.00	21.0		
16	1.590	560	650	1.16	9.5	15.50	20.0		
16	1.595	545	630	1.16	8.0	16.00	20.0		
16	1.594	560	650	1.16	8.0	16.00	21.0		
16	1.595	560	650	1.16	10.0	15.00	20.5		
16	1.590	550	640	1.16	9.5	14.00	21.0	1.45	1.12
16	1.570	550	640	1.16	9.0	14.50	21.5		
16	1.569	540	625	1.16	10.5	17.00	23.0		
16	1.573	540	625	1.16	10.0	16.50	22.5		
16	1.566	525	610	1.16	10.0	16.00	22.5		
16	1.569	540	625	1.16	9.0	15.00	22.0		
16	1.575	555	645	1.16	8.5	14.00	20.0		
16	1.565	565	655	1.16	9.0	14.50	21.5		
16	1.564	550	640	1.16	9.5	16.50	22.5		
16	1.571	530	615	1.16	8.5	14.00	20.5		
16	1.575	535	620	1.16	9.0	14.50	21.5		
16	1.576	555	645	1.16	9.5	15.00	22.0		
16	1.570	565	655	1.16	8.5	14.00	20.5		
16	1.564	550	640	1.16	10.0	16.00	22.5		
16	1.573	550	640	1.16	10.0	16.50	23.0		
16	1.580	555	645	1.16	9.5	15.50	22.0		
16	1.572	550	640	1.16	9.0	15.00	21.0		
16	1.583	545	630	1.16	9.0	15.00	21.0		
16	1.577	550	640	1.16	9.0	15.00	21.5		
16	1.582	545	630	1.16	8.5	14.50	21.0		
16	1.580	550	640	1.16	9.0	15.50	22.0		
16	1.584	555	645	1.16	9.0	15.50	22.0		
16	1.583	550	640	1.16	9.0	15.00	21.5		
16	1.583	550	640	1.16	8.0	14.00	21.0		
16	1.580	555	645	1.16	8.5	15.50	22.0		
16	1.587	550	640	1.16	9.0	14.50	21.0		
16	1.585	545	630	1.16	8.0	15.00	21.5		
16	1.578	550	640	1.16	9.5	16.00	22.5		
16	1.579	555	645	1.16	9.0	15.50	22.0		
16	1.582	555	645	1.16	9.0	15.50	22.0		
16	1.581	535	620	1.16	8.5	14.00	20.5		
16	1.586	540	625	1.16	8.5	14.50	21.0		
16	1.583	540	625	1.16	8.0	13.50	20.5		
16	1.589	535	620	1.16	8.0	13.50	20.5		
16	1.584	540	625	1.16	8.5	14.50	21.0		
16	1.583	545	630	1.16	8.5	14.50	21.0		
16	1.582	530	615	1.16	8.0	14.00	20.5		
16	1.577	540	625	1.16	8.5	14.50	21.0		
16	1.583	555	645	1.16	9.5	15.50	22.0		
16	1.580	555	645	1.16	9.5	16.00	22.5		
16	1.579	550	640	1.16	9.0	14.50	21.0		
16	1.582	545	630	1.16	8.0	14.00	21.0		
16	1.577	555	645	1.16	9.0	15.00	21.5		
16	1.579	550	640	1.16	9.5	16.00	22.5		
16	1.583	545	630	1.16	8.5	14.50	21.0		
16	1.580	550	640	1.16	8.0	14.50	21.0		
16	1.589	555	645	1.16	9.0	15.50	22.0		
16	1.586	550	640	1.16	9.5	16.00	22.0		
16	1.583	545	630	1.16	9.0	15.00	21.5		
16	1.590	525	610	1.16	8.5	14.50	21.0		
16	1.586	545	630	1.16	8.0	14.50	21.0		
16	1.581	560	650	1.16	8.0	14.00	21.0		
16	1.586	540	625	1.16	8.5	14.50	21.0		
16	1.596	540	625	1.16	10.5	14.00	22.5		
16	1.594	560	650	1.16	9.5	14.00	20.0		
16	1.585	560	650	1.16	8.0	14.00	21.0		
16	1.588	545	630	1.16	9.5	15.50	20.5		
16	1.586	525	610	1.16	8.0	15.00	20.5		
16	1.592	545	630	1.16	8.0	14.00	22.5		
16	1.587	560	650	1.16	10.0	15.00	21.0		
16	1.596	560	650	1.16	9.0	15.00	21.0		
16	1.594	555	645	1.16	8.0	14.00	20.0		
16	1.594	550	640	1.16	9.0	14.00	22.5		
16	1.593	560	650	1.16	9.5	16.00	22.0		
16	1.591	550	640	1.16	8.0	15.00	22.0		
16	1.592	550	640	1.16	10.5	15.50	22.0		
								1.45	0.85

16	1.593	550	640	1.16	9.0	15.00	21.5	1.30	0.83
16	1.595	540	625	1.16	8.0	15.00	23.0		
16	1.585	540	625	1.16	10.0	15.00	21.5	1.30	0.83
16	1.586	545	630	1.16	9.0	14.00	22.5		
16	1.587	555	645	1.16	8.5	14.00	20.0	1.40	0.95
16	1.585	550	640	1.16	9.0	14.50	21.5		
16	1.592	560	650	1.16	8.5	14.00	21.0	1.30	1.00
16	1.578	555	645	1.16	9.0	14.50	21.5		
16	1.586	555	645	1.16	9.5	15.00	22.0	1.30	1.00
16	1.591	560	650	1.16	8.5	14.00	21.0		
16	1.590	555	645	1.16	10.0	16.00	22.5	1.35	1.05
16	1.578	560	650	1.16	8.5	14.00	20.5		
16	1.582	560	650	1.16	8.5	14.00	20.5	1.35	1.05
16	1.581	560	650	1.16	8.5	14.00	21.0		
16	1.583	540	625	1.16	9.5	15.00	22.0	1.30	1.00
16	1.587	560	650	1.16	8.5	14.00	21.0		
16	1.587	560	650	1.16	9.0	14.50	21.5	1.40	0.95
16	1.589	555	645	1.16	9.5	15.00	22.0		
16	1.580	540	625	1.16	8.5	14.00	21.0	1.30	1.00
16	1.589	550	640	1.16	9.5	15.50	22.0		
16	1.583	555	645	1.16	10.0	16.50	22.5	1.40	0.95
16	1.590	535	620	1.16	8.5	15.00	21.0		
16	1.592	535	620	1.16	9.5	15.50	22.0	1.30	1.00
16	1.580	555	645	1.16	9.5	14.50	21.5		
16	1.582	560	650	1.16	9.0	14.00	21.0	1.30	1.00
16	1.566	530	615	1.16	8.5	14.00	20.5		
16	1.569	550	640	1.16	10.0	16.50	23.0	1.35	0.90
16	1.568	560	650	1.16	9.5	16.00	22.5		
16	1.573	555	645	1.16	9.0	15.50	22.0	1.35	0.90
16	1.576	550	640	1.16	9.0	15.50	22.0		
16	1.579	555	645	1.16	9.0	15.50	22.0	1.30	1.03
16	1.578	555	645	1.16	9.5	16.00	22.0		
16	1.587	550	640	1.16	9.5	15.50	22.0	1.30	1.03
16	1.584	555	645	1.16	9.5	16.50	22.5		
16	1.586	555	645	1.16	10.5	16.50	22.5	1.25	1.06
16	1.573	560	650	1.16	9.5	16.00	22.0		
16	1.582	550	640	1.16	9.5	16.00	22.0	1.35	0.80
16	1.585	560	650	1.16	9.5	16.00	22.0		
16	1.589	545	630	1.16	9.0	15.00	21.0	1.40	0.95
16	1.591	545	630	1.16	9.0	15.00	21.0		
16	1.577	550	640	1.16	9.5	16.00	22.0	1.40	0.95
16	1.580	535	620	1.16	9.0	15.00	21.0		
16	1.572	545	630	1.16	9.0	15.00	21.0	1.40	0.85
16	1.580	535	620	1.16	8.5	14.50	20.5		
16	1.583	560	650	1.16	9.5	16.00	22.5	1.35	0.80
16	1.588	560	650	1.16	9.0	14.50	21.0		
16	1.589	560	650	1.16	9.0	15.00	21.5	1.35	0.90
16	1.585	545	630	1.16	8.5	14.50	21.0		
16	1.571	540	625	1.16	9.0	14.50	21.0	1.30	0.75
16	1.573	540	625	1.16	8.5	14.50	21.0		
16	1.582	555	645	1.16	9.5	15.50	22.0	1.30	0.75
16	1.578	540	625	1.16	8.5	14.50	21.0		
16	1.589	560	650	1.16	9.0	15.00	21.5	1.30	0.75
16	1.586	560	650	1.16	8.5	14.50	21.0		
16	1.587	545	630	1.16	9.5	15.50	22.0	1.30	0.85
16	1.585	545	630	1.16	9.0	15.50	22.0		
16	1.586	550	640	1.16	9.0	15.50	22.0	1.30	0.85
16	1.590	560	650	1.16	9.0	15.00	20.0		
16	1.590	550	640	1.16	8.0	14.00	20.0	1.30	0.85
16	1.592	540	625	1.16	10.5	14.00	22.5		
16	1.592	560	650	1.16	8.0	15.50	20.5	1.30	0.85
16	1.580	540	625	1.16	10.0	15.50	22.5		
16	1.583	545	630	1.16	8.0	14.00	20.0	1.35	0.90
16	1.583	545	630	1.16	9.5	16.00	21.0		
16	1.585	540	625	1.16	10.5	15.00	21.0	1.30	0.75
16	1.582	530	615	1.16	8.0	14.00	22.5		
16	1.588	535	620	1.16	10.0	15.00	22.5	1.30	0.75
16	1.589	555	645	1.16	8.0	14.00	21.0		
16	1.592	545	630	1.16	9.5	15.50	20.0	1.30	0.75
16	1.583	550	640	1.16	8.0	14.00	22.0		
16	1.592	550	640	1.16	9.0	14.00	22.5	1.30	0.85
16	1.592	560	650	1.16	10.0	14.00	22.0		
16	1.595	550	640	1.16	8.0	14.00	21.0	1.30	0.85
16	1.596	560	650	1.16	8.0	14.00	20.0		
16	1.594	545	630	1.16	9.5	15.50	20.0	1.30	0.85
16	1.596	555	645	1.16	8.0	14.00	22.0		

16	1.595	570	660	1.16	8.5	16.50	21.0		
16	1.591	580	675	1.16	9.5	15.00	22.5	1.35	0.95
16	1.595	570	660	1.16	10.0	15.50	22.5		
16	1.593	560	650	1.16	10.0	15.50	20.0		
16	1.595	560	650	1.16	8.0	15.00	21.0		
16	1.595	560	650	1.16	9.0	15.00	22.0		
16	1.574	545	630	1.16	9.0	15.00	22.0	1.40	0.85
16	1.572	550	640	1.16	10.0	14.00	22.0		
16	1.578	555	645	1.16	10.0	14.50	22.0		
16	1.572	550	640	1.16	9.0	14.50	22.5	1.35	0.90
16	1.575	555	645	1.16	9.0	14.50	22.0		
16	1.578	550	640	1.16	9.5	15.00	22.0		
16	1.588	530	615	1.16	9.0	14.50	20.0		
16	1.588	535	620	1.16	9.0	14.50	22.5		
16	1.588	545	630	1.16	9.5	14.00	21.0		
16	1.588	560	650	1.16	9.0	15.50	21.0	1.40	0.85
16	1.588	560	650	1.16	9.5	16.00	20.5		
16	1.586	560	650	1.16	9.0	15.00	21.0		
16	1.592	550	640	1.16	9.0	15.00	20.0		