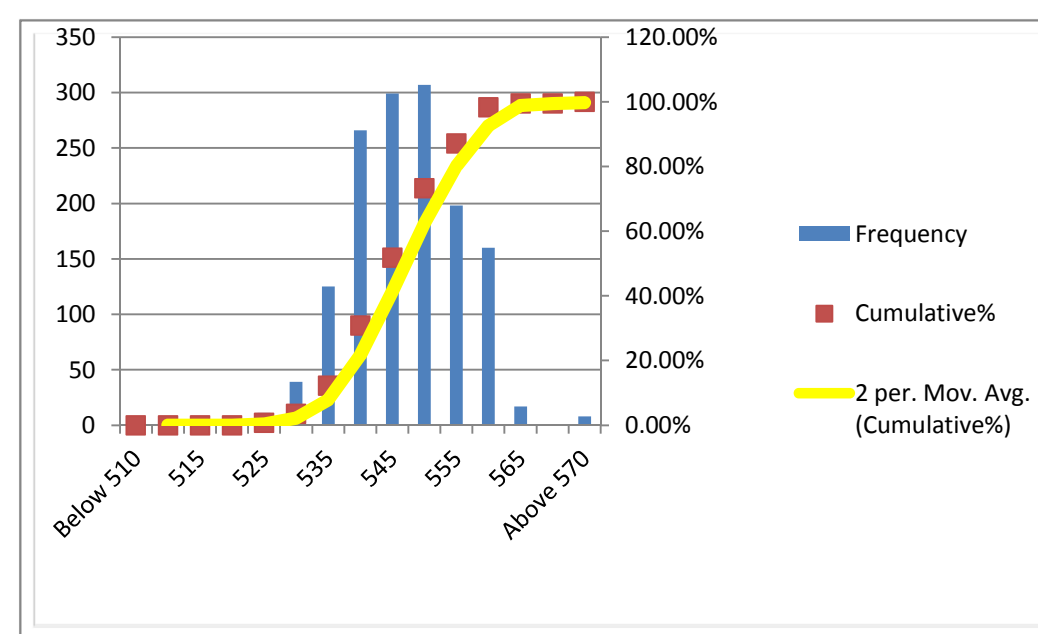


Campaign Length: 20.06.16 to 27.06.16  
 Total Production: 15053.055 MT  
 Billet Rolled: RIN#247,JSP#245,SML#235,YISH#249,NLM#250,SAL#251  
 Product: Xtreme 500W (2x16 mm)

YIELD STRENGTH	
Mean	547.248
Median	545
Mode	550
Std. Dev.	8.803
Min	525
Max	600
Count	1430

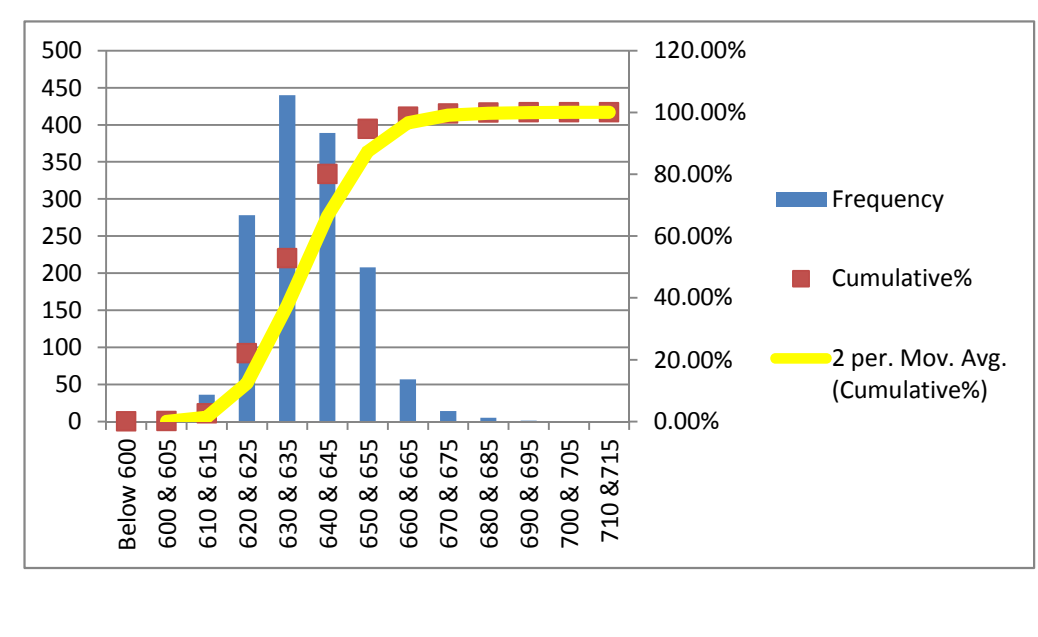
Bin	Frequency	%	Cumulative%
Below 510	0	0.00%	0.00%
510	0	0.00%	0.00%
515	0	0.00%	0.00%
520	0	0.00%	0.00%
525	11	0.77%	0.77%
530	39	2.73%	3.50%
535	125	8.74%	12.24%
540	266	18.60%	30.84%
545	299	20.91%	51.75%
550	307	21.47%	73.22%
555	198	13.85%	87.06%
560	150	10.46%	97.52%
565	17	1.19%	98.71%
570	0	0.00%	98.71%
Above 570	8	0.56%	100.00%
<b>Total</b>	<b>1430</b>		



**MINIMUM REQUIREMENTS**  
 As per ISO 6935-2: 500 Mpa  
 As per ASTM A-615: 420 Mpa

ULTIMATE STRENGTH	
Mean	637.339
Median	635
Mode	640
Std. Dev.	12.22
Min	605
Max	690
Count	1430

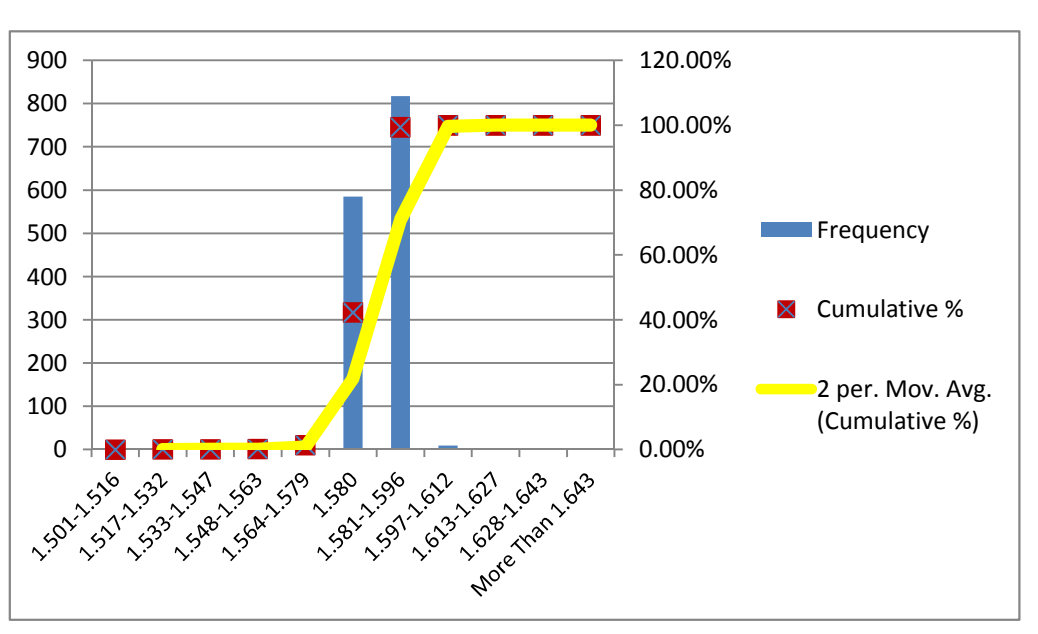
Bin	Frequency	%	Cumulative%
Below 600	0	0.00%	0.00%
600 & 605	2	0.14%	0.14%
610 & 615	36	2.52%	2.66%
620 & 625	278	19.44%	22.10%
630 & 635	440	30.77%	52.87%
640 & 645	389	27.20%	80.07%
650 & 655	208	14.55%	94.62%
660 & 665	57	3.99%	98.60%
670 & 675	14	0.98%	99.58%
680 & 685	5	0.35%	99.93%
690 & 695	1	0.07%	100.00%
700 & 705	0	0.00%	100.00%
710 & 715	0	0.00%	100.00%
720 & 725	0	0.00%	100.00%
730 & 735	0	0.00%	100.00%
Above 735	0	0.00%	100.00%
<b>Total</b>	<b>1430</b>		



**MINIMUM REQUIREMENTS**  
 As per ISO 6935-2: 575 Mpa  
 As per ASTM A-615: 620 Mpa

UNIT WEIGHT	
Mean	1.581
Median	1.582
Mode	1.584
Std. Dev.	0.007
Min	1.531
Max	1.605
Count	1430

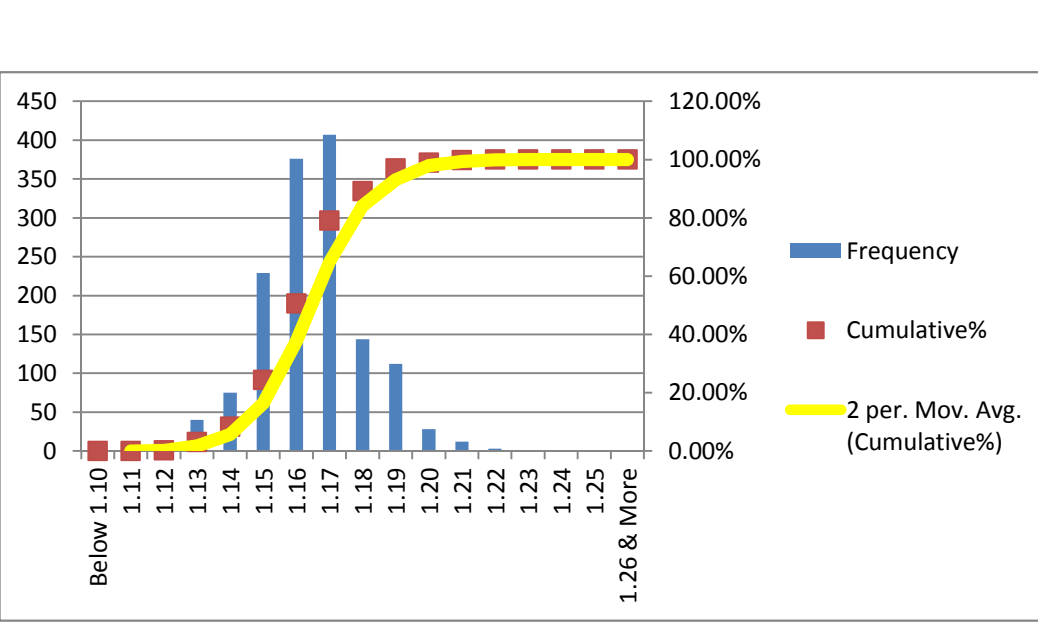
Bin	Frequency	%	Cumulative%
Less Than 1.501	0	0.00%	0.00%
-5%	1.501-1.516	0	0.00%
-4%	1.517-1.532	1	0.07%
-3%	1.533-1.547	0	0.07%
-2%	1.548-1.563	1	0.07%
-1%	1.564-1.579	17	1.19%
0%	1.580-1.588	585	40.91%
1%	1.581-1.596	817	57.13%
2%	1.597-1.612	9	0.63%
3%	1.613-1.627	0	100.00%
4%	1.628-1.643	0	100.00%
5%	More Than 1.643	0	100.00%
<b>Total</b>	<b>1430</b>		



**MINIMUM REQUIREMENTS**  
 As per ISO 6935-2: ± 5%  
 As per ASTM A-615: -6%

T/Y RATIO	
Mean	1.165
Median	1.116
Mode	1.116
Std. Dev.	0.016
Min	1.112
Max	1.22
Count	1430

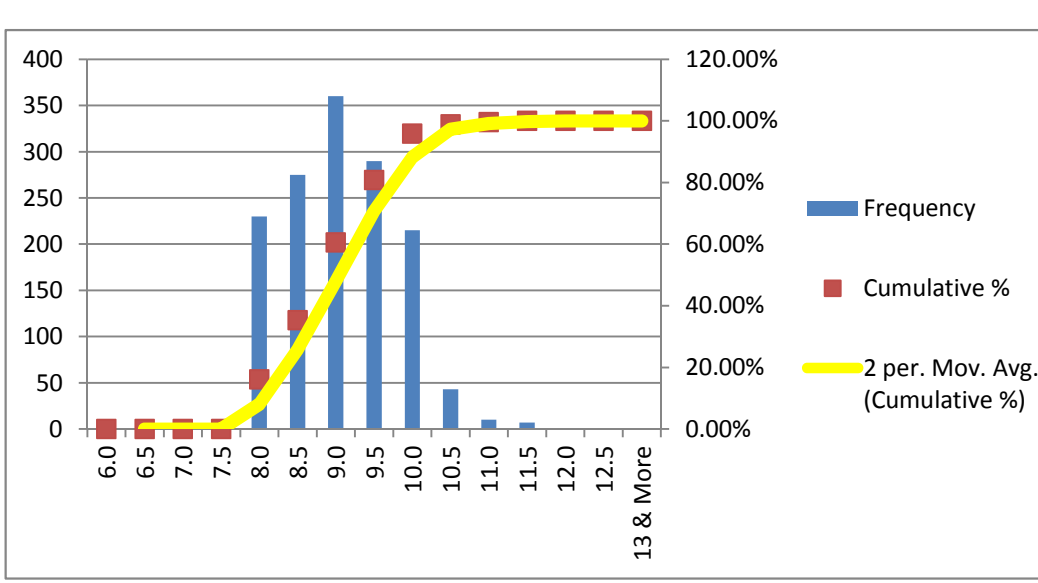
Bin	Frequency	%	Cumulative%
Below 1.10	0	0.00%	0.00%
1.11	0	0.00%	0.00%
1.12	4	0.28%	0.28%
1.13	40	2.80%	3.08%
1.14	75	5.24%	8.32%
1.15	229	16.01%	24.34%
1.16	376	26.29%	50.63%
1.17	407	28.46%	79.09%
1.18	144	10.07%	89.16%
1.19	112	7.83%	96.99%
1.20	28	1.96%	98.95%
1.21	12	0.84%	99.79%
1.22	3	0.21%	100.00%
1.23	0	0.00%	100.00%
1.24	0	0.00%	100.00%
1.25	0	0.00%	100.00%
1.26 & More	0	0.00%	100.00%
<b>Total</b>	<b>1430</b>		



**MINIMUM REQUIREMENTS**  
 As per ISO 6935-2: T/Y: 1.15  
 As per ASTM A-615: Not Required

ELN. AT MAX. FORCE (Agt)(GI-200 mm)	
Mean	9.066
Median	9.0
Mode	9.0
Std. Dev.	0.730
Min	8.0
Max	11.5
Count	1430

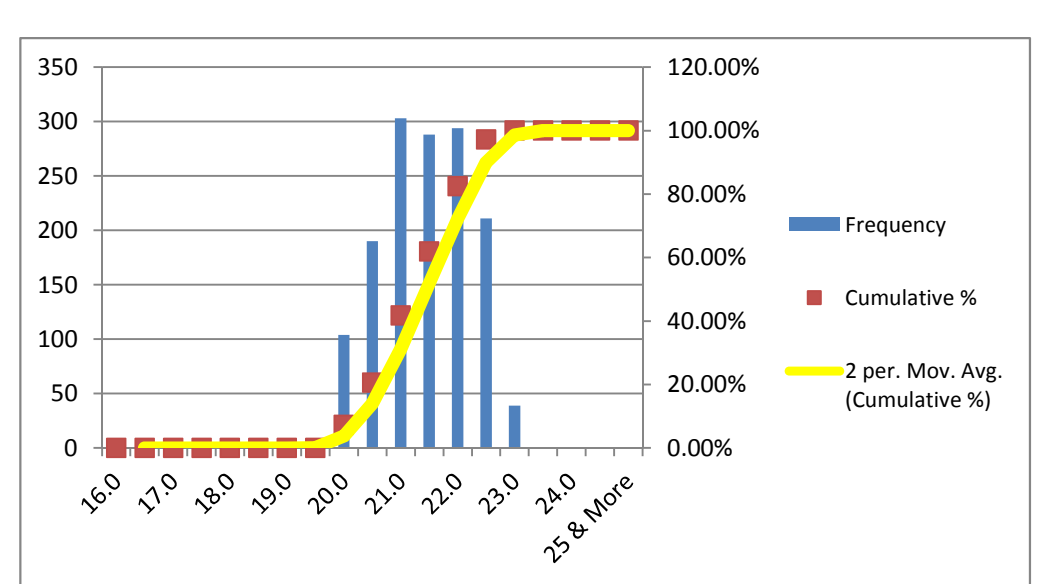
Bin	Frequency	%	Cumulative %
6.0	0	0.00%	0.00%
6.5	0	0.00%	0.00%
7.0	0	0.00%	0.00%
7.5	0	0.00%	0.00%
8.0	230	16.08%	16.08%
8.5	275	19.23%	35.31%
9.0	360	25.17%	60.49%
9.5	290	20.28%	80.77%
10.0	215	15.03%	95.80%
10.5	43	3.01%	98.81%
11.0	10	0.70%	99.51%
11.5	7	0.49%	100.00%
12.0	0	0.00%	100.00%
12.5	0	0.00%	100.00%
13 & More	0	0.00%	100.00%
<b>Total</b>	<b>1430</b>		



**MINIMUM REQUIREMENTS**  
 As per ISO 6935-2: 7%  
 As per ASTM A-615: Not Required

ELN. AFTER FRACTURE (A5)(GL-50)	
Mean	21.442
Median	21.5
Mode	21.0
Std. Dev.	0.781
Min	19.5
Max	23.0
Count	1430

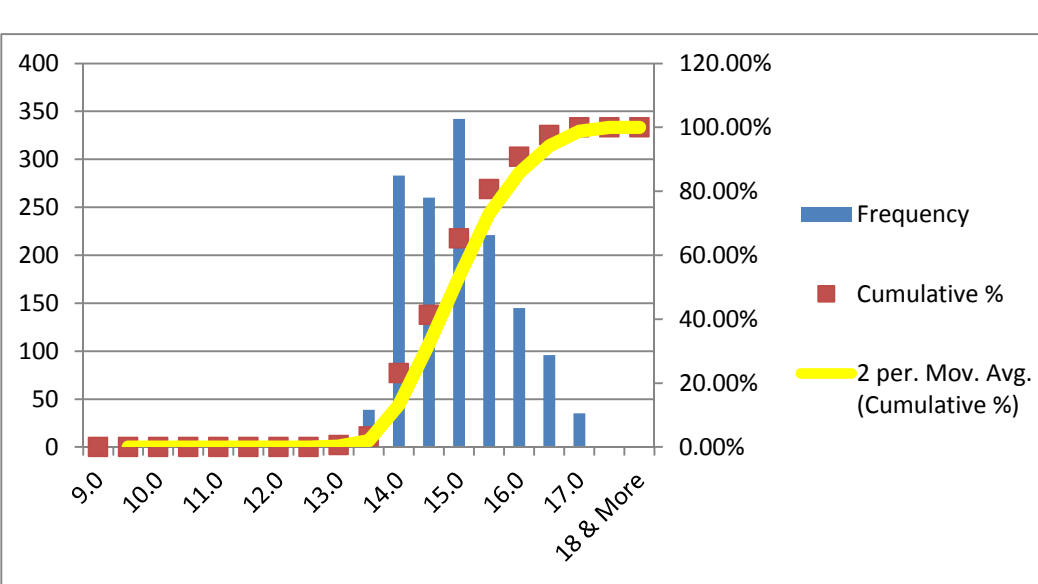
Bin	Frequency	%	Cumulative %
16.0	0	0.00%	0.00%
16.5	0	0.00%	0.00%
17.0	0	0.00%	0.00%
17.5	0	0.00%	0.00%
18.0	0	0.00%	0.00%
18.5	0	0.00%	0.00%
19.0	0	0.00%	0.00%
19.5	1	0.07%	0.07%
20.0	104	7.27%	7.34%
20.5	190	13.29%	20.63%
21.0	303	21.19%	41.82%
21.5	288	20.14%	61.96%
22.0	294	20.56%	82.52%
22.5	211	14.76%	97.27%
23.0	39	2.73%	100.00%
23.5	0	0.00%	100.00%
24.0	0	0.00%	100.00%
24.5	0	0.00%	100.00%
25 & More	0	0.00%	100.00%
<b>Total</b>	<b>1430</b>		



**MINIMUM REQUIREMENTS**  
 As per ISO 6935-2: 14%

ELN. AFTER FRACTURE (A)(GL-203.2 mm)	
Mean	14.986
Median	15.0
Mode	15.0
Std. Dev.	0.848
Min	13.0
Max	17.0
Count	1430

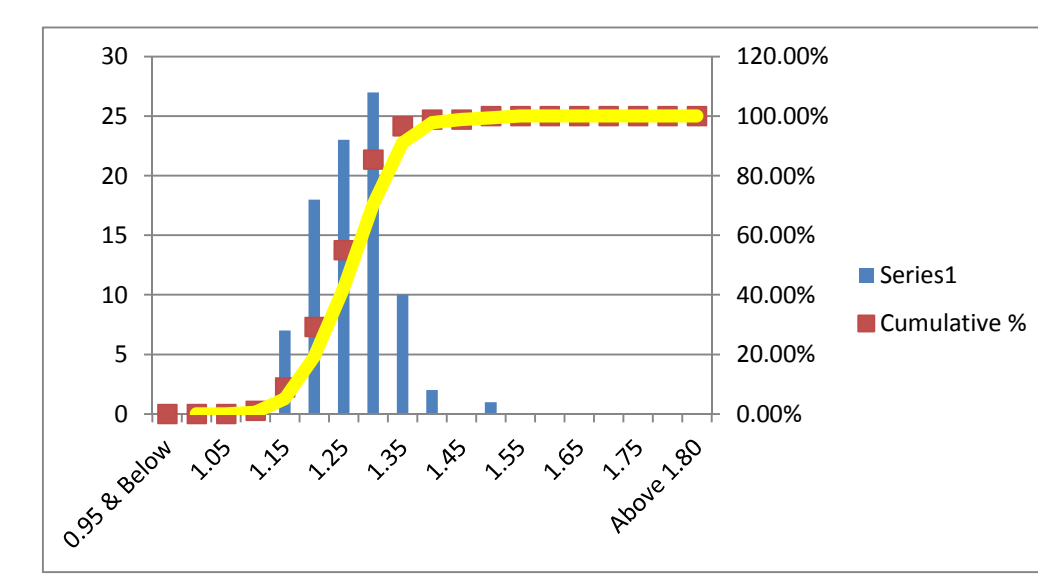
Bin	Frequency	%	Cumulative %
9.0	0	0.00%	0.00%
9.5	0	0.00%	0.00%
10.0	0	0.00%	0.00%
10.5	0	0.00%	0.00%
11.0	0	0.00%	0.00%
11.5	0	0.00%	0.00%
12.0	0	0.00%	0.00%
12.5	0	0.00%	0.00%
13.0	9	0.63%	0.63%
13.5	39	2.73%	3.36%
14.0	283	19.79%	23.15%
14.5	260	18.18%	41.33%
15.0	342	23.92%	65.24%
15.5	221	15.45%	80.70%
16.0	145	10.14%	90.84%
16.5	96	6.71%	97.55%
17.0	35	2.45%	100.00%
17.5	0	0.00%	100.00%
18 & More	0	0.00%	100.00%
<b>Total</b>	<b>1430</b>		



**MINIMUM REQUIREMENTS**  
 As per ASTM A-615: 9%

TRANSVERSE RIB HEIGHT	
Mean	1.263
Median	1.25
Mode	1.3
Std. Dev.	0.067
Min	1.10
Max	1.50
Count	89

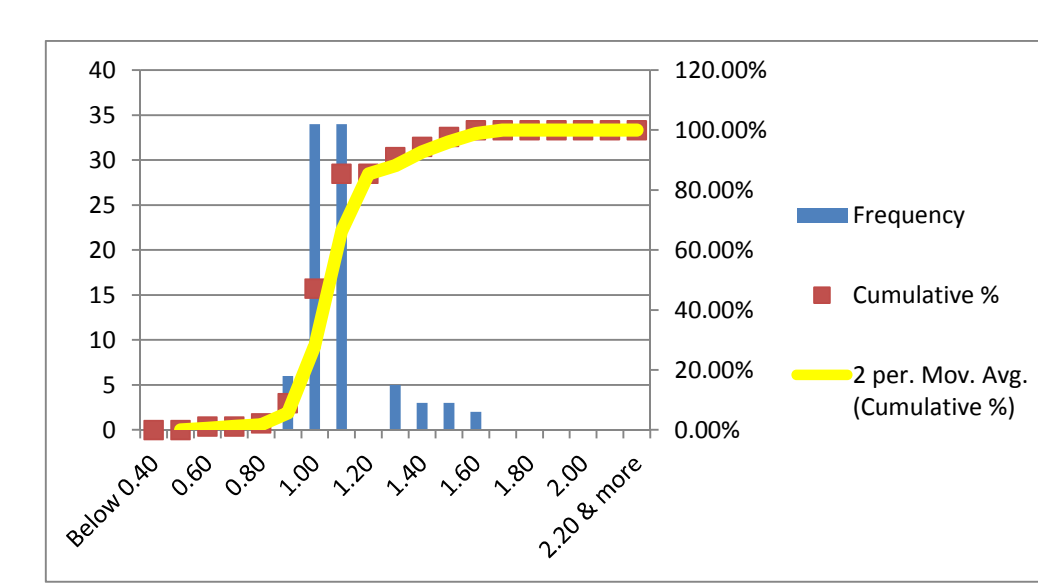
Bin	Frequency	%	Cumulative %
0.95 & Below	0	0.00%	0.00%
1.00	0	0.00%	0.00%
1.05	0	0.00%	0.00%
1.10	1	1.12%	1.12%
1.15	7	7.87%	8.99%
1.20	18	20.22%	29.21%
1.25	23	25.84%	55.06%
1.30	27	30.34%	85.39%
1.35	10	11.24%	96.63%
1.40	2	2.25%	98.88%
1.45	0	0.00%	98.88%
1.50	1	1.12%	100.00%
1.55	0	0.00%	100.00%
1.60	0	0.00%	100.00%
1.65	0	0.00%	100.00%
1.70	0	0.00%	100.00%
1.75	0	0.00%	100.00%
1.80	0	0.00%	100.00%
Above 1.80	0	0.00%	100.00%
<b>Total</b>	<b>89</b>		



**MINIMUM REQUIREMENTS**  
 As per ISO 6935-2: 1.04 mm  
 As per ASTM A-615: 0.71 mm

LONGITUDINAL RIB HEIGHT	
Mean	1.025
Median	1.00
Mode	1.0
Std. Dev.	0.161
Min	0.55
Max	1.54
Count	89

Bin	Frequency	%	Cumulative %
Below 0.40	0	0.00%	0.00%
0.50	0	0.00%	0.00%
0.60	1	1.12%	1.12%
0.70	0	0.00%	1.12%
0.80	1	1.12%	2.25%
0.90	6	6.74%	8.99%
1.00	34	38.20%	47.19%
1.10	34	38.20%	85.39%
1.20	0	0.00%	85.39%
1.30	5	5.62%	91.01%
1.40	3	3.37%	94.38%
1.50	3	3.37%	97.75%
1.60	2	2.25%	100.00%
1.70	0	0.00%	100.00%
1.80	0	0.00%	100.00%
1.90	0	0.00%	100.00%
2.00	0	0.00%	100.00%
2.10	0	0.00%	100.00%
2.20 & more	0	0.00%	100.00%
<b>Total</b>	<b>89</b>		



**MAXIMUM REQUIREMENTS**  
 As per ISO 6935-2: 2.40 mm

**BEND TEST:**  
 ALL THE SAMPLES IN THIS CAMPAIGN PASSED THE BEND TEST MAINTAINING MANDREL DIA 3D

**MINIMUM REQUIREMENTS**  
 As per ISO 6935-2: 3D  
 As per ASTM A-615: 3.5D

**REBEND TEST:**  
 ALL THE SAMPLES IN THIS CAMPAIGN PASSED THE REBEND TEST MAINTAINING MANDREL DIA 4D

**MINIMUM REQUIREMENTS**  
 As per ISO 6935-2: 5D  
 As per ASTM A-615: Not Required

Nominal Diameter D	Unit Weight	Yield or Proof Strength R <sub>eH</sub>	Ultimate Tensile Strength R <sub>m</sub>	T/Y Ratio	% Total Elongation at Maximum Force A <sub>gt</sub>	% Elongation after Fracture A	% Elongation after Fracture A	Height of Transverse Rib	Height of Longitudinal Rib
(mm)	(Kg/m)	(MPa)	(MPa)		GL:200mm	GL: 203.2 mm	GL: 5D	mm	mm
16	1.570	590	680	1.15	9.0	15.0	22.0	1.15	1.54
16	1.573	600	685	1.14	8.5	14.5	20.5		
16	1.574	590	680	1.15	9.5	16.0	21.0		
16	1.580	600	690	1.15	8.5	15.0	21.5		
16	1.575	580	665	1.15	9.0	15.0	22.0		
16	1.578	580	670	1.16	8.5	14.5	21.0		
16	1.578	560	660	1.18	9.0	15.5	22.0		
16	1.582	560	660	1.18	9.5	15.5	22.5		
16	1.554	550	645	1.17	9.0	15.0	22.0		
16	1.558	550	645	1.17	10.0	16.5	22.5		
16	1.585	540	625	1.16	9.0	15.0	21.0		
16	1.578	540	640	1.19	9.5	15.5	20.0		
16	1.588	560	650	1.16	10.0	15.5	21.0		
16	1.579	555	655	1.18	10.0	16.0	20.5		
16	1.588	555	660	1.19	10.5	16.0	21.0		
16	1.580	545	640	1.17	9.5	15.5	21.0		
16	1.588	545	635	1.17	9.0	15.0	21.0		
16	1.580	545	640	1.17	9.5	15.5	20.0		
16	1.589	540	620	1.15	8.5	14.5	22.5		
16	1.584	550	635	1.15	9.0	15.0	21.5		
16	1.584	540	635	1.18	9.0	15.0	22.0		
16	1.574	530	620	1.17	8.5	14.5	22.5		
16	1.584	555	650	1.17	10.0	15.5	20.5		
16	1.575	540	645	1.19	10.0	15.5	21.0		
16	1.585	540	640	1.19	9.5	15.5	20.0		
16	1.576	555	640	1.15	9.5	15.5	20.5		
16	1.580	540	640	1.19	9.5	15.5	21.0		
16	1.578	540	625	1.16	8.5	14.5	21.0		
16	1.578	555	630	1.14	9.0	15.0	20.5		
16	1.580	555	625	1.13	9.0	15.0	21.0		
16	1.576	540	615	1.14	8.5	14.5	20.0		
16	1.582	540	630	1.17	9.0	15.0	22.5		
16	1.588	540	630	1.17	9.0	15.0	20.5		
16	1.580	535	625	1.17	8.5	14.5	23.0		
16	1.584	535	620	1.16	8.5	14.5	21.5		
16	1.582	535	625	1.17	9.0	15.0	21.0		
16	1.590	530	615	1.16	8.5	14.5	20.5		
16	1.584	545	625	1.15	8.5	14.5	21.0		
16	1.590	550	620	1.13	8.5	14.5	20.0		
16	1.585	550	625	1.14	8.5	14.5	21.0		
16	1.591	545	640	1.17	9.5	15.5	22.5		
16	1.586	550	645	1.17	10.0	16.0	22.0		
16	1.592	560	650	1.16	10.0	16.0	20.5		
16	1.584	555	655	1.18	10.5	16.0	22.5		
16	1.592	545	650	1.19	10.0	16.0	20.0		
16	1.588	545	640	1.17	9.5	15.5	21.0		
16	1.580	550	640	1.16	9.5	15.5	22.0		
16	1.576	545	635	1.17	9.0	15.0	20.0		
16	1.584	550	650	1.18	10.0	15.5	22.5		
16	1.577	545	645	1.18	10.0	16.0	22.0		
16	1.584	535	635	1.19	9.0	15.0	20.0		
16	1.583	550	650	1.18	10.0	16.0	21.0		
16	1.584	545	650	1.19	10.0	16.0	21.0		
16	1.582	555	650	1.17	10.0	16.0	21.5		
16	1.580	545	640	1.17	9.5	15.5	22.5		
16	1.577	535	620	1.16	8.5	14.5	21.0		
16	1.584	550	635	1.15	9.0	15.0	23.0		
16	1.576	540	635	1.18	9.0	15.0	22.5		
16	1.582	540	640	1.19	10.0	16.0	21.0		
16	1.587	550	645	1.17	10.0	16.0	22.0		
16	1.584	540	635	1.18	9.0	15.0	20.0		
16	1.576	540	640	1.19	9.5	15.5	22.5		
16	1.582	550	635	1.15	9.0	15.0	23.0		
16	1.585	530	625	1.18	8.5	14.5	21.0		
16	1.569	545	620	1.14	8.5	14.5	20.0		
16	1.572	545	630	1.16	9.0	15.0	21.0		
16	1.570	545	640	1.17	9.5	15.5	20.0		
16	1.574	550	650	1.18	10.0	16.0	20.0		
16	1.568	550	655	1.19	10.0	16.0	22.0		
16	1.577	555	660	1.19	10.5	16.0	21.5		
16	1.569	540	620	1.15	8.5	14.5	21.0		

0

16	1.574	540	620	1.15	8.5	14.5	21.5	1.30	1.20
16	1.568	530	620	1.17	8.5	14.5	20.0		
16	1.577	535	625	1.17	9.0	15.0	22.0		
16	1.570	535	625	1.17	9.0	15.0	22.5		
16	1.574	560	645	1.15	10.0	16.0	21.0		
16	1.572	535	630	1.18	9.0	15.5	22.5		
16	1.578	530	620	1.17	8.5	14.5	21.5		
16	1.573	545	620	1.14	8.5	14.5	20.0		
16	1.579	545	630	1.16	9.0	15.0	21.5		
16	1.580	545	630	1.16	9.0	15.0	21.5		
16	1.598	540	625	1.16	8.5	14.5	22.5		
16	1.574	540	620	1.15	9.0	15.0	21.0		
16	1.574	540	630	1.17	9.0	15.0	20.0		
16	1.571	550	635	1.15	9.5	15.5	21.0		
16	1.573	540	630	1.17	9.0	15.0	22.0		
16	1.580	555	640	1.15	10.0	14.5	20.0		
16	1.577	555	640	1.15	8.0	16.0	20.0		
16	1.580	555	645	1.16	9.5	15.5	22.5		
16	1.579	560	650	1.16	8.0	14.0	21.0		
16	1.582	555	640	1.15	9.0	15.0	20.5		
16	1.579	540	630	1.17	10.0	14.0	21.0		
16	1.588	545	635	1.17	8.0	15.5	20.5		
16	1.582	545	630	1.16	9.5	14.5	21.0		
16	1.578	545	640	1.17	10.0	15.0	21.0		
16	1.577	540	615	1.14	10.0	16.5	20.5		
16	1.584	535	610	1.14	8.0	15.5	20.0		
16	1.580	535	620	1.16	9.5	16.5	22.5		
16	1.571	560	645	1.15	8.0	15.5	20.0		
16	1.577	560	625	1.12	9.0	14.5	21.0		
16	1.572	545	620	1.14	10.0	15.0	20.5		
16	1.579	540	630	1.17	8.0	15.0	22.5		
16	1.572	545	630	1.16	9.5	16.0	20.5		
16	1.576	545	620	1.14	8.0	15.0	21.0		
16	1.578	540	625	1.16	9.5	16.5	20.5		
16	1.580	545	630	1.16	8.0	15.0	22.5		
16	1.577	535	625	1.17	10.0	16.0	21.0		
16	1.582	535	625	1.17	8.0	14.5	21.0		
16	1.579	530	620	1.17	9.0	14.5	20.5		
16	1.583	550	620	1.13	10.0	15.0	22.5		
16	1.579	550	630	1.15	8.0	16.5	21.0		
16	1.588	545	625	1.15	9.5	15.5	20.0		
16	1.572	540	630	1.17	8.5	16.5	21.0		
16	1.582	545	625	1.15	9.5	14.5	20.5		
16	1.570	540	610	1.13	8.0	15.0	21.0		
16	1.588	555	640	1.15	8.5	16.5	22.5		
16	1.572	555	645	1.16	9.5	15.0	20.5		
16	1.583	530	610	1.15	8.0	16.5	22.0		
16	1.574	535	615	1.15	9.5	15.5	21.0		
16	1.583	535	615	1.15	8.0	14.5	20.0		
16	1.577	545	630	1.16	9.5	15.0	22.0		
16	1.586	560	635	1.13	8.0	16.5	20.0		
16	1.573	560	630	1.13	9.5	15.0	22.5		
16	1.584	550	640	1.16	8.0	16.5	20.0		
16	1.577	550	640	1.16	9.5	14.5	21.0		
16	1.583	540	630	1.17	8.0	15.5	22.0		
16	1.589	540	625	1.16	9.5	16.0	20.5		
16	1.576	550	625	1.14	8.0	15.0	20.0		
16	1.590	550	630	1.15	9.0	16.5	22.5		
16	1.591	545	630	1.16	8.0	14.5	22.0		
16	1.580	545	630	1.16	9.0	15.5	21.0		
16	1.584	550	630	1.15	10.0	15.5	22.0		
16	1.572	555	640	1.15	8.0	14.5	20.0		
16	1.583	550	635	1.15	9.5	16.0	21.5		
16	1.574	535	615	1.15	8.0	15.5	21.0		
16	1.586	550	620	1.13	9.5	15.5	22.5		
16	1.577	535	625	1.17	8.0	16.5	22.5		
16	1.588	545	640	1.17	10.0	14.5	22.0		
16	1.579	550	635	1.15	8.0	16.5	20.0		
16	1.584	555	635	1.14	9.5	14.5	20.0		
16	1.580	550	640	1.16	8.0	16.5	21.0		
16	1.585	555	645	1.16	9.5	15.5	22.0		
16	1.584	550	640	1.16	8.0	15.5	20.0		
16	1.586	540	630	1.17	9.0	14.5	21.5		
16	1.580	545	635	1.17	8.0	16.0	20.0		
16	1.582	545	635	1.17	9.0	15.5	22.0		
16	1.584	530	620	1.17	10.0	16.5	22.5		

16	1.589	530	620	1.17	8.0	14.5	20.0	1.35	1.38
16	1.569	585	660	1.13	10.0	15.5	21.5		
16	1.570	580	660	1.14	8.0	16.5	21.0		
16	1.569	560	650	1.16	9.0	14.5	20.0		
16	1.574	560	630	1.13	10.0	15.5	21.0		
16	1.572	565	645	1.14	8.0	16.5	21.0		
16	1.577	550	630	1.15	9.5	14.5	20.5		
16	1.573	560	645	1.15	8.0	15.5	20.5		
16	1.584	540	620	1.15	10.0	15.5	20.5		
16	1.577	540	620	1.15	8.0	14.5	20.5		
16	1.584	545	620	1.14	9.5	16.5	22.0		
16	1.573	545	625	1.15	8.0	14.5	20.5		
16	1.582	540	620	1.15	10.0	16.0	21.0		
16	1.576	530	635	1.20	9.5	15.0	20.5		
16	1.584	535	625	1.17	8.0	16.0	21.0		
16	1.573	525	620	1.18	10.0	15.0	20.5		
16	1.586	555	640	1.15	9.0	14.5	21.5		
16	1.573	545	650	1.19	10.0	15.5	21.0		
16	1.586	550	635	1.15	8.0	16.0	21.0		
16	1.585	540	620	1.15	9.5	15.0	22.0		
16	1.580	540	620	1.15	9.0	14.5	21.5		
16	1.574	545	630	1.16	10.0	16.0	22.5		
16	1.567	540	625	1.16	9.5	15.0	22.0		
16	1.577	540	625	1.16	10.5	16.0	22.5		
16	1.571	540	620	1.15	9.0	14.5	21.5		
16	1.578	555	630	1.14	9.5	15.5	22.0		
16	1.573	550	630	1.15	10.0	16.5	22.5		
16	1.581	535	610	1.14	8.5	14.0	21.0		
16	1.576	535	610	1.14	8.0	13.5	20.5		
16	1.595	535	610	1.14	9.0	14.0	21.0		
16	1.590	535	610	1.14	8.0	14.0	20.0		
16	1.573	540	625	1.16	9.0	15.0	21.5		
16	1.568	540	620	1.15	10.0	16.5	22.5		
16	1.582	545	630	1.16	10.5	16.5	23.0		
16	1.575	550	630	1.15	10.0	16.0	22.5		
16	1.586	545	625	1.15	9.5	15.5	22.0		
16	1.581	535	615	1.15	9.0	14.5	21.5		
16	1.575	555	645	1.16	9.0	15.0	21.5		
16	1.572	560	640	1.14	10.0	16.5	22.5		
16	1.579	550	630	1.15	9.5	15.0	22.0		
16	1.574	550	625	1.14	10.0	16.0	22.5		
16	1.580	545	625	1.15	9.5	15.0	22.0		
16	1.576	550	630	1.15	10.0	16.5	22.5		
16	1.580	555	630	1.14	8.5	14.0	21.0		
16	1.575	560	635	1.13	10.0	16.5	22.5		
16	1.583	555	640	1.15	9.5	15.0	22.0		
16	1.580	550	625	1.14	8.5	16.0	22.5		
16	1.585	535	615	1.15	8.0	14.0	21.0		
16	1.583	530	615	1.16	8.5	14.0	20.5		
16	1.587	555	660	1.19	9.5	16.5	22.5		
16	1.584	540	625	1.16	9.0	15.5	22.0		
16	1.591	545	625	1.15	9.0	15.0	22.0		
16	1.588	540	625	1.16	10.0	16.5	22.5		
16	1.568	540	625	1.16	10.5	17.0	23.0		
16	1.564	560	650	1.16	8.5	14.0	21.0		
16	1.571	555	645	1.16	9.0	14.5	21.5		
16	1.566	545	635	1.17	9.5	16.5	22.5		
16	1.576	560	645	1.15	9.0	15.5	22.0		
16	1.572	560	635	1.13	10.0	16.0	22.5		
16	1.578	550	640	1.16	9.0	14.5	21.5		
16	1.575	555	640	1.15	9.5	15.0	22.0		
16	1.580	560	650	1.16	10.0	16.5	22.5		
16	1.576	560	645	1.15	8.5	14.0	21.0		
16	1.579	550	640	1.16	9.0	15.0	21.5		
16	1.574	555	640	1.15	9.5	15.5	22.0		
16	1.580	545	625	1.15	10.0	16.0	22.5		
16	1.576	550	635	1.15	9.5	15.5	22.0		
16	1.584	545	630	1.16	10.5	17.0	23.0		
16	1.579	540	625	1.16	10.0	16.5	22.5		
16	1.575	555	640	1.15	9.5	14.5	21.5		
16	1.574	560	645	1.15	9.5	15.0	22.0		
16	1.583	560	665	1.19	10.0	16.0	22.5		
16	1.580	560	670	1.20	8.5	14.0	21.0		
16	1.577	545	640	1.17	10.5	17.0	23.0		
16	1.577	555	650	1.17	10.0	16.5	22.5		
16	1.580	545	635	1.17	9.5	15.5	22.5		

16	1.578	550	640	1.16	8.5	14.0	21.0		
16	1.582	555	650	1.17	9.0	15.5	22.0		
16	1.580	550	640	1.16	8.5	14.0	21.0		
16	1.585	555	640	1.15	9.5	16.0	22.5		
16	1.584	555	650	1.17	9.0	14.0	21.0		
16	1.577	560	650	1.16	8.5	14.0	20.5		
16	1.575	560	655	1.17	9.0	14.5	21.0		
16	1.584	550	640	1.16	9.5	15.5	22.0		
16	1.582	550	645	1.17	8.5	14.0	20.0		
16	1.586	560	655	1.17	9.0	14.5	21.0		
16	1.585	560	655	1.17	8.5	14.0	20.0		
16	1.574	545	645	1.18	8.5	14.5	20.5		
16	1.572	550	655	1.19	9.0	15.0	21.0		
16	1.577	560	665	1.19	9.5	15.5	21.5		
16	1.575	560	655	1.17	8.5	14.0	20.5		
16	1.581	530	615	1.16	8.5	14.5	23.0	1.20	0.92
16	1.582	535	620	1.16	8.5	14.5	22.5		
16	1.582	555	640	1.15	9.5	15.5	21.0		
16	1.583	550	645	1.17	10.0	16.0	21.5		
16	1.583	540	625	1.16	8.5	14.5	22.0		
16	1.584	535	615	1.15	8.5	14.5	22.0		
16	1.584	545	625	1.15	8.5	14.5	21.5		
16	1.585	550	635	1.15	9.0	15.0	21.5		
16	1.585	540	620	1.15	8.5	14.5	22.0		
16	1.586	540	630	1.17	9.0	15.0	22.0		
16	1.587	535	615	1.15	8.5	14.5	22.5		
16	1.588	535	620	1.16	8.5	14.5	22.5		
16	1.588	535	615	1.15	8.5	14.5	22.5		
16	1.589	535	620	1.16	8.5	14.5	22.5		
16	1.590	540	625	1.16	8.5	14.5	22.0		
16	1.581	545	625	1.15	8.5	14.5	21.5	1.25	0.85
16	1.582	545	635	1.17	9.0	15.0	21.5		
16	1.583	555	650	1.17	10.0	16.0	21.0		
16	1.584	545	630	1.16	9.0	15.0	21.5		
16	1.585	550	640	1.16	9.5	15.5	21.5		
16	1.586	540	630	1.17	9.0	15.0	22.0		
16	1.587	545	640	1.17	9.5	15.5	21.5		
16	1.588	535	620	1.16	8.5	14.5	22.5		
16	1.589	550	635	1.15	9.0	15.0	21.5		
16	1.584	550	640	1.16	9.5	15.5	21.5		
16	1.584	540	630	1.17	9.0	15.0	22.0		
16	1.586	545	630	1.16	9.0	15.0	21.5		
16	1.582	545	630	1.16	9.0	15.0	21.5		
16	1.587	550	640	1.16	9.5	15.5	21.5		
16	1.588	545	630	1.16	9.0	15.0	21.5		
16	1.583	550	640	1.16	9.5	15.5	21.5		
16	1.588	545	630	1.16	9.0	15.0	21.5		
16	1.582	545	625	1.15	8.5	14.5	21.5	1.20	0.98
16	1.586	540	620	1.15	8.5	14.5	22.0		
16	1.584	540	620	1.15	8.5	14.5	22.0		
16	1.582	540	625	1.16	8.5	14.5	22.0		
16	1.583	540	630	1.17	9.0	15.0	22.0		
16	1.584	540	625	1.16	8.5	14.5	22.0		
16	1.583	545	625	1.15	8.5	14.5	21.5		
16	1.584	545	630	1.16	9.0	15.0	21.5		
16	1.590	550	635	1.15	9.0	15.0	21.5		
16	1.591	545	630	1.16	9.0	15.0	21.5		
16	1.589	540	625	1.16	8.5	14.5	22.0		
16	1.592	545	630	1.16	9.0	15.0	21.5		
16	1.588	550	635	1.15	9.0	15.0	21.5		
16	1.593	550	640	1.16	9.5	15.5	21.5		
16	1.587	540	625	1.16	8.5	14.5	22.0		
16	1.592	535	620	1.16	8.5	14.5	22.5	1.15	1.05
16	1.584	540	625	1.16	8.5	14.5	22.0		
16	1.591	540	630	1.17	9.0	15.0	22.0		
16	1.582	540	625	1.16	8.5	14.5	22.0		
16	1.591	540	630	1.17	9.0	15.0	22.0		
16	1.583	540	625	1.16	8.5	14.5	22.0		
16	1.589	540	620	1.15	8.5	14.5	22.0		
16	1.585	540	620	1.15	8.5	14.5	22.0		
16	1.583	545	625	1.15	8.5	14.5	21.5		
16	1.531	560	635	1.13	8.0	14.0	21.0		
16	1.538	560	650	1.16	9.5	15.0	20.0		
16	1.558	550	650	1.18	8.0	16.0	21.0		
16	1.560	560	650	1.16	10.0	16.5	20.5		
16	1.570	560	645	1.15	8.0	14.0	23.0		

16	1.570	555	640	1.15	9.5	15.0	21.0	1.10	0.95
16	1.572	550	650	1.18	8.5	16.5	21.5		
16	1.577	550	645	1.17	8.0	14.5	22.5		
16	1.574	545	640	1.17	9.5	16.5	21.0		
16	1.579	545	635	1.17	8.0	17.0	20.0		
16	1.576	550	635	1.15	9.5	17.0	21.0		
16	1.580	545	630	1.16	8.0	16.0	20.5		
16	1.574	540	625	1.16	9.5	15.5	21.0		
16	1.576	540	635	1.18	8.0	14.5	20.5		
16	1.578	545	630	1.16	8.5	16.5	20.5		
16	1.579	545	635	1.17	8.0	14.0	21.0		
16	1.579	550	635	1.15	9.0	15.0	20.5		
16	1.576	555	650	1.17	10.0	16.0	20.5		
16	1.580	555	625	1.13	8.0	15.0	21.0		
16	1.584	550	635	1.15	9.0	16.5	20.0		
16	1.562	530	610	1.15	8.0	17.0	20.5		
16	1.558	535	630	1.18	9.0	15.5	21.5		
16	1.566	540	615	1.14	8.0	16.5	20.0		
16	1.560	555	645	1.16	9.5	15.0	21.0		
16	1.568	545	635	1.17	8.0	15.5	20.5		
16	1.566	550	635	1.15	9.5	16.5	20.5		
16	1.569	550	635	1.15	8.0	17.0	22.5		
16	1.567	560	630	1.13	10.0	17.0	21.0		
16	1.572	555	650	1.17	8.0	15.5	21.0		
16	1.566	560	650	1.16	9.0	16.5	20.5		
16	1.573	560	650	1.16	9.5	15.0	21.0		
16	1.564	540	635	1.18	8.5	14.5	20.5		
16	1.579	540	625	1.16	8.0	14.5	20.0		
16	1.568	545	640	1.17	9.0	15.0	21.0		
16	1.575	540	630	1.17	10.0	14.5	22.0		
16	1.582	560	645	1.15	8.0	16.0	21.0		
16	1.575	555	645	1.16	9.5	16.0	21.0		
16	1.583	560	655	1.17	8.0	17.0	22.0		
16	1.577	545	630	1.16	9.0	15.5	22.5		
16	1.586	560	645	1.15	10.0	14.5	22.5		
16	1.573	535	620	1.16	8.0	16.0	21.0		
16	1.584	545	640	1.17	8.0	15.0	20.0		
16	1.577	560	650	1.16	10.0	15.0	20.5		
16	1.584	555	645	1.16	8.0	16.5	20.5		
16	1.579	555	655	1.18	9.5	15.0	22.0		
16	1.588	550	645	1.17	8.0	17.0	21.0		
16	1.585	560	635	1.13	9.5	15.5	20.0		
16	1.588	550	630	1.15	10.0	15.0	22.0		
16	1.586	540	625	1.16	8.0	14.5	21.0		
16	1.588	545	620	1.14	9.5	14.5	20.5		
16	1.584	560	630	1.13	8.0	16.0	22.0		
16	1.576	555	640	1.15	9.5	15.0	23.0		
16	1.588	550	645	1.17	8.5	14.5	21.5		
16	1.579	545	640	1.17	9.0	16.0	22.0		
16	1.588	545	635	1.17	10.0	16.5	22.5		
16	1.581	555	640	1.15	9.5	15.5	22.0		
16	1.598	555	650	1.17	8.5	14.0	21.0		
16	1.590	550	645	1.17	9.5	15.0	22.0		
16	1.576	540	615	1.14	9.0	14.5	21.5		
16	1.574	550	625	1.14	9.5	15.5	22.0		
16	1.579	540	620	1.15	9.0	14.5	21.5		
16	1.575	530	605	1.14	8.5	13.5	20.5		
16	1.583	555	640	1.15	9.5	15.0	22.0		
16	1.580	560	650	1.16	8.5	14.0	21.0		
16	1.581	555	640	1.15	9.0	14.5	21.5		
16	1.589	560	650	1.16	9.5	15.0	22.0		
16	1.576	540	620	1.15	10.0	16.0	22.5		
16	1.582	560	645	1.15	9.0	14.5	21.5		
16	1.578	550	640	1.16	9.0	15.0	21.5		
16	1.583	555	640	1.15	9.5	15.5	22.0		
16	1.585	545	625	1.15	10.0	16.0	22.5		
16	1.589	550	635	1.15	9.5	15.5	22.0		
16	1.584	545	630	1.16	10.5	16.5	23.0		
16	1.585	540	625	1.16	10.0	16.5	22.5		
16	1.586	555	640	1.15	9.0	14.5	21.5		
16	1.589	560	645	1.15	9.5	15.0	22.0		
16	1.587	540	625	1.16	8.5	14.0	21.0		
16	1.592	540	620	1.15	8.0	14.0	20.5		
16	1.573	545	635	1.17	9.5	15.0	22.0		
16	1.570	555	630	1.14	8.5	14.0	21.0		
16	1.575	530	620	1.17	10.0	16.5	22.5		

16	1.577	540	630	1.17	8.5	14.0	21.0	1.30	0.95
16	1.578	525	610	1.16	8.0	13.5	20.0		
16	1.581	525	605	1.15	8.0	14.0	20.0		
16	1.579	555	645	1.16	10.0	16.0	22.5		
16	1.584	555	645	1.16	9.5	15.5	22.5		
16	1.580	535	625	1.17	9.0	14.5	21.5		
16	1.583	540	625	1.16	8.5	13.5	20.5		
16	1.581	545	635	1.17	10.5	17.0	23.0		
16	1.584	540	625	1.16	8.5	14.0	21.0		
16	1.582	540	630	1.17	8.5	14.0	21.0		
16	1.586	540	625	1.16	8.0	13.5	20.5		
16	1.585	545	635	1.17	10.0	16.0	22.5		
16	1.589	555	640	1.15	9.5	15.5	22.0		
16	1.588	535	630	1.18	9.5	15.0	22.0		
16	1.593	545	630	1.16	8.5	14.0	21.0		
16	1.590	540	620	1.15	9.5	15.5	22.0		
16	1.595	540	620	1.15	8.5	13.5	20.5		
16	1.577	535	620	1.16	9.0	14.5	21.5		
16	1.578	525	610	1.16	8.5	13.5	20.0		
16	1.579	525	620	1.18	8.5	13.5	20.5		
16	1.582	540	625	1.16	8.5	14.0	20.5		
16	1.581	535	630	1.18	9.0	14.0	21.0		
16	1.584	535	625	1.17	8.5	14.0	21.0		
16	1.582	535	625	1.17	9.5	15.0	22.0		
16	1.585	530	625	1.18	8.5	13.5	20.5		
16	1.572	555	635	1.14	9.0	14.5	21.5		
16	1.575	560	645	1.15	8.5	13.5	20.5		
16	1.573	550	655	1.19	10.0	16.0	22.5		
16	1.576	540	640	1.19	10.5	17.0	23.0		
16	1.573	550	645	1.17	10.0	16.5	22.5		
16	1.578	555	635	1.14	9.5	15.5	22.0		
16	1.576	560	645	1.15	8.5	14.0	20.5		
16	1.580	550	630	1.15	8.5	14.5	21.0		
16	1.605	560	635	1.13	9.5	15.0	22.0		
16	1.602	555	640	1.15	8.5	14.0	21.0		
16	1.581	560	645	1.15	9.0	14.5	21.5		
16	1.584	550	635	1.15	10.0	16.0	22.5		
16	1.586	555	645	1.16	9.0	14.5	21.5		
16	1.589	560	640	1.14	10.0	16.0	22.5		
16	1.588	545	630	1.16	9.5	15.5	22.0		
16	1.590	550	625	1.14	9.5	16.0	22.5		
16	1.591	540	625	1.16	9.0	15.5	22.0		
16	1.594	550	630	1.15	10.0	16.5	22.5		
16	1.588	545	635	1.17	10.5	17.0	23.0		
16	1.585	550	640	1.16	9.5	15.5	22.0		
16	1.584	540	625	1.16	8.5	14.5	22.0		
16	1.585	550	635	1.15	9.0	15.0	21.5		
16	1.585	545	635	1.17	9.0	15.0	21.5		
16	1.586	545	640	1.17	9.5	15.5	21.5		
16	1.584	550	645	1.17	10.0	16.0	21.5		
16	1.587	545	640	1.17	9.5	15.5	21.5		
16	1.585	560	640	1.14	9.5	15.5	21.0		
16	1.586	550	640	1.16	9.5	15.5	21.5		
16	1.588	560	645	1.15	10.0	16.0	21.0		
16	1.590	550	645	1.17	10.0	16.0	21.5		
16	1.589	550	640	1.16	9.5	15.5	21.5		
16	1.592	545	645	1.18	10.0	16.0	21.5		
16	1.587	560	645	1.15	10.0	16.0	21.0		
16	1.592	550	640	1.16	9.5	15.5	21.5		
16	1.588	550	640	1.16	9.5	15.5	21.5		
16	1.593	555	640	1.15	9.5	15.5	21.0		
16	1.592	555	640	1.15	9.5	15.5	21.0		
16	1.595	560	640	1.14	9.5	15.5	21.0		
16	1.595	555	655	1.18	10.0	16.0	21.0		
16	1.596	555	650	1.17	10.0	16.0	21.0		
16	1.592	555	650	1.17	10.0	16.0	21.0		
16	1.593	555	650	1.17	10.0	16.0	21.5		
16	1.594	550	645	1.17	10.0	16.0	21.5		
16	1.589	560	645	1.15	10.0	16.0	21.0		
16	1.588	555	650	1.17	10.0	16.0	21.0		
16	1.593	550	645	1.17	10.0	16.0	21.5		
16	1.589	535	625	1.17	8.5	14.5	22.5		
16	1.592	530	620	1.17	8.5	14.5	23.0		
16	1.588	545	635	1.17	9.0	15.0	21.5		
16	1.589	540	630	1.17	9.0	15.0	22.0		
16	1.595	545	630	1.16	9.0	15.0	21.5		


16	1.592	545	635	1.17	9.0	15.0	21.5	1.25	1.02
16	1.587	535	625	1.17	8.5	14.5	22.5		
16	1.590	540	630	1.17	9.0	15.0	22.0		
16	1.595	545	630	1.16	9.0	15.0	21.5		
16	1.592	550	635	1.15	9.0	15.0	21.5		
16	1.582	550	635	1.15	9.0	15.0	21.5		
16	1.580	545	630	1.16	9.0	15.0	21.5		
16	1.583	550	640	1.16	9.5	15.5	21.5		
16	1.584	550	640	1.16	9.5	15.5	21.5		
16	1.586	550	640	1.16	9.5	15.5	21.5		
16	1.587	545	630	1.16	9.0	15.0	21.5		
16	1.588	550	635	1.15	9.0	15.0	21.5		
16	1.584	550	635	1.15	9.0	15.0	21.5		
16	1.586	550	630	1.15	9.0	15.0	21.5		
16	1.582	545	630	1.16	9.0	15.0	22.0		
16	1.583	545	635	1.17	9.0	15.0	22.0		
16	1.584	550	640	1.16	9.5	15.5	21.5		
16	1.586	545	635	1.17	9.0	15.0	22.0		
16	1.585	550	640	1.16	9.5	15.5	21.5		
16	1.587	545	635	1.17	9.0	15.0	22.0		
16	1.584	550	640	1.16	9.5	15.5	21.5		
16	1.586	545	635	1.17	9.0	15.0	22.0		
16	1.587	550	640	1.16	9.5	15.5	21.5		
16	1.588	545	635	1.17	9.0	15.0	22.0		
16	1.589	545	630	1.16	9.0	15.0	22.0		
16	1.590	545	630	1.16	9.0	15.0	22.0		
16	1.588	545	625	1.15	8.5	14.5	22.0		
16	1.587	545	630	1.16	9.0	15.0	22.0		
16	1.584	545	630	1.16	9.0	15.0	22.0		
16	1.586	545	630	1.16	9.0	15.0	22.0		
16	1.584	540	625	1.16	8.5	14.5	22.5		
16	1.580	555	645	1.16	10.0	16.0	21.0		
16	1.587	550	635	1.15	9.0	15.0	21.5		
16	1.565	550	640	1.16	9.5	15.5	21.5		
16	1.564	550	635	1.15	9.0	15.0	21.5		
16	1.572	540	630	1.17	9.0	15.0	22.0		
16	1.578	535	620	1.16	8.5	14.5	22.5		
16	1.565	545	635	1.17	9.0	15.0	22.0		
16	1.566	540	630	1.17	9.0	15.0	22.0		
16	1.565	550	640	1.16	9.5	15.5	21.5		
16	1.564	535	620	1.16	8.5	14.5	22.5		
16	1.567	540	625	1.16	8.5	14.5	22.5		
16	1.571	540	620	1.15	8.5	14.5	22.0		
16	1.575	535	620	1.16	8.5	14.5	22.5		
16	1.573	535	620	1.16	8.5	14.5	22.5		
16	1.581	545	635	1.17	9.0	15.0	22.0		
16	1.579	540	630	1.17	9.0	15.0	22.0		
16	1.586	540	620	1.15	9.0	14.0	20.0		
16	1.583	550	630	1.15	9.0	15.0	20.0		
16	1.586	555	635	1.14	8.5	15.0	22.5		
16	1.584	555	635	1.14	8.5	14.5	20.0		
16	1.587	525	625	1.19	9.0	14.0	21.0		
16	1.584	535	615	1.15	8.0	15.0	20.5		
16	1.588	555	635	1.14	10.0	16.5	21.0		
16	1.584	530	625	1.18	8.0	15.0	21.5		
16	1.589	545	625	1.15	9.5	14.0	20.0		
16	1.588	560	625	1.12	8.5	15.0	21.0		
16	1.590	525	625	1.19	8.0	15.5	20.0		
16	1.588	540	630	1.17	9.0	14.0	22.5		
16	1.594	535	635	1.19	10.0	14.0	20.0		
16	1.588	540	625	1.16	10.0	16.0	20.5		
16	1.594	550	625	1.14	8.0	15.0	21.0		
16	1.588	555	625	1.13	9.5	14.0	20.0		
16	1.570	555	660	1.19	8.0	15.5	21.0		
16	1.590	540	640	1.19	9.5	15.5	21.0		
16	1.574	550	650	1.18	8.5	15.5	20.5		
16	1.592	560	665	1.19	8.0	15.0	21.0		
16	1.575	545	640	1.17	9.0	16.5	20.5		
16	1.593	550	640	1.16	8.5	14.0	21.0		
16	1.577	550	655	1.19	9.0	15.5	20.5		
16	1.594	560	625	1.12	10.0	14.5	20.0		
16	1.579	560	635	1.13	10.0	16.0	20.5		
16	1.594	550	640	1.16	8.0	15.0	21.0		
16	1.583	545	650	1.19	9.5	14.0	20.0		
16	1.596	545	645	1.18	8.0	15.5	20.0		
16	1.588	545	640	1.17	9.5	14.0	21.0		



16	1.594	545	640	1.17	8.0	15.0	20.5	1.35	1.02
16	1.588	535	630	1.18	10.0	16.0	20.5		
16	1.596	540	635	1.18	8.0	16.5	21.0		
16	1.580	550	645	1.17	9.5	17.0	22.0		
16	1.590	540	640	1.19	8.0	14.0	21.0		
16	1.570	555	635	1.14	10.5	15.0	20.5		
16	1.577	545	630	1.16	8.0	15.5	22.5		
16	1.572	555	625	1.13	9.0	14.0	21.0		
16	1.577	545	625	1.15	8.5	15.5	22.5		
16	1.573	540	640	1.19	10.5	14.0	20.0		
16	1.579	540	640	1.19	8.0	16.5	20.0		
16	1.577	555	660	1.19	9.5	14.0	20.0		
16	1.580	545	635	1.17	8.0	15.0	22.5		
16	1.578	545	645	1.18	9.5	14.0	21.0		
16	1.582	550	650	1.18	8.0	16.5	20.0		
16	1.578	560	650	1.16	10.0	15.5	21.0		
16	1.584	540	625	1.16	8.0	14.0	20.5		
16	1.579	555	625	1.13	9.5	15.0	22.5		
16	1.583	560	650	1.16	8.0	14.5	20.0		
16	1.578	545	645	1.18	9.5	16.5	20.0		
16	1.584	555	640	1.15	8.0	14.0	22.5		
16	1.580	535	635	1.19	9.0	15.0	21.0		
16	1.584	540	635	1.18	10.0	15.0	20.0		
16	1.580	540	620	1.15	8.0	14.0	20.5		
16	1.585	550	630	1.15	9.5	16.5	21.0		
16	1.582	560	655	1.17	8.0	15.0	20.0		
16	1.586	560	650	1.16	10.0	16.0	21.0		
16	1.582	540	635	1.18	8.0	15.5	22.0		
16	1.587	545	640	1.17	9.5	17.0	21.5		
16	1.585	540	640	1.19	8.0	17.0	21.5		
16	1.588	540	640	1.19	9.0	16.5	20.5		
16	1.574	545	645	1.18	10.0	15.5	21.0		
16	1.580	550	645	1.17	8.0	15.0	20.5		
16	1.572	540	630	1.17	9.5	16.0	21.0		
16	1.584	545	635	1.17	8.0	15.5	21.5		
16	1.576	550	650	1.18	10.0	16.0	20.5		
16	1.583	560	645	1.15	10.5	17.0	20.0		
16	1.577	540	630	1.17	8.0	14.5	20.0		
16	1.588	550	650	1.18	9.0	14.5	21.5		
16	1.579	545	635	1.17	8.5	15.0	22.0		
16	1.586	560	640	1.14	9.0	16.0	21.5		
16	1.580	540	630	1.17	10.5	16.5	22.0		
16	1.584	545	625	1.15	8.0	15.0	20.0		
16	1.579	550	615	1.12	10.5	15.0	21.5		
16	1.584	560	635	1.13	9.0	14.5	22.0		
16	1.602	555	670	1.21	10.0	16.0	22.5		
16	1.603	560	675	1.21	9.5	15.0	22.0		
16	1.577	530	630	1.19	9.0	14.5	21.5		
16	1.572	550	655	1.19	8.5	14.0	21.0		
16	1.580	545	650	1.19	9.5	14.5	22.0		
16	1.576	560	665	1.19	8.5	14.0	21.0		
16	1.583	555	655	1.18	9.0	14.5	21.5		
16	1.579	560	665	1.19	8.5	14.0	21.0		
16	1.588	555	670	1.21	9.0	15.0	21.5		
16	1.585	565	665	1.18	8.5	14.0	20.5		
16	1.593	535	635	1.19	10.0	16.5	22.5		
16	1.589	540	645	1.19	11.0	17.0	23.0		
16	1.588	540	645	1.19	11.5	17.0	23.0		
16	1.583	545	655	1.20	8.5	14.0	21.0		
16	1.591	535	635	1.19	9.0	15.0	22.0		
16	1.587	545	655	1.20	9.0	15.0	21.5		
16	1.579	550	660	1.20	8.5	14.0	21.0		
16	1.574	550	660	1.20	9.0	15.0	21.5		
16	1.585	555	660	1.19	8.5	14.0	20.5		
16	1.580	560	665	1.19	8.5	14.5	21.0		
16	1.591	550	655	1.19	9.5	15.5	22.0		
16	1.592	560	655	1.17	9.0	14.5	21.5		
16	1.582	545	645	1.18	10.0	16.0	22.5		
16	1.583	555	655	1.18	9.5	15.0	22.0		
16	1.584	540	625	1.16	10.5	16.0	22.5		
16	1.586	535	615	1.15	9.5	15.5	22.0		
16	1.585	545	640	1.17	8.5	14.0	21.0		
16	1.587	550	655	1.19	11.5	16.5	22.5		
16	1.580	545	640	1.17	10.0	16.0	22.5		
16	1.578	535	630	1.18	10.0	16.5	22.5		
16	1.581	540	635	1.18	9.5	15.5	22.0		

16	1.584	545	645	1.18	9.0	15.0	22.0	1.20	1.05
16	1.582	540	650	1.20	9.5	15.0	22.0		
16	1.585	540	645	1.19	9.0	14.5	21.5		
16	1.583	545	645	1.18	10.0	16.0	22.5		
16	1.586	530	635	1.20	9.5	15.5	22.0		
16	1.586	550	640	1.16	10.0	16.5	22.5		
16	1.587	535	630	1.18	10.5	16.0	22.5		
16	1.588	540	625	1.16	9.0	14.5	21.5		
16	1.590	550	635	1.15	9.5	15.5	22.0		
16	1.590	545	635	1.17	9.0	14.5	21.5		
16	1.593	550	650	1.18	9.0	14.5	21.5		
16	1.592	555	650	1.17	9.5	15.0	22.0		
16	1.595	545	635	1.17	9.0	15.0	21.5		
16	1.576	555	640	1.15	8.5	14.5	21.5		
16	1.578	550	640	1.16	9.0	15.0	21.5		
16	1.579	550	640	1.16	11.0	16.5	22.5		
16	1.581	540	630	1.17	10.0	16.0	22.5		
16	1.580	550	640	1.16	9.0	14.5	21.5		
16	1.583	550	640	1.16	9.0	14.5	21.5		
16	1.582	540	630	1.17	11.5	16.5	22.5		
16	1.586	535	635	1.19	10.0	15.5	22.5		
16	1.583	530	615	1.16	8.5	14.0	21.0		
16	1.587	530	610	1.15	10.0	16.0	22.5		
16	1.585	540	620	1.15	8.5	14.0	20.5		
16	1.590	535	620	1.16	10.0	15.5	22.5		
16	1.587	535	625	1.17	10.0	16.0	22.5		
16	1.591	545	630	1.16	9.5	14.5	22.0		
16	1.578	535	620	1.16	9.5	15.0	22.0		
16	1.572	535	625	1.17	11.0	16.5	22.5		
16	1.580	540	660	1.22	10.0	16.0	22.5		
16	1.575	540	635	1.18	9.5	16.5	22.5		
16	1.582	555	645	1.16	9.0	14.5	21.5		
16	1.580	540	645	1.19	8.5	15.0	22.0		
16	1.582	545	655	1.20	10.0	17.0	23.0		
16	1.584	550	660	1.20	9.5	15.5	22.0		
16	1.583	550	655	1.19	9.0	14.5	21.5		
16	1.586	545	655	1.20	10.5	16.5	23.0		
16	1.585	550	655	1.19	9.0	14.5	21.5		
16	1.590	560	655	1.17	8.5	14.0	20.5		
16	1.587	545	635	1.17	9.0	15.0	21.5		
16	1.590	535	630	1.18	10.5	16.5	22.5		
16	1.590	540	625	1.16	11.0	17.0	22.5		
16	1.593	540	640	1.19	10.0	15.5	22.0		
16	1.576	560	655	1.17	9.0	14.5	21.5		
16	1.578	550	645	1.17	9.5	15.0	21.5		
16	1.577	550	645	1.17	9.0	15.0	21.5		
16	1.580	550	650	1.18	9.5	15.0	21.5		
16	1.575	550	640	1.16	10.5	16.5	22.5		
16	1.575	550	640	1.16	8.5	14.5	21.0		
16	1.574	555	660	1.19	9.0	14.5	21.5		
16	1.576	540	635	1.18	10.0	16.0	22.5		
16	1.575	540	635	1.18	9.5	15.5	22.0		
16	1.578	550	655	1.19	9.0	15.0	21.5		
16	1.577	550	640	1.16	11.0	17.0	23.0		
16	1.580	555	645	1.16	10.5	16.5	22.5		
16	1.579	555	640	1.15	9.0	15.0	21.5		
16	1.581	555	650	1.17	9.5	16.0	22.0		
16	1.582	555	640	1.15	9.0	15.0	21.0		
16	1.583	555	645	1.16	9.5	15.5	21.5		
16	1.569	550	640	1.16	9.0	15.0	21.0		
16	1.572	550	645	1.17	9.0	15.0	21.0		
16	1.575	545	635	1.17	8.5	13.0	20.5		
16	1.568	555	650	1.17	8.0	13.5	20.5		
16	1.576	560	650	1.16	8.5	13.5	20.0		
16	1.568	550	640	1.16	8.0	13.5	20.5		
16	1.577	560	655	1.17	9.0	14.0	21.0		
16	1.571	555	650	1.17	9.0	14.0	21.0		
16	1.575	555	640	1.15	9.0	14.0	21.0		
16	1.570	560	650	1.16	8.5	13.0	20.5		
16	1.579	560	650	1.16	9.0	14.5	21.5		
16	1.576	555	650	1.17	8.5	14.0	21.0		
16	1.565	555	650	1.17	9.5	15.0	22.0		
16	1.571	550	635	1.15	9.0	15.0	22.0		
16	1.568	555	650	1.17	8.5	14.0	21.0		
16	1.574	560	650	1.16	8.0	13.5	20.5		
16	1.570	550	640	1.16	8.0	13.0	20.5		
16	1.570	550	640	1.16	8.0	13.0	20.5		

16	1.572	555	640	1.15	8.5	14.0	21.0		
16	1.568	545	635	1.17	9.0	14.5	22.0		
16	1.574	550	640	1.16	8.0	13.0	20.5		
16	1.570	550	640	1.16	8.5	14.0	21.0		
16	1.574	560	660	1.18	8.0	14.0	21.0		
16	1.569	545	640	1.17	8.0	13.0	20.5		
16	1.565	555	650	1.17	8.5	14.0	21.0		
16	1.572	550	640	1.16	8.0	13.0	20.0		
16	1.568	560	645	1.15	8.5	14.0	21.5		
16	1.577	550	640	1.16	8.0	14.0	21.0		
16	1.572	550	640	1.16	8.0	14.5	21.5		
16	1.581	545	635	1.17	8.0	14.0	21.0		
16	1.575	545	635	1.17	8.5	14.0	21.0		
16	1.569	550	640	1.16	8.0	14.0	21.0	1.20	1.02
16	1.565	550	640	1.16	9.0	14.0	21.0		
16	1.573	545	630	1.16	8.5	13.5	20.5		
16	1.579	545	635	1.17	8.5	14.0	21.0		
16	1.569	550	640	1.16	8.0	13.5	21.0		
16	1.571	550	635	1.15	8.5	14.0	21.0		
16	1.568	550	640	1.16	8.5	14.0	21.5		
16	1.565	550	640	1.16	9.0	15.0	22.0		
16	1.575	550	645	1.17	8.5	14.0	21.0		
16	1.569	560	655	1.17	9.0	15.0	22.0		
16	1.575	550	645	1.17	8.5	14.0	21.5		
16	1.568	555	650	1.17	9.0	14.5	21.5		
16	1.579	535	625	1.17	8.0	13.5	20.5		
16	1.575	550	640	1.16	8.0	13.5	21.0		
16	1.565	540	630	1.17	8.5	14.0	21.0		
16	1.571	540	625	1.16	8.0	13.0	20.5	1.25	1.09
16	1.568	545	630	1.16	8.5	14.0	21.0		
16	1.572	545	630	1.16	8.5	14.0	21.0		
16	1.566	535	630	1.18	8.0	13.0	20.0		
16	1.573	550	645	1.17	8.5	14.0	21.0		
16	1.559	545	630	1.16	8.5	14.0	21.0		
16	1.568	550	635	1.15	9.0	14.5	21.5		
16	1.564	560	655	1.17	8.0	13.5	20.5		
16	1.568	555	650	1.17	9.5	15.0	22.0		
16	1.570	550	645	1.17	9.0	14.5	21.5		
16	1.576	555	650	1.17	8.5	14.0	21.0		
16	1.579	555	650	1.17	8.0	14.0	21.0		
16	1.584	560	655	1.17	9.0	15.0	22.0		
16	1.581	555	650	1.17	9.0	14.5	21.5		
16	1.588	555	650	1.17	8.5	14.0	21.0		
16	1.579	550	625	1.14	10.0	14.0	21.0		
16	1.593	555	640	1.15	9.0	15.0	21.0		
16	1.580	550	640	1.16	8.5	16.5	20.0	1.30	1.02
16	1.593	555	650	1.17	8.0	14.0	20.5		
16	1.580	555	640	1.15	9.0	15.0	22.5		
16	1.594	560	645	1.15	8.5	16.0	21.0		
16	1.582	545	640	1.17	8.0	14.5	20.0		
16	1.595	545	620	1.14	10.0	15.5	21.0		
16	1.570	550	640	1.16	10.5	15.0	21.0		
16	1.572	550	640	1.16	8.5	14.0	20.5		
16	1.570	545	630	1.16	9.5	16.0	20.5		
16	1.573	555	635	1.14	8.0	14.0	20.5		
16	1.572	540	620	1.15	9.0	14.5	22.5		
16	1.579	550	625	1.14	8.0	17.0	21.0		
16	1.577	560	640	1.14	8.0	17.0	20.0		
16	1.580	530	620	1.17	10.0	15.0	23.0		
16	1.574	545	635	1.17	8.0	16.5	19.5		
16	1.582	555	645	1.16	9.5	15.5	21.0		
16	1.573	550	630	1.15	8.0	14.0	20.5	1.25	1.05
16	1.584	555	645	1.16	10.0	15.5	20.5		
16	1.580	540	630	1.17	8.0	14.0	22.5		
16	1.583	550	635	1.15	9.5	16.5	22.5		
16	1.582	540	625	1.16	8.0	14.0	20.0		
16	1.583	540	630	1.17	10.0	15.0	22.5		
16	1.582	560	635	1.13	10.5	16.0	20.0		
16	1.584	545	640	1.17	8.0	14.0	20.0		
16	1.585	555	650	1.17	9.5	15.0	21.0		
16	1.590	540	625	1.16	8.0	14.0	21.0		
16	1.584	550	625	1.14	10.0	15.0	21.5		
16	1.592	555	625	1.13	8.0	14.0	20.5		
16	1.583	550	635	1.15	10.0	15.0	20.5		
16	1.582	555	635	1.14	8.0	16.5	22.5		
16	1.588	540	620	1.15	9.0	14.0	21.0		

16	1.583	545	635	1.17	9.5	15.0	20.0	1.30	0.98
16	1.589	555	635	1.14	8.5	14.0	20.5		
16	1.585	560	645	1.15	8.0	15.0	21.5		
16	1.590	550	640	1.16	9.0	14.0	21.5		
16	1.586	540	620	1.15	8.5	14.5	20.5		
16	1.590	545	630	1.16	9.5	16.5	20.0		
16	1.588	555	635	1.14	8.0	15.5	23.0		
16	1.592	545	635	1.17	10.0	15.0	22.5		
16	1.587	550	630	1.15	10.0	14.0	22.0		
16	1.588	560	640	1.14	10.5	15.0	20.5	1.25	0.95
16	1.583	555	645	1.16	8.0	14.0	21.0		
16	1.588	540	630	1.17	9.0	16.5	20.5		
16	1.584	540	625	1.16	10.0	17.0	21.0		
16	1.589	550	640	1.16	8.0	14.0	20.0		
16	1.586	555	640	1.15	9.5	15.5	20.0		
16	1.590	550	645	1.17	8.5	14.0	21.0		
16	1.586	560	650	1.16	9.0	15.5	21.0		
16	1.574	540	630	1.17	8.0	14.0	20.5		
16	1.570	550	635	1.15	10.5	16.5	21.0		
16	1.576	545	635	1.17	10.0	14.0	22.5		
16	1.571	545	635	1.17	8.0	15.0	21.0		
16	1.577	545	630	1.16	9.5	14.0	21.0		
16	1.572	540	630	1.17	8.0	15.5	20.5		
16	1.579	525	615	1.17	9.5	14.0	20.0		
16	1.572	535	620	1.16	10.0	16.5	22.5		
16	1.580	545	640	1.17	8.0	14.0	20.0	1.20	0.95
16	1.573	560	645	1.15	9.5	15.0	21.0		
16	1.582	545	620	1.14	8.0	14.0	20.5		
16	1.576	540	620	1.15	9.0	15.0	22.5		
16	1.580	545	635	1.17	10.0	14.0	20.5		
16	1.579	545	630	1.16	8.0	16.5	21.0		
16	1.588	540	635	1.18	9.5	14.0	20.0		
16	1.580	555	635	1.14	8.0	15.0	20.0		
16	1.584	550	645	1.17	9.5	14.0	21.0		
16	1.576	555	650	1.17	8.0	15.5	20.0		
16	1.586	540	620	1.15	9.5	14.0	20.5		
16	1.577	550	640	1.16	10.0	15.5	21.0		
16	1.570	550	635	1.15	10.0	14.0	22.5		
16	1.566	555	640	1.15	8.0	15.0	22.0		
16	1.572	550	640	1.16	9.5	14.0	21.0		
16	1.568	550	645	1.17	8.0	16.5	22.5		
16	1.580	550	625	1.14	9.5	15.0	22.0	1.30	0.96
16	1.571	545	625	1.15	8.0	14.0	21.5		
16	1.584	560	630	1.13	10.0	15.5	20.5		
16	1.585	545	625	1.15	8.0	16.0	22.0		
16	1.585	530	625	1.18	9.5	14.5	21.0		
16	1.586	555	640	1.15	8.0	16.0	21.5		
16	1.588	560	650	1.16	10.0	15.0	22.0		
16	1.583	550	640	1.16	9.0	14.0	20.5	1.25	1.05
16	1.584	535	625	1.17	8.5	14.0	22.5		
16	1.586	545	635	1.17	9.0	14.5	21.5		
16	1.587	540	630	1.17	9.0	14.5	22.0		
16	1.590	535	620	1.16	8.5	14.0	22.5		
16	1.584	540	625	1.16	8.5	14.0	22.0		
16	1.583	560	645	1.15	10.0	15.5	21.0		
 582	550	635	1.15	9.0	14.5	21.5			
580	540	625	1.16	8.5	14.0	22.0			
16	1.584	555	640	1.15	9.5	15.0	21.0		
16	1.582	555	645	1.16	10.0	15.5	21.0		
16	1.583	555	645	1.16	10.0	15.5	21.0		
16	1.586	540	630	1.17	9.0	14.5	22.0		
16	1.587	535	625	1.17	8.5	14.0	22.5		
16	1.580	555	645	1.16	10.0	15.5	21.0		
16	1.583	555	640	1.15	9.5	15.0	21.0		
16	1.582	550	635	1.15	9.0	14.5	21.5		
16	1.584	545	630	1.16	9.0	14.5	22.0	1.20	1.02
16	1.583	550	640	1.16	9.5	15.0	21.5		
16	1.584	545	635	1.17	9.0	14.5	22.0		
16	1.586	550	640	1.16	9.5	15.0	21.5		
16	1.587	540	625	1.16	8.5	14.0	22.5		
16	1.588	560	650	1.16	10.0	15.5	21.0		
16	1.589	550	640	1.16	9.5	15.0	21.5		
16	1.587	545	635	1.17	9.0	14.5	22.0		
16	1.586	535	620	1.16	8.5	14.0	22.5		
16	1.584	535	620	1.16	8.5	14.0	22.5		
16	1.582	535	625	1.17	8.5	14.0	22.5		

16	1.587	535	620	1.16	8.5	14.0	22.5		
16	1.582	540	630	1.17	9.0	14.5	22.5		
16	1.584	540	630	1.17	9.0	14.5	22.0		
16	1.583	550	640	1.16	9.5	15.0	21.5		
16	1.586	540	625	1.16	8.5	14.0	22.0		
16	1.582	540	625	1.16	8.5	14.0	22.0		
16	1.584	555	645	1.16	10.0	15.5	21.0		
16	1.583	540	630	1.17	9.0	14.5	22.0		
16	1.582	555	645	1.16	10.0	15.5	21.0		
16	1.584	540	630	1.17	9.0	14.5	22.0		
16	1.582	545	635	1.17	9.0	14.5	22.0		
16	1.587	550	640	1.16	9.5	15.0	21.5		
16	1.588	550	635	1.15	9.0	14.5	21.5		
16	1.589	545	635	1.17	9.0	14.5	22.0		
16	1.587	540	630	1.17	9.0	14.5	22.0		
16	1.586	540	625	1.16	8.5	14.0	22.0		
16	1.582	545	635	1.17	9.0	14.5	22.0		
16	1.584	540	625	1.16	8.5	14.0	22.0		
16	1.581	555	645	1.16	10.0	15.5	21.0		
16	1.584	540	630	1.17	9.0	14.5	22.0		
16	1.584	545	635	1.17	9.0	14.5	22.0		
16	1.584	535	620	1.16	8.5	14.0	22.5		
16	1.585	545	635	1.17	9.0	14.5	22.0		
16	1.581	545	630	1.16	9.0	14.5	22.0		
16	1.580	550	640	1.16	9.5	15.0	21.5		
16	1.574	540	625	1.16	8.5	14.0	22.0		
16	1.568	540	625	1.16	8.5	14.0	22.0		
16	1.570	535	625	1.17	8.5	14.0	22.5		
16	1.565	540	630	1.17	9.0	14.5	22.0		
16	1.577	540	635	1.18	9.0	14.5	22.0		
16	1.581	545	640	1.17	9.5	15.0	22.0		
16	1.587	535	630	1.18	8.0	13.5	22.5		
16	1.596	545	640	1.17	9.5	15.0	22.0		
16	1.592	550	645	1.17	10.0	15.5	21.5		
16	1.587	550	640	1.16	9.5	15.0	21.5		
16	1.567	545	635	1.17	9.0	15.0	21.5		
16	1.569	535	630	1.18	9.0	15.0	22.5		
16	1.574	545	635	1.17	9.0	15.0	21.5		
16	1.580	550	640	1.16	9.5	15.5	21.5		
16	1.573	555	645	1.16	10.0	16.0	21.0		
16	1.572	545	635	1.17	9.0	15.0	21.5		
16	1.574	540	630	1.17	9.0	15.0	22.0		
16	1.580	540	635	1.18	9.0	15.0	22.0		
16	1.576	535	625	1.17	8.5	14.5	22.0		
16	1.574	540	630	1.17	9.0	15.0	22.0		
16	1.576	545	640	1.17	9.5	15.5	21.5		
16	1.578	540	635	1.18	9.0	15.0	22.0		
16	1.574	550	645	1.17	10.0	16.0	21.5		
16	1.576	545	640	1.17	9.5	15.5	21.5		
16	1.579	545	635	1.17	9.0	15.0	21.5		
16	1.579	550	645	1.17	10.0	16.0	21.5		
16	1.582	550	640	1.16	9.5	15.5	21.5		
16	1.580	545	635	1.17	9.0	15.0	21.5		
16	1.572	550	635	1.15	8.5	13.5	20.5		
16	1.573	545	630	1.16	8.0	13.0	20.0		
16	1.575	550	630	1.15	9.0	14.0	21.0		
16	1.578	535	625	1.17	9.0	14.0	20.5		
16	1.569	555	650	1.17	9.0	14.0	21.0		
16	1.571	550	635	1.15	9.5	14.5	21.0		
16	1.574	560	650	1.16	9.0	14.5	21.5		
16	1.568	560	660	1.18	9.5	15.5	22.0		
16	1.578	550	640	1.16	8.5	14.0	21.0		
16	1.572	555	655	1.18	9.0	15.0	21.5		
16	1.569	550	640	1.16	9.0	14.5	21.0		
16	1.564	550	640	1.16	8.5	14.0	20.5		
16	1.574	560	660	1.18	8.5	14.0	21.0		
16	1.571	555	640	1.15	9.5	15.5	22.0		
16	1.573	550	640	1.16	9.0	15.0	21.5		
16	1.569	555	650	1.17	8.5	14.0	21.0		
16	1.576	555	650	1.17	9.0	14.5	21.5		
16	1.574	550	640	1.16	9.0	15.0	21.5		
16	1.580	550	640	1.16	8.5	14.0	21.0		
16	1.579	555	640	1.15	9.0	15.0	21.5		
16	1.582	545	635	1.17	9.0	14.0	20.5		
16	1.580	555	650	1.17	9.0	14.5	21.0		
16	1.584	540	630	1.17	8.5	13.5	20.5		

16	1.581	560	655	1.17	8.5	14.0	21.0	1.25	1.05
16	1.579	545	640	1.17	8.0	14.0	20.5		
16	1.581	555	655	1.18	8.5	14.0	21.0		
16	1.583	550	635	1.15	8.0	13.5	20.5		
16	1.582	550	635	1.15	8.0	13.5	20.5		
16	1.578	550	640	1.16	8.5	14.0	21.0		
16	1.575	555	645	1.16	8.5	14.0	21.0		
16	1.579	560	655	1.17	9.0	15.0	21.5		
16	1.577	555	655	1.18	9.0	15.0	21.5		
16	1.581	555	645	1.16	9.0	14.5	21.0	1.20	1.03
16	1.579	555	650	1.17	9.5	15.5	22.0		
16	1.583	540	625	1.16	9.0	14.5	21.0		
16	1.585	540	630	1.17	8.5	14.0	21.0		
16	1.574	545	625	1.15	8.0	13.5	20.5		
16	1.577	545	625	1.15	8.0	13.5	20.5		
16	1.575	545	640	1.17	8.5	14.0	21.0		
16	1.573	560	650	1.16	8.0	14.0	20.5		
16	1.578	545	625	1.15	8.0	14.0	20.5		
16	1.571	550	635	1.15	8.5	14.5	21.0		
16	1.581	560	650	1.16	8.5	14.5	21.0		
16	1.578	560	655	1.17	9.0	15.0	21.5		
16	1.576	550	635	1.15	9.0	14.5	21.0		
16	1.574	550	630	1.15	8.5	14.0	21.0		
16	1.582	540	625	1.16	8.0	14.0	21.0		
16	1.579	550	635	1.15	8.5	14.0	21.0		
16	1.586	555	650	1.17	8.0	13.5	20.5	1.30	1.02
16	1.582	550	630	1.15	9.0	15.0	21.5		
16	1.584	555	635	1.14	8.5	14.0	21.0		
16	1.581	555	650	1.17	9.0	14.5	21.0		
16	1.583	545	635	1.17	9.5	15.0	21.5		
16	1.582	560	655	1.17	8.0	14.0	20.5		
16	1.586	540	625	1.16	8.5	14.5	21.0		
16	1.584	550	635	1.15	9.5	15.0	21.5		
16	1.590	535	620	1.16	8.0	13.5	20.5		
16	1.588	550	635	1.15	8.5	14.0	20.5		
16	1.580	550	640	1.16	8.5	14.5	21.0		
16	1.574	560	655	1.17	9.5	15.0	21.5		
16	1.586	550	635	1.15	9.0	15.0	21.5		
16	1.582	540	625	1.16	9.0	14.5	21.0		
16	1.573	545	630	1.16	9.0	14.5	21.0		
16	1.577	550	640	1.16	8.5	14.0	20.5		
16	1.579	550	635	1.15	9.0	14.5	21.0	1.15	1.00
16	1.576	545	630	1.16	9.0	14.5	21.0		
16	1.577	545	630	1.16	8.5	13.5	20.5		
16	1.580	545	635	1.17	8.5	14.0	20.5		
16	1.583	550	635	1.15	9.0	14.0	21.0		
16	1.582	550	640	1.16	9.0	14.5	21.5		
16	1.580	555	655	1.18	8.5	14.0	21.0		
16	1.586	555	640	1.15	8.5	14.0	21.0		
16	1.581	545	635	1.17	9.0	14.0	20.5		
16	1.577	555	645	1.16	9.5	15.0	21.5		
16	1.583	555	635	1.14	9.0	14.5	21.0		
16	1.578	550	635	1.15	8.5	14.0	21.0		
16	1.577	540	625	1.16	9.5	15.0	21.5		
16	1.579	545	630	1.16	8.0	13.5	20.5		
16	1.574	555	650	1.17	8.5	14.0	21.0		
16	1.577	550	630	1.15	8.5	14.0	21.0		
16	1.584	555	660	1.19	8.0	14.0	21.0	1.30	0.80
16	1.588	540	640	1.19	9.5	15.0	20.5		
16	1.575	555	650	1.17	8.0	16.0	21.0		
16	1.580	555	650	1.17	9.5	14.5	21.0		
16	1.576	545	650	1.19	8.0	15.0	20.5		
16	1.580	555	650	1.17	9.5	14.0	21.0		
16	1.576	560	650	1.16	8.0	15.5	20.5		
16	1.582	525	625	1.19	10.0	14.0	21.0		
16	1.586	540	635	1.18	8.0	15.5	20.0		
16	1.582	550	645	1.17	10.0	14.0	21.0		
16	1.586	540	645	1.19	8.0	15.0	22.5		
16	1.582	525	620	1.18	9.5	16.0	21.0		
16	1.587	540	635	1.18	8.0	14.5	21.5		
16	1.583	535	625	1.17	9.5	13.5	20.5		
16	1.588	530	630	1.19	8.0	13.5	20.5		
16	1.580	555	630	1.14	10.0	14.0	20.5		
16	1.588	560	650	1.16	8.0	15.0	21.0		
16	1.582	555	635	1.14	9.5	14.0	20.0		
16	1.590	550	650	1.18	8.0	14.0	22.5		

16	1.583	530	625	1.18	9.5	15.0	21.0	1.25	0.55
16	1.589	535	630	1.18	8.0	15.0	20.5		
16	1.584	535	620	1.16	9.5	14.0	22.5		
16	1.590	530	625	1.18	8.0	14.5	20.5		
16	1.584	530	625	1.18	10.0	13.5	21.0		
16	1.592	530	615	1.16	10.0	14.0	20.5		
16	1.583	540	645	1.19	8.0	15.5	21.0		
16	1.590	550	625	1.14	9.5	14.0	20.5		
16	1.588	540	625	1.16	8.0	15.0	22.5		
16	1.591	540	645	1.19	9.5	16.0	20.5		
16	1.589	530	630	1.19	8.0	14.0	22.0		
16	1.592	560	630	1.13	9.5	15.5	20.5		
16	1.588	560	640	1.14	8.0	14.0	21.0		
16	1.593	560	635	1.13	9.0	15.5	21.0		
16	1.587	540	640	1.19	8.0	14.0	20.0		
16	1.579	545	640	1.17	9.5	13.5	20.0		
16	1.580	560	660	1.18	8.0	14.0	20.5		
16	1.580	550	645	1.17	9.5	15.5	21.0		
16	1.584	550	630	1.15	8.0	14.0	20.5		
16	1.583	530	630	1.19	10.0	15.0	20.5		
16	1.582	545	635	1.17	10.0	14.0	20.5		
16	1.585	540	625	1.16	8.0	16.0	20.0		
16	1.582	540	620	1.15	10.0	14.0	20.0		
16	1.587	545	625	1.15	8.0	13.5	20.5		
16	1.583	545	620	1.14	9.5	14.0	21.5		
16	1.588	555	650	1.17	8.5	15.0	20.5		
16	1.584	540	625	1.16	8.0	14.0	22.5		
16	1.589	550	625	1.14	8.0	15.0	21.0		
16	1.582	540	625	1.16	9.0	14.0	22.5		
16	1.584	540	630	1.17	10.5	15.5	22.0		
16	1.586	560	650	1.16	8.0	14.0	22.5		
16	1.582	545	635	1.17	9.5	15.5	22.5		
16	1.586	540	645	1.19	8.0	14.0	20.0		
16	1.583	540	645	1.19	9.5	13.5	21.0		
16	1.588	550	645	1.17	8.0	14.0	22.5		
16	1.582	555	635	1.14	8.0	15.5	22.0		
16	1.589	540	640	1.19	9.5	14.0	22.0		
16	1.584	560	630	1.13	10.0	15.5	22.0		
16	1.589	540	620	1.15	8.0	14.0	21.5		
16	1.586	550	630	1.15	10.0	13.5	22.5		
16	1.590	540	625	1.16	8.0	14.0	22.0		
16	1.587	540	625	1.16	9.5	15.5	22.5		
16	1.592	540	620	1.15	9.0	14.0	21.5		
16	1.588	555	630	1.14	8.0	15.5	22.0		
16	1.591	550	630	1.15	10.0	14.0	22.0		
16	1.586	550	620	1.13	10.0	13.5	22.5		
16	1.579	535	615	1.15	8.0	14.0	21.0		
16	1.582	535	620	1.16	9.5	15.5	20.5		
16	1.580	535	620	1.16	8.0	14.0	21.0		
16	1.584	560	650	1.16	10.0	15.5	20.5		
16	1.582	540	640	1.19	8.0	14.0	22.5		
16	1.588	545	645	1.18	9.5	13.5	21.0		
16	1.583	545	640	1.17	8.0	14.0	21.0		
16	1.587	550	650	1.18	10.0	14.0	21.0		
16	1.584	530	630	1.19	8.0	15.0	21.5		
16	1.590	560	635	1.13	10.0	16.0	20.5		
16	1.583	540	625	1.16	8.0	14.0	20.0		
16	1.591	550	620	1.13	9.5	15.0	20.5		
16	1.584	535	630	1.18	8.0	15.5	21.0		
16	1.591	560	630	1.13	9.5	14.0	21.5		
16	1.588	540	630	1.17	8.0	16.0	22.0		
16	1.592	545	620	1.14	10.0	14.0	23.0		
16	1.589	540	620	1.15	10.0	15.0	21.0		
16	1.587	545	640	1.17	9.5	15.5	21.5		
16	1.586	550	655	1.19	10.0	16.0	21.5		
16	1.579	540	635	1.18	9.0	15.0	22.0		
16	1.579	540	630	1.17	9.0	15.0	22.0		
16	1.576	545	635	1.17	9.0	15.0	21.5		
16	1.579	550	640	1.16	9.5	15.5	21.5		
16	1.574	545	635	1.17	9.0	15.0	21.5		
16	1.579	545	640	1.17	9.5	15.5	21.5		
16	1.578	550	645	1.17	10.0	16.0	21.5		
16	1.581	540	635	1.18	9.0	15.0	22.0		
16	1.583	540	630	1.17	9.0	15.0	22.0		
16	1.584	540	630	1.17	9.0	15.0	22.0		
16	1.586	540	635	1.18	9.0	15.0	22.0		

16	1.587	535	625	1.17	8.5	14.5	22.5				
16	1.588	545	640	1.17	9.5	15.5	21.5				
16	1.589	545	635	1.17	9.0	15.0	21.5				
16	1.584	550	640	1.16	9.5	15.5	21.5	1.35	1.05		
16	1.586	540	630	1.17	9.0	15.0	22.0				
16	1.582	540	635	1.18	9.0	15.0	22.0				
16	1.587	535	620	1.16	8.5	14.5	22.5				
16	1.584	550	645	1.17	10.0	16.0	21.5				
16	1.586	545	635	1.17	9.0	15.0	21.5				
16	1.587	545	640	1.17	9.5	15.5	21.5				
16	1.587	550	650	1.18	10.0	16.0	21.5				
16	1.590	545	635	1.17	9.0	15.0	21.5				
16	1.591	555	650	1.17	10.0	16.0	21.0				
16	1.594	550	645	1.17	10.0	16.0	21.5				
16	1.593	545	640	1.17	9.5	15.5	21.5				
16	1.594	545	640	1.17	9.5	15.5	21.5				
16	1.592	540	635	1.18	9.0	15.0	22.0				
16	1.597	535	625	1.17	8.5	14.5	22.5				
16	1.596	545	640	1.17	9.5	15.5	21.5				
16	1.590	545	640	1.17	9.5	15.5	21.5			1.25	1.01
16	1.588	550	645	1.17	10.0	16.0	21.5				
16	1.591	550	650	1.18	10.0	16.0	21.5				
16	1.589	550	645	1.17	10.0	16.0	21.5				
16	1.592	545	635	1.17	9.0	15.0	21.5				
16	1.594	545	640	1.17	9.5	15.5	21.5				
16	1.593	545	640	1.17	9.5	15.5	22.0				
16	1.591	540	635	1.18	9.0	15.0	22.0				
16	1.594	545	640	1.17	9.5	15.5	21.5				
16	1.592	545	635	1.17	9.0	15.0	22.0				
16	1.587	540	635	1.18	10.0	16.5	22.5	1.20	1.00		
16	1.589	560	660	1.18	9.0	14.5	21.5				
16	1.578	545	645	1.18	9.5	15.5	22.0				
16	1.581	555	655	1.18	8.5	14.0	21.0				
16	1.580	550	645	1.17	10.5	16.5	23.0				
16	1.583	550	650	1.18	10.0	16.0	22.5				
16	1.583	555	650	1.17	9.0	14.5	21.5				
16	1.579	560	650	1.16	9.0	15.0	21.5				
16	1.581	560	655	1.17	8.5	14.0	20.5				
16	1.578	565	660	1.17	8.0	14.0	20.0				
16	1.583	535	625	1.17	9.5	15.5	22.0				
16	1.580	545	640	1.17	10.5	16.5	22.5				
16	1.586	535	635	1.19	11.0	17.0	23.0				
16	1.583	545	640	1.17	9.5	15.5	22.0				
16	1.589	565	655	1.16	8.5	14.0	21.0			1.40	1.50
16	1.587	560	655	1.17	8.0	14.0	20.5				
16	1.576	565	655	1.16	9.0	14.5	21.5				
16	1.573	560	660	1.18	8.5	14.0	21.0				
16	1.580	540	635	1.18	9.5	16.5	22.5				
16	1.577	545	635	1.17	10.5	17.0	23.0				
16	1.582	555	645	1.16	9.0	14.5	21.5				
16	1.579	545	640	1.17	9.5	15.0	22.0				
16	1.576	555	640	1.15	9.5	15.5	22.0				
16	1.573	560	650	1.16	8.5	14.0	21.0				
16	1.577	530	625	1.18	9.5	15.5	22.0				
16	1.575	540	635	1.18	10.0	15.0	22.0				
16	1.579	555	670	1.21	10.5	16.0	22.5				
16	1.575	560	675	1.21	9.5	15.5	22.0				
16	1.581	530	630	1.19	9.5	15.0	22.0				
16	1.578	550	655	1.19	8.5	14.0	21.0				
16	1.583	545	650	1.19	10.5	16.5	22.5	1.50	1.42		
16	1.580	560	665	1.19	8.5	14.0	21.0				
16	1.582	555	655	1.18	9.0	14.5	21.5				
16	1.580	560	665	1.19	8.5	14.0	21.0				
16	1.584	555	670	1.21	9.5	14.5	21.5				
16	1.582	565	665	1.18	8.5	14.0	20.5				
16	1.585	535	635	1.19	10.5	16.5	22.5				
16	1.583	540	645	1.19	11.0	17.0	23.0				
16	1.586	540	645	1.19	11.5	16.5	23.0				
16	1.583	545	655	1.20	8.5	14.0	21.0				
16	1.588	535	635	1.19	9.5	15.0	22.0				
16	1.585	545	655	1.20	9.0	14.5	21.5				
16	1.589	550	660	1.20	8.5	14.0	21.0				
16	1.586	550	660	1.20	9.0	15.0	21.5				
16	1.590	555	660	1.19	8.5	14.0	20.5				
16	1.587	560	665	1.19	9.0	14.0	21.0				
16	1.592	550	655	1.19	9.5	15.5	22.0				



16	1.588	560	655	1.17	9.0	14.5	21.5	1.35	1.28
16	1.593	545	645	1.18	10.0	16.5	22.5		
16	1.590	555	655	1.18	8.5	14.0	21.0		
16	1.573	535	630	1.18	11.0	16.0	22.5		
16	1.570	540	635	1.18	11.5	17.0	23.0		
16	1.574	555	655	1.18	9.0	14.5	21.5		
16	1.571	550	660	1.20	9.5	15.5	22.0		
16	1.577	555	660	1.19	9.0	15.0	21.5		
16	1.573	540	650	1.20	10.0	16.0	22.5		
16	1.578	540	650	1.20	9.5	15.5	22.0		
16	1.574	550	655	1.19	9.0	14.5	21.5		
16	1.579	545	655	1.20	11.5	17.0	23.0		
16	1.575	540	645	1.19	10.5	16.5	22.5		
16	1.576	535	630	1.18	9.5	14.5	21.5		
16	1.573	550	645	1.17	10.5	16.0	22.5		
16	1.578	535	635	1.19	11.0	17.0	23.0		
16	1.579	540	645	1.19	10.0	15.5	22.0		
16	1.580	540	635	1.18	11.5	17.0	23.0		
16	1.583	545	645	1.18	10.5	16.5	22.5		
16	1.582	535	625	1.17	9.0	14.5	21.5		
16	1.586	545	650	1.19	9.5	15.5	22.0		
16	1.585	540	635	1.18	11.0	16.5	23.0		
16	1.588	530	640	1.21	9.5	15.5	22.0		
16	1.584	540	630	1.17	9.0	15.0	22.0		
16	1.586	535	625	1.17	8.5	14.5	22.5		
16	1.587	535	620	1.16	8.5	14.5	22.5		
16	1.590	530	615	1.16	8.5	14.5	23.0		
16	1.581	550	640	1.16	9.5	15.5	21.5		
16	1.582	550	645	1.17	10.0	16.0	21.5		
16	1.584	540	635	1.18	9.0	15.0	22.0		
16	1.579	550	645	1.17	10.0	16.0	21.5		
16	1.583	540	635	1.18	9.0	15.0	22.0		
16	1.579	550	645	1.17	10.0	16.0	21.5		
16	1.584	550	645	1.17	10.0	16.0	21.5		
16	1.580	550	650	1.18	10.0	16.0	21.5		
16	1.591	545	645	1.18	10.0	16.0	22.0		
16	1.588	555	645	1.16	10.0	16.0	21.0		
16	1.591	550	640	1.16	9.5	15.5	21.5		
16	1.592	550	655	1.19	10.5	16.5	21.5		
16	1.584	550	645	1.17	10.0	16.0	21.5		
16	1.587	555	645	1.16	10.0	16.0	21.0		
16	1.584	545	645	1.18	10.0	16.0	22.0		
16	1.586	550	650	1.18	10.0	16.0	21.5		
16	1.582	545	645	1.18	10.0	16.0	22.0		
16	1.583	545	640	1.17	9.5	15.5	22.0		
16	1.584	545	635	1.17	9.0	15.0	22.0		
16	1.582	545	640	1.17	9.5	15.5	22.0		
16	1.586	545	635	1.17	9.0	15.0	22.0		
16	1.587	545	635	1.17	9.0	15.0	22.0		
16	1.583	550	650	1.18	10.0	16.0	21.5		
16	1.584	555	660	1.19	10.5	16.5	21.0		
16	1.582	535	625	1.17	8.5	14.5	22.5		
16	1.583	535	625	1.17	8.5	14.5	22.5		
16	1.584	545	650	1.19	10.0	16.0	22.0		
16	1.583	545	645	1.18	10.0	16.0	22.0		
16	1.587	535	625	1.17	8.5	14.5	22.5		
16	1.583	545	640	1.17	9.5	15.5	22.0		
16	1.582	540	630	1.17	9.0	15.0	22.5		
16	1.584	535	625	1.17	8.5	14.5	22.5		
16	1.587	535	620	1.16	8.5	14.5	22.5		
16	1.577	530	620	1.17	8.5	14.5	23.0		
16	1.580	550	640	1.16	9.5	15.5	21.5		
16	1.575	545	635	1.17	9.0	15.0	22.0		
16	1.584	540	630	1.17	9.0	15.0	22.5		
16	1.576	545	630	1.16	9.0	15.0	22.0		
16	1.584	540	625	1.16	8.5	14.5	22.5		
16	1.577	545	635	1.17	9.0	15.0	22.0		
16	1.586	545	630	1.16	9.0	15.0	22.0		
16	1.573	550	640	1.16	9.5	15.5	21.5		
16	1.584	545	630	1.16	9.0	15.0	22.0		
16	1.577	550	645	1.17	10.0	16.0	21.5		
16	1.589	545	635	1.17	9.0	15.0	22.0		
16	1.579	545	635	1.17	9.0	15.0	22.0		
16	1.584	550	640	1.16	9.5	15.0	21.5		
16	1.578	550	640	1.16	9.5	15.5	21.5		
16	1.583	545	630	1.16	9.0	15.0	22.0		

16	1.578	545	635	1.17	9.0	15.0	22.0	1.35	0.98
16	1.586	545	630	1.16	9.0	15.0	22.0		
16	1.579	540	630	1.17	9.0	15.0	22.5		
16	1.584	545	635	1.17	9.0	15.0	22.0		
16	1.576	545	630	1.16	9.0	15.0	22.0		
16	1.584	545	630	1.16	9.0	15.0	22.0		
16	1.576	545	630	1.16	9.0	15.0	22.0		
16	1.581	545	635	1.17	9.0	15.0	22.0		
16	1.579	550	645	1.17	10.0	16.0	21.5		
16	1.580	535	625	1.17	8.5	14.5	22.5		
16	1.581	535	620	1.16	8.5	14.5	22.5		
16	1.584	545	635	1.17	9.0	15.0	22.0		
16	1.576	545	630	1.16	9.0	15.0	22.0		
16	1.582	535	620	1.16	8.5	14.5	22.5		
16	1.577	545	635	1.17	9.0	15.0	22.0		
16	1.583	535	620	1.16	8.5	14.5	22.5		
16	1.578	545	635	1.17	9.0	15.0	22.0		
16	1.584	545	630	1.16	9.0	15.0	22.0		
16	1.579	550	640	1.16	9.5	15.5	21.5		
16	1.585	540	630	1.17	9.0	15.0	22.5		
16	1.580	535	620	1.16	8.5	14.5	22.5		
16	1.587	535	620	1.16	8.5	14.5	22.5		
16	1.581	535	625	1.17	8.5	14.5	22.5		
16	1.588	545	635	1.17	9.0	15.0	22.0		
16	1.582	545	630	1.16	9.0	15.0	22.0		
16	1.589	540	630	1.17	9.0	15.0	22.5		
16	1.582	545	635	1.17	9.0	15.0	22.0		
16	1.585	550	645	1.17	10.0	16.0	21.5		
16	1.578	545	635	1.17	9.0	15.0	22.0		
16	1.584	560	640	1.14	10.0	14.0	21.0		
16	1.590	555	635	1.14	8.0	15.0	20.5		
16	1.580	550	630	1.15	9.5	14.0	21.0		
16	1.565	550	640	1.16	10.0	15.0	21.0		
16	1.575	550	635	1.15	8.0	14.0	20.5		
16	1.570	545	630	1.16	9.5	15.0	22.5		
16	1.579	560	650	1.16	8.0	14.0	20.5		
16	1.570	560	635	1.13	10.0	16.5	20.5		
16	1.580	545	640	1.17	8.0	15.5	22.5		
16	1.570	555	625	1.13	9.5	15.5	20.5		
16	1.582	540	625	1.16	8.0	14.0	21.0		
16	1.572	545	620	1.14	9.5	15.0	20.0		
16	1.582	535	620	1.16	8.0	14.5	20.5		
16	1.577	540	630	1.17	9.5	15.0	21.0		
16	1.584	545	640	1.17	8.0	14.0	21.5		
16	1.573	540	630	1.17	10.0	15.5	21.5		
16	1.584	540	635	1.18	8.0	14.0	20.0		
16	1.573	550	640	1.16	10.0	14.5	21.0		
16	1.582	550	630	1.15	10.0	15.0	20.5		
16	1.574	550	640	1.16	8.0	14.0	21.0		
16	1.576	550	635	1.15	9.5	15.5	20.5		
16	1.582	550	640	1.16	8.0	14.0	20.5		
16	1.574	535	620	1.16	9.5	15.0	20.5		
16	1.582	545	630	1.16	8.5	14.0	22.5		
16	1.577	555	640	1.15	8.0	15.0	20.5		
16	1.564	540	630	1.17	9.5	14.0	20.5		
16	1.573	560	635	1.13	8.0	15.5	22.5		
16	1.582	555	635	1.14	9.5	14.0	20.5		
16	1.574	555	635	1.14	8.0	15.5	21.5		
16	1.576	555	625	1.13	10.0	14.0	22.0		
16	1.580	540	635	1.18	8.0	15.0	20.5		
16	1.574	530	625	1.18	9.5	14.0	20.5		
16	1.582	525	610	1.16	8.0	15.5	20.5		
16	1.577	540	625	1.16	9.5	16.0	22.5		
16	1.583	550	640	1.16	8.0	16.0	22.5		
16	1.576	550	650	1.18	10.0	14.0	20.5		
16	1.584	545	640	1.17	8.0	15.5	22.5		
16	1.588	550	635	1.15	9.0	14.5	20.5		
16	1.573	550	630	1.15	10.0	15.0	21.5		
16	1.582	555	635	1.14	8.0	14.0	21.0		
16	1.584	545	635	1.17	9.5	15.0	20.0		
16	1.576	560	635	1.13	9.5	14.0	22.0		
16	1.584	550	640	1.16	9.5	15.5	20.5		
16	1.573	560	640	1.14	10.0	14.0	21.0		
16	1.584	555	645	1.16	8.0	15.5	20.5		
16	1.577	550	630	1.15	9.5	14.0	20.5		
16	1.583	555	645	1.16	8.0	15.5	20.5		

16	1.582	540	620	1.15	9.5	14.0	22.5	1.20	0.95
16	1.576	535	625	1.17	8.0	16.0	20.5		
16	1.582	555	625	1.13	9.0	14.0	20.0		
16	1.584	550	620	1.13	10.0	15.5	20.5		
16	1.573	555	640	1.15	8.0	14.0	21.0		
16	1.586	540	635	1.18	9.5	15.5	21.5		
16	1.582	550	640	1.16	8.0	14.0	21.5		
16	1.584	550	645	1.17	9.5	15.0	20.0		
16	1.582	550	640	1.16	8.0	14.0	20.5		
16	1.588	545	640	1.17	9.5	14.5	21.5		
16	1.590	545	635	1.17	8.0	15.5	21.5		
16	1.586	550	645	1.17	9.5	14.5	20.5		
16	1.592	560	640	1.14	8.0	15.0	21.5		
16	1.584	545	640	1.17	10.0	14.0	21.0		
16	1.593	550	640	1.16	8.0	15.5	22.0		
16	1.570	560	640	1.14	9.5	14.0	22.0		
16	1.568	550	650	1.18	8.0	16.0	21.5		
16	1.572	560	635	1.13	9.5	15.5	20.5		
16	1.569	540	620	1.15	8.0	15.0	20.5		
16	1.591	550	630	1.15	9.5	15.5	20.0		
16	1.596	545	640	1.17	8.0	14.0	21.0		
16	1.594	560	650	1.16	8.0	16.0	22.5		
16	1.595	550	635	1.15	9.5	15.0	21.0		
16	1.583	560	685	1.22	9.0	14.5	21.5		
16	1.583	560	680	1.21	8.5	14.0	21.0		
16	1.575	545	665	1.22	10.0	16.5	22.5		
16	1.581	555	670	1.21	9.5	15.5	22.0		
16	1.579	560	665	1.19	8.5	14.0	20.5		
16	1.584	565	670	1.19	8.0	14.0	20.0		
16	1.580	560	665	1.19	8.5	14.5	21.0		
16	1.575	550	655	1.19	10.0	16.5	22.5		
16	1.585	560	645	1.15	9.0	14.5	21.5		
16	1.580	540	640	1.19	9.5	15.0	22.0		
16	1.588	560	670	1.20	8.5	14.0	20.5		
16	1.584	550	650	1.18	9.5	16.0	22.0		
16	1.562	560	660	1.18	8.5	14.5	21.0		
16	1.552	565	660	1.17	9.0	14.0	21.0		
16	1.573	560	650	1.16	8.5	14.0	20.5		
16	1.570	560	655	1.17	8.0	14.0	20.0		
16	1.589	565	655	1.16	8.0	14.0	20.0		
16	1.585	555	640	1.15	9.5	15.5	22.0		
16	1.603	550	645	1.17	9.0	14.5	21.5		
16	1.590	560	660	1.18	8.5	14.0	20.5		
16	1.586	565	655	1.16	8.0	14.0	20.0		
16	1.582	545	655	1.20	10.0	16.0	22.5		
16	1.588	550	655	1.19	9.5	15.0	22.0		
16	1.584	555	645	1.16	8.5	14.0	21.0		
16	1.592	555	645	1.16	9.0	14.5	21.5		
16	1.586	565	655	1.16	8.5	14.0	20.5		
16	1.580	565	655	1.16	8.5	14.5	20.5		
16	1.577	560	660	1.18	8.0	14.0	20.0		
16	1.583	545	645	1.18	10.5	17.0	23.0		
16	1.579	555	655	1.18	9.0	14.5	21.5		
16	1.588	560	650	1.16	8.5	14.0	21.0		
16	1.584	565	655	1.16	8.5	14.0	20.5		
16	1.591	560	650	1.16	9.5	15.5	22.0		
16	1.587	565	655	1.16	8.5	14.0	21.0		
16	1.594	555	650	1.17	9.5	15.5	22.0		
16	1.588	560	660	1.18	8.0	14.0	20.5		
16	1.595	550	650	1.18	10.0	16.0	22.5		
16	1.589	560	655	1.17	9.0	14.5	21.5		
16	1.577	560	655	1.17	8.5	14.0	21.0		
16	1.571	555	650	1.17	9.0	14.5	21.5		
16	1.578	555	645	1.16	9.5	14.5	21.5		
16	1.573	565	655	1.16	8.5	14.0	20.5		
16	1.580	555	670	1.21	10.0	16.0	22.5		
16	1.575	560	675	1.21	9.5	15.5	22.0		
16	1.589	540	630	1.17	9.0	15.0	22.0		
16	1.579	550	655	1.19	8.5	14.0	21.0		
16	1.590	545	650	1.19	10.0	16.0	22.5		
16	1.587	560	665	1.19	8.5	14.0	21.0		
16	1.593	555	655	1.18	9.0	14.5	21.5		
16	1.587	560	665	1.19	8.5	14.0	21.0		
16	1.570	555	670	1.21	9.0	14.5	21.5		
16	1.568	565	665	1.18	8.5	14.0	20.5		
16	1.573	545	635	1.17	10.0	16.0	22.5		

16	1.568	540	645	1.19	10.5	16.5	23.0	1.30	0.98
16	1.575	550	645	1.17	10.0	17.0	23.0		
16	1.572	545	655	1.20	8.5	14.0	21.0		
16	1.575	535	635	1.19	9.5	15.5	22.0		
16	1.570	545	655	1.20	9.0	14.5	21.5		
16	1.577	550	660	1.20	8.5	14.0	21.0		
16	1.571	550	660	1.20	9.0	14.5	21.5		
16	1.578	555	660	1.19	8.0	14.0	20.5		
16	1.574	560	665	1.19	8.5	14.0	21.0		
16	1.579	550	655	1.19	9.5	15.0	22.0		
16	1.575	560	655	1.17	9.0	14.5	21.5		
16	1.582	545	645	1.18	10.0	16.5	22.5		
16	1.578	555	655	1.18	8.5	14.0	21.0		
16	1.585	555	660	1.19	9.0	15.0	21.5		
16	1.579	540	650	1.20	10.5	16.5	22.5		
16	1.588	540	650	1.20	9.5	15.5	22.0		
16	1.581	550	655	1.19	9.0	14.5	21.5		
16	1.590	545	655	1.20	10.5	17.0	23.0		
16	1.582	540	645	1.19	10.0	16.5	22.5		
16	1.591	545	640	1.17	10.0	16.0	22.5		
16	1.586	560	650	1.16	8.5	14.0	21.0		
16	1.586	560	650	1.16	9.0	14.5	21.5		
16	1.582	565	655	1.16	8.5	14.0	20.5		
16	1.593	545	645	1.18	10.0	15.5	22.5		
16	1.586	550	650	1.18	9.5	15.0	22.0		
16	1.571	545	640	1.17	9.5	15.5	21.5		
16	1.572	550	645	1.17	10.0	16.0	21.5		
16	1.576	540	635	1.18	9.0	15.0	22.0		
16	1.578	535	630	1.18	9.0	15.0	22.5		
16	1.584	540	635	1.18	9.0	15.0	22.0		
16	1.587	545	640	1.17	9.5	15.5	21.5		
16	1.586	540	625	1.16	8.5	14.5	22.0		
16	1.587	535	620	1.16	8.5	14.5	22.0		
16	1.584	540	630	1.17	9.0	15.0	22.0		
16	1.586	535	620	1.16	8.5	14.5	22.0		
16	1.587	540	630	1.17	9.0	15.0	22.0		
16	1.588	535	620	1.16	8.5	14.5	22.0		
16	1.589	550	640	1.16	9.5	15.5	21.5		
16	1.587	545	640	1.17	9.5	15.5	21.5		
16	1.584	540	635	1.18	9.0	15.0	22.0		
16	1.586	540	630	1.17	9.0	15.0	22.0		
16	1.582	535	625	1.17	8.5	14.5	22.0		
16	1.587	530	615	1.16	8.5	14.5	22.5		
16	1.589	545	635	1.17	9.0	15.0	21.5		
16	1.588	545	635	1.17	9.0	15.0	21.5		
16	1.587	540	630	1.17	9.0	15.0	22.0		
16	1.589	540	630	1.17	9.0	15.0	22.0		
16	1.582	535	620	1.16	8.5	14.5	22.5		
16	1.587	540	630	1.17	9.0	15.0	22.0		
16	1.586	545	640	1.17	9.5	15.5	21.5		
16	1.587	540	630	1.17	9.0	15.0	22.0		
16	1.589	545	635	1.17	9.0	15.0	21.5		
16	1.587	540	630	1.17	9.0	15.0	22.0		
16	1.589	545	640	1.17	9.5	15.5	21.5		
16	1.590	535	625	1.17	8.5	14.5	22.0		
16	1.587	540	630	1.17	9.0	15.0	22.0		
16	1.593	535	620	1.16	8.5	14.5	22.0		
16	1.584	540	630	1.17	9.0	15.0	22.0		
16	1.597	540	630	1.17	9.0	15.0	22.0		
16	1.586	540	635	1.18	9.0	15.0	22.0		
16	1.589	535	620	1.16	8.5	14.5	22.0		
16	1.589	535	620	1.16	8.5	14.5	22.0		
16	1.591	535	620	1.16	8.5	14.5	22.5		
16	1.592	540	630	1.17	9.0	15.0	22.0		
16	1.594	540	625	1.16	8.5	14.5	22.0		
16	1.589	535	625	1.17	8.5	14.5	22.5		
16	1.587	540	630	1.17	9.0	15.0	22.0		