

FAST REINFORCEMENT, FOR A SAFER CONSTRUCTION

BSRM WWR (WELDED WIRE REINFORCEMENT)



BSRM WWR (WELDED WIRE REINFORCEMENT)

BSRM Fastbuild is the country's first and only customized steel solution service center. Fastbuild brings Welded Wire Reinforcement (WWR) for the first time in Bangladesh with state-of-the-art European technology, to eliminate construction waste and save time in the construction of floor, roof concrete slabs and road pavements.

BENEFITS



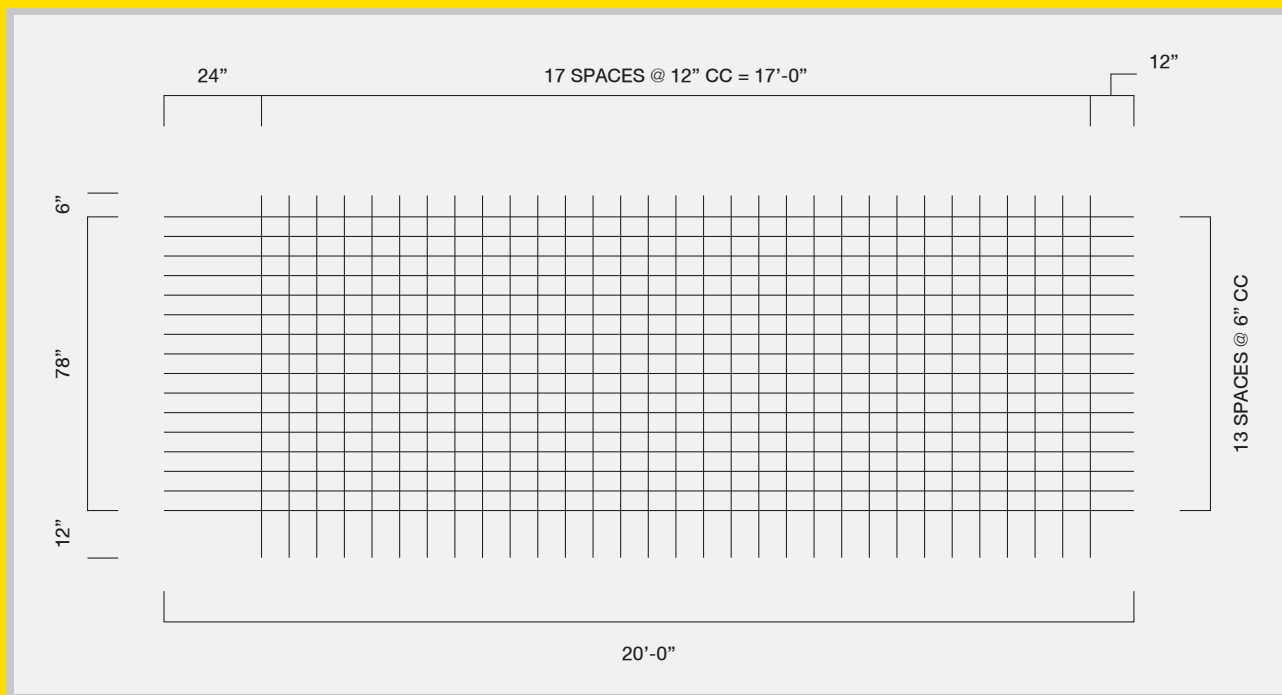
Can be customized to any spacing from 25mm to 200mm



Available with ribbed wire and deformed bars
4.5mm, 6mm, 8mm, 10mm, and 12mm








No more wasteful and time-consuming
G.I. wire binding or any other type of slab reinforcement



TECHNICAL CHARACTERISTICS

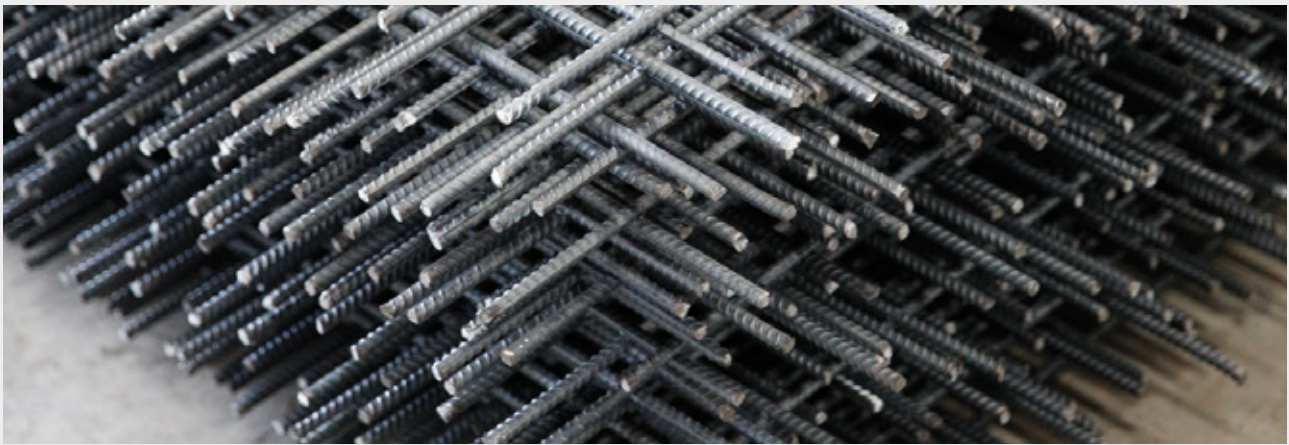
- WWR sheets are manufactured out of cold-rolled ribbed wires or hot rolled bars with yield strength of 500 MPa.
- The longitudinal and transverse wires and bars are electric-resistant welded by applying pressure and passing electric current at the intersection.
- Welded Wire Reinforcement (WWR) develops guaranteed shear strength of 240 MPa (35000psi) at the intersection. This provides a huge anchoring effect in the slab concrete.

REFERENCE CODES AND STANDARDS

	For Buildings ACI 318-19
	BNBC 2020
	For Road Bridges & Flyovers AASHTO LRFD Code 2017
	ASTM 1064, ASTM 185, ASTM 496
	ISO 6935-3

CONSTRUCTION ADVANTAGES AND ECONOMY IN USING WWR

- The bonding behaviour of WWR is significantly enhanced than that of ordinary deformed bars.
- As against the peripheral surface area which is responsible for bonding to concrete in the case of individual bars, the rigid mechanical interconnections by means of welds to cross wires are primarily responsible for stress transfer from concrete to steel and vice-versa in the case of WWR.
- This behaviour of positive mechanical anchorage is acknowledged in the specification of much lower lap splice lengths for WWR. This aspect can result in savings of steel vis-à-vis HYSD bars by making easy the option to use a combination of fabrics/ steel areas provided to achieve curtailment of reinforcement with easy and short splices
- The behaviour of strong mechanical anchorage of the welds at each of the intersections imparts an immense deal of homogeneity to the R.C.C section as a whole. The two-dimensional uniform stress distribution of the fabric with the concrete achieves better plate behaviour in the slab.



- WWR usage affords the possibility of using thinner wires at closer spacing. This serves most effectively in countering the non-load phenomena or strain-induced stresses due to shrinkage and temperature changes.
- The close spacing of thinner wires and the two-way behaviour of WWR minimizes the crack widths and preserves the structural integrity of the slab.
- WWR ensures up to 50% savings in construction labour and time in slab reinforcement work.

APPLICATIONS

- Residential floor and roof slabs, easy and convenient for fast erection. No messy, unreliable and time-consuming G.I. wire tying.
- Slabs on ground where thin wire reinforcement is needed primarily for crack control, due to temperature and shrinkage.
- Heavy industrial floors with vehicular loading.
- Bridge and Flyover Decks.



**RANGPUR
OFFICE**

Olipur Market,
Goneshpur, R K Road, Rangpur
Tel: +88 01714094579

**BOGURA
OFFICE**

Tin Matha Railgate,
Puran Bogura, Bogura
Tel: +88 05160792, +88 05164169,
+88 01714084368

**RAJSHAHI
OFFICE**

Shefali Tower
(5th Floor)
Bindur Moor, Rajshahi
Tel: +88 01730-703013

**SYLHET
OFFICE**

102, Jhormar Par,
Kumarpara, Sylhet
Tel: +88 01730007898

Bagdad Tanzia Tower, (3rd floor),
Tangail Road, Chandona Chowrasta, Gazipur
Tel: +88 01714105052

Jamtali More, Churkhai,
Sader, Mymensingh
Tel: +88 0177764600

**MYMENSINGH
OFFICE**

**GAZIPUR
OFFICE**

**NARSINGDI
OFFICE**

492, Ripon Tower
(1st Floor), Titas Gas Office Road,
Chinishpur, Narsingdi
Tel: +88 01713108206

Motiar Bhabon,
in front of Police line
School, Dadapur Road,
Mojompur, Kushtia
Tel: +88 01714080514

**KUSHTIA
OFFICE**

**TANGAIL
OFFICE**

**DHAKA
CORPORATE
OFFICE**

**UTTARA
OFFICE**

Atlanta Trade Center, Road- 1/A, H- 1,
6th floor, Sector- 4, Uttara, Dhaka-1230
Tel: +88 0258957891, +88 0248958029

Basak Tower (1st Floor)
Boro Kalibari Road, Sader, Tangail
Tel: +88 01730787096

**FARIDPUR
OFFICE**

Nasir Uddin Tower, 4th Floor,
Bir Uttam Samsul Alam Road, 104/1
Kakrail, Dhaka-1000, Bangladesh
Tel: +88 028300591-95

**NARAYANGANJ
OFFICE**

Jungal, Barpara,
Bandar, Narayanganj
Tel: +88 01755338356

**CUMILLA
OFFICE**

Hafez Building 2nd floor,
(Right side) Mujib Sharak, Niltuli, Faridpur
Tel: +88 01713161018

**KHULNA
OFFICE**

Nowshin Tower (3rd floor),
11 KDA Avenue, Shibbari, Khulna
Tel: +88 041733753, +88 01708494898

**BARISHAL
OFFICE**

Shahid Muktijoddha ADC Kazi Azizul Islam Sarak,
(30 go-down road), South Alekanda, Barishal
Tel: +88 0431-2177518, +88 043162048, +88 01755545910

Chandrima Super Market, Airport Road
(Near the EPZ Main Gate-01), Cumilla
Tel: +88 08171988, +88 01714080657

**MIRSHARAI
OFFICE**

Sonapahar, Zorargonj,
Mirsharai, Chittagong
Tel: +88 01713248755

**CORPORATE
OFFICE**

Ali Mansion,
1207/1099 Sadarghat Rd,
Chattogram 4100, Bangladesh
Tel: +88 0312854901-10

**COX'S BAZAR
OFFICE**

S.K Tower, 2nd Floor,
khuruskul Road, Tarabaniar Chara, Cox's Bazar
Tel: +88 01730014986



Visit us at
bsrn.com or scan the QR code